

VENDIM
Nr. 271, datë 10.4.2026

**PËR SHPALLJEN E DISA ZONAVE ME PËRPARËSI ZHVILLIMIN E
EKONOMISË MALORE NË BASHKINË POLIÇAN**

Në mbështetje të nenit 100 të Kushtetutës dhe të pikës 1, të nenit 4, të ligjit nr. 20/2025, “Për paketën e maleve”, me propozimin e ministrit të Shtetit për Pushtetin Vendor, Këshilli i Ministrave

VENDOSI:

1. Shpalljen “Zonë me përparësi zhvillimin e ekonomisë malore” të disa zonave në territorin e Bashkisë Poliçan, si më poshtë vijon:

a) Zona nr. 1, fshatrat Mbrakull, Peshtan, Fushë Peshtan, Bregas, Vërtop, Lybeshë, Drenovë, Kapinovë, Tomor i Madh, Tomor i Vogël, pjesë e Njesisë Administrative Vërtop, Bashkia Poliçan, qarku Berat, me sipërfaqe 5 205 (pesë mijë e dyqind e pesë) ha, sipas hartës në sistemin KRGJSH;

b) Zona nr. 2, fshatrat Zhitom i Vogël, Zhitom i Madh dhe Tërpan, pjesë e Njesisë Administrative Tërpan, Bashkia Poliçan, qarku Berat, me sipërfaqe 2 693 (dy mijë e gjashtëqind e nëntëdhjetë e tre) ha, sipas hartës në sistemin KRGJSH;

c) Zona nr. 3, fshatrat Teman dhe Tozhar, pjesë e Njesisë Administrative Tërpan, Bashkia Poliçan, qarku Berat, me sipërfaqe 1 210 (një mijë e dyqind e dhjetë) ha, sipas hartës në sistemin KRGJSH;

ç) Zona nr. 4, fshatrat Çorogjaf dhe Rehovë, pjesë e Njesisë Administrative Tërpan, Bashkia Poliçan, qarku Berat, me sipërfaqe 748 (shtatëqind e dyzet e tetë) ha, sipas hartës në sistemin KRGJSH;

d) Zona nr. 5, fshatrat Plashnik i Madh dhe Lugas, pjesë e Njesisë Administrative Tërpan, Bashkia Poliçan, qarku Berat, me sipërfaqe 1 691 (një mijë e gjashtëqind e nëntëdhjetë e një) ha, sipas hartës në sistemin KRGJSH.

2. Shtrirja, kufijtë dhe pikat e hyrjes e të daljes së këtyre zonave përcaktohen në hartën treguese, sipas sistemit KRGJSH, që i bashkëlidhet këtij vendimi.

3. Llojet e aktiviteteve, që do të zhvillohen në këtë zonë, janë:

a) të zhvillimit ekonomik;

b) të zhvillimit industrial;

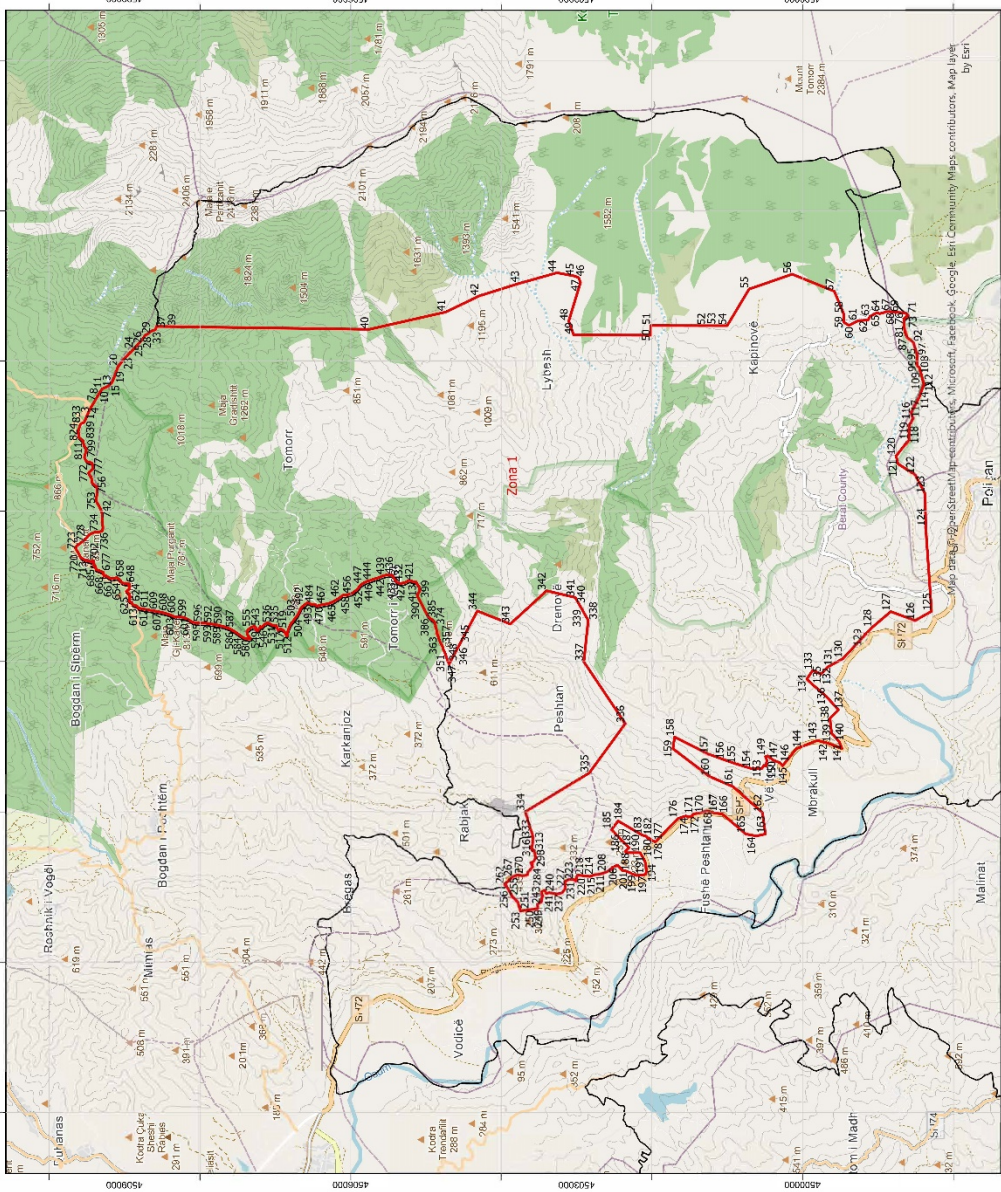
c) të zhvillimit turistik.

4. Ngarkohen Ministria e Ekonomisë dhe Inovacionit, Agjencia Shtetërore e Kadastrës dhe Bashkia Poliçan për zbatimin e këtij vendimi.

Ky vendim hyn në fuqi pas botimit në Fletoren Zyrtare.

KRYEMINISTËR
Edi Rama

ZONA ME PËRPARËSI ZHVILLIMIN E EKONOMISË MALORE
ZONA 1, NJËSIA ADMINISTRATIVE VERTOP, BASHKIA POLIÇAN, QARKU BERAT



Njësia Administrative	Zona	Sipërfaqja (Ha)
Vertop	Zona 1	5205
Terpan	Zona 2	2693
Terpan	Zona 3	1210
Terpan	Zona 4	748
Terpan	Zona 5	1691



1:50,000



- Legjendë**
- Zona me përparësi zhvillim e ekonomisë malore
 - Bashkia Poličan
 - Ndërrësia
 - Izopse
 - Kategorië e Riljeft Rugor**
 - B. Rruge Interurbane Kyesore
 - C. Rruge Interurbane Dytësore
 - D. Rruge Urbane Kyesore
 - E. Rruge Urbane Dytësore
 - F. Rruga Lokale

*Zona 1 përbëhet në lirin e Njësia Administrative Vertop, me sipërfaqe prej 5205 ha

**Sistemi Koordinativ: KRGS/SH (Kordinata Referuese Gjendëzike Shqiptare)/ EPSG 8870

Zona 1
Njësia Administrative Vertop

Nr.	Koordinata X	Koordinata Y	Nr.	Koordinata X	Koordinata Y
1	509212.77	4509521.1	421	507069.65	4505188.61
2	509247.93	4509508.05	422	507074.84	4505200.44
3	509298.61	4509485.66	423	507079.16	4505213.93
4	509342.25	4509466.27	424	507082.32	4505223.77
5	509396.92	4509437.48	425	507076.7	4505233.23
6	509453.35	4509401.43	426	507061.85	4505258.27
7	509509.17	4509370.13	427	507051.72	4505278.15
8	509551.23	4509345.35	428	507045.87	4505300.49
9	509569.8	4509334.41	429	507041.39	4505324.95
10	509611.55	4509308.83	430	507040.42	4505348.04
11	509625.39	4509298.63	431	507043.75	4505363.49
12	509634.8	4509283.89	432	507051.28	4505378.28
13	509642.87	4509263.53	433	507068.56	4505398.78
14	509654.69	4509234.53	434	507101.2	4505422.26
15	509690.72	4509185.6	435	507131.14	4505437.31
16	509708.42	4509168.3	436	507148.51	4505450.11
17	509741.52	4509152.57	437	507152.48	4505469.77
18	509828.75	4509117.85	438	507154.31	4505493.6
19	509879.41	4509100.27	439	507147.43	4505544.64
20	509926.47	4509083.95	440	507137.22	4505580.24
21	509971.71	4509046.65	441	507121.38	4505618.57
22	510015.44	4509019.13	442	507110.56	4505646.46
23	510060.08	4508973.42	443	507098.84	4505691.84
24	510161.04	4508880.42	444	507076.48	4505749.01
25	510231.8	4508815.96	445	507065.52	4505788.8
26	510289.2	4508764.01	446	507045.45	4505829.19
27	510325.61	4508739.49	447	507031.19	4505852.14
28	510340.01	4508729.57	448	507014.86	4505871.56
29	510349.64	4508719.88	449	507012.36	4505874.53
30	510356.02	4508701.18	450	507000.02	4505883.29
31	510363.7	4508690.63	451	506976.72	4505899.84
32	510386.1	4508667.35	452	506957.62	4505917.13
33	510400.43	4508638.66	453	506917.82	4505966.55
34	510406.18	4508625.84	454	506911.82	4505977.41
35	510411.17	4508605.73	455	506895.95	4506018.12
36	510421.44	4508589.32	456	506890.39	4506038.51
37	510437.46	4508584.46	457	506886.86	4506053.31
38	510460.01	4508580.58	458	506883.84	4506073.17
39	510458.07	4508439.63	459	506884.25	4506085.5
40	510421.09	4505753.43	460	506882.95	4506101.73
41	510651.78	4504735.77	461	506880.05	4506110.38
42	510864.44	4504294.79	462	506848.8	4506148.68
43	511035.11	4503753.49	463	506814.87	4506201.79
44	511174.08	4503262.89	464	506794.56	4506238.54

45	511129.89	4503027.09	465	506772.65	4506292.91
46	511107.84	4502974.22	466	506766.43	4506322.53
47	511044.85	4502949.94	467	506760.16	4506356.91
48	510530.03	4503106.85	468	506756.27	4506378.72
49	510345.5	4503040.37	469	506750.66	4506404.14
50	510343.37	4502011.68	470	506745.38	4506419.97
51	510471.59	4502014.17	471	506740.07	4506430.83
52	510470.43	4501281.19	472	506739.18	4506435.44
53	510470.33	4501214.88	473	506740.57	4506448.62
54	510469.99	4501002.25	474	506744.04	4506453.63
55	510956.58	4500710.13	475	506751.24	4506458.13
56	511154.85	4500137.72	476	506754.44	4506460.13
57	510927.41	4499577.15	477	506761.63	4506468.47
58	510626.76	4499453.29	478	506762.28	4506472.96
59	510517.76	4499453.29	479	506762.99	4506484.17
60	510472.22	4499383.5	480	506763.85	4506494.97
61	510532.14	4499268.97	481	506761.64	4506504.47
62	510547.78	4499127.35	482	506757.67	4506516.23
63	510594.7	4499101.98	483	506766.38	4506530.37
64	510643.32	4499008.98	484	506770.53	4506537.12
65	510629.37	4498975.58	485	506774.64	4506543.81
66	510645.01	4498913.86	486	506779.55	4506551.77
67	510656.43	4498896.1	487	506787.89	4506565.34
68	510656.43	4498854.68	488	506776.55	4506580.78
69	510645.34	4498717.59	489	506766.29	4506594.76
70	510638.69	4498635.35	490	506756.93	4506607.51
71	510621.98	4498614.48	491	506750.18	4506616.7
72	510612.69	4498601.74	492	506748.15	4506619.85
73	510602.47	4498605.99	493	506736.41	4506631.33
74	510591.97	4498617.92	494	506731.41	4506639.95
75	510578.06	4498633.72	495	506723.05	4506648.26
76	510565.01	4498648.7	496	506712.15	4506655.87
77	510543.99	4498653.32	497	506703.7	4506660.26
78	510522.03	4498653.46	498	506683.43	4506668.99
79	510503.73	4498651.97	499	506665.69	4506677.19
80	510479.24	4498649.98	500	506639.88	4506690.09
81	510475.12	4498649.65	501	506615.26	4506702.95
82	510461.87	4498648.57	502	506592.37	4506720.61
83	510408.72	4498641.66	503	506586.01	4506727.24
84	510397.18	4498637.79	504	506574.7	4506736.64
85	510377.99	4498635.29	505	506538.86	4506759.76
86	510332.64	4498620.07	506	506518.75	4506778.86
87	510308.26	4498609.29	507	506489.96	4506798.7
88	510295.99	4498595.11	508	506447.75	4506815.59
89	510288.56	4498583.82	509	506408.93	4506829.99
90	510268.47	4498552.22	510	506397.93	4506834.07
91	510268.27	4498552.04	511	506388.96	4506835.17

92	510247.95	4498534.06	512	506351.96	4506839.71
93	510206.4	4498517.34	513	506342.41	4506841.84
94	510149.72	4498501.57	514	506341.6	4506846.09
95	510110.82	4498489.54	515	506353.26	4506854.91
96	510105.88	4498488.6	516	506376.39	4506866.09
97	510068.99	4498481.46	517	506401.18	4506877.86
98	510043.22	4498480.89	518	506413.95	4506888.09
99	510020.08	4498483.04	519	506429.06	4506913.75
100	509994.99	4498485.38	520	506432.02	4506924.99
101	509985.71	4498485.28	521	506434.45	4506932.86
102	509967.83	4498485.07	522	506421.09	4506950.36
103	509960.04	4498479.94	523	506418.2	4506958.17
104	509959.51	4498478.96	524	506420.11	4506962.11
105	509937.09	4498478.7	525	506424.27	4506965.52
106	509929.31	4498473.57	526	506433.19	4506969.54
107	509925.19	4498465.96	527	506462.81	4506979.74
108	509913.71	4498451.85	528	506471.7	4506982.58
109	509862.02	4498440.06	529	506480.93	4506983.81
110	509809.01	4498421.95	530	506480.84	4506985.51
111	509751.74	4498407.99	531	506480.57	4506991.09
112	509710.57	4498395.62	532	506479.3	4507010.85
113	509693.74	4498389.79	533	506481.27	4507027.79
114	509607.06	4498421.16	534	506483.13	4507036.63
115	509515.42	4498454.33	535	506499.58	4507067.77
116	509309.12	4498561.29	536	506504.49	4507079.03
117	509233.45	4498533.6	537	506517.96	4507102.16
118	509145.94	4498585.38	538	506507.95	4507119.69
119	508948.09	4498588.77	539	506490.89	4507146.5
120	508736.08	4498755.12	540	506475.28	4507160.21
121	508632.72	4498732.5	541	506458.03	4507174.3
122	508488.56	4498509.29	542	506454.96	4507178.07
123	508230.69	4498374.43	543	506466.19	4507198.29
124	507790.6	4498367.24	544	506448.67	4507206.93
125	506668.79	4498289.57	545	506441.38	4507210.52
126	506546.44	4498507.65	546	506426.02	4507221.45
127	506664.63	4498826.73	547	506424.84	4507228.55
128	506451.74	4499076.62	548	506408.07	4507236.49
129	506321.03	4499200.76	549	506418.99	4507251.85
130	506038.85	4499462.39	550	506430.6	4507262.04
131	505928.49	4499663.87	551	506438.9	4507261.29
132	505832.91	4499752.31	552	506444.59	4507253.71
133	505882.13	4499865.96	553	506447.34	4507256.12
134	505765.09	4499942.54	554	506469.42	4507275.52
135	505693.6	4499866.4	555	506453.77	4507321.78
136	505539	4499687.2	556	506445.07	4507332.79
137	505356.24	4499522.61	557	506437.68	4507340.33
138	505242.86	4499635.92	558	506436.18	4507342.12

139	505047.63	4499614.24	559	506431.89	4507347.25
140	504930.3	4499509.8	560	506427.06	4507353.54
141	504840.1	4499476.6	561	506422.22	4507360.16
142	504914.83	4499666.43	562	506417.07	4507366.45
143	504949.49	4499803.38	563	506410.36	4507370.18
144	504840.1	4500081.4	564	506400.79	4507374.2
145	504612.44	4500265.38	565	506394.12	4507374.44
146	504653.69	4500301.69	566	506385.55	4507373.71
147	504684.95	4500385.72	567	506378.02	4507373.06
148	504744.46	4500465.04	568	506372.07	4507366.98
149	504734.02	4500492.39	569	506370.05	4507367.83
150	504686.71	4500474.33	570	506363.38	4507368.07
151	504610.87	4500484.72	571	506354.82	4507367.34
152	504617.55	4500514.13	572	506345.97	4507363.75
153	504576.58	4500541.45	573	506338.1	4507357.31
154	504576.58	4500684.56	574	506330.26	4507349.28
155	504638.85	4500886.79	575	506324.93	4507343.5
156	504691.77	4501039.23	576	506318.31	4507338.67
157	504768.05	4501247.68	577	506313.92	4507334.49
158	504995.78	4501699.3	578	506307.96	4507327.75
159	504838.97	4501720.56	579	506305.46	4507326.55
160	504467.29	4501229.38	580	506303.62	4507331.61
161	504335.3	4500924.2	581	506299.79	4507360.28
162	503987.51	4500532.23	582	506301.02	4507367.05
163	503704.25	4500493.59	583	506307.04	4507400.27
164	503677.8	4500615.82	584	506328.31	4507439.03
165	503705.46	4500755.42	585	506355.89	4507477.16
166	503969.18	4501065.55	586	506402.05	4507543.51
167	503986.65	4501184.09	587	506439.13	4507607.66
168	504009.79	4501260.12	588	506464.19	4507682.87
169	503976.27	4501415.51	589	506473.61	4507716.59
170	503974.28	4501433.13	590	506484.34	4507758.03
171	503967.35	4501451.89	591	506490.87	4507799.42
172	503955.79	4501464.04	592	506498.14	4507837.32
173	503943.25	4501462.21	593	506502.58	4507877.98
174	503933.64	4501510.22	594	506510.43	4507927.09
175	503944.51	4501550.96	595	506511.94	4507978.93
176	503910.15	4501654.8	596	506513.93	4508049.68
177	503606.85	4501947.61	597	506525.22	4508103.73
178	503601.72	4501956.22	598	506551.38	4508143.24
179	503615.43	4501994.57	599	506580.83	4508201.7
180	503652.44	4502043.83	600	506590.93	4508236.83
181	503642.69	4502050.59	601	506594.06	4508269.78
182	503674.82	4502076.5	602	506592.91	4508308.98
183	503690.68	4502130.63	603	506595.4	4508336.32
184	503878.41	4502449.86	604	506600.67	4508348.07
185	503761.97	4502537.5	605	506615.89	4508382.07

186	503639	4502419.22	606	506638.94	4508448.86
187	503521.62	4502304.16	607	506655.04	4508510.67
188	503471.22	4502357.15	608	506663.69	4508550.68
189	503455.33	4502342.03	609	506680.18	4508639.8
190	503455.33	4502157.03	610	506682.71	4508663.64
191	503351.34	4502098.06	611	506703.13	4508777.32
192	503326.19	4502089.42	612	506711.07	4508818.02
193	503299.37	4502082.95	613	506717.99	4508825.11
194	503233.58	4502074.88	614	506728.59	4508829.15
195	503212.8	4502074.88	615	506737.45	4508837.93
196	503169.98	4502081.47	616	506743.74	4508851.45
197	503160.17	4502117.08	617	506749.16	4508867.48
198	503151.77	4502202.9	618	506750.72	4508878.14
199	503172.87	4502261.38	619	506753.16	4508884.61
200	503186.08	4502284.24	620	506759.5	4508893.65
201	503215.15	4502355.9	621	506770.6	4508903.58
202	503217.07	4502389.52	622	506778.35	4508907.77
203	503287.08	4502455.66	623	506781.17	4508909.3
204	503284.71	4502478.21	624	506791.14	4508916.5
205	503280.22	4502477.96	625	506801.63	4508933.34
206	503269.53	4502511.84	626	506810.82	4508943.11
207	503216.5	4502574.64	627	506815.82	4508941.77
208	503198.92	4502603.46	628	506858.83	4508928.81
209	503190.77	4502626.21	629	506870.85	4508930.63
210	503182.92	4502644.17	630	506877.99	4508938.67
211	503176.48	4502678.33	631	506889.56	4508935.18
212	503171.06	4502702.59	632	506896.58	4508936.24
213	503166.89	4502724.12	633	506896.87	4508936.29
214	503157.28	4502777.88	634	506901.59	4508937
215	503146	4502808.88	635	506917.1	4508954.46
216	503139.8	4502825.94	636	506918.18	4508955.68
217	503145.98	4502874.88	637	506922.23	4508961.37
218	503149.66	4502903.99	638	506927.83	4508969.23
219	503156.67	4502988.66	639	506935.9	4508975.35
220	503124.42	4503006.24	640	506938.43	4508973.14
221	503078.99	4502993.56	641	506945.85	4508961.46
222	503076.91	4503009.13	642	506957.83	4508942.54
223	503096.96	4503036.07	643	506976.11	4508936.31
224	503099.44	4503074.7	644	506995.17	4508935.41
225	503098	4503096.26	645	507003.61	4508943.78
226	503082.4	4503144.45	646	507006.84	4508942.68
227	503082.4	4503146.4	647	507025.9	4508941.78
228	503081.59	4503146.96	648	507036.43	4508941.28
229	503080.99	4503148.82	649	507038.04	4508958.44
230	503030.85	4503152.94	650	507040.78	4508987.88
231	503000.23	4503151.4	651	507042.76	4509010.59
232	502980.47	4503153.16	652	507048.41	4509031.11

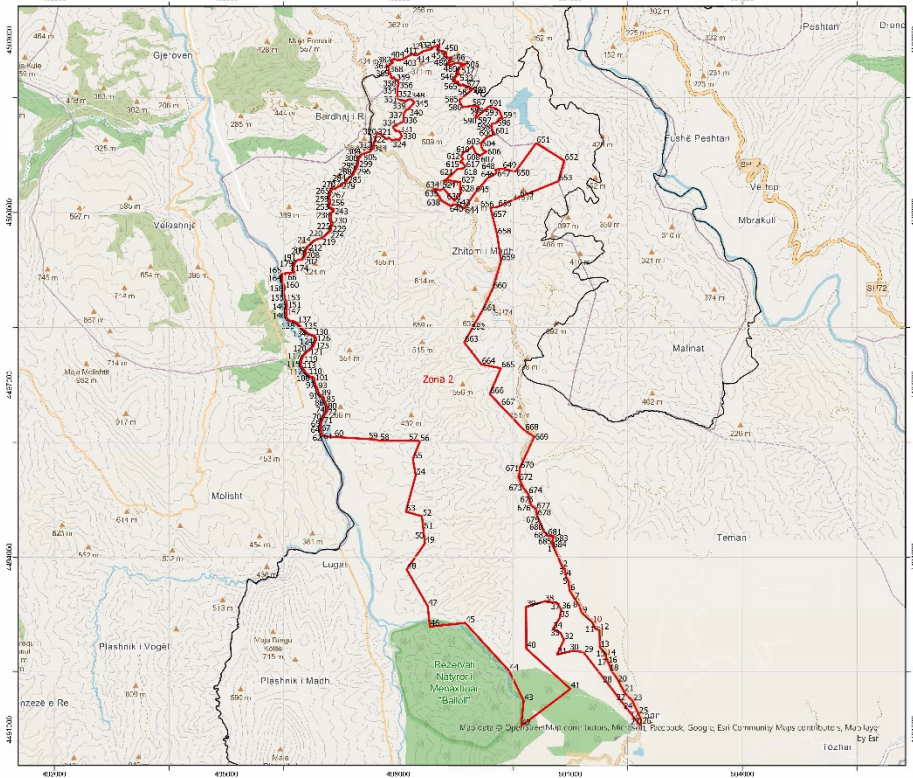
233	502969.81	4503158.43	653	507051.44	4509036.18
234	502956.27	4503167.21	654	507056.71	4509040.16
235	502944.78	4503175.21	655	507072.54	4509047.53
236	502932.07	4503186.29	656	507084.21	4509060.37
237	502915.1	4503213.17	657	507096.12	4509072.83
238	502907.14	4503240.03	658	507107.16	4509086.96
239	502904.95	4503270.89	659	507116.32	4509098.68
240	502925.81	4503365.35	660	507110.59	4509129.85
241	502910.61	4503402.58	661	507104.02	4509165.63
242	502957.68	4503428.1	662	507104.71	4509179.09
243	502931.42	4503472.06	663	507109.59	4509193.43
244	502875.26	4503448.26	664	507121.69	4509213.45
245	502851.05	4503464.92	665	507136.03	4509233.22
246	502816.68	4503464.92	666	507141.23	4509243.93
247	502798.51	4503474.05	667	507142.44	4509260.19
248	502770.9	4503518.88	668	507137.84	4509273.98
249	502714.16	4503515.88	669	507146.54	4509269.62
250	502701.69	4503600.42	670	507154.36	4509271.95
251	502697.35	4503629.82	671	507160.67	4509283.79
252	502683.79	4503721.78	672	507161.51	4509285.81
253	502679.83	4503748.64	673	507168.54	4509280.37
254	502795.07	4503778.35	674	507177.28	4509275.99
255	502875.45	4503853.07	675	507185.09	4509278.32
256	502955.33	4503899.3	676	507191.4	4509290.16
257	502996.96	4503921.31	677	507198.15	4509306.32
258	503021.82	4503934.46	678	507211.28	4509339.68
259	503018.92	4503946.07	679	507213.22	4509345.2
260	503027.18	4503950.78	680	507223.22	4509373.71
261	503036.07	4503955.85	681	507224.73	4509375.76
262	503039.75	4503954.43	682	507227.13	4509375.02
263	503048.79	4503947.53	683	507234.68	4509376.23
264	503055.64	4503936.12	684	507239.38	4509381.88
265	503066.48	4503919.44	685	507240.78	4509386.64
266	503080.07	4503906.15	686	507250.84	4509383.55
267	503131.1	4503852.39	687	507257.87	4509381.39
268	503139.95	4503838.2	688	507265.42	4509382.59
269	503149.97	4503819.27	689	507270.11	4509388.25
270	503157.06	4503786.58	690	507276.71	4509410.74
271	503157.6	4503763.9	691	507278.57	4509408.66
272	503152.52	4503742.27	692	507283.94	4509404.52
273	503150.04	4503714.79	693	507290.41	4509402.35
274	503152.21	4503695.77	694	507296.56	4509402.98
275	503157.58	4503666.7	695	507302.43	4509404.17
276	503159.94	4503656.64	696	507308.56	4509406.76
277	503166.15	4503652.51	697	507311.31	4509411.55
278	503173.73	4503650.64	698	507311.29	4509413.5
279	503182.43	4503649.9	699	507314.67	4509410.89

280	503191.37	4503651.4	700	507321.14	4509408.72
281	503198.15	4503646.71	701	507327.3	4509409.35
282	503213.14	4503634	702	507332.85	4509409.92
283	503242.01	4503607.44	703	507337.75	4509410.42
284	503260.68	4503591.4	704	507339.3	4509413.13
285	503270.57	4503583.67	705	507342.05	4509417.92
286	503274.49	4503584.28	706	507346.59	4509425.86
287	503283.89	4503595.03	707	507339.13	4509428.25
288	503286.34	4503598.07	708	507331.54	4509430.69
289	503302.06	4503585.79	709	507328.09	4509437.93
290	503314.62	4503601.4	710	507328.54	4509445.12
291	503320.75	4503609.01	711	507332.64	4509456.75
292	503324.64	4503607.54	712	507338.88	4509474.47
293	503326.94	4503602.8	713	507342.89	4509491.04
294	503331.36	4503583.24	714	507347.43	4509511.26
295	503335.07	4503577.12	715	507349.79	4509521.83
296	503340.72	4503572.71	716	507353.1	4509529.25
297	503366.11	4503557.59	717	507369.62	4509554.37
298	503381.9	4503548.24	718	507382.8	4509578.05
299	503393.43	4503543.89	719	507392.52	4509585.16
300	503399.88	4503543.69	720	507435.11	4509608.61
301	503407.96	4503546.86	721	507447.93	4509613.95
302	503417.41	4503552.81	722	507453.79	4509616.39
303	503424.17	4503550.26	723	507489.11	4509638.36
304	503430.61	4503550.06	724	507514.83	4509652.97
305	503438.7	4503553.23	725	507519.82	4509648.1
306	503447.07	4503558.5	726	507531.26	4509637.74
307	503452.83	4503558.25	727	507540.47	4509630.69
308	503460.07	4503562.26	728	507575.14	4509586.54
309	503461.55	4503564.85	729	507618.1	4509532.23
310	503462.09	4503564.98	730	507654.21	4509496.93
311	503472.46	4503565.1	731	507683.2	4509472.75
312	503483.57	4503564.62	732	507698.13	4509452.61
313	503488.64	4503564.41	733	507706.78	4509431
314	503495.47	4503576.8	734	507716.85	4509408.01
315	503503.71	4503591.74	735	507721.31	4509384.95
316	503512.27	4503602.21	736	507723.22	4509340.15
317	503521.16	4503608.75	737	507737.71	4509295.94
318	503531.19	4503612.55	738	507760.78	4509287.8
319	503539.77	4503598.18	739	507787.12	4509286.42
320	503545.71	4503592.92	740	507815.1	4509289.26
321	503562.58	4503587.79	741	507872.35	4509293.89
322	503574.65	4503585.41	742	507900.06	4509295.48
323	503597.93	4503582.87	743	507932.72	4509291.16
324	503620.9	4503582.3	744	507960.69	4509294.84
325	503652.6	4503578.73	745	507968.89	4509298.24
326	503671.57	4503580.13	746	507991.43	4509301.21

327	503672.37	4503583.22	747	508017.08	4509311.86
328	503671.94	4503586.38	748	508017.77	4509312.17
329	503683.33	4503585.1	749	508038.26	4509321.35
330	503702.3	4503586.5	750	508066.38	4509336.51
331	503703.11	4503589.59	751	508073.21	4509340.28
332	503702.8	4503591.84	752	508093.38	4509351.39
333	503761.96	4503609.86	753	508132.13	4509373.94
334	504001.5	4503682.8	754	508140.17	4509375.03
335	504516.7	4502834.1	755	508169.04	4509373.96
336	505174.2	4502354.2	756	508221.79	4509365.32
337	505996.5	4502905.8	757	508264.7	4509361.04
338	506549.8	4502847.5	758	508293.8	4509363.9
339	506704.46	4502935.61	759	508302.23	4509368.08
340	506764.13	4502969.61	760	508324.53	4509370.26
341	506853.1	4503020.3	761	508334.02	4509374.97
342	506942.2	4503402.1	762	508341.44	4509387.66
343	506499.12	4503877.86	763	508351.92	4509402.07
344	506672.4	4504316.39	764	508374.06	4509425.85
345	506244.11	4504544.42	765	508381.15	4509434.51
346	506191	4504572.69	766	508402.58	4509430.52
347	505967.59	4504691.63	767	508424.66	4509435.25
348	505995.61	4504704.69	768	508427.87	4509437.9
349	506015.38	4504715	769	508433.32	4509436.89
350	506059.21	4504728.1	770	508455.39	4509441.62
351	506106.37	4504743.77	771	508469.82	4509453.55
352	506139.26	4504758.14	772	508506.24	4509477.78
353	506160.78	4504769.65	773	508506.36	4509477.81
354	506169.17	4504770.31	774	508509.33	4509477.39
355	506188.72	4504775.57	775	508516.95	4509472.16
356	506217.15	4504788.5	776	508541.93	4509443.87
357	506236.37	4504797.68	777	508558.97	4509422.78
358	506244.7	4504804.5	778	508574.45	4509416.51
359	506269.5	4504815.71	779	508589.01	4509417.24
360	506287.91	4504822.36	780	508602.1	4509423.55
361	506314.41	4504831.63	781	508602.47	4509423.98
362	506330.33	4504836.01	782	508605.19	4509422.88
363	506339.23	4504841.43	783	508619.74	4509423.61
364	506350.63	4504847.2	784	508632.84	4509429.92
365	506374.15	4504850.65	785	508643.35	4509434.99
366	506404.9	4504856.05	786	508644.83	4509440.5
367	506409.7	4504857.87	787	508648.79	4509455.31
368	506435.63	4504862.42	788	508650.65	4509462.25
369	506450.63	4504868.11	789	508654.44	4509476.38
370	506459.27	4504872.41	790	508658.74	4509491.84
371	506462.19	4504873.28	791	508662.01	4509499.72
372	506467.39	4504872.36	792	508670.04	4509508.21
373	506476.93	4504871.63	793	508682.55	4509516.2

374	506484.48	4504872.56	794	508700.93	4509525.93
375	506493.11	4504877.42	795	508714.1	4509530.72
376	506494.65	4504879	796	508717.12	4509531.3
377	506498.13	4504878.73	797	508735.63	4509529.55
378	506507.66	4504878	798	508766.83	4509519.54
379	506515.21	4504878.93	799	508798.05	4509508.69
380	506523.84	4504883.79	800	508812.07	4509507.17
381	506532.7	4504892.85	801	508825.22	4509516.3
382	506547.38	4504907.58	802	508828.79	4509515.06
383	506558.72	4504920.6	803	508842.81	4509513.54
384	506565.72	4504935.01	804	508860.04	4509525.5
385	506571.09	4504940.99	805	508871.65	4509538.8
386	506583.38	4504954.67	806	508872.47	4509539.14
387	506618.22	4504981.15	807	508880.61	4509539.32
388	506668.78	4505010.07	808	508899.62	4509542.9
389	506747.72	4505048.4	809	508903.68	4509545.52
390	506803.32	4505076.86	810	508911.35	4509545.69
391	506816.39	4505084.17	811	508930.36	4509549.27
392	506838.11	4505096.3	812	508938.23	4509550.75
393	506871.79	4505115.18	813	508949.5	4509565.18
394	506873.2	4505115.61	814	508953.78	4509570.65
395	506873.75	4505115.62	815	508957.23	4509575.07
396	506883.84	4505114.61	816	508970.74	4509589.62
397	506895.37	4505110.82	817	508973.01	4509592.05
398	506915.7	4505096.77	818	508981.83	4509603.92
399	506936.4	4505083.32	819	508992.27	4509608.66
400	506944.53	4505082.57	820	509003.35	4509608.79
401	506951.81	4505082.94	821	509013.9	4509608.24
402	506955.45	4505082.98	822	509021.01	4509607.87
403	506961.04	4505084.16	823	509034.73	4509608.59
404	506969.4	4505087.62	824	509045.63	4509610.67
405	506971.42	4505089.3	825	509049.65	4509614.35
406	506975.27	4505088.94	826	509053.39	4509617.76
407	506982.54	4505089.3	827	509059.62	4509614.65
408	506986.19	4505089.35	828	509064.68	4509612.13
409	506994.69	4505089.44	829	509081.05	4509608.39
410	507000.14	4505093.99	830	509100.91	4509603.86
411	507007.63	4505100.23	831	509139.41	4509592.53
412	507018.2	4505108.45	832	509154.06	4509584.85
413	507033.48	4505118.18	833	509164.8	4509577.13
414	507041.54	4505123.31	834	509170.23	4509567.39
415	507050.46	4505127.33	835	509174.31	4509553.71
416	507059.76	4505131.53	836	509180.91	4509539.78
417	507060.39	4505140.33	837	509188.87	4509533.15
418	507061.36	4505153.79	838	509190.52	4509531.77
419	507062.91	4505165.01	839	509212.77	4509521.1
420	507064.17	4505174.07			

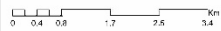
ZONA ME PËRPARËSI ZHVILLIMIN E EKONOMISË MALORE
ZONA 2, NJËSIA ADMINISTRATIVE TËRËPAN, BASHKIA POLIÇAN, QARKU BERAT



Njësia Administrative	Zona	Sipërfaqja (Ha)
Tërpan	Zona 1	5205
Tërpan	Zona 2	2693
Tërpan	Zona 3	1210
Tërpan	Zona 4	748
Tërpan	Zona 5	1691



1:50,000



Legjende

- Zona me përparësi zhvillim të ekonomisë malore
- Bashkia Polçan
- Nivertesa
- Lloçpave

Kategoritë e Rrethit Rrugor

- A. Autostretim
- C. Rruga Interurbane Dyçelore
- F. Rruga Lokale

*Zona 2 ndodhet në territorin e Njësia Administrative Tërpan me sipërfaqe prej 2693 ha.
 **Sistemi Koordinativ: KRQ,SH1/Gjuetia Referenciale Gjendore Shqiptare e PDS 8370.

Zona 2					
Njësia Administrative Tërpan					
Nr.	Koordinata X	Koordinata Y	Nr.	Koordinata X	Koordinata Y
1	500687.94	4494218.9	344	498254.01	4501888.08
2	500863.08	4493825.92	345	498278.36	4501916.42
3	500902.71	4493794.73	346	498272.7	4501919.39
4	500922.04	4493662.16	347	498255.01	4501941.41
5	500962.66	4493591.57	348	498221.33	4501965.94
6	500990.91	4493413.73	349	498170.19	4501963.67
7	501061.99	4493296.14	350	498127.79	4501935.86
8	501142.67	4493180.47	351	497997.86	4501966.84
9	501199.84	4493030.36	352	497983.42	4501996.49
10	501381.02	4492860.01	353	497978.99	4502044.68
11	501435.96	4492753.98	354	497985.95	4502146.52
12	501508.7	4492726.1	355	497989.62	4502198.19
13	501514.44	4492427.59	356	498004.4	4502232.75
14	501621.61	4492307.99	357	498002.48	4502277.93
15	501615.48	4492259.81	358	497983.23	4502282.75
16	501645.13	4492213.35	359	497949.81	4502312.86
17	501649.82	4492177.39	360	497922.59	4502348.22
18	501671.92	4492142.78	361	497896.62	4502328.22
19	501714.17	4492025.71	362	497875.98	4502335.39
20	501812.83	4491887.63	363	497868.76	4502350.27
21	501934.43	4491657.58	364	497877.14	4502362.66
22	501975.54	4491608.19	365	497854.94	4502418.78
23	502085.74	4491498.49	366	497840.09	4502416.84
24	502102.63	4491452.06	367	497828.13	4502493.69
25	502186.42	4491276.89	368	497832.3	4502498.92
26	502237.19	4491155.41	369	497827.72	4502514.17
27	502215.22	4491076.34	370	497822.37	4502532.01
28	501647.35	4491803.46	371	497821.72	4502539.99
29	501232.08	4492342.15	372	497823.23	4502547.04
30	501067.17	4492369.77	373	497826.76	4502551.81
31	500768.82	4492305.75	374	497832.83	4502560
32	500888.26	4492563.25	375	497841.86	4502566.4
33	500826.29	4492684.37	376	497854.15	4502569.63
34	500696.35	4492749.28	377	497862.49	4502571.81
35	500817.43	4492949.19	378	497864.84	4502577.73
36	500838.71	4493094.28	379	497867.02	4502583.22
37	500757.46	4493212.8	380	497868.8	4502587.69
38	500545.01	4493227.35	381	497871.97	4502590.15
39	500227.13	4493134.02	382	497877.13	4502592.02
40	500231.27	4492408.79	383	497894.99	4502598.25
41	500998.62	4491705.47	384	497899.75	4502599.91
42	500139.7	4491062.1	385	497899.1	4502605
43	500185.3	4491499.7	386	497900.74	4502607.69
44	499931.13	4492020.25	387	497896.66	4502624.18
45	499165.3	4492857.2	388	497892.99	4502638.98
46	498550.3	4492790.64	389	497892.91	4502645.98
47	498511.65	4493147.72	390	497895.6	4502655.12

48	498144.56	4493787.31	391	497900.59	4502660.08
49	498462.79	4494241.88	392	497906.42	4502665.04
50	498454.75	4494315.08	393	497925.01	4502667.92
51	498435.73	4494488.27	394	497937.48	4502667.78
52	498411.07	4494712.8	395	497951.24	4502664.15
53	498130.07	4494793.07	396	497961.65	4502660.63
54	498302.47	4495427.28	397	497969.24	4502658.2
55	498253.52	4495708.39	398	497989.99	4502652.03
56	498373.88	4496015.25	399	498002.6	4502651.61
57	498349.65	4496030.22	400	498017.19	4502650.1
58	497675.08	4496031.34	401	498031.18	4502651.38
59	497560.87	4496053.17	402	498045.15	4502654.06
60	496874.91	4496095.73	403	498074.66	4502663.16
61	496680.11	4496107.81	404	498109.75	4502680.64
62	496676.72	4496118.3	405	498138.4	4502698.89
63	496658.6	4496175.26	406	498162.04	4502713.45
64	496643.65	4496232.8	407	498187.34	4502729.98
65	496642.78	4496263.49	408	498206.84	4502739.45
66	496644.03	4496292.62	409	498228.34	4502745.85
67	496647.99	4496317.54	410	498244.54	4502749.96
68	496652.57	4496332.95	411	498259.95	4502749.02
69	496657.61	4496355.77	412	498270.05	4502748.01
70	496667.36	4496382.87	413	498295.62	4502740.46
71	496684.4	4496420.65	414	498311.34	4502737.56
72	496699.86	4496457.88	415	498325.62	4502738.28
73	496710.2	4496479.71	416	498342.38	4502742.11
74	496728.47	4496501.62	417	498358.2	4502755.17
75	496738.92	4496514.44	418	498375.16	4502766.57
76	496748.34	4496524.08	419	498390.2	4502773.75
77	496756.68	4496534.76	420	498404.67	4502782.59
78	496762.37	4496546.47	421	498419.99	4502789.49
79	496760.65	4496558.62	422	498427.21	4502795.45
80	496758.93	4496570.25	423	498434.09	4502805.62
81	496759.06	4496603.73	424	498439.66	4502809.04
82	496759.07	4496604.66	425	498444.96	4502810.5
83	496755.54	4496635.32	426	498451.96	4502810.86
84	496744.2	4496654.78	427	498464.82	4502812.97
85	496733.74	4496690.66	428	498479.62	4502817.06
86	496711.63	4496726.4	429	498512.58	4502825.28
87	496698.28	4496777.87	430	498545.65	4502828.93
88	496678.06	4496792.19	431	498565.45	4502836.46
89	496656.79	4496800.95	432	498585.18	4502850.97
90	496635.88	4496824.01	433	498602.62	4502868.82
91	496618.13	4496848.68	434	498614.55	4502879.04
92	496597.04	4496887.62	435	498631	4502885.38
93	496588.69	4496924.05	436	498648.31	4502890.62
94	496582.6	4496947.27	437	498668.44	4502893.93
95	496577.15	4496960.97	438	498681.02	4502895.76
96	496568.02	4496973.04	439	498699.46	4502900.45
97	496558.39	4496981.93	440	498713.69	4502904.81

98	496554.41	4496992.67	441	498718.66	4502901.76
99	496552.92	4496996.69	442	498718.34	4502892.93
100	496544.68	4497023.07	443	498710.8	4502877.17
101	496538.93	4497063.76	444	498702.26	4502850.65
102	496532.63	4497105.51	445	498699.54	4502833.34
103	496521.83	4497124.45	446	498705.22	4502826.13
104	496513.79	4497133.36	447	498723.25	4502817.09
105	496504.75	4497143.36	448	498737.31	4502812.21
106	496495.22	4497136.85	449	498760.5	4502807.96
107	496487.34	4497131.47	450	498794.76	4502800.44
108	496470.88	4497135.51	451	498824.69	4502791.74
109	496456.45	4497148.06	452	498834.4	4502787.65
110	496427.61	4497169.96	453	498837.95	4502783.35
111	496385.83	4497213.42	454	498837.74	4502776.9
112	496347.09	4497268.57	455	498834.67	4502751.24
113	496312.14	4497316.34	456	498833.56	4502738.06
114	496298.05	4497344.77	457	498833.48	4502730.39
115	496298.35	4497365.42	458	498834.39	4502724.23
116	496302.77	4497395.11	459	498835.6	4502716.69
117	496314.9	4497446.07	460	498847.5	4502704.22
118	496332.92	4497490.74	461	498855.96	4502698.99
119	496350.63	4497516.35	462	498865.39	4502695.32
120	496406.09	4497573.09	463	498876.91	4502692.37
121	496438.63	4497597.81	464	498887.92	4502689.55
122	496478.48	4497631.61	465	498902.06	4502694.23
123	496515.11	4497669.62	466	498915.17	4502698.59
124	496524.4	4497690.37	467	498919.39	4502696.95
125	496546.04	4497742.49	468	498922.56	4502689.43
126	496564.62	4497784.52	469	498923.82	4502679.89
127	496562.26	4497805.67	470	498924.29	4502673.45
128	496557.27	4497825.2	471	498922.98	4502667.69
129	496541.68	4497846.72	472	498917.05	4502658.94
130	496537.27	4497852.8	473	498909.42	4502652.83
131	496523.03	4497857.63	474	498905.95	4502650.27
132	496483.7	4497870.95	475	498906.03	4502650.12
133	496451.84	4497879.58	476	498909.38	4502643.87
134	496408.13	4497906.08	477	498915.07	4502636.65
135	496345.61	4497958.31	478	498922.78	4502626.85
136	496253.55	4498055.3	479	498902.94	4502618.04
137	496233.09	4498077.2	480	498872.84	4502604.67
138	496201.16	4498092.18	481	498864.8	4502598
139	496169.86	4498107.89	482	498861.76	4502594.32
140	496168.15	4498108.75	483	498859.59	4502587.57
141	496140.56	4498113.73	484	498859.39	4502581.13
142	496102.38	4498120.18	485	498859.09	4502572.07
143	496072	4498138.36	486	498860.75	4502572.04
144	496061.75	4498154.65	487	498876.3	4502571.8
145	496053.57	4498175.74	488	498891.45	4502569.45
146	496048.04	4498196.85	489	498907.45	4502566.69
147	496043.05	4498216.91	490	498916.41	4502566.65

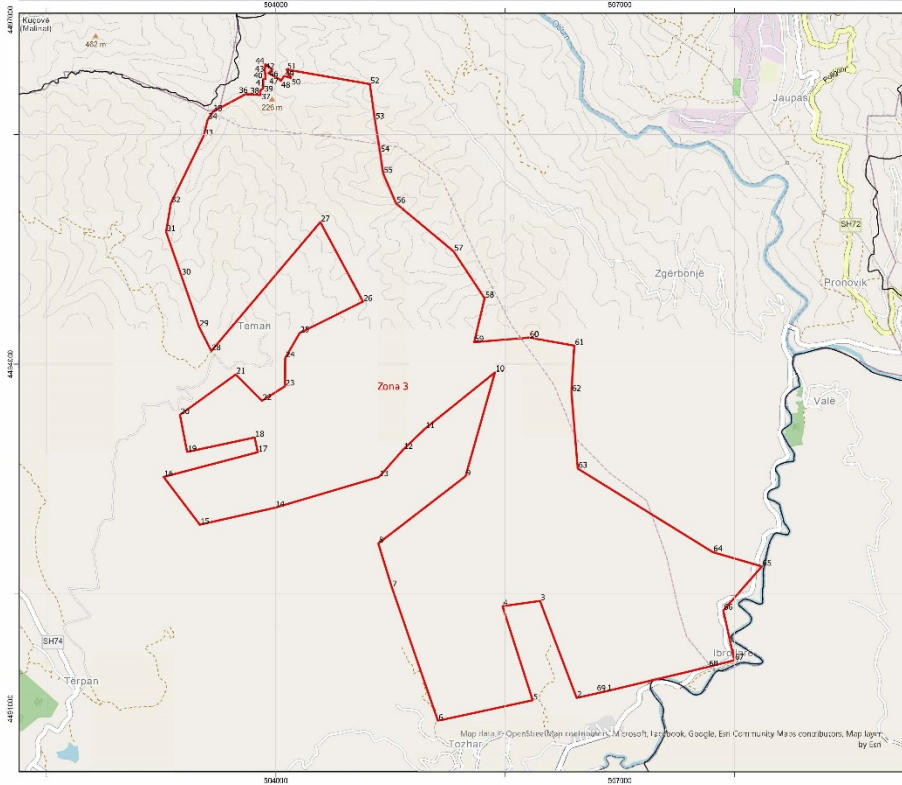
148	496040.67	4498240.17	491	498937.47	4502574.17
149	496046.9	4498296.88	492	498950.43	4502580.34
150	496055.14	4498363.68	493	498959.19	4502586.04
151	496055.26	4498400.2	494	498967.69	4502589.78
152	496046.85	4498441.4	495	498983.04	4502594.16
153	496037.8	4498462.43	496	498996.03	4502597.39
154	496035.97	4498466.68	497	499029.97	4502601.97
155	496020.83	4498494.57	498	499052.84	4502602.09
156	496011.7	4498553.22	499	499071.76	4502600.77
157	496004.87	4498594.97	500	499084.23	4502598.62
158	496002.99	4498620.88	501	499107.29	4502589.95
159	496005.92	4498642.09	502	499123.5	4502585.48
160	496018.7	4498682.47	503	499143.57	4502579.18
161	496016.28	4498708.91	504	499154.32	4502575.8
162	496003.12	4498749.52	505	499163.25	4502578.75
163	495987.95	4498780.05	506	499170.45	4502581.13
164	495974.15	4498802.21	507	499173.17	4502582.03
165	495975.69	4498937.79	508	499175.64	4502577.83
166	495981.52	4498939.02	509	499164.71	4502568.6
167	496007.83	4498941	510	499152.78	4502558.52
168	496036.36	4498944.12	511	499144.44	4502553.38
169	496095.34	4498954.6	512	499138.4	4502553.46
170	496096.89	4498944.22	513	499132.21	4502555.77
171	496144.29	4498950.78	514	499122.04	4502563.36
172	496174.91	4498955.47	515	499113.29	4502556.82
173	496190.68	4498960.69	516	499102.08	4502545.77
174	496186.84	4498970.1	517	499088.18	4502536.51
175	496184.8	4498973.08	518	499078.99	4502531.36
176	496177.13	4498984.33	519	499069.56	4502523.27
177	496172.61	4498995.26	520	499069.1	4502522.87
178	496172.93	4499008.65	521	499067.4	4502515.82
179	496173.97	4499052.08	522	499063.66	4502500.23
180	496179.96	4499079.6	523	499057.5	4502487.7
181	496182.35	4499091.67	524	499053.78	4502482.05
182	496187.58	4499099.57	525	499047.34	4502469.94
183	496192.24	4499108.31	526	499044.78	4502461.22
184	496194.03	4499123.73	527	499042.57	4502446.07
185	496190.63	4499127.33	528	499036.02	4502430.73
186	496186.09	4499132.14	529	499031.64	4502422
187	496186.06	4499134.75	530	499030.84	4502420.42
188	496192.46	4499138.28	531	499047.27	4502414.76
189	496203.88	4499144.57	532	499062.59	4502409.47
190	496214.7	4499153.1	533	499061.91	4502406.81
191	496221.4	4499155.41	534	499057.09	4502399.61
192	496230.28	4499162.24	535	499054.6	4502396.78
193	496235.25	4499168.74	536	499048.6	4502395.31
194	496245.82	4499175.02	537	499036.28	4502394.89
195	496253.7	4499178.13	538	499028.29	4502394.8
196	496263.33	4499180.48	539	499022.85	4502393.06
197	496272.58	4499179.75	540	499018.83	4502389.93

198	496288.03	4499175.72	541	499015.71	4502380.51
199	496301.48	4499175.87	542	499011.88	4502372.49
200	496314.57	4499182.18	543	499008.13	4502366.44
201	496330.13	4499193.56	544	498997.9	4502357.49
202	496349.5	4499213.67	545	498990.27	4502350.82
203	496364.89	4499239.62	546	498981.42	4502340.78
204	496372.56	4499255.67	547	498976.59	4502335.29
205	496376.63	4499267.2	548	498977.59	4502333.03
206	496377.25	4499286.53	549	498981.04	4502325.23
207	496378.78	4499299.16	550	498984.1	4502314.76
208	496383.54	4499323.86	551	498985.18	4502305.81
209	496387.83	4499340.71	552	498983.29	4502299.62
210	496393.16	4499357.9	553	498979.28	4502294.96
211	496401.76	4499371.96	554	498977.11	4502288.91
212	496421.11	4499403.6	555	498976.42	4502275.32
213	496466.84	4499446.83	556	498976.27	4502272.34
214	496477.84	4499457.27	557	498986.4	4502272.07
215	496504.94	4499482.98	558	498997.47	4502271.78
216	496549.37	4499517.09	559	499012.41	4502275.59
217	496570.96	4499527.84	560	499022.03	4502279.62
218	496619.82	4499541	561	499032.95	4502280.58
219	496658.9	4499553.35	562	499040.12	4502277.58
220	496688.82	4499569.8	563	499044.12	4502271.16
221	496715.91	4499589.71	564	499042.7	4502260.53
222	496749.2	4499618.1	565	499041.36	4502254.77
223	496779.73	4499642.26	566	499045.63	4502248.93
224	496803.27	4499666.33	567	499057.52	4502238.01
225	496822.54	4499695.96	568	499071.11	4502225.28
226	496828.1	4499731.11	569	499080.48	4502213.62
227	496828.42	4499733.14	570	499086.86	4502207.11
228	496834.63	4499762.11	571	499097.19	4502209.89
229	496841.99	4499779.84	572	499111.52	4502218.17
230	496856.89	4499800.17	573	499118.73	4502225.26
231	496855.04	4499810.62	574	499124.55	4502224.82
232	496845.33	4499830.85	575	499140.27	4502221.92
233	496836.49	4499844.76	576	499151.25	4502217
234	496825.18	4499868.96	577	499172.13	4502204.08
235	496825.74	4499878.81	578	499181.57	4502200.51
236	496826.6	4499893.9	579	499224.05	4502168.13
237	496823.61	4499917.64	580	499244.82	4502166.53
238	496822.66	4499925.26	581	499261.92	4502165.6
239	496821.2	4499961.61	582	499275.4	4502162.11
240	496817.05	4499977.87	583	499285.88	4502156.53
241	496815.22	4499985.04	584	499297.56	4502142.54
242	496820.83	4499990.51	585	499060.74	4501952.13
243	496872.35	4500016.87	586	499120.4	4501834.05
244	496874.25	4500021.93	587	499278.6	4501857.06
245	496875.19	4500037.91	588	499403.09	4501846.49
246	496872.52	4500051.32	589	499346.21	4501656.07
247	496869.26	4500059.68	590	499373.59	4501662.55

248	496853.9	4500066.06	591	499568.1	4501843.07
249	496843.58	4500065.41	592	499693.43	4501814.38
250	496827.08	4500073.95	593	499761.13	4501770.22
251	496818.7	4500090	594	499818	4501634.78
252	496817.88	4500091.56	595	499764.24	4501644.7
253	496807.78	4500096.22	596	499710.6	4501562.68
254	496791.56	4500103.71	597	499635.01	4501543.24
255	496796.29	4500129.69	598	499616.95	4501512.21
256	496808.95	4500156.03	599	499647.15	4501406.39
257	496812.73	4500172.74	600	499663.45	4501374.82
258	496809.36	4500191.49	601	499680.74	4501363.65
259	496802	4500232.41	602	499549.64	4501313.46
260	496800.01	4500244.51	603	499438.46	4501209.99
261	496793.51	4500257.4	604	499450.37	4501136.52
262	496793.4	4500267.19	605	499477.47	4501083.69
263	496799.88	4500279.43	606	499538.05	4501062.35
264	496804.47	4500294.04	607	499426.78	4500990.19
265	496806.65	4500311.79	608	499346	4501034.26
266	496811.69	4500334.6	609	499291.71	4501152.13
267	496820.91	4500360.63	610	499257.9	4501118.9
268	496831.53	4500381.39	611	499137.46	4501042.87
269	496838.38	4500406.87	612	499090.66	4500980.92
270	496842.45	4500420.94	613	499108.08	4500959.25
271	496841.51	4500433.89	614	499128.93	4500937.14
272	496850.1	4500422.87	615	499076.77	4500872.59
273	496863.45	4500412.18	616	499114.05	4500871.74
274	496885.23	4500405.02	617	499166.62	4500801.83
275	496896.06	4500406.73	618	499133.28	4500769.1
276	496912.91	4500419.66	619	499035.6	4500756.26
277	496932.83	4500440.89	620	499000.4	4500727.61
278	496970.22	4500454.2	621	498899.46	4500634.87
279	496995.9	4500462.06	622	498840.89	4500574.88
280	497013.28	4500485.22	623	498789.19	4500551.15
281	497033.17	4500509.26	624	498829.32	4500547.87
282	497079.78	4500527	625	498857.47	4500570.92
283	497090.06	4500531.75	626	498953.06	4500541.41
284	497095.04	4500537.13	627	499083.44	4500532.15
285	497108.15	4500569.09	628	499074.81	4500420.21
286	497116.11	4500582.97	629	499077.05	4500396.17
287	497171	4500627.53	630	499093.52	4500342.49
288	497195.99	4500646.72	631	498979.63	4500201.26
289	497211.25	4500660.2	632	498780.47	4500418.32
290	497218.83	4500670.79	633	498725.52	4500384.95
291	497222.21	4500681.33	634	498652.62	4500416.11
292	497228.34	4500696.81	635	498618.09	4500402.21
293	497237.26	4500712.31	636	498608.22	4500402.47
294	497248.94	4500732.05	637	498696.01	4500302.06
295	497259.19	4500754.58	638	498743.45	4500213.73
296	497269.45	4500776.4	639	498841.83	4500153.05
297	497278.99	4500799.62	640	498885.1	4500128.12

298	497290.59	4500825.66	641	498921.55	4500118.72
299	497296.53	4500857.94	642	498961.66	4500136.98
300	497302.57	4500881.12	643	499003.07	4500139.8
301	497303.59	4500914.74	644	499150.52	4500071.07
302	497308.77	4500951.21	645	499338.01	4500342.27
303	497326.72	4500973.83	646	499559.51	4500599.64
304	497351.83	4501000.52	647	499706.87	4500680.53
305	497376.86	4501016.21	648	499695.73	4500743.63
306	497399.15	4501026.97	649	499811.7	4500764.13
307	497423.56	4501035.65	650	500042.42	4500712
308	497447.3	4501041.52	651	500402.2	4501206.8
309	497479.4	4501051.69	652	500892.89	4500903.32
310	497510.81	4501060.45	653	500789.39	4500543.54
311	497524.64	4501075.31	654	500113.2	4500267.88
312	497541.16	4501100.71	655	499733.2	4500097.14
313	497547.08	4501118.89	656	499606.45	4500079.78
314	497558.11	4501133.86	657	499633.43	4499971.05
315	497564.43	4501144.29	658	499722.33	4499612.8
316	497568.2	4501157.78	659	499791.36	4499162.76
317	497566.71	4501190.26	660	499642.39	4498671.22
318	497567.02	4501196.4	661	499459.44	4498286.2
319	497572.12	4501211.46	662	499266.64	4497946.49
320	497633.44	4501392.35	663	499149.07	4497739.34
321	497719.02	4501338.39	664	499446.69	4497356.34
322	497797.11	4501273.4	665	499786.48	4497288.81
323	497828.09	4501304.22	666	499594.37	4496840.32
324	497890.43	4501253.38	667	499785.4	4496640.86
325	497893.4	4501257.14	668	500200.93	4496207.01
326	497946.86	4501269.85	669	500370.35	4496099.3
327	497956.9	4501275.93	670	500114.54	4495547.85
328	497983.19	4501266.64	671	500120.78	4495495.28
329	498011.11	4501264.93	672	500093.94	4495399.48
330	498064.57	4501331.18	673	500176.59	4495211.25
331	498012.25	4501413.95	674	500262.64	4495101.29
332	497962.18	4501423.28	675	500298.86	4494938.45
333	497953.44	4501417.42	676	500322.27	4494896.89
334	497901.62	4501494.67	677	500400.56	4494840.86
335	498093.77	4501587.2	678	500419.06	4494716.82
336	498090.67	4501672.12	679	500474.37	4494594.91
337	498086.72	4501692.44	680	500530.64	4494464.69
338	498096.45	4501722.46	681	500602.51	4494377.12
339	498139.73	4501793.07	682	500619.79	4494367.66
340	498180.12	4501797.1	683	500711.27	4494363.02
341	498180.34	4501816.85	684	500687.76	4494287.65
342	498198.45	4501822.79	685	500687.94	4494218.9
343	498228.03	4501866.37			

ZONA ME PËRPARËSI ZHVILLIMIN E EKONOMISË MALORE
ZONA 3, NJËSIA ADMINISTRATIVE TERPAN, BASHKIA POLIÇAN, QARKU BERAT



Njësia Administrative	Zona	Sipërfaqja (Ha)
Veçtop	Zona 1	5205
Terpan	Zona 2	2633
Terpan	Zona 3	1210
Terpan	Zona 4	748
Terpan	Zona 5	1691



1:25,000



- Legjende**
- Zona me përparësi zhvillimin e ekonomisë malore
 - Bashkia Poliçan
 - Ndërtës
 - Troje
- Kategoritë e Rrjetit Rrugor**
- C. Rruga Interurbane Dyresore
 - F. Rruga Lokale

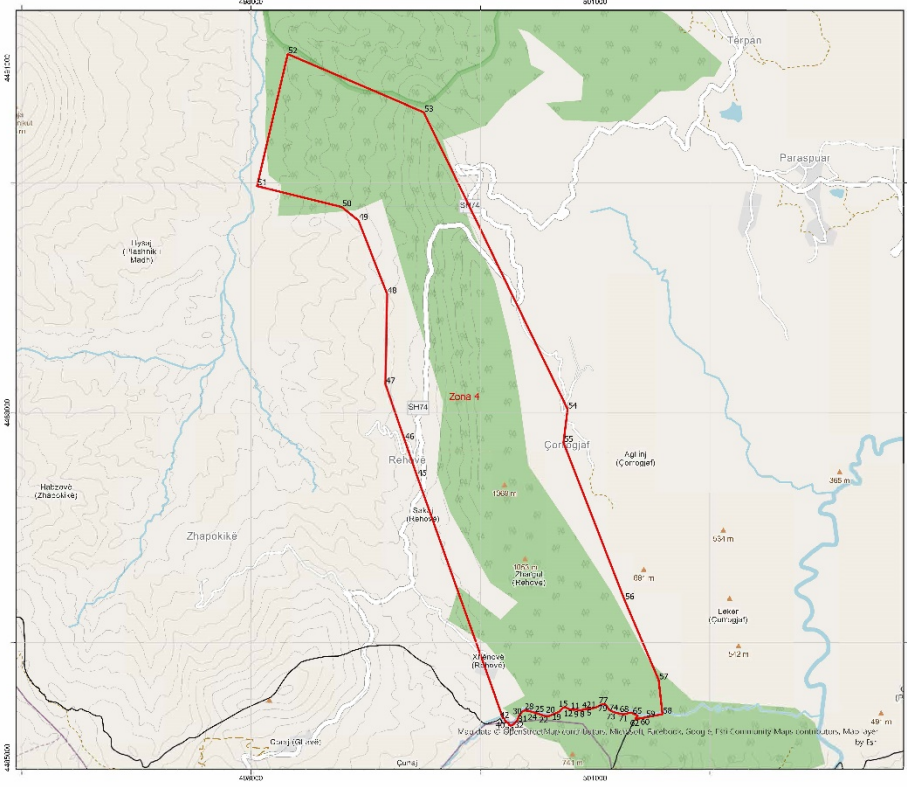
*Zona 3 ndahet në shtetëri e njësi Administrative Terpan me sipërfaqe prej 1210 ha.


**Sistemi Koordinativ: KRQ/SH (Kartica Referenciale Gjeografike Shqiptare) © 2013 IRI/3

Zona 3
Njësia Administrative Tërpan

Nr.	Koordinata X	Koordinata Y	Nr.	Koordinata X	Koordinata Y
1	506885.58	4491154.13	36	503737.08	4496353.03
2	506623.44	4491095.51	37	503866.41	4496345.19
3	506304.01	4491940.62	38	503864.01	4496383.5
4	505976.89	4491894.43	39	503890.35	4496406.46
5	506240.37	4491074.94	40	503890.12	4496485.36
6	505413.64	4490896.02	41	503910.5	4496485.42
7	505011.5	4492060.14	42	503904.22	4496569.46
8	504893.63	4492441.75	43	503906.6	4496580.42
9	505654.43	4493026.68	44	503907.39	4496613.99
10	505911.4	4493932.1	45	503968.64	4496568.15
11	505301	4493441.44	46	503935.23	4496535.78
12	505111	4493259.63	47	504029.11	4496485.14
13	504900.25	4493020.41	48	504044.03	4496467.1
14	503992.62	4492752.59	49	504071.93	4496511.3
15	503336.92	4492605.03	50	504131.78	4496494.22
16	503021.32	4493021.06	51	504094.2	4496567.42
17	503842.77	4493236.75	52	504819.75	4496440.79
18	503815.35	4493364.95	53	504863.71	4496131.73
19	503226.23	4493239.05	54	504908.88	4495845.82
20	503163.9	4493561.94	55	504935.88	4495662.12
21	503649.94	4493913.79	56	505048.76	4495400.25
22	503879.33	4493684.75	57	505549.76	4494983.25
23	504079.74	4493811.51	58	505820.77	4494573.71
24	504081.93	4494053.04	59	505730.41	4494191.3
25	504208.13	4494271.37	60	506209.78	4494231.07
26	504760.29	4494545.14	61	506603.22	4494161.31
27	504387.96	4495237.67	62	506577.86	4493762.66
28	503437.01	4494114.36	63	506633.26	4493093.99
29	503330.58	4494325.63	64	507811.49	4492365.59
30	503174.67	4494774.09	65	508239.16	4492241.31
31	503042.99	4495152.84	66	507902.67	4491856.99
32	503084.99	4495402.64	67	507999.08	4491422.97
33	503370	4495988.32	68	507772.77	4491365.75
34	503405.24	4496129.98	69	506885.58	4491154.13
35	503449.41	4496197.97			


ZONA ME PËRPARËSI ZHVILLIMIN E EKONOMISË MALORE
ZONA 4, NJËSIA ADMINISTRATIVE TËRPAN, BASHKIA POLIÇAN, QARKU BERAT



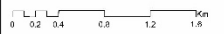


Bashkia Polican

Njësia Administrative	Zona	Sipërfaqja (Ha)
Vertop	Zona 1	5205
Terpan	Zona 2	2693
Terpan	Zona 3	1210
Terpan	Zona 4	748
Terpan	Zona 5	1691



1:25,000



0 0.2 0.4 0.8 1.2 1.6 Km

Legjende

- Zona me përparësi zhvillimin e ekonomisë malore
- Bashkia Polican
- Nivertens
- Llogore
- Kategoritë e Rrethit Rrutor
- C. Rruge Interurbane Dydrejore
- F. Rruge Lokale

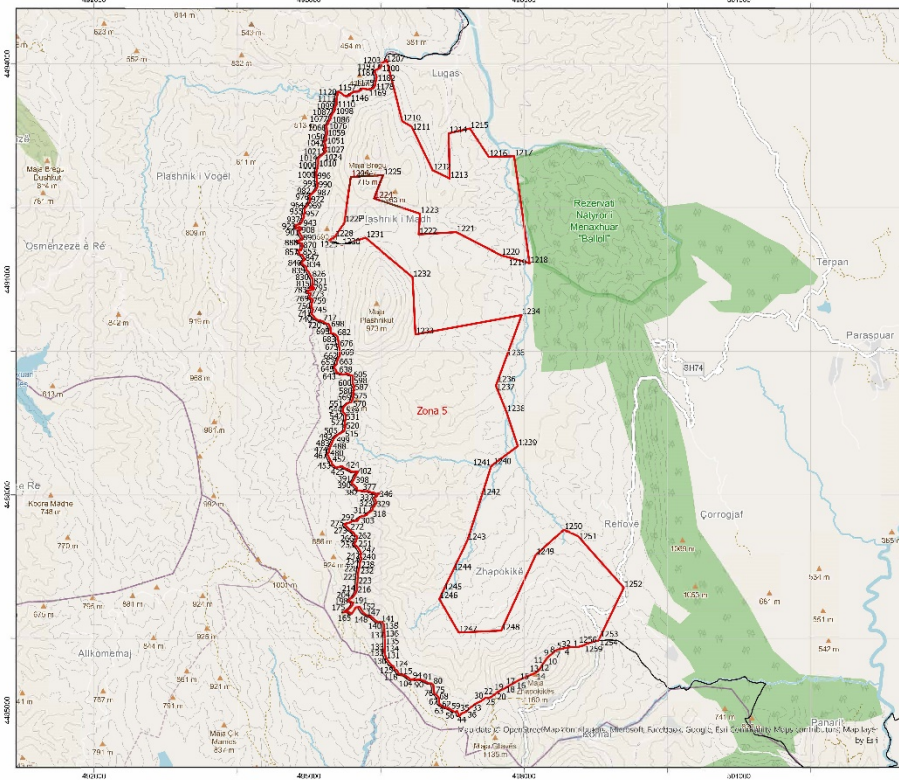
*Zona 4 ndodhet në territorin e Njësia Administrative Terpan me sipërfaqe prej 748 ha.

**Shtetimi Kordinativalë: KRQJSH -Gjenerale Referuarë Gjendjeve Shpirtoreve SHPSB 8877.

Zona 4
Njësia Administrative Tërpan

Nr.	Koordinata X	Koordinata Y	Nr.	Koordinata X	Koordinata Y
1	500979.83	4485430.25	43	500202.71	4485345.48
2	500971.5	4485429.59	44	500196.37	4485343.82
3	500937.6	4485426.89	45	499448.69	4487447.65
4	500933.28	4485426.55	46	499339.12	4487765.12
5	500922.42	4485424.07	47	499171.8	4488249.94
6	500910.36	4485421.32	48	499186.19	4489036.13
7	500894.21	4485417.64	49	498936.52	4489673.3
8	500863.57	4485412	50	498791.13	4489791.29
9	500862.14	4485412.39	51	498052.06	4489974.1
10	500849.41	4485415.95	52	498319.55	4491122.02
11	500838.08	4485419.12	53	499505.8	4490616.3
12	500811.63	4485417.76	54	500760.19	4488033.1
13	500781.95	4485420.6	55	500724.42	4487742.92
14	500745.4	4485436.04	56	501257.63	4486371.14
15	500740.46	4485438.13	57	501554.58	4485674.82
16	500718.28	4485433.64	58	501587.74	4485379.3
17	500703.64	4485417.59	59	501439.45	4485351.17
18	500691.1	4485402.63	60	501389.5	4485341.69
19	500664.01	4485390.77	61	501379.66	4485340.88
20	500656.34	4485387.41	62	501351.41	4485338.55
21	500612.3	4485369.06	63	501352.46	4485340.25
22	500596.28	4485362.38	64	501371.24	4485364.81
23	500563.45	4485363.07	65	501355.25	4485374.16
24	500498.29	4485384.71	66	501323.32	4485389.68
25	500470.99	4485393.78	67	501309.71	4485391.3
26	500414.7	4485409.02	68	501298.93	4485392.58
27	500400.73	4485410.26	69	501278.78	4485384.86
28	500382.91	4485411.84	70	501270.47	4485381.67
29	500367.14	4485402.13	71	501246.16	4485378.22
30	500339.98	4485370.06	72	501219.63	4485383.21
31	500320.38	4485324.32	73	501182.49	4485391.26
32	500291.1	4485292.22	74	501153.78	4485401.52
33	500286.8	4485290.35	75	501121.82	4485419.16
34	500263.71	4485280.26	76	501105.67	4485443.33
35	500250.93	4485286.47	77	501087.42	4485465.35
36	500241.43	4485305.95	78	501080.67	4485465.61
37	500241.18	4485306.48	79	501066.23	4485466.17
38	500229.48	4485310.58	80	501048.32	4485458.56
39	500225.74	4485308.83	81	501024.13	4485444.52
40	500217.86	4485316.54	82	500996.01	4485435.46
41	500212.15	4485330.5	83	500979.83	4485430.25
42	500208.6	4485339.19			

ZONA ME PËRPARËSI ZHVILLIMIN E EKONOMISË MALORË
ZONA 5, NJËSIA ADMINISTRATIVE TËRËPAN, BASHKIA POLIÇAN, QARKU BERAT



Bashkia Polican

Njësia Administrative	Zona	Sipërfaqje (Ha)
Verëtop	Zona 1	5205
Tërpan	Zona 2	2693
Tërpan	Zona 3	1210
Tërpan	Zona 4	748
Tërpan	Zona 5	1691



1:40,000



- Legjende**
- Zona me përparësi zhvillimin e ekonomisë malorë
 - Bashkia Polican
 - Nivellim
 - Llogaritje
 - Kategori e Rrethit Rrethor**
 - C Rreth Interurbane Dyeshore
 - F Rreth Lokale

*Zona e ndodhet në territorin e Njësia Administrative Tërpan me sipërfaqe prej 1691 ha

**Sistemi Koordinativ: KRQ/SH (Kartica Referencë Gjendëse Shqipëri) EPSG:31471

Zona 5
Njësia Administrative Tërpan

Nr.	Koordinata X	Koordinata Y	Nr.	Koordinata X	Koordinata Y
1	498761.32	4485882.99	632	495444.08	4489684.71
2	498661.81	4485881.86	633	495441.97	4489684.69
3	498573.4	4485866.4	634	495439.55	4489688.1
4	498558.26	4485863.75	635	495437.39	4489691.78
5	498490.04	4485847.47	636	495431.85	4489690.13
6	498479.07	4485844.85	637	495424.19	4489689.25
7	498435.82	4485830.6	638	495415.72	4489692.08
8	498394.99	4485789.9	639	495407.18	4489695.67
9	498354.06	4485758.74	640	495401.07	4489698.25
10	498321.6	4485726.61	641	495396.83	4489699.26
11	498268.45	4485651.89	642	495389.94	4489700.24
12	498212.28	4485563.38	643	495383.92	4489700.44
13	498170.81	4485526.65	644	495381.2	4489723.69
14	498162.9	4485523.15	645	495380.62	4489728.71
15	497934.84	4485422.34	646	495380.11	4489733.08
16	497888.55	4485396.4	647	495372	4489741.84
17	497809.67	4485349.98	648	495366.91	4489747.34
18	497733.93	4485306.78	649	495360.2	4489755.99
19	497668.67	4485273.22	650	495353.99	4489767.3
20	497613.97	4485241.89	651	495351.01	4489777.39
21	497578.3	4485216.59	652	495356.68	4489786.11
22	497573.01	4485212.84	653	495364.48	4489798.11
23	497542.59	4485188.15	654	495373.39	4489805.88
24	497522.69	4485180.56	655	495380.16	4489815.22
25	497502.53	4485172.87	656	495384.59	4489821.62
26	497483.03	4485175.31	657	495389.47	4489828.67
27	497482.84	4485175.33	658	495388.59	4489842.03
28	497479.21	4485175.78	659	495387.95	4489851.82
29	497461.21	4485175.58	660	495391.26	4489862.97
30	497438.11	4485158.38	661	495396.68	4489875.2
31	497395.06	4485127.19	662	495401.33	4489885.57
32	497355.01	4485110.85	663	495410.39	4489902.87
33	497326.61	4485094.65	664	495414.52	4489911.91
34	497279.36	4485060.23	665	495418.91	4489921.49
35	497247.84	4485038.7	666	495424.09	4489931.07
36	497203.87	4484993.8	667	495428.21	4489940.91
37	497190.22	4484983.59	668	495430.98	4489953.64
38	497173.9	4484976	669	495428.24	4489961.81
39	497154.38	4484969.42	670	495429.64	4489978.49
40	497142.8	4484963.47	671	495428.41	4489993.29
41	497128.56	4484959.6	672	495427.18	4490008.62
42	497122.25	4484955.29	673	495427.01	4490023.97
43	497116.01	4484945.7	674	495425.49	4490040.62

44	497104.57	4484927.04	675	495423	4490050.64
45	497101.74	4484925.22	676	495418.89	4490063.3
46	497094.1	4484926.59	677	495416.68	4490071.47
47	497083.44	4484932.82	678	495416.6	4490078.09
48	497083.34	4484941.29	679	495418.09	4490087.36
49	497083.26	4484948.7	680	495399.68	4490194.04
50	497080.49	4484959.78	681	495391.84	4490208.24
51	497074.01	4484970.83	682	495388.22	4490214.81
52	497069.64	4484982.95	683	495376.59	4490223.41
53	497066.96	4484990.37	684	495367.79	4490229.93
54	497052.66	4484986.47	685	495356.84	4490238.53
55	497040.52	4484983.15	686	495348.57	4490244.26
56	497029.93	4484983.03	687	495336.62	4490248.36
57	497014.01	4484987.09	688	495330.81	4490247.23
58	497004.38	4484992.93	689	495324.47	4490247.16
59	496980.9	4485009.61	690	495312.8	4490249.15
60	496965.64	4485020.14	691	495304	4490255.66
61	496944.15	4485028.78	692	495302.05	4490264.37
62	496916.55	4485035.35	693	495303.24	4490275.49
63	496886.28	4485044	694	495299.91	4490289.21
64	496851.11	4485064.78	695	495297.59	4490307.18
65	496826.55	4485083.03	696	495299.35	4490315.4
66	496814.16	4485101.94	697	495298.98	4490324.39
67	496810.74	4485123.08	698	495298.64	4490331.27
68	496812.08	4485145.33	699	495293.22	4490342.32
69	496812.4	4485163.86	700	495286.27	4490348.59
70	496812.55	4485172.32	701	495283.11	4490353.47
71	496809.62	4485176	702	495282.71	4490359.93
72	496794.58	4485194.89	703	495282.06	4490370.24
73	496786.5	4485207.5	704	495278.31	4490374.43
74	496769.36	4485224.78	705	495270.86	4490378.05
75	496757.63	4485232.58	706	495259.49	4490383.57
76	496745.33	4485243.03	707	495242.46	4490385.93
77	496740.31	4485265.74	708	495237.16	4490386.66
78	496739.42	4485297.49	709	495232.65	4490388.2
79	496735.3	4485334.5	710	495227.58	4490391.58
80	496726.56	4485358.22	711	495220.37	4490397.32
81	496712.66	4485369.71	712	495215.06	4490399.11
82	496701.52	4485371.7	713	495210.97	4490400.49
83	496680.88	4485371.99	714	495207.87	4490403.52
84	496662.28	4485377.61	715	495203.85	4490407.71
85	496645.78	4485385.89	716	495198.51	4490411.88
86	496635.66	4485391.6	717	495194.25	4490414.48
87	496629.23	4485397.88	718	495183.89	4490418.33
88	496613.78	4485406.7	719	495180.44	4490419.35
89	496610.63	4485408.5	720	495174.36	4490418.49
90	496601.57	4485410.27	721	495168.77	4490421.34

91	496586.18	4485413.27	722	495164.76	4490424.99
92	496571.81	4485420.52	723	495160.75	4490428.65
93	496556.92	4485428.53	724	495146.73	4490428.49
94	496542.56	4485432.36	725	495144.61	4490428.47
95	496537.25	4485430.85	726	495139.66	4490428.41
96	496526.11	4485422.18	727	495133.73	4490431.79
97	496511.82	4485425.99	728	495130.53	4490433.6
98	496506.51	4485424.48	729	495128.96	4490432.79
99	496500.25	4485419.6	730	495123.39	4490433.79
100	496498.73	4485419.82	731	495119.38	4490436.91
101	496484.91	4485424.96	732	495115.1	4490441.1
102	496467.3	4485437.46	733	495108.97	4490445.26
103	496460.47	4485432.62	734	495102.05	4490449.42
104	496446.95	4485423.72	735	495095.42	4490450.66
105	496436.56	4485431.1	736	495091.31	4490451.44
106	496429.73	4485426.25	737	495078.34	4490468.2
107	496424.39	4485422.73	738	495065.85	4490484.34
108	496417.08	4485428.03	739	495056.19	4490495.34
109	496386.12	4485450.44	740	495046.57	4490503.57
110	496379.57	4485455.93	741	495041.3	4490513.44
111	496371.16	4485462.98	742	495038.41	4490522.93
112	496359.42	4485471.31	743	495037.15	4490529.27
113	496346.08	4485480.69	744	495038.67	4490534.85
114	496327.99	4485488.95	745	495045.28	4490547.23
115	496317.89	4485492.02	746	495050.7	4490559.6
116	496301.98	4485494.48	747	495053.27	4490577.89
117	496274.96	4485496.82	748	495053.58	4490585.44
118	496244.11	4485514.55	749	495048.3	4490595.7
119	496239.61	4485532.95	750	495036.65	4490608.27
120	496229.9	4485549.25	751	495030.26	4490611.38
121	496219.74	4485558.66	752	495028.97	4490620.49
122	496204.83	4485566.43	753	495031.69	4490625.29
123	496192.01	4485576.35	754	495035.98	4490632.09
124	496185.42	4485597.45	755	495039.65	4490637.91
125	496180.52	4485609.04	756	495038.48	4490657.13
126	496171.44	4485616.34	757	495037.99	4490665.06
127	496148.55	4485627.2	758	495037.5	4490673
128	496132.48	4485644.49	759	495039.81	4490679.77
129	496115.79	4485669.18	760	495042.53	4490684.57
130	496092.14	4485700.67	761	495048.39	4490692.97
131	496068.85	4485746.99	762	495053.29	4490699.99
132	496054.53	4485796.06	763	495053	4490706.52
133	496052.55	4485830.98	764	495052.46	4490718.82
134	496057.26	4485882.38	765	495052.14	4490726.2
135	496058.43	4485942.86	766	495041.22	4490729.81
136	496055.68	4486020.32	767	495028.47	4490734.04
137	496051.84	4486100.15	768	495018.14	4490735.11

138	496044.98	4486191.65	769	495010.2	4490735.02
139	496036.3	4486210.08	770	495005.8	4490737.75
140	496018.67	4486224.17	771	495003.75	4490743.68
141	495998.5	4486229.77	772	495005.22	4490753.62
142	495977.84	4486230.59	773	495010.59	4490770.76
143	495962.55	4486225.12	774	495024.64	4490791.96
144	495952.98	4486229.25	775	495024.11	4490803.86
145	495920.91	4486256.41	776	495022.46	4490809
146	495885.05	4486290.94	777	495014.9	4490810.51
147	495858.95	4486304.94	778	495008.55	4490810.04
148	495828.65	4486315.71	779	495001.8	4490809.96
149	495795.66	4486330.69	780	494999.88	4490810.89
150	495766.32	4486351	781	494992.22	4490814.62
151	495748.13	4486368.27	782	494985.78	4490822.09
152	495734.09	4486391.93	783	494982.1	4490831.57
153	495724.35	4486410.88	784	494981.61	4490840.3
154	495706.04	4486438.72	785	494983.9	4490847.87
155	495689.09	4486439.59	786	494984.69	4490849.19
156	495679.07	4486434.51	787	494988.03	4490848.65
157	495676.7	4486430.22	788	494997.16	4490848.75
158	495675.3	4486432.35	789	495005.89	4490848.85
159	495658.35	4486433.22	790	495016.6	4490849.37
160	495648.33	4486428.15	791	495023.32	4490852.62
161	495643.71	4486419.77	792	495026.52	4490854.73
162	495629.88	4486398.03	793	495036.62	4490855.22
163	495613.26	4486369.78	794	495047.34	4490855.74
164	495594.99	4486347.08	795	495054.3	4490856.08
165	495590.53	4486341.63	796	495059.57	4490862.63
166	495587.46	4486343.75	797	495065.05	4490869.44
167	495579.17	4486351.07	798	495068.05	4490873.17
168	495565.83	4486360.97	799	495067.75	4490876.61
169	495550.64	4486369.54	800	495066.84	4490886.93
170	495542.94	4486371.83	801	495066.28	4490888.67
171	495513.32	4486370.17	802	495065.19	4490892.07
172	495497.46	4486367.87	803	495059.19	4490895.57
173	495483.36	4486365.07	804	495052.87	4490892.72
174	495496.96	4486378.15	805	495048.98	4490886.33
175	495507.19	4486381.19	806	495043.09	4490880.31
176	495516.04	4486383.83	807	495038.74	4490878.27
177	495522.68	4486387.08	808	495036.27	4490878.65
178	495530.22	4486393.52	809	495036.1	4490880.56
179	495538.1	4486399.01	810	495034.45	4490885.7
180	495545.87	4486404.42	811	495028.46	4490889.21
181	495558.86	4486415.75	812	495022.14	4490886.35
182	495568.08	4486423.79	813	495020.19	4490883.15
183	495578.57	4486432.59	814	495017.23	4490885.17
184	495587.76	4486443.28	815	495015.4	4490889.76

185	495591.28	4486449.88	816	495022.28	4490894.83
186	495597.74	4486459.05	817	495035.08	4490904.23
187	495606.7	4486471.64	818	495040.45	4490908.19
188	495609.56	4486480.14	819	495043.91	4490913.27
189	495609.26	4486487.97	820	495051.39	4490924.27
190	495615.1	4486496.29	821	495054.13	4490928.3
191	495618.85	4486501.64	822	495052.48	4490945.13
192	495610.78	4486503.44	823	495049.49	4490975.53
193	495600.81	4486505.65	824	495048.61	4490994.05
194	495599.71	4486505.9	825	495046.79	4491008.92
195	495586.99	4486510.57	826	495036.64	4491028.65
196	495573.6	4486515.5	827	495025.18	4491047.71
197	495565.74	4486518.8	828	495018.74	4491061.2
198	495556.59	4486522.29	829	495012.99	4491071.72
199	495550.38	4486528.79	830	495004.24	4491084.86
200	495551.83	4486532.19	831	494998.44	4491100.34
201	495558.09	4486539.46	832	494984.68	4491117.72
202	495565.2	4486546.94	833	494967.91	4491137.71
203	495572.35	4486551.89	834	494959.69	4491162.43
204	495578.66	4486555.35	835	494957.89	4491174.99
205	495585.6	4486558.61	836	494952.48	4491185.18
206	495591.37	4486561.31	837	494941.71	4491190.9
207	495602.2	4486570.01	838	494933.48	4491197.87
208	495613.94	4486579.46	839	494923.46	4491206.36
209	495614.43	4486579.85	840	494905.12	4491213.36
210	495624.36	4486593.55	841	494895.54	4491217.95
211	495635.2	4486608.48	842	494894.08	4491229.85
212	495644.75	4486624.68	843	494894.32	4491234.52
213	495650.54	4486636.6	844	494905.79	4491247.51
214	495653.38	4486648.06	845	494914.93	4491257.87
215	495657.9	4486659.96	846	494922.8	4491264.25
216	495664.16	4486667.65	847	494934.61	4491272.99
217	495669.83	4486674.62	848	494938.17	4491280.3
218	495669.54	4486678.72	849	494937.42	4491287.57
219	495668.53	4486692.68	850	494929.67	4491300.72
220	495668.34	4486710.03	851	494921.9	4491314.2
221	495668.88	4486737.13	852	494913.83	4491325.69
222	495674.69	4486784.61	853	494908.09	4491336.21
223	495677.17	4486827.39	854	494900.74	4491342.74
224	495677.04	4486838.82	855	494891.11	4491345.94
225	495679.35	4486858.74	856	494872.52	4491350.69
226	495681.27	4486876.12	857	494863.19	4491357.2
227	495684.77	4486903.25	858	494860.82	4491363.5
228	495687.06	4486925.29	859	494860.55	4491365.35
229	495690.19	4486948.18	860	494859	4491376.01
230	495693.78	4486967.27	861	494856.85	4491390.88
231	495699.48	4486987.24	862	494858.64	4491407.77

232	495705.73	4486996.2	863	494858.91	4491410.03
233	495707.26	4487010.61	864	494860.87	4491412.03
234	495708.79	4487025.02	865	494864.48	4491418.33
235	495708.19	4487040.25	866	494869.08	4491418.2
236	495708.9	4487052.96	867	494879.12	4491410.98
237	495711.71	4487066.11	868	494886.94	4491405.36
238	495716.66	4487077.6	869	494898.09	4491429.72
239	495725.34	4487095.9	870	494906.17	4491447.35
240	495728.58	4487109.48	871	494907.27	4491449.76
241	495728.46	4487119.22	872	494907.35	4491459.61
242	495724.53	4487130.6	873	494907.49	4491476.48
243	495721.43	4487141.99	874	494906.34	4491490.03
244	495720.45	4487154.26	875	494903.93	4491498.61
245	495721.16	4487165.7	876	494900.58	4491501.88
246	495724.86	4487175.9	877	494893.99	4491500.9
247	495727.51	4487183.21	878	494881.7	4491504.31
248	495723.82	4487192.82	879	494869.09	4491507.81
249	495715.1	4487215.58	880	494859.11	4491512
250	495700.88	4487237.01	881	494851.7	4491516.97
251	495680.18	4487270.64	882	494845.35	4491529.04
252	495657.56	4487287.31	883	494847.09	4491540.2
253	495646.09	4487290.99	884	494856.11	4491539.69
254	495637.89	4487304.45	885	494863.03	4491542.08
255	495636.84	4487322.64	886	494869.68	4491547.03
256	495638.84	4487332.4	887	494872.28	4491546.88
257	495647.16	4487346.04	888	494886.85	4491546.06
258	495654.25	4487355.01	889	494893.77	4491548.45
259	495659.02	4487372.02	890	494900.99	4491553.83
260	495664.03	4487388.14	891	494905.89	4491558.85
261	495668.53	4487402.58	892	494912.48	4491565.58
262	495667.14	4487413.15	893	494907.27	4491583.67
263	495665.32	4487424.13	894	494904.51	4491593.24
264	495658.04	4487431.25	895	494900.45	4491601.13
265	495645.26	4487438.72	896	494893.42	4491608.33
266	495632.04	4487447.04	897	494888.73	4491613.57
267	495628.99	4487454.62	898	494883.74	4491619.15
268	495628.9	4487462.24	899	494881.67	4491623.42
269	495624.63	4487466	900	494879.27	4491631
270	495613.92	4487476.89	901	494873.55	4491639.54
271	495596.84	4487490.24	902	494864.82	4491650.36
272	495570.82	4487507.3	903	494861.12	4491655.94
273	495544.68	4487535.37	904	494861.01	4491665.86
274	495504.44	4487574.7	905	494861.59	4491673.15
275	495500.05	4487581.6	906	494864.5	4491678.47
276	495495.06	4487589.43	907	494871.07	4491683.18
277	495514.24	4487603.35	908	494881.58	4491689.92
278	495530.9	4487601.58	909	494889.46	4491694.97

279	495537.63	4487605.89	910	494889.4	4491699.93
280	495541.17	4487610.12	911	494889.32	4491707.54
281	495561.64	4487607.95	912	494889.18	4491719.64
282	495568.36	4487612.26	913	494880.73	4491721.95
283	495573.11	4487617.92	914	494873.58	4491723.9
284	495573.37	4487618.24	915	494864.29	4491726.45
285	495578.43	4487620.41	916	494859.37	4491727.79
286	495587.69	4487624.75	917	494853.76	4491721.69
287	495594.39	4487631.6	918	494848.53	4491716.01
288	495604.6	4487635.82	919	494847.45	4491714.91
289	495605.44	4487635.87	920	494842.85	4491717.53
290	495619	4487634.75	921	494833.55	4491720.08
291	495635.52	4487633.67	922	494826.95	4491718.68
292	495646.04	4487639.71	923	494823.02	4491715.32
293	495647.3	4487641.28	924	494818.2	4491710.08
294	495649.74	4487641.12	925	494817.13	4491714.26
295	495666.26	4487640.04	926	494816.02	4491723.58
296	495674.82	4487639.48	927	494814.55	4491735.81
297	495682.62	4487653.34	928	494815.45	4491744.42
298	495688.84	4487664.42	929	494817.99	4491753.38
299	495685.03	4487664.38	930	494820.63	4491758.81
300	495693.59	4487672.88	931	494829.79	4491760.4
301	495696.64	4487675.91	932	494834.73	4491761.78
302	495699.26	4487678.51	933	494835.77	4491762.49
303	495713.52	4487690.52	934	494840.05	4491763.23
304	495730.33	4487701.3	935	494860.52	4491766.77
305	495735.45	4487704.01	936	494872.35	4491768.81
306	495742.67	4487704.31	937	494882.19	4491781.57
307	495760.31	4487710.14	938	494887.08	4491787.91
308	495773.4	4487710.68	939	494894.6	4491795.61
309	495791.96	4487716.81	940	494899.34	4491800.45
310	495800.14	4487719.52	941	494902.36	4491811.91
311	495815.43	4487737.4	942	494904.16	4491818.73
312	495824.2	4487747.66	943	494911.67	4491836.83
313	495834.67	4487757.94	944	494914.57	4491843.81
314	495846.89	4487763.15	945	494918.14	4491849.8
315	495859.1	4487768.37	946	494922.04	4491855.8
316	495867.92	4487775.25	947	494924.62	4491862.12
317	495874.8	4487780.62	948	494928.86	4491867.46
318	495876.71	4487783.39	949	494930.79	4491871.78
319	495881.71	4487790.64	950	494928.42	4491877.05
320	495886.32	4487797.33	951	494926.41	4491879.34
321	495887.41	4487811.02	952	494923.72	4491882.95
322	495888.15	4487820.35	953	494922.36	4491885.85
323	495893.13	4487828.45	954	494922.31	4491890.87
324	495898.18	4487831.04	955	494922.69	4491896.77
325	495904.1	4487831.96	956	494932.36	4491908.52

326	495911.02	4487842.11	957	494937.58	4491914.87
327	495917.55	4487854.56	958	494942.48	4491920.55
328	495923.13	4487866.37	959	494945.2	4491923.7
329	495930.33	4487875.03	960	494942.66	4491934.12
330	495936.6	4487882.4	961	494937.11	4491956.88
331	495941.18	4487887.78	962	494936.34	4491966.47
332	495935.79	4487898.27	963	494937.55	4491976.41
333	495930.92	4487907.73	964	494939.77	4491984.37
334	495929.5	4487920.74	965	494945.63	4491993.37
335	495923.37	4487929.24	966	494952.52	4491998.41
336	495920.08	4487939.04	967	494957.22	4492001.85
337	495911.74	4487946.57	968	494961.44	4492011.66
338	495916.05	4487959	969	494971.7	4492027.75
339	495920.53	4487966	970	494982.76	4492045.08
340	495933.66	4487973.8	971	495006.39	4492075.37
341	495939.65	4487977.36	972	495014.85	4492092
342	495946.63	4487981.51	973	495017.44	4492108
343	495952.16	4487994.33	974	495017.93	4492123.22
344	495955.01	4488000.95	975	495018.08	4492127.7
345	495962.49	4488007.15	976	495013.11	4492139.71
346	495969.09	4488012.62	977	495010.39	4492146.63
347	495979.82	4488021.51	978	495010.29	4492154.9
348	495966.4	4488016.93	979	495012.2	4492161.87
349	495957.92	4488017.89	980	495015.74	4492170.18
350	495952.84	4488018.47	981	495022.93	4492178.53
351	495947.48	4488015.23	982	495030.46	4492185.24
352	495941.2	4488008.34	983	495039.62	4492194.6
353	495935.33	4488013.3	984	495050.44	4492203
354	495926.83	4488016.38	985	495065.55	4492212.76
355	495924.68	4488019.26	986	495095.62	4492245.2
356	495914.55	4488025.5	987	495102.74	4492259.17
357	495908.47	4488025.43	988	495113.4	4492282.12
358	495902.36	4488027.47	989	495120.24	4492291.14
359	495899.93	4488031.68	990	495118.5	4492299.39
360	495894.89	4488032.68	991	495116.41	4492308.63
361	495890.94	4488030.78	992	495115.95	4492319.54
362	495883.25	4488033.08	993	495115.42	4492337.4
363	495879.27	4488033.56	994	495113.6	4492351.61
364	495871.34	4488033.47	995	495111.41	4492369.78
365	495866.86	4488031.57	996	495106.49	4492394.87
366	495860.38	4488032.22	997	495105.26	4492416.36
367	495855.69	4488037	998	495104.71	4492435.21
368	495849.53	4488043.28	999	495103.27	4492445.78
369	495842.78	4488050.16	1000	495101.8	4492458.67
370	495824.29	4488052.52	1001	495100.67	4492470.9
371	495814.75	4488053.73	1002	495100.55	4492481.15
372	495806.03	4488053.1	1003	495102.7	4492495.73

373	495796.66	4488051.12	1004	495107.4	4492519.28
374	495772.43	4488052.46	1005	495111.21	4492533.22
375	495764.49	4488052.9	1006	495115.04	4492545.83
376	495754.68	4488054.64	1007	495116.58	4492555.44
377	495745.92	4488057.98	1008	495118.77	4492567.05
378	495735.08	4488057.06	1009	495121.94	4492579.33
379	495725.82	4488057.22	1010	495124.07	4492595.56
380	495716.54	4488058.97	1011	495126.24	4492608.16
381	495708.05	4488060.72	1012	495127.05	4492612.84
382	495698.8	4488060.09	1013	495125.65	4492631.31
383	495686.73	4488060.64	1014	495124.87	4492641.56
384	495652.23	4488079.3	1015	495124.61	4492664.05
385	495669.4	4488095.58	1016	495128.06	4492681.3
386	495653.56	4488111.06	1017	495132.91	4492690.62
387	495636.41	4488130.34	1018	495139.1	4492698.96
388	495614.65	4488145.33	1019	495148.28	4492707
389	495602.68	4488155.36	1020	495156.49	4492712.06
390	495595.78	4488166.71	1021	495175.47	4492730.8
391	495595.67	4488176.44	1022	495190.55	4492743.21
392	495601.53	4488182.01	1023	495199.4	4492749.93
393	495610.35	4488188.46	1024	495204.65	4492753.63
394	495615.25	4488204.18	1025	495213.83	4492761.01
395	495621.91	4488214.42	1026	495223.35	4492767.74
396	495630.23	4488226.79	1027	495234.16	4492777.46
397	495635.54	4488243.78	1028	495239.03	4492785.45
398	495641.28	4488260.78	1029	495238.98	4492790.08
399	495647.93	4488271.86	1030	495235.93	4492796.67
400	495656.68	4488283.81	1031	495231.24	4492801.57
401	495662.1	4488291.07	1032	495225.24	4492805.15
402	495674.15	4488310.68	1033	495220.56	4492810.06
403	495678.3	4488318.34	1034	495217.52	4492814.98
404	495677.79	4488325.96	1035	495218.12	4492820.62
405	495677.54	4488329.67	1036	495221.05	4492825.28
406	495657.06	4488324.88	1037	495225.97	4492828.64
407	495649.46	4488323.1	1038	495232.56	4492830.7
408	495641.85	4488322.16	1039	495240.61	4492833.22
409	495630.86	4488321.19	1040	495233.3	4492853.21
410	495621.54	4488321.09	1041	495227.15	4492870.01
411	495608.42	4488321.36	1042	495225.73	4492879.26
412	495604.17	4488322.58	1043	495223.31	4492888.17
413	495593.13	4488325.84	1044	495220.26	4492894.42
414	495582.06	4488331.65	1045	495218.52	4492902.34
415	495574.37	4488337.91	1046	495217.45	4492908.94
416	495568.83	4488340.81	1047	495218.31	4492920.53
417	495559.44	4488347.47	1048	495220.55	4492927.51
418	495553.47	4488351.64	1049	495224.8	4492931.86
419	495544.13	4488354.07	1050	495230.37	4492936.55

420	495540.28	4488356.91	1051	495235.95	4492940.25
421	495534.73	4488361.08	1052	495243.82	4492945.47
422	495529.86	4488361.24	1053	495239.41	4492956.51
423	495521.39	4488361.56	1054	495235.32	4492966.72
424	495510.12	4488366.73	1055	495233.53	4492978.28
425	495501.8	4488372.14	1056	495235.42	4492986.9
426	495494.56	4488376.5	1057	495237.83	4492993.7
427	495484.97	4488381.89	1058	495243.49	4493004.86
428	495475.16	4488388.34	1059	495247.37	4493012.51
429	495467.47	4488394.18	1060	495250.94	4493019.17
430	495461.51	4488397.29	1061	495254.15	4493027.48
431	495451.71	4488398.55	1062	495256.37	4493036.1
432	495449.43	4488398.85	1063	495255.28	4493044.36
433	495437.28	4488400.41	1064	495254.53	4493052.29
434	495427.49	4488391.34	1065	495253.47	4493063.47
435	495418.7	4488392.48	1066	495247.49	4493089.93
436	495410.26	4488389.42	1067	495245.97	4493119.73
437	495407.53	4488387.48	1068	495243.79	4493123.97
438	495401.41	4488386.14	1069	495241.42	4493128.57
439	495397.19	4488384.82	1070	495240.98	4493138.49
440	495391.95	4488380.53	1071	495244.2	4493146.14
441	495387.87	4488376.75	1072	495248.76	4493152.81
442	495386.23	4488377.7	1073	495256.92	4493162.49
443	495375.3	4488384.46	1074	495265.44	4493169.87
444	495366.56	4488389.86	1075	495270.35	4493174.12
445	495360.38	4488394.02	1076	495270.22	4493185.8
446	495353.23	4488400.6	1077	495270.45	4493191.88
447	495342.2	4488410.75	1078	495272.41	4493197.08
448	495331.36	4488414.86	1079	495275	4493202.07
449	495323.21	4488424.08	1080	495278.24	4493207.73
450	495321.22	4488431.26	1081	495284.11	4493215.41
451	495319.82	4488442.67	1082	495288.35	4493220.42
452	495317.43	4488448.15	1083	495292.25	4493227.08
453	495313.7	4488459.74	1084	495299.37	4493241.06
454	495307.04	4488468.35	1085	495303.83	4493256
455	495300.66	4488471.03	1086	495308.59	4493273.92
456	495291.44	4488481.5	1087	495310.77	4493285.52
457	495288.61	4488488.67	1088	495313.34	4493292.5
458	495287.03	4488497.75	1089	495315.08	4493296.3
459	495286.95	4488504.52	1090	495321.81	4493304.17
460	495284.77	4488510.21	1091	495326.38	4493309.52
461	495280.04	4488516.3	1092	495329.98	4493312.87
462	495278.7	4488519.05	1093	495331.14	4493314.79
463	495278.28	4488521.99	1094	495340.72	4493328.54
464	495277.59	4488526.85	1095	495345.61	4493335.54
465	495275.88	4488528.74	1096	495351.8	4493344.22
466	495272.49	4488529.12	1097	495355.98	4493354.19

467	495266.75	4488531.18	1098	495358.9	4493361.14
468	495266.48	4488536.04	1099	495358.45	4493369.77
469	495266.42	4488541.75	1100	495357.61	4493385.97
470	495263.81	4488551.09	1101	495357.88	4493391.27
471	495260.02	4488558.46	1102	495358.16	4493395.24
472	495257.02	4488566.62	1103	495361.41	4493400.57
473	495257.98	4488572.3	1104	495364.69	4493403.58
474	495262.98	4488577.8	1105	495367.03	4493405.74
475	495269.77	4488585.29	1106	495368.9	4493411.24
476	495273.92	4488592.74	1107	495371.34	4493417.82
477	495278.3	4488602.58	1108	495375.69	4493425.55
478	495279.26	4488611.59	1109	495379.26	4493431.21
479	495280.74	4488620.87	1110	495383.95	4493438.64
480	495282.48	4488631.2	1111	495382.78	4493470.62
481	495285.8	4488641.3	1112	495382.3	4493483.85
482	495289.08	4488655.35	1113	495383.12	4493499.08
483	495293.93	4488671.28	1114	495383.36	4493507.02
484	495303.02	4488685.94	1115	495383.93	4493515.63
485	495306.64	4488693.92	1116	495384.52	4493521.92
486	495311.79	4488705.88	1117	495386.19	4493529.2
487	495315.65	4488715.19	1118	495389.6	4493540.51
488	495319.51	4488725.28	1119	495393.11	4493552.13
489	495323.38	4488733.79	1120	495394.66	4493561.41
490	495326.71	4488743.09	1121	495397.17	4493572.69
491	495330.58	4488752.13	1122	495396.34	4493582.33
492	495334.72	4488760.64	1123	495393.66	4493590.51
493	495341.44	4488774.21	1124	495395.26	4493595.16
494	495345.82	4488785.11	1125	495399.13	4493604.47
495	495351.28	4488793.37	1126	495410.27	4493613.32
496	495357.27	4488801.38	1127	495415.03	4493611.01
497	495363.81	4488808.33	1128	495427.27	4493605.32
498	495369.32	4488814.19	1129	495435.81	4493599.07
499	495373.23	4488817.43	1130	495446.43	4493596.01
500	495379.27	4488821.47	1131	495453.4	4493588.68
501	495381.22	4488822.77	1132	495458.74	4493583.97
502	495389.47	4488831.64	1133	495466.23	4493577.71
503	495394.7	4488837.26	1134	495475.3	4493570.93
504	495399.75	4488840.86	1135	495482.8	4493563.07
505	495407.05	4488845.07	1136	495495.61	4493554.22
506	495415.46	4488849.93	1137	495510.46	4493551.21
507	495427.58	4488854.03	1138	495521.58	4493551.34
508	495435.74	4488857.83	1139	495527.93	4493551.94
509	495448.18	4488863.62	1140	495535.31	4493554.14
510	495451.24	4488867.53	1141	495535.4	4493554.33
511	495456.46	4488874.2	1142	495538.38	4493552.27
512	495462.75	4488879.3	1143	495546.92	4493554.81
513	495469.6	4488881.5	1144	495558.66	4493558.31

514	495483.26	4488885.87	1145	495567.37	4493559.13
515	495490.57	4488898.67	1146	495573.83	4493574.36
516	495494.98	4488906.39	1147	495577.44	4493582.87
517	495497.47	4488910.74	1148	495589.53	4493590.42
518	495498.8	4488919.93	1149	495598.47	4493595.29
519	495499.76	4488926.6	1150	495602.69	4493596.92
520	495502.31	4488936.9	1151	495609.53	4493600.71
521	495505.85	4488951.23	1152	495616.37	4493603.96
522	495504.37	4488965.23	1153	495624.26	4493608.81
523	495505.55	4488977.68	1154	495631.07	4493615.78
524	495504.15	4488984.81	1155	495641.04	4493613.57
525	495501.41	4488992.45	1156	495653.21	4493613.71
526	495500.54	4488999.58	1157	495666.4	4493618.09
527	495500.46	4489006.72	1158	495670.76	4493620.17
528	495501.13	4489017.58	1159	495671.77	4493619.94
529	495502.1	4489025	1160	495683.95	4493620.08
530	495503.02	4489030.05	1161	495697.13	4493624.46
531	495505.34	4489042.76	1162	495710.82	4493630.97
532	495508.86	4489059.21	1163	495724.53	4493635.89
533	495510.05	4489070.86	1164	495740.72	4493655.13
534	495510.97	4489082.78	1165	495743.67	4493658.4
535	495511.34	4489087.58	1166	495748	4493657.66
536	495509.96	4489101.81	1167	495767.08	4493655.76
537	495509.06	4489111.06	1168	495806.36	4493646.15
538	495505.53	4489119.75	1169	495823.31	4493645.29
539	495500.41	4489127.9	1170	495844.98	4493648.18
540	495494.78	4489134.45	1171	495856.37	4493651.96
541	495488.62	4489140.99	1172	495875.71	4493654.55
542	495482.48	4489145.95	1173	495888.9	4493658.93
543	495473.67	4489152.46	1174	495898.88	4493665.93
544	495470.41	4489159.57	1175	495911.9	4493684.6
545	495469.77	4489163.61	1176	495919.67	4493699.51
546	495469.97	4489175.71	1177	495922.68	4493714.37
547	495470.12	4489185.23	1178	495925.61	4493735.58
548	495470.83	4489192.91	1179	495929.13	4493752.56
549	495473.88	4489203.53	1180	495933.15	4493771.13
550	495474.59	4489211.21	1181	495938.26	4493787.6
551	495477.71	4489216.54	1182	495941.78	4493803.52
552	495487.42	4489223.26	1183	495941.64	4493816.22
553	495492.05	4489234.43	1184	495940.99	4493826.27
554	495509.6	4489250.24	1185	495938.79	4493833.66
555	495521.51	4489262	1186	495934.43	4493845.26
556	495532.36	4489272.72	1187	495929.02	4493854.72
557	495541.97	4489281.25	1188	495923.61	4493865.78
558	495548.28	4489281.69	1189	495918.69	4493878.96
559	495555.67	4489283.89	1190	495918.07	4493887.42
560	495561.1	4489288.12	1191	495919.03	4493895.9

561	495562.09	4489288.14	1192	495922.61	4493906.53
562	495570.03	4489287.43	1193	495926.78	4493912.93
563	495579.02	4489288.06	1194	495936.77	4493918.33
564	495586.4	4489290.26	1195	495946.78	4493922.68
565	495590.63	4489293.55	1196	495959.96	4493927.6
566	495592.96	4489295.36	1197	495973.13	4493933.57
567	495596.85	4489302.29	1198	495987.34	4493940.08
568	495596.25	4489308.37	1199	495998.36	4493948.68
569	495596.71	4489314.72	1200	496003.02	4493958.26
570	495600.08	4489320.32	1201	496005.01	4493969.4
571	495606.37	4489325.68	1202	496004.82	4493986.34
572	495613.19	4489331.49	1203	496007.84	4494000.13
573	495613.11	4489338.45	1204	496021.42	4494016.17
574	495613.7	4489355.92	1205	496041.96	4494024.87
575	495613.9	4489361.75	1206	496058.81	4494033.53
576	495615.41	4489368.91	1207	496071.41	4494042.15
577	495616.67	4489374.21	1208	496082.37	4494056.56
578	495618.73	4489379.53	1209	496083.08	4494057.5
579	495615.68	4489391.13	1210	496300.86	4493203.52
580	495616.1	4489400.93	1211	496431.19	4493129.17
581	495619.71	4489409.17	1212	496724.67	4492520.75
582	495614.58	4489418.64	1213	496962.07	4492405.71
583	495613.73	4489423.39	1214	496948.84	4493036.09
584	495616.53	4489432.95	1215	497245.15	4493103.11
585	495621.21	4489440.67	1216	497508.2	4492706.74
586	495625.89	4489447.87	1217	497861.6	4492716.1
587	495629.1	4489452.8	1218	498076.6	4491225.6
588	495626.23	4489464.01	1219	498045.21	4491238.98
589	495623.74	4489473.77	1220	497679.33	4491338.16
590	495623.4	4489480.65	1221	497052.13	4491657.48
591	495624.89	4489489.39	1222	496529.2	4491626.08
592	495627.7	4489498.16	1223	496549.45	4491914.2
593	495630.51	4489506.66	1224	495909.48	4492127.58
594	495631.78	4489510.48	1225	496031.72	4492449.8
595	495630.17	4489513.27	1226	495583.44	4492427.48
596	495625.31	4489521.68	1227	495493.7	4491792.45
597	495622.59	4489528.79	1228	495359.66	4491590.11
598	495616.38	4489539.83	1229	495278.9	4491542.13
599	495611.81	4489545.86	1230	495457.09	4491479.5
600	495606.38	4489557.97	1231	495789	4491579.33
601	495606.82	4489565.65	1232	496443.99	4491032.15
602	495608.79	4489578.64	1233	496484.15	4490234.88
603	495609.46	4489590.29	1234	497966.25	4490505.08
604	495612.76	4489601.97	1235	497757.06	4489930.23
605	495611.96	4489625.77	1236	497623.58	4489563.45
606	495611.48	4489644.81	1237	497607.43	4489519.07
607	495605.54	4489655.86	1238	497755.44	4489156.87

608	495600.81	4489664.63	1239	497912.79	4488680.89
609	495589.29	4489665.46	1240	497565.58	4488422.11
610	495579.76	4489666.15	1241	497542.83	4488405.15
611	495574.18	4489667.23	1242	497411.36	4487995
612	495558.49	4489675.16	1243	497210.11	4487367.17
613	495551.84	4489678.53	1244	497008.58	4486948.49
614	495546.76	4489682.44	1245	496874.99	4486670.94
615	495536.89	4489690.05	1246	496817.77	4486552.07
616	495531.17	4489687.8	1247	497087.7	4486083.98
617	495530.95	4489687.85	1248	497680.71	4486109.72
618	495513.43	4489682.33	1249	498162.92	4487165.4
619	495506.05	4489680	1250	498556.14	4487515.22
620	495506.02	4489679.99	1251	498754.1	4487425.45
621	495502.74	4489681.21	1252	499391.56	4486708.29
622	495497.73	4489680.36	1253	499057.51	4486012.02
623	495492.19	4489678.18	1254	499049.28	4485994.87
624	495482.69	4489675.96	1255	499038.22	4485971.82
625	495476.35	4489673.96	1256	499029.39	4485969.23
626	495468.82	4489673.62	1257	499017.36	4485968.34
627	495460.88	4489673.26	1258	498882.55	4485928.83
628	495453.71	4489675.83	1259	498838.34	4485906.1
629	495452.09	4489678.46	1260	498782.17	4485889.25
630	495450.45	4489683.2	1261	498761.32	4485882.99
631	495448.05	4489684.76			