

VENDIM
Nr. 272, datë 10.4.2026

**PËR SHPALLJEN E DISA ZONAVE ME PËRPARËSI ZHVILLIMIN E
EKONOMISË MALORE NË BASHKINË KËLCYRË**

Në mbështetje të nenit 100 të Kushtetutës dhe të pikës 1, të nenit 4, të ligjit nr. 20/2025, “Për paketën e maleve”, me propozimin e ministrit të Shtetit për Pushtetin Vendor, Këshilli i Ministrave

VENDOSI:

1. Shpalljen “zonë me përparësi zhvillimin e ekonomisë malore” në territorin e Bashkisë Këlcyrë të zonave, si më poshtë vijon:

a) Zona nr. 1, fshatrat Ballaban, Psar, Mazhar, Komarak, Beqaraj, Vinokash, Vinokash Fushë, Kajcë, Pavar, Ball, Kondas, Bubës 1, Bubës 2 dhe Toshkëz, pjesë e Njesisë Administrative Ballaban, Bashkia Këlcyrë, qarku Gjirokastër, me sipërfaqe 6397 (gjashtë mijë e treqind e nëntëdhjetë e shtatë) ha, sipas hartës në sistemin KRGJSH;

b) Zona nr. 2, fshatrat Sukë, Rodenjë, Zhepovë, Topojan, Goricë, Taroninë, Shelq, Fshat i Ri, Delilaj, Luar, Pavar dhe Ballaban, pjesë e njësive administrative Sukë dhe Ballaban, Bashkia Këlcyrë, qarku Gjirokastër, me sipërfaqe 4089 (katër mijë e tetëdhjetë e nëntë) ha, sipas hartës në sistemin KRGJSH;

c) Zona nr. 3, fshatrat Çorogunj, Ujmirë, Podgoran, Podgoran Fushë, Ball dhe Psar, pjesë e njësive administrative Sukë dhe Ballaban, Bashkia Këlcyrë, qarku Gjirokastër, me sipërfaqe 1836 (një mijë e tetëqind e tridhjetë e gjashtë) ha, sipas hartës në sistemin KRGJSH;

ç) Zona nr. 4, fshatrat Katundishtë, Kodrishtë, Fshat Këlcyrë, Podgoran dhe Podgoran Fushë, pjesë e njësive administrative Dëshnicë, Këlcyrë dhe Sukë, Bashkia Këlcyrë, qarku Gjirokastër, me sipërfaqe 2561 (dy mijë e pesëqind e gjashtëdhjetë e një) ha, sipas hartës në sistemin KRGJSH;

d) Zona nr. 5, fshatrat Mërtinjë, Xhanaj, Senican, Fratar, Riban, Kuqar, Varibop, Beduqas, Tolar, Leskovec, Bënjë, Panarit, Gërdas, Goricë, Topojan, Luar dhe Fshat Këlcyrë, pjesë e njësive administrative Dëshnicë, Sukë dhe Këlcyrë, Bashkia Këlcyrë, qarku Gjirokastër, me sipërfaqe 6592 (gjashtë mijë e pesëqind e nëntëdhjetë e dy) ha, sipas hartës në sistemin KRGJSH;

dh) Zona nr. 6, fshati Mbrezhdan, pjesë e Njesisë Administrative Këlcyrë, Bashkia Këlcyrë, qarku Gjirokastër, me sipërfaqe 671 (gjashtëqind e shtatëdhjetë e një) ha, sipas hartës në sistemin KRGJSH;

e) Zona nr. 7, fshatrat Mbrezhdan, Malëshovë, Limar dhe Leskaj, pjesë e Njesisë Administrative Këlcyrë, Bashkia Këlcyrë, qarku Gjirokastër, me sipërfaqe 2515 (dy mijë e pesëqind e pesëmbëdhjetë) ha, sipas hartës në sistemin KRGJSH;

ë) Zona nr. 8, fshati Fshat Këlcyrë, pjesë e Njesisë Administrative Këlcyrë, Bashkia Këlcyrë, qarku Gjirokastër, me sipërfaqe 32 (tridhjetë e dy) ha, sipas hartës në sistemin KRGJSH.

2. Shtirirja, kufijtë dhe pikat e hyrjes e të daljes së këtyre zonave përcaktohen në hartën treguese, sipas sistemit KRGJSH, që i bashkëlidhet këtij vendimi.

3. Llojet e aktiviteteve, që do të zhvillohen në këtë zonë, janë:

a) të zhvillimit ekonomik;

b) të zhvillimit industrial;

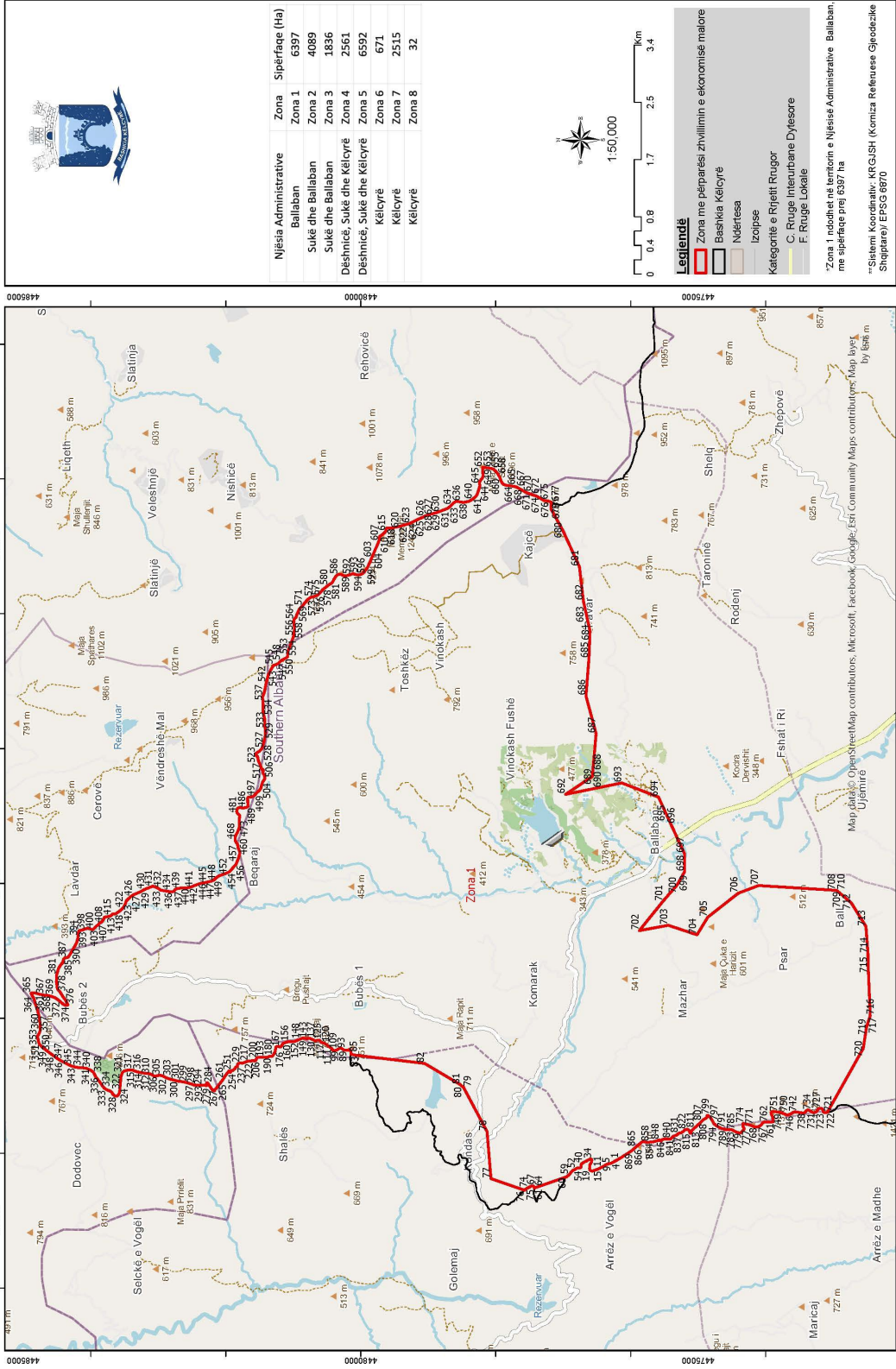
c) të zhvillimit turistik.

4. Ngarkohen Ministria e Ekonomisë dhe Inovacionit, Agjencia Shtetërore e Kadastrës dhe Bashkia Këlcyrë për zbatimin e këtij vendimi.

Ky vendim hyn në fuqi pas botimit në Fletoren Zyrtare.

KRYEMINISTËR
Edi Rama

ZONA ME PËRPARËSI ZHVILLIMIN E EKONOMISË MALORE
ZONA 1, NJËSIA ADMINISTRATIVE BALLABAN, BASHKIA KËLCYRË, QARKU GJIROKASTËR



Zona 1								
Njësia Administrative Ballaban								
Nr.	Koordinata X	Koordinata Y	Nr.	Koordinata X	Koordinata Y	Nr.	Koordinata X	Koordinata Y
1	505909.9	4476178.8	292	507005.71	4482304.48	583	514513.61	4480396.62
2	505893.7	4476207.2	293	507006.98	4482342.3	584	514533.88	4480383.08
3	505871.78	4476250.23	294	507005.44	4482384.63	585	514565.89	4480361.21
4	505853.54	4476282.98	295	507006.06	4482423.81	586	514583.1	4480337.06
5	505844.55	4476305.51	296	507006.87	4482432.95	587	514587.55	4480318.05
6	505840.26	4476333.65	297	507010.75	4482476.8	588	514583.64	4480289.42
7	505834.9	4476351.45	298	507022.12	4482501.28	589	514570.15	4480264.91
8	505832.25	4476356.6	299	507054.72	4482613.88	590	514566.16	4480243.69
9	505826.37	4476368.03	300	507066.37	4482707.18	591	514567.65	4480205.59
10	505810.63	4476390.48	301	507093.75	4482813.36	592	514583.11	4480149.65
11	505792.32	4476429.98	302	507116.26	4482882.44	593	514597.24	4480116.99
12	505776.55	4476455.21	303	507144.26	4482934.63	594	514582.85	4480078.71
13	505760.65	4476491.95	304	507151.38	4482960.12	595	514575.87	4480040.52
14	505758.34	4476497.38	305	507154.19	4482992.98	596	514582.67	4480001.42
15	505745.15	4476528.31	306	507148.62	4483017.26	597	514596.74	4479974.05
16	505733.24	4476563.51	307	507139.88	4483040.46	598	514638.46	4479936.41
17	505732.71	4476575.41	308	507135.49	4483054.17	599	514675.86	4479906.13
18	505738.88	4476591.36	309	507154.28	4483077.68	600	514705.67	4479891.65
19	505745.13	4476600.56	310	507173.93	4483119.19	601	514738.67	4479876.14
20	505753.38	4476607.8	311	507182.02	4483153.16	602	514784.43	4479855.48
21	505765.66	4476608.91	312	507181.61	4483189.15	603	514830.15	4479838
22	505773.61	4476609.62	313	507195.56	4483265.54	604	514911.01	4479802.92
23	505789.14	4476605.83	314	507203.54	4483309.04	605	514962.07	4479782.32
24	505793.51	4476605.45	315	507217.91	4483349.44	606	515002.52	4479762.66
25	505801.46	4476604.78	316	507230.24	4483382.4	607	515081.23	4479730.73
26	505805.11	4476605.32	317	507233.03	4483416.31	608	515099.29	4479725.64
27	505815.73	4476606.92	318	507229.4	4483456.5	609	515131.07	4479723.89
28	505828.08	4476602.7	319	507220.53	4483491.34	610	515145.94	4479719.82
29	505844.87	4476592.96	320	507210.69	4483518.75	611	515157.74	4479706.19
30	505868.44	4476580.12	321	507189.33	4483535.45	612	515179.27	4479674.67
31	505891.1	4476577.2	322	507124.53	4483554.83	613	515194.3	4479656.84
32	505908.52	4476581.37	323	507058.83	4483559.38	614	515210.37	4479640.08
33	505912.4	4476589.36	324	506972.96	4483569	615	515227.45	4479627.57
34	505912.3	4476598.88	325	506927.43	4483569.54	616	515252.9	4479624.68
35	505908.61	4476609.16	326	506881.77	4483581.73	617	515266.72	4479619.55
36	505900.07	4476626.54	327	506859.38	4483595.24	618	515273.2	4479607.97
37	505890	4476639.13	328	506843.25	4483617.29	619	515276.57	4479591.07
38	505880.64	4476659.67	329	506848.24	4483643.81	620	515270.58	4479559.24
39	505868.84	4476684.94	330	506873.3	4483674.8	621	515277.3	4479526.49
40	505853.86	4476710.58	331	506908.02	4483694.25	622	515300.83	4479412.41
41	505841.77	4476726.33	332	506921.48	4483720.87	623	515331.75	4479299.48
42	505833.38	4476731	333	506942.1	4483769.81	624	515352.43	4479249.95
43	505821.03	4476734.83	334	506967.14	4483802.91	625	515397.92	4479159.41
44	505798.39	4476735.76	335	507005.97	4483833	626	515441.38	4479061.44
45	505786.42	4476740.39	336	507062.68	4483873.87	627	515459.79	4479025.65
46	505782.37	4476748.28	337	507130.9	4483926.53	628	515476.14	4478983.48
47	505779.83	4476761.75	338	507199.32	4483962.24	629	515488.45	4478925.39
48	505778.15	4476769.68	339	507223.3	4483994.27	630	515499.55	4478879.99
49	505778.86	4476777.63	340	507258.47	4484067.73	631	515525.72	4478812.52
50	505778.73	4476788.74	341	507262.35	4484098.47	632	515564.99	4478711.33
51	505772.24	4476800.97	342	507266	4484150.39	633	515587.56	4478680.88

52	505764.54	4476814.39	343	507273.61	4484226.71	634	515612.22	4478653.63
53	505755.64	4476828.98	344	507283.83	4484258.59	635	515640	4478631.71
54	505748.71	4476845.18	345	507300.22	4484307.48	636	515662.59	4478600.2
55	505740.2	4476860.17	346	507354.07	4484413.96	637	515665.1	4478565.29
56	505732.14	4476871.19	347	507385.21	4484468.31	638	515651.27	4478478.32
57	505720.55	4476878.21	348	507438.34	4484545.14	639	515669.16	4478393.82
58	505697.72	4476895.82	349	507518.65	4484651.93	640	515700.45	4478342.29
59	505674.42	4476919.37	350	507585.48	4484734.21	641	515732.67	4478302.42
60	505646.83	4476950.97	351	507614.64	4484760.59	642	515767.89	4478277.41
61	505480.43	4477429.96	352	507647.5	4484773.03	643	515862.48	4478245.66
62	505485.62	4477429.01	353	507703.47	4484786.37	644	515907.1	4478232.4
63	505497.53	4477429.54	354	507715.89	4484790.11	645	515929.23	4478241.12
64	505504.11	4477432.53	355	507728.31	4484793.86	646	515957.85	4478238.27
65	505505.66	4477436.25	356	507749.47	4484780.9	647	515988.75	4478220.62
66	505509.58	4477440.26	357	507788.89	4484759.12	648	516012.28	4478199.71
67	505513.49	4477445.87	358	507828.19	4484747.92	649	516052.68	4478185.35
68	505513.95	4477452.22	359	507892.77	4484748.65	650	516085.44	4478191.01
69	505513.3	4477462.27	360	508002.75	4484760.48	651	516128.84	4478191.5
70	505510.24	4477475.47	361	508094.59	4484783.76	652	516174.36	4478192.02
71	505500.79	4477492.31	362	508212.75	4484821.09	653	516169.5	4478153.85
72	505496.18	4477502.05	363	508287.78	4484839.66	654	516163.62	4478112.49
73	505488.35	4477515.19	364	508329.76	4484865.83	655	516157.67	4478076.42
74	505484	4477525.2	365	508371.88	4484886.42	656	516143.35	4478031.79
75	505468.63	4477550.97	366	508376.76	4484829.3	657	516104.64	4477991.12
76	505449.13	4477572.72	367	508354.34	4484752.82	658	516077.36	4477969.64
77	505620.85	4478070.99	368	508342.38	4484687.04	659	516046.85	4477952.35
78	506318.36	4478128.31	369	508337.68	4484634.05	660	516012.1	4477935.02
79	506981.8	4478481.33	370	508322.38	4484583.06	661	515980.45	4477925.13
80	506990.29	4478499.12	371	508303.95	4484527.79	662	515938.34	4477904.54
81	507016.65	4478525.33	372	508256	4484461.61	663	515918.47	4477882.08
82	507329.71	4479054.1	373	508207.88	4484410.24	664	515907.21	4477848.07
83	507452.65	4480087.05	374	508190.28	4484375.1	665	515902.46	4477800.37
84	507467.14	4480146.32	375	508198.1	4484339.2	666	515892.53	4477742.03
85	507487.57	4480143.87	376	508270.74	4484374.96	667	515882.46	4477696.39
86	507502.78	4480144.71	377	508323.22	4484415.79	668	515858.61	4477651.65
87	507536.78	4480169.04	378	508384.22	4484451.42	669	515829.52	4477602.62
88	507527.28	4480189.45	379	508437.72	4484495.43	670	515800.46	4477551.47
89	507525.8	4480203.33	380	508544.9	4484511.12	671	515790.22	4477520.65
90	507525.62	4480219.87	381	508640.88	4484506.2	672	515774.78	4477481.3
91	507526.77	4480235.1	382	508742.85	4484476.66	673	515759.31	4477445.13
92	507529.2	4480253.66	383	508796.17	4484443.38	674	515749.24	4477399.48
93	507542.89	4480271.68	384	508829.32	4484414.11	675	515684.82	4477291.82
94	507553.99	4480285.7	385	508873.9	4484404.03	676	515669.85	4477211.18
95	507553.13	4480302.9	386	508893.11	4484390.48	677	515657.51	4477178.22
96	507552.3	4480317.45	387	508899.79	4484361.97	678	515553.21	4477179.65
97	507544.23	4480329.27	388	508903.23	4484338.72	679	515553.21	4477179.65
98	507534.76	4480347.02	389	508948.04	4484308.52	680	515239.97	4477006.59
99	507531.36	4480355.59	390	509042.35	4484252.18	681	514699.18	4476760.15
100	507523.22	4480372.7	391	509047.17	4484249.3	682	514191.05	4476701.97
101	507522.78	4480373.97	392	509118.56	4484209.87	683	514120.63	4476685.98
102	507517.75	4480388.52	393	509191.83	4484190.59	684	513743.54	4476602.36
103	507516.95	4480401.08	394	509221.49	4484188.81	685	513338.62	4476619.27
104	507519.22	4480404.42	395	509251.16	4484187.03	686	512781.59	4476662.48
105	507521.5	4480407.75	396	509300.01	4484173.82	687	512221.99	4476513.17

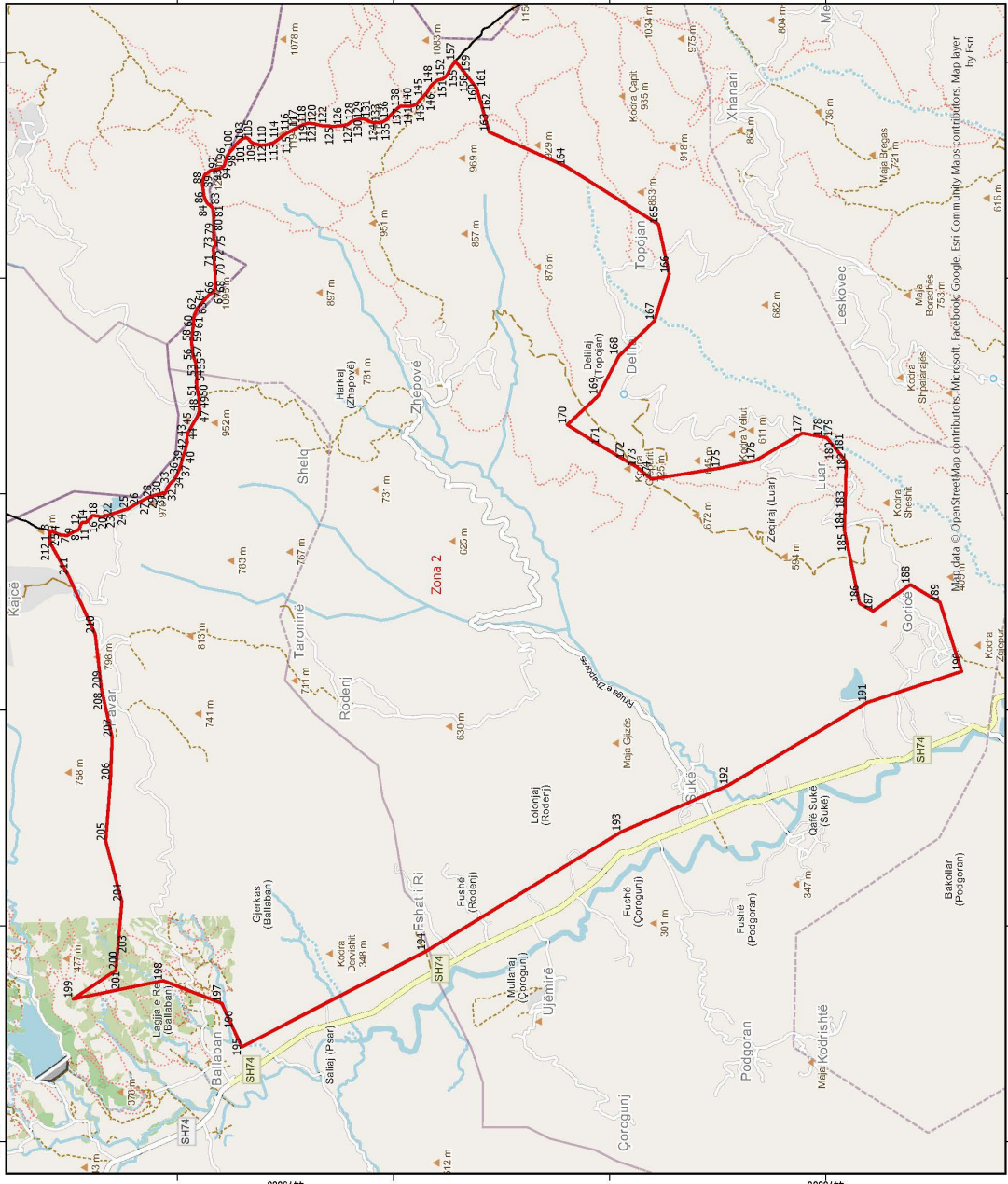
106	507525.43	4480411.11	397	509303.39	4484155.85	688	511676.18	4476560.55
107	507528.58	4480414.32	398	509306.54	4484126.71	689	511588.29	4476568.18
108	507535.9	4480421.81	399	509315.54	4484111.53	690	511588.24	4476568.18
109	507539.08	4480423.55	400	509329.71	4484075.69	691	511587.15	4476568.28
110	507545.77	4480427.22	401	509335.38	4484042.93	692	511320.64	4476964.28
111	507555.63	4480432.62	402	509328.28	4484015.32	693	511491.03	4476131.17
112	507575.79	4480463.95	403	509319.01	4483991.93	694	511281.05	4475589.47
113	507586.86	4480479.96	404	509315.07	4483966.47	695	511042.93	4475480
114	507599.25	4480495.32	405	509351.42	4483935.12	696	510876.34	4475403.42
115	507611.64	4480512	406	509371.81	4483911	697	510443.96	4475204.68
116	507623.35	4480530	407	509389.01	4483887.9	698	510172.49	4475202.65
117	507631.81	4480542.01	408	509411.4	4483874.39	699	510138.79	4475221.48
118	507633.68	4480552.62	409	509420.14	4483850.14	700	509981.28	4475309.46
119	507636.81	4480568.53	410	509445.85	4483823.96	701	509734.1	4475523.58
120	507638.01	4480579.13	411	509474.64	4483806.29	702	509300.36	4475871.97
121	507639.93	4480584.45	412	509500.11	4483800.23	703	509379.97	4475443.64
122	507644.5	4480589.79	413	509504.71	4483768.52	704	509238.66	4475017.65
123	507656.99	4480597.21	414	509512.7	4483717.79	705	509500.17	4474858.99
124	507667.52	4480602.63	415	509527.79	4483693.61	706	509855.12	4474405.28
125	507675.33	4480613.97	416	509545.96	4483678.99	707	509968.16	4474105.37
126	507673.17	4480629.82	417	509547.19	4483663.12	708	509897.84	4472963.51
127	507672.33	4480645.03	418	509547.39	4483646.18	709	509896.89	4472948.21
128	507670.21	4480656.92	419	509552.87	4483629.31	710	509896.58	4472947.84
129	507668.75	4480669.48	420	509572.29	4483597.76	711	509825.71	4472865.43
130	507668.64	4480678.74	421	509603.45	4483556.83	712	509710.84	4472731.85
131	507669.89	4480685.37	422	509638.82	4483519.11	713	509362.53	4472514.27
132	507673.11	4480693.35	423	509700.59	4483486.99	714	508957.69	4472484.31
133	507678.28	4480704.65	424	509739.91	4483474.73	715	508795.92	4472483.11
134	507687.41	4480716.01	425	509770.94	4483445.44	716	508039.99	4472450.53
135	507689.97	4480723.31	426	509804.18	4483408.76	717	508027.04	4472454.72
136	507691.83	4480734.59	427	509832.17	4483367.78	718	507984.48	4472468.47
137	507699.64	4480746.58	428	509853.92	4483317.21	719	507877.02	4472503.19
138	507700.83	4480758.51	429	509877.86	4483260.31	720	507552.28	4472554.14
139	507700.69	4480770.42	430	509911.34	4483201.4	721	506605	4473085.29
140	507697.9	4480782.96	431	509959.28	4483082.3	722	506602.69	4473105.42
141	507697.75	4480796.19	432	509933.63	4483010.02	723	506602.33	4473137.18
142	507698.93	4480808.78	433	509899.22	4482963.04	724	506610.18	4473145.21
143	507701.44	4480821.38	434	509891.38	4482907.9	725	506635.55	4473148.67
144	507704.57	4480836.63	435	509879.51	4482833.65	726	506657.6	4473164.8
145	507705.69	4480854.51	436	509874.75	4482787.01	727	506665.33	4473183.95
146	507704.9	4480865.75	437	509886.61	4482768.09	728	506663.41	4473212.51
147	507697.4	4480885.52	438	509911.16	4482750.37	729	506653.76	4473223.52
148	507689.95	4480900.66	439	509924.19	4482721.93	730	506618.63	4473240.59
149	507681.76	4480922.4	440	509935.73	4482637.36	731	506604.09	4473262.66
150	507673	4480936.86	441	509936.6	4482561.14	732	506602.1	4473297.58
151	507659.4	4480969.13	442	509947.7	4482515.74	733	506614.54	4473321.54
152	507655.23	4480986.29	443	509973.84	4482451.45	734	506630.11	4473348.71
153	507653.66	4481008.77	444	509985.88	4482416.65	735	506642.58	4473369.5
154	507653.48	4481023.98	445	510003.44	4482361.79	736	506632.84	4473388.45
155	507653.9	4481045.83	446	510013.56	4482310.03	737	506632.75	4473396.39
156	507652.95	4481070.96	447	510021.42	4482269.88	738	506600.77	4473415.08
157	507646	4481100.66	448	510032.55	4482222.37	739	506594.1	4473443.59
158	507635.11	4481127	449	510047.87	4482178.07	740	506598.54	4473472.23
159	507629.6	4481146.13	450	510079.97	4482148.79	741	506602.94	4473504.04

160	507616.25	4481156.57	451	510111.19	4482102.56	742	506605.78	4473534.25
161	507611.53	4481163.79	452	510128.66	4482056.17	743	506611.77	4473566.08
162	507608.86	4481166.41	453	510142.9	4482013.98	744	506603.49	4473596.16
163	507590.93	4481171.5	454	510170.1	4481949.71	745	506590.63	4473610.31
164	507577.57	4481182.6	455	510233.2	4481893.25	746	506571.14	4473648.2
165	507575.52	4481188.53	456	510284.52	4481849.36	747	506564.37	4473684.65
166	507576.78	4481194.5	457	510321.77	4481832.85	748	506579.82	4473722.94
167	507576.69	4481201.78	458	510367.5	4481814.31	749	506595.27	4473761.23
168	507581.73	4481224.33	459	510395.11	4481807.21	750	506606.03	4473793.11
169	507581.58	4481237.57	460	510422.72	4481800.11	751	506607.29	4473821.71
170	507578.15	4481248.78	461	510449.3	4481789.82	752	506613.32	4473850.37
171	507570.76	4481257.96	462	510478.87	4481796.51	753	506617.72	4473882.18
172	507559.49	4481259.81	463	510540	4481821.55	754	506617.4	4473910.76
173	507546.24	4481261.65	464	510562.23	4481821.81	755	506582.36	4473919.9
174	507536.28	4481264.18	465	510583.33	4481828.4	756	506563.39	4473911.74
175	507521.06	4481264.67	466	510603.27	4481843.45	757	506531.8	4473897.09
176	507508.47	4481266.52	467	510634.86	4481858.63	758	506508.01	4473893.65
177	507493.16	4481274.28	468	510653.87	4481863.08	759	506495.35	4473890.33
178	507476.49	4481285.34	469	510687.8	4481859.23	760	506465.21	4473886.81
179	507461.15	4481295.76	470	510713.27	4481853.16	761	506459.89	4473935.98
180	507445.18	4481303.52	471	510750.59	4481830.29	762	506459.57	4473964.56
181	507439.52	4481308.29	472	510801.64	4481809.7	763	506459.24	4473993.15
182	507433.87	4481313.06	473	510831.4	4481799.45	764	506457.28	4474026.47
183	507436.29	4481329.22	474	510869.55	4481796.7	765	506445.95	4474045.4
184	507434.93	4481332.52	475	510897.03	4481801.25	766	506418.7	4474067.33
185	507435.5	4481340.46	476	510920.32	4481801.51	767	506399.38	4474090.93
186	507435.4	4481349.06	477	510947.84	4481801.82	768	506386.32	4474122.55
187	507433.33	4481356.98	478	510981.79	4481795.86	769	506387.6	4474149.56
188	507427.2	4481372.13	479	511008.3	4481791.92	770	506392.11	4474171.84
189	507425.84	4481375.42	480	511031.29	4481818.65	771	506412.44	4474222.11
190	507423.74	4481385.33	481	511047.02	4481832.59	772	506419.92	4474240.45
191	507423.61	4481397.24	482	511073.42	4481838.19	773	506424.29	4474275.44
192	507424.13	4481409.81	483	511103.15	4481831.11	774	506436.49	4474320.04
193	507423.92	4481428.34	484	511115.93	4481823.84	775	506436.29	4474337.51
194	507423.02	4481449.5	485	511123.55	4481805.93	776	506402.91	4474340.31
195	507420.86	4481464.7	486	511123.84	4481780.53	777	506361.22	4474316.81
196	507420.69	4481479.26	487	511121.02	4481748.73	778	506345.22	4474327.87
197	507420.54	4481492.49	488	511123.56	4481711.7	779	506307.82	4474357.89
198	507420.36	4481509.03	489	511132.33	4481685.33	780	506297.61	4474382.92
199	507420.21	4481522.26	490	511151.55	4481670.73	781	506299.38	4474402.13
200	507416.77	4481533.47	491	511178.01	4481671.03	782	506314.18	4474438.69
201	507406.08	4481542.62	492	511209.72	4481675.62	783	506325.17	4474461.98
202	507398.76	4481546.5	493	511234.08	4481674.84	784	506334.25	4474478.62
203	507392.14	4481546.43	494	511256.29	4481677.21	785	506345.26	4474499.26
204	507383.86	4481550.96	495	511277.55	4481670.04	786	506346.42	4474513.83
205	507381.49	4481552.26	496	511283.08	4481648.93	787	506346.25	4474529.05
206	507371.53	4481555.46	497	511281.2	4481627.73	788	506345.31	4474553.52
207	507367.9	4481567.92	498	511292.16	4481595.03	789	506346.38	4474576.03
208	507367.29	4481578.57	499	511313.66	4481566.69	790	506346.09	4474601.17
209	507371.13	4481590.53	500	511346.79	4481539.54	791	506360.46	4474617.88
210	507371.39	4481596.48	501	511383.24	4481499.72	792	506362.74	4474650.99
211	507371.66	4481602.44	502	511412.03	4481480.99	793	506377	4474676.96
212	507371.56	4481611.04	503	511450.25	4481471.89	794	506400.98	4474721.57
213	507363.45	4481625.51	504	511505.52	4481453.46	795	506417.61	4474743.26

214	507361.39	4481632.76	505	511544.99	4481427.44	796	506438.16	4474769.3
215	507363.91	4481644.04	506	511563.07	4481420.23	797	506474.02	4474786.58
216	507366.44	4481654	507	511591.58	4481426.91	798	506534.81	4474823.99
217	507365.64	4481665.9	508	511603.26	4481423.86	799	506560.2	4474861
218	507362.19	4481678.43	509	511610.62	4481428.18	800	506557.12	4474869.9
219	507358.1	4481688.97	510	511627.39	4481443.19	801	506549.83	4474871.14
220	507353.37	4481697.52	511	511641.08	4481449.7	802	506539.91	4474870.7
221	507346.58	4481712.66	512	511661.21	4481448.87	803	506529.96	4474872.24
222	507343.13	4481725.2	513	511673.99	4481441.6	804	506522.26	4474880.1
223	507339.72	4481734.42	514	511690.88	4481446.03	805	506507.8	4474901.11
224	507336.3	4481744.31	515	511696.02	4481459.85	806	506492.94	4474928.07
225	507334.23	4481751.57	516	511705.4	4481472.66	807	506474.85	4474947.39
226	507333.5	4481757.51	517	511728.61	4481480.34	808	506450.11	4474969.93
227	507335.38	4481767.46	518	511764.47	4481492.39	809	506421.33	4474999.39
228	507337.25	4481777.41	519	511803.44	4481510.83	810	506398.21	4475024.6
229	507339.12	4481787.35	520	511843.52	4481523.99	811	506375.27	4475052.13
230	507332.97	4481804.49	521	511864.68	4481525.29	812	506355.96	4475074.55
231	507328.22	4481815.02	522	511884.72	4481531.87	813	506325.9	4475099.22
232	507322.19	4481821.57	523	511900.38	4481551.1	814	506296	4475110.39
233	507316.84	4481826.8	524	511915.08	4481560.86	815	506293.93	4475117.91
234	507303.61	4481826.65	525	511934.28	4481548.38	816	506303.39	4475123.98
235	507296.35	4481824.59	526	511955.88	4481510.51	817	506312.11	4475124.87
236	507285.74	4481826.45	527	511996.61	4481466.5	818	506325.17	4475128.59
237	507280.39	4481831.69	528	512064.63	4481443.98	819	506337.38	4475137.07
238	507279.64	4481839.62	529	512141.07	4481425.79	820	506346.42	4475145.51
239	507278.24	4481846.22	530	512200.49	4481413.75	821	506351.79	4475161.84
240	507274.17	4481854.78	531	512244.98	4481412.14	822	506351.61	4475178.12
241	507262.22	4481858.61	532	512335.95	4481419.52	823	506346.66	4475194.34
242	507250.25	4481863.77	533	512439.67	4481422.82	824	506333.8	4475208.49
243	507248.21	4481868.38	534	512486.11	4481436.05	825	506322.95	4475219.88
244	507246.83	4481873.66	535	512564.32	4481447.52	826	506311.66	4475234.84
245	507242.12	4481880.22	536	512634.24	4481444.08	827	506298.73	4475254.55
246	507230.8	4481886.71	537	512714.65	4481449.22	828	506297.1	4475258.9
247	507226.11	4481891.95	538	512763.22	4481460.36	829	506298.19	4475267.25
248	507225.36	4481899.22	539	512782.4	4481449.99	830	506296.05	4475281.12
249	507224.64	4481904.51	540	512818.58	4481433.46	831	506290.4	4475289.39
250	507223.9	4481911.11	541	512875.92	4481419.29	832	506285.13	4475298.86
251	507222.49	4481919.04	542	512977.76	4481401.38	833	506277.5	4475306.32
252	507218.45	4481925.61	543	513079.7	4481375.01	834	506267.81	4475320.5
253	507211.13	4481928.84	544	513164.85	4481335.74	835	506263.41	4475323.63
254	507195.22	4481931.3	545	513237.86	4481291.64	836	506259.96	4475347.81
255	507201.7	4481943.29	546	513244.54	4481262.07	837	506249.39	4475369.92
256	507216.11	4481956.68	547	513264.04	4481223.12	838	506241.77	4475376.58
257	507208.85	4481954.62	548	513303.65	4481184.39	839	506227.73	4475388.73
258	507199.49	4481963.77	549	513318.82	4481153.86	840	506214.47	4475403.27
259	507182.75	4481980.79	550	513336.08	4481125.47	841	506208.8	4475412.74
260	507139.25	4482012.19	551	513350.17	4481097.04	842	506209.65	4475443.32
261	507107.03	4482031.48	552	513363.01	4481085.54	843	506211.58	4475483.04
262	507093.68	4482039.47	553	513392.68	4481082.7	844	506206.05	4475515.93
263	507090.23	4482042.05	554	513439.3	4481080.05	845	506196.66	4475538.06
264	507069.65	4482057.46	555	513646.64	4481001.93	846	506179.87	4475548.59
265	507031.99	4482088	556	513673.19	4480994.82	847	506180.21	4475553.36
266	506981.54	4482124.75	557	513706.09	4480987.79	848	506194.64	4475576.55
267	506937.42	4482164.75	558	513734.7	4480985.99	849	506192.47	4475586.66

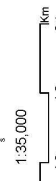
268	506934.22	4482164.48	559	513764.38	4480983.15	850	506184.01	4475604.22
269	506929.64	4482163.2	560	513809.9	4480983.67	851	506179.8	4475624.82
270	506925.06	4482161.92	561	513833.15	4480987.11	852	506169.73	4475659.26
271	506926.12	4482165.43	562	513859.61	4480988.47	853	506163.1	4475697.69
272	506924.56	4482178.1	563	513888.14	4480993.02	854	506162.08	4475717.13
273	506927.64	4482186.87	564	513915.71	4480989.1	855	506156.66	4475738.08
274	506934.15	4482192.06	565	513932.78	4480977.65	856	506158.47	4475756
275	506941.8	4482198.15	566	513946.11	4480957.69	857	506161.44	4475774.29
276	506944.12	4482203.73	567	513965.21	4480953.67	858	506164.46	4475787.43
277	506955.14	4482212.59	568	513998.15	4480943.45	859	506168.73	4475796.21
278	506963.02	4482217.84	569	514036.48	4480924.12	860	506168.64	4475802.24
279	506970.9	4482223.09	570	514070.51	4480911.45	861	506168.87	4475818.84
280	506983.51	4482231.97	571	514116.57	4480864.33	862	506163.53	4475835.06
281	506996.89	4482242.44	572	514169.99	4480821.52	863	506138.98	4475864.16
282	507014.25	4482251.38	573	514210.6	4480788.1	864	506114.43	4475893.27
283	507022.93	4482256.24	574	514243.95	4480741.9	865	506091.87	4475922.39
284	507037.14	4482264.34	575	514256.17	4480691.21	866	506068.14	4475949.12
285	507041.04	4482269.94	576	514273.67	4480641.65	867	506048.88	4475966.77
286	507043.36	4482275.53	577	514318.63	4480597.69	868	506029.93	4475992.36
287	507043.3	4482281.09	578	514362.47	4480560.07	869	506004.08	4476031.38
288	507039.31	4482282.63	579	514396.85	4480515.99	870	505953.57	4476109.02
289	507015.55	4482277.59	580	514420.47	4480486.62	871	505936.45	4476136.38
290	507005.94	4482284.63	581	514453.89	4480434.06	872	505921.55	4476160.19
291	507001.08	4482292.52	582	514476.36	4480413.14	873	505909.9	4476178.8

ZONA ME PËRPARËSI ZHVILLIMIN E EKONOMISË MALORE
ZONA 2, NJËSIA ADMINISTRATIVE SUKË DHE NJËSIA ADMINISTRATIVE BALLABAN, BASHKIA KËLCYRË, QARKU GJIROKASTËR



Njësia Administrative Zona Sipërfaqe (Ha)

Njësia Administrative	Zona	Sipërfaqe (Ha)
Ballaban	Zona 1	6397
Sukë dhe Ballaban	Zona 2	4089
Sukë dhe Ballaban	Zona 3	1836
Dëshnicë, Sukë dhe Këlcyrë	Zona 4	2561
Dëshnicë, Sukë dhe Këlcyrë	Zona 5	6592
Këlcyrë	Zona 6	671
Këlcyrë	Zona 7	2515
Këlcyrë	Zona 8	32



Legjendë

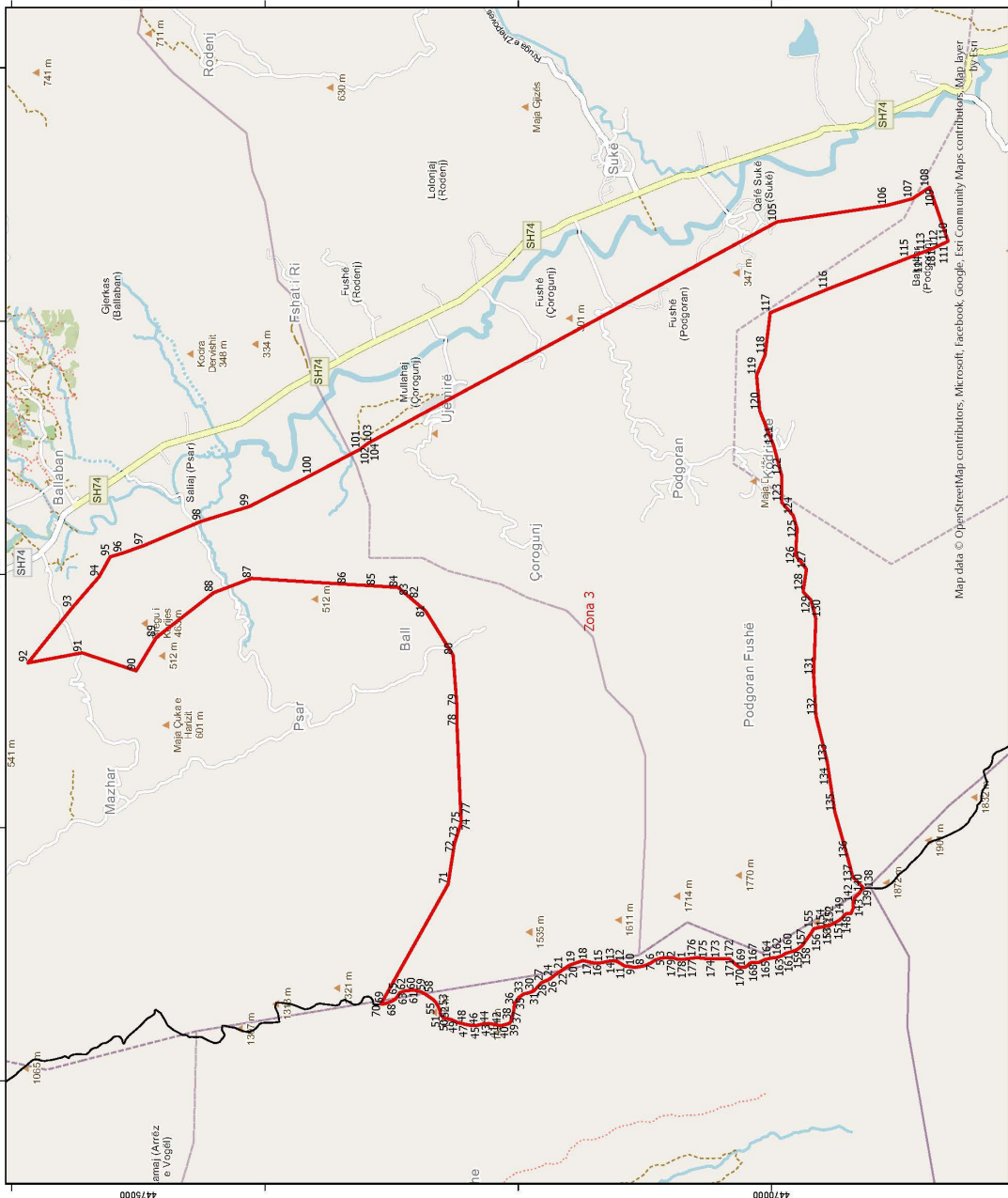
- Zona me përparësi zhvillimin e ekonomisë malore
- Bashkia Këlcyrë
- Ndërtesa
- Izolpse
- Kategoritë e Rijetit Rrugor
- C- Rruge Interurbane Dydrese
- F- Rruge Lokale

*Zona 2 ndodhet në territorin e Njësise Administrative Sukë, me sipërfaqe prej 4089 ha

**Sistemi Koordinativ: KR.GJ.SH (Komiza Referenca Gjeodezike Shiptare) EPSG 6870

Zona 2								
Njësia Administrative Sukë dhe Njësia Administrative Ballaban								
Nr.	Koordinata X	Koordinata Y	Nr.	Koordinata X	Koordinata Y	Nr.	Koordinata X	Koordinata Y
1	515553.21	4477179.65	72	518210.17	4475660.26	143	519617.37	4473780.98
2	515553.21	4477179.65	73	518264.08	4475668.28	144	519645.15	4473758
3	515657.51	4477178.22	74	518289.58	4475660.1	145	519677.25	4473728.72
4	515645.18	4477145.26	75	518309.86	4475645.51	146	519722.2	4473685.82
5	515619.42	4477082.5	76	518327.87	4475644.65	147	519776.53	4473656.79
6	515616.68	4477044.36	77	518344.69	4475655.43	148	519796.88	4473635.84
7	515611.61	4477024.18	78	518365.77	4475664.14	149	519830.12	4473599.16
8	515632.12	4476989.48	79	518396.49	4475662.37	150	519836.76	4473573.83
9	515652.66	4476952.65	80	518430.36	4475663.81	151	519844.49	4473545.33
10	515665.76	4476917.86	81	518590.26	4475661.39	152	519860.62	4473523.28
11	515683.94	4476901.13	82	518640.99	4475669.37	153	519884.17	4473501.31
12	515705.14	4476899.25	83	518669.33	4475690.87	154	519905.46	4473490.96
13	515731.79	4476883.67	84	518691.22	4475721.82	155	519941.62	4473476.55
14	515738.33	4476866.8	85	518719.61	4475739.08	156	519972.61	4473451.49
15	515737.55	4476842.44	86	518760.74	4475753.31	157	520010.97	4473429.69
16	515754.7	4476823.58	87	518814.65	4475761.33	158	519891.54	4473333.35
17	515783.57	4476798.5	88	518867.51	4475768.28	159	519891.51	4473333.32
18	515798.51	4476788.08	89	518910.97	4475763.48	160	519807.54	4473267.69
19	515798.75	4476766.9	90	518959.88	4475744.98	161	519759.79	4473230.38
20	515793.83	4476734.03	91	518999.76	4475682.96	162	519628.32	4473193.03
21	515787.86	4476700.08	92	519008.86	4475626.95	163	519353.75	4473115.04
22	515798.79	4476669.5	93	519019.87	4475590.02	164	519035.8	4472409.91
23	515806.71	4476625.12	94	519040.25	4475566.96	165	518498.06	4471549.48
24	515834.13	4476540.73	95	519066.83	4475556.67	166	518037.23	4471449.69
25	515865.28	4476448.71	96	519094.44	4475549.57	167	517604.91	4471585.52
26	515888.99	4476411.92	97	519124.18	4475541.44	168	517278.25	4471914.67
27	515925.7	4476348.81	98	519150.82	4475525.86	169	516910.29	4472104.87
28	515962.5	4476278.29	99	519176.43	4475508.15	170	516641.23	4472392.58
29	515984.37	4476217.13	100	519196.78	4475488.26	171	516448.82	4472088.88
30	516003.17	4476146.4	101	519234.15	4475460.1	172	516314.27	4471860.32
31	516008.87	4476110.47	102	519249.13	4475446.5	173	516248.87	4471749.22
32	516049.24	4476098.22	103	519268.42	4475425.54	174	516137.44	4471613.21
33	516089.8	4476069.03	104	519280.21	4475412.97	175	516239.59	4470976.35
34	516126.2	4476033.45	105	519295.31	4475388.79	176	516309.99	4470648.52
35	516166.72	4476008.49	106	519300.91	4475361.33	177	516562.95	4470218.49
36	516220.98	4475984.76	107	519289.5	4475341.08	178	516527.92	4470030.93
37	516270.94	4475967.32	108	519270.61	4475326.04	179	516520.79	4469992.73
38	516318.72	4475955.16	109	519250.75	4475303.59	180	516436.45	4469924.29
39	516350.59	4475945.99	110	519239.56	4475263.23	181	516436.38	4469924.23
40	516397.39	4475927.46	111	519229.41	4475223.94	182	516296.8	4469810.97
41	516437.7	4475920.51	112	519235.26	4475175.3	183	515857.16	4469823.15
42	516478.07	4475908.26	113	519254.02	4475107.75	184	515662.15	4469828.57
43	516527.79	4475912	114	519288.42	4475061.55	185	515545.01	4469804.32
44	516561.76	4475903.91	115	519322.8	4475017.47	186	514986.43	4469688.75
45	516633.15	4475864.49	116	519355.2	4474961.72	187	514914.44	4469562.52
46	516721.62	4475811.49	117	519386.56	4474903.85	188	515160.75	4469218.75
47	516779	4475793.08	118	519423.39	4474830.15	189	514996.03	4468945.67
48	516814.96	4475796.67	119	519432.26	4474794.25	190	514354.75	4468743.65
49	516848.84	4475797.05	120	519432.56	4474767.79	191	514066.73	4469620.92
50	516897.51	4475799.72	121	519430.77	4474739.18	192	513302.48	4470900.03
51	516959.8	4475815.25	122	519419.56	4474700.94	193	512869.17	4471891.1
52	517028.54	4475822.38	123	519408.52	4474646.81	194	511765.3	4473696.25
53	517083.62	4475820.88	124	519407.04	4474590.68	195	510876.34	4475403.42
54	517161.89	4475827.06	125	519405.38	4474550.43	196	511042.93	4475480
55	517220.08	4475830.9	126	519412.58	4474475.34	197	511281.05	4475589.47
56	517286.51	4475854.94	127	519422.68	4474424.63	198	511491.03	4476131.17
57	517331.99	4475859.69	128	519450.65	4474385.77	199	511320.64	4476964.28
58	517409.18	4475867.98	129	519464.81	4474350.99	200	511587.15	4476568.28
59	517484.44	4475860.36	130	519474.8	4474309.81	201	511588.24	4476568.18
60	517583.01	4475850.88	131	519475.19	4474275.94	202	511588.29	4476568.18
61	517650.84	4475845.3	132	519454.56	4474227	203	511741.36	4476554.89
62	517702.98	4475822.6	133	519435.99	4474184.44	204	512221.99	4476513.17
63	517718.2	4475815.63	134	519438.57	4474143.18	205	512781.59	4476662.48
64	517779.09	4475763.04	135	519444.33	4474101.95	206	513338.62	4476619.27
65	517808	4475739.35	136	519466.98	4474065.15	207	513743.54	4476602.36
66	517845.45	4475704.84	137	519517.28	4474018.07	208	514120.63	4476685.98
67	517877.7	4475661.79	138	519578.31	4473957.36	209	514191.05	4476701.97
68	517917.04	4475647.42	139	519594.51	4473930.01	210	514699.18	4476760.15
69	517994.32	4475648.29	140	519590.74	4473888.68	211	515239.97	4477006.59
70	518049.34	4475651.03	141	519593.32	4473846.38	212	515553.21	4477179.65
71	518159.36	4475659.69	142	519600.09	4473810.43			

ZONA ME PËRPARËSI ZHVILLIMIN E EKONOMISË MALORE
ZONA 3, NJËSIA ADMINISTRATIVE SUKË DHE NJËSIA ADMINISTRATIVE BALLABAN, BASHKIA KËLCYRË, QARKU GJIROKASTËR



Njësia Administrative	Zona	Sipërfaqe (Ha)
Ballaban	Zona 1	6397
Sukë dhe Ballaban	Zona 2	4089
Sukë dhe Ballaban	Zona 3	1836
Dëshnicë, Sukë dhe Këlcyrë	Zona 4	2561
Dëshnicë, Sukë dhe Këlcyrë	Zona 5	6592
Këlcyrë	Zona 6	671
Këlcyrë	Zona 7	2515
Këlcyrë	Zona 8	32



Legjendë

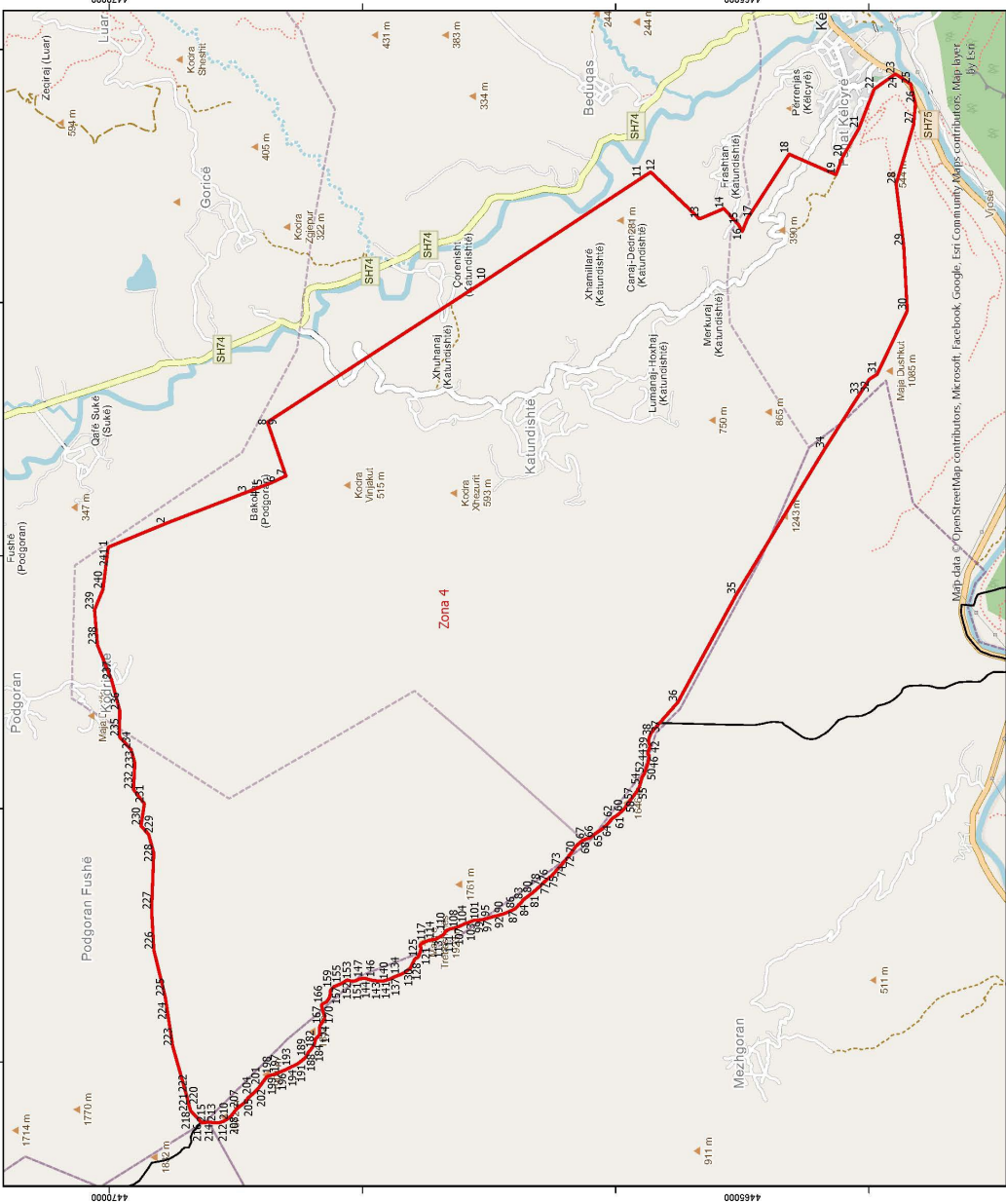
- Zona me përparësi zhvillim e ekonomisë malore
- Bashkia Këlcyrë
- Ndërtuesa
- Izolpese
- Kategoritë e Rrjetit Rrugor
- C. Rruge Interurbane Dytësore
- F. Rruge Lokale

Zona 3, modellet në kufirin e Njësia Administrative Sukë, me sipërfaqe prej 1836 ha

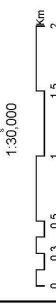
*Sistemi Koordinativ: KRGLSH (Komiza Referense Gjeodezike Shqiptare) EPSG 6870

Zona 3								
Njësia Administrative Sukë dhe Njësia Administrative Ballaban								
Nr.	Koordinata X	Koordinata Y	Nr.	Koordinata X	Koordinata Y	Nr.	Koordinata X	Koordinata Y
1	506963.18	4470750.76	62	506713.18	4472884.33	123	510568.18	4469919.18
2	506970.95	4470781.27	63	506706.6	4472904.9	124	510466.18	4469828.63
3	506973.62	4470837.54	64	506696.75	4472933.38	125	510359.38	4469798.4
4	506970.09	4470857.35	65	506672.75	4472948.99	126	510152.38	4469809.81
5	506966.55	4470877.17	66	506645.5	4472970.91	127	510040.3	4469723.68
6	506952.84	4470920.02	67	506630.9	4472997.75	128	509863.65	4469750.28
7	506929.27	4470956.15	68	506617.9	4473024.6	129	509797.32	4469689.43
8	506908.89	4471002.24	69	506607.97	4473059.42	130	509650.59	4469649.42
9	506894.8	4471078.18	70	506605	4473085.29	131	509201.08	4469667
10	506904.13	4471131.22	71	507552.28	4472554.14	132	508882.26	4469648.65
11	506907.14	4471157.72	72	507877.02	4472503.19	133	508512.77	4469559.09
12	506936.35	4471207.68	73	507984.48	4472468.47	134	508405.8	4469542.82
13	506949.24	4471237.61	74	508026.91	4472454.76	135	508123.36	4469499.8
14	506948.95	4471264.07	75	508027.04	4472454.72	136	507754.08	4469395.28
15	506934.96	4471330.08	76	508039.99	4472450.53	137	507612.64	4469358.89
16	506927.82	4471376.32	77	508097.15	4472452.99	138	507521.07	4469271.61
17	506933.95	4471419.41	78	508795.92	4472483.11	139	507516.69	4469284.26
18	506949.71	4471489.06	79	508957.69	4472484.31	140	507482.57	4469305.05
19	506929.19	4471548.39	80	509362.53	4472514.27	141	507448.29	4469340.66
20	506915.47	4471591.24	81	509710.84	4472731.85	142	507405.76	4469357.12
21	506881.79	4471643.8	82	509803.87	4472840.03	143	507367.69	4469352.45
22	506861.64	4471670.04	83	509825.71	4472865.43	144	507323.12	4469372.18
23	506838.03	4471709.48	84	509896.58	4472947.84	145	507324	4469387.54
24	506821.27	4471729.14	85	509907.79	4473125.05	146	507322.81	4469399.17
25	506811.66	4471742.54	86	509922.1	4473357.44	147	507321.67	4469407.1
26	506797.74	4471761.96	87	509968.16	4474105.37	148	507312.54	4469418.11
27	506784.09	4471798.2	88	509855.12	4474405.28	149	507307.16	4469425.99
28	506770.6	4471821.21	89	509500.17	4474858.99	150	507288.52	4469439.58
29	506740.53	4471847.33	90	509238.66	4475017.65	151	507267.03	4469467.79
30	506713.76	4471873.5	91	509379.97	4475443.64	152	507236.65	4469520.39
31	506703.61	4471893.24	92	509300.36	4475871.97	153	507222.97	4469559.94
32	506693.31	4471926.21	93	509734.1	4475523.58	154	507212.45	4469612.76
33	506686.36	4471955.9	94	509981.28	4475309.46	155	507201.93	4469665.57
34	506659.45	4471995.3	95	510138.79	4475221.48	156	507165.28	4469688.32
35	506616.1	4472024.59	96	510166.67	4475128.09	157	507115.24	4469724.15
36	506599.49	4472031.02	97	510227.1	4474958.27	158	507061.86	4469763.25
37	506559.75	4472033.88	98	510419.27	4474502.13	159	507031.6	4469805.92
38	506476.82	4472052.79	99	510535.3	4474124.74	160	507017.88	4469848.77
39	506453.48	4472069.07	100	510786.67	4473630.17	161	507007.51	4469888.36
40	506439.69	4472118.54	101	510988.34	4473247.13	162	506987.33	4469917.91
41	506439.31	4472151.63	102	511017.66	4473209.9	163	506973.61	4469960.77
42	506442.28	4472181.44	103	511031.24	4473192.65	164	506969.89	4469997.12
43	506451.83	4472214.63	104	511041.62	4473174.65	165	506959.4	4470046.63
44	506451.24	4472267.56	105	512783.3	4469956.28	166	506935.65	4470099.3
45	506437.33	4472326.96	106	512913.34	4469087.66	167	506935.08	4470148.92
46	506436.88	4472366.66	107	512967.02	4468887.19	168	506931.59	4470165.42
47	506449.36	4472432.97	108	513055.25	4468751.26	169	506898.06	4470204.75
48	506462.03	4472482.87	109	513055.24	4468751.26	170	506894.26	4470247.72
49	506483.76	4472527.59	110	512629.7	4468604.98	171	506923.59	4470287.75
50	506495.86	4472581.72	111	512602.14	4468664.38	172	506966.07	4470334.55
51	506520.9	4472613.77	112	512574.57	4468723.77	173	506965.25	4470407.33
52	506554.2	4472618.91	113	512550.34	4468786.53	174	506964.84	4470443.72
53	506584.24	4472630.36	114	512527.88	4468844.72	175	506964.16	4470503.27
54	506603.96	4472641.7	115	512501.13	4468914.02	176	506973.08	4470592.7
55	506623.69	4472653.04	116	512253.77	4469554.81	177	506962.33	4470665.37
56	506644.08	4472675.51	117	512066.56	4470009.78	178	506958.28	4470731.49
57	506649.24	4472682.91	118	511732.97	4470050.65	179	506963.18	4470750.76
58	506690.96	4472742.74	119	511571.33	4470117.77	180	512564.05	4468754.21
59	506704.93	4472771.48	120	511293.16	4470093.73	181	512573.98	4468729.35
60	506713.99	4472812.88	121	511018.62	4469983.42	182	512574.51	4468729.53
61	506713.59	4472847.81	122	510775.55	4469918.25	183	512564.05	4468754.21

ZONA ME PËRPARËSI ZHVILLIMIN E EKONOMISË MALORE
ZONA 4, NJËSITE ADMINISTRATIVE DËSHNICË, SUKË DHE KËLCYRË, BASHKIA KËLCYRË, QARKU GJIROKASTËR



Njësia Administrative	Zona	Sipërfaqe (Ha)
Ballaban	Zona 1	6397
Sukë dhe Ballaban	Zona 2	4089
Sukë dhe Ballaban	Zona 3	1836
Dëshnicë, Sukë dhe Këlcyrë	Zona 4	2561
Dëshnicë, Sukë dhe Këlcyrë	Zona 5	6592
Këlcyrë	Zona 6	671
Këlcyrë	Zona 7	2515
Këlcyrë	Zona 8	32



Legjendë

- Zona me përparësi zhvillimin e ekonomisë malore
- Bashkia Këlcyrë
- Nderfesa
- Izopse
- Kategoritë e Rrjetit Rrugor
- C. Rruge Interurbane Dyfalore
- E. Rruge Urbane Dyfalore
- F. Rruge Lokale

*Zona 4 ndodhet në territorin e Njësise Administrative Dëshnicë, me sipërfaqe prej 2561 ha
 **Sistemi Koordinativ: KRGLSH (Komiza) Referencë Gjeodezike Shqiptare) EPSG:6870

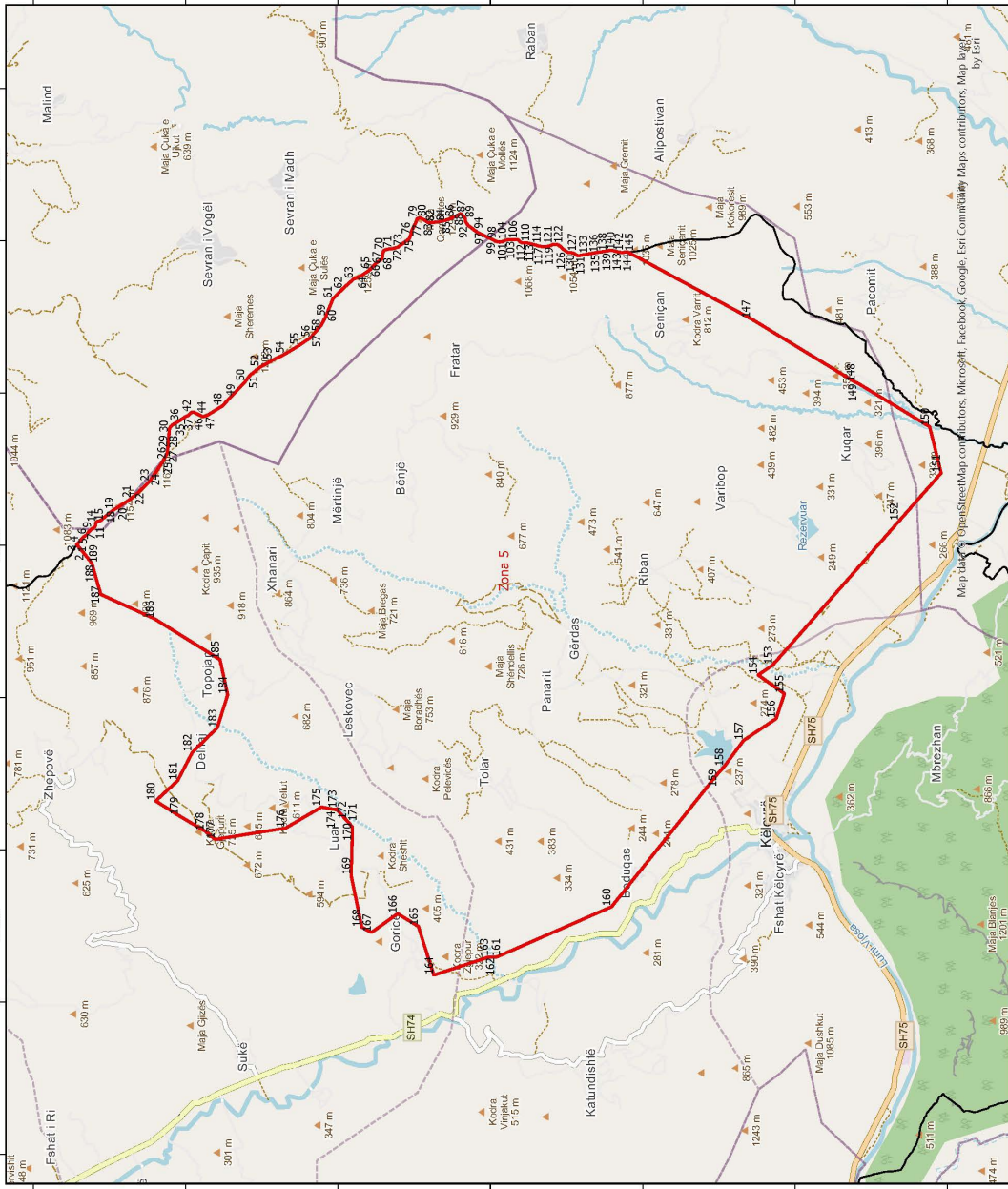
Zona 4
Njësitë Administrative Dëshnicë, Sukë dhe Këlcyrë

Nr.	Koordinata X	Koordinata Y	Nr.	Koordinata X	Koordinata Y	Nr.	Koordinata X	Koordinata Y
1	512066.56	4470009.78	82	509301.28	4466702.02	162	508504.4	4468263.14
2	512253.77	4469554.81	83	509280.85	4466729.31	163	508486.27	4468274.58
3	512501.12	4468914.02	84	509257.37	4466745.99	164	508473.45	4468285.03
4	512527.88	4468844.72	85	509241.27	4466765.92	165	508466.95	4468297.66
5	512550.34	4468786.53	86	509212.38	4466792.07	166	508459.37	4468312.4
6	512574.57	4468723.77	87	509202.68	4466807.84	167	508449.71	4468323.93
7	512629.7	4468604.98	88	509192.91	4466828.9	168	508421.18	4468319.37
8	513055.24	4468751.26	89	509182.06	4466852.07	169	508408.54	4468313.94
9	513055.25	4468751.26	90	509170.05	4466884.76	170	508383.2	4468307.3
10	514176.39	4467024.07	91	509164.55	4466902.69	171	508363.19	4468297.54
11	514984.08	4465795.05	92	509159.05	4466920.63	172	508336.67	4468302.54
12	515031.44	4465722.99	93	509153.53	4466940.69	173	508322.81	4468310.85
13	514660.98	4465337.3	94	509147.92	4466969.21	174	508291.86	4468332.74
14	514741.53	4465145.52	95	509141.33	4466990.31	175	508272.73	4468338.87
15	514613.86	4465029.32	96	509133.66	4467012.46	176	508271.41	4468339.07
16	514562.6	4464999.08	97	509128.16	4467031.45	177	508252.58	4468341.82
17	514666.48	4464957.23	98	509127.29	4467035.91	178	508243.06	4468341.71
18	515171.32	4464629.02	99	509121.41	4467066.31	179	508233.53	4468341.61
19	515009.54	4464259.74	100	509120.05	4467092.77	180	508213.42	4468341.38
20	515146.86	4464208.1	101	509117.65	4467118.15	181	508194.19	4468355.98
21	515376.81	4464077.57	102	509113.23	4467133.98	182	508177.03	4468375.91
22	515686.72	4463956.85	103	509102.36	4467159.27	183	508163.28	4468374.69
23	515804.48	4463791.76	104	509092.49	4467189.86	184	508143.1	4468379.76
24	515796.08	4463774.07	105	509087.07	4467200.39	185	508130.34	4468384.91
25	515725.45	4463669.06	106	509081.66	4467210.91	186	508111.13	4468398.45
26	515571.23	4463631.49	107	509069.71	4467238.31	187	508092.98	4468412.01
27	515407.66	4463645.41	108	509055.45	4467281.55	188	508073.72	4468429.79
28	514935.19	4463784.01	109	509050.94	4467305.85	189	508038.59	4468446.34
29	514446.7	4463724.22	110	509035.7	4467342.74	190	508005.35	4468484.08
30	513934.3	4463696.96	111	509010.17	4467354.1	191	507988.13	4468508.23
31	513432.97	4463934.45	112	508999.4	4467369.86	192	507971.93	4468536.64
32	513393.27	4463996.46	113	508969.17	4467421.39	193	507961.05	4468562.98
33	513270.58	4464075.07	114	508968.33	4467425.82	194	507952.42	4468576.65
34	512846.88	4464346.55	115	508963.54	4467450.97	195	507939.4	4468605.09
35	511691.38	4465047.25	116	508960.08	4467476.35	196	507922	4468645.12
36	510841.71	4465508.82	117	508950.3	4467498.47	197	507906.75	4468683.06
37	510598.96	4465721.44	118	508943.72	4467518.51	198	507895.73	4468721.06
38	510568.98	4465731.7	119	508926.5	4467543.73	199	507882.65	4468754.79
39	510541.35	4465740.91	120	508915.86	4467547.84	200	507848.46	4468781.93
40	510518.1	4465737.47	121	508908.55	4467539.29	201	507816.44	4468804.86
41	510508.63	4465732.07	122	508888.44	4467539.06	202	507792.96	4468821.53
42	510489.6	4465729.74	123	508867.19	4467545.17	203	507773.69	4468840.37
43	510467.28	4465736.9	124	508848.07	4467551.31	204	507739.41	4468875.98
44	510449.18	4465746.22	125	508824.63	4467563.75	205	507717.95	4468901.15
45	510435.39	4465748.19	126	508818.1	4467579.56	206	507675.22	4468934.55
46	510422.82	4465736.4	127	508808.45	4467590.04	207	507632.23	4468991.23
47	510405.88	4465736.21	128	508791.44	4467596.2	208	507574.54	4469037.17
48	510393.15	4465738.18	129	508769.08	4467607.59	209	507555.24	4469058.12

49	510354.95	4465746.22	130	508744.14	4467619.25	210	507531.52	4469095.97
50	510326.25	4465756.48	131	508740.34	4467621.03	211	507528.96	4469102.89
51	510310.3	4465762.65	132	508703.78	4467671.44	212	507520.6	4469125.49
52	510277.36	4465772.87	133	508691.88	4467693.54	213	507520.05	4469174.33
53	510249.63	4465790.56	134	508688.01	4467704.71	214	507521.81	4469205.97
54	510218.82	4465799.74	135	508684.22	4467715.68	215	507521.47	4469235.61
55	510178.46	4465810.93	136	508676.67	4467735.38	216	507521.07	4469271.61
56	510152.94	4465821.23	137	508669.52	4467751.51	217	507605.95	4469352.51
57	510101.69	4465858.76	138	508665.73	4467758.88	218	507612.64	4469358.89
58	510071.79	4465881.72	139	508652.69	4467788.38	219	507645.34	4469367.3
59	509993.89	4465935.89	140	508640.57	4467830.59	220	507656.37	4469370.14
60	509970.29	4465963.15	141	508640.28	4467856	221	507673.52	4469374.55
61	509944.55	4465992.51	142	508640.04	4467877.17	222	507754.08	4469395.28
62	509926.2	4466023	143	508641.79	4467910.01	223	508123.36	4469499.8
63	509873.8	4466069	144	508646.8	4467935.48	224	508405.8	4469542.82
64	509838.4	4466109.89	145	508651.87	4467954.6	225	508512.77	4469559.09
65	509801.81	4466162.41	146	508659.05	4467975.85	226	508882.26	4469648.65
66	509766.32	4466211.77	147	508659.88	4467995.98	227	509201.08	4469667
67	509758.57	4466241.33	148	508656.52	4468011.82	228	509650.59	4469649.42
68	509748.82	4466261.34	149	508652.06	4468031.89	229	509797.32	4469689.43
69	509727.33	4466288.62	150	508643.41	4468047.67	230	509863.65	4469750.28
70	509700.54	4466316.91	151	508637.91	4468065.61	231	510040.3	4469723.68
71	509633.3	4466364.85	152	508637.71	4468083.6	232	510152.38	4469809.81
72	509587.35	4466402.45	153	508645.74	4468122.87	233	510359.38	4469798.4
73	509552.07	4466432.75	154	508631.74	4468143.88	234	510466.18	4469828.63
74	509512.49	4466468.3	155	508619.84	4468165.98	235	510568.18	4469919.18
75	509477.22	4466497.55	156	508611.16	4468184.94	236	510775.55	4469918.25
76	509455.74	4466524.83	157	508602.47	4468203.9	237	511018.62	4469983.42
77	509426.78	4466558.39	158	508595.9	4468222.89	238	511293.16	4470093.73
78	509390.36	4466595.03	159	508579.82	4468240.7	239	511571.33	4470117.77
79	509358.19	4466631.72	160	508564.87	4468252.18	240	511732.97	4470050.65
80	509334.6	4466657.93	161	508520.34	4468258.03	241	512066.56	4470009.78
81	509318.46	4466681.04						

ZONA ME PËRPARËSI ZHVILLIMIN E EKONOMISË MALORË

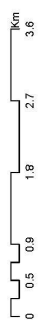
ZONA 5, NJËSITË ADMINISTRATIVE DËSHNICË, SUKË DHE KËLCYRË, BASHKIA KËLCYRË, QARKU GJIROKASTËR



Njësia Administrative	Zona	Sipërfaqe (Ha)
Ballaban	Zona 1	6397
Sukë dhe Ballaban	Zona 2	4089
Sukë dhe Ballaban	Zona 3	1836
Dëshnicë, Sukë dhe Këlcyrë	Zona 4	2561
Dëshnicë, Sukë dhe Këlcyrë	Zona 5	6592
Këlcyrë	Zona 6	671
Këlcyrë	Zona 7	2515
Këlcyrë	Zona 8	32



1:50,000



Legjendë

- Zona me përparësi zhvillimin e ekonomisë malore
- Bashkia Këlcyrë
- Ndërtesa
- Izolpse
- Kategoritë e Rrjetit Rrugor
- C. Rruge Interurbane Dytësore
- E. Rruge Urbane Dytësore
- F. Rruge Lokale

*Zona 5 ndodhet në kornizën e Njësise Administrative Dëshnicë, me sipërfaqe prej 6592 ha

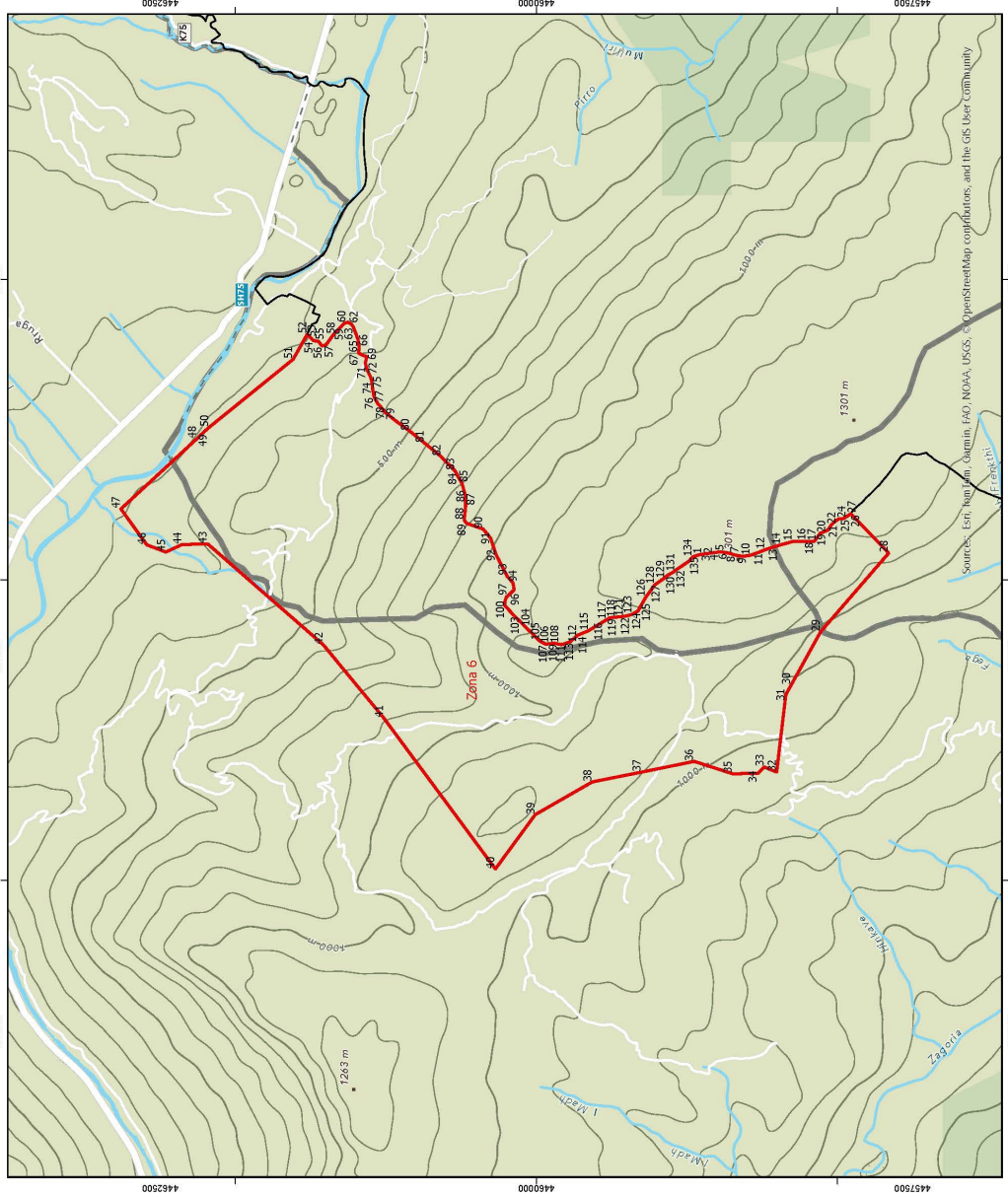
**Sistemi Koordinativ: KRGJSH (Kortiza Referense Gjeodezike Shqiptare)/ EPSG 8970

Zona 5								
Njësitë Administrative Dëshnicë, Sukë dhe Këlcyrë								
Nr.	Koordinata X	Koordinata Y	Nr.	Koordinata X	Koordinata Y	Nr.	Koordinata X	Koordinata Y
1	519891.51	4473333.32	65	523621.94	4469579.44	128	523845.15	4466970.82
2	519891.54	4473333.35	66	523701.12	4469506.22	129	523840.54	4466910.42
3	520010.97	4473429.69	67	523760.15	4469426.28	130	523822.84	4466883.75
4	520034.56	4473403.48	68	523788.96	4469416.16	131	523807.23	4466860.28
5	520109.52	4473342.46	69	523833.47	4469412.43	132	523802.16	4466840.1
6	520136.29	4473301.93	70	523871.72	4469400.16	133	523817.71	4466775.69
7	520174.7	4473275.9	71	523889.19	4469353.77	134	523822.39	4466736.57
8	520197.21	4473251.8	72	523894.14	4469290.3	135	523831.41	4466687.97
9	520217.56	4473230.86	73	523916.17	4469214.31	136	523836.01	4466655.2
10	520236.95	4473201.43	74	523957.02	4469159.72	137	523845	4466609.77
11	520250.88	4473186.76	75	524025.86	4469065.21	138	523854.16	4466548.47
12	520272.09	4473183.83	76	524072.65	4469046.68	139	523857.73	4466513.57
13	520288.01	4473180.83	77	524134.22	4469032.55	140	523871.3	4466437.49
14	520300.79	4473173.56	78	524225.81	4468984.88	141	523869.75	4466386.65
15	520311.51	4473162.04	79	524289.62	4468960.19	142	523853.45	4466330.35
16	520315.94	4473145.15	80	524302.71	4468926.46	143	523847.69	4466277.35
17	520324.71	4473118.78	81	524279.97	4468877.5	144	523848.05	4466245.59
18	520381.57	4473052.72	82	524238.27	4468819.85	145	523849.65	4466197.96
19	520467.52	4472942.52	83	524238.99	4468756.33	146	523849.96	4466193.63
20	520512.19	4472868.78	84	524250.72	4468654.82	147	522976.53	4464579.81
21	520616.67	4472711.15	85	524270.64	4468578.81	148	522138.53	4463202.47
22	520706.77	4472608.41	86	524301.24	4468494.46	149	522136.2	4463189.44
23	520837.24	4472476.58	87	524357.46	4468391.33	150	521556.76	4462232.97
24	520955.89	4472394.17	88	524312.43	4468345.11	151	520948.62	4462081.68
25	521104.13	4472299.5	89	524290.65	4468331.15	152	520314.99	4462637.05
26	521210.62	4472245.65	90	524287.2	4468328.94	153	518427.75	4464291.2
27	521252	4472237.65	91	524256.49	4468329.65	154	518296.57	4464483.19
28	521324.07	4472231.05	92	524199.74	4468291.95	155	518050.13	4464140.42
29	521399.3	4472226.61	93	524171.66	4468247.17	156	517723.74	4464247.87
30	521480.91	4472219.06	94	524147.6	4468221.48	157	517436.41	4464675.32
31	521506.3	4472220.41	95	524127.28	4468192.14	158	517090.27	4464934.15
32	521537.11	4472211.23	96	524106.97	4468162.79	159	517002.64	4465012.47
33	521557.36	4472199.81	97	524067.65	4468081.88	160	515253.89	4466407.58
34	521577.73	4472176.75	98	524020.08	4467981.82	161	514589.57	4467924.09
35	521601.46	4472138.9	99	523991.02	4467929.61	162	514592.95	4467936.76
36	521632.78	4472084.2	100	523981.01	4467878.67	163	514594.07	4468014.73
37	521674.72	4472026.44	101	523984.53	4467848.01	164	514354.75	4468743.65
38	521687.63	4472008.58	102	523997.55	4467820.63	165	514996.03	4468945.67
39	521696.34	4471987.51	103	524007.31	4467799.56	166	515160.75	4469218.75
40	521705.05	4471966.43	104	524010.72	4467779.48	167	514914.44	4469562.52
41	521730.73	4471942.37	105	524015.37	4467742.48	168	514986.43	4469688.75
42	521750.05	4471919.29	106	524015.82	4467702.25	169	515662.15	4469828.57
43	521744.03	4471889.58	107	524016.16	4467672.61	170	516296.8	4469810.97
44	521728.55	4471854.47	108	524010.18	4467639.72	171	516366.59	4469867.6
45	521705.76	4471809.74	109	523995.56	4467621.55	172	516524.35	4470011.83
46	521688.99	4471772.11	110	523980.94	4467603.39	173	516540.33	4470012.43
47	521704.62	4471721.91	111	523972.51	4467583.27	174	516527.92	4470030.93
48	521829.74	4471517.93	112	523972.1	4467542.94	175	516562.95	4470218.49
49	521947.42	4471411.26	113	523966.26	4467497.34	176	516285.49	4470690.17

50	522146.5	4471220.82	114	523957.2	4467455.95	177	516137.44	4471613.21
51	522236.19	4471155.14	115	523943.96	4467409.21	178	516248.87	4471749.22
52	522334.88	4471030.15	116	523929.63	4467365.64	179	516448.82	4472088.88
53	522432.24	4470857.71	117	523920.75	4467308.37	180	516641.23	4472392.58
54	522512.4	4470697.68	118	523923.36	4467264.99	181	516910.29	4472104.87
55	522626.77	4470508.39	119	523930.08	4467232.24	182	517278.25	4471914.67
56	522725.82	4470363.4	120	523939.97	4467200.59	183	517604.91	4471585.52
57	522775	4470321.61	121	523951.87	4467177.43	184	518037.23	4471449.69
58	522892.09	4470218.76	122	523953.48	4467128.74	185	518498.06	4471549.48
59	523001.27	4470161.11	123	523941.09	4467101.08	186	519035.8	4472409.91
60	523109.73	4470119.99	124	523914.93	4467073.25	187	519353.75	4473115.04
61	523235.25	4470068.47	125	523886.7	4467042.23	188	519628.32	4473193.03
62	523363.28	4469942.04	126	523866.92	4467012.36	189	519759.79	4473230.38
63	523496.67	4469796.14	127	523851.31	4466987.83	190	519891.51	4473333.32
64	523546.12	4469685.45						

ZONA ME PËRPARËSI ZHVILLIMIN E EKONOMISË MALORE

ZONA 6, NJËSIA ADMINISTRATIVE KËLCYRË, BASHKIA KËLCYRË, QARKU GJIROKASTËR



Njësia Administrative	Zona	Sipërfaqe (Ha)
Ballaban	Zona 1	6397
Sukë dhe Ballaban	Zona 2	4089
Sukë dhe Ballaban	Zona 3	1836
Dëshnicë, Sukë dhe Këlcyrë	Zona 4	2561
Dëshnicë, Sukë dhe Këlcyrë	Zona 5	6592
Këlcyrë	Zona 6	671
Këlcyrë	Zona 7	2515
Këlcyrë	Zona 8	32

Legjendë

- Zona me përparësi zhvillim e ekonomisë malore
- Bashkia Këlcyrë
- Ndërtesa
- Izojpsë
- Kategoritë e Rrjetit Rrugor
- C- Rruge Intërbanë Dytësore
- F- Rruge Lokale

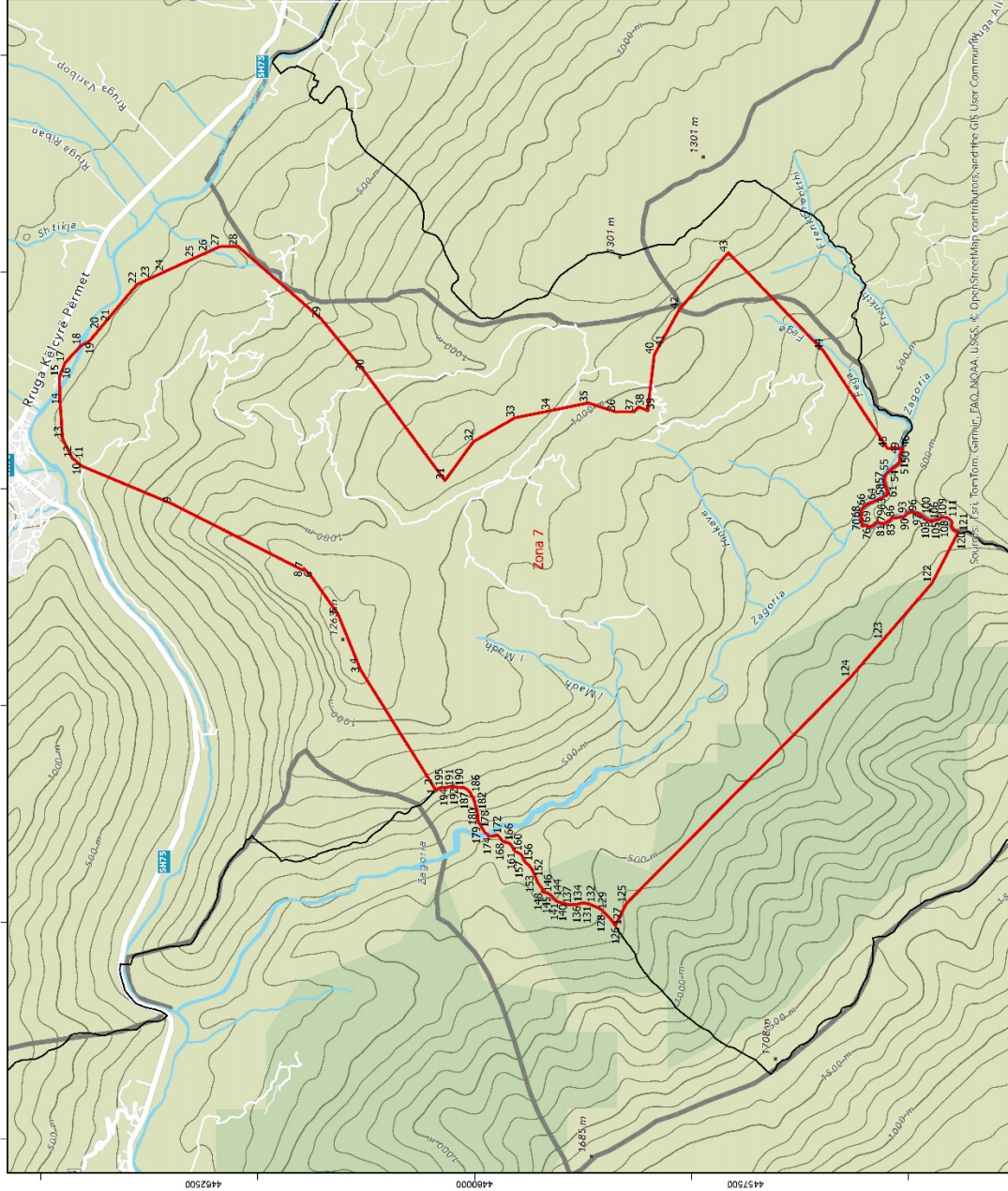
*Zona 6 ndodhet në territorin e Njësias Administrative Këlcyrë, me sipërfaqe prej 671 ha

**Sistemi Koordinativ: KRGJSH (Komiza Referuese Gjydoreske Shqiptare) EPSG 8970

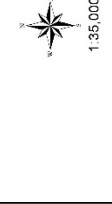
Zona 6
Njësia Administrative Këlcyrë

Nr.	Koordinata X	Koordinata Y	Nr.	Koordinata X	Koordinata Y	Nr.	Koordinata X	Koordinata Y
1	518167.52	4458915.94	47	518472.15	4462760.1	92	518163.71	4460266.3
2	518171.18	4458891.14	48	518941.12	4462254.04	93	518023.94	4460193.31
3	518174.39	4458869.43	49	518977.59	4462214.68	94	517979.9	4460154.7
4	518181.37	4458814.45	50	519014.07	4462175.32	95	517933.39	4460147.82
5	518185.98	4458780.62	51	519467.69	4461615.86	96	517918.41	4460162.47
6	518182.13	4458746.7	52	519634.62	4461521.92	97	517891.69	4460191.85
7	518176.11	4458716.98	53	519612.73	4461500.71	98	517884.1	4460200.2
8	518163.86	4458676.61	54	519590.84	4461479.51	99	517850.1	4460210.41
9	518155.9	4458632.05	55	519589.35	4461449.55	100	517826.84	4460208.03
10	518162.85	4458579.19	56	519555.87	4461423.88	101	517805.88	4460188.73
11	518182.52	4458524.36	57	519564.64	4461397.51	102	517763.97	4460150.14
12	518199.96	4458480.09	58	519629.77	4461349.54	103	517724.19	4460109.46
13	518210.91	4458448.45	59	519680.05	4461303.52	104	517686.49	4460073.04
14	518232.89	4458376.7	60	519707.89	4461275.25	105	517592.28	4459976.68
15	518254.97	4458296.48	61	519714.5	4461253.09	106	517571.57	4459936.22
16	518255.62	4458239.32	62	519704.16	4461230.74	107	517572.68	4459927.45
17	518254.07	4458188.48	63	519684.2	4461216.75	108	517575.05	4459908.73
18	518254.45	4458154.6	64	519648.36	4461202.58	109	517578.54	4459881.24
19	518273.68	4458140	65	519599.86	4461185.1	110	517568.48	4459834.54
20	518309.98	4458112.88	66	519549.12	4461178.17	111	517573.45	4459818.43
21	518329.59	4458064.4	67	519508.85	4461180.89	112	517581.16	4459793.46
22	518365.87	4458039.39	68	519495.38	4461155.33	113	517586.06	4459777.57
23	518391.58	4458012.16	69	519485.11	4461126.63	114	517631.12	4459725.14
24	518406.67	4457989.03	70	519443.71	4461136.75	115	517661.57	4459653.48
25	518406.98	4457961.51	71	519423.64	4461132.29	116	517719.82	4459558.85
26	518437.17	4457913.15	72	519390.94	4461121.33	117	517733.85	4459534.66
27	518439.45	4457911.55	73	519354.09	4461102.91	118	517744.19	4459516.84
28	518178.05	4457658.87	74	519322.44	4461093.03	119	517747.89	4459510.46
29	517653.86	4458110.94	75	519271.67	4461088.22	120	517749.42	4459493.14
30	517297.87	4458307.68	76	519218.84	4461079.15	121	517752.75	4459455.46
31	517234.84	4458342.1	77	519172.54	4461053.22	122	517757.48	4459411.05
32	516719.95	4458402.92	78	519112.76	4461002.78	123	517770.73	4459362.49
33	516754.9	4458485	79	519060.56	4460937.61	124	517792.34	4459324.62
34	516711.79	4458527.07	80	518990.29	4460841.69	125	517850.12	4459291.89
35	516709.54	4458696.65	81	518909.24	4460741.15	126	517883.98	4459272.72
36	516791.26	4458951.19	82	518819.41	4460632.15	127	517924.42	4459243.35
37	516720.54	4459301.31	83	518725.16	4460540.03	128	517967.24	4459212.25
38	516654.63	4459628.03	84	518691.48	4460522.71	129	518005.98	4459157.63
39	516436.84	4460007.93	85	518643.09	4460494.63	130	518029.6	4459128.25
40	516075.4	4460272.49	86	518556.55	4460470.36	131	518051.2	4459090.38
41	517080.34	4461014.07	87	518493.03	4460469.65	132	518072.71	4459060.98
42	517567.13	4461414.91	88	518397.63	4460479.16	133	518124.75	4458984.15
43	518237.8	4462182.81	89	518376.63	4460464.1	134	518153.54	4458959.67
44	518235.58	4462352.38	90	518337.64	4460353.55	135	518160.53	4458937.8
45	518185.05	4462461.98	91	518276.79	4460304.16	136	518167.52	4458915.94
46	518233.05	4462587.94						

ZONA ME PËRPARËSI ZHVILLIMIN E EKONOMISË MALORE
ZONA 7, NJËSIA ADMINISTRATIVE KËLCYRË, BASHKIA KËLCYRË, QARKU GJIROKASTËR



Njësia Administrative	Zona	Sipërfaqe (Ha)
Ballaban	Zona 1	6397
Sukë dhe Ballaban	Zona 2	4089
Sukë dhe Ballaban	Zona 3	1836
Dëshnicë, Sukë dhe Këlcyrë	Zona 4	2561
Dëshnicë, Sukë dhe Këlcyrë	Zona 5	6592
Këlcyrë	Zona 6	671
Këlcyrë	Zona 7	2515
Këlcyrë	Zona 8	32



- Legjendë**
- Zona me përparësi zhvillim e ekonomisë malore
 - Bashkia Këlcyrë
 - Ndërtesa
 - Izoipse
 - Kategoria e Rifjetit Rrugor
 - C. Rruge Inerurbane Dytësore
 - E. Rruge Urbane Dytësore
 - F. Rruge Lokale

*Zona 7 ndodhet në territorin e Njësise Administrative Këlcyrë, me sipërfaqe prej 2515 ha

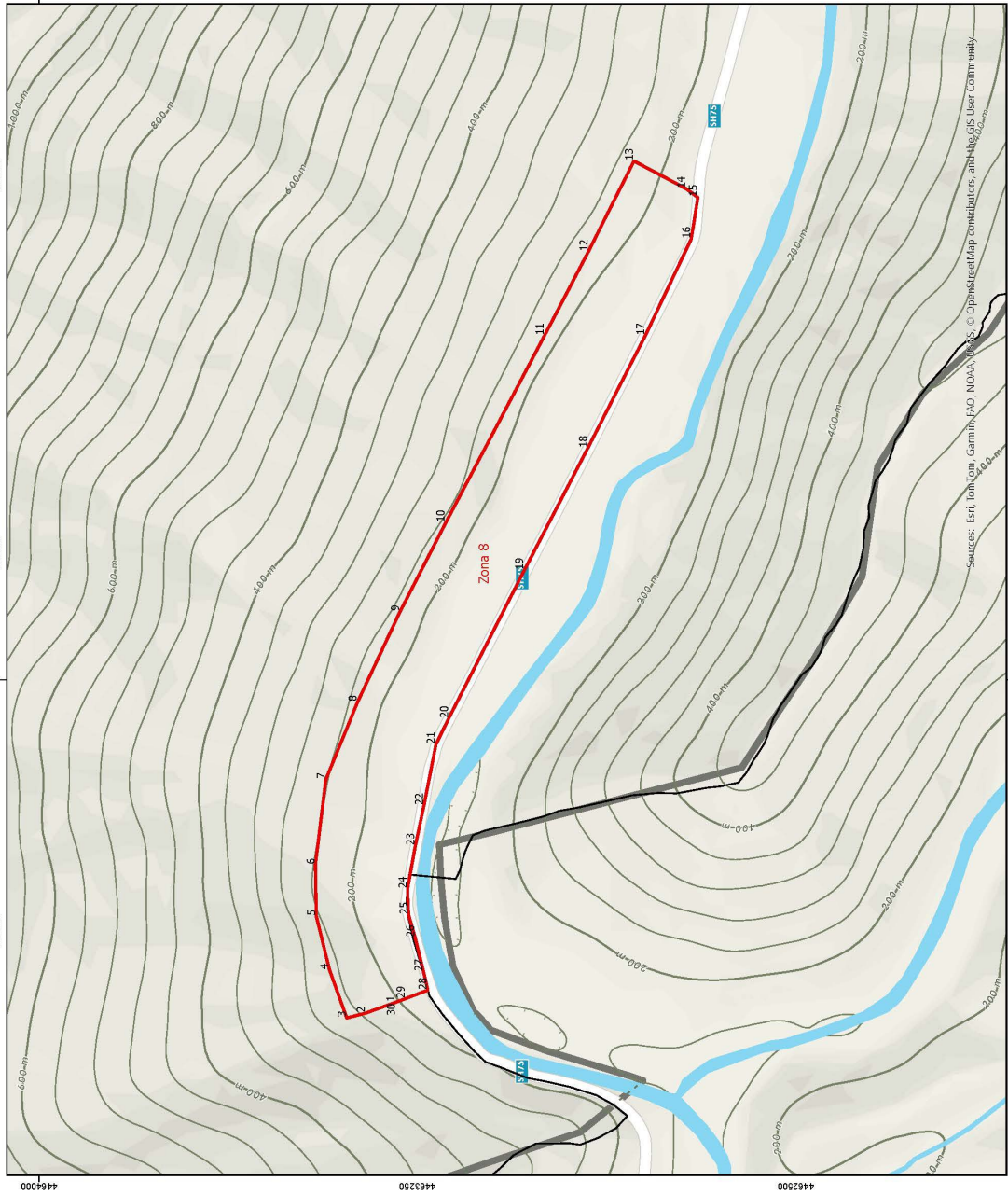
**Sistemi Koordinativ: KRGJSH (Komiza Referenese Gjendësake Shqiptare) EPSG 6870

Zona 7
Njësia Administrative Këlcyrë

Nr.	Koordinata X	Koordinata Y	Nr.	Koordinata X	Koordinata Y	Nr.	Koordinata X	Koordinata Y
1	513219.08	4460357.01	67	515813.2	4456429.55	133	512173.76	4458977.82
2	513257.16	4460380.82	68	515788.76	4456436.69	134	512175.04	4459004.84
3	514328.96	4461051.09	69	515752.78	4456435.22	135	512168.33	4459036.52
4	514374.58	4461069.58	70	515730.55	4456434.97	136	512161.71	4459060.27
5	514841.1	4461258.72	71	515672.71	4456426.58	137	512157.73	4459131.69
6	515174.16	4461493.58	72	515657.59	4456426.74	138	512159.32	4459131.71
7	515263.73	4461573.78	73	515658.91	4456403.46	139	512168.45	4459166.75
8	515248.42	4461584.69	74	515658.07	4456384.39	140	512176.05	4459197.01
9	515863.22	4462794.52	75	515650.79	4456373.31	141	512183.72	4459220.92
10	516210.23	4463624.36	76	515651.11	4456344.08	142	512192.98	4459244.85
11	516272.41	4463695.76	77	515661.9	4456326.2	143	512210.25	4459262.51
12	516280.06	4463708.96	78	515672.71	4456306.21	144	512229.11	4459280.19
13	516461.72	4463800.17	79	515685.57	4456292.59	145	512246.42	4459294.68
14	516767.79	4463821.46	80	515687.94	4456270.38	146	512266.7	4459326.67
15	517029.33	4463829.89	81	515679.66	4456253.35	147	512274.37	4459350.58
16	517064.76	4463815.9	82	515676.75	4456230.02	148	512280.44	4459376.06
17	517160.68	4463778.03	83	515685.45	4456208.94	149	512299.56	4459369.92
18	517321.31	4463629.64	84	515699.52	4456182.63	150	512331.05	4459394.1
19	517361.37	4463552.64	85	515712.43	4456163.72	151	512368.88	4459419.94
20	517468.41	4463462.66	86	515727.41	4456150.13	152	512406.83	4459434.66
21	517533.54	4463407.91	87	515727.71	4456123.66	153	512441.6	4459449.35
22	517885.24	4463112.29	88	515731.06	4456107.82	154	512482.67	4459468.87
23	517940.27	4462992.92	89	515737.67	4456085.66	155	512518.91	4459494.69
24	518000.06	4462863.23	90	515737.94	4456061.31	156	512550.29	4459528.39
25	518128.44	4462584.76	91	515740.27	4456042.28	157	512573.88	4459549.3
26	518185.05	4462461.98	92	515750.99	4456030.75	158	512611.84	4459562.44
27	518235.58	4462352.38	93	515767.08	4456011.88	159	512630.68	4459581.71
28	518237.8	4462182.81	94	515773.5	4456006.65	160	512641.55	4459604.06
29	517567.13	4461414.91	95	515783.33	4455979.24	161	512650.88	4459621.64
30	517080.34	4461014.07	96	515783.48	4455966.53	162	512669.72	4459640.91
31	516075.4	4460272.49	97	515782.63	4455947.47	163	512687.1	4459649.04
32	516436.84	4460007.93	98	515777.51	4455932.59	164	512710.74	4459665.19
33	516654.63	4459628.03	99	515771.41	4455910.28	165	512726.45	4459679.66
34	516720.54	4459301.31	100	515754.78	4455882.57	166	512737.3	4459703.61
35	516791.26	4458951.19	101	515738.02	4455866.5	167	512737.16	4459716.31
36	516709.54	4458696.65	102	515721.25	4455851.48	168	512737.07	4459724.25
37	516711.79	4458527.07	103	515708.84	4455824.88	169	512741.72	4459733.83
38	516754.9	4458485	104	515700.73	4455793.02	170	512755.84	4459749.87
39	516719.95	4458402.92	105	515703.06	4455773.99	171	512785.76	4459772.45
40	517234.84	4458342.1	106	515706.42	4455758.15	172	512804.58	4459793.3
41	517297.87	4458307.68	107	515708.75	4455739.11	173	512796.39	4459815.44
42	517653.86	4458110.94	108	515716.45	4455713.79	174	512791.34	4459840.8
43	518178.05	4457658.87	109	515737.87	4455691.8	175	512794.17	4459871
44	517271.11	4456782.16	110	515736.08	4455663.19	176	512808.36	4459880.69
45	516372.64	4456191.75	111	515728.95	4455637.7	177	512822.42	4459901.5
46	516373.31	4456051.53	112	515722.77	4455622.81	178	512857.08	4459925.71

47	516358.55	4456058.01	113	515709.17	4455607.83	179	512891.8	4459945.16
48	516328.62	4456071.15	114	515697.63	4455598.17	180	512939.13	4459972.69
49	516316.92	4456076.31	115	515684.96	4455595.91	181	512994.73	4459971.73
50	516284.09	4456077	116	515659.51	4455598.8	182	513028.01	4459978.46
51	516250.2	4456077.67	117	515645.7	4455602.88	183	513081.82	4459994.95
52	516236.31	4456089.16	118	515629.93	4455593.18	184	513134.09	4460006.66
53	516218.12	4456105.9	119	515615.34	4455572.89	185	513159.32	4460022.82
54	516181.61	4456151.01	120	515609.19	4455554.83	186	513190.94	4460035.88
55	516160.12	4456179.36	121	515600.92	4455536.73	187	513208.22	4460051.96
56	516129.07	4456209.71	122	515125.69	4455781.63	188	513225.48	4460071.21
57	516099.31	4456219.96	123	514599.52	4456237.23	189	513239.5	4460095.19
58	516058.92	4456221.84	124	514251.99	4456538.17	190	513243.74	4460141.3
59	516018.98	4456207.41	125	512170.5	4458599.77	191	513247.99	4460187.4
60	516000	4456200.84	126	511965.25	4458702.18	192	513249.24	4460217.59
61	515975.75	4456192.1	127	512011.37	4458731.42	193	513242.49	4460252.45
62	515939.69	4456196.99	128	512074.25	4458789.3	194	513242.13	4460284.21
63	515925.57	4456228.59	129	512107.23	4458821.44	195	513241.88	4460306.44
64	515895.22	4456291.78	130	512132.19	4458861.42	196	513227.19	4460341.22
65	515855.01	4456383.44	131	512155.37	4458918.85	197	513219.08	4460357.01
66	515834.59	4456409.67	132	512166.16	4458947.56			

ZONA ME PËRPARËSI ZHVILLIMIN E EKONOMISË MA LORE
ZONA 8, NJËSIA ADMINISTRATIVE KËLCYRË, BASHKIA KËLCYRË, QARKU GJIROKASTËR



Njësia Administrative	Zona	Sipërfaqe (Ha)
Ballaban	Zona 1	6397
Sukë dhe Ballaban	Zona 2	4089
Sukë dhe Ballaban	Zona 3	1836
Dëshnicë, Sukë dhe Këlcyrë	Zona 4	2561
Dëshnicë, Sukë dhe Këlcyrë	Zona 5	6592
Këlcyrë	Zona 6	671
Këlcyrë	Zona 7	2515
Këlcyrë	Zona 8	32



Legjendë

- Zona me përparësi zhvillimin e ekonomisë malore
- Bashkia Këlcyrë
- Ndërtësia
- Izopse
- Kategoritë e Rrjetit Rrugor
- C. Rruge Interurbane Dyësores

*Zona 8 rridhet në territorin e Njësise Administrative Këlcyrë, me sipërfaqe prej 32 ha

**Sistemi Koordinativ: KRGJSH (Komiza Referenca Gjendëzake Shiptare) EPSG 8970

Zona 8
Njësia Administrative Këlcyrë

Nr.	Koordinata X	Koordinata Y	Nr.	Koordinata X	Koordinata Y
1	511360.83	4463293.44	16	512873.95	4462707.35
2	511339.24	4463352.75	17	512682.79	4462798.19
3	511329.83	4463389.91	18	512459.83	4462912.04
4	511425.16	4463424.08	19	512217.08	4463038.24
5	511531.31	4463450.3	20	511924.06	4463187.69
6	511633.57	4463452.12	21	511872.09	4463213.22
7	511802.46	4463431.41	22	511750.78	4463237.11
8	511956.43	4463368.48	23	511671.59	4463253.99
9	512135.46	4463284.45	24	511585.35	4463269.57
10	512311.63	4463193.96	25	511534.28	4463267.47
11	512682.53	4462998.01	26	511489.27	4463254.38
12	512849.3	4462910.94	27	511422.01	4463237.89
13	513028.97	4462820.66	28	511385.05	4463229.38
14	512974.09	4462717.45	29	511368.11	4463273.46
15	512956.76	4462693.81	30	511360.83	4463293.44