

**VENDIM**  
**Nr. 238, datë 1.4.2026**

**PËR SHPALLJEN E DISA ZONAVE ME PËRPARËSI ZHVILLIMIN E  
EKONOMISË MALORE NË BASHKINË GRAMSH**

Në mbështetje të nenit 100 të Kushtetutës dhe të pikës 1, të nenit 4, të ligjit nr. 20/2025, “Për paketën e maleve”, me propozimin e ministrit të Shtetit për Pushtetin Vendor, Këshilli i Ministrave

**VENDOSI:**

1. Shpalljen “Zonë me përparësi zhvillimin e ekonomisë malore” të disa zonave në territorin e Bashkisë Gramsh, si më poshtë vijon:

a) Zona nr. 1, fshatrat Bicaj, Lenie, Grabovë e Poshtme, Valth, Sojnik dhe Bulçar, pjesë të njësive administrative Lenie, Kukur dhe Kodovjat, Bashkia Gramsh, qarku Elbasan, me sipërfaqe 5 500 (pesë mijë e pesëqind) ha, sipas hartës në sistemin KRGJSH;

b) Zona nr. 2, fshatrat Kalaj, Gribë dhe Kukur, pjesë të Njesisë Administrative Kukur, Bashkia Gramsh, qarku Elbasan, me sipërfaqe 2 151 (dy mijë e njëqind e pesëdhjetë e një) ha, sipas hartës në sistemin KRGJSH;

c) Zona nr. 3, fshatrat Skënderbegas, Sëmbërdhenj, Bletëz, Ermenj, Kotkë dhe Kullollas, pjesë të Njesisë Administrative Skënderbegas, Bashkia Gramsh, qarku Elbasan, me sipërfaqe 2 825 (dy mijë e tetëqind e njëzet e pesë) ha, sipas hartës në sistemin KRGJSH;

ç) Zona nr. 4, fshatrat Drizë dhe Cingar i Poshtëm, pjesë të Njesisë Administrative Pishaj, Bashkia Gramsh, qarku Elbasan, me sipërfaqe 195 (njëqind e nëntëdhjetë e pesë) ha, sipas hartës në sistemin KRGJSH;

d) Zona nr. 5, fshatrat Bërsnik i Sipërm dhe Posnovisht, pjesë të Njesisë Administrative Kodovjat, Bashkia Gramsh, qarku Elbasan, me sipërfaqe 1 186 (një mijë e njëqind e tetëdhjetë e gjashtë) ha, sipas hartës në sistemin KRGJSH;

dh) Zona nr. 6, fshatrat Kutërqar dhe Kodër Zgjupe, pjesë të Njesisë Administrative Sult, Bashkia Gramsh, qarku Elbasan, me sipërfaqe 1 293 (një mijë e dyqind e nëntëdhjetë e tre) ha, sipas hartës në sistemin KRGJSH;

e) Zona nr. 7, fshatrat Tervol dhe Vinë, pjesë të Njesisë Administrative Pishaj, Bashkia Gramsh, qarku Elbasan, me sipërfaqe 1 081 (një mijë e tetëdhjetë e një) ha, sipas hartës në sistemin KRGJSH;

ë) Zona nr. 8, fshati Qerret, pjesë e njësive administrative Pishaj, Bashkia Gramsh, qarku Elbasan, me sipërfaqe 239 (dyqind e tridhjetë e nëntë) ha, sipas hartës në sistemin KRGJSH;

f) Zona nr. 9, fshatrat Tunjë, Duzh, Lubinjë dhe Tunjë e Re, pjesë të Njesisë Administrative Tunjë, Bashkia Gramsh, qarku Elbasan, me sipërfaqe 1 535 (një mijë e pesëqind e tridhjetë e pesë) ha, sipas hartës në sistemin KRGJSH;

g) Zona nr. 10, fshati Fshat-Gramsh, pjesë e njësive administrative Pishaj, Bashkia Gramsh, qarku Elbasan, me sipërfaqe 298 (dyqind e nëntëdhjetë e tetë) ha, sipas hartës në sistemin KRGJSH;

gj) Zona nr. 11, fshatrat Zamshe, Shelcan dhe Snosëm, pjesë të njësive administrative Kukur dhe Kodovjat, Bashkia Gramsh, qarku Elbasan, me sipërfaqe 1 032 (një mijë e tridhjetë e dy) ha, sipas hartës në sistemin KRGJSH;

h) Zona nr. 12, fshati Jançe Mal, pjesë e njësive administrative Tunjë, Bashkia Gramsh, qarku Elbasan, me sipërfaqe 137 (njëqind e tridhjetë e shtatë) ha, sipas hartës në sistemin KRGJSH;

i) Zona nr. 13, fshati Sotirë, pjesë e njësisë administrative Kushovë, Bashkia Gramsh, qarku Elbasan, me sipërfaqe 494 (katërqind e nëntëdhjetë e katër) ha, sipas hartës në sistemin KRGJSH;

j) Zona nr. 14, fshati Grabovë e Sipërme, pjesë e njësisë administrative Lenie, Bashkia Gramsh, qarku Elbasan, me sipërfaqe 762 (shtatëqind e gjashtëdhjetë e dy) ha, sipas hartës në sistemin KRGJSH;

k) Zona nr. 15, fshati Holtas, pjesë e njësisë administrative Poroçan, Bashkia Gramsh, qarku Elbasan, me sipërfaqe 614 (gjashtëqind e katërbëdhjetë) ha, sipas hartës në sistemin KRGJSH;

l) Zona nr. 16, fshati Tervol, pjesë e njësisë administrative Pishaj, Bashkia Gramsh, qarku Elbasan, me sipërfaqe 611 (gjashtëqind e njëmbëdhjetë) ha, sipas hartës në sistemin KRGJSH.

2. Shtrirja, kufijtë dhe pikat e hyrjes e të daljes së këtyre zonave përcaktohen në hartën treguese, sipas sistemit KRGJSH, që i bashkëlidhet këtij vendimi.

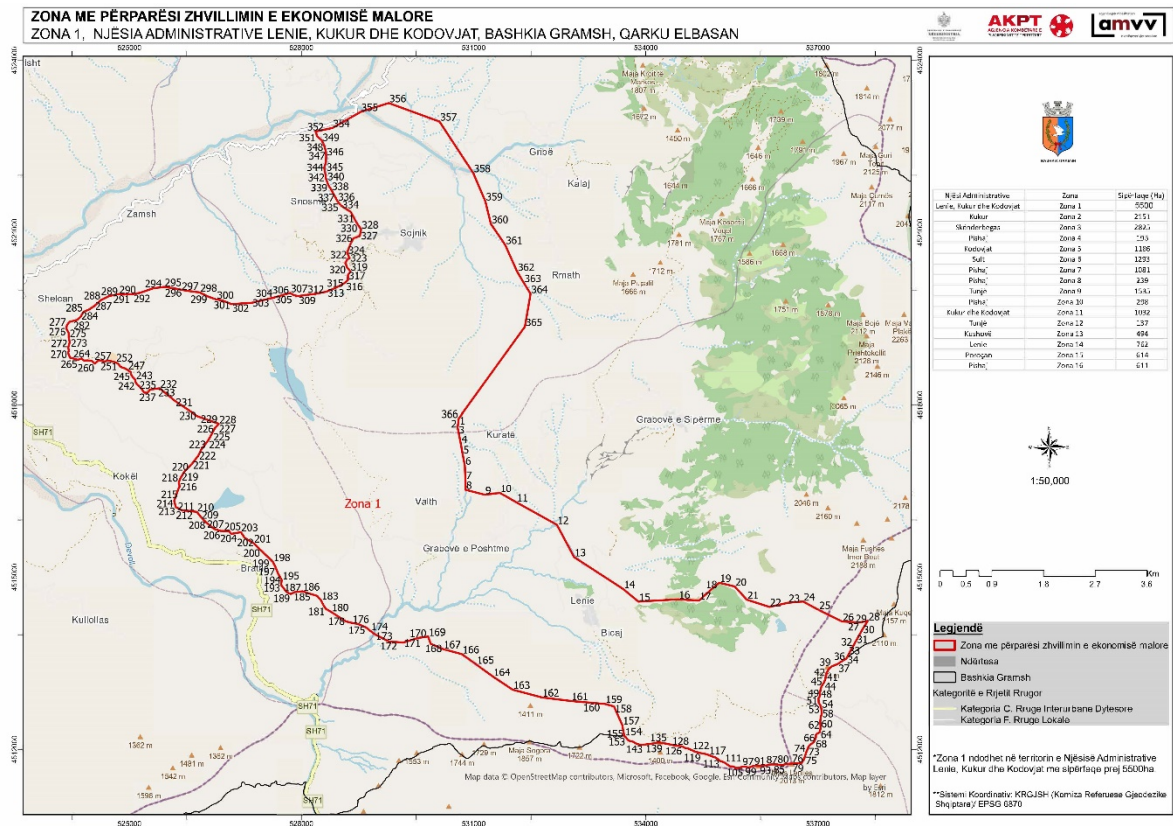
3. Llojet e aktiviteteve, që do të zhvillohen në këtë zonë, janë:

- a) të zhvillimit ekonomik;
- b) të zhvillimit industrial;
- c) të zhvillimit turistik.

4. Ngarkohen Ministria e Ekonomisë dhe Inovacionit, Agjencia Shtetërore e Kadastrës dhe Bashkia Gramsh për zbatimin e këtij vendimi.

Ky vendim hyn në fuqi pas botimit në Fletoren Zyrtare.

**KRYEMINISTËR**  
**Edi Rama**

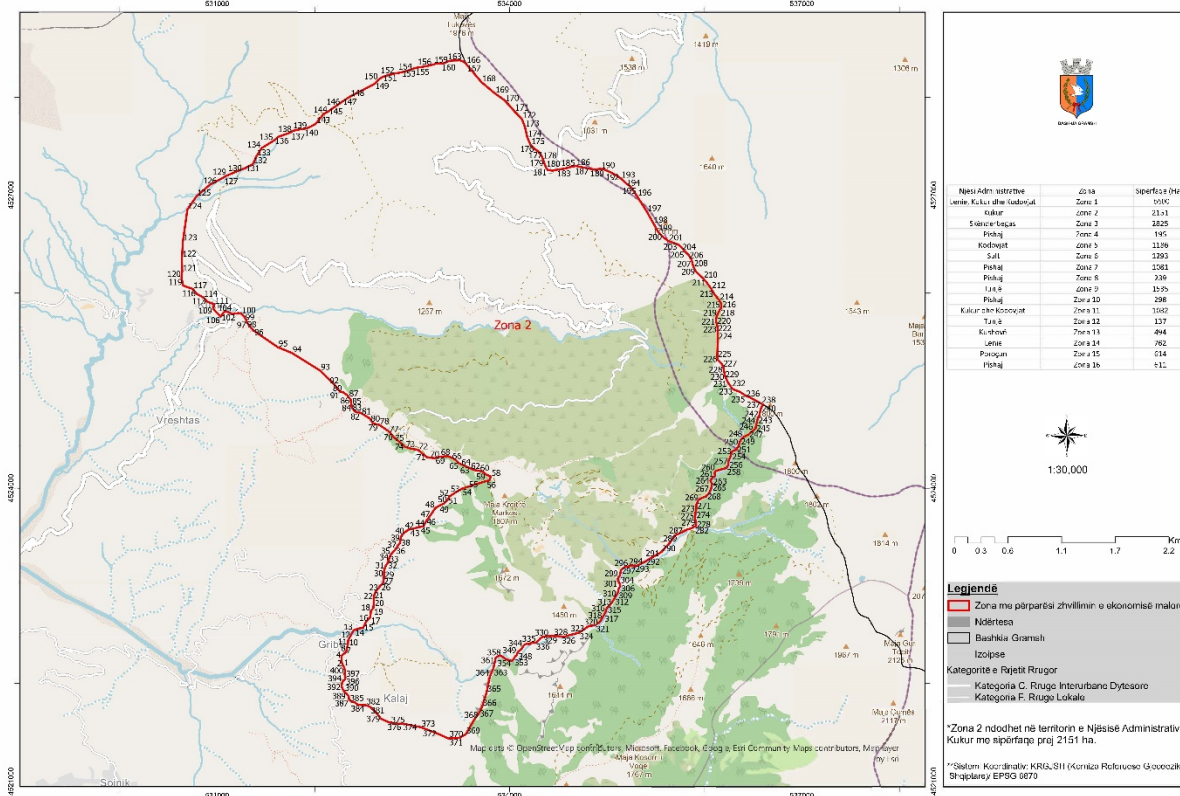


Zona 1								
Njësia Administrative Lenie, Kukur dhe Kodovjat								
Nr	Koordinata X	Koordinata Y	Nr	Koordinata X	Koordinata Y	Nr	Koordinata X	Koordinata Y
1	530739.64	4517763.34	225	526446.81	4517518.12	245	525028.75	4518531.97
2	530721.55	4517602.77	226	526486.56	4517593.99	246	525024.71	4518568.81
3	530727.26	4517583.63	227	526553.02	4517670.16	247	524969.3	4518607.24
4	530777.63	4517325.52	228	526557.29	4517675.05	248	524920.51	4518635.62
5	530809.87	4517144.81	229	526546.5	4517681.64	249	524871.88	4518650.25
6	530846.57	4516951.21	230	526179.93	4517809.5	250	524839.85	4518668.7
7	530858.04	4516701.28	231	525795.4	4518066.83	251	524803.13	4518716.74
8	530860.04	4516526.19	232	525528.01	4518287.05	252	524766.02	4518735.85
9	531194.61	4516439.85	233	525490.73	4518282.15	253	524705.79	4518753.24
10	531458.14	4516472.17	234	525429.01	4518274.38	254	524660.11	4518762.85
11	531743.44	4516309.27	123	534759.98	4512006.68	255	524628.19	4518771.16
12	532451.65	4515916.61	124	534731.25	4512019.06	256	524569.1	4518751.68
13	532751.29	4515353.14	125	534694.69	4512021.82	257	524503.1	4518766.84
14	533607.98	4514796.01	126	534643.55	4512049.83	258	524470.43	4518777.32
15	533872.02	4514577.34	127	534609.05	4512057.37	259	524444.62	4518757.5
16	534565.92	4514616.53	128	534570.6	4512063.55	260	524399.5	4518717.92
17	534928.97	4514595.65	129	534518.99	4512062.97	261	524346.19	4518765.32
18	535145.67	4514792.03	130	534489.77	4512071.9	262	524273.69	4518773.32
19	535281.99	4514906.18	131	534439.33	4512084.56	263	524208.38	4518770.81
20	535551.72	4514840.45	132	534363.72	4512099.58	264	524167.37	4518805.66
21	535760.75	4514611.38	133	534322.61	4512107.05	265	524105.81	4518783.77
22	536156.29	4514484.53	134	534280.17	4512114.51	266	524045.59	4518798.98
23	536480.74	4514557.03	135	534220.51	4512123.09	267	524008.35	4518812.68
24	536743.22	4514578.79	136	534190.14	4512117.45	268	523969.45	4518817.53
25	537013.88	4514431.75	137	534157.11	4512111.78	269	523942.28	4518877.26
26	537422.78	4514229.98	138	534129.4	4512104.85	270	523933.08	4518908.95
27	537729.47	4514214.71	139	534095.05	4512099.17	271	523946.77	4518947.95
28	537870.31	4514241.97	140	534039.53	4512093.24	272	523933.9	4518991.95
29	537870.09	4514241.64	141	534019.71	4512090.37	273	523961.03	4519091.16
30	537775.28	4514090.19	142	533972.15	4512083.21	274	523944.27	4519166.9
31	537662.5	4513886.55	143	533958.95	4512080.41	275	523943.3	4519251.65
32	537614.17	4513798.82	144	533920.57	4512079.97	276	523905.44	4519320.09
33	537529.73	4513645.56	145	533892.73	4512083.63	277	523904.91	4519366
34	537498.69	4513586.42	146	533852.88	4512096.41	278	523927.38	4519408.64
35	537489.69	4513578.89	147	533820.97	4512109.28	279	523955.27	4519440.75
36	537424.46	4513542.14	148	533794.29	4512127.5	280	523958.18	4519445.5
37	537346.7	4513490.43	149	533753.06	4512145.56	281	523960.09	4519444.33
38	537283.47	4513464.3	150	533734.53	4512145.35	282	524012.35	4519458.72
39	537234.99	4513444.69	151	533701.34	4512154.24	283	524089.38	4519478.92
40	537188.91	4513399.7	152	533679.93	4512175.17	284	524149.48	4519532.03
41	537151.52	4513335.74	153	533655.69	4512211.95	285	524200.92	4519618.15
42	537143.75	4513274.24	154	533628.98	4512232.82	286	524299.77	4519660.67
43	537129.51	4513223.26	155	533625.69	4512233.48	287	524387.4	4519719.62
44	537111.01	4513174.34	156	533625.45	4512234.75	288	524507.59	4519825.84
45	537090.2	4513142.34	157	533591.56	4512424.72	289	524653.03	4519896.48
46	537063.15	4513099.68	158	533447.36	4512749.39	290	524812.7	4519928.65
47	537048.86	4513052.93	159	533292.77	4512792.95	291	524912.11	4519921.51
48	537036.88	4512989.26	160	533056.87	4512812.93	292	525061.03	4519928.73
49	537039.56	4512940.59	161	532693.93	4512845.05	293	525182.2	4519949.43
50	537010.52	4512887.31	162	532190.14	4512907.29	294	525415.83	4520029.35
51	537013.07	4512849.23	163	531681	4513041.99	295	525605.95	4520053.59

52	537015.62	4512811.14	164	531338.5	4513269.23	296	525766.25	4520030.59
53	537041.44	4512775.43	165	531050.58	4513478.96	297	526023.39	4519983.86
54	537054.53	4512741.7	166	530794.7	4513661.86	298	526225.11	4519958.56
55	537055.45	4512735.48	167	530471.92	4513748.83	299	526372.18	4519885.74
56	537061.41	4512695.19	168	530253.32	4513841.51	300	526516.24	4519834.96
57	537070.63	4512629.65	169	530206.56	4513967.88	301	526615.75	4519819.54
58	537060.88	4512599.27	170	530030.08	4513943.21	302	526776.94	4519754.63
59	537050.18	4512565.89	171	529772.66	4513863.23	303	527129.31	4519775.1
60	537044.4	4512515	172	529518.63	4513883	304	527502.3	4519864.5
61	537040.65	4512472.6	173	529279.5	4514008.22	305	527526.5	4519870.3
62	537045.42	4512426.07	174	529202.75	4514064.9	306	527697.32	4519918.47
63	537046.09	4512366.78	175	529125.93	4514127.14	307	527802.46	4519948.12
64	537032.04	4512298.86	176	528986.02	4514186.8	308	527866.92	4519909.89
65	536989.94	4512277.2	177	528863.24	4514209.54	309	527942.53	4519893.35
66	536964.82	4512251.5	178	528772.01	4514232.63	310	528072.84	4519912.24
67	536965.3	4512209.16	179	528616.79	4514332.96	311	528118.3	4519917.55
68	536953.01	4512173.02	180	528517.67	4514396.8	312	528237.95	4519931.53
69	536930.2	4512130.4	181	528424.23	4514451.43	313	528437.63	4519971.51
70	536905.03	4512108.94	182	528384.56	4514512.24	314	528602.18	4520040.1
71	536863	4512080.93	183	528340.87	4514598.99	315	528749.2	4520120.09
72	536837.93	4512051	184	528271.28	4514678.02	316	528761.58	4520130.95
73	536817.33	4511999.94	185	528172.57	4514706.6	317	528809.51	4520172.99
74	536794.69	4511942.51	186	528016.06	4514756.79	318	528811.39	4520262.93
75	536776.31	4511883.01	187	527882.57	4514742.28	319	528854.23	4520321.43
76	536762.05	4511834.14	188	527814.25	4514709.94	320	528789.5	4520401.91
77	536716.26	4511763.73	189	527813.1	4514709.67	321	528765.5	4520471.25
78	536627.4	4511756.37	190	527764.12	4514730.31	322	528799.57	4520535.45
79	536546.43	4511753.86	191	527728.16	4514758.41	323	528837.05	4520556.18
80	536505.16	4511751.8	192	527699.19	4514798.48	324	528795.35	4520651.43
81	536470.28	4511746.64	193	527646.16	4514864.41	325	528846.07	4520762.53
82	536433.79	4511743.05	194	527653.58	4514942.9	326	528902.75	4520899.2
83	536386.3	4511729.8	195	527658.23	4514949.89	327	529018.26	4520944.03
84	536354.54	4511729.44	196	527588.5	4515074.35	328	529038.68	4521058.3
85	536325.95	4511729.11	197	527549.67	4515172.53	329	529033.17	4521070.82
86	536292.48	4511739.85	198	527502.18	4515267.7	330	528990.65	4521124.41
87	536241.66	4511739.27	199	527449.34	4515322.21	331	528935.49	4521219.75
88	536192.43	4511738.71	200	527293.91	4515471.27	332	528855.42	4521366.18
89	536140.06	4511734.94	201	527170.72	4515591.69	333	528781.92	4521409.95
90	536121.13	4511723.6	202	527010.08	4515688.48	334	528692.01	4521471.11
91	536097.35	4511720.15	203	526945.15	4515786.36	335	528654.8	4521513.79
92	536057.65	4511719.7	204	526777.24	4515758.34	336	528629	4521543.38
93	536040.22	4511716.33	205	526739.01	4515804.31	337	528591.68	4521615.95
94	536011.7	4511709.65	206	526593.93	4515808.46	338	528514.37	4521757.01
95	535976.73	4511712.43	207	526477.49	4515844.84	339	528467.58	4521829.47
96	535933.84	4511713.53	208	526339.9	4515956.39	340	528442.45	4521899.47
97	535892.55	4511713.06	209	526245.97	4516053.94	341	528424.34	4521946.58
98	535864	4511709.56	210	526178.27	4516140.19	342	528419.57	4522008.71
99	535832.39	4511696.49	211	526062.06	4516156.27	343	528406.78	4522063.98
100	535811.81	4511689.9	212	525922.72	4516166.28	344	528397.85	4522135.53
101	535789.6	4511688.06	213	525808.92	4516225.89	345	528425.29	4522218.3
102	535760.96	4511692.5	214	525781.59	4516332.9	346	528430.74	4522333.26
103	535729.11	4511700.08	215	525849.02	4516525.11	347	528425.76	4522414.31
104	535684.66	4511697.98	216	525870.54	4516576.95	348	528396.16	4522520.76
105	535613.42	4511678.11	217	525877.39	4516580.54	349	528353.24	4522609.49

106	535565.76	4511679.16	218	525862	4516658.68	350	528269.93	4522684.24
107	535528.97	4511702.56	219	525895.91	4516737.39	351	528258.59	4522730.07
108	535466.98	4511706.62	220	525958.52	4516842.52	352	528246.06	4522762.37
109	535442.98	4511722.23	221	526093.28	4516980.38	353	528244.75	4522765.46
110	535399.74	4511753.5	222	526201.9	4517120.85	354	528540.36	4522824.01
111	535369.33	4511773.8	223	526258.61	4517234.62	355	529031.01	4523104.38
112	535334.23	4511787.7	224	526372.93	4517383.85	356	529521.66	4523258.59
113	535300.78	4511796.84	235	525358.5	4518262.98	357	530404.82	4522936.16
114	535251.1	4511835.98	236	525339.38	4518236.27	358	530993.6	4522038.98
115	535211.11	4511860.94	237	525316.73	4518209.52	359	531203.88	4521548.33
116	535142.55	4511883.98	238	525258.44	4518210.62	360	531302.06	4521149.47
117	535094.68	4511904.08	239	525220.71	4518266.7	361	531549.82	4520787.99
118	535035.7	4511922.47	240	525175.97	4518319.17	362	531758.98	4520320.44
119	534967.27	4511934.4	241	525129.55	4518362.79	363	531875.87	4520123.58
120	534897.18	4511952.66	242	525104	4518402.63	364	531992.75	4519932.87
121	534857.37	4511961.73	243	525105.08	4518434.47	365	531894.32	4519360.75
122	534811.05	4511985.03	244	525055.3	4518486.7	366	530739.64	4517763.34

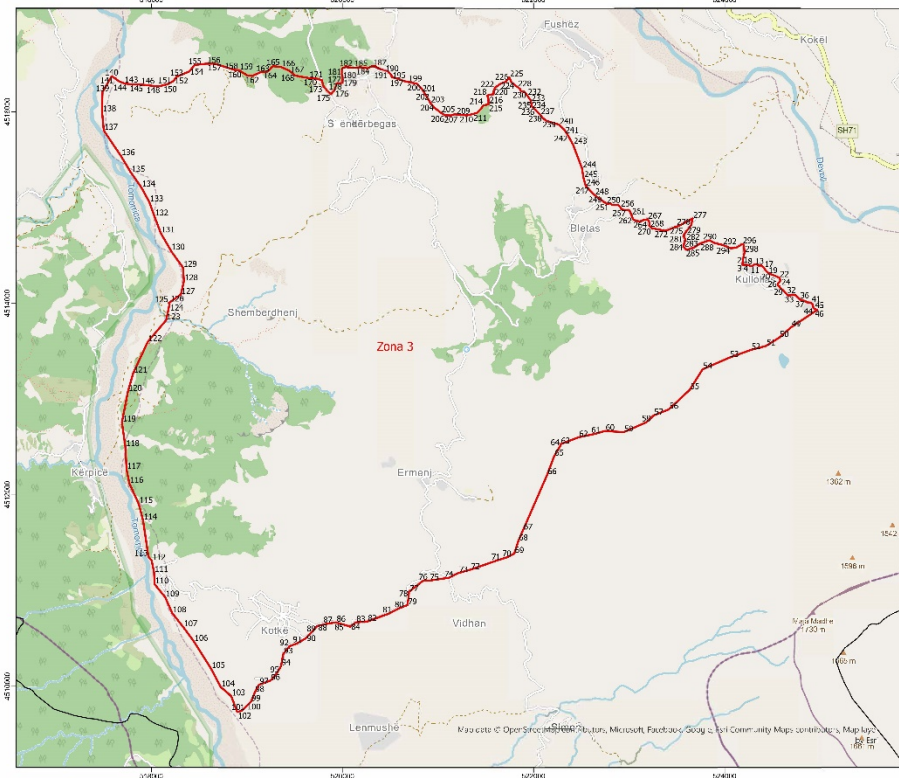
**ZONA ME PËRPARËSI ZHVILLIMIN E EKONOMISË MALORE**  
**ZONA 2. NJËSIA ADMINISTRATIVE KUKUR, BASHKIA GRAMSH, QARKU ELBASAN**



Zona 2											
Njësia Administrative Kukur											
Nr.	Koordinata X	Koordinata Y	Nr.	Koordinata X	Koordinata Y	Nr.	Koordinata X	Koordinata Y	Nr.	Koordinata X	Koordinata Y
1	532294.88	4522175.57	102	531186.48	4525789.57	203	535726.95	4526495.09	304	535129.35	4523022.34
2	532286.8	4522190.17	103	531155.41	4525782.86	204	535761.13	4526469.01	305	535134.12	4523005.24
3	532277.45	4522217.19	104	531111.3	4525804.6	205	535795.5	4526425.99	306	535134.26	4522993.51
4	532275.9	4522254.47	105	531075.63	4525809.92	206	535837.25	4526386.24	307	535126.93	4522984.57
5	532273.31	4522282.7	106	531033.62	4525758.58	207	535867.45	4526337.88	308	535117.68	4522967.59
6	532299.06	4522304.46	107	531020.1	4525773.68	208	535885.18	4526269.26	309	535111.7	4522940.64
7	532312.44	4522315.55	108	530984.09	4525809.51	209	535912.22	4526218.74	310	535104.46	4522923.4
8	532322.57	4522323.95	109	530957.01	4525842.26	210	535986.07	4526149.7	311	535094.7	4522902.13
9	532336.58	4522384.01	110	530966.27	4525866.52	211	536023.64	4526104.6	312	535078.1	4522878.21
10	532340.86	4522405.53	111	530971.16	4525884.38	212	536068.82	4526042.65	313	535054.26	4522836.93
11	532342.7	4522441.72	112	530892	4525912.72	213	536099.07	4525990.05	314	535024.74	4522800.41
12	532373.69	4522499.71	113	530892.28	4525915.52	214	536151.71	4525923.95	315	534996.47	4522771.38
13	532396.86	4522543.02	114	530855.62	4525956.05	215	536170.08	4525891.34	316	534984.85	4522733.98
14	532441.6	4522562.13	115	530823.65	4525972.57	216	536172.42	4525871.25	317	534968.67	4522702.81
15	532497.13	4522571.49	116	530788.66	4525992.04	217	536170.56	4525848.99	318	534956.4	4522681.67
16	532525.89	4522631.81	117	530748.35	4526042.24	218	536158.62	4525832.61	319	534935.88	4522644.57
17	532571.13	4522682.51	118	530686.53	4526062.39	219	536135.28	4525786.12	320	534914.46	4522624.78
18	532575.9	4522742.56	119	530649.05	4526078.07	220	536120.87	4525749.95	321	534879.85	4522598.56
19	532601.71	4522774.49	120	530632.98	4526157.47	221	536117.11	4525708.62	322	534808.07	4522578.96
20	532606.5	4522833.45	121	530639.87	4526218.18	222	536129.15	4525673.81	323	534776.92	4522563.87
21	532605.02	4522867.25	122	530638.22	4526362.15	223	536134.96	4525628.35	324	534711.79	4522520.54
22	532604.71	4522894.51	123	530647.69	4526528.99	224	536136.21	4525519.31	325	534617.12	4522497.12
23	532627.06	4522942.76	124	530693.26	4526851.6	225	536129.81	4525338.18	326	534570.52	4522481.23
24	532626.56	4522943.95	125	530786.43	4526989.09	226	536138.58	4525311.81	327	534505.56	4522483.98
25	532626.75	4522944.04	126	530925.27	4527108.14	227	536181.45	4525266.77	328	534448.96	4522488.92
26	532673.64	4523001.72	127	531064.91	4527181.78	228	536193.45	4525235.14	329	534382.56	4522485.66
27	532701.08	4523027.34	128	531065.62	4527184.36	229	536202.49	4525185.48	330	534362.3	4522481.71
28	532708.86	4523070.74	129	531099.07	4527201.57	230	536210.38	4525147.5	331	534332.34	4522475.65
29	532710.77	4523116.5	130	531182.18	4527236.6	231	536238.58	4525085.3	332	534313.64	4522460.85
30	532711.32	4523153.5	131	531285.67	4527278.69	232	536273.02	4525035.93	333	534300.94	4522446.41
31	532725.37	4523201.35	132	531365.32	4527318.8	233	536298.73	4525009.76	334	534285.08	4522433.07
32	532741.18	4523223.91	133	531401.9	4527399.33	234	536360.98	4524986.62	335	534274.62	4522422.09
33	532756.43	4523251.83	134	531455.48	4527483.46	235	536421.2	4524947.63	336	534264.39	4522416.54
34	532766.22	4523289.41	135	531578.71	4527558.84	236	536469.09	4524927	337	534247.52	4522416.34
35	532781.9	4523322.19	136	531627.84	4527599.61	237	536524.49	4524896.92	338	534232.61	4522419.89
36	532825.17	4523368.92	137	531752.89	4527643.49	238	536583.08	4524865.83	339	534218.35	4522416.3
37	532847.65	4523402.75	138	531773.71	4527659.81	239	536601.75	4524855.69	340	534211.04	4522405.35
38	532876.39	4523442.99	139	531848.14	4527675.85	240	536581.68	4524823.79	341	534193.89	4522404.87
39	532882.16	4523492.2	140	531890.1	4527679.01	241	536571.16	4524789.85	342	534175.55	4522408.09
40	532894.96	4523522.03	141	531927.51	4527690.16	242	536561.84	4524746.11	343	534151.67	4522403.38
41	532923.37	4523548.64	142	531963.52	4527705.77	243	536544.79	4524711.01	344	534136.72	4522378.48
42	532963.92	4523576.84	143	532011.45	4527734.02	244	536532.26	4524661.78	345	534122.7	4522353.72
43	533006.19	4523583.16	144	532093.49	4527835.46	245	536523	4524612.58	346	534105.99	4522340.09
44	533062.42	4523601.81	145	532135.43	4527857.04	246	536505.71	4524598.21	347	534090.1	4522329.05
45	533114.42	4523608.73	146	532223.93	4527914.61	247	536448.46	4524549.55	348	534083.37	4522317.25
46	533138.21	4523656.2	147	532280.04	4527954.56	248	536395.31	4524522.77	349	534073.81	4522302.55
47	533189.48	4523726.38	148	532361.88	4528008.23	249	536366.24	4524489.71	350	534073.11	4522288.82
48	533235.89	4523796.01	149	532611.59	4528137.63	250	536348.29	4524437.15	351	534062.02	4522283.54
49	533274.54	4523820.3	150	532653.29	4528180.29	251	536324.76	4524396.52	352	534051.31	4522270.27
50	533326.33	4523844.73	151	532693.23	4528208.55	252	536286.05	4524380.31	353	534042.65	4522252.44
51	533359.09	4523874.31	152	532781.1	4528238.32	253	536283.94	4524380.04	354	534023.7	4522230.92
52	533381	4523915.44	153	532886.36	4528255.82	254	536277.61	4524363.79	355	533983.37	4522241.18
53	533436.55	4523952.08	154	532958.03	4528275.81	255	536264.67	4524323.43	356	533956.89	4522251.6
54	533510.01	4523996.23	155	533030.6	4528301.57	256	536244.22	4524274.94	357	533939.3	4522265.7
55	533683.77	4524050.64	156	533161.7	4528323.2	257	536244.16	4524240.98	358	533915.89	4522281.07
56	533759.54	4524074.08	157	533231.48	4528341.26	258	536223.54	4524207.68	359	533893.95	4522284.84
57	533791.55	4524080.38	158	533235.07	4528344.22	259	536157.17	4524190.39	360	533866.85	4522271.58
58	533806.53	4524120.95	159	533267.65	4528346.14	260	536113.97	4524177.83	361	533856.21	4522261.2
59	533758.77	4524141.79	160	533298.32	4528346.49	261	536103.46	4524158.95	362	533855.94	4522258.6
60	533729.48	4524167.6	161	533330.65	4528351.98	262	536108.32	4524124.6	363	533832.34	4522150.72
61	533686.5	4524180.74	162	533367.94	4528369.45	263	536082.58	4524110.01	364	533797.35	45221073.06
62	533635.33	4524187.45	163	533408.75	4528378.44	264	536059.69	4524079.36	365	533763.37	4521907.11
63	533596.68	4524205.5	164	533492.25	4528379.39	265	536077.5	4524045.61	366	533718.11	4521763.11
64	533548.25	4524227.34	165	533528.2	4528366.17	266	536067.76	4523998.58	367	533683.03	4521693.72
65	533484.65	4524253.95	166	533552.58	4528347.11	267	536050.36	4523957.28	368	533639.52	4521638.04
66	533446.22	4524290.01	167	533556.52	4528338.04	268	536018.17	4523919.83	369	533550.23	4521482.5
67	533408.7	4524313.16	168	533712.13	4528155.58	269	535947.47	4523890.42	370	533487.19	4521445.91
68	533365.17	4524330.15	169	533847.9	4528041.72	270	535929.88	4523865.2	371	533371.37	4521439.07
69	533288.43	4524324.71	170	533946.11	4527971.91	271	535916.81	4523836.46	372	533257.66	4521490.2

70	533231.58	4524308.85	171	534050.09	4527859.8	272	535913.69	4523771.7	373	533088.6	4521554.49
71	533148.57	4524320.07	172	534125.09	4527782.31	273	535905.94	4523754.67	374	532903.5	4521591.82
72	533061.05	4524393.59	173	534156.74	4527700.08	274	535906.22	4523730.66	375	532854.32	4521590.54
73	532977.99	4524409.37	174	534181.25	4527593.42	275	535903.58	4523711.18	376	532805.79	4521596.49
74	532925.32	4524427.02	175	534214.96	4527515.46	276	535901.16	4523697.71	377	532763.75	4521603.97
75	532869.25	4524476.56	176	534257.81	4527472.53	277	535907.51	4523667.76	378	532727.4	4521620.19
76	532810.9	4524525.32	177	534291.94	4527450.69	278	535912.94	4523642.94	379	532679.42	4521641.34
77	532757.74	4524586.3	178	534333.89	4527392.93	279	535913.51	4523641.85	380	532639.77	4521692.97
78	532661.96	4524650.6	179	534355.8	4527328.6	280	535913.57	4523613.81	381	532567.38	4521760.86
79	532597.92	4524665.08	180	534373.26	4527283.27	281	535913.56	4523613.78	382	532524.51	4521777.73
80	532566.17	4524715.66	181	534389.42	4527259.1	282	535898.48	4523606.75	383	532481.83	4521777.97
81	532514.11	4524746.24	182	534439.27	4527251.2	283	535880.52	4523601.97	384	532440.54	4521784.01
82	532469.71	4524773.11	183	534479.41	4527260.13	284	535871.38	4523593.18	385	532404.08	4521809.63
83	532416.35	4524784.67	184	534559.74	4527271.63	285	535833.51	4523579.48	386	532376.54	4521813.66
84	532381.7	4524822.29	185	534633.63	4527291.54	286	535828.27	4523581.14	387	532351.69	4521836.52
85	532375.1	4524867.84	186	534679.06	4527300.52	287	535785.25	4523564.48	388	532349.15	4521869.04
86	532367.61	4524911.09	187	534739.56	4527327.45	288	535698.76	4523517.99	389	532327.88	4521894.12
87	532347.01	4524930.63	188	534843.55	4527267.46	289	535645.06	4523444.09	390	532303.02	4521917.7
88	532338.44	4524948.78	189	534885.93	4527264.77	290	535555.85	4523345.92	391	532289.02	4521940.69
89	532286.31	4524985.44	190	534933.51	4527270.61	291	535464.42	4523292.04	392	532275.73	4521964.41
90	532259.67	4524988.18	191	534974.9	4527262.61	292	535389.92	4523248.58	393	532276.27	4521980.33
91	532258.61	4524988.08	192	535054.72	4527226.46	293	535281.44	4523196.21	394	532283.1	4522015.85
92	532201.33	4525062.11	193	535141.1	4527172.39	294	535269.95	4523208.93	395	532293.06	4522029.71
93	532055.9	4525204.26	194	535190.35	4527125.31	295	535240.44	4523204.26	396	532311.03	4522040.04
94	531766.22	4525384.71	195	535243.73	4527086.74	296	535179.21	4523193.34	397	532315.1	4522063.23
95	531621.73	4525444.32	196	535308.37	4526989.01	297	535140.38	4523160.51	398	532306.05	4522096.4
96	531371.55	4525615.14	197	535409.74	4526828.17	298	535132.35	4523105.62	399	532311.41	4522133.35
97	531304.08	4525697.27	198	535475.67	4526710.34	299	535118.58	4523090.67	400	532298.09	4522172.43
98	531300.57	4525717.96	199	535522.15	4526627.22	300	535109.67	4523075.91	401	532294.88	4522175.57
99	531278.33	4525754.79	200	535571.48	4526572.73	301	535113.2	4523047.91			
100	531247.5	4525786.46	201	535631.62	4526528.55	302	535112.96	4523047.75			
101	531219.49	4525794.4	202	535699.31	4526505.37	303	535119.45	4523038.53			

**ZONA ME PËRPARËSI ZHVILLIMIN E EKONOMISË MALORE**  
**ZONA 3, NJËSIA ADMINISTRATIVE SKËNDERBEGAS, BASHKIA GRAMSH, QARKU ELBASAN**



SHQIPËRI

Njësia Administrative	Emri	Sipërfaqja (ha)
Emri, Kultur dhe Kodësi/ut	Zona 1	6000
Kultur	Zona 7	2711
Skënderbegas	Zona 8	2020
Rrëthaj	Zona 11	125
Kolonjes	Zona 2	1185
Selit	Zona 6	1253
Nishaj	Zona 7	1041
Nishaj	Zona 8	239
Tërë	Zona 9	1555
Rrëthaj	Zona 10	298
Kultur dhe Kodësi/ut	Zona 11	1032
Leçit	Zona 12	147
Durrës	Zona 13	444
Prishtinë	Zona 14	982
Prishtinë	Zona 15	431
Rrëthaj	Zona 16	611

1:30,000

**Legjendë**

- Zona me përparësi zhvillimit e ekonomisë malore
- Ndërtesa
- Bashkia Gramsh
- Izopolje
- Kategorië e Rrjetit Rrugor
  - Kategorië C: Rruge Interurbane Dytësore
  - Kategorië F: Rruge Lokale

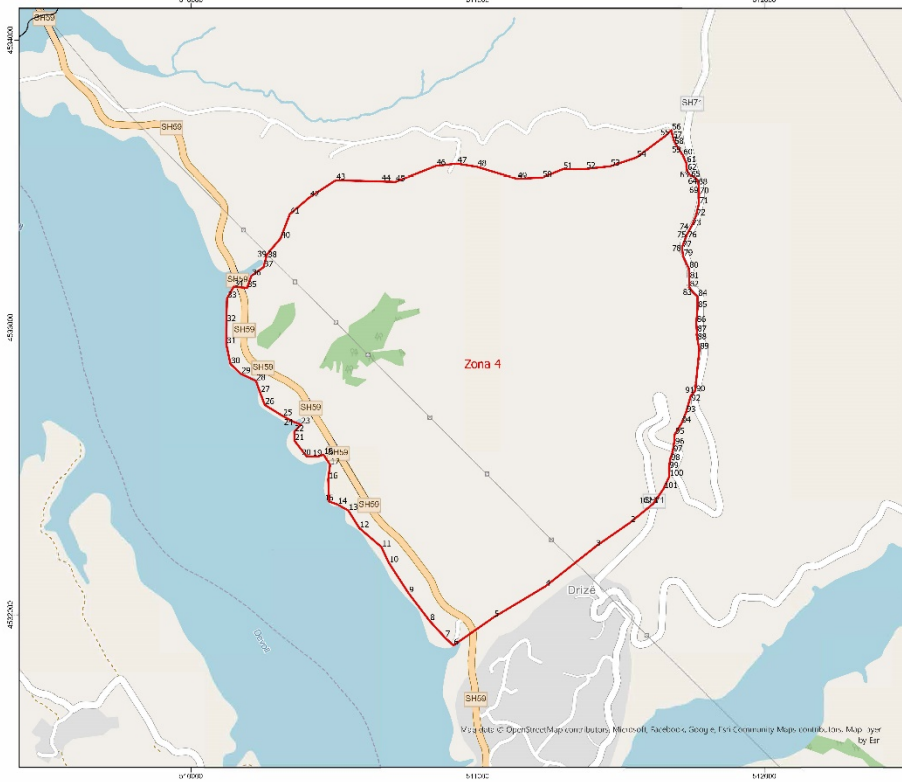
\*\*Zona 3 ndodhet në territorin e Njësia Administrative Skënderbegas me sipërfaqe prej 2825 ha.


\*\*Sistemi Koordinativ: KRGJSH (Koriza Referueses Gjendëshe Shqiptare) EPSG:6870

Zona 3								
Njësia Administrative Skënderbegas								
Nr.	Koordinata X	Koordinata Y	Nr.	Koordinata X	Koordinata Y	Nr.	Koordinata X	Koordinata Y
1	524187	4514419.51	101	518942.06	4509745.45	201	520826.36	4516244.43
2	524186.85	4514419.31	102	518898.79	4509733.64	202	520856.6	4516197.25
3	524185.76	4514406.22	103	518836.21	4509897.72	203	520920.78	4516091.05
4	524191.71	4514403.17	104	518725.84	4509991.51	204	520964.1	4516042.84
5	524201.36	4514403.91	105	518623.84	4510185.19	205	521030.03	4515991.31
6	524205.66	4514404.1	106	518444.78	4510468.28	206	521071.9	4515965.65
7	524219.72	4514404.74	107	518333.76	4510619.09	207	521134.9	4515962.81
8	524235.62	4514403.36	108	518218.05	4510765.09	208	521171.59	4515975.11
9	524252.79	4514399.51	109	518144.88	4510930.58	209	521241.75	4515969.97
10	524260.94	4514394.93	110	518034.02	4511067.13	210	521303.6	4515963.54
11	524265.43	4514389.96	111	518027.86	4511190.62	211	521366.4	4515978.52
12	524289.43	4514392.74	112	518003.5	4511313.38	212	521407.23	4515989.25
13	524309.81	4514405.9	113	517968.95	4511356.28	213	521438.01	4516020.75
14	524331.8	4514411.47	114	517912.35	4511735.81	214	521475.91	4516068.38
15	524352.51	4514395.74	115	517867.64	4511906.38	215	521527.38	4516078.7
16	524384.44	4514396.1	116	517770.17	4512119.12	216	521528.56	4516103.53
17	524408.24	4514375.84	117	517739.98	4512266.09	217	521526.75	4516133.68
18	524429.13	4514344.91	118	517727.77	4512503.56	218	521514.67	4516168.58
19	524449.13	4514324.61	119	517691.59	4512759.77	219	521540.37	4516176.66
20	524485.41	4514303.61	120	517754.49	4513078.89	220	521581.19	4516181.99
21	524524.5	4514289.45	121	517809.34	4513269.6	221	521582.29	4516213.64
22	524572.43	4514268.59	122	517962.41	4513599.25	222	521596.45	4516251.75
23	524583.44	4514241.46	123	518154.68	4513824.79	223	521654.87	4516292.32
24	524584.06	4514241.14	124	518190.74	4513996.28	224	521710.6	4516312.91
25	524574.19	4514225.66	125	518182.35	4514004.82	225	521745.22	4516358.78
26	524554.69	4514202.63	126	518194.16	4514013.05	226	521745.59	4516357.9
27	524558.66	4514187.47	127	518308.82	4514093.43	227	521768.46	4516306.18
28	524573.97	4514178.52	128	518340.67	4514233.7	228	521832.14	4516256.78
29	524581.01	4514161.11	129	518329.92	4514376.52	229	521860.38	4516236.27
30	524609.38	4514140.14	130	518203.23	4514551.48	230	521864.5	4516216.37
31	524628.63	4514119.83	131	518097.76	4514732.77	231	521904.99	4516207.58
32	524644.02	4514103.28	132	518031.88	4514908.42	232	521933.66	4516168.98
33	524660.98	4514082.94	133	517978.49	4515056.84	233	521968.78	4516118.77
34	524711.11	4514088.08	134	517894.61	4515210.99	234	521975.48	4516086.24
35	524740.02	4514086.12	135	517786.41	4515364.87	235	521985.11	4516052.29
36	524783.81	4514047.08	136	517681	4515540.07	236	522019.51	4516022.99
37	524797.62	4514035.84	137	517501.57	4515805.67	237	522068.29	4515970.02
38	524812.13	4514030.68	138	517484.15	4516000.12	238	522094.93	4515938.21
39	524844.14	4514024.2	139	517487.91	4516203.94	239	522128.84	4515909.4
40	524855.67	4514012.93	140	517583.92	4516369.79	240	522267.26	4515866.34
41	524902.13	4514005.85	141	517613.96	4516352.5	241	522323.58	4515811.29
42	524917.46	4513995.38	142	517660.6	4516317.95	242	522365.18	4515744.94
43	524922.99	4513977.2	143	517714.27	4516296.24	243	522412.57	4515658.23
44	524927.82	4513953.68	144	517750.21	4516290.27	244	522506.36	4515410.55
45	524939.35	4513943.17	145	517807.69	4516283.75	245	522522.35	4515310.49
46	524968.36	4513932.85	146	517886.62	4516283.85	246	522545.6	4515225.36
47	524970.5	4513932.88	147	517940.11	4516278.08	247	522588.75	4515179.83
48	524959.31	4513925.91	148	518019.14	4516269.42	248	522639.45	4515129.31
49	524693.67	4513749.52	149	518072.62	4516263.65	249	522723.37	4515067.49
50	524570.2	4513641.66	150	518120.33	4516274.56	250	522763.59	4515039.72
51	524431.29	4513554.91	151	518173.6	4516287.92	251	522790.21	4515040.97

52	524273.6	4513513.58	152	518233.8	4516322.89	252	522804.61	4515045.7
53	524046.42	4513431.91	153	518263.61	4516365.49	253	522819.26	4515027.61
54	523768	4513310.12	154	518394.96	4516419.64	254	522857.31	4515025.01
55	523633.57	4513095.69	155	518454.51	4516488.45	255	522886.95	4515026.1
56	523413.86	4512892.45	156	518576.99	4516501.52	256	522906.97	4515004.28
57	523256.42	4512829.83	157	518660.68	4516502.47	257	522918.6	4514984.64
58	523178.15	4512758.98	158	518872.13	4516436.06	258	522939.99	4514975.76
59	522942.09	4512655.92	159	518917	4516434.08	259	522981.08	4514973.19
60	522747.29	4512668.91	160	518952.15	4516410.81	260	523005.48	4514966.63
61	522650.29	4512640.43	161	519003.59	4516379	261	523023.46	4514923.49
62	522468.24	4512601.86	162	519054.73	4516373.36	262	523037.57	4514886.39
63	522280.49	4512529.77	163	519136.53	4516410.42	263	523047.64	4514870.54
64	522281.33	4512516.12	164	519214.91	4516418.79	264	523080.46	4514859.51
65	522215.01	4512404.32	165	519274.06	4516475.52	265	523110.17	4514854.53
66	522141.2	4512208.83	166	519358.88	4516466.52	266	523152.58	4514869.46
67	521889.03	4511630.15	167	519447.8	4516425.18	267	523194.31	4514877.53
68	521839.71	4511516.69	168	519505.65	4516377.25	268	523212.17	4514845.04
69	521798.36	4511387.75	169	519569.33	4516364.9	269	523209.52	4514810.04
70	521719	4511347.92	170	519662.95	4516348.45	270	523235.67	4514784.48
71	521604.57	4511311.58	171	519723.3	4516347.19	271	523292.83	4514772.97
72	521338.95	4511219.01	172	519785.8	4516328.44	272	523347.69	4514762.95
73	521212.82	4511184.48	173	519797.11	4516272.2	273	523375.9	4514755.67
74	521114.12	4511134.7	174	519831.24	4516228.98	274	523414.53	4514769.03
75	520908.12	4511105.1	175	519877.87	4516182.17	275	523477.35	4514794.84
76	520843.9	4511104.37	176	519917.23	4516226.23	276	523522.81	4514809.04
77	520695.34	4510987.83	177	519937.61	4516296.22	277	523665.27	4514885.87
78	520692.07	4510933.29	178	519998.59	4516301.9	278	523647.97	4514813.16
79	520679.4	4510849.45	179	520001.91	4516338.06	279	523599.01	4514751.43
80	520592.2	4510815.36	180	519993.76	4516397.77	280	523575.51	4514720.99
81	520489.64	4510761.64	181	519995.62	4516452.6	281	523572.43	4514692.73
82	520258.97	4510677.26	182	520035.33	4516466.76	282	523588.26	4514670.04
83	520138.39	4510668.1	183	520098.97	4516457.52	283	523570.52	4514604.14
84	520080.51	4510622.67	184	520135.08	4516459.18	284	523572.68	4514585.67
85	520021.9	4510641.47	185	520187.33	4516464.76	285	523589.95	4514564.46
86	519932.06	4510667.7	186	520258.48	4516453.11	286	523616.76	4514560.87
87	519846.56	4510655.04	187	520313.03	4516476.15	287	523676.39	4514580.04
88	519735.89	4510630.42	188	520346.73	4516470.31	288	523737.73	4514621.13
89	519672.44	4510561.57	189	520390.6	4516447.14	289	523804.12	4514645.73
90	519616.66	4510502.54	190	520439.35	4516432.75	290	523845.84	4514656.43
91	519527.73	4510448.97	191	520476.87	4516419.47	291	523883.59	4514632.52
92	519444.38	4510418.83	192	520477.3	4516420.15	292	523977.3	4514608.29
93	519379.16	4510334.38	193	520477.45	4516419.84	293	524037.91	4514584.65
94	519357.17	4510213.45	194	520502.72	4516391.62	294	524064.8	4514573.76
95	519313.3	4510135.09	195	520512.34	4516381.04	295	524123.11	4514581.24
96	519246.04	4510058.41	196	520514.95	4516360.87	296	524183.36	4514618.21
97	519125.84	4510016.16	197	520584.07	4516342.65	297	524200.11	4514607.71
98	519082.01	4509933.91	198	520641.34	4516320.73	298	524206.92	4514531.75
99	519042.18	4509841.97	199	520684.23	4516310.52	299	524189.95	4514456.71
100	518992.15	4509790.79	200	520778.29	4516292.59	300	524187	4514419.51

**ZONA ME PËRPARËSI ZHVILLIMIN E EKONOMISË MALORE**  
**ZONA 4, NJËSIA ADMINISTRATIVE PISHAJ, BASHKIA GRAMSH, QARKU ELBASAN**





**Legjendë**

- Zona me përparësi zhvillimin e ekonomisë malore
- Ndërfesa
- Bashkia Gramsh
- Izoppe


**Kategoritë e Rrjetit Rrugor**

- Kategoria C: Rruga Interurbane Dytësore
- Kategoria F: Rruga Lokale

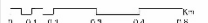
\*Zona 4 ndodhet në territorin e Njësisë Administrative Pishaj në sipërfaqe prej 195 ha.

\*\*Sistemi Koordinativ: KROJSH (Korniza Referuese Gjeodetike Shqiptare) EPSG:6870

Njësi Administrative	Zona	Sipërfaqe (ha)
Limnë, Kulla dhe Kuvendit	Zona 1	0507
Kultur	Zona 2	2233
Dëkulturbesues	Zona 3	2825
Pishaj	Zona 4	195
Kudëgjatë	Zona 5	1185
SHT	Zona 6	1785
Pishaj	Zona 7	1051
Pishaj	Zona 8	135
T.L. 4	Zona 9	1535
Pishaj	Zona 10	298
Kultur dhe shërbimet	Zona 11	1023
T.L. 6	Zona 12	147
Kulturave	Zona 13	494
Imet	Zona 14	410
Konstan	Zona 15	114
Pishaj	Zona 16	811

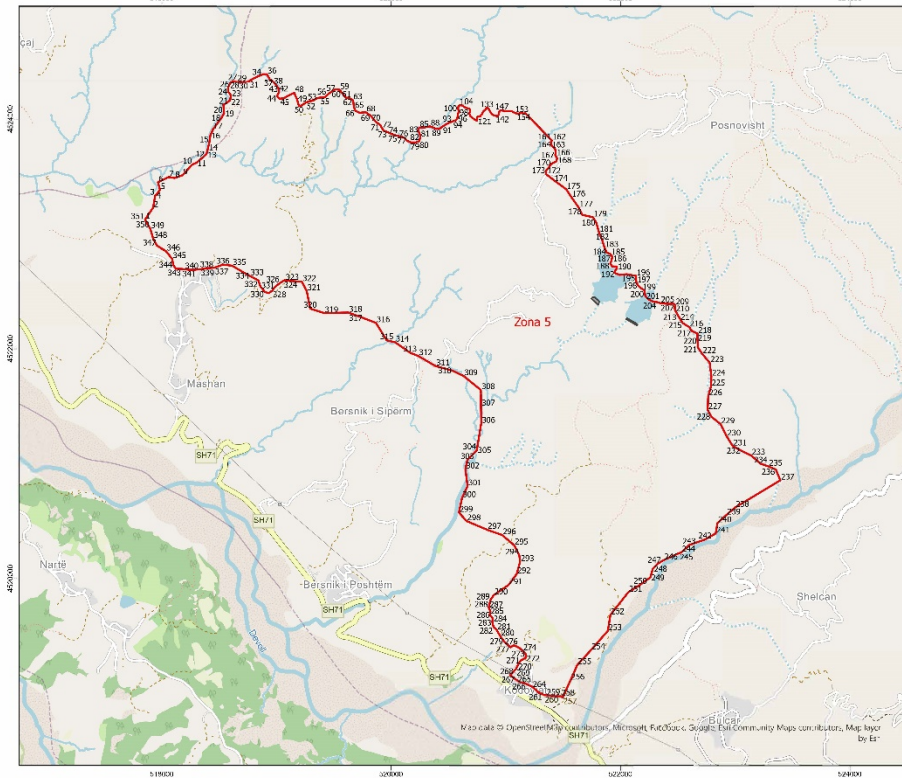



1:10,000



<b>Zona 4</b>					
<b>Njësia Administrative Pishaj</b>					
<b>Nr</b>	<b>Koordinata X</b>	<b>Koordinata Y</b>	<b>Nr</b>	<b>Koordinata X</b>	<b>Koordinata Y</b>
1	511612.52	4532386.95	52	511377.39	4533552.14
2	511531.7	4532321	53	511462.82	4533561.43
3	511410.25	4532236.9	54	511553.95	4533592.18
4	511236.46	4532099.26	55	511652.9	4533665.78
5	511055.72	4531991.32	56	511675.76	4533687.33
6	510915.16	4531893.11	57	511678.58	4533672.77
7	510885.18	4531921.28	58	511684.14	4533652.31
8	510832.25	4531978.89	59	511693.47	4533634.17
9	510758.68	4532075.46	60	511715.92	4533599.45
10	510689.75	4532181.6	61	511727.62	4533572.97
11	510664.18	4532235.96	62	511730.21	4533546.39
12	510587.39	4532301.61	63	511739.5	4533532.05
13	510548.67	4532362.94	64	511754.8	4533523.86
14	510511.6	4532383.9	65	511758.1	4533522.05
15	510481.78	4532394.26	66	511758.15	4533521.71
16	510478.51	4532472.63	67	511758.71	4533521.99
17	510485.07	4532522.6	68	511766.92	4533512.12
18	510462.09	4532557.98	69	511771.52	4533491.62
19	510440.79	4532550.61	70	511772.44	4533465.16
20	510402.75	4532552.55	71	511771.29	4533429.64
21	510360.55	4532606.72	72	511761.48	4533388.73
22	510360.2	4532637.6	73	511746.17	4533352.75
23	510383.67	4532662.82	74	511737.97	4533338.11
24	510358.62	4532672.04	75	511729.97	4533323.27
25	510319.17	4532692.97	76	511729.7	4533323.26
26	510256.95	4532731.46	77	511712.61	4533278.44
27	510241.04	4532772.86	78	511712.94	4533276.37
28	510226.31	4532814.28	79	511716.68	4533248.38
29	510173.75	4532838.62	80	511736.47	4533206.25
30	510137.72	4532872.66	81	511738.13	4533170.46
31	510122.67	4532942.59	82	511737.85	4533140.56
32	510122.97	4533019.81	83	511750.5	4533123.88
33	510125.6	4533101.82	84	511766.87	4533107.88
34	510148.89	4533142.48	85	511767.01	4533068.64
35	510195.28	4533138.25	86	511762.62	4533017.2
36	510210.24	4533180.01	87	511764.87	4532983.9
37	510252.67	4533210.19	88	511763.77	4532974.58
38	510264.87	4533255.41	89	511773.14	4532923.47
39	510266.39	4533256.68	90	511758.89	4532780.37
40	510312.12	4533309.48	91	511758.92	4532779.99
41	510344.42	4533394.2	92	511742.6	4532760.42
42	510413.84	4533453.21	93	511726.7	4532704.28
43	510504.64	4533512.46	94	511711.07	4532667.12
44	510662.69	4533508.33	95	511687.18	4532628.4
45	510712.61	4533506.52	96	511685.98	4532605.52
46	510854.53	4533562.79	97	511680.1	4532567.01
47	510928.1	4533570.76	98	511671.14	4532541.6
48	510997.13	4533559.67	99	511667.13	4532508.95
49	511137.81	4533517.32	100	511668.41	4532482.2
50	511224.48	4533521.88	101	511648.26	4532438.84
51	511296.62	4533551.22	102	511612.52	4532386.95


**ZONA ME PËRPARËSI ZHVILLIMIN E EKONOMISË MALORE**  
**ZONA 5, NJËSIA ADMINISTRATIVE KODOVJAT, BASHKIA GRAMSH, QARKU ELBASAN**



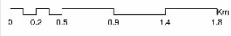


SH. KOMUNA GRAMSH

Nësi Administrativ	Zona	Sipërfaqe (ha)
Letë, Ujë dhe Kodinat	Zona 1	5000
Kukaj	Zona 2	2155
Skënderbeuq	Zona 3	2825
Pirraj	Zona 4	1565
Kodogaj	Zona 5	1138
Sul	Zona 6	1283
Pishaj	Zona 7	1581
Pishaj	Zona 8	309
Imje	Zona 9	1555
PHSH	Zona 10	276
Sullar dhe Kodinat	Zona 11	1032
Tunje	Zona 12	127
Kushovë	Zona 13	484
Imje	Zona 14	763
Herqan	Zona 15	514
PHSH	Zona 16	331



1:25,000



0 0.2 0.5 0.8 1.4 1.8 Km

**Legjendë**

- Zona me përparësi zhvillimit e ekonomisë malore
- Ndërtësia
- Bashkia Gramsh
- Izolpse

**Kategoritë e Rrjetit Rrugor**

- Kategorija C. Rruga Interurbane Dytësore
- Kategorija F. Rruga Lokale

\*Zona 5 ndodhet në territorin e Njësisë Administrative Kodovjat me sipërfaqe prej 1168 ha.

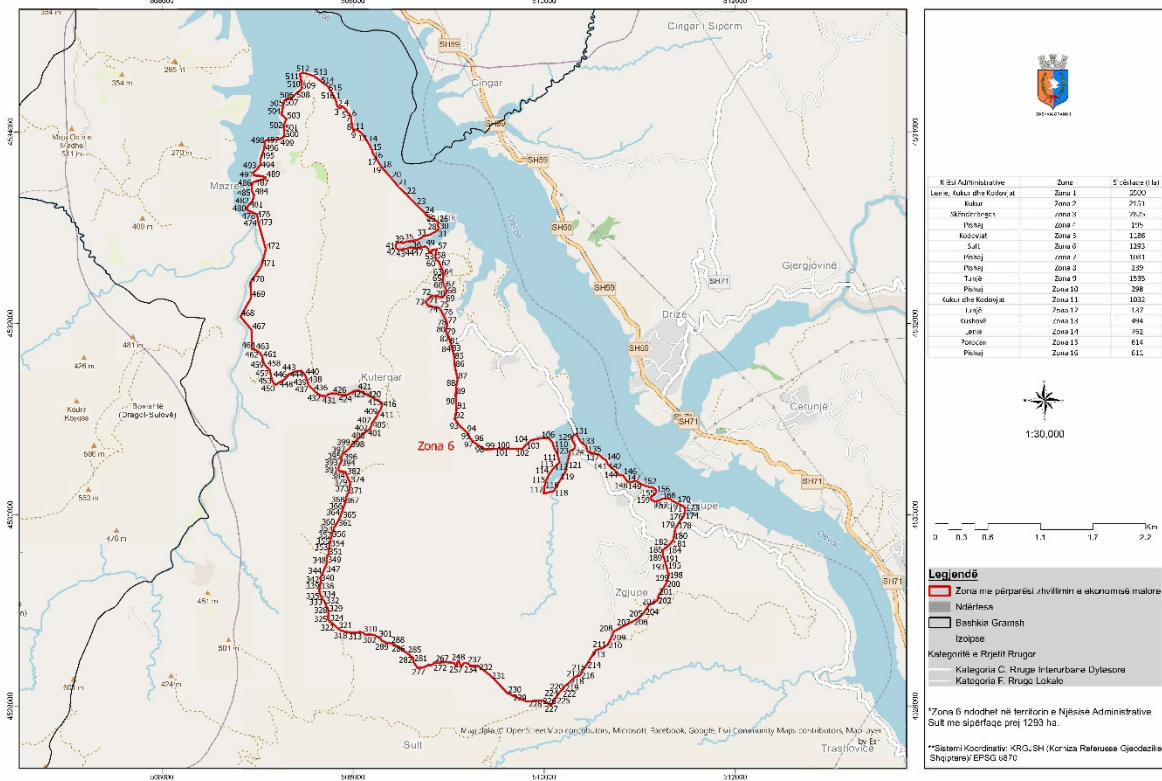
\*\*Sistemi Koordinativ: KRGJSH (Korniza Referuese Gjercorake Shqiptare) EPSG: 6870

Zona 5								
Njësia Administrative Kodovjat								
Nr	Koordinata X	Koordinata Y	Nr	Koordinata X	Koordinata Y	Nr	Koordinata X	Koordinata Y
1	517854.53	4523125.41	118	520705.97	4524012.87	235	523289.37	4520977.4
2	517923.68	4523227.77	119	520730.1	4523993.61	236	523354.65	4520950.3
3	517942.13	4523334.79	120	520746.33	4523986.42	237	523393.84	4520856.35
4	517947.16	4523335.98	121	520748.65	4523993.22	238	522998.58	4520618.71
5	517983.88	4523382.78	122	520749.61	4524013.17	239	522922.93	4520553.68
6	517965.63	4523449.48	123	520756.1	4524021.01	240	522845.76	4520484.11
7	518057.88	4523494.63	124	520770.85	4524020.98	241	522830.09	4520392.97
8	518111.96	4523486.13	125	520779.58	4524024.47	242	522736.02	4520339.92
9	518180.87	4523511.24	126	520783.84	4524035.68	243	522597.95	4520291.68
10	518266.48	4523604.99	127	520793.14	4524041.97	244	522530.4	4520229.15
11	518299.79	4523617.53	128	520796.04	4524049.77	245	522510.89	4520222.26
12	518350.99	4523661.46	129	520800.89	4524061.39	246	522376.07	4520161.32
13	518389.39	4523694.59	130	520806.57	4524070.03	247	522322.6	4520129.15
14	518403.19	4523751.77	131	520818.81	4524079.93	248	522282.26	4520086
15	518413.37	4523792.19	132	520827.1	4524087.2	249	522258.99	4520009.62
16	518422.53	4523855.4	133	520830	4524095.41	250	522172.46	4519947.37
17	518443.99	4523907.35	134	520830.93	4524100.8	251	522067.4	4519881.2
18	518518.85	4524010.09	135	520830.89	4524100.9	252	521911.85	4519684.51
19	518542.73	4524049.91	136	520841.76	4524102.39	253	521889.31	4519545.03
20	518538.39	4524097	137	520842.06	4524101.95	254	521742.71	4519378.14
21	518536.56	4524124.35	138	520844.95	4524094.51	255	521623.52	4519248.69
22	518595.42	4524163.04	139	520855.07	4524080.3	256	521563.79	4519114.35
23	518601.79	4524204.93	140	520875.43	4524044.7	257	521496.81	4518967.24
24	518578.63	4524235.84	141	520888.68	4524035.68	258	521478.58	4518976.85
25	518577.43	4524273.85	142	520905.49	4524029.9	259	521428.38	4518977.8
26	518595.28	4524309.03	143	520924.28	4524025.72	260	521380.42	4518983.33
27	518616.66	4524328.64	144	520936.32	4524035.63	261	521324.81	4518991.82
28	518626.24	4524327.63	145	520940.89	4524054.82	262	521287.37	4519008.12
29	518683.35	4524320.68	146	520944.69	4524071	263	521252.81	4519038.14
30	518729.71	4524321.97	147	520956.6	4524075.53	264	521225.17	4519061.4
31	518762.33	4524328.42	148	520977.95	4524072.98	265	521162.51	4519088.82
32	518772.8	4524335	149	520988.15	4524070.7	266	521128.98	4519095.28
33	518799.33	4524351.65	150	521008.3	4524068.54	267	521085.34	4519121.39
34	518846.98	4524373.49	151	521033.2	4524070.22	268	521036.26	4519158.09
35	518884.83	4524388.37	152	521051.35	4524069.03	269	521088.85	4519214.2
36	518916	4524388.72	153	521076.04	4524053.77	270	521101.47	4519240.95
37	518939.29	4524346.41	154	521090.24	4524049.35	271	521128.32	4519286.12
38	518968.9	4524324.56	155	521110.59	4524047.58	272	521172.16	4519309.43
39	518972.86	4524324.38	156	521132.66	4524052.82	273	521174.08	4519341.39
40	518973.49	4524323.47	157	521147.84	4524050.2	274	521144.83	4519372.23
41	518991.59	4524298.72	158	521158.63	4524047.93	275	521118.7	4519396.26
42	519016.9	4524266.94	159	521169.25	4524052.43	276	521070.54	4519419.28
43	519020.88	4524230.15	160	521169.27	4524052.46	277	521040.32	4519402.21
44	519004.63	4524196.7	161	521398.48	4523815.62	278	521015.74	4519423.98
45	519025.07	4524175.55	162	521400.29	4523815.35	279	520984.23	4519453.28
46	519061.88	4524177.16	163	521393.78	4523784.39	280	520952.56	4519497.02
47	519097.28	4524198.95	164	521401.11	4523766.66	281	520919.21	4519553.66
48	519154.32	4524226.45	165	521428.73	4523740.84	282	520892.31	4519579.21
49	519179.32	4524168.19	166	521435.02	4523710.02	283	520881.96	4519620.15
50	519195.12	4524115.9	167	521430.53	4523687.39	284	520884.61	4519654.4
51	519213.38	4524115.35	168	521447.49	4523657.89	285	520859.14	4519687.56

52	519257.13	4524145.5	169	521438.32	4523629.27	286	520865.67	4519715.01
53	519310.2	4524159.03	170	521396.94	4523610.97	287	520852.41	4519744.51
54	519364.68	4524182.47	171	521374.75	4523577.45	288	520850.55	4519749.13
55	519422.4	4524188.45	172	521352.44	4523554.63	289	520865.26	4519813.65
56	519438.18	4524205.36	173	521349.26	4523521.32	290	520894.47	4519856.68
57	519475.88	4524233.16	174	521413.99	4523470.98	291	521023.4	4519945.4
58	519513.62	4524257.16	175	521526.61	4523387.91	292	521094.71	4520040.89
59	519549.41	4524252.25	176	521571.35	4523319.51	293	521124.02	4520147.04
60	519567.94	4524228.13	177	521635.36	4523228.76	294	521116.94	4520204.01
61	519607.24	4524182.2	178	521666.97	4523164.97	295	521072.37	4520290.66
62	519635.39	4524180.24	179	521758.69	4523144.63	296	520966.93	4520379.37
63	519663.18	4524165.01	180	521787.72	4523098.63	297	520838.8	4520424.32
64	519670.54	4524144.9	181	521812.47	4523012.18	298	520658.1	4520500.57
65	519674.58	4524103.36	182	521841.27	4522941.6	299	520590.53	4520575.22
66	519688.01	4524071.44	183	521860.55	4522878.7	300	520618.08	4520703.16
67	519725.02	4524055.23	184	521881.44	4522838.1	301	520666.22	4520805.22
68	519778.44	4524059.4	185	521912.72	4522825.36	302	520647.13	4520952.93
69	519821.56	4524029.01	186	521928.26	4522801.51	303	520663.64	4521031.44
70	519863.72	4523978.4	187	521921.2	4522769.87	304	520746.75	4521119.4
71	519906.86	4523945.63	188	521910.38	4522741.9	305	520746.96	4521119.47
72	519919.01	4523922.01	189	521927.36	4522717.96	306	520785.04	4521350.65
73	519934.71	4523899.61	190	521968.91	4522717.33	307	520783.34	4521499.34
74	519969.32	4523885.75	191	521966.85	4522697.54	308	520781.73	4521640.94
75	520021.86	4523862.59	192	521952.59	4522681.41	309	520632.1	4521762.01
76	520108.87	4523840.8	193	521946.73	4522662.33	310	520532.93	4521810.19
77	520139.39	4523809.52	194	521991.8	4522643.84	311	520387.46	4521849.14
78	520171.17	4523796.75	195	522054.84	4522649.88	312	520235.63	4521937.32
79	520214	4523796.75	196	522134.84	4522635.59	313	520165.69	4521965.53
80	520242.6	4523805.83	197	522136.92	4522586.95	314	520034.12	4522056.84
81	520254.37	4523840.52	198	522152.52	4522552.15	315	519961.42	4522073.42
82	520252.67	4523861.91	199	522184.01	4522524.37	316	519866.86	4522226.07
83	520244.19	4523880.31	200	522209.27	4522509.45	317	519756.16	4522268.31
84	520236.16	4523901.14	201	522215.91	4522460.87	318	519625.09	4522316.12
85	520243.67	4523925.07	202	522244.39	4522430.78	319	519416.31	4522310.84
86	520270.46	4523923.43	203	522288.73	4522409.23	320	519294.04	4522350.05
87	520298.14	4523928.61	204	522317.65	4522407.28	321	519263.29	4522503.43
88	520338.92	4523936.38	205	522348.94	4522396.99	322	519221.76	4522584.17
89	520395.14	4523914.15	206	522392.33	4522392.93	323	519123.05	4522591.74
90	520424.79	4523916.92	207	522425.81	4522391.03	324	519122.95	4522591.67
91	520445.52	4523934.67	208	522460	4522392.94	325	519069.51	4522597.56
92	520485.16	4523957.51	209	522476.12	4522380.2	326	519031.75	4522575.08
93	520506.93	4523968.47	210	522476.49	4522379.7	327	518985.78	4522538.81
94	520536.97	4523980	211	522473.29	4522365.1	328	518961.07	4522505.08
95	520564.12	4523989.07	212	522474.79	4522337.79	329	518930.89	4522484.96
96	520577.05	4524007.22	213	522492.98	4522305.92	330	518898.08	4522495.23
97	520581.07	4524038.41	214	522516.01	4522265.79	331	518858.96	4522543.71
98	520586.7	4524057.46	215	522542.62	4522224.51	332	518841.66	4522595.49
99	520588.96	4524072.57	216	522600.06	4522188.34	333	518766.95	4522635.48
100	520581.9	4524093.9	217	522621.82	4522155.32	334	518701.56	4522671.86
101	520581.66	4524094.24	218	522671.45	4522132.28	335	518611.86	4522724.67
102	520582.98	4524094	219	522670.59	4522129.22	336	518531.94	4522733.04
103	520585.63	4524108.54	220	522671.83	4522087.41	337	518457.71	4522706.74
104	520594.76	4524118.38	221	522674.23	4522013.65	338	518390.84	4522702.34
105	520608.36	4524120.48	222	522712.01	4521956.53	339	518369.6	4522697.54

106	520623.49	4524116.76	223	522777.88	4521877.46	340	518289.86	4522689.02
107	520637.23	4524106.7	224	522792.21	4521760.67	341	518237.4	4522688.43
108	520650.47	4524098.09	225	522789.49	4521673.39	342	518172.69	4522696.05
109	520670.48	4524092.96	226	522764.48	4521587.72	343	518121.5	4522697.73
110	520683.17	4524089.22	227	522760.27	4521468.86	344	518099.43	4522731.82
111	520686.59	4524081.19	228	522790.62	4521411.66	345	518089.55	4522783.68
112	520686.91	4524081.23	229	522873.05	4521345.77	346	518036.82	4522849.91
113	520687.25	4524080.82	230	522926.25	4521238.71	347	517958.33	4522895.42
114	520689.69	4524076.27	231	522979.2	4521153.92	348	517924.2	4522958.14
115	520689.63	4524064.9	232	523050.17	4521115.75	349	517899.1	4523043.25
116	520681	4524052.25	233	523139.78	4521072.22	350	517855.56	4523117.01
117	520689.47	4524025.83	234	523222.27	4521000.76	351	517854.53	4523125.41

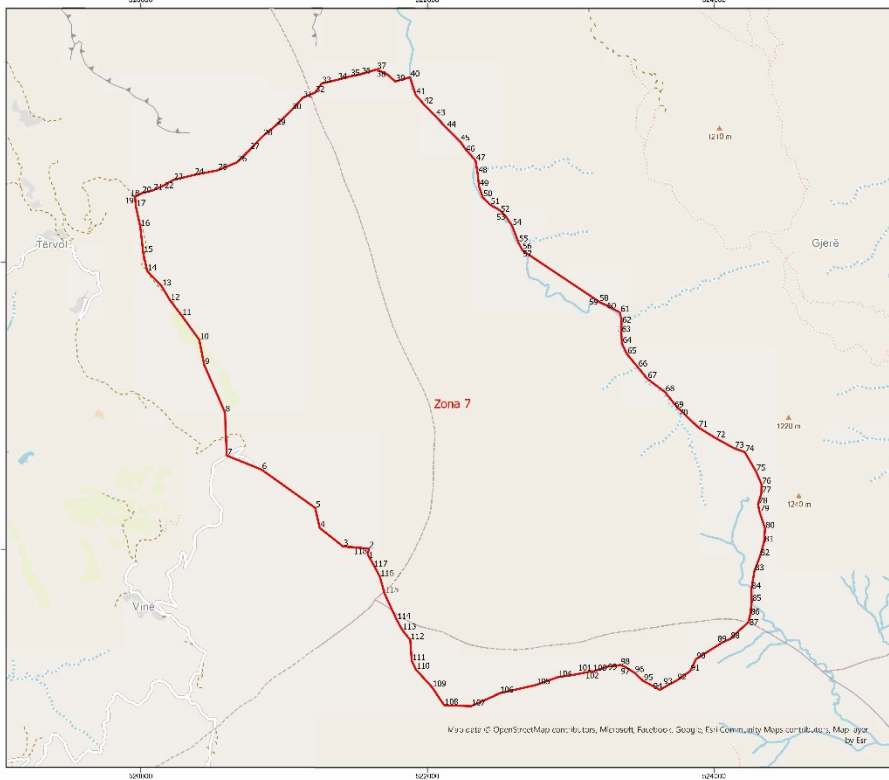
**ZONA ME PËRPËRËSI ZHVILLIMIN E EKONOMISË MALORE**  
**ZONA 6, NJËSIA ADMINISTRATIVE SULT, BASHKIA GRAMSH, QARKU ELBASAN**



Zona 6											
Njësi Administrative Sullt											
Nr	Koordinata X	Koordinata Y	Nr	Koordinata X	Koordinata Y	Nr	Koordinata X	Koordinata Y	Nr	Koordinata X	Koordinata Y
1	507814.59	4534340.64	130	510293.59	4530812.98	259	509072.24	4528429.76	388	507883.49	4530452.91
2	507835.65	4534263.95	131	510311.91	4530840.83	260	509067.44	4528437.49	389	507883.44	4530453.92
3	507859.07	4534246.08	132	510344.82	4530830.28	261	509059.71	4528447.89	390	507882.99	4530452.69
4	507899.69	4534262.24	133	510376.35	4530772.13	262	509045.85	4528454.32	391	507852.36	4530460.58
5	507935.54	4534215.56	134	510440.64	4530716.29	263	509031.64	4528456.01	392	507844.95	4530467.73
6	507981.73	4534157.23	135	510447.92	4530669.76	264	509002.82	4528457.53	393	507851.61	4530512.13
7	507982.29	4534108.57	136	510479.68	4530646.97	265	508964.73	4528459.77	394	507872.12	4530545.8
8	507992.35	4534052.18	137	510522.81	4530642.64	266	508949.11	4528457.95	395	507881.86	4530622.1
9	508004.92	4534009.28	138	510582.18	4530623.39	267	508925.66	4528458.29	396	507897.89	4530644.92
10	508006.24	4534007.51	139	510604.34	4530597.29	268	508912.09	4528456.91	397	507927.48	4530665.67
11	508018.56	4534025.01	140	510648.66	4530572.72	269	508903.29	4528453.31	398	507969.42	4530783.82
12	508047.65	4534020.63	141	510664.25	4530530.78	270	508859.82	4528458	399	507977.71	4530725.26
13	508096	4533978.81	142	510735.39	4530466.34	271	508849.19	4528456.66	400	508129.79	4530867.81
14	508155.1	4533890.01	143	510766.88	4530439.69	272	508833.33	4528437.89	401	508145.58	4530873.96
15	508195.16	4533818.27	144	510777.07	4530419.88	273	508820.87	4528429.71	402	508166.59	4530891.05
16	508207.45	4533774.91	145	510790.96	4530413.61	274	508784.19	4528430.3	403	508177.77	4530903.42
17	508256.3	4533699.7	146	510822.75	4530417.19	275	508756.76	4528413.41	404	508189.87	4530927.26
18	508303.57	4533624.13	147	510858.06	4530365.19	276	508723.72	4528403.99	405	508194.31	4530942.46
19	508304.08	4533623.57	148	510880.81	4530343.91	277	508696.62	4528401.67	406	508193.4	4530952.45
20	508401.34	4533515.73	149	510912.35	4530340.42	278	508675.56	4528398.92	407	508193.22	4530952.85
21	508469.11	4533432.97	150	510949.78	4530356.27	279	508658.67	4528425.85	408	508253.21	4531038.91
22	508559.2	4533346.76	151	510983.04	4530343.15	280	508642.9	4528443.75	409	508265.25	4531071.78
23	508662.55	4533236.56	152	511028.7	4530314.42	281	508631.61	4528464.72	410	508272.62	4531079.24
24	508745.09	4533161.39	153	511100.99	4530290.17	282	508628.92	4528480.26	411	508277.21	4531085.48
25	508763.7	4533129.97	154	511138.01	4530285.45	283	508626.62	4528505.35	412	508285.49	4531098.35
26	508896.71	4533051.81	155	511164.9	4530267.11	284	508626.26	4528507.76	413	508292.16	4531113.57
27	508896.73	4533049.89	156	511170.44	4530232.14	285	508566.77	4528553.53	414	508294.13	4531125.31
28	508883.2	4533030.91	157	511155.55	4530213	286	508438.24	4528641.91	415	508302.5	4531141.99
29	508883.84	4533030.32	158	511121.71	4530192.68	287	508414.19	4528650.69	416	508304.04	4531157.02
30	508897.62	4532992.02	159	511115.72	4530178.47	288	508392.67	4528656.24	417	508303.33	4531162.02
31	508886.07	4532972.27	160	511115.45	4530177.82	289	508378.14	4528660.16	418	508301.22	4531169.96
32	508807.35	4532924.28	161	511123.42	4530155.73	290	508357.32	4528661.24	419	508300.87	4531171.25
33	508740.04	4532907.81	162	511147.98	4530144.44	291	508348.63	4528661.4	420	508141.97	4531255.17
34	508672.24	4532866.22	163	511171.45	4530144.07	292	508341.47	4528665.79	421	508050.83	4531299.45
35	508638.5	4532865.84	164	511171.74	4530144.11	293	508333.66	4528669	422	508005.96	4531291.44
36	508608.79	4532855.29	165	511207.71	4530149.95	294	508328.34	4528674.07	423	507976.83	4531271.6
37	508557.02	4532853.13	166	511230.65	4530167.57	295	508322.52	4528675.85	424	507934.72	4531249.63
38	508528.95	4532837.11	167	511267.6	4530169.92	296	508310.5	4528679.79	425	507886.46	4531249.08
39	508484.17	4532840.53	168	511317.79	4530165.99	297	508297.1	4528688.07	426	507837.86	4531261.45
40	508460.61	4532841.83	169	511347.63	4530142.54	298	508289.73	4528699.96	427	507825.55	4531264.58
41	508444.51	4532808.68	170	511385.77	4530124.66	299	508287.05	4528708.87	428	507774.75	4531267.42
42	508451.1	4532781.29	171	511456.89	4530090.11	300	508280.76	4528712.63	429	507742.48	4531257.4
43	508477.15	4532768.24	172	511474.16	4530069.41	301	508263.81	4528720.6	430	507738.32	4531254.29
44	508537.52	4532773.64	173	511472.42	4530052.99	302	508247.78	4528729.24	431	507716.23	4531237.79
45	508563.38	4532777.08	174	511471.39	4530030.8	303	508229.01	4528741.69	432	507670.1	4531241.62
46	508601.64	4532794.78	175	511463.98	4530004.35	304	508227.7	4528742.89	433	507629.69	4531262.03
47	508632.41	4532780.22	176	511460.04	4529983.41	305	508204.51	4528746.81	434	507607.55	4531281.56
48	508677.9	4532783.1	177	511416.94	4529929.24	306	508186.8	4528749.18	435	507606.16	4531282.08
49	508755.37	4532802.82	178	511391.7	4529887.48	307	508155.93	4528750.11	436	507586.13	4531304.66
50	508777.53	4532786.59	179	511371.78	4529858	308	508135.72	4528746.02	437	507539.28	4531345.94
51	508792.74	4532760.86	180	511352.52	4529742.69	309	508118.59	4528754.18	438	507527.51	4531377.74
52	508793.66	4532758.1	181	511336.1	4529717.43	310	508103.62	4528769.77	439	507524.22	4531398.99
53	508799.24	4532741.32	182	511298.94	4529677.78	311	508082.69	4528773.38	440	507497.03	4531457.18
54	508817.34	4532736.81	183	511291.28	4529670.4	312	508070.74	4528778.39	441	507493.83	4531464.03
55	508821.5	4532761.25	184	511288.13	4529667.37	313	508045.42	4528771.03	442	507459.15	4531504.69
56	508822.06	4532761.31	185	511263.85	4529654.24	314	508030.99	4528767.97	443	507406.73	4531501.05
57	508879.29	4532772.82	186	511246.04	4529637	315	507981.17	4528767.72	444	507332.39	4531467.75
58	508868.19	4532751.52	187	511240.8	4529617.65	316	507980.85	4528767.68	445	507331.84	4531467.5
59	508860.2	4532694.92	188	511240.41	4529595.46	317	507980.56	4528767.76	446	507314.52	4531452.1
60	508866.82	4532665.18	189	511241.19	4529590.85	318	507945.95	4528774.43	447	507296.58	4531425.28
61	508899.23	4532645.14	190	511244.54	4529571.08	319	507911.36	4528779.53	448	507266.42	4531403.65
62	508917.84	4532595.91	191	511256.72	4529546.46	320	507872.75	4528793.21	449	507222.62	4531377.29
63	508942.75	4532545.18	192	511262.62	4529521.99	321	507841.94	4528810.91	450	507185.6	4531356.34
64	508945.6	4532502.05	193	511268.87	4529496.13	322	507810.16	4528844.3	451	507170.64	4531370.24
65	508935.18	4532452.48	194	511273.61	4529474.97	323	507779.28	4528868.27	452	507170.23	4531370.61
66	508946.63	4532411.8	195	511283.88	4529448.4	324	507753.95	4528886.82	453	507157.75	4531398.6
67	508966.67	4532375.93	196	511287.39	4529422.4	325	507739.07	4528910.16	454	507148.43	4531415.22
68	508975.87	4532325.8	197	511289.5	4529406.36	326	507736.32	4528914.47	455	507141.16	4531452.4

69	508961.27	4532298.95	198	511301.61	4529387.53	327	507741.08	4528955.82	456	507133.18	4531485.76
70	508934.12	4532270.39	199	511307.36	4529383.48	328	507740.95	4528985.24	457	507126.78	4531513.82
71	508896.34	4532280.16	200	511274.19	4529277.59	329	507740.99	4528999.84	458	507095.27	4531543.11
72	508821.66	4532291.08	201	511197.13	4529159.09	330	507735.16	4529023.64	459	507075.99	4531566.46
73	508758.05	4532225.21	202	511182.3	4529105.46	331	507719.93	4529042.19	460	507054.2	4531610.31
74	508783.63	4532184.69	203	511093.78	4529054.55	332	507705.67	4529084	461	507050.66	4531654.37
75	508903.98	4532160.95	204	511049.42	4528986.33	333	507688.27	4529112.4	462	507019.01	4531695.83
76	508939.26	4532096.21	205	510994.26	4528926.3	334	507670.53	4529134.83	463	506976.87	4531723.48
77	508980.2	4532015.84	206	510932.92	4528888.77	335	507655.73	4529169.22	464	506940.29	4531731.43
78	508983.82	4531973.5	207	510828.95	4528837.68	336	507647.82	4529195.05	465	506938.4	4531733.04
79	508967.83	4531930.94	208	510723.9	4528778.27	337	507645.97	4529213.14	466	506939.55	4531734.88
80	508975.99	4531903.56	209	510703.21	4528717.44	338	507649.38	4529238.89	467	506937.3	4531931.78
81	509005.6	4531853.67	210	510664.85	4528643.34	339	507655.03	4529266.53	468	506821.37	4532070.21
82	509011.47	4531820.78	211	510611.79	4528608.28	340	507661.21	4529301.57	469	506933.45	4532268.42
83	509026.09	4531777.78	212	510538.4	4528584.87	341	507660.11	4529326.04	470	506925.28	4532427.14
84	509031.08	4531752.72	213	510488.2	4528507.08	342	507655.61	4529341.42	471	507037.72	4532593.59
85	509055.21	4531677.08	214	510443.91	4528431.72	343	507655.49	4529341.63	472	507086.5	4532772.02
86	509066.37	4531539.25	215	510394.78	4528364.63	344	507675.36	4529377.45	473	507007.01	4533056.97
87	509094.62	4531415.03	216	510376.25	4528322.84	345	507682.19	4529392.54	474	507001.9	4533066.15
88	509078.25	4531338.2	217	510317.1	4528300.78	346	507693.77	4529423.13	475	507004.63	4533102.95
89	509073.47	4531253.83	218	510265.43	4528247.92	347	507715.67	4529469.26	476	506982.81	4533140.72
90	509076.15	4531186.8	219	510211.16	4528206.24	348	507724.39	4529493.23	477	506952.23	4533155.19
91	509082.84	4531104.49	220	510211.13	4528205.73	349	507726.59	4529497.23	478	506936.23	4533162.76
92	509062.92	4531002.7	221	510203.28	4528190	350	507724.93	4529565.33	479	506890.87	4533181.25
93	509115.49	4530930.49	222	510188.69	4528170.91	351	507737.43	4529581.63	480	506889.33	4533212.12
94	509187.12	4530866.17	223	510172.58	4528157.55	352	507746.05	4529601.28	481	506908.22	4533234.09
95	509233.97	4530790.06	224	510155.9	4528138.9	353	507745.56	4529626.37	482	506915.12	4533242.12
96	509264.7	4530763.19	225	510125.75	4528100.19	354	507759.01	4529720.56	483	506947.99	4533276.95
97	509264.59	4530759.83	226	510073.25	4528015.24	355	507763.47	4529744.84	484	506963.89	4533341.28
98	509312.8	4530726.04	227	510073.25	4528015.18	356	507774.83	4529776.57	485	506937.21	4533388.5
99	509380.72	4530685.12	228	509981.98	4528065.02	357	507783.75	4529814.06	486	506944.64	4533465.8
100	509499.63	4530688.93	229	509819.71	4528051.56	358	507795.71	4529838.69	487	506968.24	4533480.33
101	509630.81	4530691.66	230	509615.71	4528136.25	359	507801.79	4529871.55	488	507053.53	4533501.5
102	509771.85	4530690.82	231	509442.52	4528317	360	507819.06	4529892.68	489	507088.95	4533520.92
103	509804.53	4530727.98	232	509310.82	4528419.91	361	507835.73	4529920.39	490	507043.61	4533538.22
104	509835.84	4530755.54	233	509244	4528420.24	362	507855.06	4529956.56	491	506962.76	4533543.23
105	509865.24	4530781.41	234	509235.89	4528423.78	363	507863.55	4529974.04	492	506952.91	4533574.01
106	509965.57	4530800.95	235	509225.77	4528427.78	364	507869.67	4529992.28	493	506996.44	4533611.34
107	510047.68	4530805.57	236	509206.92	4528439.08	365	507886.24	4530039.47	494	507028.01	4533655.65
108	510088.75	4530753.3	237	509192.18	4528450.64	366	507900.37	4530082.17	495	507030.91	4533713.9
109	510102.84	4530699.56	238	509170.12	4528453.89	367	507913.56	4530115.24	496	507071.12	4533833.16
110	510103.12	4530699.5	239	509160.3	4528449.04	368	507921.73	4530148.91	497	507076.37	4533893.81
111	510136.45	4530639.74	240	509152.37	4528441.55	369	507930.47	4530190.61	498	507082.15	4533908.14
112	510161.64	4530547.21	241	509146.72	4528431.19	370	507939.18	4530212.31	499	507234.03	4533924.13
113	510102.84	4530494.56	242	509137.73	4528425.95	371	507952.37	4530233.4	500	507282.41	4533953.19
114	510051.65	4530425.29	243	509130.54	4528425.68	372	507961.63	4530264.18	501	507277.02	4534008.97
115	510020.82	4530361.83	244	509120.52	4528437.48	373	507964.82	4530296.21	502	507272.76	4534069.51
116	510001.21	4530291.06	245	509116.31	4528446.48	374	507970.34	4530331.7	503	507302.9	4534135.2
117	509994.57	4530222.3	246	509111.65	4528457.75	375	507962.88	4530350.05	504	507250.1	4534180.93
118	510100.09	4530247.64	247	509106.39	4528467.56	376	507951.99	4530369.8	505	507278.17	4534323.81
119	510165.62	4530361.63	248	509102.21	4528473.27	377	507951.66	4530369.68	506	507306.49	4534340.77
120	510222.13	4530451.37	249	509096.71	4528468.89	378	507951.5	4530369.88	507	507355.14	4534346.08
121	510245.05	4530557.45	250	509092.69	4528460.2	379	507945.55	4530380.58	508	507396.19	4534391.69
122	510264.64	4530630.07	251	509088.28	4528450.69	380	507941.69	4530393.42	509	507459.76	4534443.5
123	510266.12	4530663.5	252	509087.55	4528442.66	381	507935.86	4530410.3	510	507456.32	4534536.13
124	510266.63	4530664.86	253	509087.44	4528434.01	382	507932.56	4530418.6	511	507441.33	4534600.11
125	510266.34	4530665.43	254	509086.89	4528428.04	383	507927.55	4530436.16	512	507474.4	4534617.12
126	510304.37	4530684.83	255	509086.86	4528427.63	384	507921.21	4530445.19	513	507585.27	4534583.94
127	510321.86	4530701.75	256	509086.71	4528425.36	385	507915.65	4530448.97	514	507652.35	4534536
128	510320.84	4530734.53	257	509080.36	4528423.65	386	507915.33	4530449.01	515	507733.81	4534476.34
129	510295.63	4530775.07	258	509073.52	4528427.68	387	507883.52	4530452.91	516	507814.59	4534340.64

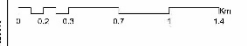
**ZONA ME PËRPARËSI ZHVILLIMIN E EKONOMISË MALORE**  
**ZONA 7, NJËSIA ADMINISTRATIVE PISHAJ, BASHKIA GRAMSH, QARKU ELBASAN**



Nr. Administrative	zona	Shifreska (ha)
Levele Shtet dhe Kodoret:	Zona 1	5520
Ruku	Zona 2	2511
Shtenderregues	Zona 3	2625
Fshat	Zona 4	195
Konvojat	Zona 5	1146
Suf	Zona 6	2123
Fshat	Zona 7	1041
Fshat	Zona 8	259
Tarq	Zona 9	2153
Fshat	Zona 10	298
Ruku dhe Kodoret	Zona 11	1032
Tarq	Zona 12	137
Katkovit	Zona 13	494
Lera	Zona 14	282
Proqan	Zona 15	411
Fshat	Zona 16	611



1:20,000



**Legjendë**

- Zona me përparësi zhvillimin e ekonomisë malore
- Ndërtesa
- Bashkia Gramsh
- Izolpse

**Kategoritë e Rrjetit Rrugor**

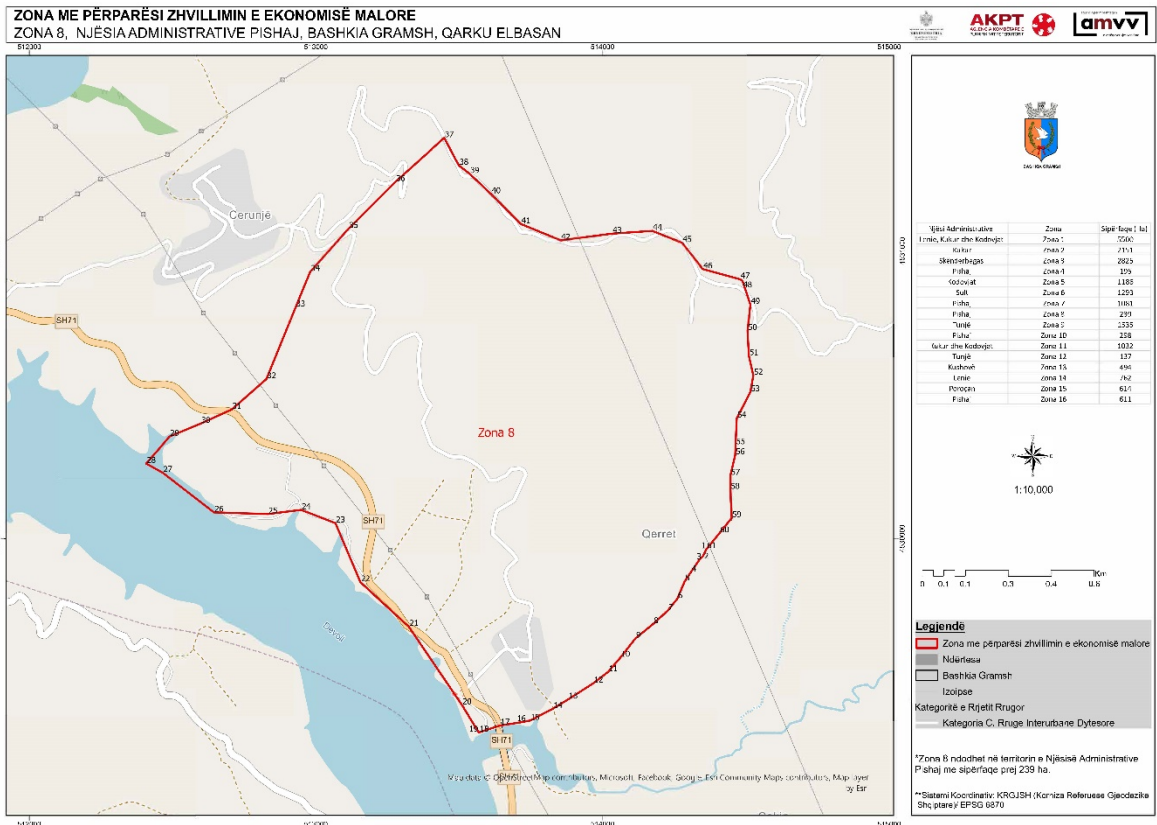
- Kategoria C: Rruge Interurbane Dytësore
- Kategoria F: Rruge Lokale

\*Zona 7 ndodhet në territorin e Njësia Administrative Pishaj me sipërfaqe prej 1031 ha.

\*\*Sistemi Koordinativ: KRGJSH (Koriza Referuese Gjeodetike Shqiptare) EPSG:6870

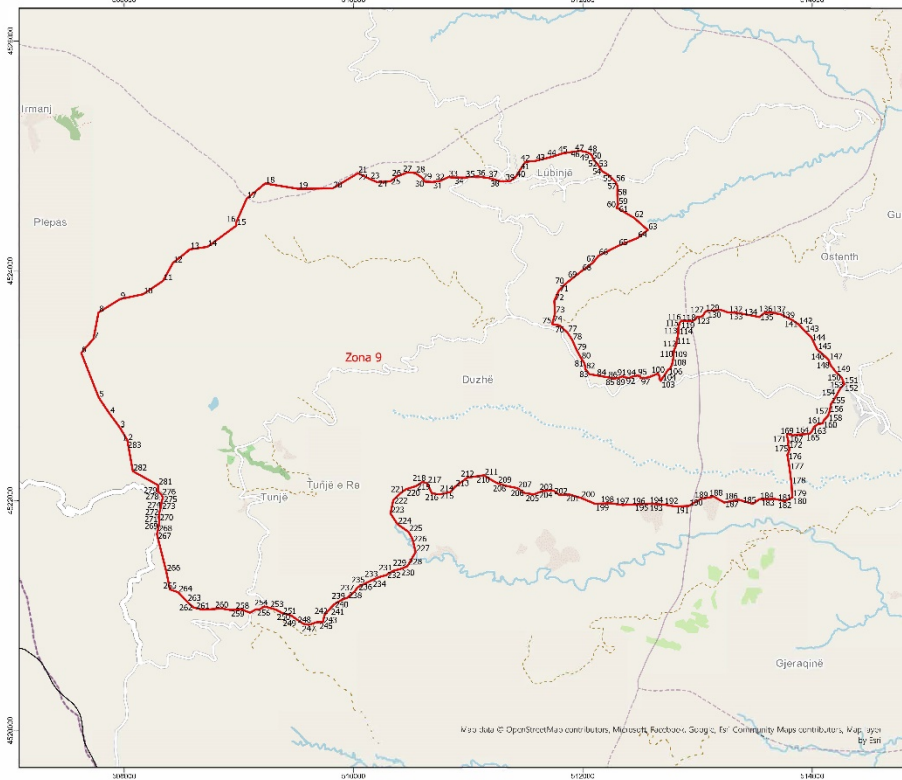
<b>Zona 7</b>					
<b>Njësia Administrative Pishaj</b>					
<b>Nr</b>	<b>Koordinata X</b>	<b>Koordinata Y</b>	<b>Nr</b>	<b>Koordinata X</b>	<b>Koordinata Y</b>
<b>1</b>	521583.69	4527962.65	<b>60</b>	523247.31	4529699.93
<b>2</b>	521591.34	4528005.49	<b>61</b>	523342.56	4529649.04
<b>3</b>	521410.47	4528019.85	<b>62</b>	523354.27	4529599.05
<b>4</b>	521248.39	4528148.49	<b>63</b>	523351.6	4529508.06
<b>5</b>	521216.68	4528288.66	<b>64</b>	523358.04	4529432.02
<b>6</b>	520842.22	4528555.41	<b>65</b>	523392.29	4529358.16
<b>7</b>	520600.19	4528653.03	<b>66</b>	523467.58	4529268.06
<b>8</b>	520586.71	4528954.02	<b>67</b>	523533.48	4529187.13
<b>9</b>	520442.41	4529283.63	<b>68</b>	523657.06	4529093.87
<b>10</b>	520407.96	4529458.39	<b>69</b>	523748.4	4528980.97
<b>11</b>	520284.97	4529628.02	<b>70</b>	523750.98	4528981.52
<b>12</b>	520204.84	4529732.36	<b>71</b>	523888.46	4528850.65
<b>13</b>	520145.81	4529831.68	<b>72</b>	524011.18	4528774.35
<b>14</b>	520044.6	4529938.42	<b>73</b>	524140.9	4528703.43
<b>15</b>	520016.84	4530064.41	<b>74</b>	524213.6	4528677.77
<b>16</b>	519996.35	4530245.74	<b>75</b>	524291.06	4528544.44
<b>17</b>	519965.82	4530384.86	<b>76</b>	524330.95	4528453.07
<b>18</b>	519959.77	4530453.21	<b>77</b>	524329.91	4528389.48
<b>19</b>	519955.9	4530453.07	<b>78</b>	524306.04	4528315.04
<b>20</b>	520006.87	4530478.72	<b>79</b>	524317.26	4528260.42
<b>21</b>	520085.06	4530498.62	<b>80</b>	524355.67	4528144.31
<b>22</b>	520159.52	4530532.74	<b>81</b>	524347.95	4528047.1
<b>23</b>	520227.98	4530571.54	<b>82</b>	524320.77	4527953.19
<b>24</b>	520373.71	4530606.47	<b>83</b>	524281.35	4527848.55
<b>25</b>	520536.12	4530638.03	<b>84</b>	524259.85	4527721.16
<b>26</b>	520672.1	4530694.23	<b>85</b>	524262.58	4527636.42
<b>27</b>	520761.39	4530781.98	<b>86</b>	524251.31	4527540.94
<b>28</b>	520851.79	4530876.87	<b>87</b>	524239.49	4527493.12
<b>29</b>	520942.41	4530951.57	<b>88</b>	524111.93	4527375.11
<b>30</b>	521052.85	4531059.75	<b>89</b>	524055.71	4527349.75
<b>31</b>	521130.32	4531142.62	<b>90</b>	523873.37	4527234.64
<b>32</b>	521215.45	4531178.04	<b>91</b>	523833.7	4527151.19
<b>33</b>	521262.25	4531241.55	<b>92</b>	523740.85	4527086.56
<b>34</b>	521372.44	4531267.75	<b>93</b>	523679.41	4527054.07
<b>35</b>	521461.28	4531291.34	<b>94</b>	523622.52	4527020.2
<b>36</b>	521537.14	4531306.47	<b>95</b>	523505.92	4527082.33
<b>37</b>	521644.87	4531339.78	<b>96</b>	523444.56	4527139.57
<b>38</b>	521715.32	4531308.5	<b>97</b>	523380.63	4527180.23
<b>39</b>	521776.52	4531255.74	<b>98</b>	523344.61	4527193.62
<b>40</b>	521878.35	4531285.42	<b>99</b>	523253.69	4527181.54
<b>41</b>	521917.78	4531162.31	<b>100</b>	523154.75	4527147.3

42	521973.16	4531098.79	101	523149.31	4527150.3
43	522057.26	4531016.59	102	523149.2	4527149.99
44	522131.86	4530934.27	103	523028.06	4527126.54
45	522227.98	4530840.33	104	522909.61	4527108.63
46	522263.01	4530789.64	105	522758.47	4527054.47
47	522336.47	4530703.75	106	522502.53	4526996.37
48	522350.54	4530616	107	522304.86	4526908.57
49	522359.9	4530524.62	108	522117.16	4526914.7
50	522385.69	4530451.26	109	522032.98	4527037.91
51	522437.38	4530398.38	110	521918.41	4527163.53
52	522504.35	4530359.94	111	521890.13	4527223.91
53	522550.03	4530312.94	112	521880.21	4527367.28
54	522589.93	4530252.81	113	521824.22	4527438.38
55	522634.01	4530138.07	114	521784.77	4527509.67
56	522659.55	4530086.09	115	521699.89	4527693.57
57	522660.27	4530082.89	116	521668.22	4527809.1
58	523196.25	4529725.06	117	521620.28	4527899.6
59	523196.66	4529722.86	118	521583.69	4527962.65



<b>Zona 8</b>					
<b>Njësia Administrative Pishaj</b>					
<b>Nr</b>	<b>Koordinata X</b>	<b>Koordinata Y</b>	<b>Nr</b>	<b>Koordinata X</b>	<b>Koordinata Y</b>
1	514361.71	4529964.07	32	512827.05	4530555.14
2	514350.58	4529940.38	33	512928.91	4530805
3	514336.26	4529925	34	512979.86	4530927.75
4	514307.84	4529883.61	35	513113.41	4531077.63
5	514286.16	4529851.43	36	513277.34	4531240.94
6	514260.24	4529791.07	37	513447.06	4531392.91
7	514227.25	4529750.39	38	513498.26	4531297.83
8	514176.08	4529703.43	39	513535.64	4531269.14
9	514114.3	4529653.3	40	513610.56	4531198.53
10	514061.84	4529586.55	41	513714.99	4531093.85
11	514019.07	4529536.64	42	513853.28	4531037.2
12	513967.82	4529497.27	43	514033	4531060.43
13	513879.51	4529440.76	44	514173.18	4531069.97
14	513825.89	4529408.21	45	514276.88	4531028.8
15	513746.53	4529367	46	514349.4	4530936.99
16	513716.18	4529361.34	47	514479.5	4530901.42
17	513641.79	4529349.84	48	514487.67	4530895.89
18	513569.07	4529326.2	49	514515.35	4530814.17
19	513567.66	4529325.69	50	514505.26	4530723.09
20	513509.12	4529421.29	51	514509.96	4530635.9
21	513323.36	4529694.45	52	514525.6	4530567.39
22	513154.84	4529848.69	53	514515.12	4530509.73
23	513067.79	4530054.15	54	514467.9	4530418.23
24	512948.15	4530100.43	55	514463.39	4530325.36
25	512831.86	4530085.87	56	514462.37	4530290.98
26	512643.86	4530091.66	57	514445.43	4530219.74
27	512464.94	4530229.9	58	514445.22	4530171.07
28	512407.57	4530261.6	59	514450.15	4530072.29
29	512489.01	4530354.93	60	514407.42	4530019.33
30	512597.58	4530399.81	61	514362.52	4529964.19
31	512706.09	4530449.04	62	514361.71	4529964.07

**ZONA ME PËRPARËSI ZHVILLIMIN E EKONOMISË MALORE**  
**ZONA 9, NJËSIA ADMINISTRATIVE TUNJË, BASHKIA GRAMSH, QARKU ELBASAN**



Nr./Si Administrative	zona	S' shfaqet (ha)
Letre, Kultur dhe Kodifikat	Zona 1	5080
	Zona 2	2151
	Zona 3	2825
Pikshaj	Zona 4	125
Kodifikat	Zona 5	1180
Sufi	Zona 6	1223
Pikshaj	Zona 7	1081
Pikshaj	Zona 8	229
Turqit	Zona 9	1545
Financj	Zona 10	290
Kultur dhe Kodifikat	Zona 11	1092
Turqit	Zona 12	137
Kultur dhe	Zona 13	894
Financj	Zona 14	302
Financj	Zona 15	614
Financj	Zona 16	111



1:25,000



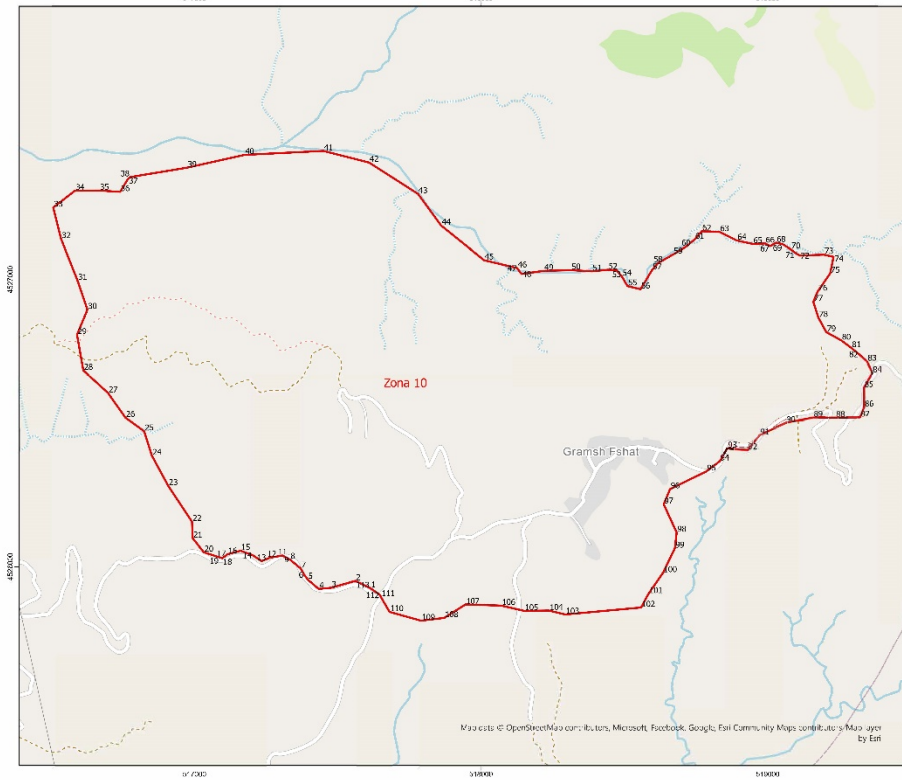
- Legjendë**
- Zona me përparësi zhvillimin e ekonomisë malore
  - Ndërtësia
  - Bashkia Gramsh
  - Izolpse
- Kategoritë e Rrjetit Rrugor**
- Kategoritë C. Rruga Interurbane Dytësore
  - Kategoritë F. Rruge Lokale

\*Zona 9 ndodhet në territorin e Njësia Administrative Turije me sipërfaqe prej 1535 ha.

\*\*Sistemi Koordinativ: KROJSH (Kartiza Referuese Gjeodetike Shqiptare) EPSG:6870

Zona 9											
Njësi Administrative Tunjë											
Nr	Koordinata X	Koordinata Y	Nr	Koordinata X	Koordinata Y	Nr	Koordinata X	Koordinata Y	Nr	Koordinata X	Koordinata Y
1	508028.79	4522520.68	72	511751.12	4523739.1	143	513934.66	4523479.33	214	510843.01	4522075.97
2	508031.12	4522522.64	73	511757.87	4523631.57	144	513991.81	4523423.48	215	510749.43	4522055.59
3	507962.95	4522637.35	74	511736.68	4523554.07	145	514004.50	4523314.64	216	510683.1	4522065.87
4	507874.01	4522757.59	75	511731.06	4523538.54	146	514114.65	4523255.35	217	510643.46	4522153.71
5	507778.1	4522897.96	76	511798.1	4523526.14	147	514143.24	4523226.3	218	510601.96	4522164.28
6	507625.46	4523286.92	77	511865.48	4523464.75	148	514160.72	4523180.16	219	510544.43	4522127.75
7	507731.84	4523409.38	78	511906.9	4523400.81	149	514210.05	4523116.3	220	510459.19	4522101.94
8	507776.38	4523638.93	79	511947.51	4523308.6	150	514258.04	4523070.51	221	510412.67	4522068.3
9	507963.66	4523755.58	80	511982.13	4523245.7	151	514280.14	4523015.39	222	510347.15	4522006.85
10	508165.26	4523798.3	81	512014.35	4523195.21	152	514280.23	4523015.05	223	510322.46	4521889.61
11	508339.08	4523914.8	82	512023.98	4523143.34	153	514243.16	4522972.9	224	510384.15	4521796
12	508424.87	4524070.72	83	512056.56	4523101.58	154	514208.01	4522909.03	225	510479.22	4521729.72
13	508571.74	4524186.91	84	512164.47	4523082.97	155	514164.63	4522842.32	226	510513.59	4521669.49
14	508726.42	4524208.88	85	512282.46	4523063.37	156	514149.36	4522769.69	227	510541.83	4521555.29
15	508978.25	4524394.08	86	512282.72	4523063.61	157	514149.21	4522768.99	228	510475.79	4521440.02
16	508976.63	4524420.52	87	512283.13	4523064.04	158	514136.73	4522738.94	229	510465.63	4521429.24
17	509068.09	4524627.98	88	512283.7	4523064.41	159	514101.71	4522702.37	230	510411.26	4521407.69
18	509229.2	4524761.18	89	512285.64	4523065.32	160	514091.9	4522674.77	231	510344.93	4521390.3
19	509517.47	4524714.43	90	512320.54	4523071.78	161	514050.02	4522668.51	232	510285.94	4521353.99
20	509817.67	4524717.86	91	512347.03	4523082.72	162	514013.43	4522642.05	233	510219.62	4521335.41
21	510038.95	4524850.34	92	512371.48	4523072.36	163	513999.34	4522608.62	234	510161.71	4521308.61
22	510039.99	4524849.84	93	512408.02	4523068.97	164	513979.34	4522586.69	235	510104.98	4521283.01
23	510142.98	4524799.81	94	512429.94	4523079.87	165	513941.07	4522581.19	236	510038.82	4521250.18
24	510206.87	4524772.28	95	512476.21	4523089.52	166	513896.25	4522578.51	237	510009.56	4521211.83
25	510321.57	4524778.89	96	512499.87	4523082.19	167	513862.99	4522577.41	238	509948.4	4521157.67
26	510375.84	4524820.12	97	512502.6	4523068.7	168	513834.15	4522569.84	239	509897.54	4521138.08
27	510470.77	4524858.29	98	512538.03	4523066.78	169	513809.48	4522576.79	240	509830.28	4521098.11
28	510539.71	4524852.01	99	512576.38	4523075	170	513785.23	4522584.34	241	509798.58	4521064.48
29	510596.67	4524812.05	100	512655.82	4523107.05	171	513779.15	4522570.01	242	509746.98	4521005.68
30	510623.56	4524777.04	101	512666.78	4523084.79	172	513792.77	4522521.46	243	509733.41	4520946.12
31	510690.7	4524774.27	102	512671.99	4523054.68	173	513789.56	4522490.53	244	509731.98	4520944.35
32	510755.92	4524783.85	103	512680.84	4523042.75	174	513801.85	4522455.03	245	509731.52	4520944.44
33	510826.19	4524816.44	104	512689.47	4523060.52	175	513796.26	4522424.08	246	509681.35	4520943.87
34	510875.67	4524813.47	105	512719.5	4523102.68	176	513783.45	4522401.36	247	509610.15	4520920.24
35	510972.88	4524812.81	106	512742.82	4523139.11	177	513800.49	4522301.13	248	509562.14	4520929.58
36	511066.28	4524822.71	107	512761.88	4523152.89	178	513820.37	4522147.27	249	509506.21	4520966.96
37	511174.14	4524809.81	108	512777.34	4523184.71	179	513826.19	4522034.03	250	509456.39	4521001.37
38	511280.42	4524781.01	109	512789.11	4523242.48	180	513829.09	4522029.54	251	509377.83	4521023.28
39	511365.18	4524781.98	110	512795.11	4523310.36	181	513827.33	4522029.51	252	509318.16	4521054.53
40	511412.49	4524814.3	111	512816.03	4523359.2	182	513761	4521996.85	253	509268.58	4521068.42
41	511452.37	4524878.33	112	512820.09	4523399.93	183	513676.66	4522016.19	254	509222.83	4521080.06
42	511499.24	4524949.5	113	512831.94	4523450.92	184	513540.35	4522014.64	255	509180.93	4521053.87
43	511585.67	4524957.55	114	512832.47	4523502.92	185	513482.82	4521973.37	256	509152.39	4521055.92
44	511728.31	4524992.73	115	512843.27	4523547.12	186	513357.68	4522009.65	257	509095.71	4521025.57
45	511826.84	4525023.88	116	512858.86	4523567.64	187	513233.24	4521985.03	258	509031.24	4521053.35
46	511980.58	4525046.19	117	512899.59	4523563.58	188	513142.74	4522036.2	259	508925.55	4521049.77
47	512013.6	4525038.69	118	512926.12	4523562.94	189	513032.74	4522017.54	260	508850.56	4521061.98
48	512039.71	4525032.48	119	512926.72	4523562.76	190	512923.23	4521955.38	261	508865.54	4521051.78
49	512057.9	4525023.29	120	512927.7	4523562.9	191	512804.35	4521951.13	262	508604.54	4521071.05
50	512074.77	4525013.7	121	512931.98	4523563.5	192	512708.45	4521967.44	263	508548.1	4521123.87
51	512093.25	4524969.02	122	512961.7	4523567.68	193	512630.08	4521972.34	264	508471.15	4521203.78
52	512095.89	4524968.67	123	512984.15	4523581.5	194	512627.02	4521971.52	265	508399.33	4521228.76
53	512131.71	4524924.94	124	512995.23	4523600.84	195	512574.19	4521974.33	266	508367	4521386.12
54	512169.45	4524867.09	125	513016.74	4523597.69	196	512422.52	4521967.08	267	508285.02	4521710.36
55	512215.66	4524841.13	126	513045.99	4523609.33	197	512345.3	4521963.44	268	508294.03	4521741.58
56	512285.27	4524776.59	127	513058.19	4523629.81	198	512243.04	4521978.82	269	508303.33	4521799.93
57	512301.58	4524739.69	128	513068.19	4523644.62	199	512105.13	4521974.49	270	508304.91	4521825.48
58	512300.78	4524654.92	129	513070.42	4523647.78	200	511983.14	4522025.52	271	508301.4	4521859.7
59	512306.99	4524575.52	130	513083.93	4523652	201	511883.47	4522054.74	272	508308.09	4521901.51
60	512293.8	4524548.39	131	513200.36	4523662.16	202	511795.22	4522050.97	273	508321.82	4521953.68
61	512307.58	4524542.86	132	513271.27	4523638.25	203	511745.12	4522089.03	274	508326.34	4521994.22
62	512446.47	4524461.67	133	513336.62	4523637.23	204	511648.59	4522085.17	275	508337.81	4522026.42
63	512566.33	4524355.43	134	513494.11	4523609.01	205	511574.42	4522056.73	276	508327.91	4522048.11
64	512476.07	4524285.42	135	513538.37	4523598.92	206	511494.29	4522066.85	277	508317.48	4522061.07
65	512308.54	4524217.29	136	513585.62	4523636.54	207	511430.33	4522110.27	278	508304.29	4522070.89
66	512135.68	4524132.54	137	513647.42	4523637.25	208	511339.07	4522128.54	279	508293.96	4522075.13
67	512089.44	4524074.07	138	513721.74	4523623.97	209	511256.02	4522152.43	280	508293.83	4522075.16
68	511990.94	4524001.2	139	513723.52	4523624.03	210	511197.71	4522184.87	281	508295.89	4522135.92
69	511908.9	4523936.8	140	513725.07	4523622.73	211	511139.33	4522222.83	282	508075.57	4522258.5
70	511843.28	4523883.63	141	513826.21	4523574.16	212	510993.33	4522201.85	283	508028.79	4522520.68
71	511791.46	4523830.61	142	513880.89	4523562.36	213	510886.62	4522123.38			

**ZONA ME PËRPARËSI ZHVILLIMIN E EKONOMISË MALORE**  
**ZONA 10, NJËSIA ADMINISTRATIVE PISHAJ, BASHKIA GRAMSH, QARKU ELBASAN**



Njësi Administrative	Zo. m	Sipërfaqe (ha)
Lehtë, Kullë dhe Kullçevat	Zona 1	5500
Kullçevat	Zona 2	2551
Sikëmbërgas	Zona 3	2625
Pishaj	Zona 4	18
Korçëgjat	Zona 5	1736
Sullt	Zona 6	1113
Pishaj	Zona 7	1081
Pishaj	Zona 8	339
Lisë	Zona 9	1525
Kullçevat dhe Kullçevat	Zona 11	1052
Tullë	Zona 12	137
Kullçevat	Zona 13	404
Lehtë	Zona 14	502
Porçan	Zona 15	614
Pishaj	Zona 16	612



1:10.000



**Legjende**

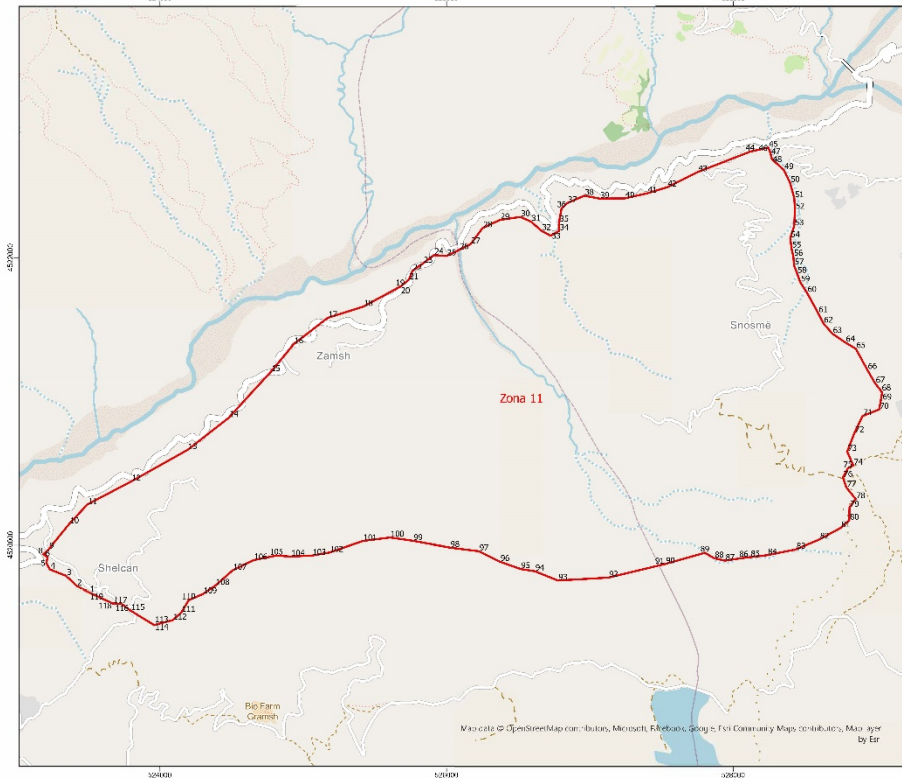
- Zona me përparësi zhvillim e ekonomisë malore
- Njësitë
- Bashkia Gramsh
- Izopse
- Kategoritë e Rrjetit Rrugor
- Kategoritë F. Rruge Lokale

\*Zona 10 ndodhet në territorin e Njësisë Administrative Pishaj me sipërfaqe prej 293 ha.  
 \*\*Sistemi Koordinativ: KRGJSH (Keriza Referuese Gjendëtare Shqiptare) EPSG:6870

<b>Zona 10</b>					
<b>Njësia Administrative Pishaj</b>					
<b>Nr</b>	<b>Koordinata X</b>	<b>Koordinata Y</b>	<b>Nr</b>	<b>Koordinata X</b>	<b>Koordinata Y</b>
1	517613.48	4525925.73	58	518616.82	4527057.83
2	517561.12	4525951.41	59	518669.59	4527087.82
3	517476.23	4525927.09	60	518714.5	4527114.33
4	517432.97	4525923.19	61	518744.72	4527139.54
5	517394.64	4525955.84	62	518769.26	4527168.07
6	517382.77	4525972.73	63	518831.45	4527165.39
7	517369.93	4525994.86	64	518891.69	4527135.57
8	517332.42	4526026.01	65	518947.21	4527123.77
9	517332.06	4526025.91	66	518990.14	4527125.39
10	517332.03	4526026.17	67	519007.84	4527116.11
11	517307.06	4526039.51	68	519028.54	4527127.92
12	517264.8	4526032.7	69	519051.28	4527123.08
13	517233.8	4526020.18	70	519079.72	4527105.36
14	517202.91	4526040.75	71	519095.59	4527093.5
15	517160.4	4526056.33	72	519110.98	4527083.96
16	517115.28	4526044.13	73	519195.14	4527087.04
17	517101.16	4526033.48	74	519229.13	4527079.52
18	517096.95	4526030.3	75	519217.36	4527021.75
19	517086.01	4526033.78	76	519174	4526959.09
20	517032.36	4526050.88	77	519158.59	4526922.75
21	516993.58	4526099.57	78	519176.17	4526867.57
22	516991.07	4526157.09	79	519203.87	4526817.03
23	516907.96	4526282.37	80	519256.19	4526788.24
24	516851.07	4526387.53	81	519290.39	4526762.64
25	516824.11	4526472.61	82	519317.77	4526740.35
26	516758.59	4526520.13	83	519346.17	4526714.96
27	516698.22	4526604.83	84	519364.29	4526674.55
28	516611.93	4526683.67	85	519334.86	4526623
29	516590.1	4526807.79	86	519335.63	4526555.91
30	516626.22	4526895.45	87	519321.91	4526520.43
31	516591.64	4526997.16	88	519235.39	4526519.44
32	516534.31	4527141.29	89	519157.68	4526520.32
33	516507.07	4527250.51	90	519062.53	4526501.58
34	516582.51	4527308.91	91	518971.2	4526458.15
35	516667.89	4527309.89	92	518929.41	4526406.46
36	516740.35	4527305.15	93	518858.7	4526412.72
37	516767.68	4527350.01	94	518832.72	4526368.27
38	516775.16	4527356.61	95	518785.45	4526332.41
39	516973.8	4527389.49	96	518659	4526270.93
40	517174.46	4527434.14	97	518636.66	4526217.7
41	517449.58	4527447.87	98	518681.93	4526119.32

42	517608.86	4527407.34	99	518675.49	4526064.51
43	517779.52	4527298.12	100	518634.08	4525979.27
44	517860.18	4527187.87	101	518583.7	4525906.29
45	518009.78	4527067.82	102	518557.76	4525858.31
46	518125.85	4527040.2	103	518293.15	4525834.1
47	518126.28	4527039.19	104	518236.49	4525847.58
48	518140.57	4527019.8	105	518149.97	4525846.59
49	518218.17	4527030.68	106	518070.29	4525865.11
50	518313.08	4527032.89	107	517944.87	4525868.97
51	518386.59	4527029.21	108	517871.23	4525822.22
52	518441.91	4527034.36	109	517790.11	4525812.46
53	518472.44	4527032.45	110	517680.28	4525843
54	518490.77	4527011.19	111	517649.66	4525895.62
55	518510.37	4526977.5	112	517647.45	4525901.99
56	518555.7	4526966.72	113	517613.48	4525925.73
57	518595.63	4527032.73			

**ZONA ME PËRPARËSI ZHVILLIMIN E EKONOMISË MALORE**  
**ZONA 11, NJËSIA ADMINISTRATIVE KUKUR DHE KODOVJAT, BASHKIA GRAMSH, QARKU ELBASAN**



**Legjendë**

- Zona me përparësi zhvillimin e ekonomisë malore
- Ndërtësia
- Bashkia Gramsh
- Izopisat

**Kategoritë e Rrjetit Rrugor**

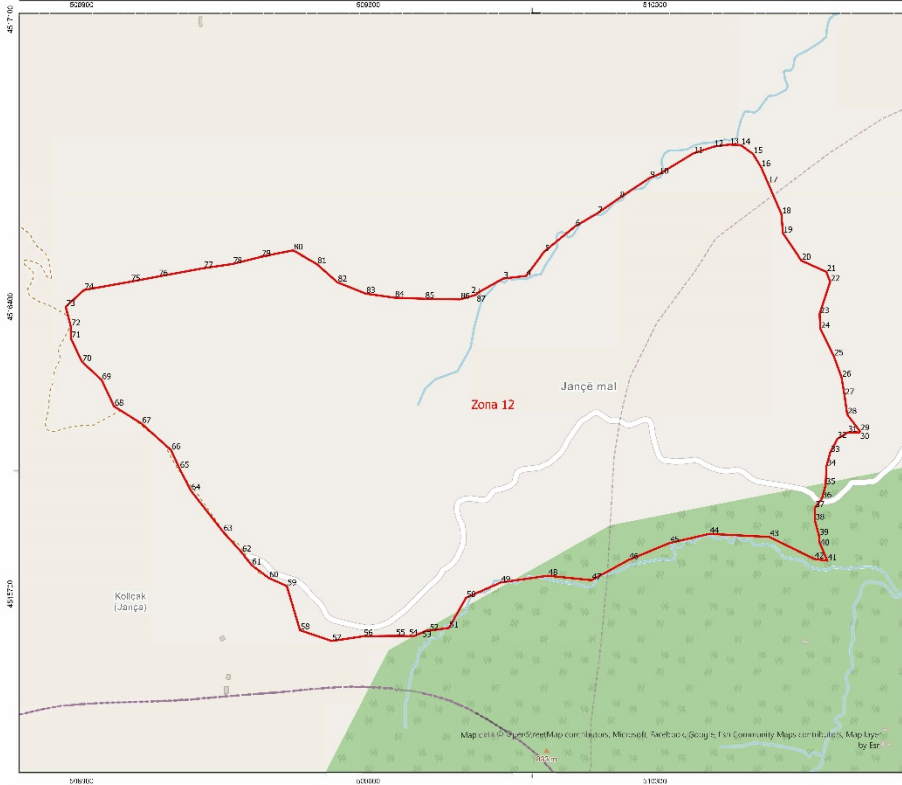
- Kategoria C: Rruge Interurbane Dytësore
- Kategoria F: Rruge Lokale

\*Zona 11 ndodhet në territorin e Njësisë Administrative Kukur dhe Kodovjat me sipërfaqe prej 1032 ha.

\*\*Sistemi Koordinativ: KRQJSH (Kartiza Referuese Gjendëzëse Shqiptare) EPSG:6870

Zona 11					
Njësia Administrative Kukur dhe Kodovjat					
Nr	Koordinata X	Koordinata Y	Nr	Koordinata X	Koordinata Y
1	523507.85	4519670.23	61	528591.68	4521615.95
2	523419.15	4519717.81	62	528629	4521543.38
3	523346.03	4519787.05	63	528692.01	4521471.11
4	523232.5	4519832.1	64	528781.92	4521409.95
5	523207.12	4519877.01	65	528855.42	4521366.18
6	523216.84	4519916.68	66	528935.49	4521219.75
7	523217.33	4519916.93	67	528990.65	4521124.41
8	523187.37	4519938.05	68	529033.17	4521070.82
9	523224.27	4519972.47	69	529038.68	4521058.3
10	523367.54	4520148.44	70	529018.26	4520944.03
11	523493.84	4520283.53	71	528902.75	4520899.2
12	523800	4520443.93	72	528846.07	4520782.53
13	524192.65	4520663.41	73	528795.35	4520651.43
14	524480.64	4520887.52	74	528837.05	4520556.18
15	524773.39	4521204.66	75	528799.57	4520535.45
16	524933.89	4521398.25	76	528765.5	4520471.25
17	525170.05	4521581.09	77	528789.5	4520401.91
18	525419.03	4521659.48	78	528854.23	4520321.43
19	525676.73	4521799.13	79	528811.39	4520262.93
20	525677.77	4521798.21	80	528809.51	4520172.99
21	525737.01	4521847.19	81	528749.2	4520120.09
22	525762.48	4521909.37	82	528602.18	4520040.1
23	525835.69	4521960.19	83	528437.63	4519971.51
24	525911.2	4522018.17	84	528237.95	4519931.53
25	525999.33	4522012.04	85	528118.3	4519917.55
26	526086.93	4522053.5	86	528072.84	4519912.24
27	526167.41	4522092.5	87	527942.53	4519893.35
28	526251.81	4522205.34	88	527866.92	4519909.89
29	526372.56	4522261.46	89	527802.46	4519948.12
30	526515.14	4522282.13	90	527526.5	4519870.3
31	526589.3	4522249.65	91	527502.3	4519864.5
32	526661.43	4522186.21	92	527129.31	4519775.1
33	526726.09	4522151.24	93	526776.94	4519754.63
34	526785.21	4522185.24	94	526615.75	4519819.54
35	526784.53	4522244.74	95	526516.24	4519834.96
36	526802.45	4522342.53	96	526372.18	4519885.74
37	526842.51	4522378.69	97	526225.11	4519958.56
38	526960.93	4522430.03	98	526023.39	4519983.86
39	527068.27	4522409.83	99	525766.25	4520030.59
40	527244.38	4522411.84	100	525605.95	4520053.59
41	527401.08	4522446.95	101	525415.83	4520029.35
42	527538.65	4522488.99	102	525182.2	4519949.43
43	527752.35	4522595.06	103	525061.03	4519928.73
44	528117.31	4522736.69	104	524912.11	4519921.51
45	528244.71	4522765.56	105	524812.7	4519928.65
46	528246.06	4522762.37	106	524653.03	4519896.48
47	528258.59	4522730.07	107	524507.59	4519825.84
48	528269.93	4522684.24	108	524387.4	4519719.62
49	528353.24	4522609.49	109	524299.77	4519660.67
50	528396.16	4522520.76	110	524200.92	4519618.15
51	528425.76	4522414.31	111	524149.48	4519532.03
52	528430.74	4522333.26	112	524089.38	4519478.92
53	528425.29	4522218.3	113	524012.35	4519458.72
54	528397.85	4522135.53	114	523960.09	4519444.33
55	528406.78	4522063.98	115	523796.15	4519544.56
56	528419.57	4522008.71	116	523734.92	4519590.76
57	528424.34	4521946.58	117	523673.72	4519595.27
58	528442.45	4521899.47	118	523670.43	4519595.07
59	528467.58	4521829.47	119	523507.85	4519670.23
60	528514.37	4521757.01			

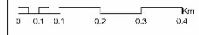
**ZONA ME PËRPARËSI ZHVILLIMIN E EKONOMISË MALORE**  
**ZONA 12, NJËSIA ADMINISTRATIVE TUNJË, BASHKIA GRAMSH, QARKU ELBASAN**



Niveli Administrativ	Zona	Vlerë Ekip (ha)
Lehtë, Rikuj dhe Kodocajt	Zona 2	1670
Gaku	Zona 3	2451
Dërrështecës	Zona 5	2325
Pishaj	Zona 4	195
Obotocaj	Zona 7	1180
Ujë	Zona 6	1791
Pishaj	Zona 7	2081
Pishaj	Zona 8	121
Tungë	Zona 9	1132
Pishaj	Zona 10	98
Kullar dhe Kodocajt	Zona 11	1257
Tungë	Zona 12	137
Kullhavë	Zona 13	494
Lishtë	Zona 14	762
Porocaj	Zona 15	614
Pishaj	Zona 16	611



1:7,000



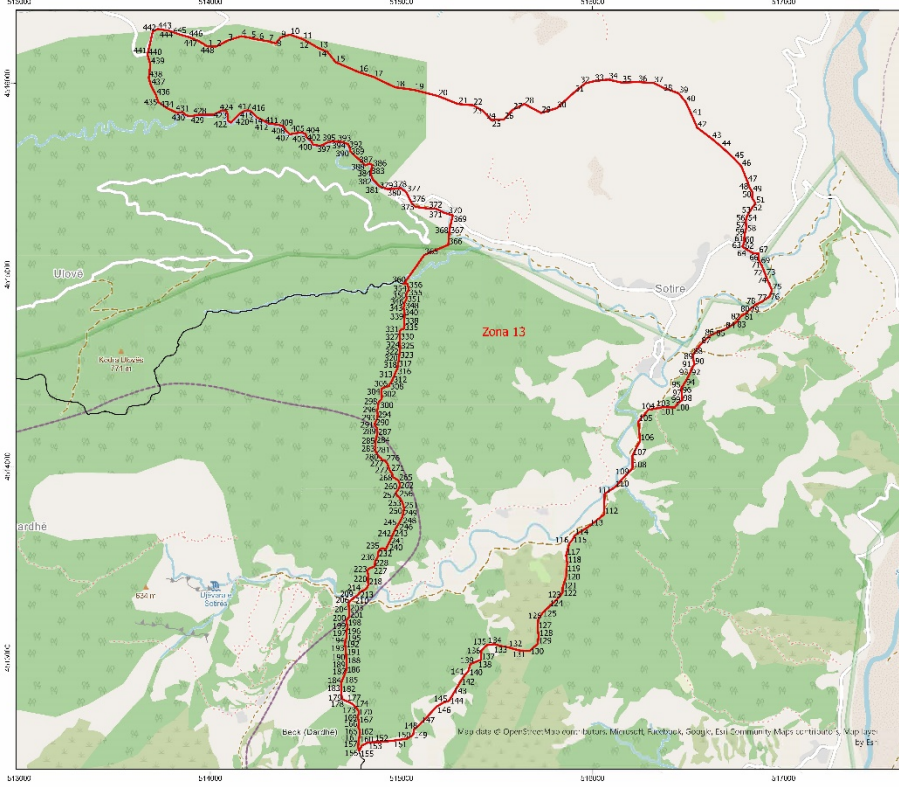
- Legjendë**
- Zona me përparësi zhvillimin e ekonomisë malore
  - Bashkia Gramsh
  - Izogje
- Kategorië e Rrjetit Rrugor
- Kategorië C. Rruga Interurbane Dyfisore

\*Zona 12 ndodhet në territorin e Njësia Administrative Tunjë me sipërfaqe prej 137 ha.

\*\*Sistemi Koordinativ: KRQJSH (Koniza Referuese Gjeshëzore Shqiptare) EPSG:6870

<b>Zona 12</b>					
<b>Njësia Administrative Tunjë</b>					
<b>Nr</b>	<b>Koordinata X</b>	<b>Koordinata Y</b>	<b>Nr</b>	<b>Koordinata X</b>	<b>Koordinata Y</b>
1	509863.86	4516429.87	45	510335.85	4515824.35
2	509865.28	4516433.34	46	510235.94	4515783.67
3	509929.1	4516469.1	47	510145.27	4515733.98
4	509985.48	4516475.59	48	510038.7	4515744.93
5	510029.57	4516534.48	49	509923.31	4515728.41
6	510104.79	4516595.68	50	509838.58	4515690.94
7	510158.93	4516627.44	51	509796.84	4515617.47
8	510213	4516665.04	52	509748.25	4515610.84
9	510287.36	4516714.28	53	509745.85	4515612.13
10	510309.64	4516722.77	54	509710.06	4515597.33
11	510393.45	4516773.91	55	509666.09	4515598.02
12	510443.44	4516790.45	56	509587.69	4515597.13
13	510481.4	4516795.44	57	509510.6	4515585.56
14	510509.55	4516794.24	58	509433.08	4515612
15	510539.45	4516772.54	59	509400.96	4515719.74
16	510558.82	4516740.82	60	509356.78	4515739.43
17	510576	4516701.48	61	509314.84	4515771.03
18	510608.8	4516625.82	62	509290.73	4515801.65
19	510612.36	4516579.48	63	509245.01	4515852.21
20	510657.22	4516513.08	64	509166.65	4515952.3
21	510718.36	4516485.65	65	509138.7	4516006.63
22	510727.76	4516461.42	66	509117.99	4516051.54
23	510702.05	4516382.81	67	509045.98	4516116.06
24	510703.98	4516346.34	68	508978.97	4516158.07
25	510736.68	4516279.8	69	508948.54	4516221.87
26	510755.51	4516228.31	70	508900.51	4516266.47
27	510762.86	4516184.3	71	508873.73	4516323.19
28	510769.47	4516137.99	72	508873.39	4516352.89
29	510800.34	4516097.55	73	508860.97	4516400.27
30	510799.76	4516094.47	74	508905.65	4516441.17
31	510770.06	4516094.14	75	509019.46	4516461.48
32	510745.29	4516078.41	76	509087.04	4516474.13
33	510727.85	4516044.95	77	509197.29	4516494.39
34	510718.73	4516011.58	78	509268.46	4516504.71
35	510716.87	4515966.41	79	509338.35	4516522.14
36	510707.74	4515933.04	80	509416.59	4516537.29
37	510690.18	4515910.27	81	509473.99	4516504.68
38	510690.54	4515879.38	82	509524.39	4516460.1
39	510700.46	4515842.67	83	509593.62	4516432.38
40	510701.84	4515826.05	84	509663.82	4516422.49
41	510720.85	4515781.63	85	509737.51	4516419.77
42	510689.08	4515785.8	86	509824.25	4516418.38
43	510578.98	4515839.29	87	509863.86	4516429.87
44	510432.91	4515846.74			

**ZONA ME PËRPARËSI ZHVILLIMIN E EKONOMISË MALORE**  
**ZONA 13, NJËSIA ADMINISTRATIVE KUSHOVË, BASHKIA GRAMSH, QARKU ELBASAN**



Njësia Administrative	Zona	Tipi (haqje (t.h))
Trëzit, Kërrat dhe Kodinjat	Zona 1	9940
Novaci	Zona 2	7149
Sufitë dhe q. n.	Zona 3	2823
Pishaj	Zona 4	195
Kudobujt	Zona 5	1183
Sufitë	Zona 6	1292
Pishaj	Zona 7	1080
Pishaj	Zona 8	235
Tingje	Zona 9	1534
Pishaj	Zona 10	258
Kakar dhe Kodinjat	Zona 11	1031
Tingje	Zona 12	117
Kushovë	Zona 13	451
Lemë	Zona 14	752
Porocan	Zona 15	814
Pishaj	Zona 16	611



- Legjendë**
- Zona me përparësi zhvillimin e ekonomisë malore
  - Ndërtësia
  - Bashkia Gramsh
  - Izolime
  - Kategoritë e Rrjetit Rrugor
    - Kategoritë C: Rruge Interurbane Dytësore
    - Kategoritë E: Rruge Lokale

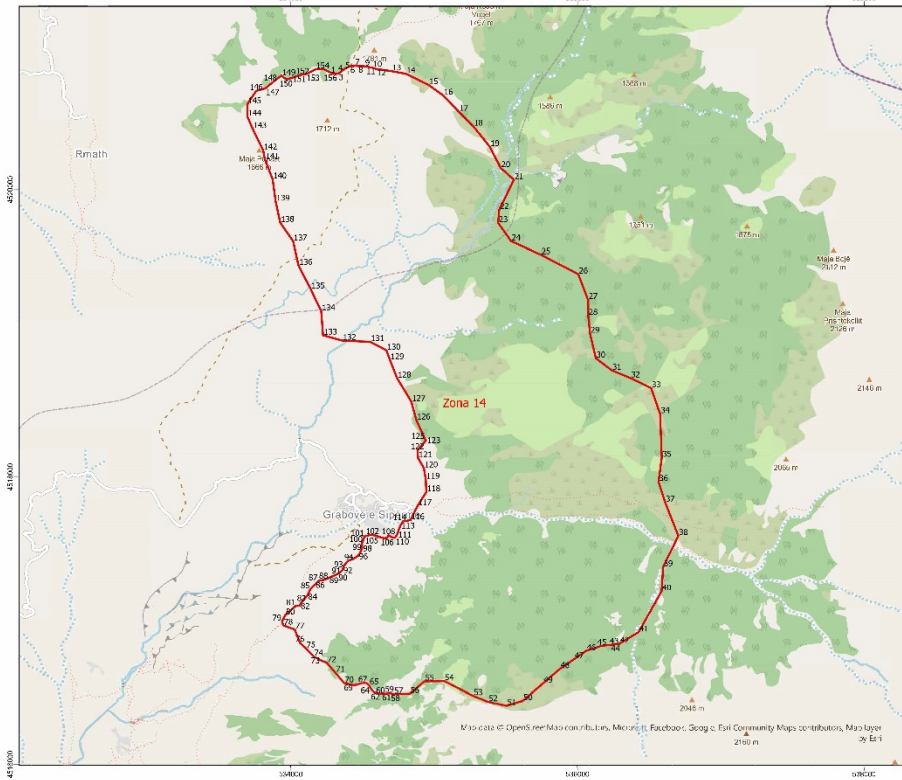
\*Zona 13 ndodhet në territorin e Njësisë Administrative Kushovë me sipërfaqe prej 494 ha.

\*\*Sistemi Kac dritave: «RCJSH (Komiza Rrafuese Gjendëzishë Shqiptare) EPSC 67C»

Zona 13											
Njësia Administrative Kushovë											
Nr	Koordinata X	Koordinata Y	Nr	Koordinata X	Koordinata Y	Nr	Koordinata X	Koordinata Y	Nr	Koordinata X	Koordinata Y
1	513985.09	4516193.66	113	515983.23	4513688.46	225	514829	4513465	337	515016.16	4514737.23
2	514030.72	4516192.66	114	515906.54	4513639.3	226	514841	4513471	338	515015.5	4514749.75
3	514091.2	4516223.76	115	515895.09	4513617.35	227	514851	4513474	339	515014.65	4514765.15
4	514162.41	4516246.63	116	515878.57	4513598.02	228	514859	4513478	340	515016.63	4514784.65
5	514211.18	4516237.3	117	515861.74	4513535.64	229	514862	4513492	341	515016.81	4514798.36
6	514253.11	4516227.89	118	515867.79	4513495.05	230	514863	4513506	342	515014.42	4514815.44
7	514303.38	4516220.1	119	515861.84	4513456.71	231	514870	4513516	343	515011.77	4514824.89
8	514343.04	4516209.15	120	515861.4	4513425.61	232	514877	4513529	344	515010.51	4514831.31
9	514367.78	4516239.84	121	515843.71	4513368.81	233	514877	4513542	345	515015.2	4514836.11
10	514417.03	4516254.85	122	515843.23	4513340.89	234	514880	4513555	346	515015.97	4514842.72
11	514482.69	4516231.27	123	515818.06	4513311.11	235	514889	4513568	347	515014.86	4514850.84
12	514519.41	4516211.92	124	515772.3	4513268.33	236	514899	4513572	348	515018.15	4514859.34
13	514565.34	4516184.31	125	515736.82	4513233.64	237	514906	4513573	349	515021.96	4514866.66
14	514612.71	4516165.08	126	515715.67	4513200.71	238	514918	4513566	350	515027.62	4514875.53
15	514655.13	4516111.58	127	515713.03	4513152.05	239	514924	4513577	351	515027.19	4514883.66
16	514776.6	4516059.4	128	515718.25	4513113.84	240	514932	4513596	352	515024.7	4514893.45
17	514853	4516034.28	129	515712.33	4513073.91	241	514942	4513616	353	515026.46	4514903.12
18	514966.86	4515979.89	130	515670.5	4513036.76	242	514950	4513633	354	515031.28	4514911.14
19	515067.25	4515966.18	131	515615.45	4513040.11	243	514959	4513652	355	515035.59	4514918.64
20	515191.99	4515934.19	132	515558.66	4513056.21	244	514969	4513674	356	515037.5	4514930
21	515296.42	4515892.68	133	515510.72	4513065.23	245	514979	4513690	357	515036.06	4514937.27
22	515374.46	4515886.15	134	515488.94	4513072.94	246	514988	4513705	358	515033.25	4514945.7
23	515426.77	4515857.04	135	515447.7	4513067.7	247	514995	4513718	359	515031.98	4514953.65
24	515470.01	4515809.27	136	515418.53	4513038.67	248	515004	4513735	360	515025.33	4514957.47
25	515471.06	4515809.31	137	515415.89	4512990.8	249	515008	4513749	361	515021.11	4514955.89
26	515536.81	4515811.89	138	515397.63	4512984.21	250	515010	4513761	362	515012.67	4514953.6
27	515582.64	4515862.53	139	515360.34	4512967.84	251	515014	4513780	363	515010.67	4514953.91
28	515643.55	4515892.93	140	515350.39	4512931.85	252	515010	4513798	364	515017.45	4514961.34
29	515731.33	4515845.67	141	515331.48	4512911.71	253	515006	4513810	365	515119.78	4515103.59
30	515812.73	4515870.73	142	515308.75	4512877.96	254	515003	4513818	366	515245.4	4515157
31	515906.44	4515955.33	143	515268.86	4512809.74	255	514996	4513830	367	515251.51	4515233.93
32	515961.61	4516000.51	144	515249.29	4512777.62	256	514987	4513840	368	515251.65	4515234
33	516009.74	4516012.2	145	515222.28	4512769.34	257	514977	4513849	369	515268.96	4515311.24
34	516082.04	4516020.45	146	515185.84	4512748.99	258	514972	4513859	370	515243.36	4515318.4
35	516152.77	4516004.55	147	515101.52	4512658.45	259	514975	4513871	371	515219.14	4515326.48
36	516236.27	4516007.35	148	515066.82	4512628.85	260	514982	4513878	372	515179.37	4515346.56
37	516319.86	4516002.74	149	515061.31	4512599.59	261	514987	4513885	373	515171	4515346.46
38	516366.53	4515979.14	150	515030.4	4512579.78	262	514989	4513891	374	515142.88	4515346.14
39	516450.42	4515948.54	151	514956.55	4512569.2	263	514991	4513898	375	515073.59	4515355.24
40	516488.07	4515902.56	152	514896.28	4512562.68	264	514992	4513910	376	515052.03	4515378.56
41	516520.42	4515832.39	153	514824.29	4512559.91	265	514984	4513926	377	515025.57	4515432.25
42	516547.13	4515769.57	154	514793.33	4512543.98	266	514973	4513935	378	514996.42	4515453.96
43	516623.91	4515711.05	155	514781.92	4512520.5	267	514962	4513941	379	514959.98	4515449.75
44	516674.51	4515668.93	156	514778.12	4512516.61	268	514957	4513942	380	514925.01	4515448.59
45	516742.05	4515606.58	157	514773.72	4512533.89	269	514954	4513952	381	514886.08	4515462.59
46	516779.63	4515566.17	158	514774.02	4512544.48	270	514951	4513965	382	514849.92	4515499.44
47	516811.91	4515485.27	159	514775.53	4512560.16	271	514943	4513973	383	514841.28	4515523.67
48	516819.99	4515459.58	160	514777.9	4512575.85	272	514938	4513982	384	514843.1	4515551.52
49	516836.85	4515432.03	161	514779.47	4512586.45	273	514934	4513992	385	514843.22	4515553.35
50	516834.74	4515403.29	162	514780.6	4512598.74	274	514930	4514005	386	514848.31	4515573.93
51	516852.59	4515374.3	163	514783.44	4512609.78	275	514925	4514018	387	514832.26	4515581.35
52	516835.82	4515351.24	164	514780.72	4512625.41	276	514918	4514026	388	514811.94	4515572.37
53	516816.14	4515319.59	165	514774.65	4512637.62	277	514909	4514034	389	514731.11	4515645.29
54	516808.63	4515306.88	166	514775.38	4512648.21	278	514899	4514033	390	514731.22	4515645.5
55	516803.83	4515291.51	167	514777.78	4512660.09	279	514895	4514041	391	514733.08	4515653.31
56	516802.04	4515280.52	168	514775.94	4512672.77	280	514884	4514050	392	514721.56	4515682.37
57	516802.78	4515272.11	169	514772.78	4512690.09	281	514866	4514075	393	514690.28	4515694.18
58	516804.59	4515245.01	170	514773.51	4512700.26	282	514863	4514094	394	514658.14	4515695.76
59	516799.42	4515226.21	171	514777.17	4512713.84	283	514865	4514114	395	514632.83	4515695.96
60	516793.88	4515194.26	172	514775.77	4512724.84	284	514864	4514127	396	514613.42	4515691.36
61	516794.63	4515173.94	173	514765.88	4512738.27	285	514867	4514144	397	514589.24	4515678.43

62	516791.98	4515161.95	174	514754.3	4512752.11	286	514872	4514162	398	514588.66	4515678.27
63	516782.97	4515148.29	175	514744.03	4512761.3	287	514873	4514181	399	514572.75	4515673.86
64	516805.46	45151533	176	514733.81	4512766.69	288	514872	4514195	400	514537.15	4515680.27
65	516834.76	4515116.19	177	514716.78	4512774.96	289	514872	4514201	401	514532.93	4515690.19
66	516848.96	4515111.57	178	514702.75	4512780.31	290	514863	4514213	402	514530.15	4515696.74
67	516868.33	4515113.88	179	514692.53	4512786.12	291	514860	4514219	403	514504.6	4515717.86
68	516869.15	4515080.17	180	514688.21	4512793.26	292	514861	4514226	404	514498.06	4515737.25
69	516880.11	4515056.53	181	514686.25	4512816.53	293	514867	4514237	405	514476.08	4515743.81
70	516884.66	4515054.06	182	514685.14	4512839.8	294	514874	4514253	406	514438.67	4515738.52
71	516884.39	4515052.73	183	514684.45	4512863.07	295	514876	4514274	407	514416.82	4515734.37
72	516892.98	4515032.3	184	514688.88	4512883.02	296	514873	4514294	408	514395.2	4515752.62
73	516907.07	4514997.48	185	514699.62	4512906.85	297	514876	4514304	409	514384.24	4515775.37
74	516915.71	4514973.25	186	514709.51	4512930.67	298	514878	4514322	410	514356.4	4515784.29
75	516939.1	4514921.81	187	514713.11	4512948.49	299	514879	4514332	411	514331.55	4515787.42
76	516927.32	4514888.22	188	514713.3	4512968.81	300	514885	4514340	412	514304.74	4515791
77	516888.08	4514861.92	189	514712.29	4512983.62	301	514894	4514350	413	514273.89	4515807.68
78	516856.32	4514847.12	190	514711.22	4513003.5	302	514898	4514361	414	514244.04	4515822.92
79	516821.66	4514819.35	191	514709.61	4513032.69	303	514898	4514375	415	514229.75	4515837.84
80	516808.15	4514803.99	192	514707.68	4513053.84	304	514894	4514392	416	514214	4515853.72
81	516808.12	4514803.52	193	514704.94	4513071.16	305	514897	4514406	417	514195.93	4515859.84
82	516777.19	4514784.62	194	514706.81	4513092.77	306	514908	4514413	418	514175.06	4515854.25
83	516751.71	4514752.4	195	514713.01	4513105.97	307	514922	4514416	419	514151.38	4515840.35
84	516696.59	4514718.32	196	514712.74	4513129.67	308	514937	4514421	420	514130.22	4515818.21
85	516642.85	4514697.17	197	514715.07	4513147.9	309	514938	4514429	421	514107.61	4515795.08
86	516612.61	4514681.62	198	514717.4	4513166.55	310	514946	4514439	422	514091.42	4515806.58
87	516568	4514640.63	199	514712.92	4513188.09	311	514949	4514444	423	514092.57	4515833.84
88	516526.27	4514584.83	200	514714.89	4513200.82	312	514954	4514455	424	514084.54	4515855.16
89	516528.12	4514555.96	201	514726.16	4513214.91	313	514958	4514464	425	514060.17	4515858.78
90	516534.07	4514531.93	202	514725.91	4513237.35	314	514964	4514477	426	514015.66	4515836.37
91	516520.22	4514515.57	203	514726.18	4513250.47	315	514970	4514494	427	513975.27	4515836.4
92	516512.84	4514495.72	204	514725.14	4513267.82	316	514977	4514508	428	513942.66	4515836.51
93	516503.95	4514475.09	205	514723.27	4513283.46	317	514981	4514520	429	513894.58	4515828.18
94	516485.33	4514441.42	206	514731.14	4513298.37	318	514982	4514532	430	513872.61	4515834.25
95	516465.16	4514410.02	207	514737.44	4513303.1	319	514983	4514539	431	513854.43	4515849.62
96	516466.12	4514391.78	208	514745.82	4513309.97	320	514985	4514548	432	513830.62	4515846.91
97	516468.69	4514366.72	209	514751.25	4513316.38	321	514987	4514559	433	513830.16	4515844.56
98	516469.68	4514346.96	210	514755.46	4513318.97	322	514990	4514591	434	513772.62	4515871.6
99	516445.54	4514329.96	211	514764.29	4513323.72	323	514991	4514601	435	513727.71	4515902.65
100	516431.32	4514310.02	212	514771.01	4513328.88	324	514993	4514617	436	513716.18	4515937.78
101	516430.76	4514307.68	213	514779.35	4513339.98	325	514993	4514631	437	513689.6	4515989.46
102	516427.75	4514308.62	214	514790.68	4513349	326	514992	4514647	438	513678.02	4516028.31
103	516367.39	4514309.87	215	514800.36	4513353.34	327	514992	4514660	439	513686.49	4516098.95
104	516291.64	4514295.39	216	514810.89	4513358.54	328	514992	4514668	440	513672.97	4516145.2
105	516239.78	4514234.45	217	514820.1	4513367.12	329	514992	4514678	441	513671.86	4516153.56
106	516248.72	4514133.34	218	514826.71	4513381.58	330	514991	4514685	442	513699.07	4516271.76
107	516208.71	4514056.97	219	514825.29	4513394.69	331	514991	4514698	443	513724.02	4516284.21
108	516209.47	4513990.8	220	514824.65	4513414.16	332	514992	4514705	444	513784.19	4516275.01
109	516172.91	4513953.39	221	514824.98	4513422.2	333	514996	4514714	445	513834.58	4516257.33
110	516117.16	4513892.42	222	514826.54	4513433.65	334	515004	4514718	446	513887.22	4516241.97
111	516063.06	4513856.76	223	514823.86	4513445.9	335	515013	4514720	447	513936.1	4516222.76
112	516060.39	4513749.68	224	514822.07	4513454.77	336	515014	4514722	448	513985.09	4516193.66

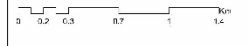
**ZONA ME PËRPARËSI ZHVILLIMIN E EKONOMISË MALORE**  
**ZONA 14, NJËSIA ADMINISTRATIVE LENIE, BASHKIA GRAMSH, QARKU ELBASAN**



Nr. i Bash. Administrative	Zona	Sipërfaqja (Ha)
1	Zona 1	2500
2	Zona 2	211.1
3	Zona 3	2825
4	Zona 4	125
5	Zona 5	1186
6	Zona 6	1293
7	Zona 7	1581
8	Zona 8	235
9	Zona 9	1535
10	Zona 10	298
11	Zona 11	1122
12	Zona 12	137
13	Zona 13	1291
14	Zona 14	762
15	Zona 15	611
16	Zona 16	611



1:20,000



**Legjendë**

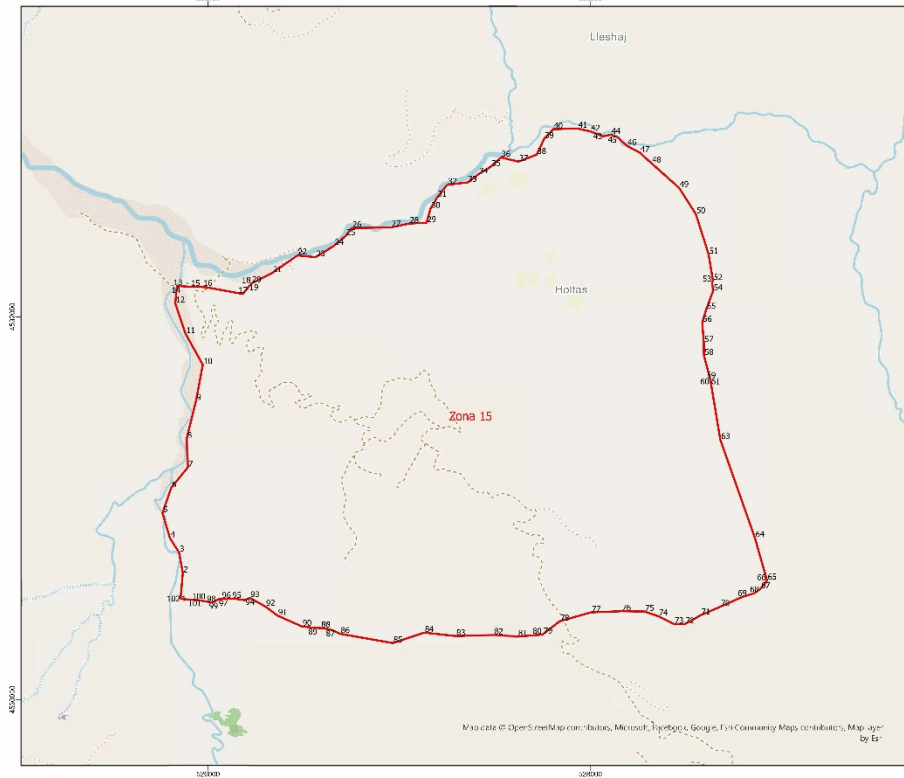
- Zona me përparësi zhvillimin e ekonomisë malore
- Ndërtësia
- Bashkia Gramsh
- Izotipsat
- Kategoritë e Rrjetit Krugor
  - Kategoria C: Rruge Interurbane Dytësore
  - Kategoria E: Rruge Lokale

\*Zona 14 ndodhet në territorin e Njësisë Administrative Lenie me sipërfaqe prej 762 ha.

\*\*Sistemi Koordinues: KROJSH (Koriza Referuese Qendrore Shqiptare) EPSG:6870

Zona 14								
Njësia Administrative Lenie								
Nr	Koordinata X	Koordinata Y	Nr	Koordinata X	Koordinata Y	Nr	Koordinata X	Koordinata Y
1	534294.69	4520806.68	53	535270.74	4516476.82	105	534615.07	4517583.78
2	534296.41	4520806.34	54	535069.98	4516579.09	106	534648.46	4517574.03
3	534329.9	4520808.34	55	534932.18	4516577.52	107	534670.86	4517575.74
4	534347.01	4520819.56	56	534828.61	4516490.79	108	534680.77	4517594.66
5	534374.17	4520841.34	57	534714.57	4516489.49	109	534706.97	4517580.49
6	534410.7	4520859.27	58	534714.19	4516489.34	110	534726.54	4517577.09
7	534442.3	4520862.74	59	534692.14	4516496.18	111	534740.75	4517599.68
8	534466.91	4520861.05	60	534661.89	4516491.85	112	534751.26	4517629.46
9	534513.83	4520859.32	61	534631.6	4516491.5	113	534763.91	4517662.15
10	534570.46	4520848.95	62	534584.47	4516498.94	114	534783.09	4517692.75
11	534595.7	4520840.48	63	534568.37	4516513.11	115	534797.56	4517692.92
12	534595.81	4520840.35	64	534556.21	4516530.51	116	534834.3	4517700.98
13	534702.86	4520825.13	65	534544.82	4516550.31	117	534885.14	4517801.38
14	534802.4	4520806.95	66	534527.11	4516565.26	118	534944.89	4517896.35
15	534960.57	4520728.74	67	534500.69	4516564.96	119	534940.84	4517984.51
16	535063.51	4520655.41	68	534495.5	4516564.13	120	534927.78	4518063.44
17	535169.61	4520546.25	69	534439.16	4516549.36	121	534887.45	4518132.93
18	535272.88	4520442.57	70	534371.88	4516564.48	122	534883.78	4518187.64
19	535387.64	4520300.4	71	534309.23	4516637.94	123	534943.8	4518258.28
20	535463.83	4520152.26	72	534250.18	4516706.14	124	534943.92	4518258.58
21	535555.82	4520070.53	73	534209.36	4516723.33	125	534937.69	4518261.25
22	535453.37	4519859.65	74	534159.62	4516749.26	126	534875.3	4518397.41
23	535446.13	4519768.51	75	534104.2	4516808.67	127	534840.4	4518524.75
24	535535.87	4519642.61	76	534063.16	4516845.28	128	534741.21	4518687.87
25	535743.9	4519548.4	77	534026.78	4516938.47	129	534691.09	4518815.04
26	536004.81	4519413.41	78	533946.98	4516967.58	130	534666.84	4518882.28
27	536073.07	4519234.83	79	533937.83	4516995.73	131	534553.27	4518941.56
28	536074.33	4519124.47	80	533960.3	4517038.37	132	534357.25	4518950.36
29	536086.79	4519000.44	81	534033.74	4517102.78	133	534224.38	4518987.48
30	536127.39	4518827.07	82	534061.97	4517104.87	134	534211.43	4519155.65
31	536238.73	4518742.8	83	534074.05	4517129.73	135	534137.93	4519309.34
32	536369.03	4518689.1	84	534114.16	4517174.34	136	534053.27	4519473.93
33	536513.32	4518619	85	534135.31	4517219.53	137	534015.49	4519641.82
34	536576.06	4518440.36	86	534166.08	4517248.82	138	533925.72	4519770.48
35	536587.8	4518136.97	87	534190.36	4517276.58	139	533893.67	4519919.12
36	536564.88	4517968.38	88	534235.1	4517285.77	140	533872.6	4520073.4
37	536610.66	4517825.42	89	534289.8	4517309.54	141	533818.6	4520210.75
38	536702.84	4517591.41	90	534327.94	4517326.61	142	533806.84	4520274.08
39	536597.52	4517374.64	91	534353.04	4517346.43	143	533733.38	4520425.01
40	536586.51	4517206.36	92	534360.19	4517353.02	144	533696.54	4520510.13
41	536425.94	4516919.97	93	534369.97	4517383.51	145	533695.56	4520595.65
42	536293.18	4516840.85	94	534399.25	4517417.12	146	533757.98	4520687.42
43	536292.86	4516836.43	95	534438.12	4517433.48	147	533821.24	4520704.7
44	536264.66	4516835.08	96	534468.29	4517451.9	148	533878.65	4520752.27
45	536164.98	4516824.44	97	534484.65	4517475.96	149	533933.35	4520794.28
46	536060.82	4516789.98	98	534496.6	4517506.48	150	533969.54	4520767.1
47	535975.94	4516731.99	99	534496.23	4517539.02	151	534005.28	4520778.54
48	535876.91	4516664.32	100	534506.75	4517568.08	152	534065.75	4520798.55
49	535759.25	4516563.18	101	534515.94	4517586.99	153	534104.32	4520804.51
50	535618.05	4516442.76	102	534553.44	4517596.82	154	534172.91	4520838.4
51	535504.39	4516408.2	103	534570.81	4517595.57	155	534228.09	4520839.03
52	535375.77	4516435.25	104	534591.82	4517592.92	156	534294.69	4520806.68

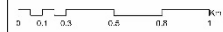
**ZONA ME PËRPARËSI ZHVILLIMIN E EKONOMISË MALORE**  
**ZONA 15, NJËSIA ADMINISTRATIVE POROÇAN, BASHKIA GRAMSH, QARKU ELBASAN**



Njësia Administrative	Zona	Statistika (M2)
Enxhe, Kukur dhe Kococajt	Zona 1	569
Rullar	Zona 2	2131
Vjerrëshejtas	Zona 3	2645
Dallaj	Zona 4	175
Kullonjat	Zona 5	1586
Juri	Zona 6	1363
Pishaj	Zona 7	1081
Pishaj	Zona 8	250
Turi	Zona 9	1535
Pishaj	Zona 10	298
Kukur dhe Kococajt	Zona 11	1039
Lur's	Zona 12	143
Mirëhojë	Zona 13	491
Shkë	Zona 14	752
Poroçani	Zona 15	614
Dallaj	Zona 16	611



1:15,000



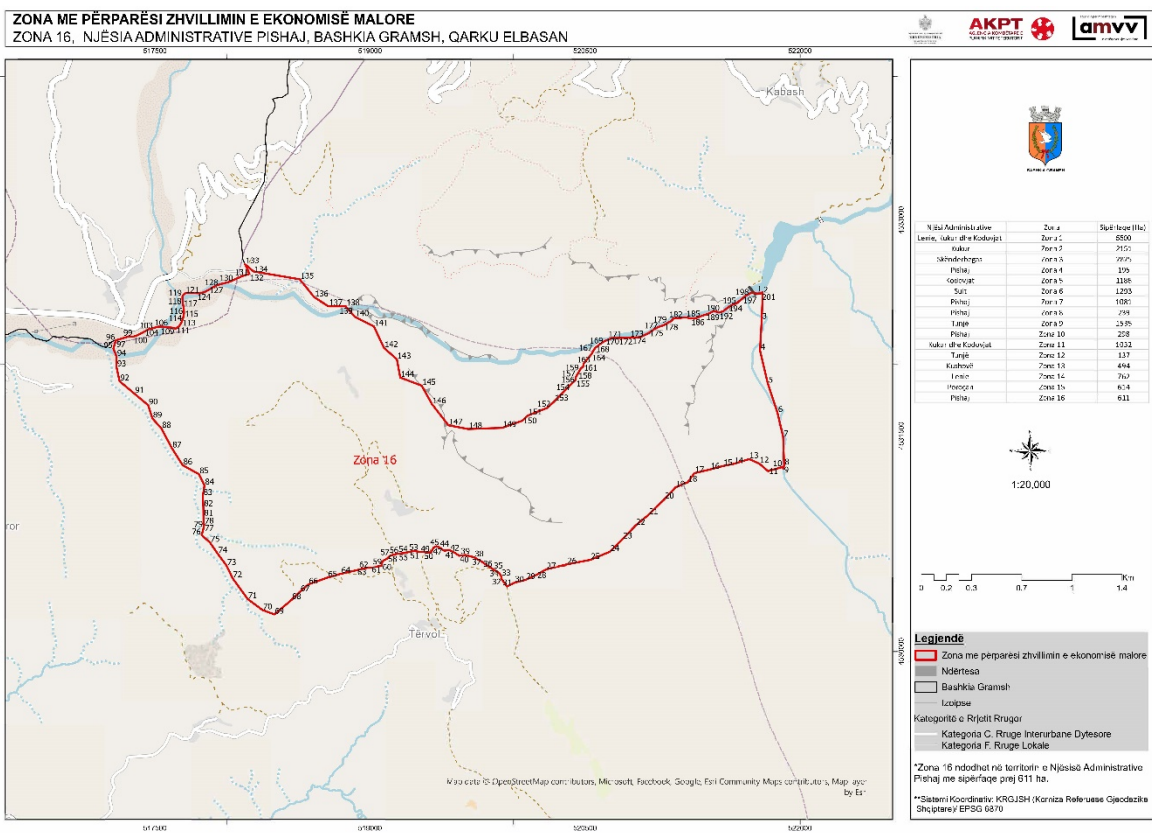
- Legjendë**
- Zona me përparësi zhvillimin e ekonomisë malore
  - Ndërtesa
  - Bashkia Gramsh
  - Lloçispa
  - Kategoria C, Rrugi Interurbane Dytësore

\*Zona 15 ndodhet në territorin e Njësies Administrative Poroçan me sipërfaqe prej 614 ha.

\*\*Sistemi Koordinativ: KROJSH (Kartiza Referuese Gjeocentrike Shqiptare) EPSG:6870

<b>Zona 15</b>					
<b>Njësia Administrative Poroçan</b>					
<b>Nr</b>	<b>Koordinata X</b>	<b>Koordinata Y</b>	<b>Nr</b>	<b>Koordinata X</b>	<b>Koordinata Y</b>
1	525855.64	4530527.75	53	528637.03	4532180.08
2	525867.59	4530662.83	54	528641.92	4532134.89
3	525847.65	4530770.2	55	528605.95	4532037.35
4	525800.02	4530844.51	56	528585.53	4531970.01
5	525761.11	4530975.05	57	528593.8	4531864.15
6	525806.38	4531106.56	58	528594.57	4531797.05
7	525894.03	4531215.16	59	528627.08	4531674.72
8	525887.64	4531364.78	60	528627.23	4531674.13
9	525936.85	4531561.83	61	528627.79	4531672.05
10	525972.13	4531749.36	62	528627.65	4531671.68
11	525881.38	4531912.06	63	528680.29	4531358.29
12	525828.11	4532070.5	64	528861.06	4530845.53
13	525836.45	4532159.48	65	528924.68	4530623.2
14	525837.17	4532161.73	66	528924.08	4530622.55
15	525907.82	4532157.19	67	528890.77	4530580.26
16	525971.97	4532157.93	68	528858.6	4530556.91
17	526181.47	4532119.47	69	528795.29	4530537.27
18	526227.24	4532175.1	70	528679.62	4530485.93
19	526228.11	4532175.99	71	528577.39	4530441.5
20	526229.34	4532175.8	72	528494.12	4530394.59
21	526336	4532229.79	73	528437.34	4530395.29
22	526467.31	4532321.27	74	528355.76	4530436.27
23	526561.72	4532311.96	75	528282.48	4530461.11
24	526658.81	4532370.17	76	528162.16	4530462.44
25	526719.65	4532421.91	77	528004.07	4530456.58
26	526752.05	4532462.94	78	527839.69	4530410.09
27	526957.05	4532466.15	79	527751.25	4530341.49
28	527051.99	4532486.27	80	527748.75	4530340.21
29	527142.67	4532490.49	81	527619.47	4530329.7
30	527164.2	4532564.78	82	527493.97	4530338.17
31	527198.85	4532623.45	83	527296.02	4530332.6
32	527251.08	4532689.39	84	527130.81	4530350.52
33	527356.9	4532701.19	85	526966.42	4530295.83
34	527414.68	4532744.24	86	526690.62	4530344.4
35	527479.57	4532783.83	87	526640.19	4530367.18
36	527532	4532832.11	88	526589.06	4530374.38
37	527624.08	4532810.2	89	526547.51	4530376.51
38	527719.02	4532846.61	90	526491.21	4530382.78
39	527758.68	4532930.06	91	526363.39	4530439.29
40	527805.79	4532980.05	92	526299.69	4530487
41	527932.9	4532983.27	93	526217.85	4530531.92

42	528000.18	4532968.14	94	526191.16	4530520.37
43	528067.58	4532942.42	95	526146.97	4530526.79
44	528108.09	4532951.72	96	526095.92	4530527.07
45	528143.59	4532936.23	97	526053.56	4530524.85
46	528191.77	4532892.63	98	526022.61	4530507.2
47	528259.18	4532856.65	99	526002.67	4530511.29
48	528320.18	4532801.3	100	525948.06	4530520.19
49	528463.91	4532673.6	101	525892.65	4530523.88
50	528551.71	4532536.64	102	525858	4530527.81
51	528618.78	4532326.15	103	525855.64	4530527.75
52	528641.92	4532188.45			



<b>Zona 16</b>					
<b>Njësia Administrative Pishaj</b>					
<b>Nr</b>	<b>Koordinata X</b>	<b>Koordinata Y</b>	<b>Nr</b>	<b>Koordinata X</b>	<b>Koordinata Y</b>
1	521737.64	4532497.69	101	517374.61	4532199.61
2	521739.29	4532491.56	102	517417.38	4532220.61
3	521732.02	4532309.04	103	517452.88	4532241.53
4	521720.45	4532093.71	104	517476.64	4532247.1
5	521774.52	4531865.1	105	517494.44	4532252.6
6	521842.36	4531660.04	106	517523.47	4532260.21
7	521881.71	4531492.08	107	517536.7	4532260.36
8	521888.63	4531295.68	108	517553.24	4532260.55
9	521882.15	4531273.55	109	517575.13	4532256.17
10	521878.35	4531285.42	110	517622.67	4532252.78
11	521776.52	4531255.74	111	517642.08	4532246.34
12	521715.32	4531308.5	112	517667.69	4532263.84
13	521644.87	4531339.78	113	517683.93	4532289.84
14	521537.14	4531306.47	114	517694.22	4532316.42
15	521461.28	4531291.34	115	517701.12	4532348.93
16	521372.44	4531267.75	116	517700.77	4532380.02
17	521262.25	4531241.55	117	517693.67	4532421.63
18	521215.45	4531178.04	118	517690.68	4532452.04
19	521130.32	4531142.62	119	517690.5	4532467.92
20	521052.85	4531059.75	120	517698.28	4532481.9
21	520942.41	4530951.57	121	517708.78	4532489.96
22	520851.79	4530876.87	122	517728.57	4532494.82
23	520761.39	4530781.98	123	517753.08	4532493.12
24	520672.1	4530694.23	124	517789.49	4532491.55
25	520536.12	4530638.03	125	517813.98	4532490.5
26	520373.71	4530606.47	126	517844.99	4532498.8
27	520227.98	4530571.54	127	517873.27	4532514.34
28	520159.52	4530532.74	128	517915.33	4532539.31
29	520085.06	4530498.62	129	517945.63	4532551.57
30	520006.87	4530478.72	130	518015.37	4532569.36
31	519954.82	4530452.53	131	518109.26	4532610.68
32	519919.2	4530501.47	132	518158.57	4532626.09
33	519914.22	4530523.28	133	518127.51	4532693.18
34	519902.57	4530544.44	134	518186.36	4532642.92
35	519858.91	4530572.83	135	518509.52	4532587.97
36	519836.71	4530585.5	136	518610.24	4532463.09
37	519780.76	4530624.4	137	518709.32	4532401.92
38	519725.66	4530655.71	138	518830.07	4532401.77
39	519665.41	4530671.75	139	518831.77	4532398.7
40	519621.36	4530666.68	140	518893.82	4532328.87
41	519593.78	4530685.37	141	519026.39	4532261.7

<b>42</b>	519553.23	4530706.96	<b>142</b>	519096.79	4532112.14
<b>43</b>	519517.56	4530701.23	<b>143</b>	519186.79	4532033.35
<b>44</b>	519483.07	4530725.17	<b>144</b>	519210.53	4531905.53
<b>45</b>	519462.46	4530732.54	<b>145</b>	519359.67	4531849.69
<b>46</b>	519443.54	4530723.96	<b>146</b>	519431.69	4531720.57
<b>47</b>	519433.1	4530706.35	<b>147</b>	519546.61	4531573.38
<b>48</b>	519423.15	4530687.35	<b>148</b>	519684.28	4531547.1
<b>49</b>	519420.4	4530689.05	<b>149</b>	519921.8	4531555.39
<b>50</b>	519393.61	4530691.66	<b>150</b>	520062.31	4531605.26
<b>51</b>	519346.38	4530693.56	<b>151</b>	520100.88	4531640.97
<b>52</b>	519316.16	4530698.08	<b>152</b>	520235.79	4531694.49
<b>53</b>	519299.12	4530698.86	<b>153</b>	520285.39	4531739.61
<b>54</b>	519240.96	4530685.9	<b>154</b>	520397.32	4531854.13
<b>55</b>	519217.42	4530683.35	<b>155</b>	520433.11	4531888.19
<b>56</b>	519179.46	4530678.36	<b>156</b>	520433.14	4531888.73
<b>57</b>	519138.55	4530665.72	<b>157</b>	520435.95	4531909.29
<b>58</b>	519118.99	4530647.25	<b>158</b>	520447.12	4531929.95
<b>59</b>	519088.03	4530628.65	<b>159</b>	520461.3	4531952.92
<b>60</b>	519082.11	4530614.14	<b>160</b>	520470.23	4531969.75
<b>61</b>	519079.39	4530595.77	<b>161</b>	520485.32	4531979.81
<b>62</b>	518955.62	4530578.64	<b>162</b>	520485.82	4531979.97
<b>63</b>	518905.08	4530565.39	<b>163</b>	520490.28	4532003.7
<b>64</b>	518795.53	4530540.91	<b>164</b>	520545.22	4532069.3
<b>65</b>	518702.9	4530514.5	<b>165</b>	520545.47	4532070.95
<b>66</b>	518568.28	4530466.5	<b>166</b>	520545.87	4532070.99
<b>67</b>	518509.72	4530415.14	<b>167</b>	520555.55	4532088.59
<b>68</b>	518451.22	4530359.56	<b>168</b>	520569.74	4532111.56
<b>69</b>	518331.98	4530258.92	<b>169</b>	520601.38	4532137.01
<b>70</b>	518249.26	4530289.66	<b>170</b>	520638.37	4532161.01
<b>71</b>	518144.89	4530366.61	<b>171</b>	520688.33	4532180.59
<b>72</b>	518039.74	4530511.15	<b>172</b>	520780.31	4532182.4
<b>73</b>	517998.63	4530597.27	<b>173</b>	520849.47	4532184.71
<b>74</b>	517936.42	4530681.05	<b>174</b>	520885.93	4532188.17
<b>75</b>	517882.73	4530758.58	<b>175</b>	520945.67	4532216.98
<b>76</b>	517825.11	4530810.72	<b>176</b>	520980.37	4532241.71
<b>77</b>	517839.29	4530863.69	<b>177</b>	521013.63	4532258.82
<b>78</b>	517842.2	4530885.92	<b>178</b>	521048.48	4532269.86
<b>79</b>	517839.44	4530887.42	<b>179</b>	521072.64	4532284.59
<b>80</b>	517837.95	4530891.89	<b>180</b>	521097.59	4532297.04
<b>81</b>	517837.39	4530940.55	<b>181</b>	521109.63	4532307.82
<b>82</b>	517836.64	4531006.77	<b>182</b>	521118.06	4532318.75
<b>83</b>	517833.05	4531083.78	<b>183</b>	521141.46	4532319.96
<b>84</b>	517844.38	4531156.9	<b>184</b>	521168.69	4532321.73
<b>85</b>	517805.64	4531234.86	<b>185</b>	521203.68	4532325.53

<b>86</b>	517692.74	4531297.1	<b>186</b>	521235.9	4532317.14
<b>87</b>	517617.06	4531413.84	<b>187</b>	521277.22	4532320.53
<b>88</b>	517543.85	4531550.88	<b>188</b>	521312.1	4532334.56
<b>89</b>	517480.86	4531621.8	<b>189</b>	521367.85	4532353.2
<b>90</b>	517451.42	4531713.38	<b>190</b>	521384.28	4532363.12
<b>91</b>	517355.89	4531793.4	<b>191</b>	521399.79	4532368.65
<b>92</b>	517252.16	4531880.07	<b>192</b>	521433.96	4532358.82
<b>93</b>	517230.76	4531978.51	<b>193</b>	521464.52	4532367.45
<b>94</b>	517231.28	4532051.51	<b>194</b>	521496.82	4532394.58
<b>95</b>	517209.02	4532106.67	<b>195</b>	521529.69	4532413.45
<b>96</b>	517224.59	4532163.62	<b>196</b>	521560.7	4532425.48
<b>97</b>	517226.4	4532165.17	<b>197</b>	521596.4	4532452.65
<b>98</b>	517237.33	4532168.26	<b>198</b>	521618.07	4532472.37
<b>99</b>	517309.87	4532190.27	<b>199</b>	521661.13	4532494.76
<b>100</b>	517347.58	4532190.7	<b>200</b>	521699.15	4532488.87
			<b>201</b>	521730.27	4532490.68
			<b>202</b>	521737.64	4532497.69