

VENDIM
Nr. 202, datë 26.3.2026

**PËR SHPALLJEN E DISA ZONAVE ME PËRPARËSI ZHVILLIMIN E
EKONOMISË MALORE NË BASHKINË BULQIZË**

Në mbështetje të nenit 100 të Kushtetutës dhe të pikës 1, të nenit 4, të ligjit nr. 20/2025, “Për paketën e maleve”, me propozimin e ministrit të Shtetit për Pushtetin Vendor, Këshilli i Ministrave

VENDOSI:

1. Shpalljen “Zonë me përparësi zhvillimin e ekonomisë malore” të disa zonave në territorin e Bashkisë Bulqizë, si më poshtë vijon:

a) Zona nr. 1, fshatrat Gjon, Ndërfushas, Lenë, Peshk, Stavec, Mëlçu dhe Val, pjesë të Njesisë Administrative Martanesh, Bashkia Bulqizë, qarku Dibër, me sipërfaqe 15 184 (pesëmbëdhjetë mijë e njëqind e tetëdhjetë e katër) ha, sipas hartës në sistemin KRGJSH;

b) Zona nr. 2, fshatrat Peladhi, Godvi, Krajkë, Zërqan, Sofraçan, Tërnovë e Madhe, Tërnovë e Vogël, Strikçan, Zall-Strikçan, Sopot, Zall-Sopot dhe Valikardhë, pjesë të Njesisë Administrative Zërqan, Bashkia Bulqizë, qarku Dibër, me sipërfaqe 5 400 (pesë mijë e katërqind) ha, sipas hartës në sistemin KRGJSH;

c) Zona nr. 3, fshatrat Fushë-Bulqizë, Dragua, Dushaj dhe Koçaj, pjesë të Njesisë Administrative Fushë-Bulqizë, Bashkia Bulqizë, qarku Dibër, me sipërfaqe 3 362 (tre mijë e treqind e gjashtëdhjetë e dy) ha, sipas hartës në sistemin KRGJSH;

ç) Zona nr. 4, fshatrat Kovashicë, Bllacë, Zogjaj, Gjuras, Shtushaj dhe Mazhicë, pjesë të Njesisë Administrative Shupenzë, Bashkia Bulqizë, qarku Dibër, me sipërfaqe 2 601 (dy mijë e gjashtëqind e një) ha, sipas hartës në sistemin KRGJSH;

d) Zona nr. 5, fshatrat Gjoricë e Sipërme, Gjoricë e Poshtme, Viçisht, Lubalesh, Çerenec i Poshtëm dhe Çerenec i Sipërm, pjesë të Njesisë Administrative Gjoricë, Bashkia Bulqizë, qarku Dibër, me sipërfaqe 2 459 (dy mijë e katërqind e pesëdhjetë e nëntë) ha, sipas hartës në sistemin KRGJSH;

dh) Zona nr. 6, fshatrat Kojavec, Lejçan, Orzhanovë, Ostren i Madh, Radovesh, Lladomericë, Pasinkë dhe Tërbaç, pjesë të Njesisë Administrative Ostren, Bashkia Bulqizë, qarku Dibër, me sipërfaqe 3 854 (tre mijë e tetëqind e pesëdhjetë e katër) ha, sipas hartës në sistemin KRGJSH;

e) Zona nr. 7, fshati Vajkal nr. 1, pjesë e njesisë administrative Bulqizë, Bashkia Bulqizë, qarku Dibër, me sipërfaqe 443 (katërqind e dyzet e tre) ha, sipas hartës në sistemin KRGJSH;

ë) Zona nr. 8, fshati Klenjë, pjesë e njesisë administrative Trebisht, Bashkia Bulqizë, qarku Dibër, me sipërfaqe 703 (shtatëqind e tre) ha, sipas hartës në sistemin KRGJSH.

2. Shtirirja, kufijtë dhe pikat e hyrjes e të daljes së këtyre zonave përcaktohen në hartën regjistruese, sipas sistemit KRGJSH, që i bashkëlidhet këtij vendimi.

3. Llojet e aktiviteteve, që do të zhvillohen në këto zona, janë:

- a) të zhvillimit ekonomik;
- b) të zhvillimit industrial;
- c) të zhvillimit turistik.

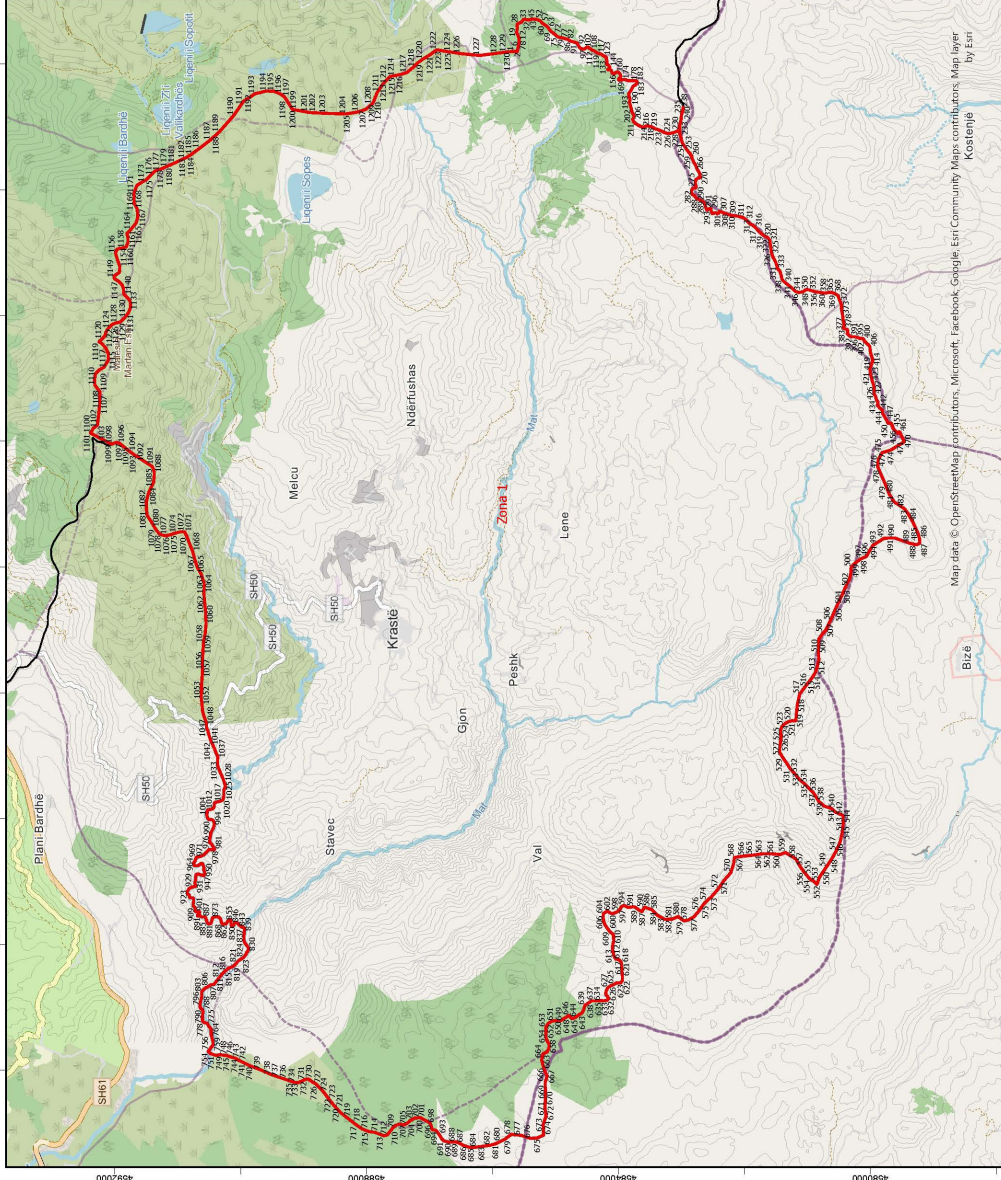
4. Ngarkohen Ministria e Ekonomisë dhe Inovacionit, Agjencia Shtetërore e Kadastrës dhe Bashkia Bulqizë për zbatimin e këtij vendimi.


Ky vendim hyn në fuqi pas botimit në Fletoren Zyrtare.

KRYEMINISTËR

Edi Rama

ZONA ME PËRPARËSI ZHVILLIMIN E EKONOMISË MALORE
ZONA 1, NËSIA ADMINISTRATIVE MARTANESH, BASHKIA BULOQIZË, QARKU DIBËR






BASHKIA BULOQIZË

Nësia Administrative	Zona	Sipërfaqe (ha)
Martanesh	Zona 1	15184
Zerqan	Zona 2	5400
Fushë - Bulqizë	Zona 3	3362
Shupenzë	Zona 4	2601
Gjoricë	Zona 5	2459
Ostren	Zona 6	3854
Bulqizë	Zona 7	443
Trebisht	Zona 8	703

●

1:60.000



0 0.5 1 2 3 4 Km

Legjendë

- Zona me përparësi zhvillimin e ekonomisë malore
- Bashkia Bulqizë
- Izoipe
- Kategoritë e Rivjellit Rrugor
- Kategoritë e Rrugëve Interurbane Dytësore
- Kategoritë e Rrugëve Lokale

*Zona 1 në territorin e Njësisë Administrative Martanesh, me sipërfaqe prej 15184 ha.

**Sistemi Koordinativ: KRCQ/SH (Komiza Referuese Gjeodazike Shqiptare)/ EPSG 6870

Map data © OpenStreetMap contributors, Microsoft, Facebook, Google, Esri Community Maps contributors, Map layer by Esri
 Kostentje

Zona 1								
Njësia Administrative Martanesh								
Nr.	Koordinata X	Koordinata Y	Nr.	Koordinata X	Koordinata Y	Nr.	Koordinata X	Koordinata Y
1	526194.997	4585720.091	411	521386.8052	4579991.446	821	511713.42	4590062.443
2	526197.56	4585606.436	412	521361.8998	4579985.232	822	511748.782	4590025.795
3	526205.663	4585604.403	413	521334.0752	4579975.175	823	511775.762	4589981.639
4	526218.8	4585601.378	414	521309.2137	4579965.151	824	511792.653	4589956.599
5	526253.786	4585597.415	415	521289.7719	4579962.387	825	511807.171	4589944.045
6	526281.668	4585589.796	416	521268.5588	4579966.375	826	511830.678	4589924.738
7	526304.351	4585585.293	417	521248.163	4579972.914	827	511844.797	4589914.777
8	526318.703	4585580.297	418	521222.6878	4579979.393	828	511874.035	4589906.543
9	526332.607	4585579.663	419	521195.4854	4579988.816	829	511884.732	4589897.138
10	526343.704	4585581.38	420	521157.8101	4580009.055	830	511895.452	4589885.616
11	526356.408	4585581.526	421	521111.9323	4580002.247	831	511925.191	4589877.489
12	526376.655	4585581.76	422	521068.3731	4579998.357	832	511945.281	4589879.839
13	526406.434	4585581.707	423	521032.9197	4579989.058	833	511974.727	4589897.119
14	526431.792	4585586.367	424	520993.6567	4579979.715	834	511997.808	4589915.385
15	526450.377	4585592.934	425	520946.8382	4579964.782	835	512028.264	4589936.912
16	526468.94	4585601.487	426	520884.8204	4579946.286	836	512058.853	4589946.794
17	526479.37	4585610.501	427	520832.7906	4579942.723	837	512125.522	4589949.682
18	526499.124	4585619.067	428	520783.2956	4579939.612	838	512181.341	4589945.981
19	526506.662	4585619.551	429	520744.3094	4579942.973	839	512207.109	4589944.272
20	526526.982	4585613.433	430	520730.5315	4579926.303	840	512239.213	4589939.035
21	526545.687	4585609.678	431	520716.2423	4579917.248	841	512249.54	4589937.351
22	526559.6	4585608.251	432	520696.8298	4579911.944	842	512262.121	4589948.084
23	526577.885	4585606.477	433	520681.1878	4579910.071	843	512273.436	4589976.801
24	526601.271	4585609.923	434	520664.2858	4579907.336	844	512292.197	4590002.428
25	526614.769	4585610.079	435	520650.4248	4579897.862	845	512316.203	4590032.351
26	526628.7	4585607.063	436	520638.2619	4579887.985	846	512338.165	4590055.897
27	526636.677	4585603.979	437	520617.6283	4579878.434	847	512350.685	4590071.924
28	526643.153	4585593.333	438	520596.8533	4579881.157	848	512348.348	4590090.954
29	526653.453	4585560.894	439	520571.3488	4579890.177	849	512328.075	4590104.484
30	526661.198	4585543.513	440	520562.9367	4579885.423	850	512303.604	4590114.789
31	526668.566	4585536.259	441	520557.1105	4579869.458	851	512292.908	4590124.194
32	526684.301	4585526.117	442	520526.0734	4579851.554	852	512291.654	4590141.12
33	526702.728	4585512.036	443	520514.0472	4579829.825	853	512296.837	4590150.709
34	526706.226	4585507.047	444	520492.2658	4579809.677	854	512321.148	4590154.166
35	526708.405	4585501.778	445	520452.8809	4579810.916	855	512379.373	4590154.838
36	526708.508	4585492.78	446	520396.9649	4579777.251	856	512392.052	4590157.102
37	526705.251	4585476.86	447	520348.5947	4579750.022	857	512398.281	4590167.762
38	526701.696	4585463.849	448	520323.1766	4579736.928	858	512392.829	4590181.463
39	526698.112	4585453.22	449	520300.6378	4579727.23	859	512382.071	4590196.161
40	526697.687	4585444.215	450	520286.9599	4579720.539	860	512366.07	4590206.564
41	526698.071	4585433.896	451	520281.609	4579712.948	861	512343.131	4590223.173

42	526700.085	4585419.89	452	520283.3356	4579697.862	862	512329.204	4590237.305
43	526701.251	4585410.639	453	520287.4058	4579669.34	863	512324.257	4590253.129
44	526704.555	4585399.56	454	520283.7555	4579664.534	864	512321.464	4590265.802
45	526709.44	4585392.999	455	520222.0692	4579642.647	865	512320.8	4590277.441
46	526712.784	4585378.479	456	520194.2039	4579633.358	866	512321.231	4590285.916
47	526714.217	4585368.967	457	520178.7723	4579617.834	867	512323.281	4590291.763
48	526714.059	4585359.7	458	520134.8492	4579572.083	868	512331.677	4590298.212
49	526711.517	4585350.671	459	520122.6013	4579555.802	869	512343.796	4590303.117
50	526708.737	4585339.257	460	520123.6961	4579552.639	870	512368.071	4590309.75
51	526708.299	4585331.311	461	520150.7872	4579543.691	871	512396.014	4590319.602
52	526708.397	4585322.842	462	520145.083	4579533.571	872	512416.012	4590329.891
53	526706.715	4585307.999	463	520131.6732	4579526.273	873	512433.296	4590345.972
54	526704.745	4585295.271	464	520116.6761	4579518.956	874	512441.878	4590382.069
55	526687.507	4585252.191	465	520103.7527	4579515.367	875	512441.682	4590399.007
56	526681.135	4585240.053	466	520091.106	4579510.723	876	512435.56	4590424.876
57	526669.682	4585229.002	467	520075.6226	4579499.697	877	512426.353	4590444.29
58	526655.244	4585218.578	468	520046.9267	4579487.195	878	512409.318	4590452.563
59	526642.814	4585206.193	469	520033.2187	4579482.803	879	512387.025	4590457.6
60	526617.764	4585169.177	470	520020.1223	4579471.275	880	512358.345	4590465.738
61	526607.47	4585150.865	471	520013.0466	4579465.373	881	512338.145	4590472.916
62	526604.471	4585145.531	472	520005.171	4579459.99	882	512328.422	4590489.744
63	526590.783	4585127.506	473	519991.9243	4579461.369	883	512324.953	4590515.114
64	526575.706	4585115.09	474	519857.5339	4579678.794	884	512337.509	4590527.965
65	526568.812	4585110.378	475	519820.2482	4579813.359	885	512370.18	4590541.047
66	526561.237	4585107.312	476	519704.3885	4579875.55	886	512409.226	4590552.086
67	526552.016	4585103.566	477	519593.1398	4579882.208	887	512435.533	4590566.154
68	526536.593	4585092.469	478	519494.3501	4579841.364	888	512434.168	4590592.607
69	526518.596	4585075.056	479	519300.7865	4579755.753	889	512436.078	4590610.628
70	526505.827	4585063.328	480	519155.7012	4579697.906	890	512436.977	4590624.403
71	526497.743	4585047.022	481	519032.39	4579617.663	891	512450.605	4590636.207
72	526480.419	4585028.624	482	518930.9581	4579461.647	892	512458.987	4590646.758
73	526463.145	4585005.925	483	518848.277	4579401.137	893	512457.769	4590660.507
74	526443.859	4584985.519	484	518714.1704	4579324.153	894	512450.2	4590674.184
75	526432.79	4584969.841	485	518528.501	4579242.604	895	512449.019	4590684.758
76	526420.468	4584938.675	486	518445.4079	4579217.823	896	512457.451	4590688.032
77	526416.058	4584919.433	487	518381.9355	4579213.121	897	512473.428	4590679.746
78	526412.416	4584890.936	488	518353.5512	4579264.409	898	512493.714	4590665.158
79	526405.459	4584863.062	489	518376.1802	4579367.901	899	512506.539	4590654.718
80	526397.755	4584842.459	490	518460.7254	4579611.071	900	512518.196	4590653.794
81	526395.931	4584828.541	491	518459.8555	4579686.499	901	512524.389	4590667.63
82	526394.753	4584815.954	492	518458.7568	4579781.776	902	512523.184	4590680.321
83	526390.897	4584805.984	493	518345.5397	4579959.14	903	512520.932	4590691.941
84	526378.501	4584790.62	494	518257.5612	4580013.711	904	512519.69	4590707.808
85	526366.752	4584776.588	495	518213.6177	4580037.027	905	512524.848	4590719.514

86	526364.273	4584762.001	496	518165.6586	4580064.266	906	512537.503	4590723.896
87	526357.163	4584747.361	497	518141.1066	4580127.51	907	512559.734	4590724.152
88	526352.396	4584718.917	498	518120.7993	4580166.98	908	512579.836	4590725.443
89	526342.099	4584693.651	499	518068.4125	4580233.873	909	512597.71	4590736.238
90	526332.534	4584662.439	500	517996.1303	4580304.507	910	512608.113	4590752.239
91	526324.023	4584654.4	501	517868.9567	4580314.951	911	512619.708	4590756.609
92	526313.498	4584648.984	502	517801.1939	4580337.992	912	512640.881	4590756.853
93	526295.101	4584637.522	503	517649.5141	4580407.71	913	512672.713	4590750.868
94	526273.389	4584626.684	504	517573.6742	4580442.569	914	512702.403	4590746.976
95	526259.586	4584618.583	505	517366.0957	4580539.435	915	512728.869	4590747.282
96	526249.137	4584606.551	506	517146.6075	4580636.164	916	512738.225	4590762.213
97	526243.966	4584595.904	507	516990.9122	4580709.806	917	512741.108	4590787.657
98	526239.479	4584583.279	508	516950.7098	4580753.017	918	512743.029	4590804.619
99	526234.993	4584570.654	509	516854.6543	4580819.406	919	512747.154	4590814.195
100	526237.922	4584546.203	510	516640.1893	4580824.873	920	512762.996	4590817.555
101	526244.768	4584526.429	511	516521.1388	4580819.529	921	512783.11	4590817.787
102	526255.553	4584509.348	512	516405.6919	4580845.99	922	512791.457	4590828.471
103	526264.238	4584502.17	513	516333.9595	4580868.986	923	512799.767	4590842.331
104	526269.692	4584488.336	514	516273.9993	4580904.028	924	512812.397	4590848.83
105	526266.616	4584479.565	515	516213.9932	4580943.039	925	512836.745	4590849.111
106	526257.186	4584470.986	516	516085.7668	4581044.791	926	512854.852	4590839.792
107	526246.716	4584460.807	517	515977.6644	4581122.952	927	512882.584	4590822.113
108	526240.529	4584446.441	518	515798.5624	4581160.59	928	512897.637	4590802.17
109	526232.17	4584436.816	519	515556.0799	4581185.586	929	512909.612	4590773.722
110	526227.808	4584431.072	520	515555.3014	4581253.073	930	512918.546	4590733.592
111	526221.219	4584422.396	521	515538.7809	4581308.468	931	512924.63	4590713.942
112	526215.02	4584409.089	522	515502.3651	4581367.604	932	512935.228	4590713.006
113	526210.931	4584396.336	523	515466.2241	4581402.921	933	512948.917	4590719.516
114	526203.692	4584381.43	524	515426.3423	4581418.342	934	512972.109	4590728.255
115	526195.905	4584368.105	525	515402.4315	4581426.007	935	512994.389	4590724.277
116	526185.994	4584355.285	526	515295.3367	4581416.831	936	513020.952	4590716.114
117	526175.561	4584341.929	527	515160.1323	4581435.123	937	513051.64	4590717.527
118	526166.8	4584321.182	528	515056.8243	4581441.872	938	513079.201	4590714.669
119	526161.167	4584304.706	529	514974.0067	4581393.272	939	513101.493	4590709.633
120	526157.633	4584289.842	530	514867.6448	4581320.579	940	513112.177	4590701.287
121	526150.067	4584265.014	531	514796.691	4581276.086	941	513118.688	4590687.598
122	526140.162	4584251.665	532	514725.9662	4581211.744	942	513120.004	4590665.379
123	526131.267	4584242.562	533	514615.8176	4581123.125	943	513109.662	4590644.084
124	526121.88	4584230.278	534	514561.0179	4581054.996	944	513103.445	4590632.366
125	526116.179	4584219.624	535	514490.3848	4580982.714	945	513100.453	4590616.45
126	526111.021	4584207.918	536	514423.6756	4580914.448	946	513097.436	4590602.651
127	526107.955	4584198.353	537	514344.8737	4580861.924	947	513095.49	4590587.806
128	526103.781	4584193.011	538	514273.92	4580817.432	948	513098.776	4590578.315
129	526095.318	4584192.384	539	514198.7339	4580736.899	949	513118.963	4590572.196

130	526087.317	4584197.586	540	514161.7437	4580619.723	950	513135.913	4590571.333
131	526080.959	4584198.042	541	514103.6603	4580556.414	951	513149.638	4590574.668
132	526069.357	4584194.202	542	514050.797	4580436.713	952	513165.42	4590583.32
133	526059.348	4584189.851	543	514028.2483	4580433.019	953	513193.991	4590584.709
134	526049.888	4584183.919	544	513919.6524	4580431.766	954	513229.959	4590587.242
135	526037.725	4584182.719	545	513772.7431	4580447.118	955	513262.667	4590597.149
136	526030.844	4584182.64	546	513626.4101	4580481.913	956	513278.436	4590606.86
137	526022.301	4584188.894	547	513489.2209	4580541.863	957	513286.783	4590617.544
138	526011.617	4584197.241	548	513367.7931	4580608.461	958	513286.636	4590630.247
139	526001.031	4584197.119	549	513231.0622	4580699.6	959	513268.358	4590654.388
140	525994.74	4584191.753	550	513175.3985	4580736.68	960	513256.517	4590671.191
141	525990.658	4584178.471	551	513068.2855	4580808.033	961	513249.896	4590694.408
142	525981.289	4584164.598	552	512953.5509	4580850.046	962	513248.642	4590711.333
143	525970.295	4584153.883	553	513003.0648	4580898.685	963	513250.564	4590728.296
144	525957.701	4584144.209	554	513034.2101	4580951.114	964	513258.849	4590744.273
145	525944.511	4584140.351	555	513105.8289	4581017.98	965	513273.596	4590750.796
146	525931.795	4584141.263	556	513158.7078	4581057.961	966	513296.96	4590744.713
147	525924.779	4584152.829	557	513235.5378	4581113.457	967	513328.963	4590723.908
148	525918.244	4584168.635	558	513358.6076	4581183.069	968	513354.468	4590715.732
149	525908.144	4584172.224	559	513461.3993	4581349.222	969	513376.772	4590709.638
150	525903.016	4584157.871	560	513429.3473	4581432.628	970	513390.693	4590696.034
151	525904.836	4584137.775	561	513436.8171	4581531.77	971	513390.962	4590672.745
152	525897.627	4584120.222	562	513441.3845	4581592.389	972	513398.801	4590635.779
153	525886.122	4584107.913	563	513439.9757	4581714.502	973	513428.025	4590582.053
154	525871.313	4584106.683	564	513430.6902	4581779.285	974	513469.241	4590542.825
155	525858.621	4584105.478	565	513418.5531	4581863.962	975	513501.379	4590510.375
156	525846.575	4584094.222	566	513400.6151	4582052.859	976	513509.995	4590497.769
157	525842.53	4584077.764	567	513388.1367	4582115.094	977	513509.686	4590478.708
158	525847.508	4584059.292	568	513379.6381	4582157.48	978	513504.053	4590462.232
159	525858.247	4584046.181	569	513286.7761	4582170.267	979	513499.613	4590434.123
160	525870.556	4584034.676	570	513140.8989	4582214.881	980	513500.289	4590421.426
161	525873.697	4584007.184	571	513021.5877	4582321.164	981	513511.46	4590416.79
162	525850.091	4583988.383	572	512887.749	4582412.155	982	513528.343	4590421.75
163	525830.455	4583969.627	573	512765.9062	4582515.525	983	513557.801	4590437.972
164	525809.312	4583966.736	574	512691.9751	4582594.047	984	513586.157	4590457.886
165	525793.448	4583965.23	575	512630.9622	4582653.668	985	513611.818	4590482.005
166	525778.769	4583975.648	576	512534.9556	4582719.235	986	513623.895	4590490.615
167	525767.954	4583995.376	577	512435.5547	4582803.813	987	513638.697	4590492.374
168	525750.72	4583997.824	578	512380.4147	4582904.777	988	513656.17	4590492.047
169	525738.841	4583995.04	579	512376.5074	4582968.232	989	513716.604	4590484.804
170	525735.084	4583976.468	580	512442.2211	4583051.54	990	513741.013	4590479.792
171	525738.006	4583952.678	581	512399.7794	4583152.65	991	513771.811	4590471.678
172	525747.483	4583934.259	582	512398.4606	4583266.935	992	513811.182	4590454.663
173	525753.005	4583914.47	583	512435.8228	4583330.866	993	513850.59	4590434.473

174	525753.188	4583898.591	584	512463.7712	4583385.164	994	513893.617	4590421.735
175	525745.478	4583878.649	585	512551.7436	4583465.554	995	513923.831	4590418.379
176	525736.383	4583863.986	586	512591.6209	4583586.664	996	513961.794	4590431.522
177	525731.349	4583841.428	587	512522.5926	4583628.201	997	513979.589	4590449.198
178	525731.731	4583808.345	588	512532.8691	4583654.778	998	513984.656	4590468.843
179	525731.99	4583785.849	589	512557.9993	4583690.777	999	513983.396	4590486.298
180	525732.28	4583760.706	590	512584.9849	4583724.171	1000	513985.262	4590508.025
181	525735.141	4583742.21	591	512597.8764	4583753.424	1001	513994.661	4590519.25
182	525732.754	4583719.683	592	512594.8036	4583790.43	1002	514016.77	4590530.094
183	525719.673	4583706.297	593	512587.7281	4583851.46	1003	514037.894	4590534.573
184	525694.515	4583707.33	594	512615.199	4583897.276	1004	514061.128	4590541.127
185	525677.175	4583719.042	595	512611.6427	4583936.145	1005	514073.856	4590539.157
186	525666.466	4583729.506	596	512590.2041	4583959.711	1006	514102.549	4590529.959
187	525651.604	4583755.804	597	512568.9181	4583970.048	1007	514118.416	4590531.201
188	525636.834	4583774.163	598	512528.9	4583998.69	1008	514132.202	4590529.243
189	525607.568	4583787.06	599	512507.1866	4584046.065	1009	514141.913	4590513.474
190	525578.257	4583803.927	600	512488.1797	4584088.179	1010	514145.383	4590488.103
191	525551.592	4583820.825	601	512495.6886	4584125.307	1011	514150.97	4590462.758
192	525530.925	4583837.432	602	512530.647	4584180.101	1012	514158.612	4590442.729
193	525505.995	4583837.25	603	512509.9791	4584207.339	1013	514173.592	4590429.138
194	525483.499	4583836.991	604	512486.4087	4584241.617	1014	514201.226	4590419.929
195	525463.786	4583824.852	605	512436.0836	4584246.328	1015	514230.856	4590421.33
196	525434.811	4583812.606	606	512372.6836	4584237.658	1016	514248.901	4590417.303
197	525410.869	4583822.918	607	512317.3422	4584218.499	1017	514261.825	4590398.395
198	525393.62	4583826.689	608	512277.9654	4584191.586	1018	514271.952	4590346.632
199	525364.584	4583819.737	609	512212.1068	4584146.728	1019	514287.977	4590297.185
200	525343.502	4583811.552	610	512152.2646	4584079.01	1020	514298.747	4590281.427
201	525314.42	4583808.57	611	512054.4125	4584075.235	1021	514335.909	4590272.328
202	525289.399	4583797.693	612	512006.6412	4584087.913	1022	514367.704	4590269.519
203	525261.67	4583792.079	613	511932.4456	4584097.64	1023	514416.401	4590270.082
204	525235.281	4583785.157	614	511887.5946	4584086.539	1024	514454.548	4590267.346
205	525206.32	4583771.588	615	511821.5799	4584075.194	1025	514484.324	4590256.044
206	525186.623	4583758.126	616	511766.3912	4584042.807	1026	514495.131	4590237.111
207	525164.173	4583753.896	617	511759.0349	4583992.451	1027	514538.388	4590250.316
208	525137.63	4583760.207	618	511714.4892	4583954.895	1028	514587.972	4590265.711
209	525117.612	4583774.535	619	511624.6041	4583948.566	1029	514624.889	4590277.784
210	525095.208	4583766.335	620	511550.5612	4583945.066	1030	514672.32	4590296.331
211	525067.632	4583747.488	621	511489.7763	4583939.073	1031	514727.087	4590321.316
212	525046.764	4583720.777	622	511426.2849	4583938.34	1032	514771.341	4590339.826
213	525027.25	4583691.435	623	511383.5909	4583969.597	1033	514819.793	4590361.561
214	525009.121	4583656.815	624	511390.8556	4584027.889	1034	514850.432	4590367.209
215	524998.901	4583624.934	625	511366.6189	4584064.651	1035	514876.874	4590369.632
216	524999.313	4583589.204	626	511342.2821	4584121.792	1036	514919.243	4590368.004
217	525015.347	4583547.396	627	511317.8096	4584167.275	1037	514972.211	4590365.44

218	525005.264	4583503.604	628	511262.9436	4584193.566	1038	515002.85	4590371.088
219	524993.813	4583463.768	629	511206.2416	4584205.675	1039	515031.25	4590387.297
220	524967.896	4583415.823	630	511174.8318	4584176.208	1040	515112.422	4590417.881
221	524955.136	4583374.647	631	511135.3634	4584157.232	1041	515164.038	4590440.711
222	524942.239	4583345.382	632	511108.6033	4584183.381	1042	515223.003	4590468.921
223	524930.711	4583312.161	633	511102.7933	4584228.293	1043	515296.825	4590494.125
224	524912.536	4583281.512	634	511104.8586	4584278.588	1044	515369.614	4590517.2
225	524899.7	4583246.953	635	511104.4922	4584310.334	1045	515399.194	4590522.836
226	524893.404	4583219.087	636	511103.9121	4584360.598	1046	515418.09	4590536.818
227	524895.155	4583182.049	637	511104.0422	4584424.503	1047	515445.554	4590542.43
228	524906.367	4583127.915	638	511064.7623	4584482.878	1048	515490.028	4590541.885
229	524926.858	4583072.565	639	511031.782	4584535.022	1049	515549.177	4590554.214
230	524945.736	4583042.343	640	510961.473	4584552.099	1050	515637.747	4590585.942
231	524978.91	4583034.784	641	510913.5491	4584578.004	1051	515721.134	4590608.081
232	525038.566	4583026.208	642	510886.6669	4584614.735	1052	515808.939	4590614.389
233	525091.667	4583012.263	643	510870.4276	4584646.298	1053	515901.952	4590628.17
234	525144.706	4583003.61	644	510835.5784	4584685.583	1054	515999.394	4590625.06
235	525200.347	4582998.958	645	510819.0949	4584738.309	1055	516091.508	4590625.066
236	525250.801	4582984.982	646	510871.5053	4584788.432	1056	516364.385	4590605.388
237	525284.006	4582974.777	647	510854.1896	4584815.809	1057	516552.846	4590605.448
238	525305.374	4582970.344	648	510823.7965	4584863.863	1058	516790.151	4590593.368
239	525294.202	4582971.61	649	510773.5826	4584943.255	1059	516934.467	4590565.389
240	525254.719	4582976.649	650	510789.3727	4585021.069	1060	517099.809	4590550.359
241	525187.191	4583000.01	651	510775.5957	4585068.535	1061	517300.876	4590559.035
242	525122.783	4583005.193	652	510743.3002	4585115.787	1062	517474.32	4590575.862
243	525043.009	4583021.207	653	510684.6418	4585154.797	1063	517573.734	4590585.481
244	524992.146	4583026.546	654	510592.6879	4585153.466	1064	517743.189	4590581.086
245	524950.645	4583027.761	655	510544.3708	4585158.47	1065	517890.835	4590631.496
246	524910.836	4583028.995	656	510491.614	4585144.632	1066	518002.365	4590692.076
247	524877.859	4583025.228	657	510457.4061	4585128.362	1067	518118.399	4590729.415
248	524854.272	4583014.795	658	510425.8742	4585109.477	1068	518257.723	4590767.023
249	524820.526	4583004.246	659	510378.378	4585098.345	1069	518367.331	4590810.641
250	524794.312	4583001.403	660	510330.5763	4585113.669	1070	518483.267	4590856.449
251	524769.829	4582995.194	661	510303.9383	4585129.236	1071	518556.98	4590891.182
252	524736.94	4582983.807	662	510277.1172	4585160.676	1072	518562.99	4590920.897
253	524697.454	4582957.104	663	510260.7862	4585200.175	1073	518558.217	4590967.428
254	524668.885	4582938.147	664	510195.796	4585214.349	1074	518542.711	4591026.54
255	524633.612	4582913.186	665	510160.518	4585222.044	1075	518518.589	4591098.258
256	524605.063	4582892.537	666	509987.2554	4585175.077	1076	518496.413	4591184.821
257	524589.005	4582873.333	667	509904.2568	4585134.147	1077	518508.359	4591250.604
258	524569.16	4582863.01	668	509812.4777	4585163.567	1078	518531.135	4591295.336
259	524548.984	4582852.515	669	509660.0987	4585161.808	1079	518608.789	4591355.524
260	524539.655	4582837.594	670	509507.7199	4585160.05	1080	518718.153	4591420.315
261	524527.827	4582841.509	671	509395.8582	4585168.918	1081	518821.141	4591487.149

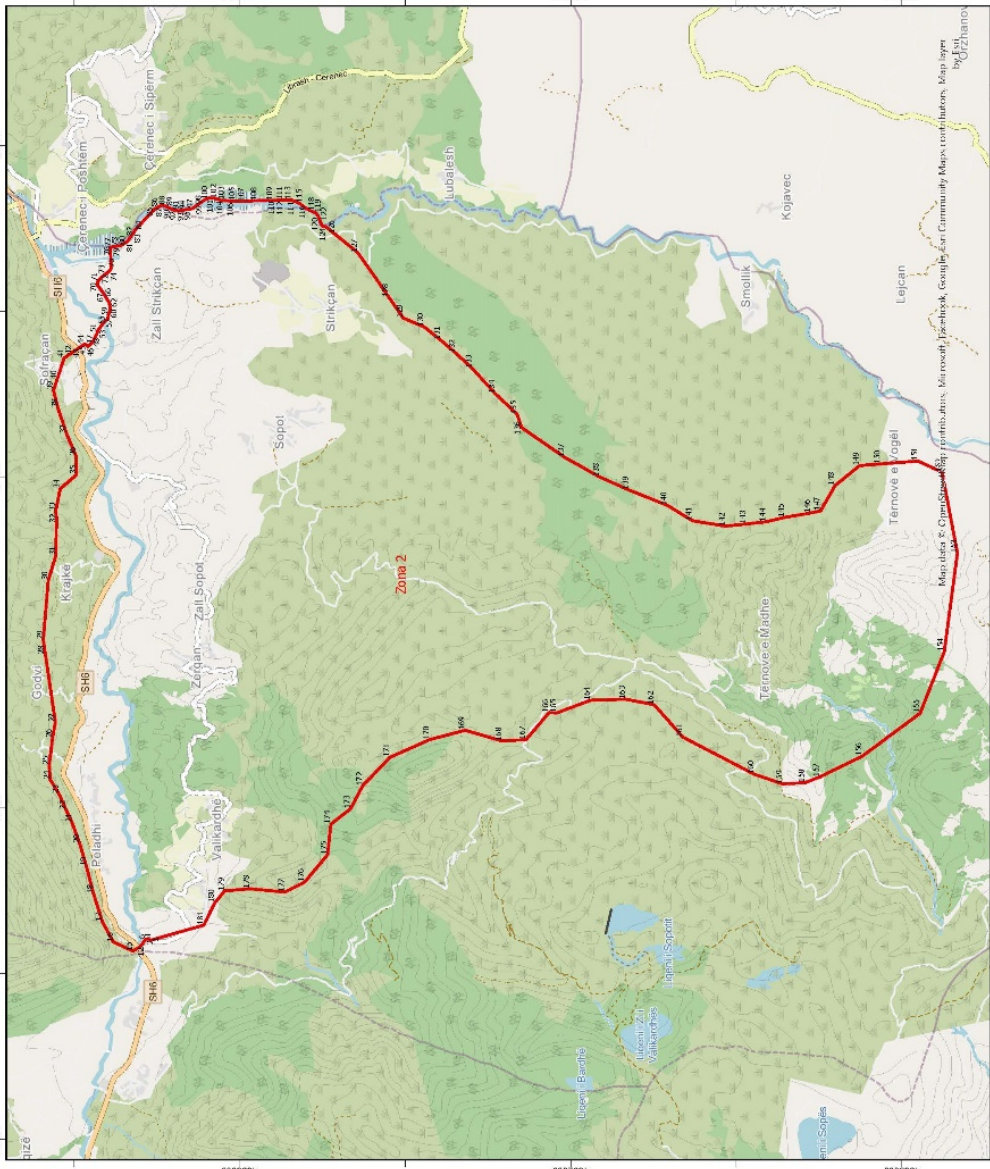
262	524503.378	4582835.458	672	509277.2987	4585148.251	1082	518931.092	4591501.125
263	524470.904	4582819.676	673	509131.6877	4585197.462	1083	519034.838	4591502.324
264	524435.888	4582805.069	674	508966.6167	4585189.204	1084	519183.512	4591463.809
265	524393.035	4582776.634	675	508920.9083	4585296.67	1085	519266.6	4591420.3
266	524367.735	4582767.875	676	508916.6433	4585396.3	1086	519351.706	4591385.285
267	524336.529	4582757.355	677	508964.7415	4585550.019	1087	519430.168	4591375.604
268	524262.529	4582713.32	678	508980.6289	4585703.423	1088	519504.322	4591372.226
269	524232.977	4582706.205	679	508901.9932	4585804.299	1089	519554.965	4591387.634
270	524205.099	4582700.804	680	508869.4771	4585869.567	1090	519597.115	4591405.062
271	524189.821	4582704.014	681	508828.1986	4585960.143	1091	519620.013	4591439.207
272	524186.259	4582719.213	682	508808.3126	4586031.909	1092	519680.362	4591530.959
273	524183.976	4582740.544	683	508796.7731	4586114.358	1093	519796.898	4591708.063
274	524171.534	4582753.221	684	508776.0069	4586262.344	1094	519851.091	4591782.804
275	524159.419	4582770.552	685	508776.8041	4586376.699	1095	519919.983	4591868.303
276	524141.573	4582776.272	686	508805.3697	4586470.199	1096	519970.137	4591926.056
277	524101.735	4582780.046	687	508838.6343	4586523.521	1097	519982.4	4591964.314
278	524040.981	4582766.363	688	508863.2343	4586593.683	1098	519960.42	4592033.94
279	524024.677	4582780.851	689	508856.3448	4586640.189	1099	519951.296	4592048.168
280	524021.805	4582809.605	690	508859.8458	4586703.754	1100	520127.685	4592384.892
281	524019.08	4582825.66	691	508876.0013	4586771.701	1101	520128.158	4592384.638
282	523997.808	4582834.728	692	508898.973	4586799.494	1102	520204.215	4592343.529
283	523967.234	4582842.842	693	508991.471	4586857.735	1103	520259.912	4592276.574
284	523944.415	4582839.193	694	509046.0055	4586902.833	1104	520353.418	4592264.685
285	523926.735	4582830.522	695	509049.7999	4586940.991	1105	520412.241	4592257.206
286	523909.319	4582798.993	696	509060.1172	4586964.403	1106	520441.823	4592254.592
287	523879.354	4582775.516	697	509106.6228	4586971.293	1107	520584.059	4592242.024
288	523866.524	4582765.479	698	509157.1674	4586995.169	1108	520623.716	4592238.521
289	523836.673	4582710.946	699	509192.598	4587044.281	1109	520792.695	4592240.474
290	523817.641	4582672.626	700	509219.4864	4587099.647	1110	520889.023	4592313.418
291	523788.372	4582640.961	701	509246.4236	4587150.778	1111	520948.367	4592323.878
292	523743.447	4582623.157	702	509239.0939	4587235.394	1112	521065.572	4592309.626
293	523676.257	4582598.18	703	509206.6264	4587296.427	1113	521123.36	4592260.873
294	523680.404	4582581.136	704	509159.3873	4587353.054	1114	521178.987	4592173.088
295	523698.11	4582560.694	705	509131.252	4587405.667	1115	521289.05	4592101.539
296	523697.042	4582537.911	706	509141.2759	4587454.486	1116	521398.242	4592105.402
297	523682.157	4582530.362	707	509138.6941	4587494.689	1117	521481.066	4592140.174
298	523651.455	4582523.556	708	509114.72	4587553.702	1118	521563.378	4592219.149
299	523638.736	4582521.893	709	509078.3359	4587587.162	1119	521580.456	4592250.299
300	523620.314	4582512.681	710	509039.859	4587618.48	1120	521623.955	4592204.392
301	523622.669	4582492.061	711	509005.6654	4587645.613	1121	521625.828	4592202.413
302	523632.38	4582476.292	712	508969.3547	4587672.721	1122	521675.617	4592158.469
303	523635.431	4582468.253	713	508958.1084	4587729.764	1123	521731.447	4592143.218
304	523630.383	4582445.673	714	509013.5865	4587876.513	1124	521784.278	4592110.434
305	523613.625	4582432.264	715	509025.2384	4587967.701	1125	521831.677	4592068.114

306	523627.641	4582408.807	716	509064.3164	4588067.675	1126	521840.523	4592060.213
307	523659.947	4582394.546	717	509118.4352	4588148.766	1127	521863.183	4592025.49
308	523633.723	4582341.337	718	509172.6762	4588219.27	1128	521877.947	4591985.913
309	523592.367	4582216.997	719	509249.8643	4588319.685	1129	521896.304	4591909.813
310	523586.33	4582143.9	720	509333.3554	4588424.407	1130	521957.438	4591848.513
311	523559.044	4582021.91	721	509408.7931	4588493.039	1131	522037.638	4591787.433
312	523525.739	4581983.389	722	509488.4897	4588559.602	1132	522087.131	4591765.626
313	523447.873	4581900.963	723	509545.1659	4588602.607	1133	522091.776	4591763.579
314	523445.485	4581890.367	724	509654.3082	4588686.451	1134	522125.533	4591748.702
315	523431.911	4581866.375	725	509717.1892	4588742.232	1135	522195.501	4591747.92
316	523406.766	4581836.037	726	509759.0448	4588785.066	1136	522252.452	4591772.429
317	523371.306	4581801.339	727	509784.1825	4588808.649	1137	522271.775	4591789.379
318	523329.848	4581767.686	728	509811.1196	4588859.78	1138	522285.512	4591801.423
319	523279.994	4581706.969	729	509844.5062	4588902.517	1139	522310.59	4591831.926
320	523240.119	4581631.365	730	509863.1944	4588934.495	1140	522332.589	4591854.439
321	523186.559	4581595.293	731	509854.2609	4588974.625	1141	522373.876	4591859.689
322	523147.417	4581593.783	732	509836.9316	4589008.305	1142	522420.05	4591863.684
323	523114.71	4581584.938	733	509806.4833	4589077.831	1143	522437.41	4591865.185
324	523072.596	4581581.548	734	509805.823	4589134.996	1144	522484.517	4591883.637
325	523046.323	4581575.198	735	509815.8712	4589181.698	1145	522495.97	4591888.121
326	523002.655	4581573.591	736	509861.0072	4589307.152	1146	522514.207	4591908.981
327	522962.602	4581559.371	737	509889.5968	4589398.536	1147	522549.318	4591949.153
328	522927.014	4581546.293	738	509932.689	4589517.614	1148	522578.947	4591998.787
329	522896.787	4581530.565	739	510004.9088	4589681.497	1149	522597.867	4592013.312
330	522851.035	4581505.695	740	510074.7911	4589864.411	1150	522626.522	4592010.472
331	522790.75	4581483.832	741	510124.4795	4589962.391	1151	522646.986	4591981.516
332	522769.191	4581481.044	742	510159.6408	4590034.793	1152	522658.835	4591964.735
333	522745.551	4581475.268	743	510192.8561	4590092.349	1153	522687.904	4591926.915
334	522729.141	4581462.404	744	510195.796	4590103.428	1154	522775.431	4591919.973
335	522708.102	4581441.445	745	510213.1478	4590168.814	1155	522886.282	4591957.82
336	522689.732	4581433.136	746	510235.7035	4590232.601	1156	522986.11	4591987.596
337	522633.203	4581415.974	747	510242.4589	4590290.844	1157	523046.739	4591969.218
338	522576.994	4581404.599	748	510245.1455	4590333.225	1158	523064.683	4591929.679
339	522553.84	4581388.898	749	510237.3683	4590364.898	1159	523073.195	4591880.486
340	522530.979	4581365.504	750	510237.1114	4590387.129	1160	523089.816	4591818.671
341	522495.488	4581317.016	751	510241.0278	4590414.702	1161	523155.289	4591793.987
342	522441.778	4581252.442	752	510254.3739	4590450.854	1162	523228.448	4591791.651
343	522416.084	4581227.622	753	510265.7252	4590476.395	1163	523298.205	4591808.354
344	522382.125	4581190.146	754	510285.6488	4590507.291	1164	523360.911	4591748.663
345	522373.949	4581167.724	755	510299.1361	4590517.014	1165	523435.39	4591689.168
346	522366.714	4581140.267	756	510315.9383	4590505.765	1166	523466.804	4591664.08
347	522367.722	4581126.309	757	510323.4551	4590498.8	1167	523559.381	4591634.897
348	522374.482	4581072.533	758	510350.7939	4590479.918	1168	523694.4	4591645.991
349	522381.947	4581058.802	759	510390.5035	4590445.478	1169	523786.083	4591691.57

350	522401.845	4581039.564	760	510397.9627	4590441.329	1170	523869.278	4591693.362
351	522409.499	4581018.476	761	510406.4622	4590438.78	1171	523945.042	4591694.998
352	522407.907	4580972.93	762	510425.0891	4590436.577	1172	524068	4591648.718
353	522397.545	4580944.433	763	510473.4045	4590445.888	1173	524106.56	4591589.478
354	522385.162	4580902.562	764	510531.0111	4590461.965	1174	524121.41	4591566.66
355	522374.529	4580866.455	765	510582.8736	4590474.26	1175	524166.832	4591487.69
356	522371.805	4580845.68	766	510595.5643	4590471.817	1176	524221.458	4591439.03
357	522370.293	4580829.999	767	510626.9086	4590472.576	1177	524293.862	4591365.145
358	522365.56	4580799.887	768	510655.8811	4590472.514	1178	524331.654	4591259.056
359	522361.187	4580775.283	769	510676.7981	4590482.677	1179	524353.184	4591209.663
360	522357.583	4580757.461	770	510688.8936	4590497.312	1180	524359.278	4591195.677
361	522356.187	4580731.621	771	510689.7144	4590498.305	1181	524424.751	4591045.489
362	522354.792	4580705.781	772	510700.3002	4590509.54	1182	524487.858	4590913.021
363	522358.642	4580693.317	773	510716.4782	4590517.664	1183	524504.591	4590877.879
364	522361.828	4580683.002	774	510733.4865	4590522.623	1184	524531.436	4590833.44
365	522364.568	4580665.676	775	510735.2119	4590523.576	1185	524566.502	4590775.39
366	522364.355	4580647.47	776	510746.2418	4590538.987	1186	524651.766	4590661.335
367	522364.827	4580623.08	777	510751.3636	4590553.869	1187	524787.483	4590485.687
368	522354.524	4580582.162	778	510758.407	4590585.713	1188	524865.654	4590397.582
369	522335.473	4580545.535	779	510770.927	4590601.739	1189	524910.345	4590347.196
370	522310.314	4580507.491	780	510792.0259	4590608.335	1190	525183.598	4590107.838
371	522280.511	4580502.567	781	510805.7925	4590609.004	1191	525344.282	4589997.436
372	522226.57	4580481.201	782	510820.5964	4590609.724	1192	525406.12	4589954.952
373	522172.22	4580458.56	783	510852.3671	4590609.032	1193	525523.227	4589775.976
374	522140.862	4580461.162	784	510882.0696	4590604.082	1194	525568.859	4589593.064
375	522102.781	4580459.453	785	510912.3716	4590601.307	1195	525564.012	4589474.857
376	521998.016	4580440.041	786	510917.8956	4590600.392	1196	525527.752	4589384.279
377	521890.639	4580426.948	787	510941.2944	4590601.853	1197	525478.869	4589309.092
378	521867.855	4580420.336	788	510955.9171	4590607.181	1198	525426.749	4589275.075
379	521836.57	4580416.588	789	510963.6519	4590614.242	1199	525377.032	4589242.627
380	521806.293	4580435.713	790	510970.4481	4590620.446	1200	525275.17	4589179.264
381	521799.559	4580432.248	791	510977.8641	4590631.247	1201	525232.066	4588932.839
382	521791.683	4580417.764	792	510986.5118	4590638.491	1202	525225.582	4588895.759
383	521786.568	4580401.65	793	510990.6925	4590639.395	1203	525212.956	45888643.774
384	521783.179	4580384.222	794	510995.4423	4590643.97	1204	525204.174	45888326.545
385	521775.298	4580370.161	795	511012.3435	4590647.341	1205	525204.906	45888322.112
386	521767.767	4580362.454	796	511029.2754	4590648.066	1206	525237.597	4588124.834
387	521755.511	4580360.619	797	511058.468	4590644.146	1207	525279.302	4588013.387
388	521733.481	4580362.058	798	511076.4634	4590641.73	1208	525353.229	4587923.752
389	521711.82	4580368.158	799	511118.9388	4590630.914	1209	525370.751	4587902.515
390	521693.435	4580347.203	800	511158.5144	4590620.948	1210	525406.34	4587888.379
391	521665.416	4580317.246	801	511221.7969	4590618.237	1211	525545.669	4587833.024
392	521661.262	4580294.493	802	511227.0802	4590619.581	1212	525680.416	4587741.309
393	521659.974	4580275.272	803	511247.194	4590619.813	1213	525696.085	4587726.404

394	521660.252	4580251.145	804	511300.96	4590571.244	1214	525799.88	4587627.649
395	521655.509	4580221.88	805	511321.5685	4590530.123	1215	525805.809	4587595.074
396	521646.485	4580196.798	806	511336.5848	4590513.357	1216	525826.435	4587481.822
397	521636.152	4580175.089	807	511349.5085	4590494.448	1217	525858.853	4587367.157
398	521634.644	4580158.984	808	511358.271	4590469.139	1218	525940.861	4587265.509
399	521637.453	4580135.733	809	511360.7551	4590437.405	1219	526013.189	4587194.834
400	521631.746	4580116.617	810	511372.6079	4590419.543	1220	526073.262	4587108.469
401	521621.276	4580106.759	811	511400.3889	4590397.63	1221	526139.762	4587003.521
402	521592.177	4580097.11	812	511473.0477	4590340.238	1222	526221.986	4586883.218
403	521573.767	4580078.271	813	511526.4557	4590299.563	1223	526209.829	4586805.374
404	521551.996	4580057.276	814	511563.7687	4590260.436	1224	526197.747	4586728.021
405	521534.939	4580031.255	815	511570.3973	4590253.486	1225	526186.018	4586652.933
406	521497.661	4580006.385	816	511588.4816	4590232.533	1226	526164.089	4586512.559
407	521483.571	4580006.956	817	511616.5418	4590200.022	1227	526133.442	4586204.401
408	521458.622	4580004.551	818	511637.1081	4590161.085	1228	526169.046	4585924.266
409	521436.222	4580001.33	819	511644.9465	4590124.119	1229	526179.218	4585844.233
410	521413.409	4579997.257	820	511676.0134	4590092.715	1230	526194.997	4585720.091

ZONA ME PËRPARËSI ZHVILLIMIN E EKONOMISË MALORE
ZONA 2, NJESIA ADMINISTRATIVE ZERQAN, BASHKËIA BULQIZË, QARKU DIBER



Njësia Administrative	Zona	Sipërfaqe (ha)
Martanesh	Zona 1	15184
Zerqan	Zona 2	5400
Fushë - Bulqizë	Zona 3	3362
Shupenzë	Zona 4	2601
Gjortçë	Zona 5	2459
Ostren	Zona 6	3854
Bulqizë	Zona 7	443
Trebiisht	Zona 8	703

● 1:45,000



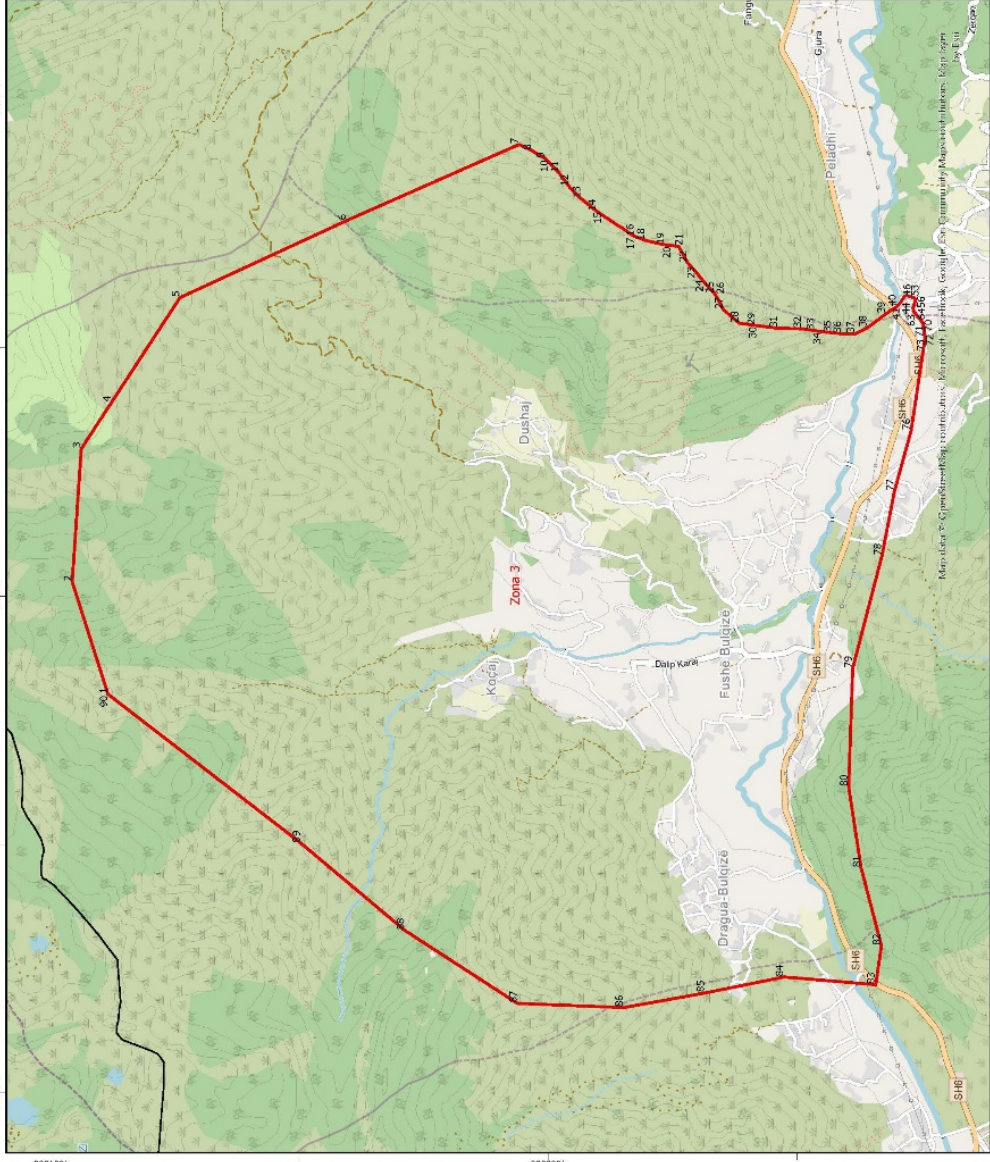
Legjendë

- Zona me përparësi zhvillimin e ekonomisë malore
- Bashkia Bulqizë
- Izopse
- Kategoritë e Rrjetit Rrugor
- Kategoritë C: Rruge Interurbane Dyvesore
- Kategoritë F: Rruge Lokale

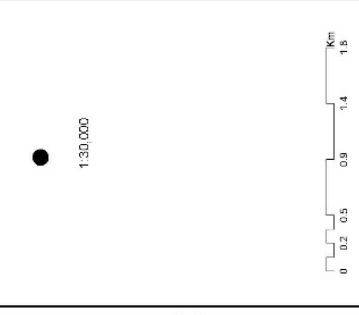
*Zona 2 në territorin e Njësies Administrative Zerqan, me sipërfaqe prej 5400 ha
 **Sistemi Koordinativ: KRGSJSH (Korniza Referenciale Gjeocentrike Shqiptare) EPSG 8070

Zona 2								
Njësia Administrative Zerqan								
Nr.	Koordinata X	Koordinata Y	Nr.	Koordinata X	Koordinata Y	Nr.	Koordinata X	Koordinata Y
1	526405.5646	4597065.098	62	534043.064	4597560.288	123	535045.9698	4595008.289
2	526415.5747	4597100.059	63	534070.8005	4597565.131	124	535025.1195	4594993.2
3	526417.6414	4597107.346	64	534102.1413	4597570.606	125	535021.4518	4594956.112
4	526417.6048	4597110.507	65	534141.7753	4597595.156	126	534935.0302	4594849.937
5	526417.4173	4597126.712	66	534162.6569	4597608.014	127	534706.249	4594568.864
6	526417.3344	4597133.884	67	534196.4507	4597628.823	128	534169.5148	4594193.838
7	526414.5435	4597135.582	68	534246.3284	4597660.374	129	533918.1601	4594021.858
8	526409.2136	4597138.832	69	534289.2841	4597695.286	130	533812.3266	4593770.504
9	526392.1762	4597149.21	70	534316.5978	4597714.191	131	533653.5763	4593572.066
10	526372.7329	4597162.601	71	534358.6449	4597709.165	132	533494.826	4593386.857
11	526365.4216	4597167.628	72	534400.36	4597673.171	133	533309.6173	4593188.419
12	526333.2663	4597194.548	73	534447.7918	4597618.655	134	533005.3458	4592910.606
13	526332.3167	4597195.348	74	534485.5587	4597566.778	135	532753.9911	4592646.022
14	526329.3022	4597199.945	75	534522.9434	4597547.942	136	532595.2408	4592593.106
15	526273.4242	4597285.016	76	534668.5641	4597555.309	137	532238.0526	4592077.167
16	526384.1347	4597522.634	77	534769.9007	4597560.433	138	531999.9271	4591653.833
17	526628.8747	4597654.926	78	534781.6693	4597504.804	139	531841.1768	4591296.645
18	526966.2192	4597760.759	79	534784.6139	4597483.758	140	531655.9681	4590833.623
19	527296.949	4597846.749	80	534791.2018	4597436.633	141	531470.7594	4590529.351
20	527568.1474	4597926.124	81	534845.177	4597350.948	142	531404.6134	4590132.476
21	527819.5021	4598018.728	82	534900.8275	4597308.983	143	531431.0718	4589881.121
22	527978.2524	4598091.489	83	534947.0558	4597278.934	144	531457.5302	4589642.995
23	528170.0757	4598177.479	84	534980.8764	4597260.934	145	531510.447	4589418.099
24	528342.0552	4598283.312	85	535226.8452	4597033.087	146	531563.3638	4589100.599
25	528520.6493	4598296.541	86	535258.8386	4596983.015	147	531589.8222	4588981.536
26	528844.7646	4598256.854	87	535266.3378	4596971.276	148	531894.0936	4588809.556
27	529034.4905	4598221.706	88	535278.905	4596924.44	149	532135.5879	4588512.939
28	529911.7867	4598349.979	89	535267.3044	4596887.709	150	532155.7594	4588260.028
29	530031.7833	4598367.524	90	535244.4017	4596837.742	151	532191.9592	4587806.154
30	530747.9487	4598306.653	91	535221.4576	4596790.495	152	532056.7703	4587516.463
31	531048.6656	4598217.078	92	535217.5168	4596758.405	153	531077.81	4587331.255
32	531499.3251	4598206.58	93	535214.4721	4596733.609	154	529887.1827	4587490.005
33	531578.8418	4598218.895	94	535220.4898	4596685.606	155	529146.3478	4587781.047
34	531854.406	4598164.249	95	535221.3201	4596680.424	156	528626.4829	4588478.826
35	532026.3855	4597965.812	96	535228.769	4596634.099	157	528375.1282	4588994.765
36	532251.2818	4597972.426	97	535238.7291	4596572.206	158	528306.7265	4589171.004
37	532515.8657	4598084.874	98	535282.0972	4596506.607	159	528292.1566	4589439.334
38	532833.3663	4598190.708	99	535294.2825	4596490.191	160	528407.8961	4589782.254
39	533044.7771	4598244.281	100	535344.8023	4596422.124	161	528857.4916	4590645.982
40	533172.2765	4598202.357	101	535368.9873	4596361.226	162	529248.255	4590992.373
41	533435.1444	4598115.924	102	535366.3795	4596303.84	163	529314.4009	4591336.332
42	533467.9864	4598068.075	103	535341.1023	4596222.161	164	529301.1717	4591759.666

ZONA ME PËRPARËSI ZHVILLIMIN E EKONOMISË MALORE
ZONA 3, NJESIA ADMINISTRATIVE FUSHË - BULQIZË, BASHKIA BULQIZË, QARKU DIBER



Njësia Administrative	Zona	Sipërfaqe (ha)
Martanesh	Zona 1	15184
Zerqan	Zona 2	5400
Fushë - Bulqizë	Zona 3	3362
Shupenzë	Zona 4	2601
Gjortçë	Zona 5	2459
Ostren	Zona 6	3854
Bulqizë	Zona 7	443
Trebiisht	Zona 8	703



Legjendë

- Zona me përparësi zhvillimin e ekonomisë malore
- Bashkia Bulqizë
- Izopse
- Kategori e Rrethi Rrugor
- Kategoria C: Rruga Interurbane Dytësore
- E: Rruga Urbane Dytësore
- Kategoria F: Rruga Lohiale

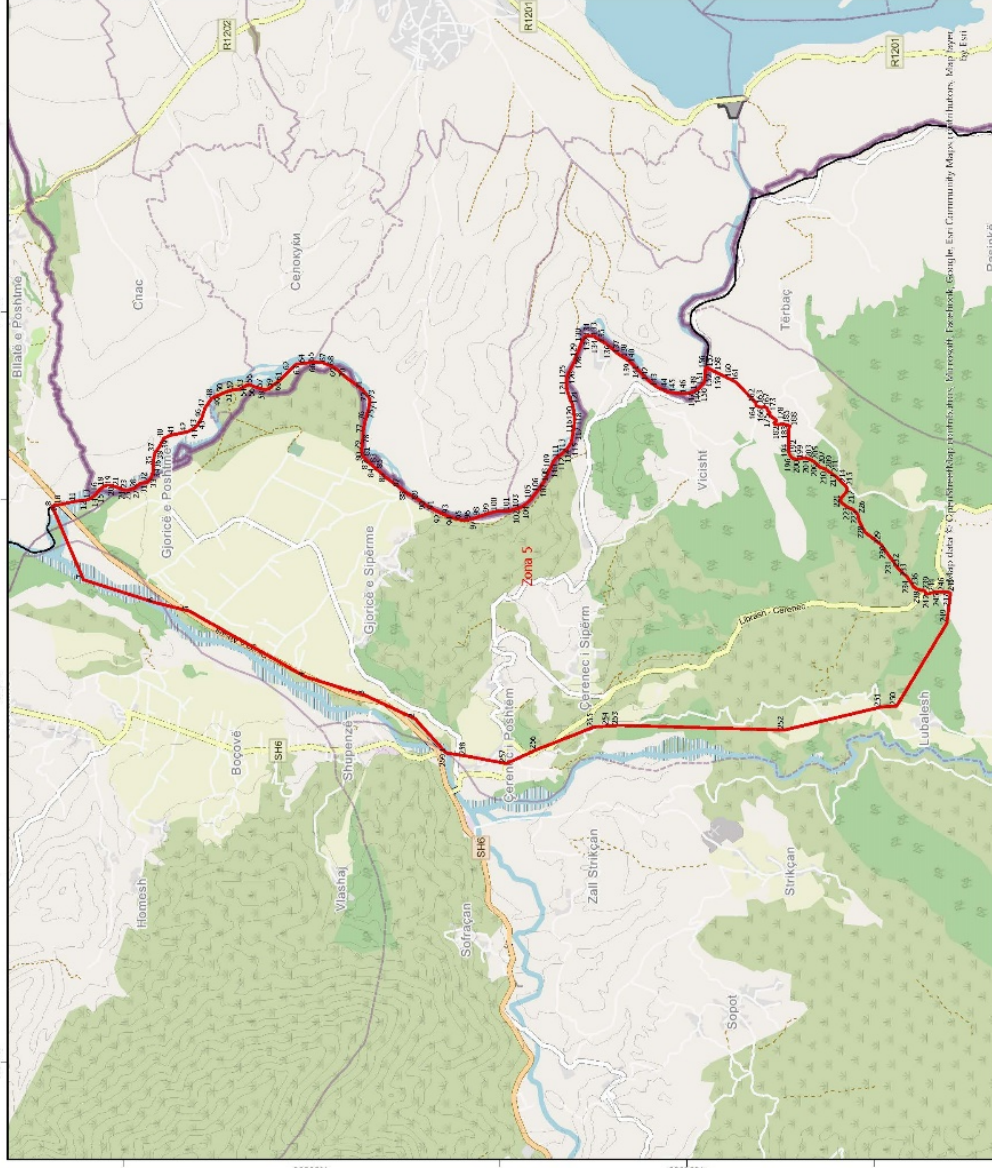
*Zona 3 në territorin e Njësies Administrative Fushë-Bulqizë, me sipërfaqe prej 3362 ha
 **Sistemi Koordinativ: KRGSJSH (Korniza Referenciale Gjeocentrike Shqipëtare) EPSG 8070

Zona 3								
Njësia Administrative Fushë - Bulqizë								
Nr.	Koordinata X	Koordinata Y	Nr.	Koordinata X	Koordinata Y	Nr.	Koordinata X	Koordinata Y
1	523210.485	4603547.11	31	526157.0993	4598152.75	61	526299.475	4597065.391
2	524115.497	4603834.88	32	526153.0896	4597958.88	62	526290.8296	4597059.479
3	525186.338	4603762.47	33	526137.8608	4597856.17	63	526272.7347	4597047.114
4	525558.563	4603519.38	34	526129.8902	4597802.3	64	526266.938	4597043.155
5	526403.984	4602967.27	35	526121.3495	4597719.89	65	526262.5619	4597039.193
6	527024.254	4601626.15	36	526113.0149	4597639.54	66	526226.761	4597006.785
7	527636.639	4600239.39	37	526111.1134	4597533.24	67	526216.8089	4597000.537
8	527587.818	4600135.67	38	526162.2857	4597433.79	68	526209.1114	4596995.706
9	527523.408	4600028.63	39	526273.4242	4597285.02	69	526198.8712	4596989.285
10	527488.009	4599994.31	40	526329.3022	4597199.94	70	526194.7406	4596988.317
11	527405.934	4599914.73	41	526332.3167	4597195.35	71	526156.8368	4596979.435
12	527297.435	4599835.32	42	526333.2663	4597194.55	72	526117.8412	4596975.862
13	527201.611	4599740.42	43	526365.4216	4597167.63	73	526075.7246	4596972.254
14	527099.907	4599614.2	44	526372.7329	4597162.6	74	526076.105	4596971.368
15	527067.813	4599569.36	45	526392.1762	4597149.21	75	526076.2055	4596971.13
16	526897.133	4599308.62	46	526409.2136	4597138.83	76	525331.0862	4597083.092
17	526896.57	4599307.13	47	526414.5435	4597135.58	77	524844.9292	4597217.205
18	526863.755	4599220.7	48	526417.3344	4597133.88	78	524325.2442	4597317.789
19	526828.053	4599063.97	49	526417.4173	4597126.71	79	523419.9864	4597552.485
20	526822.524	4599010.1	50	526417.6048	4597110.51	80	522464.4364	4597586.013
21	526816.825	4598954.43	51	526417.6414	4597107.35	81	521810.6391	4597485.429
22	526683.246	4598880.98	52	526415.5747	4597100.06	82	521184.4619	4597322.598
23	526608.983	4598814.47	53	526405.5646	4597065.1	83	520871.8533	4597368.081
24	526522.252	4598744.69	54	526405.3779	4597064.81	84	520933.6951	4598104.37
25	526434.083	4598663.47	55	526389.41	4597048.45	85	520804.7971	4598742.732
26	526429.451	4598659.21	56	526387.1261	4597046.11	86	520687.4489	4599396.529
27	526305.192	4598592.12	57	526383.1104	4597047.32	87	520720.977	4600251.495
28	526197.236	4598465.83	58	526357.3488	4597055.14	88	521307.7181	4601156.753
29	526179.999	4598334.33	59	526345.9215	4597058.8	89	522011.8075	4601994.954
30	526178.469	4598322.19	60	526324.4525	4597065.68	90	523210.4849	4603547.113

Zona 4
Njësia Administrative Shupenzë

Nr.	Koordinata X	Koordinata Y	Nr.	Koordinata X	Koordinata Y	Nr.	Koordinata X	Koordinata Y
1	528409.786	4605234.617	11	533254.8054	4607324.746	21	531399.6663	4602699.044
2	528583.309	4606403.895	12	533731.0563	4607113.079	22	530796.1611	4602665.516
3	529522.095	4607359.445	13	534260.2241	4606657.995	23	530182.0558	4602713.176
4	530460.88	4607828.838	14	534302.5575	4606054.744	24	529609.7516	4602945.665
5	531380.532	4608422.537	15	534203.2946	4605830.483	25	529237.106	4603369.605
6	532244.515	4608605.391	16	534081.9117	4604626.908	26	529153.2858	4603671.358
7	532472.564	4608566.455	17	533947.7994	4603989.874	27	528868.2972	4603872.526
8	533170.139	4608192.581	18	533696.3389	4603369.605	28	528650.3648	4604459.267
9	533244.222	4607832.747	19	532707.2609	4603051.088	29	528409.786	4605234.617
10	533138.388	4607599.914	20	531952.8794	4602916.976			

ZONA ME PËRPARËSI ZHVILLIMIN E EKONOMISË MALORE
ZONA 5, NJËSIA ADMINISTRATIVE GJORICË, BASHKIA BULQIZË, QARKU DIBER



Njësia Administrative	Zona	Sipërfaqe (ha)
Marianesh	Zona 1	15184
Zerqan	Zona 2	5400
Fushë - Bulqizë	Zona 3	3352
Shupenzë	Zona 4	2601
Gjiroçistë	Zona 5	2459
Ostren	Zona 6	3654
Bulqizë	Zona 7	443
Trebiisht	Zona 8	703

1:40.000



- Legjendë**
- Zona me përparësi zhvillimin e ekonomisë malore
 - Bashkia Bulqizë
 - Izopse
 - Kategoritë e Rrejt Rrugor
 - Kategoritë C, Rruge Interurbane Dyvesore
 - E. Rruge Urbane Dyvesore
 - Kategoritë F, Rruge Lokale

*Zona 5 në territorin e Njësies Administrative Gjiroçistë, me sipërfaqe prej 2459 ha
 **Sistemi Koordinativ: MZGJSH (koordinatë Referuese Gjeocentrike Shqipëri) EPSG:5870

Zona 5								
Njësia Administrative Gjoricë								
Nr.	Koordinata X	Koordinata Y	Nr.	Koordinata X	Koordinata Y	Nr.	Koordinata X	Koordinata Y
1	535300.6429	4598565.976	88	538072.9818	4598987.837	174	538934.6384	4595119.785
2	535666.1321	4598898.962	89	538002.0413	4598860.288	175	538925.8976	4595113.451
3	535915.7683	4599432.598	90	537941.8908	4598778.123	176	538916.3768	4595133.04
4	536114.2062	4600067.6	91	537893.1063	4598691.565	177	538892.5898	4595101.55
5	536812.9955	4601302.446	92	537857.9345	4598620.813	178	538847.1622	4595044.159
6	536906.7456	4601678.664	93	537844.4525	4598593.692	179	538817.5276	4595067.597
7	537147.6305	4602434.377	94	537802.7177	4598484.585	180	538815.7183	4595066.606
8	537932.657	4602768.054	95	537783.4268	4598391.578	181	538805.7167	4595061.148
9	537940.9572	4602737.047	96	537784.0027	4598341.799	182	538800.591	4595053.655
10	537952.9871	4602669.687	97	537795.9969	4598283.099	183	538803.4792	4594996.822
11	537983.1783	4602519.816	98	537826.3022	4598206.508	184	538807.2133	4594995.745
12	537998.5367	4602393.597	99	537859.1842	4598102.79	185	538809.6374	4594979.055
13	538013.4995	4602358.697	100	537880.5434	4598017.043	186	538805.408	4594958.927
14	538034.3946	4602325.85	101	537882.0879	4597883.543	187	538801.1614	4594940.299
15	538066.5073	4602295.781	102	537900.6869	4597840.761	188	538787.8809	4594900.007
16	538087.2261	4602278.153	103	537910.3399	4597788.824	189	538772.9216	4594908.008
17	538117.2697	4602255.34	104	537951.8799	4597719.151	190	538743.136	4594912.496
18	538143.5116	4602217.923	105	538011.4434	4597656.476	191	538702.9929	4594912.032
19	538155.1814	4602181.661	106	538082.2153	4597602.982	192	538643.892	4594913.209
20	538152.348	4602140.599	107	538184.9011	4597529.491	193	538575.1267	4594913.525
21	538139.6278	4602096.113	108	538303.2686	4597469.759	194	538521.9664	4594914.03
22	538125.5842	4602051.613	109	538342.2919	4597453.283	195	538485.279	4594905.423
23	538110.1024	4602017.022	110	538391.9591	4597432.314	196	538452.7961	4594885.348
24	538103.1916	4601985.177	111	538439.8424	4597401.185	197	538438.1976	4594862.138
25	538103.5057	4601958.048	112	538469.7289	4597360.797	198	538436.9089	4594852.459
26	538112.407	4601932.276	113	538501.9041	4597318.172	199	538432.3883	4594818.591
27	538117.8422	4601914.333	114	538552.2595	4597268.968	200	538436.0517	4594799.405
28	538118.9211	4601912.97	115	538616.0603	4597231.235	201	538439.1086	4594783.353
29	538119.4382	4601912.316	116	538706.7781	4597214.18	202	538447.6737	4594750.376
30	538123.6698	4601885.206	117	538783.8673	4597201.494	203	538436.7128	4594701.557
31	538173.5615	4601833.605	118	538865.3773	4597197.911	204	538434.3844	4594696.138
32	538190.3697	4601750.068	119	538866.4905	4597198.019	205	538421.1544	4594665.331
33	538238.3317	4601712.152	120	538944.4935	4597205.615	206	538404.308	4594643.576
34	538292.8726	4601692.416	121	539014.5067	4597217.74	207	538376.5568	4594609.7
35	538365.2792	4601693.254	122	539082.0477	4597247.941	208	538347.4241	4594581.08
36	538437.7906	4601685.042	123	539172.2158	4597278.403	209	538330.3069	4594532.57
37	538508.1178	4601670.015	124	539226.4687	4597283.556	210	538311.4228	4594501.888
38	538537.8475	4601643.203	125	539287.5619	4597284.263	211	538288.6696	4594464.918
39	538590.2828	4601609.865	126	539335.262	4597268.974	212	538288.2655	4594464.393
40	538656.2942	4601576.684	127	539387.6185	4597242.423	213	538237.5856	4594398.337
41	538688.8365	4601502.381	128	539478.6506	4597198.216	214	538176.9967	4594338.719

42	538722.5315	4601328.519	129	539571.8405	4597163.086	215	538146.7754	4594303.013
43	538754.9691	4601263.267	130	539680.9481	4597121.351	216	538111.6522	4594289.782
44	538765.571	4601251.819	131	539740.1975	4597085.828	217	538108.0562	4594288.429
45	538798.5105	4601216.248	132	539747.3783	4597051.966	218	538080.8348	4594298.719
46	538869.1523	4601174.069	133	539741.2968	4596990.794	219	538053.4363	4594324.325
47	538978.2075	4601136.86	134	539712.405	4596945.199	220	538023.6361	4594353.444
48	539080.8415	4601067.894	135	539670.2771	4596870.032	221	537988.172	4594363.638
49	539111.0163	4601002.616	136	539616.7309	4596803.786	222	537956.6649	4594336.172
50	539140.3429	4600935.773	137	539554.2125	4596730.646	223	537937.0463	4594306.721
51	539150.5302	4600912.553	138	539509.7956	4596657.716	224	537924.2328	4594287.474
52	539171.8112	4600833.594	139	539465.7874	4596600.889	225	537896.6447	4594228.238
53	539179.4113	4600763.528	140	539458.5123	4596591.495	226	537846.5504	4594178.167
54	539207.0614	4600720.851	141	539366.7357	4596504.439	227	537766.6287	4594159.564
55	539230.2908	4600669.071	142	539268.3016	4596405.991	228	537655.3697	4594100.542
56	539206.082	4600609.952	143	539199.2305	4596312.408	229	537520.6742	4593926.936
57	539188.5566	4600559.963	144	539148.4705	4596200.933	230	537438.8376	4593870.604
58	539173.4772	4600494.161	145	539138.1252	4596117.082	231	537357.6096	4593808.367
59	539187.5771	4600449.064	146	539132.6979	4595999.343	232	537269.1831	4593749.178
60	539221.9892	4600408.728	147	539149.2696	4595936.17	233	537175.6245	4593649.292
61	539261.0838	4600354.868	148	539176.2531	4595885.571	234	537149.677	4593631.604
62	539380.1591	4600234.043	149	539181.6541	4595875.443	235	537104.9688	4593601.123
63	539446.6158	4600162.396	150	539194.521	4595864.089	236	537070.2906	4593582.284
64	539456.7402	4600069.73	151	539215.6089	4595845.48	237	537051.1716	4593552.879
65	539469.2323	4599968.038	152	539252.5309	4595812.898	238	537038.6847	4593510.576
66	539468.1731	4599957.052	153	539263.7829	4595811.217	239	537031.6221	4593467.254
67	539461.1504	4599884.213	154	539322.8059	4595802.396	240	537018.7604	4593457.371
68	539428.231	4599795.575	155	539390.7394	4595798.656	241	537006.6411	4593452.499
69	539388.2617	4599729.485	156	539399.6463	4595797.674	242	536999.3915	4593449.584
70	539303.3784	4599633.456	157	539412.5649	4595796.25	243	536995.3075	4593428.997
71	539176.4199	4599457.734	158	539372.2958	4595714.548	244	537006.4959	4593396.692
72	539097.9059	4599397.987	159	539329.5755	4595627.858	245	537015.7883	4593340.593
73	539066.4375	4599379.519	160	539297.0974	4595561.952	246	537020.722	4593287.676
74	539066.4244	4599379.521	161	539257.388	4595481.372	247	537015.9324	4593234.657
75	538975.7719	4599392.048	162	539039.3391	4595267.523	248	537006.993	4593186.738
76	538844.0895	4599428.996	163	539020.4173	4595264.333	249	536685.3045	4593227.101
77	538751.0827	4599448.286	164	539003.7306	4595260.788	250	535802.3547	4593761.778
78	538597.0614	4599460.082	165	538993.2621	4595234.285	251	535790.5698	4593930.672
79	538529.0754	4599468.347	166	538986.8149	4595213.021	252	535545.3509	4594961.131
80	538465.8242	4599458.563	167	538988.5675	4595190.371	253	535595.5297	4596726.875
81	538465.4516	4599458.152	168	538991.4176	4595168.844	254	535588.3193	4596830.363
82	538436.7758	4599426.545	169	538986.7063	4595158.384	255	535577.184	4596990.181
83	538391.9929	4599385.292	170	538985.8974	4595157.405	256	535333.6838	4597606.97
84	538346.7045	4599331.798	171	538976.8106	4595146.374	257	535188.1627	4597924.47
85	538333.948	4599316.731	172	538956.4813	4595136.845	258	535269.0899	4598352.798
86	538237.8823	4599209.257	173	538941.0079	4595124.411	259	535300.6429	4598565.976
87	538128.7116	4599060.898						

ZONA ME PËRPARËSI ZHVILLIMIN E EKONOMISË MALORE
ZONA 6, NJËSIA ADMINISTRATIVE OSTREN, BASHKIA BULQIZË, QARKU DIBER



Njësia Administrative	Zona	Sipërfaqe (ha)
Martanesh	Zona 1	15184
Zerqan	Zona 2	5400
Fushë - Bulqizë	Zona 3	3362
Shupenzë	Zona 4	2601
Gjoricë	Zona 5	2459
Ostren	Zona 6	3854
Bulqizë	Zona 7	443
Trebiisht	Zona 8	703

1:40,000

Legjendë

- Zona me përparësi zhvillim e ekonomisë malore
- Bashkia Bulqizë
- Katërgjithë e Rrjetit Strujor
- Kategoria C: Rrugë Interurbane Dytesore
- Kategoria F: Rrugë Lokale

*Zona 6 në territorin e Njësisë Administrative Ostren, me sipërfaqe prej 3854 ha
 **Sistemi Koordinatë: KRGJ.BH (Komiza Referuese Gjeoziale Shqipëri) EPSG 8870

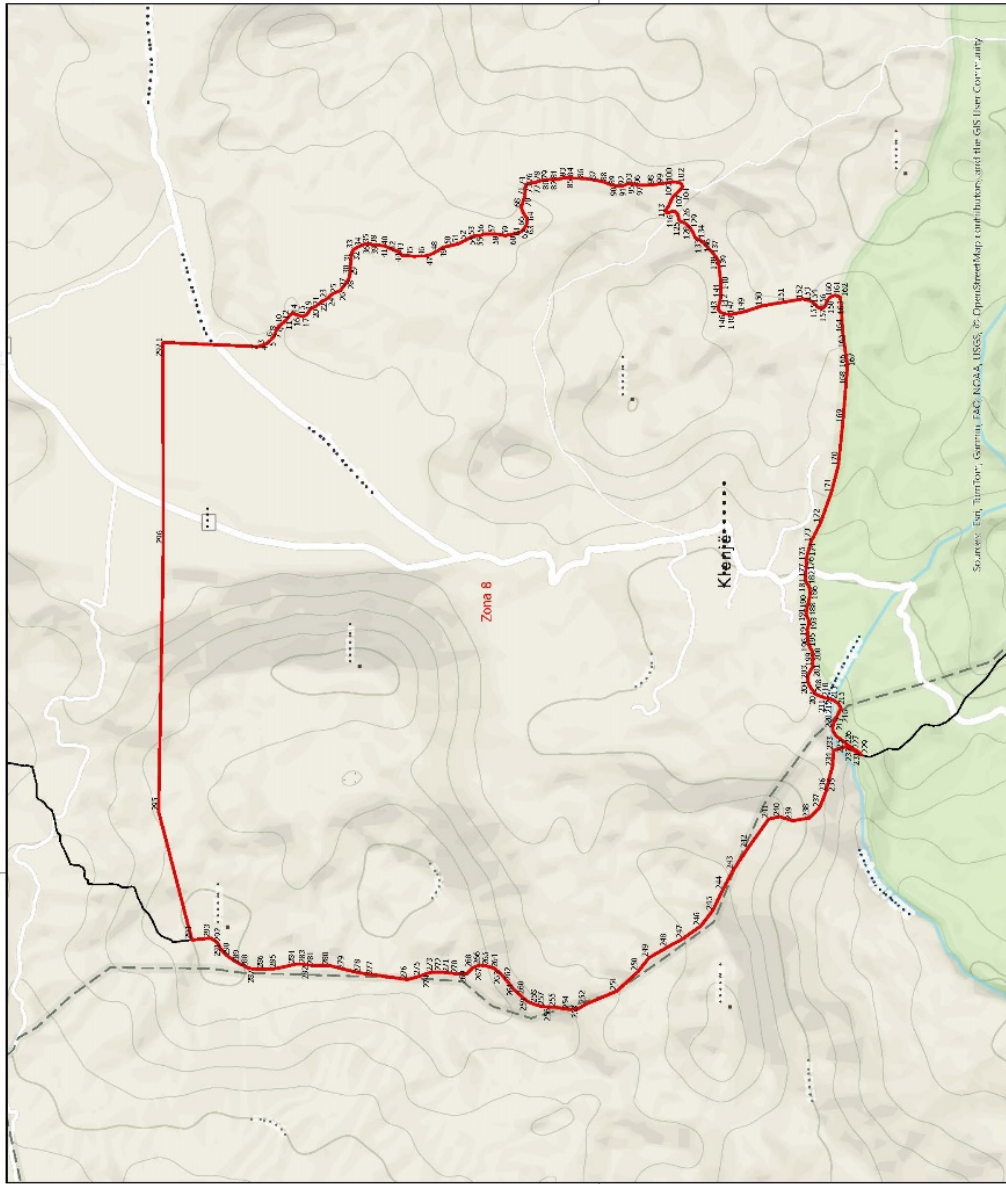


Zona 6								
Njësia Administrative Ostren								
Nr.	Koordinata X	Koordinata Y	Nr.	Koordinata X	Koordinata Y	Nr.	Koordinata X	Koordinata Y
1	537929.892	4591666.623	85	538986.8149	4595213.021	169	541984.4075	4593232.96
2	538061.8665	4591826.092	86	538993.2621	4595234.285	170	541964.5398	4593189.73
3	537966.2932	4592116.855	87	539003.7306	4595260.788	171	541931.0438	4593150.87
4	537966.2932	4592579.876	88	539020.4173	4595264.333	172	541883.9973	4593109.59
5	537886.9181	4592870.919	89	539039.3391	4595267.523	173	541882.127	4593075.63
6	537867.4668	4593186.337	90	539257.388	4595481.372	174	541886.9661	4593048.53
7	537595.8758	4593294.253	91	539297.0974	4595561.952	175	541887.5154	4593001.01
8	537357.7504	4593294.253	92	539329.5755	4595627.858	176	541913.1377	4592937.94
9	537159.3125	4593307.482	93	539372.2958	4595714.548	177	541914.8641	4592919.1
10	536999.3915	4593449.584	94	539412.5649	4595796.25	178	541918.317	4592881.43
11	537018.7604	4593457.371	95	539483.6415	4595788.415	179	541921.2599	4592822.62
12	537031.6221	4593467.254	96	539576.596	4595773.649	180	541921.966	4592761.53
13	537038.6847	4593510.576	97	539637.7678	4595767.567	181	541906.5453	4592725.14
14	537051.1716	4593552.879	98	539673.3456	4595781.38	182	541893.4136	4592686.52
15	537070.2906	4593582.284	99	539673.8142	4595781.562	183	541894.2766	4592611.85
16	537104.9688	4593601.123	100	539738.831	4595834.364	184	541905.9303	4592582.56
17	537149.677	4593631.604	101	539772.1437	4595889.061	185	541924.6075	4592532.99
18	537175.6245	4593649.292	102	539823.3662	4595936.927	186	541950.125	4592478.97
19	537269.1831	4593749.178	103	539823.6366	4595937.18	187	542010.1067	4592380.09
20	537357.6096	4593808.367	104	539875.4435	4595958.146	188	542063.9518	4592255.33
21	537438.8376	4593870.604	105	539952.3757	4595959.036	189	542078.585	4592200.76
22	537520.6742	4593926.936	106	540002.3125	4595946.036	190	542081.508	4592184.39
23	537655.3697	4594100.542	107	540052.5895	4595903.62	191	542092.1955	4592124.54
24	537766.6287	4594159.564	108	540075.6615	4595865.415	192	542102.922	4592077.57
25	537846.5504	4594178.167	109	540101.1271	4595815.923	193	542126.4792	4592021.83
26	537896.6447	4594228.238	110	540122.2243	4595752.803	194	542143.5109	4591980.02
27	537924.2328	4594287.474	111	540141.268	4595671.554	195	541815.9884	4591905.19
28	537937.0463	4594306.721	112	540162.339	4595610.697	196	541617.5505	4591839.04
29	537956.6649	4594336.172	113	540190.0149	4595565.756	197	541352.9667	4591680.29
30	537988.172	4594363.638	114	540237.9506	4595530.102	198	541366.1959	4591548
31	538023.6361	4594353.444	115	540292.7006	4595492.264	199	540797.3406	4591362.79
32	538053.4363	4594324.325	116	540351.662	4595481.631	200	540400.4648	4591376.02
33	538080.8348	4594298.719	117	540464.798	4595482.939	201	540413.694	4591151.12
34	538108.0562	4594288.429	118	540559.9892	4595470.462	202	540241.7145	4590688.1
35	538111.6522	4594289.782	119	540655.128	4595462.51	203	540274.2954	4590211.51
36	538146.7754	4594303.013	120	540734.4277	4595454.375	204	540294.6312	4589788.52
37	538176.9967	4594338.719	121	540827.6179	4595419.244	205	540082.9641	4589431.33
38	538237.5856	4594398.337	122	540888.9731	4595397.324	206	539778.6927	4589232.89
39	538288.2655	4594464.393	123	541000.1603	4595371.453	207	539527.338	4589034.45
40	538288.6696	4594464.918	124	541054.3675	4595351.442	208	539090.7747	4588664.04
41	538311.4228	4594501.888	125	541077.433	4595342.927	209	538945.2535	4588280.39

42	538330.3069	4594532.57	126	541094.8847	4595340.489	210	538945.2535	4587909.97
43	538347.4241	4594581.08	127	541152.2334	4595332.477	211	538932.0243	4587486.64
44	538376.5568	4594609.7	128	541211.3521	4595308.267	212	538588.0653	4587288.2
45	538404.308	4594643.576	129	541211.4323	4595301.33	213	538177.9603	4587116.22
46	538421.1544	4594665.331	130	541211.7445	4595274.327	214	537794.3137	4587010.39
47	538434.3844	4594696.138	131	541228.1593	4595224.73	215	537170.9389	4586617.47
48	538436.7128	4594701.557	132	541249.1255	4595172.923	216	536096.9606	4586485.58
49	538447.6737	4594750.376	133	541261.0149	4595123.274	217	535848.9249	4586611.38
50	538439.1086	4594783.353	134	541261.512	4595080.282	218	535148.4751	4586785.49
51	538436.0517	4594799.405	135	541284.7409	4595028.501	219	534778.0577	4586891.32
52	538432.3883	4594818.591	136	541321.7033	4594963.301	220	534301.8067	4586997.16
53	538436.9089	4594852.459	137	541347.2472	4594907.021	221	534025.4104	4587132.35
54	538438.1976	4594862.138	138	541370.4763	4594855.24	222	534023.9937	4587460.18
55	538452.7961	4594885.348	139	541398.3092	4594796.723	223	534010.7645	4587989.35
56	538485.279	4594905.423	140	541423.8532	4594740.443	224	533997.5353	4588505.28
57	538521.9664	4594914.03	141	541428.928	4594692.978	225	534195.9732	4588809.56
58	538575.1267	4594913.525	142	541429.2681	4594663.562	226	534222.4316	4589047.68
59	538643.892	4594913.209	143	541452.4972	4594611.781	227	534079.4208	4589352.77
60	538702.9929	4594912.032	144	541488.7008	4594612.2	228	534081.256	4589354.59
61	538743.136	4594912.496	145	541509.6536	4594606.745	229	534124.4924	4589386.04
62	538772.9216	4594908.008	146	541513.6691	4594605.7	230	534157.8264	4589406.05
63	538787.8809	4594900.007	147	541571.3883	4594506.794	231	534153.5139	4589435.54
64	538801.1614	4594940.299	148	541627.0278	4594392.023	232	534128.8562	4589513.19
65	538805.408	4594958.927	149	541662.8524	4594229.499	233	534107.846	4589604.19
66	538809.6374	4594979.055	150	541686.2644	4594161.879	234	534133.2517	4589626.34
67	538807.2133	4594995.745	151	541727.6475	4594105.782	235	534164.0408	4589676.12
68	538803.4792	4594996.822	152	541746.3248	4594056.211	236	534182.7893	4589693.43
69	538800.591	4595053.655	153	541787.7078	4594000.114	237	534202.597	4589711.73
70	538805.7167	4595061.148	154	541813.3563	4593934.783	238	534206.4263	4589791.61
71	538815.7183	4595066.606	155	541827.482	4593887.423	239	534209.5029	4589854.38
72	538817.5276	4595067.597	156	541837.1869	4593830.959	240	534205.7781	4589893.62
73	538847.1622	4595044.159	157	541853.6538	4593776.837	241	534201.9286	4589934.12
74	538892.5898	4595101.55	158	541881.4341	4593722.845	242	534181.4167	4589998.35
75	538916.3768	4595133.04	159	541906.769	4593684.667	243	534202.1824	4590076.69
76	538925.8976	4595113.451	160	541913.9233	4593653.067	244	534772.2622	4590237.85
77	538934.6384	4595119.785	161	541930.3902	4593598.945	245	534915.8999	4590531.65
78	538941.0079	4595124.411	162	541955.9342	4593542.664	246	535197.0203	4590746.63
79	538956.4813	4595136.845	163	541965.3413	4593520.803	247	535654.6229	4590859.27
80	538976.8106	4595146.374	164	541979.1891	4593488.621	248	536434.6521	4591128.05
81	538985.8974	4595157.405	165	541997.8664	4593439.05	249	536947.6454	4591071.75
82	538986.7063	4595158.384	166	541995.8913	4593414.134	250	537423.8963	4591309.87
83	538991.4176	4595168.844	167	541989.4433	4593384.64	251	537820.7721	4591534.77
84	538988.5675	4595190.371	168	541985.938	4593296.341	252	537929.892	4591666.62

Zona 7								
Njësia Administrative Bulqizë								
Nr.	Koordinata X	Koordinata Y	Nr.	Koordinata X	Koordinata Y	Nr.	Koordinata X	Koordinata Y
1	518418.9941	4599388.078	12	519813.4525	4600027.86	22	516884.4077	4595974.946
2	518634.065	4599705.024	13	519831.0769	4599981.44	23	516708.375	4595461.456
3	519565.7284	4600417.654	14	519830.6399	4599974.25	24	516443.1172	4594687.696
4	519638.8478	4600358.135	15	519828.4614	4599939.46	25	515832.6644	4594911.409
5	519677.693	4600311.039	16	519821.1108	4599902.08	26	516090.6561	4595630.987
6	519679.5357	4600308.805	17	519832.4614	4599861.82	27	516223.7124	4596145.471
7	519698.0329	4600286.38	18	519846.3969	4599828.13	28	516810.892	4597204.307
8	519713.1649	4600234.903	19	519854.847	4599807.69	29	517910.2914	4598695.982
9	519740.3737	4600166.849	20	518059.16	4597922.28	30	518256.8566	4599166.205
10	519767.3646	4600115.89	21	516943.0452	4596057.04	31	518418.9941	4599388.078
11	519795.8361	4600072.711						

ZONA ME PËRPARËSI ZHVILLIMIN E EKONOMISË MALORE
ZONA 8, NJËSIA ADMINISTRATIVE TREBISHT, BASHKIA BULQIZË, QARKU DIBËR



Njësia Administrative	Zona	Sipërfaqe (ha)
Marbanesh	Zona 1	15184
Zërqan	Zona 2	5400
Fushë - Bulqizë	Zona 3	3352
Shqipëriçë	Zona 4	2601
Gjoricë	Zona 5	2459
Ostren	Zona 6	3654
Bulqizë	Zona 7	443
Trebisht	Zona 8	703

●
1:15,000



- Legjendë**
- Zona me përparësi zhvillim e ekonomisë malore
 - Bashkia Bulqizë
 - Izoipse
 - Kategoria e Rrethit Rrugor
 - Kategoria C: Rruge Interurbane Dydrejore
 - Kategoria F: Rruga Lokale

*Zona 8 në territorin e Njësies Administrative Trebisht, me sipërfaqe prej 703 ha
 **Sistemi Koordinues: KRGSJSH (Komiza Referencë Gjendore Shqipëri) EPSG:5670

Zona 8
Njësia Administrative Trebisht

Nr.	Koordinata X	Koordinata Y	Nr.	Koordinata X	Koordinata Y	Nr.	Koordinata X	Koordinata Y
1	540088.5789	4583718.166	100	540720.9046	4581709.492	199	538871.21	4581160.124
2	540072.1644	4583341.949	101	540720.0168	4581694.658	200	538846.7311	4581157.735
3	540077.6532	4583325.072	102	540717.5289	4581680.864	201	538825.3403	4581159.03
4	540082.57	4583311.893	103	540709.1479	4581673.091	202	538813.7071	4581157.837
5	540095.9929	4583295.636	104	540702.0048	4581672.744	203	538779.0801	4581176.496
6	540110.4318	4583283.097	105	540695.613	4581676.112	204	538758.4174	4581177.846
7	540129.0625	4583274.312	106	540687.0581	4581683.425	205	538742.5678	4581175.016
8	540142.8988	4583268.118	107	540676.6107	4581694.157	206	538732.0481	4581169.072
9	540154.3804	4583259.516	108	540669.3729	4581702.015	207	538717.8658	4581159.378
10	540164.0674	4583245.863	109	540660.2704	4581710.91	208	538705.2776	4581149.175
11	540180.1309	4583230.166	110	540646.9665	4581716.845	209	538698.5183	4581138.508
12	540194.5514	4583219.214	111	540625.9445	4581726.396	210	538692.8603	4581124.149
13	540200.9768	4583212.935	112	540616.0692	4581733.429	211	538687.2025	4581109.79
14	540201.1173	4583200.761	113	540609.1298	4581738.379	212	538684.7329	4581094.408
15	540195.4717	4583185.342	114	540603.3338	4581738.546	213	538678.5761	4581077.396
16	540191.3469	4583175.765	115	540598.8534	4581734.29	214	538668.2183	4581060.924
17	540191.4751	4583164.649	116	540598.9114	4581729.261	215	538655.8854	4581051.866
18	540199.2767	4583151.513	117	540600.8052	4581723.488	216	538645.2166	4581047.375
19	540213.685	4583141.62	118	540604.8082	4581711.285	217	538617.1548	4581062.469
20	540223.8586	4583131.679	119	540604.6648	4581705.354	218	538596.0735	4581073.808
21	540230.9233	4583115.878	120	540603.2486	4581699.62	219	538581.3294	4581078.403
22	540249.1897	4583092.794	121	540598.8558	4581694.911	220	538567.3975	4581081.419
23	540260.5441	4583072.278	122	540592.9664	4581691.454	221	538557.8923	4581079.324
24	540270.1883	4583062.331	123	540586.4391	4581688.203	222	538551.5768	4581076.074
25	540280.9462	4583047.631	124	540572.7997	4581685.976	223	538543.2992	4581070.817
26	540293.9863	4583018.664	125	540565.9763	4581681.402	224	538534.2552	4581063.169
27	540325.7246	4582994.656	126	540562.4562	4581672.122	225	538528.916	4581053.471
28	540338.9402	4582987.185	127	540558.153	4581663.714	226	538501.7498	4581019.515
29	540349.1574	4582982.644	128	540552.01	4581654.02	227	538484.8287	4580994.834
30	540376.7027	4582981.268	129	540539.353	4581641.176	228	538477.6952	4580982.178
31	540424.6189	4582976.315	130	540525.5171	4581632.886	229	538466.5917	4580969.477
32	540449.6576	4582971.945	131	540520.4744	4581629.439	230	538463.0526	4580968.845
33	540454.8077	4582966.075	132	540505.2904	4581623.97	231	538479.6311	4580996.494
34	540463.0051	4582953.04	133	540499.4106	4581619.667	232	538496.2212	4581026.321
35	540476.913	4582922.283	134	540496.5342	4581612.01	233	538480.7443	4581076.834
36	540476.1198	4582917.615	135	540494.9933	4581606.38	234	538417.276	4581080.446
37	540476.2518	4582906.181	136	540483.2682	4581591.269	235	538376.9161	4581092.681
38	540473.4388	4582893.019	137	540434.4852	4581546.387	236	538317.4833	4581106.813
39	540472.0088	4582870.132	138	540413.7469	4581532.476	237	538255.8119	4581131.503
40	540468.4859	4582845.103	139	540376.8789	4581527.027	238	538215.1346	4581171.253
41	540463.1272	4582832.335	140	540322.9593	4581520.053	239	538203.7709	4581238.859

42	540449.5191	4582800.413	141	540265.761	4581521.934	240	538220.1413	4581287.733
43	540442.296	4582785.888	142	540247.3032	4581524.897	241	538211.1625	4581332.082
44	540430.9795	4582775.592	143	540225.6327	4581531	242	538093.7787	4581415.399
45	540428.3311	4582729.82	144	540215.4914	4581528.978	243	538010.5761	4581471.593
46	540429.4867	4582684.728	145	540208.5773	4581522.545	244	537931.7774	4581513.019
47	540432.8533	4582668.249	146	540202.9777	4581512.316	245	537850.8868	4581552.305
48	540450.4144	4582632.875	147	540199.9628	4581498.304	246	537788.9468	4581600.276
49	540463.3239	4582615.236	148	540199.1798	4581481.735	247	537739.4616	4581669.559
50	540470.7862	4582581.792	149	540209.988	4581425.954	248	537704.8653	4581732.663
51	540478.5451	4582551.705	150	540232.8097	4581356.758	249	537663.8217	4581804.16
52	540489.3885	4582529.595	151	540247.6465	4581269.902	250	537610.4211	4581845.879
53	540507.7831	4582495.395	152	540259.899	4581198.175	251	537533.2506	4581929.66
54	540510.5581	4582484.31	153	540251.7637	4581165.742	252	537481.1571	4582052.25
55	540509.1349	4582469.999	154	540240.4984	4581151.001	253	537464.9594	4582079.592
56	540515.6947	4582452.075	155	540226.6703	4581138.135	254	537460.2695	4582116.516
57	540515.3069	4582424.505	156	540223.0496	4581121.576	255	537469.2147	4582169.641
58	540514.381	4582394.636	157	540227.5839	4581114.004	256	537468.9949	4582188.697
59	540508.9498	4582369.797	158	540239.1056	4581106.514	257	537472.7654	4582228.976
60	540514.376	4582340	159	540258.8852	4581099.118	258	537481.9515	4582258.729
61	540524.2706	4582308.35	160	540267.9027	4581088.422	259	537492.2573	4582283.2
62	540538.4064	4582294.536	161	540275.0951	4581070.717	260	537516.3016	4582309.948
63	540555.0391	4582284.563	162	540266.0968	4581049.686	261	537538.2407	4582335.613
64	540566.5903	4582284.316	163	540258.1694	4581049.142	262	537570.7665	4582361.4
65	540581.3874	4582286.604	164	540125.5856	4581040.03	263	537599.0698	4582386.079
66	540589.7885	4582292.63	165	540064.3189	4581031.886	264	537622.0554	4582412.815
67	540602.4049	4582300.399	166	540016.1537	4581025.483	265	537631.2537	4582441.509
68	540618.8471	4582306.942	167	539993.2012	4581022.432	266	537635.1952	4582466.966
69	540629.8965	4582303.681	168	539963.0225	4581024.825	267	537630.7529	4582484.915
70	540649.0212	4582297.972	169	539772.0206	4581039.97	268	537623.1712	4582499.651
71	540664.7582	4582292.225	170	539603.064	4581058.11	269	537600.6947	4582520.568
72	540681.702	4582291.997	171	539498.2912	4581085.026	270	537600.2916	4582555.504
73	540696.5236	4582292.168	172	539377.2639	4581127.825	271	537604.1232	4582590.489
74	540705.4508	4582289.306	173	539300.4727	4581167.118	272	537607.9303	4582627.592
75	540715.7022	4582281.801	174	539260.4374	4581177.743	273	537607.625	4582654.059
76	540717.1289	4582268.264	175	539228.1029	4581185.919	274	537602.0263	4582680.465
77	540716.8715	4582253.861	176	539210.6939	4581183.841	275	537592.2295	4582703.645
78	540724.2269	4582240.393	177	539203.3755	4581184.575	276	537578.1319	4582755.365
79	540727.8883	4582216.717	178	539199.1038	4581185.003	277	537597.4781	4582891.117
80	540730.2646	4582194.298	179	539191.0578	4581185.81	278	537603.2805	4582938.83
81	540730.5883	4582178.175	180	539153.3056	4581188.551	279	537618.4155	4583003.593
82	540730.7532	4582163.883	181	539143.6619	4581184.745	280	537633.6116	4583063.062
83	540737.9582	4582135.907	182	539133.9668	4581178.402	281	537633.974	4583123.419
84	540738.6525	4582121.621	183	539131.6076	4581176.389	282	537634.7884	4583144.605
85	540735.7146	4582100.94	184	539123.7041	4581173.121	283	537638.7177	4583171.12

86	540734.609	4582059.104	185	539113.8019	4581171.022	284	537638.4245	4583196.529
87	540727.2762	4582010.038	186	539103.4934	4581169.712	285	537621.677	4583271.511
88	540720.828	4581981.587	187	539089.5891	4581170.346	286	537618.9977	4583320.186
89	540707.653	4581948.823	188	539069.2914	4581174.479	287	537619.6288	4583357.252
90	540704.9182	4581928.886	189	539057.3446	4581177.518	288	537623.5703	4583382.709
91	540704.351	4581908.295	190	539039.032	4581181.674	289	537640.1304	4583415.724
92	540709.5646	4581896.92	191	539016.2025	4581185.416	290	537668.2016	4583460.518
93	540713.897	4581888.5	192	538993.3413	4581174.238	291	537694.3509	4583488.349
94	540714.8417	4581880.04	193	538982.7666	4581173.058	292	537724.8693	4583504.583
95	540713.7032	4581868.591	194	538959.3582	4581180.065	293	537741.5149	4583530.187
96	540709.6492	4581852.874	195	538913.3543	4581178.477	294	537734.3077	4583604.221
97	540707.4113	4581826.589	196	538897.7859	4581174.718	295	538239.7347	4583735.155
98	540710.4651	4581782.154	197	538886.4632	4581168.77	296	539292.5791	4583716.489
99	540715.4544	4581745.958	198	538880.1416	4581166.05	297	540088.5789	4583718.166