

VENDIM

Nr. 180, datë 19.3.2026

PËR SHPALLJEN E DISA ZONAVE ME PËRPARËSI ZHVILLIMIN E EKONOMISË MALORE NË BASHKINË MIRDITË

Në mbështetje të nenit 100 të Kushtetutës dhe të pikës 1, të nenit 4, të ligjit nr. 20/2025, “Për paketën e maleve”, me propozimin e ministrit të Shtetit për Pushtetin Vendor, Këshilli i Ministrave

VENDOSI:

1. Shpalljen “Zonë me përparësi zhvillimin e ekonomisë malore” në territorin e Bashkisë Mirditë të zonave, si më poshtë vijon:

a) Zona nr. 1, fshatrat Fan, Bisakë, Klos, Konaj, Shëngjin, Sang, Thirrë, Xhuxhë, Shtrungaj, Zall-Xhuxhë, Katundi i Ri, Dardhëz, Hebe, Domgjon, Gjakëz dhe Munellë, pjesë e Njesisë Administrative Fan, Bashkia Mirditë, qarku Lezhë, me sipërfaqe 17088 (shtatëmbëdhjetë mijë e tetëdhjetë e tetë) ha, sipas hartës në sistemin KRGJSH;

b) Zona nr. 2, fshatrat Lurth dhe Ujë, pjesë e njësive administrative Kthellë dhe Rrëshen, Bashkia Mirditë, qarku Lezhë, me sipërfaqe 1470 (një mijë e katërqind e shtatëdhjetë) ha, sipas hartës në sistemin KRGJSH;

c) Zona nr. 3, fshatrat Kullaxhi, Ndërshen, Lgjin, Bulshar, Planet, Nënshajt, Grykë-Orosh, Mashtërkor, Shtrungaj dhe Lajthizë, pjesë e njësive administrative Orosh dhe Fan, Bashkia Mirditë, qarku Lezhë, me sipërfaqe 9078 (nëntë mijë e shtatëdhjetë e tetë) ha, sipas hartës në sistemin KRGJSH;

ç) Zona nr. 4, fshatrat Kodër-Rrëshen, Tarazh, Malaj, Malaj i Epërm, Perlat Qendër, Perlat i Sipërm, Shebe, Tharr, Trojë, Prosek; qyteti Kurbnesh, fshatrat Lufaj, Bardhaj, Lëkundë, Zajs, Kthellë e Sipërme, Kurbnesh-fshat, Mërkuth, Kumbull, pjesë e njësive administrative Rrëshen, Kthellë dhe Selitë, Bashkia Mirditë, qarku Lezhë, me sipërfaqe 19731 (nëntëmbëdhjetë mijë e shtatëqind e tridhjetë e një) ha, sipas hartës në sistemin KRGJSH;

d) Zona nr. 5, fshatrat Gëziq, Kullaxh dhe Pshqesh, pjesë e njësive administrative Rrëshen dhe Orosh, Bashkia Mirditë, qarku Lezhë, me sipërfaqe 1565 (një mijë e pesëqind e gjashtëdhjetë e pesë) ha, sipas hartës në sistemin KRGJSH;

dh) Zona nr. 6, fshatrat Kaçinar, Arrëz, Kuzhnen, Simon, Shëngjergj, Shtuf, Shpërdhezë, Bukmirë dhe Pshqesh, pjesë e njësive administrative Kaçinar, Orosh dhe Rrëshen, Bashkia Mirditë, qarku Lezhë, me sipërfaqe 10599 (dhjetë mijë e pesëqind e nëntëdhjetë e nëntë) ha, sipas hartës në sistemin KRGJSH;

e) Zona nr. 7, fshatrat Fierzë, Bulshizë, Fang, Rasfik, Katund i Vjetër, Munaz, Rreja e Zezë, Rreja e Velës, Vau Shkezë, Rrethi i Sipërm, Livadhëz, Bulger, pjesë e Njesisë Administrative Rubik, Bashkia Mirditë, qarku Lezhë, me sipërfaqe 12563 (dymbëdhjetë mijë e pesëqind e gjashtëdhjetë e tre) ha, sipas hartës në sistemin KRGJSH.

2. Shtirja, kufijtë dhe pikat e hyrjes e të daljes së këtyre zonave përcaktohen në hartën treguese sipas sistemit KRGJSH, që i bashkëlidhet këtij vendimi.

3. Llojet e aktiviteteve, që do të zhvillohen në këtë zonë, janë:

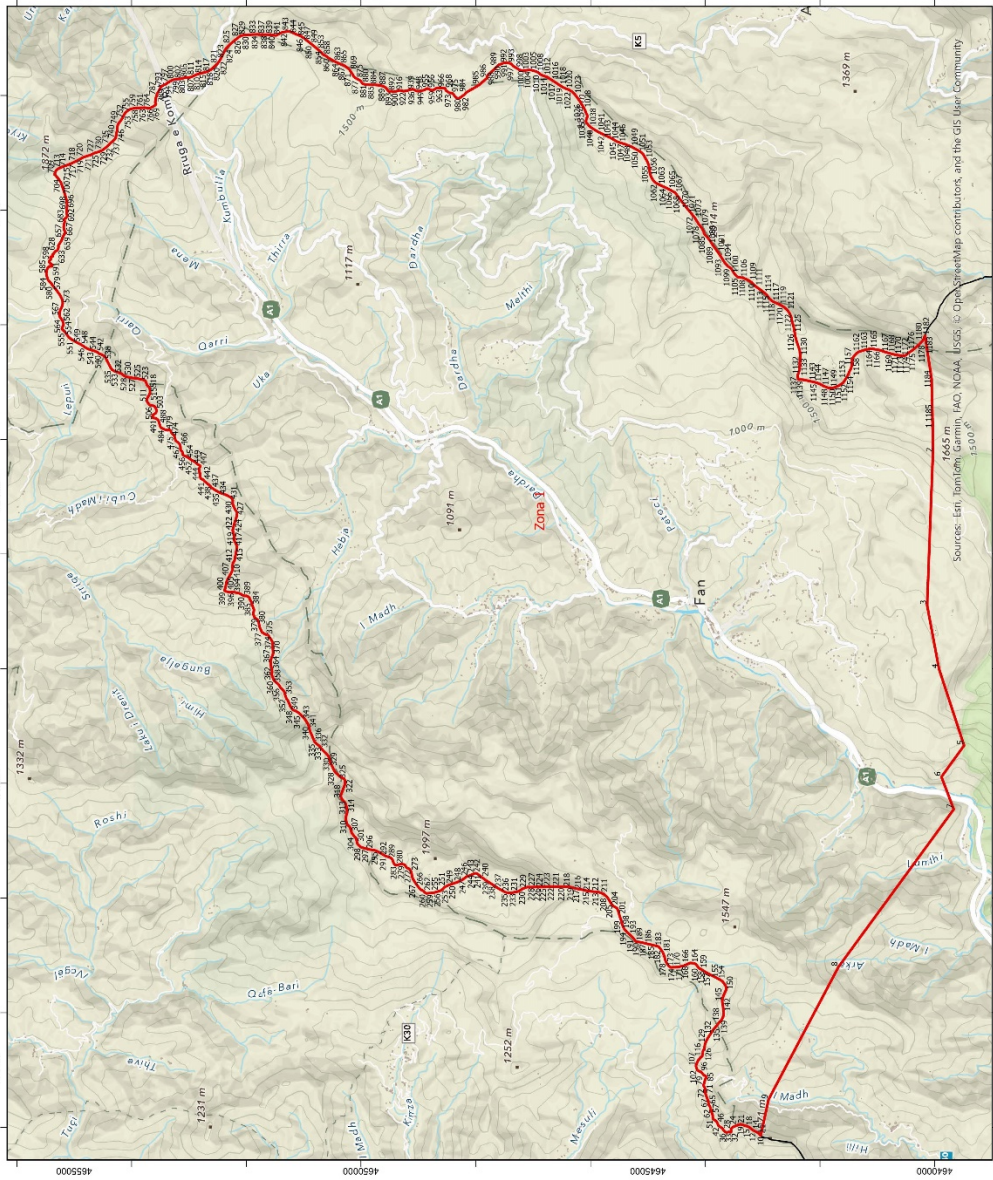
- a) të zhvillimit ekonomik;
- b) të zhvillimit industrial;
- c) të zhvillimit turistik.

4. Ngarkohen Ministria e Ekonomisë dhe Inovacionit, Agjencia Shtetërore e Kadastrës dhe Bashkia Mirditë për zbatimin e këtij vendimi.

Ky vendim hyn në fuqi pas botimit në Fletoren Zyrtare.

KRYEMINISTËR
Edi Rama

ZONA ME PËRPARËSI ZHVILLIMIN E EKONOMISË MALORE
ZONA 1, NJËSIA ADMINISTRATIVE FAN, BASHKIA MIRDITË, QARKU LEZHË



Njësia Administrative	Zona	Sipërfaqe (ha)
Fan	Zona 1	17088
Kthellë dhe Rrëshen	Zona 2	1470
Orosht dhe Fan	Zona 3	9078
Rrëshen, Kthellë dhe Selltë	Zona 4	19731
Rrëshen dhe Orosht	Zona 5	1565
Kaçinar, Orosht dhe Rrëshen	Zona 6	10599
Rubik	Zona 7	12563



- Legjendë**
- Zona me përparësi zhvillimin e ekonomisë malore
 - Bashkia Mirditë
 - Ndërrëtesa
 - Izolipase
- Kategorië të Rrjetit Rrugor**
- Kategoritë A, Autostrade
 - B, Rrëzë Interurbane Kryesore
 - E, Rrëzë Ujshme Dytësore
 - Kategoritë F, Rrëzë Lokale

*Zona 1 në karrirën e Njësias Administrative Fan, me sipërfaqe prej 17088 ha
 **Sistemi Koordinativ: MGRS/SH (Komiza Release Gjendësitë Shqipëri) EPSG:6870

Zona 1
Njësia Administrative Fan

Nr.	Koordinata X	Koordinata Y	Nr.	Koordinata X	Koordinata Y	Nr.	Koordinata X	Koordinata Y
1	516290.5625	4640035.919	396	513337.6264	4652238.301	791	522111.816	4653507.834
2	515766.8053	4640029.95	397	513331.9541	4652286.186	792	522143.945	4653491.122
3	513106.0012	4640131.456	398	513341.4246	4652326.04	793	522167.7833	4653466.449
4	511994.4012	4639923.556	399	513348.072	4652354.014	794	522188.7561	4653421.595
5	510660.2012	4639486.756	400	513365.1565	4652382.133	795	522195.3682	4653407.106
6	510113.3616	4639881.741	401	513371.5798	4652375.858	796	522212.1842	4653382.372
7	509546.8127	4639666.827	402	513412.348	4652364.904	797	522224.1211	4653367.665
8	506796.2194	4641678.051	403	513455.6557	4652353.98	798	522243.2825	4653333.994
9	504486.2194	4642896.051	404	513479.8567	4652347.913	799	522263.8934	4653296.139
10	503857.2659	4643033.189	405	513512.9169	4652344.489	800	522276.0692	4653260.986
11	503892.5586	4643069.314	406	513564.1508	4652323.066	801	522282.2683	4653233.887
12	503918.0406	4643106.026	407	513608.6919	4652297.561	802	522284.2956	4653204.218
13	503939.9319	4643150.398	408	513648.7546	4652274.621	803	522289.0727	4653154.972
14	503957.7936	4643180.018	409	513686.9174	4652252.768	804	522297.4189	4653111.931
15	503980.581	4643207.594	410	513736.2	4652237.348	805	522310.7869	4653070.63
16	504001.9681	4643235.154	411	513788.4322	4652242.297	806	522314.7061	4653046.865
17	504017.6721	4643269.651	412	513848.2628	4652230.295	807	522314.3337	4653006.804
18	504025.7068	4643301.257	413	513884.0552	4652205.042	808	522317.492	4652983.09
19	504034.5396	4643324.469	414	513934.1132	4652194.933	809	522321.6716	4652961.01
20	504044.0645	4643348.389	415	513962.9961	4652189.506	810	522337.5015	4652924.779
21	504048.6472	4643375.754	416	514054.7846	4652172.261	811	522349.8198	4652901.393
22	504049.6084	4643396.273	417	514129.1689	4652160.926	812	522359.0344	4652879.931
23	504041.7417	4643424.032	418	514184.0924	4652183.418	813	522368.8124	4652858.196
24	504031.9057	4643450.808	419	514230.8242	4652205.554	814	522373.49	4652841.443
25	504016.6275	4643487.884	420	514285.6263	4652208.85	815	522380.3668	4652818.69
26	504006.5538	4643511.016	421	514347.544	4652215.905	816	522395.4722	4652756.423
27	503991.7255	4643533.532	422	514410.4319	4652236.648	817	522404.3082	4652719.411
28	503969.3679	4643553.159	423	514452.8062	4652227.163	818	522421.6775	4652671.293
29	503954.2931	4643548.781	424	514516.5075	4652211.431	819	522451.0402	4652615.612
30	503940.2928	4643548.338	425	514576.4123	4652193.08	820	522507.0926	4652553.24
31	503924.0421	4643548.709	426	514635.0621	4652173.445	821	522558.8619	4652497.82
32	503914.2037	4643551.675	427	514670.7066	4652166.242	822	522606.8685	4652464.766
33	503912.956	4643562.585	428	514721.724	4652158.987	823	522641.4157	4652444.861
34	503919.9602	4643586.476	429	514803.6598	4652207.351	824	522813.2965	4652358.631
35	503914.6804	4643606.862	430	514867.4689	4652235.06	825	522897.5697	4652278.38
36	503909.6383	4643630.893	431	514939.5148	4652234.463	826	522974.2879	4652185.436
37	503919.2154	4643650.332	432	514987.5581	4652266.176	827	523019.7881	4652127.142
38	503932.7364	4643667.857	433	515002.4831	4652296.919	828	523038.9881	4652102.156
39	503952.7186	4643683.776	434	515026.684	4652338.996	829	523046.9848	4652077.038
40	503979.6863	4643701.177	435	515071.1032	4652463.021	830	523052.2379	4652046.987
41	503994.842	4643722.642	436	515118.3929	4652546.124	831	523055.5458	4652003.607
42	504012.7494	4643748.341	437	515154.5655	4652602.427	832	523058.2945	4651931.007
43	504025.1337	4643767.253	438	515196.4959	4652638.556	833	523062.9701	4651890.444
44	504037.6324	4643776.362	439	515202.5695	4652643.789	834	523064.1447	4651849.841

45	504051.0432	4643779.32	440	515238.0387	4652688.189	835	523066.0358	4651807.845
46	504072.7777	4643789.097	441	515266.7375	4652724.113	836	523063.8238	4651757.397
47	504098.9378	4643803.688	442	515295.2187	4652747.449	837	523059.3721	4651718.829
48	504111.3712	4643818.398	443	515316.1792	4652792.277	838	523062.7454	4651669.847
49	504121.2774	4643833.64	444	515350.3017	4652806.645	839	523059.3619	4651599.777
50	504131.7633	4643847.207	445	515414.6975	4652809.238	840	523057.2153	4651543.728
51	504143.3891	4643859.108	446	515480.7368	4652827.485	841	523046.748	4651480.579
52	504155.6469	4643864.853	447	515537.685	4652798.677	842	523101.2045	4651374.068
53	504172.679	4643869.533	448	515549.5478	4652818.161	843	523123.1018	4651252.824
54	504187.8842	4643870.461	449	515563.9179	4652842.135	844	523074.4898	4651143.609
55	504206.2321	4643870.395	450	515573.902	4652858.792	845	523032.3012	4651040.484
56	504221.0449	4643873.228	451	515616.5972	4652907.898	846	523003.6211	4650998.746
57	504241.5305	4643882.011	452	515629.8332	4652938.254	847	522958.5002	4650940.975
58	504259.2252	4643889.92	453	515644.3919	4652962.289	848	522935.5225	4650911.555
59	504273.3199	4643894.286	454	515657.4188	4652978.968	849	522910.1748	4650880.131
60	504283.1044	4643895.941	455	515676.8846	4653003.892	850	522880.0634	4650842.801
61	504295.154	4643895.521	456	515703.84	4653052.91	851	522855.5645	4650812.429
62	504328.6046	4643906.036	457	515716.1478	4653086.935	852	522833.7292	4650785.359
63	504365.4107	4643920.47	458	515737.0907	4653108.288	853	522814.1004	4650762.979
64	504383.755	4643932.729	459	515758.2385	4653110.653	854	522793.0669	4650739.395
65	504398.2403	4643939.621	460	515784.6672	4653114.138	855	522777.3655	4650721.79
66	504414.9923	4643944.298	461	515796.176	4653125.919	856	522773.3553	4650717.308
67	504438.7821	4643945.976	462	515807.6726	4653138.759	857	522743.1289	4650683.402
68	504457.4816	4643951.796	463	515820.2896	4653146.317	858	522715.5613	4650661.96
69	504475.9043	4643957.333	464	515841.4621	4653146.565	859	522692.2857	4650616.169
70	504530.853	4643977.301	465	515867.9279	4653146.874	860	522660.4842	4650571.992
71	504580.5098	4643994.687	466	515883.0496	4653149.116	861	522630.3099	4650524.426
72	504614.0368	4644002.081	467	515903.7085	4653153.46	862	522620.1627	4650505.82
73	504636.9896	4644003.469	468	515926.9637	4653168.739	863	522598.7807	4650465.793
74	504676.2356	4644000.846	469	515943.7039	4653185.875	864	522576.351	4650422.468
75	504682.625	4644005.402	470	515959.3484	4653206.174	865	522551.6794	4650364.822
76	504695.7035	4644012.837	471	515970.8078	4653222.19	866	522531.1616	4650307.296
77	504710.1855	4644020.009	472	515989.7147	4653235.116	867	522507.4899	4650271.444
78	504722.1339	4644028.272	473	516013.9889	4653241.752	868	522480.4735	4650234.153
79	504731.0537	4644032.017	474	516047.7909	4653248.5	869	522449.4462	4650195.934
80	504742.286	4644029.627	475	516067.7812	4653259.321	870	522430.9602	4650185.734
81	504769.03	4644018.175	476	516093.9377	4653286.096	871	522406.649	4650173.561
82	504802.7334	4644010.444	477	516121.2148	4653307.59	872	522379.5863	4650152.236
83	504830.8484	4644001.529	478	516148.6525	4653315.322	873	522344.7886	4650133.622
84	504852.8247	4643990.581	479	516161.22	4653327.115	874	522322.5537	4650118.656
85	504879.2299	4643984.166	480	516167.3987	4653342.01	875	522303.2995	4650088.318
86	504886.5153	4643989.093	481	516167.8195	4653357.101	876	522290.9084	4650069.966
87	504894.5688	4643995.069	482	516160.1989	4653375.011	877	522277.2068	4650043.894
88	504899.2516	4644001.847	483	516165.1457	4653404.714	878	522261.4373	4650014.998
89	504902.4818	4644013.089	484	516185.7741	4653451.541	879	522248.2969	4650000.839
90	504906.2918	4644022.657	485	516200.2733	4653479.239	880	522225.3618	4649985.864
91	504910.6978	4644029.151	486	516215.9549	4653496.363	881	522205.2602	4649968.122
92	504925.9744	4644040.253	487	516242.3341	4653504.082	882	522193.7492	4649934.373

93	504940.681	4644052.189	488	516275.0403	4653513.993	883	522188.085	4649879.684
94	504957.0615	4644064.705	489	516305.6416	4653522.821	884	522183.9684	4649812.407
95	504963.6885	4644072.906	490	516332.0084	4653531.599	885	522184.6918	4649765.875
96	504969.4785	4644080.816	491	516348.761	4653547.677	886	522180.7119	4649698.88
97	504970.7515	4644091.755	492	516364.3683	4653571.152	887	522166.7505	4649623.085
98	504973.1774	4644099.907	493	516373.5743	4653598.788	888	522148.1529	4649584.491
99	504978.6776	4644108.655	494	516375.5185	4653613.633	889	522136.833	4649570.353
100	504986.3987	4644119.109	495	516378.5212	4653628.491	890	522126.3273	4649558.466
101	504997.4154	4644135.204	496	516386.9037	4653636	891	522108.0119	4649543.685
102	505008.5301	4644142.896	497	516396.4067	4653638.229	892	522076.0575	4649521.463
103	505021.0647	4644148.925	498	516430.4683	4653622.745	893	522073.3286	4649515.268
104	505032.4856	4644154.38	499	516440.1073	4653613.329	894	522068.1346	4649504.283
105	505043.9392	4644157.035	500	516448.8361	4653591.197	895	522071.3725	4649490.875
106	505057.6366	4644159.435	501	516461.7252	4653575.466	896	522075.7372	4649476.92
107	505068.8068	4644162.367	502	516497.867	4653563.183	897	522078.6819	4649464.629
108	505082.2796	4644160.003	503	516525.3172	4653569.856	898	522075.6697	4649458.711
109	505103.6403	4644153.809	504	516563.2423	4653586.181	899	522066.2253	4649451.878
110	505152.3574	4644131.689	505	516584.1305	4653610.777	900	522062.6213	4649446.954
111	505168.146	4644122.909	506	516590.1855	4653636.258	901	522060.5599	4649443.569
112	505179.4632	4644113.238	507	516593.0893	4653659.585	902	522060.5893	4649441.048
113	505197.5773	4644097.202	508	516599.206	4653679.773	903	522061.6056	4649437.978
114	505210.8093	4644091.474	509	516612.7827	4653695.813	904	522064.4456	4649434.65
115	505215.929	4644084.811	510	516636.9209	4653714.095	905	522067.8671	4649429.508
116	505229.0377	4644065.637	511	516653.723	4653725.937	906	522069.4615	4649424.905
117	505240.9412	4644053.731	512	516690.7132	4653731.663	907	522069.2239	4649421.26
118	505253.5641	4644052.197	513	516711.8982	4653730.852	908	522067.793	4649411.859
119	505267.8772	4644049.843	514	516752.3982	4653708.032	909	522067.3146	4649404.851
120	505277.1522	4644047.15	515	516786.5342	4653686.197	910	522068.6551	4649398.004
121	505300.4538	4644042.66	516	516814.7515	4653678.319	911	522071.8488	4649388.377
122	505315.5907	4644041.717	517	516860.285	4653677.792	912	522075.018	4649380.85
123	505329.3339	4644040.196	518	516893.0407	4653683.469	913	522076.4952	4649374.285
124	505343.4028	4644034.758	519	516918.25	4653700.704	914	522078.1469	4649364.78
125	505362.0281	4644022.93	520	516935.9746	4653724.204	915	522079.2302	4649355.969
126	505399.1283	4644012.159	521	516953.86	4653733.942	916	522082.5525	4649347.324
127	505422.1269	4644009.626	522	516991.8594	4653743.915	917	522085.5699	4649342.647
128	505445.702	4644005.699	523	517023.4081	4653762.283	918	522087.9727	4649326.939
129	505470.4496	4643997.304	524	517037.9074	4653789.98	919	522087.2302	4649309.547
130	505493.5299	4643987.77	525	517061.0932	4653889.776	920	522084.7067	4649292.196
131	505546.1144	4643961.09	526	517069.7303	4653966.109	921	522081.47	4649281.513
132	505606.1297	4643924.698	527	517079.6487	4654023.398	922	522078.5133	4649270.834
133	505659.7764	4643888.209	528	517088.6445	4654069.031	923	522073.2768	4649263.49
134	505697.1473	4643866.236	529	517099.8442	4654107.278	924	522071.9483	4649257.312
135	505740.7123	4643827.829	530	517111.2293	4654129.645	925	522073.4043	4649252.567
136	505776.7891	4643796.737	531	517132.0927	4654156.358	926	522075.9904	4649246.994
137	505812.7841	4643772.647	532	517145.6694	4654172.399	927	522078.0765	4649239.696
138	505843.2386	4643743.24	533	517165.1401	4654227.682	928	522078.4318	4649233.257
139	505885.6542	4643709.072	534	517188.7094	4654294.661	929	522078.3849	4649225.273
140	505933.5197	4643687.921	535	517219.887	4654344.787	930	522078.8639	4649220.237

141	505955.3152	4643680.472	536	517254.5745	4654366.368	931	522080.333	4649214.371
142	506014.8388	4643680.466	537	517308.243	4654394.524	932	522082.978	4649203.757
143	506067.2871	4643686.68	538	517382.9606	4654433.513	933	522084.2242	4649192.987
144	506137.9238	4643694.507	539	517446.1321	4654463.897	934	522086.5466	4649186.012
145	506189.6311	4643704.214	540	517479.3652	4654519.341	935	522088.9763	4649181.838
146	506233.7834	4643701.227	541	517496.8299	4654565.073	936	522087.1787	4649179.856
147	506278.0419	4643689.138	542	517523.9215	4654602.447	937	522090.5953	4649175.134
148	506318.1483	4643672.8	543	517543.4664	4654651.379	938	522094.8913	4649167.061
149	506355.4539	4643656.428	544	517550.1417	4654671.969	939	522096.9336	4649160.082
150	506395.5848	4643637.989	545	517575.655	4654753.794	940	522098.9841	4649152.402
151	506428.575	4643631.371	546	517605.6873	4654811.318	941	522101.2918	4649146.687
152	506479.6365	4643650.296	547	517632.8036	4654846.575	942	522102.7543	4649141.382
153	506547.5059	4643701.385	548	517658.7745	4654889.229	943	522102.841	4649133.959
154	506574.3394	4643742.314	549	517681.5201	4654936.081	944	522104.0643	4649125.15
155	506602.4262	4643795.863	550	517699.1581	4654966.992	945	522103.0061	4649119.815
156	506649.6445	4643890.251	551	517724.058	4655010.693	946	522106.6069	4649111.314
157	506710.6704	4644001.606	552	517745.8192	4655051.181	947	522112.6456	4649102.334
158	506752.6302	4644066.521	553	517775.0526	4655086.462	948	522092.0627	4649055.913
159	506767.6667	4644098.209	554	517809.6535	4655115.453	949	522077.1653	4649026.528
160	506786.3266	4644119.435	555	517867.3835	4655158.479	950	522076.3403	4648988.418
161	506814.8055	4644139.375	556	517876.7201	4655165.192	951	522084.4337	4648947.871
162	506845.9952	4644167.05	557	517910.764	4655200.325	952	522091.1833	4648913.659
163	506857.6451	4644188.894	558	517934.3875	4655216.287	953	522097.8229	4648888.336
164	506863.6201	4644216.975	559	517954.4008	4655205.597	954	522112.0495	4648866.912
165	506866.0124	4644252.017	560	518006.4413	4655186.877	955	522121.1311	4648850.507
166	506862.9013	4644278.591	561	518020.7123	4655188.164	956	522122.5788	4648835.284
167	506850.7287	4644301.559	562	518049.4885	4655194.663	957	522115.1376	4648819.957
168	506834.1998	4644337.78	563	518076.7693	4655209.268	958	522108.9218	4648808.454
169	506816.9217	4644378.195	564	518096.2342	4655221.54	959	522098.9852	4648789.287
170	506807.2639	4644425.701	565	518121.792	4655239.767	960	522091.6033	4648768.881
171	506801.3439	4644452.943	566	518135.6847	4655249.453	961	522091.8998	4648743.484
172	506794.393	4644488.603	567	518157.4687	4655255.03	962	522103.5805	4648722.03
173	506793.3048	4644541.784	568	518187.9843	4655256.507	963	522122.9397	4648695.585
174	506789.3383	4644581.654	569	518221.0795	4655252.972	964	522128.2117	4648679.136
175	506787.6928	4644602.643	570	518266.8864	4655240.342	965	522128.3303	4648668.977
176	506804.9035	4644628.054	571	518306.6493	4655217.557	966	522129.1456	4648599.135
177	506836.1013	4644655.028	572	518342.2541	4655206.448	967	522127.1395	4648553.391
178	506875.0339	4644679.292	573	518367.5349	4655200.441	968	522126.1069	4648533.058
179	506923.4149	4644700.028	574	518401.1281	4655202.234	969	522105.8781	4648525.202
180	506985.9709	4644714.2	575	518429.0952	4655206.062	970	522084.4092	4648514.791
181	507047.3012	4644739.425	576	518457.656	4655219.001	971	522063.1774	4648484.063
182	507103.6076	4644775.096	577	518527.2832	4655253.429	972	522053.1816	4648469.976
183	507154.2391	4644817.003	578	518561.2821	4655280.438	973	522043.2747	4648448.269
184	507159.5629	4644840.874	579	518592.5455	4655301.812	974	522043.4377	4648434.301
185	507178.3185	4644913.922	580	518681.3692	4655371.479	975	522042.3606	4648417.778
186	507200.9485	4645015.026	581	518726.4976	4655404.92	976	522037.4294	4648405.02
187	507214.3396	4645067.703	582	518753.478	4655433.247	977	522022.369	4648389.604
188	507222.9927	4645106.32	583	518781.2324	4655455.281	978	522006.0388	4648374.173

189	507236.8633	4645177.91	584	518834.935	4655474.116	979	521987.1243	4648362.522
190	507238.6045	4645208.742	585	518887.3109	4655486.633	980	521964.5041	4648341.938
191	507290.6526	4645249.266	586	518930.7724	4655482.939	981	521943.3909	4648301.05
192	507324.6267	4645278.373	587	518975.7243	4655471.56	982	521979.6286	4648243.052
193	507364.0716	4645318.749	588	519003.2204	4655455.774	983	522019.5871	4648192.717
194	507411.0959	4645369.718	589	519021.0282	4655430.072	984	522052.9739	4648161.356
195	507451.2736	4645407.302	590	519019.1239	4655413.242	985	522187.4442	4647939.54
196	507497.1835	4645433.748	591	519021.4619	4655392.961	986	522305.0913	4647806.064
197	507523.0005	4645441.752	592	519036.9727	4655384.038	987	522354.7773	4647795.375
198	507557.2555	4645455.357	593	519052.3034	4655390.52	988	522430.7045	4647710.124
199	507617.3324	4645467.963	594	519067.4705	4655411.006	989	522512.9498	4647623.546
200	507673.0939	4645490.322	595	519079.8695	4655428.658	990	522534.9259	4647600.693
201	507781.9796	4645521.004	596	519104.954	4655439.456	991	522568.8979	4647510.05
202	507824.4539	4645541.807	597	519117.1744	4655429.595	992	522568.1839	4647451.217
203	507842.2992	4645572.828	598	519124.5002	4655429.36	993	522564.3913	4647416.157
204	507860.8039	4645607.358	599	519132.4963	4655416.288	994	522555.5583	4647392.944
205	507900.998	4645643.541	600	519140.4302	4655408.537	995	522537.5981	4647371.726
206	507948.341	4645667.203	601	519148.0186	4655406.385	996	522517.4883	4647354.684
207	507978.9285	4645686.467	602	519155.8281	4655409.277	997	522508.5245	4647342.674
208	508009.4916	4645707.832	603	519166.9756	4655414.17	998	522485.8672	4647303.893
209	508035.1206	4645731.94	604	519174.8081	4655415.102	999	522467.3131	4647273.564
210	508067.5718	4645771.535	605	519179.8593	4655414.32	1000	522451.5188	4647246.768
211	508092.1739	4645823.642	606	519182.6667	4655413.793	1001	522437.8041	4647213.234
212	508106.2243	4645879.829	607	519185.2169	4655411.302	1002	522437.7953	4647189.983
213	508111.0006	4645950.613	608	519186.3994	4655405.993	1003	522438.4948	4647130.046
214	508117.357	4646006.009	609	519186.4943	4655397.871	1004	522442.5718	4647096.159
215	508127.0919	4646071.949	610	519186.296	4655390.866	1005	522445.0565	4647063.274
216	508148.4684	4646160.434	611	519186.938	4655383.87	1006	522441.9559	4647028.923
217	508163.4533	4646256.547	612	519189.5242	4655378.298	1007	522429.8506	4646986.063
218	508191.0824	4646349.307	613	519195.4386	4655375.566	1008	522416.3613	4646941.787
219	508195.8996	4646416.59	614	519203.0074	4655375.094	1009	522389.5681	4646897.355
220	508197.5646	4646513.948	615	519209.6933	4655378.254	1010	522370.4294	4646882.826
221	508195.1021	4646604.956	616	519213.3016	4655381.097	1011	522358.1035	4646858.872
222	508199.7231	4646689.043	617	519218.0629	4655381.153	1012	522343.8159	4646822.99
223	508194.5905	4646768.815	618	519221.1536	4655380.348	1013	522329.61	4646780.105
224	508193.994	4646819.929	619	519224.2673	4655377.584	1014	522319.4746	4646748.474
225	508191.3787	4646864.016	620	519226.8436	4655372.852	1015	522298.7626	4646723.021
226	508195.1467	4646901.175	621	519231.9833	4655364.508	1016	522265.0409	4646672.206
227	508190.1913	4647025.767	622	519235.947	4655360.913	1017	522227.2323	4646611.539
228	508191.393	4647102.812	623	519243.265	4655357.917	1018	522178.343	4646540.238
229	508165.3202	4647176.737	624	519246.6555	4655355.436	1019	522146.73	4646488.747
230	508133.1827	4647230.284	625	519250.3456	4655351.277	1020	522117.3238	4646428.179
231	508112.4361	4647267.857	626	519259.3769	4655345.5	1021	522106.5373	4646392.337
232	508102.9169	4647303.46	627	519272.6127	4655339.492	1022	522075.006	4646333.845
233	508101.1979	4647330.751	628	519281.6767	4655330.914	1023	522027.9721	4646283.574
234	508087.9571	4647385.218	629	519286.0089	4655319.76	1024	521966.9097	4646235.242
235	508090.1777	4647434.964	630	519289.7026	4655306.738	1025	521908.5827	4646192.543
236	508100.7596	4647488.309	631	519293.129	4655301.176	1026	521864.764	4646166.821

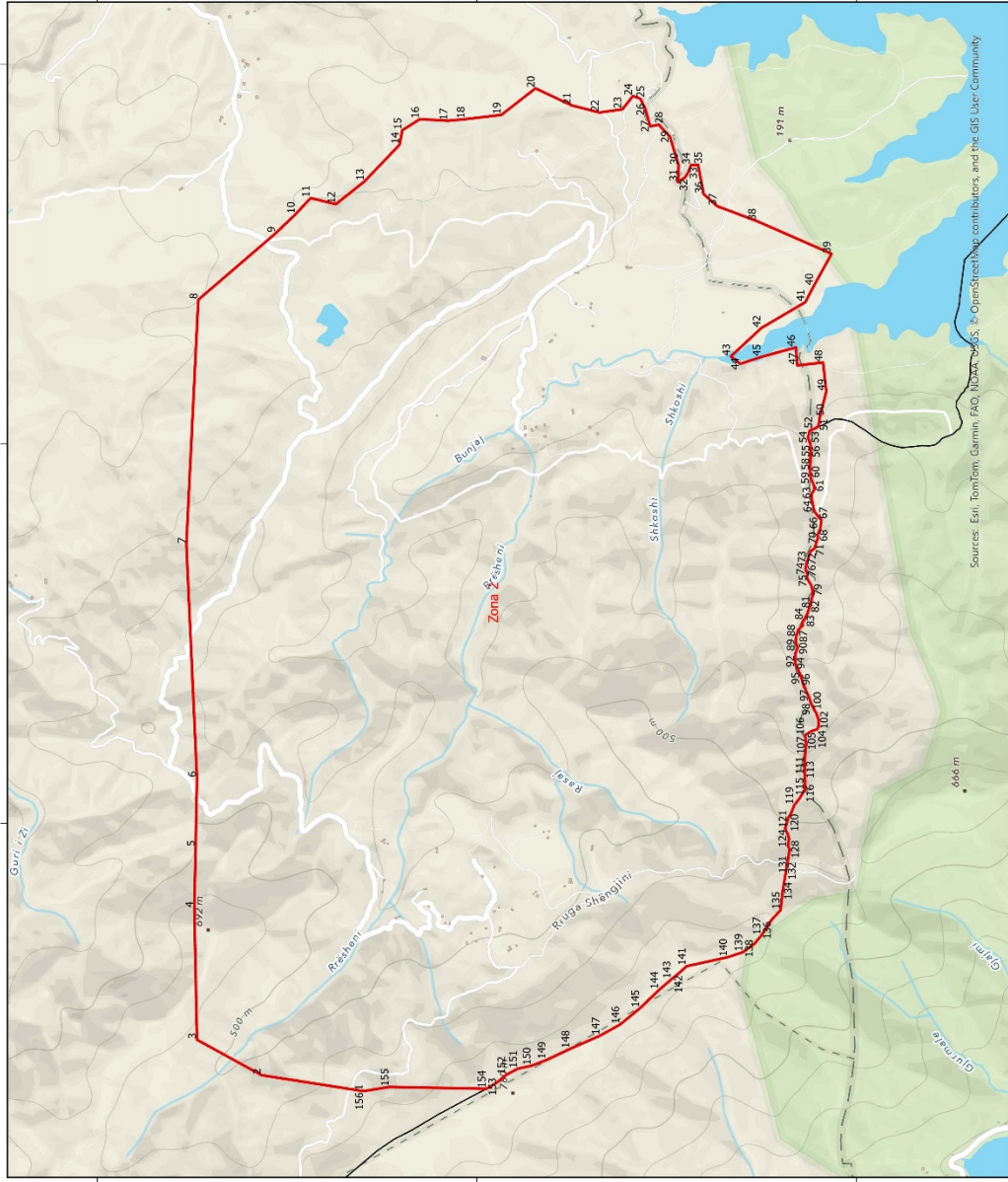
237	508172.0752	4647617.992	632	519299.9229	4655295.092	1027	521820.9697	4646138.998
238	508226.45	4647699.159	633	519308.684	4655288.472	1028	521778.535	4646114.693
239	508304.8573	4647821.223	634	519320.503	4655283.848	1029	521738.1438	4646095.314
240	508366.2176	4647903.872	635	519332.0485	4655278.661	1030	521699.7959	4646080.86
241	508420.7395	4647972.436	636	519344.4047	4655276.004	1031	521664.2816	4646063.639
242	508430.9317	4647999.165	637	519356.7414	4655275.028	1032	521645.4823	4646054.315
243	508429.9618	4648022.263	638	519364.8703	4655274.562	1033	521619.5094	4646059.615
244	508417.7399	4648049.432	639	519372.9533	4655278.018	1034	521587.1366	4646073.243
245	508399.1183	4648084.929	640	519379.1216	4655277.53	1035	521549.2194	4646081.904
246	508372.3451	4648158.846	641	519386.4266	4655275.655	1036	521526.8782	4646076.041
247	508319.0058	4648228.951	642	519391.7874	4655272.356	1037	521493.6279	4646044.84
248	508278.1145	4648312.508	643	519398.0114	4655267.106	1038	521465.1891	4646021.398
249	508238.9722	4648426.197	644	519402.2617	4655262.954	1039	521444.4771	4645995.946
250	508223.7534	4648470.137	645	519408.1696	4655260.782	1040	521417.6348	4645955.716
251	508197.8766	4648527.257	646	519414.3608	4655258.334	1041	521371.5954	4645880.247
252	508177.9771	4648552.235	647	519420.8616	4655253.368	1042	521309.9903	4645758.376
253	508154.634	4648572.271	648	519429.6226	4655246.747	1043	521258.0901	4645645.022
254	508127.5611	4648611.871	649	519440.0543	4655240.987	1044	521214.6164	4645572.585
255	508118.8156	4648641.181	650	519447.6623	4655237.154	1045	521197.4299	4645545.072
256	508098.4503	4648706.069	651	519456.4463	4655228.573	1046	521182.4665	4645507.082
257	508088.7512	4648757.076	652	519464.3442	4655223.903	1047	521175.0584	4645481.784
258	508085.5173	4648794.153	653	519473.9029	4655220.933	1048	521149.9251	4645397.43
259	508082.3078	4648829.13	654	519484.3248	4655216.013	1049	521105.6951	4645288.515
260	508080.5069	4648863.423	655	519495.5804	4655211.663	1050	521040.0532	4645168.577
261	508093.5734	4648883.883	656	519506.5395	4655208.71	1051	521009.8161	4645119.203
262	508119.2269	4648905.891	657	519516.665	4655205.186	1052	520978.007	4645084.517
263	508135.0205	4648932.686	658	519528.5135	4655198.042	1053	520908.4278	4645045.889
264	508143.1857	4648953.09	659	519539.489	4655193.688	1054	520843.6243	4645009.518
265	508172.9503	4648982.849	660	519549.3343	4655190.162	1055	520787.8694	4644986.458
266	508196.5604	4648999.931	661	519565.687	4655181.109	1056	520716.5958	4644973.021
267	508244.4318	4649038.305	662	519580.03	4655176.234	1057	520635.3609	4644964.47
268	508276.4032	4649058.987	663	519584.2672	4655173.202	1058	520586.5346	4644947.794
269	508303.5143	4649076.11	664	519588.2767	4655165.686	1059	520542.6996	4644923.473
270	508332.7422	4649091.857	665	519593.97	4655157.909	1060	520500.3384	4644892.866
271	508368.28	4649106.978	666	519602.3953	4655156.047	1061	520478.226	4644867.397
272	508426.2973	4649116.059	667	519611.9181	4655156.158	1062	520461.7805	4644836.392
273	508469.5535	4649129.869	668	519621.431	4655157.11	1063	520435.5586	4644785.865
274	508512.5971	4649161.884	669	519632.305	4655161.439	1064	520384.3503	4644673.22
275	508517.3186	4649177.346	670	519641.2152	4655166.025	1065	520362.8912	4644632.909
276	508524.7754	4649198.441	671	519646.1847	4655172.245	1066	520326.6681	4644564.863
277	508540.7325	4649211.233	672	519650.9035	4655175.942	1067	520305.4851	4644530.139
278	508555.3383	4649219.806	673	519656.2054	4655177.685	1068	520273.6025	4644501.756
279	508581.0327	4649238.314	674	519662.924	4655178.043	1069	520161.0337	4644420.094
280	508588.4159	4649265.711	675	519671.8833	4655178.428	1070	520016.7738	4644306.178
281	508593.0066	4649292.375	676	519679.986	4655180.204	1071	519939.811	4644240.153
282	508584.0893	4649336.389	677	519693.6871	4655182.325	1072	519898.8421	4644210.262
283	508572.4531	4649373.368	678	519703.3537	4655183.818	1073	519875.2557	4644191.079
284	508571.2168	4649397.695	679	519717.1006	4655182.018	1074	519840.5315	4644166.164

285	508594.3195	4649419.842	680	519740.9991	4655174.454	1075	519818.2557	4644154.699
286	508615.8781	4649432.698	681	519756.3773	4655176.875	1076	519793.2445	4644137.6
287	508642.3953	4649440.711	682	519766.1965	4655175.589	1077	519769.5928	4644124.019
288	508666.8037	4649449.399	683	519774.3745	4655170.922	1078	519734.1929	4644096.995
289	508687.6457	4649463.648	684	519798.807	4655165.605	1079	519700.1689	4644072.088
290	508706.2319	4649491.176	685	519809.1863	4655164.326	1080	519670.2971	4644051.43
291	508727.1856	4649555.847	686	519820.5583	4655173.983	1081	519636.224	4644030.724
292	508732.7279	4649569.62	687	519825.2804	4655177.4	1082	519619.4764	4644025.627
293	508795.0745	4649679.437	688	519833.3929	4655178.335	1083	519598.5112	4644021.881
294	508800.719	4649687.34	689	519842.1376	4655173.115	1084	519581.8207	4644011.882
295	508829.6186	4649751.203	690	519850.6644	4655162.57	1085	519558.218	4643994.1
296	508845.444	4649846.676	691	519859.4877	4655150.628	1086	519528.4524	4643964.34
297	508863.6091	4649923.119	692	519885.0289	4655126.655	1087	519481.9636	4643927.382
298	508886.0333	4649997.494	693	519899.4065	4655117.547	1088	519411.0658	4643881.736
299	508917.3468	4650035.975	694	519924.1795	4655127.994	1089	519374.9248	4643858.205
300	508950.8764	4650066.011	695	519964.7339	4655133.37	1090	519325.6434	4643820.514
301	508970.8376	4650068.386	696	520031.947	4655128.245	1091	519274.2369	4643784.9
302	509010.0846	4650073.055	697	520084.5994	4655123.566	1092	519218.67	4643745.736
303	509050.1637	4650086.228	698	520137.7738	4655127.689	1093	519158.1772	4643708.615
304	509071.0392	4650111.883	699	520186.6734	4655138.065	1094	519098.3846	4643671.502
305	509097.8185	4650132.46	700	520262.0579	4655159.254	1095	519080.3182	4643659.386
306	509129.8024	4650157.036	701	520326.964	4655178.22	1096	519056.7645	4643637.402
307	509149.3118	4650165.791	702	520390.4369	4655199.971	1097	519023.4897	4643608.302
308	509216.3369	4650181.34	703	520434.4023	4655213.09	1098	519007.6464	4643585.708
309	509247.8729	4650200.765	704	520478.3187	4655230.411	1099	518991.8358	4643560.313
310	509275.0013	4650234.962	705	520508.8903	4655251.077	1100	518983.5722	4643548.312
311	509321.3826	4650252.444	706	520546.4476	4655273.225	1101	518945.3144	4643526.156
312	509378.3995	4650265.815	707	520567.2572	4655290.275	1102	518902.1878	4643501.143
313	509452.6509	4650253.977	708	520610.9036	4655330.702	1103	518859.1918	4643464.926
314	509484.5824	4650239.527	709	520634.9159	4655339.086	1104	518834.9543	4643441.534
315	509579.7835	4650246.992	710	520652.4864	4655333.689	1105	518828.2055	4643419.746
316	509660.5547	4650273.061	711	520690.4937	4655317.326	1106	518825.0474	4643390.297
317	509708.7319	4650318.092	712	520713.5639	4655292.472	1107	518819.2519	4643346.811
318	509740.2184	4650341.752	713	520724.6272	4655272.906	1108	518795.4309	4643287.708
319	509784.5567	4650352.857	714	520745.424	4655231.131	1109	518770.1359	4643234.891
320	509829.2163	4650336.439	715	520758.4205	4655197.669	1110	518737.7083	4643193.196
321	509933.4303	4650297.423	716	520783.0375	4655128.627	1111	518670.6055	4643122.384
322	509990.8676	4650274.801	717	520811.18	4655057.525	1112	518652.0022	4643096.256
323	510027.109	4650277.037	718	520852.1144	4654970.466	1113	518603.7639	4643029.165
324	510033.1875	4650277.412	719	520892.2177	4654894.603	1114	518556.1606	4642967.684
325	510071.1988	4650286.326	720	520920.0902	4654846.608	1115	518527.1278	4642935.132
326	510091.412	4650316.491	721	520928.1197	4654818.69	1116	518450.7835	4642876.117
327	510121.0235	4650371.609	722	520947.6471	4654765.695	1117	518413.4627	4642833.664
328	510204.7239	4650457.287	723	520954.2926	4654736.36	1118	518386.7755	4642780.131
329	510288.3552	4650496.663	724	520960.1315	4654716.12	1119	518351.2796	4642701.284
330	510356.9009	4650530.291	725	520970.1225	4654700.129	1120	518312.8523	4642633.608
331	510476.0225	4650564.497	726	520983.7373	4654673.677	1121	518261.732	4642574.161
332	510604.8685	4650691.271	727	520995.2433	4654647.901	1122	518207.5526	4642533.602

333	510651.4813	4650723.566	728	521006.9129	4654608.12	1123	518141.5102	4642504.671
334	510676.4775	4650758.147	729	521022.9065	4654557.885	1124	518026.7655	4642476.307
335	510704.0429	4650790.219	730	521045.1937	4654508.425	1125	517957.6581	4642457.293
336	510724.1525	4650808.234	731	521075.526	4654469.102	1126	517857.0254	4642439.313
337	510760.7995	4650823.902	732	521091.456	4654448.279	1127	517794.1055	4642430.176
338	510841.6977	4650856.597	733	521101.9564	4654436.637	1128	517720.8051	4642410.413
339	510887.1593	4650878.718	734	521122.6609	4654414.749	1129	517681.0407	4642397.344
340	510930.1555	4650894.46	735	521149.306	4654387.889	1130	517551.2108	4642352.531
341	510966.547	4650899.288	736	521177.6414	4654360.208	1131	517446.3701	4642343.486
342	511031.4303	4650922.313	737	521197.2681	4654334.667	1132	517298.9955	4642353.173
343	511109.6109	4650970.215	738	521218.559	4654310.545	1133	517262.6097	4642350.647
344	511156.1496	4651008.859	739	521240.1748	4654289.428	1134	517234.5528	4642354.522
345	511196.3244	4651048.698	740	521254.8471	4654280.356	1135	517175.5729	4642367.84
346	511226.4443	4651079.53	741	521273.9679	4654274.137	1136	517123.1766	4642387.177
347	511264.3637	4651139.994	742	521295.3097	4654269.624	1137	517105.2918	4642389.43
348	511278.5759	4651183.009	743	521314.1144	4654266.482	1138	517073.8482	4642383.461
349	511340.2636	4651229.449	744	521357.3353	4654259.424	1139	517045.8567	4642381.734
350	511404.5417	4651255.315	745	521386.259	4654253.319	1140	517045.1288	4642375.523
351	511448.935	4651276.438	746	521417.9606	4654249.208	1141	517044.2672	4642329.294
352	511480.3989	4651300.936	747	521433.9514	4654247.154	1142	517039.2372	4642280.215
353	511543.653	4651321.995	748	521456.1073	4654244.891	1143	517019.2599	4642191.745
354	511590.5032	4651333.972	749	521489.555	4654240.255	1144	516999.348	4642097.673
355	511627.076	4651355.989	750	521541.249	4654205.049	1145	516983.1801	4642042.862
356	511665.9218	4651400.893	751	521556.8041	4654192.345	1146	516961.3943	4641989.386
357	511718.8986	4651431.992	752	521594.3658	4654166.172	1147	516929.8056	4641935.795
358	511742.7584	4651455.13	753	521656.9301	4654133.849	1148	516898.5436	4641854.197
359	511761.5241	4651479.48	754	521686.2582	4654117.105	1149	516894.7996	4641814.937
360	511795.3793	4651516.705	755	521707.2907	4654099.058	1150	516903.093	4641755.286
361	511843.4103	4651536.316	756	521730.1814	4654073.919	1151	516938.0204	4641669.568
362	511891.4562	4651554.657	757	521754.0096	4654039.843	1152	516989.8217	4641593.351
363	511940.9265	4651549.901	758	521767.2648	4654003.447	1153	517068.8316	4641543.852
364	511985.4681	4651551.945	759	521777.4551	4653951.179	1154	517125.2555	4641509.495
365	512013.3303	4651558.621	760	521778.6135	4653911.976	1155	517191.3843	4641483.655
366	512063.9391	4651574.993	761	521782.5481	4653874.906	1156	517236.4909	4641458.97
367	512088.0659	4651575.275	762	521784.2921	4653845.513	1157	517282.8509	4641446.905
368	512146.2313	4651574.526	763	521785.3032	4653818.914	1158	517334.7798	4641437.706
369	512196.2302	4651556.947	764	521785.5977	4653793.706	1159	517399.7012	4641439.375
370	512246.0206	4651534.668	765	521786.6088	4653767.107	1160	517445.9259	4641412.434
371	512287.9695	4651531.348	766	521783.4186	4653740.458	1161	517498.8754	4641363.751
372	512369.1793	4651537.377	767	521778.1003	4653707.582	1162	517526.2544	4641329.935
373	512450.4485	4651538.326	768	521782.1635	4653671.494	1163	517557.4436	4641231.173
374	512478.266	4651548.811	769	521799.6641	4653636.123	1164	517581.7396	4641125.375
375	512586.6559	4651619.927	770	521819.1023	4653602.736	1165	517578.3248	4641073.005
376	512601.0299	4651669.731	771	521833.0325	4653585.251	1166	517554.8198	4640944.464
377	512636.2182	4651725.916	772	521841.2595	4653576.384	1167	517523.5902	4640860.065
378	512730.9661	4651768.933	773	521856.397	4653575.44	1168	517502.0817	4640782.782
379	512807.5801	4651782.189	774	521863.3206	4653582.244	1169	517487.1802	4640730.886
380	512848.8786	4651797.027	775	521870.5569	4653586.25	1170	517480.521	4640701.396

381	512901.3403	4651861.093	776	521885.1113	4653587.26	1171	517468.0253	4640631.922
382	512960.8444	4651877.028	777	521905.8897	4653583.021	1172	517462.9053	4640590.545
383	513029.6825	4651864.508	778	521919.6366	4653581.221	1173	517461.5469	4640526.26
384	513111.0069	4651897.203	779	521942.0792	4653578.402	1174	517467.402	4640505.161
385	513161.8902	4651908.355	780	521958.6334	4653576.074	1175	517506.4598	4640458.697
386	513197.9019	4651931.141	781	521968.7524	4653573.111	1176	517554.8976	4640388.532
387	513241.9612	4651947.622	782	521975.8035	4653568.991	1177	517613.8547	4640317.089
388	513256.9767	4651966.848	783	521980.8875	4653565.409	1178	517663.4807	4640265.145
389	513274.0916	4652002.047	784	521985.3983	4653562.941	1179	517686.1564	4640242.3
390	513267.7674	4652021.584	785	521990.1662	4653562.437	1180	517717.2998	4640213.951
391	513277.5553	4652053.448	786	521996.328	4653562.508	1181	517745.5526	4640193.271
392	513298.7271	4652089.256	787	522006.6976	4653562.069	1182	517809.6978	4640169.455
393	513312.4432	4652111.006	788	522018.7738	4653559.409	1183	517470.2125	4640116.995
394	513323.3376	4652156.854	789	522034.5468	4653552.03	1184	517053.6739	4640052.629
395	513330.571	4652189.958	790	522063.6112	4653533.882	1185	516290.5625	4640035.919

ZONA ME PËRPARËSI ZHVILLIMIN E EKONOMISË MALORE
ZONA 2 , NJËSIA ADMINISTRATIVE KTHELLË DHE RRËSHEN, BASHKIA MIRDITË , QARKU LEZHË

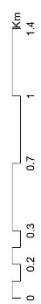


BASHKIA MIRDITË

Njësia Administrative	Zona	Sipërfaqe (ha)
Fan	Zona 1	17088
Kthellë dhe rrëshen	Zona 2	1470
Oros dhe Fan	Zona 3	9078
Rrëshen, Kthellë dhe Selltë	Zona 4	19731
Rrëshen dhe Orosh	Zona 5	1565
Kaçinar, Orosh dhe Rrëshen	Zona 6	10599
Rubik	Zona 7	12563



1:20.000



- Legjendë**
- Zona me përparësi zhvillimin e ekonomisë malore
 - Bashkia Mirditë
 - Ndërrtasa
 - Izolipe
 - Kategoritë e Rrjetit Rrugor
 - Kategoritë C, Rruge Interurbane Dytësore
 - Kategoritë F, Rruge Lokale

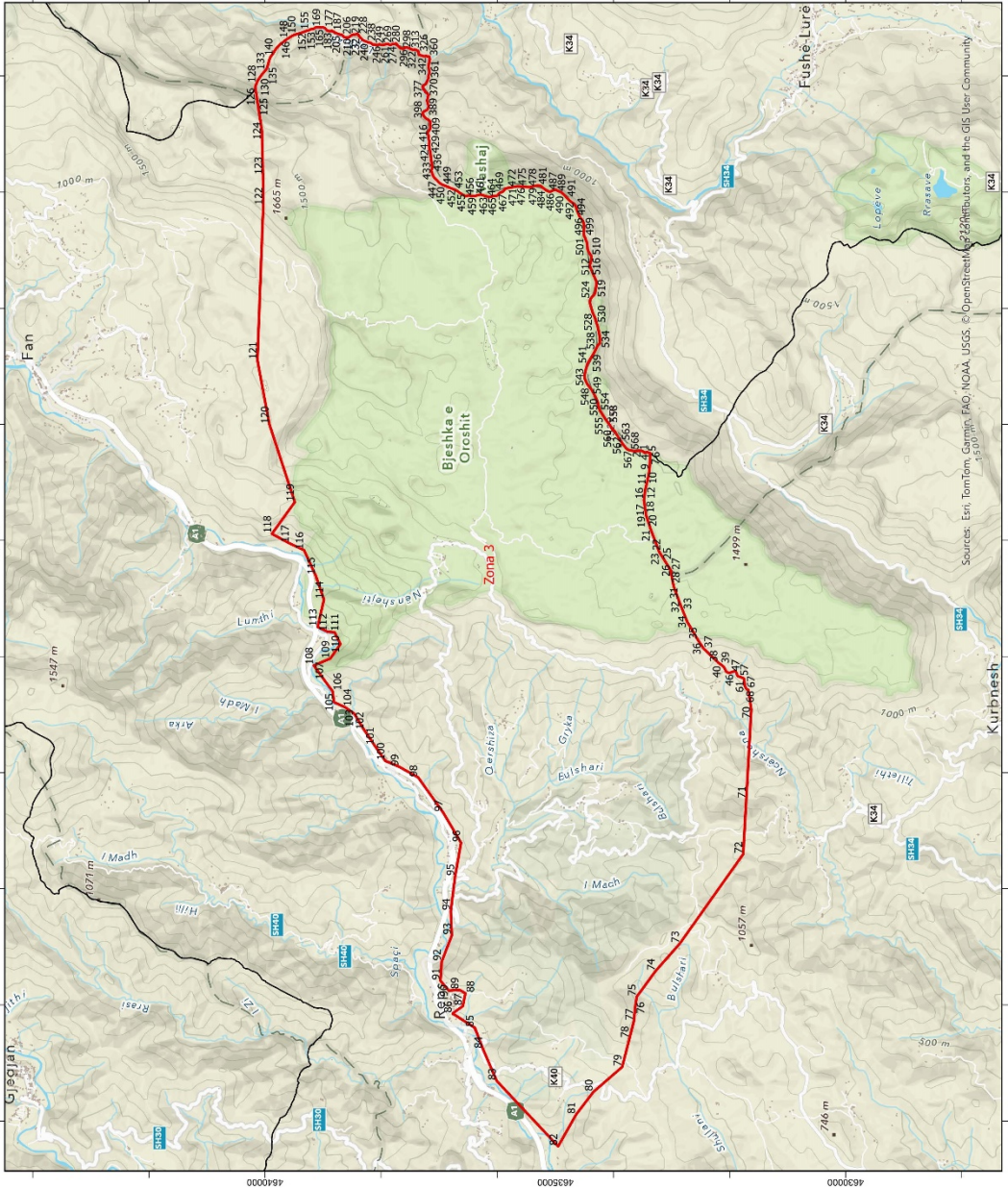
*Zona 2 në territorin e Njësise Administrative Kthellë dhe Rrëshen, me sipërfaqe prej 1470 ha
 **Sistemi Koordinativ: KRGJSH (Komiza Referuese Gjendëzake Shqiptare) / EPSG 6870

Sources: Esri, TomTom, Garmin, FAO, IGN, CNIG, © OpenStreetMap contributors, and the GIS User Community

Zona 2								
Njësia Administrative Kthellë dhe Rrëshen								
Nr.	Koordinata X	Koordinata Y	Nr.	Koordinata X	Koordinata Y	Nr.	Koordinata X	Koordinata Y
1	486588.2712	4620597.317	53	490068.0422	4618247.513	105	488486.0457	4618235.492
2	486672.2712	4621133.517	54	490031.7463	4618256.135	106	488463.7684	4618272.111
3	486858.9645	4621474.176	55	489996.1944	4618243.412	107	488432.9812	4618267.285
4	487551.9645	4621488.176	56	489958.032	4618243.06	108	488421.1427	4618265.429
5	487873.9645	4621481.176	57	489914.6236	4618244.673	109	488386.175	4618269.256
6	488237.9645	4621474.176	58	489858.5297	4618245.08	110	488340.6258	4618272.96
7	489469.9645	4621530.176	59	489835.2505	4618244.81	111	488304.6244	4618274.659
8	490757.9645	4621467.176	60	489814.1368	4618240.331	112	488279.229	4618274.364
9	491108.8841	4621058.808	61	489778.618	4618224.713	113	488259.1245	4618274.13
10	491208.2841	4620955.208	62	489757.3335	4618223.283	114	488214.7071	4618271.498
11	491293.6841	4620875.408	63	489735.8587	4618237.306	115	488177.6354	4618274.242
12	491261.4841	4620742.408	64	489706.2307	4618236.962	116	488169.1702	4618274.144
13	491381.8841	4620591.208	65	489645.0059	4618223.551	117	488166.9925	4618279.41
14	491575.0841	4620406.408	66	489617.7153	4618204.185	118	488128.9774	4618301.979
15	491650.6841	4620392.408	67	489597.665	4618186.69	119	488094.4492	4618329.365
16	491709.4841	4620300.008	68	489554.0013	4618190.775	120	488056.1841	4618343.737
17	491701.0841	4620151.608	69	489521.7441	4618204.443	121	488023.472	4618362.475
18	491709.4841	4620059.208	70	489493.8635	4618206.98	122	488000.3153	4618367.987
19	491731.8841	4619871.608	71	489448.3628	4618221.919	123	487971.5497	4618376.984
20	491871.8841	4619692.408	72	489430.9907	4618244.348	124	487943.7756	4618363.597
21	491782.2841	4619502.008	73	489367.2687	4618263.716	125	487918.4663	4618355.895
22	491744.4841	4619355.008	74	489338.6251	4618269.733	126	487899.3829	4618358.849
23	491761.2841	4619234.608	75	489313.0585	4618258.883	127	487879.2414	4618361.79
24	491831.2841	4619178.608	76	489295.8116	4618263.595	128	487862.7567	4618352.776
25	491817.2841	4619139.408	77	489272.1711	4618250.97	129	487846.3207	4618355.529
26	491761.2841	4619112.808	78	489255.3636	4618240.192	130	487823.3524	4618359.377
27	491671.7931	4619088.08	79	489230.0542	4618232.491	131	487802.0699	4618362.943
28	491680.0841	4619042.808	80	489196.1814	4618233.156	132	487760.058	4618369.981
29	491617.0841	4618984.008	81	489165.397	4618241.264	133	487721.5123	4618376.438
30	491465.8841	4618937.808	82	489142.0441	4618247.343	134	487643.292	4618389.542
31	491378.2158	4618941.782	83	489103.8036	4618259.598	135	487542.2061	4618400.556
32	491401.5111	4618904.966	84	489069.7218	4618278.252	136	487488.7078	4618450.089
33	491426.7111	4618888.866	85	489051.6106	4618288.624	137	487410.4654	4618500.231
34	491467.3111	4618872.766	86	489043.2069	4618283.235	138	487363.4213	4618539.916
35	491469.4111	4618835.666	87	489020.7156	4618306.256	139	487320.3902	4618598.704
36	491314.0958	4618805.562	88	488980.4489	4618320.332	140	487294.0504	4618678.86
37	491251.0958	4618734.862	89	488954.2259	4618321.035	141	487246.6097	4618895.462
38	491172.6958	4618526.262	90	488926.4795	4618310.453	142	487206.3163	4618940.401
39	490999.9764	4618132.005	91	488893.6488	4618322.661	143	487177.3171	4618976.06
40	490830.5764	4618225.805	92	488869.0927	4618323.32	144	487121.4916	4619041.119
41	490745.1764	4618270.605	93	488841.7234	4618324.055	145	487025.0405	4619141.635
42	490609.3764	4618501.605	94	488805.6165	4618307.503	146	486939.1257	4619246.508
43	490459.5764	4618662.605	95	488779.3429	4618295.458	147	486880.7338	4619351.701
44	490420.3764	4618613.605	96	488720.0072	4618277.874	148	486811.1414	4619509.699
45	490456.7764	4618501.605	97	488665.7698	4618251.337	149	486752.528	4619633.946
46	490507.1764	4618319.605	98	488636.2402	4618242.528	150	486721.9537	4619714.052
47	490411.9764	4618312.605	99	488612.0381	4618230.606	151	486706.2977	4619785.863

48	490427.3764	4618176.805	100	488593.1022	4618220.861	152	486673.8277	4619846.891
49	490274.7764	4618160.005	101	488579.4446	4618212.236	153	486635.1783	4619893.025
50	490141.1504	4618193.978	102	488543.603	4618200.179	154	486600.6402	4619949.794
51	490089.7457	4618201.2	103	488511.8588	4618199.811	155	486610.3477	4620460.653
52	490075.658	4618229.61	104	488493.7598	4618209.125	156	486588.2712	4620597.317

ZONA ME PËRPARËSI ZHVILLIMIN E EKONOMISË MALORE
ZONA 3, NJËSIA ADMINISTRATIVE OROSH DHE FAN, BASHKIA MIRDITË, QARKU LEZHË



BASHKIA MIRDITË

Njësia Administrative	Zona	Sipërfaqe (ha)
Fan	Zona 1	17088
Kthellë dhe Rrëshen	Zona 2	1470
Orosh dhe Fan	Zona 3	9078
Rrëshen, Kithellë dhe Selltë	Zona 4	19731
Rrëshen dhe Orosh	Zona 5	1565
Kaçnar, Orosh dhe Rrëshen	Zona 6	10599
Rubik	Zona 7	12563



1:65,000



- Legjenda**
- Zona me përparësi zhvillimin e ekonomisë malore
 - Bashkia Mirditë
 - Ndërtësa
 - Izolise
 - Kategoritë e Rrjetit Rrugor
 - B. Rruge Interurbane Kryesore
 - Kategoritë C. Rruge Interurbane Dytësore
 - E. Rruge Urbane Dytësore
 - Kategoritë F. Rruge Lokale

*Zona 3 në territorin e Njësise Administrative Orosh dhe Fan, me sipërfaqe prej 9078 ha
 **Shtetimi Koordinativ: KSGJSH (Komiza Referencë Gjeodetike Shqiptare) EPSG: 6870

Sources: Esri, TomTom, Garmin, FAO, NOAA, USGS, © OpenStreetMap contributors, and the GIS User Community

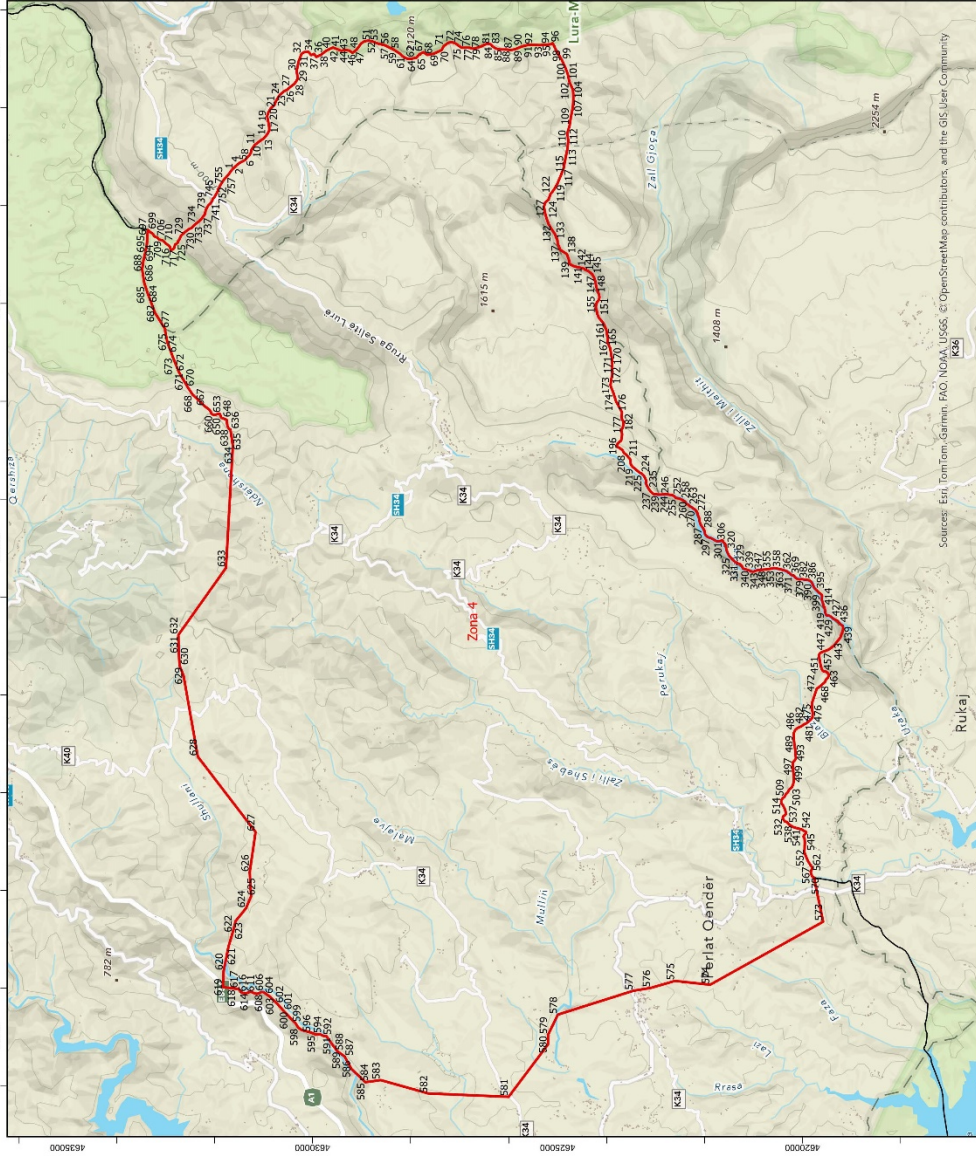
Zona 3								
Njësia Administrative Orosh dhe Fan								
Nr.	Koordinata X	Koordinata Y	Nr.	Koordinata X	Koordinata Y	Nr.	Koordinata X	Koordinata Y
1	511544.8368	4633569.585	192	518764.4295	4638826.837	382	517710.991	4637218.378
2	511545.3789	4633523.024	193	518763.8549	4638816.045	383	517693.4276	4637199.758
3	511531.9919	4633491.119	194	518761.9629	4638810.141	384	517674.5501	4637184.933
4	511507.4238	4633462.419	195	518757.5338	4638805.607	385	517654.1808	4637189.141
5	511520.2228	4633419.223	196	518753.6519	4638802.201	386	517639.4814	4637197.224
6	511499.6945	4633363.937	197	518748.3385	4638801.438	387	517613.4201	4637199.461
7	511412.5503	4633370.175	198	518744.1798	4638797.748	388	517575.8635	4637207.278
8	511388.9811	4633371.862	199	518742.7046	4638792.129	389	517521.3859	4637195.849
9	511205.351	4633382.649	200	518742.9409	4638783.868	390	517499.2672	4637186.701
10	511026.6116	4633416.753	201	518738.994	4638774.018	391	517477.7094	4637183.91
11	510943.4791	4633437.274	202	518734.7768	4638763.324	392	517457.9825	4637187.49
12	510926.8843	4633441.371	203	518728.1795	4638749.972	393	517434.4016	4637194.835
13	510925.429	4633441.731	204	518720.3118	4638728.031	394	517416.4685	4637207.962
14	510886.6428	4633451.308	205	518710.0506	4638695.138	395	517408.6497	4637225.016
15	510745.8818	4633470.558	206	518706.3645	4638674.926	396	517400.8531	4637240.165
16	510695.0803	4633477.509	207	518699.5191	4638661.401	397	517389.8005	4637262.261
17	510644.6051	4633470.049	208	518688.137	4638652.584	398	517372.4727	4637277.935
18	510577.3293	4633460.106	209	518676.4487	4638646.006	399	517352.0961	4637282.778
19	510429.3199	4633438.231	210	518670.1048	4638637.528	400	517332.4578	4637278.739
20	510366.4839	4633417.661	211	518664.9432	4638623.742	401	517316.0608	4637269.023
21	510200.1606	4633363.193	212	518664.556	4638608.891	402	517301.5982	4637256.789
22	509803.8688	4633213.841	213	518661.9967	4638588.133	403	517284.6032	4637243.891
23	509794.3841	4633207.899	214	518659.1541	4638567.651	404	517263.7021	4637218.749
24	509708.9424	4633154.393	215	518661.21	4638561.212	405	517250.9019	4637193.333
25	509652.4811	4633119.032	216	518677.9697	4638541.239	406	517235.8413	4637177.917
26	509479.7788	4633011.859	217	518694.1823	4638520.139	407	517223.9775	4637160.634
27	509479.7168	4633011.727	218	518705.8907	4638500.947	408	517213.2799	4637152.254
28	509479.3902	4633011.524	219	518709.9457	4638489.51	409	517197.4365	4637149.529
29	509419.9504	4633006.01	220	518712.3266	4638477.492	410	517174.5423	4637152.437
30	509209.7025	4632964.197	221	518713.584	4638465.742	411	517147.1889	4637156.564
31	508978.2568	4632879.37	222	518714.011	4638453.142	412	517124.3613	4637153.758
32	508903.0075	4632851.783	223	518714.9622	4638443.629	413	517099.6438	4637149.66
33	508795.8431	4632808.939	224	518718.1834	4638431.621	414	517085.5646	4637159.021
34	508598.7411	4632730.134	225	518723.0426	4638423.274	415	517068.3107	4637168.345
35	508288.2338	4632548.208	226	518723.1275	4638415.992	416	517042.0496	4637187.724
36	508183.4584	4632478.901	227	518720.7341	4638405.04	417	517019.6868	4637199.529
37	508139.5191	4632449.838	228	518713.2927	4638394.589	418	517001.9238	4637198.052
38	507892.5794	4632194.673	229	518703.8678	4638386.075	419	516962.1679	4637176.634
39	507862.4776	4632151.675	230	518696.0648	4638382.623	420	516943.7182	4637179.594
40	507860.6867	4632149.114	231	518684.8975	4638379.412	421	516919.6788	4637182.313
41	507821.3831	4632100.817	232	518666.8946	4638361.835	422	516899.7299	4637176.149
42	507781.2421	4632078.031	233	518641.4275	4638335.767	423	516870.3241	4637169.374
43	507754.7865	4632068.149	234	518618.1847	4638311.126	424	516844.6864	4637174.151
44	507739.0031	4632054.15	235	518609.8998	4638300.945	425	516816.191	4637173.231
45	507721.774	4632026.839	236	518600.9248	4638277.871	426	516776.7835	4637171.959
46	507717.7766	4632004.993	237	518595.2356	4638261.277	427	516730.1034	4637163.824
47	507727.6916	4631974.817	238	518588.4197	4638245.231	428	516699.5251	4637155.159

48	507737.6168	4631944.63	239	518582.1377	4638231.432	429	516658.3218	4637148.964
49	507745.3186	4631922.391	240	518577.2725	4638216.249	430	516622.8032	4637145.375
50	507746.5122	4631916.102	241	518574.6838	4638198.012	431	516590.4814	4637139.918
51	507748.1425	4631907.538	242	518569.8382	4638181.148	432	516553.7004	4637135.68
52	507746.1518	4631896.36	243	518558.5736	4638162.249	433	516528.3331	4637132.844
53	507732.9427	4631889.824	244	518547.4748	4638153.156	434	516502.9807	4637128.739
54	507701.1926	4631876.699	245	518540.6001	4638142.151	435	516480.8717	4637128.5
55	507675.2486	4631868.424	246	518540.1346	4638134.022	436	516462.6163	4637120.457
56	507660.4947	4631857.088	247	518540.506	4638126.183	437	516443.4091	4637118.519
57	507653.3001	4631835.736	248	518543.6979	4638116.696	438	516419.9466	4637115.706
58	507637.8507	4631793.039	249	518542.4149	4638106.597	439	516401.3116	4637123.119
59	507624.3959	4631762.05	250	518538.0185	4638099.263	440	516398.1223	4637120.993
60	507616.5599	4631750.264	251	518533.8859	4638093.332	441	516375.236	4637138.046
61	507598.5099	4631747.923	252	518533.4105	4638086.044	442	516361.0757	4637136.187
62	507563.4492	4631745.925	253	518533.7853	4638077.925	443	516337.9556	4637122.159
63	507537.9673	4631743.497	254	518535.0851	4638062.533	444	516307.3541	4637114.394
64	507511.4274	4631740.007	255	518536.8765	4638053.03	445	516270.5019	4637098.09
65	507494.4539	4631737.148	256	518542.3547	4638039.648	446	516248.4647	4637081.958
66	507478.0501	4631730.045	257	518544.6867	4638031.832	447	516202.4339	4637035.913
67	507448.4591	4631715.355	258	518544.498	4638023.987	448	516166.825	4637003.748
68	507432.7129	4631698.155	259	518541.5607	4638011.627	449	516128.3126	4636948.265
69	507424.8901	4631676.895	260	518538.6169	4637999.828	450	516106.7561	4636890.864
70	507087.3577	4631626.684	261	518534.81	4637989.979	451	516083.0584	4636835.554
71	505548.7535	4631713.122	262	518533.2665	4637978.197	452	516064.4917	4636794.062
72	504595.3577	4631766.684	263	518533.3579	4637970.354	453	516050.1945	4636749.445
73	503055.3577	4632858.684	264	518537.9306	4637962.564	454	516013.9835	4636678.114
74	502579.3577	4633278.684	265	518540.8162	4637955.315	455	515987.8859	4636647.118
75	502139.7577	4633600.334	266	518541.5363	4637941.598	456	515928.7272	4636546.945
76	501950.7577	4633628.334	267	518543.9335	4637928.18	457	515937.5504	4636516.356
77	501719.7577	4633649.334	268	518544.8815	4637918.947	458	515941.1071	4636483.588
78	501418.7577	4633726.334	269	518548.6889	4637904.705	459	515932.1009	4636439.033
79	500928.7577	4633852.334	270	518552.4638	4637893.264	460	515933.4108	4636386.471
80	500500.6377	4634346.884	271	518551.7671	4637880.931	461	515949.2189	4636332.34
81	500108.6377	4634646.484	272	518545.2182	4637866.008	462	515958.9906	4636292.09
82	499562.6377	4634954.484	273	518538.3336	4637855.844	463	515938.0279	4636229.408
83	500690.4833	4636013.665	274	518533.9339	4637848.79	464	515913.4287	4636134.013
84	501235.7833	4636248.865	275	518533.5076	4637837.3	465	515932.4376	4636068.181
85	501608.1833	4636391.665	276	518536.3867	4637830.611	466	515937.815	4636008.354
86	501851.0608	4636768.458	277	518542.0992	4637821.153	467	515986.2338	4635961.607
87	501977.0608	4636592.058	278	518548.4209	4637807.501	468	516009.2242	4635905.256
88	502199.6608	4636547.258	279	518551.3326	4637798.011	469	516032.5672	4635887.024
89	502257.0608	4636649.458	280	518554.5245	4637788.524	470	516056.4595	4635868.362
90	502244.4608	4636831.458	281	518552.981	4637776.741	471	516071.5249	4635826.818
91	502413.8608	4636977.058	282	518552.2779	4637764.968	472	516074.3877	4635777.779
92	502745.4297	4636955.62	283	518554.3494	4637755.468	473	516086.422	4635734.858
93	503194.1297	4636782.72	284	518560.8695	4637748.822	474	516093.5234	4635709.53
94	503617.4197	4636798.26	285	518560.3648	4637744.054	475	516099.2294	4635659.61
95	504211.0197	4636725.46	286	518555.3789	4637739.233	476	516097.4692	4635609.095
96	504790.6197	4636621.86	287	518544.2899	4637729.3	477	516088.3822	4635504.233
97	505312.8197	4636931.26	288	518533.4777	4637719.65	478	516084.8436	4635440.677

98	505916.2197	4637361.06	289	518524.587	4637713.384	479	516099.0388	4635385.313
99	506100.1797	4637686.42	290	518517.9075	4637709.665	480	516106.6267	4635357.322
100	506201.6654	4637927.763	291	518513.2016	4637704.848	481	516113.629	4635301.311
101	506466.9654	4638111.163	292	518507.7142	4637694.98	482	516107.8098	4635255.735
102	506730.1654	4638288.263	293	518501.621	4637689.026	483	516079.1446	4635226.083
103	507015.0654	4638461.863	294	518494.6875	4637683.063	484	516045.2051	4635178.805
104	507123.4254	4638614.743	295	518485.2561	4637675.11	485	516025.432	4635149.999
105	507211.6254	4638808.783	296	518478.3847	4637663.825	486	516002.1839	4635095.352
106	507404.2654	4638837.903	297	518474.6104	4637651.176	487	516021.1515	4635063.165
107	507593.5616	4638978.451	298	518471.9858	4637636.019	488	516043.7066	4635009.07
108	507845.5616	4639159.051	299	518468.5145	4637621.412	489	515994.3139	4634897.189
109	507965.9616	4638874.851	300	518469.4363	4637614.42	490	515948.5086	4634848.534
110	508215.1616	4638699.851	301	518471.4784	4637607.441	491	515903.4125	4634805.963
111	508418.1616	4638800.651	302	518474.3445	4637601.872	492	515849.0641	4634754.242
112	508425.1616	4638918.951	303	518481.3726	4637599.713	493	515803.2426	4634690.208
113	508509.1616	4639093.251	304	518485.0267	4637598.635	494	515750.8009	4634649.38
114	508979.98	4638985.375	305	518487.0198	4637595.857	495	515675.5403	4634628.025
115	509396.9234	4639126.835	306	518489.9414	4637585.527	496	515580.3719	4634586.956
116	509832.7883	4639328.004	307	518489.502	4637575.157	497	515504.5378	4634530.094
117	509950.1365	4639579.464	308	518489.6782	4637560.033	498	515431.7808	4634507.022
118	510113.3616	4639881.741	309	518489.8217	4637547.709	499	515374.9026	4634507.744
119	510660.2012	4639486.756	310	518486.575	4637537.868	500	515278.2956	4634514.829
120	511994.4012	4639923.556	311	518478.6028	4637524.889	501	515225.4499	4634499.171
121	513106.0012	4640131.456	312	518474.047	4637507.189	502	515211.3235	4634487.117
122	515766.8053	4640029.95	313	518468.8919	4637492.843	503	515160.0079	4634472.478
123	516290.5625	4640035.919	314	518462.2679	4637484.362	504	515140.8238	4634461.126
124	517053.6739	4640052.629	315	518459.5617	4637476.207	505	515080.4647	4634452.6
125	517470.2125	4640116.995	316	518454.4751	4637455.979	506	515047.9625	4634447.771
126	517809.6978	4640169.455	317	518451.8277	4637442.783	507	515016.5467	4634447.405
127	517827.8431	4640162.717	318	518452.7821	4637432.99	508	514979.7492	4634433.851
128	517872.1433	4640147.127	319	518455.3975	4637424.897	509	514940.7059	4634413.758
129	517922.8188	4640125.308	320	518454.6388	4637417.885	510	514903.5936	4634385.242
130	517972.2245	4640092.27	321	518451.4018	4637407.203	511	514844.57	4634378.548
131	518028.0299	4640050.903	322	518444.5989	4637390.036	512	514777.5195	4634399.079
132	518069.7415	4640017.075	323	518442.4659	4637380.768	513	514734.3893	4634411.356
133	518094.5015	4639995.654	324	518435.8745	4637369.486	514	514698.464	4634396.892
134	518115.6397	4639975.972	325	518425.3522	4637358.999	515	514631.1109	4634371.482
135	518161.2378	4639957.175	326	518410.2083	4637351.92	516	514547.723	4634334.292
136	518192.7177	4639948.018	327	518400.8224	4637352.091	517	514471.5755	4634300.332
137	518207.7937	4639945.473	328	518390.7134	4637354.214	518	514417.1694	4634296.239
138	518251.3595	4639932.815	329	518384.9571	4637355.407	519	514356.7535	4634304.003
139	518281.4325	4639924.202	330	518378.6602	4637354.914	520	514329.1912	4634307.915
140	518329.838	4639904.878	331	518371.6941	4637351.751	521	514263.4474	4634318.791
141	518389.9773	4639859.198	332	518365.8809	4637345.801	522	514228.3052	4634337.432
142	518434.6107	4639835.469	333	518362.0528	4637337.773	523	514197.9979	4634369.596
143	518467.1055	4639811.337	334	518357.7183	4637325.117	524	514153.1725	4634400.999
144	518499.6248	4639785.105	335	518355.3167	4637314.865	525	514117.4062	4634408.852
145	518544.9762	4639739.415	336	518354.8773	4637304.496	526	514067.5848	4634401.81
146	518616.5779	4639645.193	337	518353.4429	4637295.375	527	514009.8208	4634385.327
147	518626.8064	4639633.064	338	518351.686	4637289.892	528	513924.7964	4634360.079

148	518651.0292	4639596.21	339	518348.3707	4637285.932	529	513808.4602	4634310.318
149	518695.9152	4639526.128	340	518345.0636	4637281.272	530	513735.6542	4634291.479
150	518719.0434	4639461.57	341	518342.9127	4637273.543	531	513708.2643	4634280.576
151	518744.6222	4639371.866	342	518340.1723	4637268.329	532	513622.7723	4634260.531
152	518760.5227	4639329.473	343	518339.6774	4637262.721	533	513520.3616	4634239.23
153	518776.5046	4639289.332	344	518340.8613	4637257.272	534	513465.4094	4634232.24
154	518782.8919	4639260.825	345	518339.5213	4637252.075	535	513395.5069	4634236.718
155	518789.8618	4639239.617	346	518338.7708	4637244.363	536	513359.4096	4634272.984
156	518792.2572	4639229.801	347	518339.6795	4637238.491	537	513311.7864	4634297.292
157	518798.5028	4639224.391	348	518341.3845	4637236.41	538	513272.0475	4634315.991
158	518803.5054	4639215.766	349	518345.0647	4637233.091	539	513224.5325	4634339.562
159	518806.1029	4639209.213	350	518346.6687	4637227.648	540	513139.531	4634392.274
160	518807.5816	4639202.508	351	518346.2976	4637223.442	541	513043.6363	4634448.581
161	518808.129	4639191.589	352	518344.3941	4637218.517	542	512918.4944	4634483.821
162	518809.6763	4639179.002	353	518340.929	4637215.396	543	512852.7229	4634497.098
163	518812.1079	4639162.643	354	518337.7277	4637213.678	544	512809.3124	4634498.71
164	518816.692	4639153.873	355	518336.5195	4637209.182	545	512774.4782	4634490.895
165	518822.3448	4639146.966	356	518336.4382	4637204.139	546	512748.1589	4634478.947
166	518826.01	4639139.786	357	518337.2151	4637197.565	547	512691.3123	4634452.885
167	518831.9863	4639131.732	358	518338.8191	4637192.121	548	512646.192	4634419.552
168	518837.9496	4639124.799	359	518338.6549	4637182.175	549	512596.1843	4634377.096
169	518838.0475	4639116.396	360	518337.2618	4637173.291	550	512468.2579	4634311.26
170	518837.11	4639100.698	361	518288.89	4637160.34	551	512375.5226	4634269.279
171	518837.0029	4639085.851	362	518246.9328	4637169.402	552	512326.2921	4634260.883
172	518835.7272	4639051.101	363	518213.4756	4637177.019	553	512295.6745	4634255.661
173	518834.2653	4639032.317	364	518178.4913	4637180.847	554	512230.3377	4634231.617
174	518836.6398	4639020.859	365	518142.0876	4637178.729	555	512139.2866	4634171.942
175	518836.7508	4639011.337	366	518115.0092	4637175.989	556	512110.6033	4634152.965
176	518836.5882	4639001.25	367	518075.9025	4637171.182	557	512057.0421	4634117.416
177	518833.3774	4638988.328	368	518040.9474	4637172.958	558	512014.0258	4634085.165
178	518824.3567	4638969.174	369	517985.6695	4637187.922	559	511963.6393	4634049.653
179	518810.5224	4638954.447	370	517966.4801	4637184.323	560	511917.3623	4634024.772
180	518785.7454	4638932.689	371	517936.7855	4637193.674	561	511893.4058	4633991.685
181	518780.6602	4638924.367	372	517909.9234	4637204.274	562	511808.9182	4633936.056
182	518777.3045	4638911.862	373	517889.4697	4637216.03	563	511711.6818	4633874.211
183	518773.0827	4638889.544	374	517870.3194	4637223.409	564	511658.096	4633840.779
184	518774.64	4638864.071	375	517858.1079	4637235.967	565	511622.4625	4633810.73
185	518776.9966	4638854.154	376	517850.3409	4637248.577	566	511588.8838	4633785.998
186	518778.1919	4638847.726	377	517837.9306	4637276.192	567	511562.7986	4633753.944
187	518777.9706	4638842.681	378	517810.4423	4637280.916	568	511552.6356	4633717.842
188	518774.3622	4638839.838	379	517773.1379	4637276.075	569	511537.6622	4633640.409
189	518769.342	4638837.958	380	517757.5906	4637251.941	570	511539.1023	4633607.618
190	518766.849	4638835.548	381	517720.8209	4637237.769	571	511544.8368	4633569.585
191	518765.2044	4638832.448						

ZONA ME PËRPARËSI ZHVILLIMIN E EKONOMISË MALORE
ZONA 4 - NJËSIA ADMINISTRATIVE RRËSHEN, KTHELLË DHE SELITË, BASHKIA MIRDITË, QARKU LEZHË



BASHKIA MIRDITË

Njësia Administrative	Zona	Sipërfaqe (ha)
Fan	Zona 1	17088
Kthellë dhe Rrëshen	Zona 2	1470
Orosch dhe Fan	Zona 3	9078
Rrëshen, Kthellë dhe Selitë	Zona 4	19731
Rrëshen dhe Orosch	Zona 5	1565
Kajnar, Orosch dhe Rrëshen	Zona 6	10599
Rubik	Zona 7	12563



1:75,000



Legjendë

- Zona me përparësi zhvillimin e ekonomisë malore
- Bashkia Mirditë
- Nderitosa
- Izolpse
- Kategoritë e Ripetit Rrugor
- B. Rruga Interurbane Koyesore
- Kategoritë C. Rruga Interurbane Dytësore
- E. Rruga Urbane Dytësore
- Kategoritë F. Rruga Lokale

*Zona 4 është bërthorë e Njësia Administrative Rrëshen, Kthellë dhe Selitë, me sipërfaqe prej 19731 ha
 **Sistemi Koordinativ: KKKGLSH (Komiza Referueses Geodolike Shqiptare)/EPSG 8870

Zona 4								
Njësia Administrative Rrëshen, Kthellë dhe Selitë								
Nr.	Koordinata X	Koordinata Y	Nr.	Koordinata X	Koordinata Y	Nr.	Koordinata X	Koordinata Y
1	512728.1808	4631649.57	254	506033.9673	4622599.006	507	499985.9621	4620322.122
2	512779.5652	4631599.368	255	506020.2501	4622577.257	508	499969.9969	4620341.573
3	512822.4448	4631552.453	256	506016.8391	4622542.928	509	499911.8534	4620371.267
4	512877.4322	4631483.666	257	506010.1354	4622518.72	510	499898.6878	4620394.258
5	512906.9244	4631423.049	258	505999.6888	4622488.754	511	499873.2068	4620416.25
6	512931.16	4631377.611	259	505989.1831	4622463.867	512	499855.4905	4620426.599
7	512982.4459	4631335.875	260	505976.0345	4622447.84	513	499837.2359	4620436.723
8	513030.4047	4631289.019	261	505951.5371	4622401.686	514	499813.5331	4620436.448
9	513074.7605	4631260.749	262	505900.7974	4622365.052	515	499796.6024	4620436.251
10	513147.5281	4631242.881	263	505886.3069	4622330.611	516	499780.6981	4620435.722
11	513241.4737	4631177.848	264	505862.0381	4622312.532	517	499773.4163	4620427.938
12	513333.7316	4631056.692	265	505851.3554	4622302.883	518	499750.3775	4620406.928
13	513370.8097	4630999.7	266	505833.7577	4622265.501	519	499724.2973	4620392.655
14	513430.2289	4630948.57	267	505821.4653	4622251.685	520	499694.4126	4620377.915
15	513466.9811	4630919.586	268	505806.6199	4622230.867	521	499664.9511	4620363.18
16	513533.2229	4630883.942	269	505798.0617	4622215.68	522	499625.7201	4620351.295
17	513610.2441	4630884.838	270	505784.7951	4622195.674	523	499598.7147	4620343.784
18	513694.1043	4630899.82	271	505768.3341	4622177.22	524	499570.3411	4620344.725
19	513827.3373	4630927.481	272	505746.2787	4622161.876	525	499560.232	4620340.374
20	513901.8511	4630903.138	273	505724.14	4622153.678	526	499557.6038	4620347.963
21	513993.799	4630850.686	274	505709.9411	4622145.573	527	499536.2783	4620361.685
22	514050.6293	4630781.318	275	505693.3141	4622141.409	528	499528.5022	4620375.141
23	514154.7794	4630737.712	276	505677.4627	4622138.843	529	499521.9762	4620390.305
24	514264.857	4630666.163	277	505656.0904	4622133.036	530	499513.8456	4620397.83
25	514335.8541	4630582.954	278	505645.0395	4622127.349	531	499499.4054	4620401.896
26	514370.2456	4630516.127	279	505630.8405	4622119.243	532	499487.5196	4620404.721
27	514427.0106	4630452.361	280	505614.232	4622113.492	533	499463.0291	4620399.357
28	514492.4388	4630366.286	281	505598.3713	4622111.72	534	499438.2138	4620385.522
29	514594.0489	4630300.241	282	505585.6865	4622109.984	535	499403.8801	4620352.991
30	514750.6317	4630324.472	283	505564.2589	4622108.941	536	499402.083	4620325.414
31	514944.3742	4630284.709	284	505547.6411	4622103.983	537	499366.8193	4620294.185
32	515101.9348	4630224.917	285	505497.7787	4622089.905	538	499346.354	4620276.084
33	515136.1307	4630174.894	286	505470.9409	4622076.094	539	499329.7204	4620244.248
34	515145.5759	4630085.367	287	505436.2467	4622055.045	540	499296.4245	4620195.179
35	515076.2082	4630028.537	288	505404.7375	4622033.24	541	499274.0053	4620120.837
36	515102.0995	4629970.013	289	505377.152	4622015.45	542	499249.4277	4620024.443
37	515038.3052	4629923.386	290	505350.2958	4622003.227	543	499214.191	4619966.654
38	515084.1886	4629824.145	291	505323.3567	4621998.149	544	499202.9153	4619934.761
39	515154.3784	4629737.784	292	505289.2718	4621992.989	545	499180.7709	4619927.093
40	515192.4104	4629671.34	293	505263.9667	4621983.96	546	499151.9676	4619945.816
41	515231.8726	4629583.396	294	505250.6447	4621968.718	547	499126.254	4619971.986
42	515189.0898	4629475.22	295	505229.4939	4621943.856	548	499103.9375	4619979.138
43	515164.5997	4629413.31	296	505215.544	4621914.314	549	499085.9659	4619976.811
44	515182.2841	4629337.884	297	505209.4414	4621892.803	550	499060.7564	4619959.579
45	515169.2903	4629250.897	298	505197.1532	4621856.928	551	498983.5161	4619955.505
46	515123.4238	4629184.437	299	505175.3468	4621820.147	552	498857.4821	4619959.335
47	515157.891	4629134.017	300	505158.9873	4621792.959	553	498818.2896	4619960.997

48	515194.3277	4629096.325	301	505146.5608	4621768.993	554	498782.2368	4619964.351
49	515243.4679	4629058.781	302	505137.3193	4621744.269	555	498722.1429	4619942.478
50	515313.9285	4629008.78	303	505135.1311	4621727.569	556	498654.131	4619912.84
51	515357.0371	4628943.638	304	505141.0024	4621700.639	557	498619.8682	4619900.266
52	515374.9604	4628859.144	305	505140.4759	4621677.605	558	498587.267	4619881.36
53	515354.7977	4628772.091	306	505148.5539	4621665.788	559	498560.9928	4619864.644
54	515325.9689	4628701.876	307	505155.0163	4621656.334	560	498538.3929	4619850.618
55	515307.5293	4628648.723	308	505162.2725	4621646.89	561	498516.31	4619837.657
56	515279.3162	4628525.578	309	505159.9645	4621640.51	562	498486.8969	4619817.729
57	515233.7709	4628436.111	310	505154.4713	4621634.888	563	498464.2602	4619806.879
58	515190.3429	4628346.669	311	505145.0085	4621629.22	564	498447.3104	4619807.74
59	515152.9465	4628284.826	312	505129.9786	4621624.281	565	498424.4462	4619816.474
60	515105.0624	4628214.39	313	505118.937	4621617.8	566	498399.9695	4619827.307
61	515056.9073	4628167.244	314	505107.1476	4621607.34	567	498379.2593	4619832.889
62	515019.5601	4628101.166	315	505096.1615	4621596.095	568	498349.6495	4619829.898
63	514998.9786	4628050.105	316	505084.3904	4621584.048	569	498314.3343	4619816.783
64	514997.3292	4628009.853	317	505077.3186	4621577.613	570	498287.728	4619802.299
65	515024.3123	4627874.644	318	505066.2493	4621573.514	571	498278.5636	4619797.311
66	515088.6878	4627825.722	319	505050.3886	4621571.742	572	498261.9641	4619768.003
67	515136.7146	4627737.393	320	504979.8833	4621557.423	573	497360.9173	4619580.894
68	515080.4187	4627654.204	321	504955.3076	4621553.962	574	496073.0195	4621887.512
69	515107.1892	4627520.059	322	504918.9608	4621538.452	575	496150.2734	4622605.83
70	515179.0328	4627364.03	323	504889.7321	4621525.408	576	496008.8683	4623094.709
71	515263.5774	4627320.195	324	504848.6862	4621504.285	577	495950.0683	4623453.109
72	515330.5008	4627224.317	325	504818.765	4621482.498	578	495462.0454	4624996.391
73	515340.5165	4627146.709	326	504788.9082	4621455.153	579	495048.2703	4625198.068
74	515311.2562	4627074.247	327	504761.4426	4621427.041	580	494852.2703	4625198.068
75	515225.9011	4626955.506	328	504740.2641	4621404.562	581	493781.2703	4626003.068
76	515228.5693	4626877.673	329	504708.9025	4621370.053	582	493849.9409	4627636.436
77	515227.3384	4626801.428	330	504690.9921	4621339.67	583	494122.9409	4628608.036
78	515207.1261	4626718.608	331	504682.5537	4621314.162	584	494089.6022	4628849.643
79	515229.2588	4626636.282	332	504677.2081	4621295.837	585	494080.5022	4628920.343
80	515253.3857	4626564.566	333	504671.0778	4621276.708	586	494349.8218	4629204.833
81	515290.2653	4626488.763	334	504645.154	4621252.585	587	494605.7307	4629345.048
82	515312.2012	4626423.374	335	504631.786	4621241.313	588	494709.3307	4629485.048
83	515295.9277	4626366.012	336	504606.5177	4621229.108	589	494726.1307	4629507.448
84	515251.9825	4626321.032	337	504582.8098	4621219.304	590	494775.1307	4629536.848
85	515212.3454	4626269.75	338	504574.9808	4621209.684	591	494866.1307	4629608.248
86	515192.1822	4626182.697	339	504572.0448	4621189.005	592	495024.4184	4629718.031
87	515191.6651	4626045.05	340	504562.8679	4621158.723	593	495024.4184	4629774.031
88	515179.9709	4625958.095	341	504552.1953	4621120.485	594	495060.8184	4629844.031
89	515195.7764	4625873.578	342	504533.7122	4621071.038	595	495052.4184	4629933.631
90	515254.6408	4625728.151	343	504524.4153	4621051.078	596	495094.4184	4630028.831
91	515285.7839	4625599.344	344	504516.8078	4621022.404	597	495147.6184	4630222.031
92	515286.9654	4625497.715	345	504520.2788	4620997.034	598	495192.4184	4630286.431
93	515279.9487	4625372.699	346	504530.1106	4620970.944	599	495290.4184	4630353.631
94	515292.578	4625197.09	347	504539.9056	4620948.03	600	495430.4184	4630488.031
95	515297.5016	4625137.856	348	504545.6938	4620928.246	601	495550.8184	4630602.831
96	515321.9729	4625104.268	349	504551.602	4620898.14	602	495679.6184	4630714.831
97	515288.3183	4625084.819	350	504550.2816	4620875.097	603	495832.2184	4630875.831

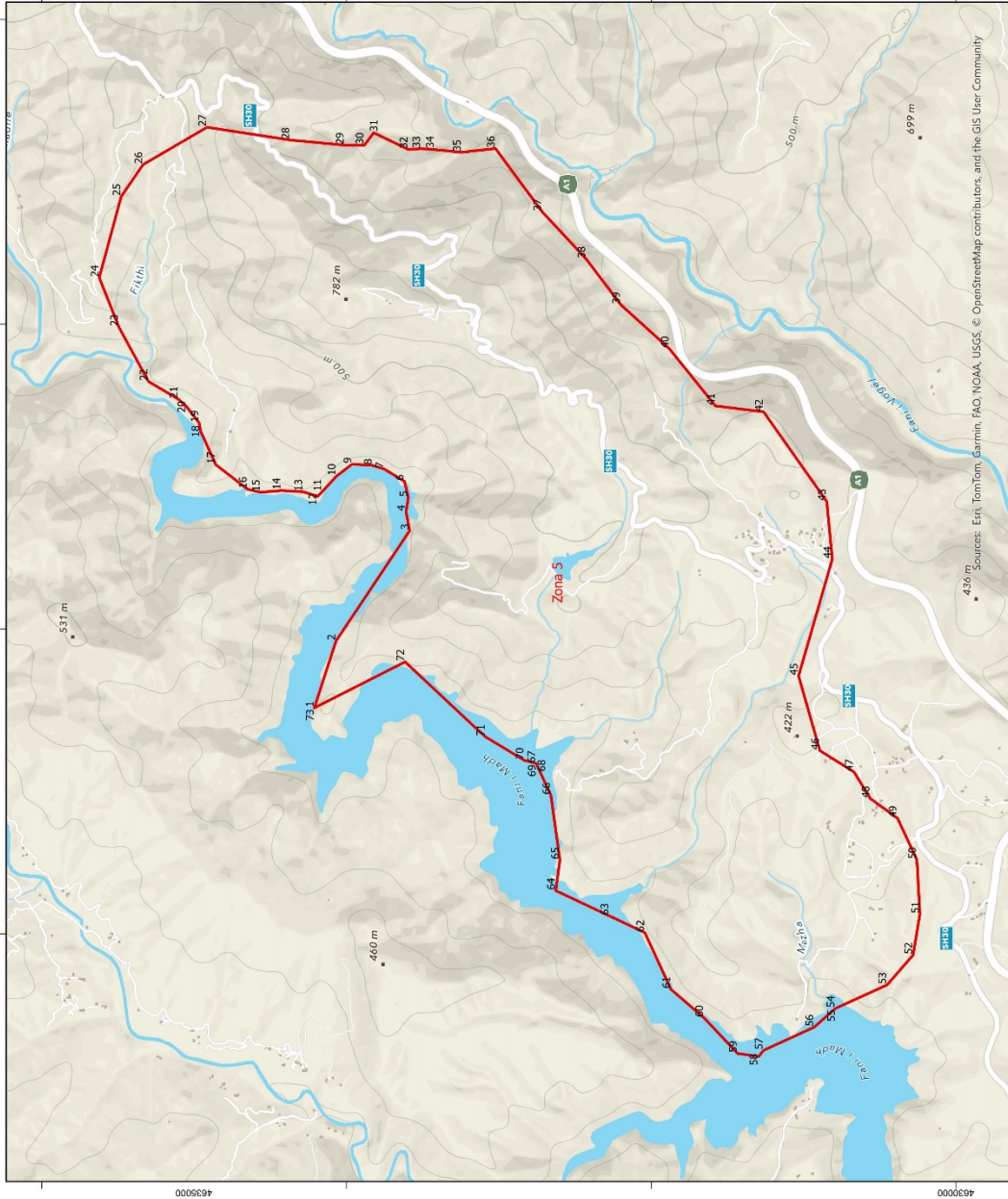
98	515202.9293	4625047.036	351	504550.5398	4620852.866	604	495868.6184	4630926.231
99	514979.9771	4624917.392	352	504557.5002	4620800.539	605	495921.6978	4631000.869
100	514803.0384	4624836.986	353	504561.174	4620757.702	606	495924.4978	4631031.669
101	514672.2856	4624790.998	354	504567.2206	4620715.687	607	495920.0178	4631056.309
102	514537.0767	4624764.015	355	504573.2209	4620677.642	608	495898.7378	4631093.829
103	514438.0581	4624720.514	356	504579.2859	4620634.039	609	495890.0578	4631116.229
104	514372.7679	4624690.109	357	504588.4252	4620599.206	610	495888.9378	4631153.749
105	514258.5348	4624680.311	358	504589.5419	4620571.427	611	495906.9978	4631210.869
106	514114.5125	4624682.872	359	504586.6797	4620544.396	612	495925.1978	4631243.069
107	513995.8234	4624692.08	360	504577.5673	4620508.557	613	495926.5978	4631276.669
108	513815.3896	4624730.216	361	504570.0796	4620469.561	614	495915.3978	4631313.069
109	513635.0789	4624757.765	362	504556.3509	4620420.964	615	495891.5978	4631370.469
110	513460.8492	4624808.678	363	504542.5762	4620376.336	616	495912.5978	4631451.669
111	513408.0903	4624793.242	364	504534.9318	4620350.837	617	495990.9978	4631513.269
112	513319.2397	4624785.857	365	504524.1761	4620319.744	618	495989.5978	4631562.269
113	513172.9775	4624798.979	366	504499.0646	4620294.042	619	496024.5978	4631828.269
114	513011.6483	4624833.102	367	504495.2148	4620283.675	620	496353.5978	4631814.269
115	512865.2138	4624861.045	368	504491.411	4620269.338	621	496850.5978	4631716.269
116	512755.4241	4624880.441	369	504465.4594	4620247.596	622	497130.5978	4631632.269
117	512752.7537	4624880.913	370	504449.0077	4620228.348	623	497375.5978	4631569.269
118	512616.5856	4624936.503	371	504443.6714	4620209.228	624	497634.5978	4631359.269
119	512452.7456	4625004.477	372	504443.7728	4620200.495	625	497879.5978	4631254.269
120	512358.9715	4625056.325	373	504438.4364	4620181.375	626	498369.5978	4631282.269
121	512282.1355	4625108.37	374	504425.8623	4620170.112	627	499195.5978	4631163.269
122	512241.4648	4625146.013	375	504417.1656	4620166.835	628	500734.8313	4632341.693
123	512175.5596	4625168.54	376	504406.1333	4620159.561	629	502387.8808	4632632.899
124	512118.1233	4625191.165	377	504385.7578	4620136.296	630	502595.1849	4632713.367
125	512083.7306	4625235.233	378	504367.8657	4620104.326	631	502841.2479	4632729.242
126	512045.2264	4625268.666	379	504360.1936	4620081.209	632	503223.5649	4632739.409
127	512036.2072	4625263.071	380	504359.704	4620054.999	633	504595.3577	4631766.684
128	511980.962	4625279.369	381	504362.2057	4620044.705	634	507087.3577	4631626.684
129	511871.0132	4625265.386	382	504364.8182	4620024.884	635	507237.2922	4631648.988
130	511731.7184	4625225.651	383	504361.2265	4619992.286	636	507424.8901	4631676.895
131	511622.065	4625186.261	384	504355.2437	4619960.454	637	507432.7129	4631698.155
132	511512.7069	4625121.464	385	504351.5691	4619935.001	638	507448.4591	4631715.355
133	511411.867	4625052.531	386	504348.7529	4619904	639	507478.0501	4631730.045
134	511360.6016	4625037.975	387	504335.8274	4619854.618	640	507494.4539	4631737.148
135	511295.3364	4625005.453	388	504323.2809	4619840.973	641	507511.4274	4631740.007
136	511231.8439	4625002.598	389	504312.3222	4619827.347	642	507537.9673	4631743.497
137	511096.9313	4624950.209	390	504291.8731	4619810.434	643	507563.4492	4631745.925
138	511009.1457	4624813.701	391	504258.7021	4619794.962	644	507598.5099	4631747.923
139	510876.3551	4624765.591	392	504230.2489	4619783.514	645	507616.5599	4631750.264
140	510806.9186	4624760.495	393	504189.1846	4619763.98	646	507624.3959	4631762.05
141	510765.4845	4624681.665	394	504178.1614	4619755.911	647	507637.8507	4631793.039
142	510743.1055	4624603.057	395	504157.7583	4619735.029	648	507653.3001	4631835.736
143	510714.9162	4624477.796	396	504136.5705	4619713.343	649	507660.4947	4631857.088
144	510654.8208	4624364.868	397	504103.5657	4619683.579	650	507675.2486	4631868.424
145	510596.3503	4624294.31	398	504077.6971	4619654.693	651	507701.1926	4631876.699
146	510524.8073	4624255.364	399	504065.2151	4619635.49	652	507732.9427	4631889.824
147	510438.296	4624228.948	400	504044.8397	4619612.226	653	507746.1518	4631896.36

148	510355.8715	4624215.285	401	504033.8074	4619604.951	654	507748.1425	4631907.538
149	510269.3356	4624190.986	402	504021.9165	4619603.225	655	507746.5122	4631916.102
150	510193.4598	4624160.459	403	504009.2132	4619603.077	656	507745.3186	4631922.391
151	510130.0904	4624147.017	404	503998.8733	4619604.545	657	507737.6168	4631944.63
152	510077.0366	4624156.988	405	503973.393	4619610.602	658	507727.6916	4631974.817
153	510030.039	4624192.44	406	503959.8681	4619612.827	659	507717.7766	4632004.993
154	509985.3064	4624215.212	407	503944.8014	4619611.064	660	507721.774	4632026.839
155	509947.1471	4624219.004	408	503926.6142	4619604.5	661	507739.0031	4632054.15
156	509899.9439	4624219.318	409	503909.2579	4619594.77	662	507754.7865	4632068.149
157	509844.0465	4624200.669	410	503895.8068	4619590.643	663	507781.2421	4632078.031
158	509773.2669	4624187.142	411	503875.2286	4619584.846	664	507821.3831	4632100.817
159	509739.5511	4624172.986	412	503863.3469	4619582.326	665	507860.6867	4632149.114
160	509697.4279	4624153.439	413	503845.1044	4619580.526	666	507862.4776	4632151.675
161	509649.2361	4624109.469	414	503822.9197	4619576.298	667	507892.5794	4632194.673
162	509582.0753	4624057.868	415	503806.3666	4619565.783	668	508139.5191	4632449.838
163	509524.1099	4624034.961	416	503786.6468	4619554.437	669	508183.4584	4632478.901
164	509452.4563	4624005.541	417	503752.5898	4619546.895	670	508288.2338	4632548.208
165	509385.8989	4623993.121	418	503726.4262	4619543.415	671	508598.7411	4632730.134
166	509330.9001	4623988.247	419	503697.8623	4619541.495	672	508795.8431	4632808.939
167	509284.4687	4623975.002	420	503657.4905	4619530.703	673	508903.0075	4632851.783
168	509199.2863	4623980.772	421	503627.477	4619516.855	674	508978.2568	4632879.37
169	509086.5928	4623929.7	422	503618.1432	4619500.072	675	509209.7025	4632964.197
170	508850.3152	4623889.239	423	503618.3092	4619485.781	676	509419.9504	4633006.01
171	508549.3823	4623884.471	424	503618.5028	4619469.108	677	509479.3902	4633011.524
172	508441.1524	4623908.613	425	503618.5674	4619463.55	678	509479.7168	4633011.727
173	508321.6122	4623922.463	426	503601.5061	4619428.413	679	509479.7788	4633011.859
174	508161.0535	4623859.637	427	503591.3415	4619414.796	680	509652.4811	4633119.032
175	508001.6022	4623810.794	428	503571.7231	4619394.717	681	509708.9424	4633154.393
176	507775.348	4623687.083	429	503556.0285	4619378.653	682	509794.3841	4633207.899
177	507707.4762	4623693.923	430	503544.3681	4619357.078	683	509803.8688	4633213.841
178	507670.1887	4623696.877	431	503539.7704	4619342.732	684	510200.1606	4633363.193
179	507649.6846	4623694.522	432	503530.4643	4619323.566	685	510366.4839	4633417.661
180	507620.0179	4623679.478	433	503520.3549	4619305.185	686	510429.3199	4633438.231
181	507597.1076	4623665.336	434	503509.4516	4619286.795	687	510577.3293	4633460.106
182	507578.1588	4623656.649	435	503492.1875	4619269.125	688	510644.6051	4633470.049
183	507549.5879	4623656.317	436	503465.7289	4619249.337	689	510695.0803	4633477.509
184	507518.8268	4623662.309	437	503434.6562	4619218.04	690	510745.8818	4633470.558
185	507487.0321	4623666.173	438	503422.162	4619199.896	691	510886.6428	4633451.308
186	507458.3505	4623675.365	439	503406.5534	4619176.423	692	510925.429	4633441.731
187	507432.7943	4623688.826	440	503366.3634	4619172.78	693	510926.8843	4633441.371
188	507401.9717	4623700.109	441	503321.853	4619176.498	694	510943.4791	4633437.274
189	507349.1734	4623689.97	442	503168.775	4619229.775	695	511026.6116	4633416.753
190	507327.643	4623684.852	443	503088.0143	4619294.893	696	511205.351	4633382.649
191	507274.6601	4623690.586	444	503010.6144	4619356.046	697	511388.9811	4633371.862
192	507237.55	4623696.505	445	502959.0886	4619416.855	698	511412.5503	4633370.175
193	507196.1703	4623705.549	446	502919.195	4619478.857	699	511499.6945	4633363.937
194	507169.3222	4623739.103	447	502895.1803	4619541.044	700	511497.3458	4633357.611
195	507153.2281	4623757.966	448	502889.2596	4619558.142	701	511461.1056	4633318.777
196	507128.6931	4623774.614	449	502868.8886	4619616.968	702	511438.1205	4633280.868
197	507114.7781	4623788.109	450	502838.8052	4619654.734	703	511423.1714	4633259.802

198	507093.0533	4623789.646	451	502800.5481	4619666.994	704	511381.4742	4633238.541
199	507070.6087	4623792.747	452	502760.395	4619660.176	705	511371.0524	4633224.661
200	507055.8263	4623761.067	453	502677.984	4619645.455	706	511355.5122	4633195.906
201	507051.8395	4623739.854	454	502614.5909	4619634.131	707	511346.51	4633169.014
202	507029.8391	4623720.549	455	502537.5345	4619614.179	708	511304.4001	4633131.81
203	507017.4114	4623697.121	456	502503.6003	4619597.511	709	511295.1092	4633072.197
204	506998.6471	4623672.562	457	502483.8572	4619578.941	710	511268.4598	4633037.2
205	506973.3492	4623663.801	458	502474.853	4619547.786	711	511243.3836	4633009.392
206	506958.633	4623655.163	459	502473.355	4619521.509	712	511224.4962	4632995.414
207	506936.5958	4623639.032	460	502454.1709	4619498.811	713	511210.9985	4632973.031
208	506914.706	4623610.203	461	502433.0524	4619475.753	714	511191.1885	4632947.401
209	506894.8711	4623586.69	462	502404.865	4619468.658	715	511172.4368	4632921.783
210	506879.1214	4623575.923	463	502384.7721	4619467.366	716	511148.2463	4632908.801
211	506858.1423	4623559.805	464	502350.287	4619483.603	717	511115.5287	4632901.012
212	506827.7871	4623530.877	465	502310.8252	4619524.3	718	511095.5216	4632892.312
213	506809.921	4623520.086	466	502260.7769	4619542.199	719	511101.1328	4632864.861
214	506774.0044	4623514.377	467	502234.0182	4619574.553	720	511117.3506	4632835.416
215	506757.0982	4623512.064	468	502207.2044	4619606.431	721	511136.5335	4632823.998
216	506732.7723	4623510.723	469	502166.7271	4619652.559	722	511175.822	4632812.814
217	506707.4252	4623506.195	470	502140.9652	4619683.606	723	511207.6539	4632805.776
218	506676.9593	4623486.791	471	502132.3994	4619707.644	724	511215.9167	4632788.403
219	506646.6165	4623456.806	472	502044.6217	4619737.41	725	511223.6887	4632772.063
220	506623.6931	4623425.848	473	501927.2051	4619777.228	726	511248.5304	4632749.102
221	506585.057	4623380.949	474	501830.3547	4619807.847	727	511277.1877	4632742.027
222	506564.2009	4623354.249	475	501729.1419	4619810.379	728	511309.2044	4632719.116
223	506538.1153	4623322.196	476	501617.5404	4619791.95	729	511387.1934	4632683.828
224	506529.9327	4623297.759	477	501571.3905	4619798.128	730	511468.5471	4632593.826
225	506510.0978	4623274.246	478	501537.4339	4619798.374	731	511521.9869	4632520.519
226	506487.0885	4623250.695	479	501496.2882	4619829.133	732	511545.1088	4632466.171
227	506466.1217	4623233.518	480	501446.5257	4619881.911	733	511589.9116	4632424.992
228	506441.8942	4623223.712	481	501416.3808	4619926.01	734	511631.7353	4632377.854
229	506424.0404	4623211.863	482	501393.6062	4619973.369	735	511679.3402	4632319.676
230	506394.5344	4623200.937	483	501357.0785	4620023.762	736	511717.5978	4632275.137
231	506359.7374	4623189.949	484	501334.2427	4620073.575	737	511764.5769	4632239.7
232	506348.6151	4623193.842	485	501319.1197	4620106.564	738	511825.3988	4632197.017
233	506331.2717	4623204.084	486	501280.2575	4620151.425	739	511911.1715	4632179.45
234	506270.5115	4623175.577	487	501256.9776	4620160.449	740	512002.4746	4632129.846
235	506224.2124	4623152.603	488	501221.878	4620179.862	741	512052.21	4632077.948
236	506193.9828	4623131.085	489	501185.8756	4620181.56	742	512086.3309	4632056.12
237	506150.3266	4623099.251	490	501144.6071	4620181.081	743	512106.5842	4632043.656
238	506116.5089	4623058.642	491	501071.618	4620178.116	744	512137.3211	4632039.78
239	506096.0293	4623035.968	492	500957.3533	4620162.02	745	512155.5321	4632020.942
240	506096.4274	4623016.288	493	500857.1173	4620149.167	746	512164.1577	4632007.284
241	506099.9692	4622986.706	494	500775.6384	4620148.221	747	512191.8431	4631992.79
242	506091.4067	4622956.54	495	500700.0906	4620134.196	748	512214.2253	4631979.292
243	506091.2441	4622915.899	496	500653.7403	4620164.796	749	512229.1139	4631973.115
244	506092.8458	4622887.342	497	500618.1766	4620200.714	750	512246.2174	4631958.498
245	506094.4698	4622856.882	498	500572.2792	4620197.821	751	512263.2593	4631949.171
246	506094.1301	4622831.478	499	500439.6642	4620192.3	752	512279.1814	4631945.123
247	506095.7024	4622805.461	500	500357.8994	4620182.882	753	512291.3138	4631930.818

248	506096.027	4622777.526	501	500255.8285	4620175.163	754	512331.0776	4631926.515
249	506095.7315	4622748.312	502	500162.3246	4620196.137	755	512425.0932	4631878.332
250	506089.7218	4622719.033	503	500100.4314	4620226.244	756	512535.9853	4631806.213
251	506086.2223	4622692.323	504	500067.2816	4620268.195	757	512582.9463	4631761.333
252	506083.4019	4622661.81	505	500033.5006	4620290.597	758	512642.8159	4631709.536
253	506062.2799	4622621.56	506	500009.179	4620299.199	759	512728.1808	4631649.57

ZONA ME PËRPARËSI ZHVILLIMIN E EKONOMISË MALORE
ZONA 5 , NJËSIA ADMINISTRATIVE RRËSHEN DHE OROSH, BASHKIA MIRDITË , QARKU LEZHË



BASHKIA MIRDITË

Njësia Administrative	Zona	Sipërfaqe (ha)
Fan	Zona 1	17088
Kthella dhe Rrëshen	Zona 2	1470
Orosh dhe Fan	Zona 3	9078
Rrëshen, Kthellë dhe Selitë	Zona 4	19731
Rrëshen dhe Orosh	Zona 5	1365
Kaçnar, Orosh dhe Rrëshen	Zona 6	10599
Rubik	Zona 7	12563



1:25,000

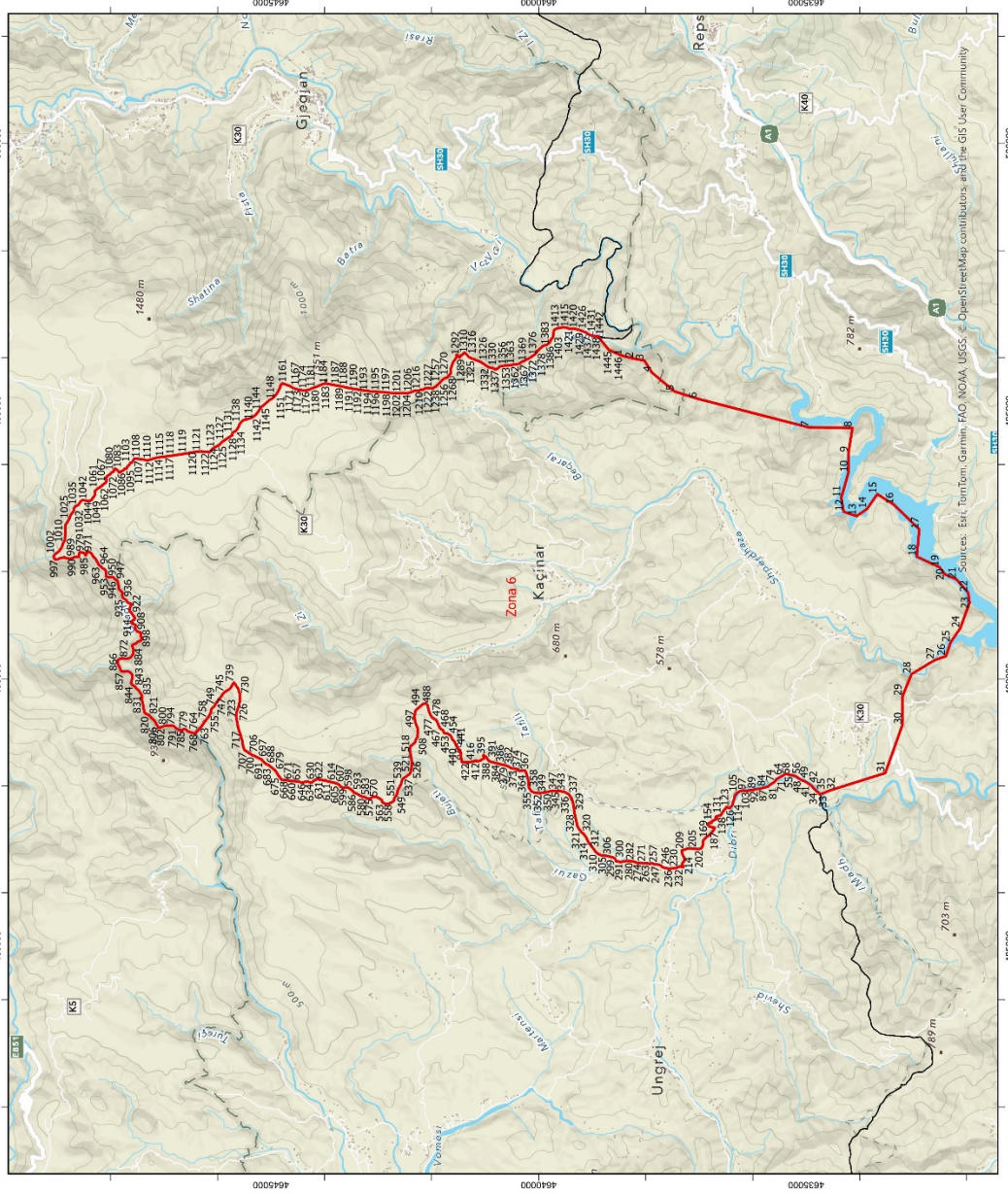


- Legjendë**
- Zona me përparësi zhvillimin e ekonomisë malore
 - Bashkia Mirditë
 - Ndërtesa
 - Izolpase
 - Kategoritë e Rrjetit Rrugor
 - B. Rruge Interurbane Kryesore
 - Kategoritë C. Rruge Interurbane Dytësore
 - Kategoritë F. Rruge Lokale

*Zona 5 në territorin e Njësise Administrative Rrëshen dhe Orosh, me sipërfaqe prej 1365 ha
 **Sistemi Koordinativ: KRGLSH (Komiza Referuese Gjeodetike Shqiptare)/ EPSG 8870

Zona 5								
Njësia Administrative Rrëshen dhe Orosh								
Nr.	Koordinata X	Koordinata Y	Nr.	Koordinata X	Koordinata Y	Nr.	Koordinata X	Koordinata Y
1	493481.9694	4634210.015	26	497047.8782	4635333.951	50	492485.0837	4630256.08
2	493921.5694	4634067.215	27	497293.1723	4634913.748	51	492128.0837	4630236.48
3	494645.1528	4633584.11	28	497209.1723	4634367.748	52	491859.9188	4630281.277
4	494769.7239	4633607.253	29	497175.5723	4634012.148	53	491663.9188	4630452.077
5	494861.8913	4633592.604	30	497175.5723	4633880.548	54	491509.9188	4630790.877
6	494968.9913	4633617.804	31	497256.8468	4633819.685	55	491509.9188	4630790.877
7	495050.1913	4633750.804	32	497147.7968	4633593.444	56	491386.9056	4630930.47
8	495073.2913	4633826.404	33	497151.9968	4633508.044	57	491234.1836	4631263.489
9	495082.2882	4633960.858	34	497149.1968	4633450.644	58	491194.4056	4631294.47
10	495002.3927	4634065.208	35	497128.8968	4633242.744	59	491214.0056	4631433.07
11	494900.1927	4634159.008	36	497153.2468	4633022.385	60	491448.3836	4631654.089
12	494870.7927	4634187.008	37	496738.8468	4632716.485	61	491635.3277	4631871.022
13	494900.5583	4634282.815	38	496428.0468	4632426.685	62	492007.0101	4632041.92
14	494908.5927	4634426.408	39	496128.4468	4632199.885	63	492117.1908	4632275.556
15	494897.3927	4634562.208	40	495839.5694	4631881.115	64	492282.8445	4632626.821
16	494916.9927	4634647.608	41	495464.3694	4631578.715	65	492483.6837	4632599.881
17	495078.8714	4634856.753	42	495425.1694	4631262.315	66	492909.2837	4632658.681
18	495297.3801	4634955.594	43	494837.1694	4630847.915	67	493117.1574	4632755.871
19	495351.9801	4634965.394	44	494459.1694	4630811.515	68	493117.1574	4632755.871
20	495459.0801	4635047.994	45	493691.9694	4631032.715	69	493117.1574	4632755.871
21	495509.2352	4635103.417	46	493201.8837	4630893.08	70	493138.1574	4632832.871
22	495624.3018	4635298.254	47	493061.8837	4630669.08	71	493291.5694	4633087.215
23	495981.4468	4635492.685	48	492886.8837	4630561.28	72	493784.3694	4633613.615
24	496306.2468	4635621.485	49	492758.0837	4630383.48	73	493481.9694	4634210.015
25	496838.5782	4635477.451						

ZONA ME PËRPARËSI ZHVILLIMIN E EKONOMISË MALORE
ZONA 6, NJËSIA ADMINISTRATIVE KAÇINAR, OROSH DHE RRËSHEN, BASHKIA MIRDITË, QARKU LEZHË



BASHKIA MIRDITË

Njësia Administrative	Zona	Sipërfaqe (ha)
Fan	Zona 1	17088
Kthellë dhe Rrëshen	Zona 2	1470
Orosh dhe Fan	Zona 3	9078
Rrëshen, Kthellë dhe Seilitë	Zona 4	19731
Rrëshen dhe Orosh	Zona 5	1565
Kaçinar, Orosh dhe Rrëshen	Zona 6	10599
Rubik	Zona 7	12563



1:70,000



Legjendë

- Zona me përparësi zhvillimin e ekonomisë malore
 - Bashkia Mirditë
 - Ndërrësa
 - Izopse
- Kategoritë e Rrjetit Rrugor
- B. Rruge Interurbane Kryesore
 - Kategoritë C- Rruge Interurbane Dytësore
 - Kategoritë F- Rruge Lokale

*Zona 6 është bashkimi i Njësia Administrative Kaçinar, Orosh dhe Rrëshen me sipërfaqe prej 10599 ha
 **Sistemi Koordinativ: KRGSJSH (Komiza Referencë Gjendëzake Shqiptare) EPCS 8970

Zona 6								
Njësia Administrative Kaçinar, Orosh dhe Rrëshen								
Nr.	Koordinata X	Koordinata Y	Nr.	Koordinata X	Koordinata Y	Nr.	Koordinata X	Koordinata Y
1	496031.6851	4638435.998	483	489405.6423	4642052.039	965	492154.8595	4648235.607
2	495979.8851	4638221.798	484	489457.3397	4642062.445	966	492188.3085	4648253.141
3	495944.6476	4638026.17	485	489481.3827	4642066.367	967	492246.3255	4648287.473
4	495720.6476	4637886.17	486	489498.1244	4642071.884	968	492273.2478	4648320.17
5	495366.9759	4637462.498	487	489511.7561	4642079.886	969	492302.2601	4648337.019
6	495230.6476	4637032.17	488	489525.6025	4642093.492	970	492325.6175	4648348.721
7	494692.1862	4634939.87	489	489535.2088	4642110.41	971	492352.6509	4648371.895
8	494688.6862	4634134.87	490	489536.9765	4642126.957	972	492364.3803	4648400.606
9	494219.6862	4634211.87	491	489531.9705	4642147.906	973	492364.4891	4648445.691
10	493848.0421	4634211.792	492	489513.0537	4642176.216	974	492336.6772	4648452.666
11	493377.6421	4634346.192	493	489491.0549	4642201.168	975	492310.3752	4648457.759
12	493120.0421	4634301.392	494	489481.8304	4642211.565	976	492307.0378	4648471.689
13	493038.9056	4634056.67	495	489423.5928	4642281.611	977	492334.7147	4648487.338
14	493170.5056	4633863.47	496	489389.0156	4642304.316	978	492354.8224	4648512.25
15	493447.7056	4633670.27	497	489337.7734	4642314.923	979	492360.0093	4648534.712
16	493248.9056	4633356.67	498	489290.1382	4642316.468	980	492360.9596	4648562.993
17	492789.7056	4632886.27	499	489253.0298	4642316.035	981	492364.8299	4648579.675
18	492280.1056	4632933.87	500	489203.4248	4642306.354	982	492327.9025	4648588.133
19	492083.4056	4632508.27	501	489166.4144	4642297.519	983	492315.2122	4648587.35
20	491950.4056	4632407.47	502	489125.993	4642280.942	984	492294.2386	4648589.01
21	491856.6056	4632190.47	503	489066.7327	4642258.543	985	492280.2562	4648590.117
22	491607.4056	4631972.07	504	489010.7609	4642254.389	986	492274.431	4648599.574
23	491421.2056	4631945.47	505	488975.6714	4642260.982	987	492274.8584	4648617.358
24	490943.0101	4632118.92	506	488944.099	4642266.216	988	492279.7152	4648636.464
25	490672.9251	4632303.738	507	488920.3263	4642263.138	989	492278.1341	4648663.114
26	490420.9251	4632387.738	508	488907.7235	4642262.991	990	492261.2416	4648695.936
27	490350.9251	4632590.738	509	488890.0971	4642273.289	991	492242.2071	4648749.052
28	490084.9251	4633031.738	510	488876.6553	4642285.037	992	492246.938	4648778.951
29	489671.9251	4633199.738	511	488861.8459	4642293.968	993	492254.0524	4648848.807
30	489139.9251	4633199.738	512	488850.5943	4642298.038	994	492272.5508	4648869.417
31	488236.9251	4633521.738	513	488817.6298	4642302.555	995	492257.1095	4648903.815
32	487914.9251	4634550.738	514	488802.0947	4642315.379	996	492254.2161	4648939.584
33	487838.1043	4634742.588	515	488789.0094	4642332.592	997	492236.3422	4648979.479
34	487879.712	4634780.632	516	488772.8204	4642351.731	998	492227.6439	4649017.477
35	487916.1686	4634821.925	517	488745.0085	4642382.777	999	492230.5293	4649042.274
36	487935.5186	4634843.998	518	488738.1661	4642393.062	1000	492255.1112	4649058.628
37	487973.7465	4634880.576	519	488701.9139	4642403.283	1001	492298.2549	4649060.844
38	487981.2495	4634885.706	520	488681.1664	4642405.001	1002	492324.5151	4649041.467
39	487989.0455	4634889.718	521	488603.1367	4642394.848	1003	492342.5663	4649018.183
40	488002.0519	4634903.314	522	488548.3162	4642388.047	1004	492364.5083	4648987.961
41	488020.5226	4634928.738	523	488526.5334	4642382.471	1005	492387.771	4648957.912
42	488042.8325	4634961.21	524	488507.8247	4642377.491	1006	492415.406	4648941.236
43	488056.5845	4634982.938	525	488492.9912	4642376.477	1007	492442.7728	4648919.662
44	488071.9516	4635010.286	526	488468.5592	4642369.89	1008	492472.1111	4648908.575
45	488087.905	4635035.401	527	488438.5177	4642363.938	1009	492499.5374	4648898.1
46	488093.5384	4635056.754	528	488405.5859	4642365.655	1010	492530.5208	4648888.513
47	488099.2762	4635069.146	529	488352.2515	4642375.537	1011	492565.4171	4648869.11

48	488108.0556	4635084.933	530	488293.3812	4642379.752	1012	492585.2397	4648858.087
49	488129.1181	4635128.314	531	488262.4845	4642387.094	1013	492608.6524	4648854.053
50	488141.2451	4635145.262	532	488231.5143	4642400.738	1014	492643.5548	4648850.725
51	488158.3546	4635167.309	533	488213.1225	4642416.629	1015	492717.3356	4648847.351
52	488174.8746	4635191.87	534	488199.5664	4642438.179	1016	492762.2883	4648846.108
53	488185.256	4635214.399	535	488182.4769	4642462.489	1017	492793.796	4648844.624
54	488189.5478	4635230.695	536	488162.5949	4642486.066	1018	492810.584	4648851.568
55	488194.3867	4635248.117	537	488142.1008	4642519.239	1019	492832.6035	4648842.795
56	488196.3663	4635270.548	538	488132.8192	4642534.536	1020	492866.521	4648846.507
57	488196.9977	4635288.482	539	488117.9608	4642547.667	1021	492893.3569	4648832.216
58	488198.8277	4635299.707	540	488079.3624	4642554.92	1022	492908.7647	4648817.791
59	488209.3946	4635330.361	541	488057.584	4642560.968	1023	492925.3682	4648809.73
60	488216.4055	4635353.691	542	488035.0974	4642567.708	1024	492952.8538	4648794.177
61	488218.4372	4635371.641	543	488012.6597	4642578.831	1025	492977.1353	4648781.125
62	488216.3039	4635386.462	544	487974.9027	4642597.998	1026	492996.9429	4648770.562
63	488207.6541	4635407.649	545	487943.597	4642616.399	1027	493035.849	4648755.777
64	488187.9482	4635440.191	546	487917.961	4642628.985	1028	493064.5896	4648741.508
65	488167.9458	4635474.13	547	487877.474	4642638.637	1029	493090.1705	4648725.932
66	488152.7405	4635505.044	548	487845.8772	4642645.971	1030	493108.1846	4648705.823
67	488135.3141	4635534.252	549	487815.9016	4642653.244	1031	493133.7433	4648692.152
68	488129.0223	4635545.383	550	487807.9175	4642664.505	1032	493165.5693	4648685.539
69	488126.1336	4635552.912	551	487795.1922	4642674.86	1033	493191.0168	4648681.391
70	488122.8279	4635556.852	552	487780.3338	4642687.992	1034	493228.1444	4648655.79
71	488114.6648	4635561.902	553	487767.6412	4642695.546	1035	493233.5422	4648628.549
72	488107.5882	4635568.261	554	487746.6039	4642698.102	1036	493240.5959	4648608.943
73	488095.4607	4635575.403	555	487726.9668	4642700.674	1037	493255.4917	4648597.692
74	488080.7703	4635586.155	556	487702.8758	4642724.902	1038	493272.1471	4648585.187
75	488062.364	4635603.307	557	487687.1621	4642751.328	1039	493297.7279	4648569.611
76	488048.0738	4635627.79	558	487672.1077	4642781.263	1040	493318.8498	4648555.253
77	488038.9128	4635644.769	559	487669.1275	4642796.634	1041	493327.222	4648545.191
78	488023.8053	4635667.281	560	487661.2543	4642811.248	1042	493333.808	4648524.949
79	488007.2974	4635689.777	561	487659.6662	4642827.335	1043	493333.4104	4648504.625
80	487989.4447	4635707.496	562	487657.9801	4642851.824	1044	493329.2552	4648479.812
81	487983.7619	4635714.432	563	487671.5912	4642885.595	1045	493327.0046	4648455.022
82	487980.8732	4635721.961	564	487685.9761	4642913.072	1046	493322.3628	4648417.504
83	487980.1696	4635734.277	565	487694.2963	4642920.172	1047	493325.8337	4648392.145
84	487974.0501	4635754.653	566	487712.4758	4642922.485	1048	493328.566	4648375.668
85	487969.6241	4635773.929	567	487723.6212	4642927.517	1049	493337.0418	4648356.717
86	487963.0813	4635798.503	568	487735.4095	4642937.458	1050	493365.1772	4648339.902
87	487952.5937	4635839.574	569	487757.496	4642965.025	1051	493385.007	4648327.434
88	487945.5981	4635863.021	570	487778.7518	4643003.786	1052	493401.6994	4648311.754
89	487938.6147	4635933.525	571	487793.7796	4643036.173	1053	493410.6768	4648304.239
90	487934.9147	4635962.612	572	487796.2617	4643063.512	1054	493430.4622	4648295.58
91	487931.4887	4635968.174	573	487795.9596	4643089.418	1055	493443.2044	4648291.919
92	487926.9686	4635971.483	574	487788.0293	4643108.932	1056	493455.26	4648292.695
93	487922.6926	4635977.875	575	487778.0474	4643124.222	1057	493480.6037	4648297.436
94	487919.4194	4635994.363	576	487763.1155	4643143.654	1058	493499.0453	4648295.111
95	487914.8336	4636027.362	577	487757.2775	4643163.894	1059	493515.1587	4648284.992
96	487908.0878	4636101.51	578	487757.7653	4643182.106	1060	493530.5669	4648265.699
97	487907.8561	4636121.394	579	487768.6575	4643208.842	1061	493555.2955	4648241.541

98	487907.8491	4636146.043	580	487776.8389	4643227.844	1062	493567.9569	4648212.098
99	487908.3081	4636154.731	581	487790.5072	4643256.714	1063	493586.6725	4648186.283
100	487911.2583	4636165.97	582	487797.0678	4643294.604	1064	493603.402	4648167.429
101	487912.2252	4636179.146	583	487811.3628	4643329.784	1065	493629.7586	4648139.797
102	487908.8868	4636201.235	584	487826.5049	4643352.368	1066	493642.701	4648118.994
103	487905.0013	4636222.197	585	487840.2794	4643372.136	1067	493662.0591	4648092.551
104	487888.2912	4636262.057	586	487854.6397	4643401.714	1068	493688.26	4648078.252
105	487874.33	4636282.341	587	487862.1862	4643415.107	1069	493707.9564	4648077.212
106	487860.7598	4636293.107	588	487864.1887	4643423.533	1070	493745.9684	4648084.641
107	487832.5056	4636314.066	589	487863.3334	4643436.828	1071	493767.2137	4648080.506
108	487809.0712	4636330.039	590	487867.3955	4643448.779	1072	493794.6352	4648049.65
109	487792.779	4636339.172	591	487877.8162	4643455.904	1073	493804.2475	4648042.143
110	487777.0466	4636343.19	592	487891.0293	4643463.761	1074	493806.9279	4648030.109
111	487750.6588	4636348.205	593	487904.2261	4643473.018	1075	493812.8197	4648014.939
112	487717.2172	4636357.619	594	487918.7334	4643489.993	1076	493829.4602	4648003.703
113	487694.4375	4636365.476	595	487930.4809	4643503.435	1077	493846.7802	4647988.666
114	487661.8687	4636372.1	596	487945.6067	4643527.42	1078	493858.4751	4647965.943
115	487641.9256	4636376.909	597	487957.3052	4643545.062	1079	493868.8037	4647951.459
116	487635.1649	4636380.191	598	487965.4784	4643564.765	1080	493880.3356	4647942.704
117	487621.2788	4636394.035	599	487968.8158	4643578.809	1081	493899.4861	4647934.038
118	487607.3535	4636411.239	600	487973.4393	4643602.671	1082	493913.5426	4647926.582
119	487592.1094	4636421.425	601	487967.6829	4643615.909	1083	493922.5941	4647912.718
120	487579.1678	4636426.316	602	487961.1773	4643633.339	1084	493910.7387	4647894.801
121	487582.5574	4636447.923	603	487969.1464	4643670.545	1085	493893.2433	4647870.467
122	487589.1484	4636459.204	604	487983.2439	4643696.919	1086	493864.8881	4647851.722
123	487599.0871	4636471.644	605	488013.7241	4643725.285	1087	493851.7036	4647838.869
124	487606.7755	4636484.898	606	488040.5892	4643763.412	1088	493853.1512	4647823.646
125	487588.9685	4636498.696	607	488049.9912	4643797.834	1089	493862.8228	4647811.059
126	487565.788	4636516.912	608	488056.0476	4643818.912	1090	493871.7928	4647804.179
127	487550.8175	4636527.662	609	488059.4279	4643825.854	1091	493886.7732	4647771.97
128	487531.0141	4636544.517	610	488064.6698	4643856.726	1092	493894.5624	4647757.457
129	487513.6722	4636557.03	611	488069.15	4643880.867	1093	493914.3848	4647745.623
130	487487.9566	4636576.477	612	488075.0663	4643901.943	1094	493927.8731	4647732.446
131	487473.2791	4636586.11	613	488082.4442	4643941.804	1095	493917.2134	4647720.892
132	487454.8144	4636596.258	614	488087.0027	4643959.223	1096	493922.4555	4647706.984
133	487447.7133	4636604.719	615	488094.1537	4643970.511	1097	493929.5283	4647699.447
134	487441.0079	4636615.284	616	488100.1377	4643978.923	1098	493947.3868	4647692.67
135	487439.889	4636627.176	617	488101.4466	4643986.782	1099	493964.6251	4647684.617
136	487440.0826	4636634.601	618	488101.863	4643999.111	1100	493983.8646	4647668.332
137	487437.3111	4636644.092	619	488101.1689	4644010.587	1101	493993.5806	4647651.936
138	487431.1185	4636667.308	620	488099.6641	4644019.533	1102	494005.0828	4647645.721
139	487425.6342	4636681.249	621	488098.2049	4644024.557	1103	494033.1885	4647631.444
140	487418.5446	4636688.729	622	488108.7778	4644054.652	1104	494034.9895	4647608.606
141	487408.9963	4636690.859	623	488112.4668	4644074.582	1105	494049.5183	4647592.291
142	487405.3457	4636691.656	624	488115.2992	4644095.902	1106	494068.3299	4647581.056
143	487401.4347	4636690.771	625	488122.228	4644126.234	1107	494083.6562	4647573.615
144	487393.6941	4636681.997	626	488122.9506	4644136.326	1108	494107.9229	4647561.834
145	487388.523	4636669.053	627	488120.6186	4644144.142	1109	494111.8731	4647549.815
146	487386.0262	4636669.554	628	488119.6412	4644155.895	1110	494099.5061	4647412.516
147	487380.5014	4636674.951	629	488116.189	4644163.697	1111	494091.6009	4647374.337

148	487364.7783	4636702.218	630	488105.1032	4644177.573	1112	494077.545	4647315.079
149	487360.1273	4636715.899	631	488096.4498	4644199.04	1113	494092.3737	4647261.943
150	487357.5284	4636722.591	632	488093.0171	4644205.162	1114	494114.8344	4647187.277
151	487351.9954	4636728.689	633	488068.7031	4644224.485	1115	494131.4402	4647124.608
152	487346.5617	4636738.289	634	488059.8807	4644236.427	1116	494142.5914	4647039.651
153	487344.0507	4636749.463	635	488056.7151	4644243.672	1117	494152.7312	4646959.603
154	487342.2528	4636759.526	636	488058.0468	4644249.57	1118	494173.8956	4646803.516
155	487338.8056	4636766.908	637	488063.7419	4644265.602	1119	494209.5236	4646579.699
156	487334.4239	4636770.359	638	488069.0883	4644287.512	1120	494243.6186	4646381.088
157	487330.6251	4636771.855	639	488072.2988	4644300.434	1121	494246.3456	4646310.637
158	487325.457	4636770.674	640	488079.9249	4644319.01	1122	494233.8879	4646147.589
159	487321.4499	4636766.006	641	488081.7906	4644327.155	1123	494303.2066	4646088.176
160	487310.127	4636764.194	642	488080.8491	4644335.827	1124	494327.5678	4646040.842
161	487305.714	4636782.349	643	488075.6838	4644346.41	1125	494371.8604	4645965.731
162	487305.4549	4636792.569	644	488072.1826	4644358.414	1126	494429.9765	4645906.187
163	487307.6853	4636805.48	645	488069.7298	4644376.592	1127	494456.8461	4645866.785
164	487306.3435	4636812.467	646	488065.408	4644386.905	1128	494517.4549	4645773.658
165	487300.6215	4636822.764	647	488063.04	4644397.801	1129	494550.2507	4645723.622
166	487292.8431	4636829.256	648	488062.3427	4644409.557	1130	494569.1306	4645725.943
167	487282.852	4636833.341	649	488060.5512	4644419.06	1131	494589.4763	4645722.679
168	487275.2871	4636833.533	650	488059.333	4644427.449	1132	494604.335	4645709.547
169	487263.8469	4636829.758	651	488060.0948	4644434.18	1133	494621.5556	4645674.035
170	487256.7298	4636822.574	652	488063.0644	4644443.738	1134	494632.9951	4645653.861
171	487252.5713	4636823.885	653	488067.3984	4644456.393	1135	494673.9396	4645625.628
172	487247.0484	4636817.098	654	488074.2398	4644470.198	1136	494713.4104	4645603.68
173	487241.2617	4636808.908	655	488078.5281	4644486.774	1137	494737.9827	4645594.287
174	487235.2791	4636796.063	656	488080.3938	4644494.919	1138	494782.4053	4645571.162
175	487230.4142	4636780.881	657	488082.4546	4644510.348	1139	494808.197	4645542.057
176	487227.7101	4636760.543	658	488082.3598	4644518.47	1140	494829.4202	4645520.802
177	487226.7464	4636747.086	659	488078.8913	4644527.673	1141	494844.1098	4645462.151
178	487223.2737	4636732.621	660	488078.8227	4644533.554	1142	494878.9757	4645354.718
179	487218.5259	4636719.401	661	488083.485	4644544.642	1143	494931.6049	4645285.306
180	487215.0822	4636714.459	662	488086.0787	4644550.415	1144	495003.708	4645227.325
181	487210.204	4636712.441	663	488086.7184	4644555.604	1145	495069.9647	4645190.284
182	487198.1271	4636715.242	664	488086.7245	4644567.088	1146	495114.0285	4645134.777
183	487187.019	4636719.034	665	488086.8787	4644577.874	1147	495176.509	4645061.279
184	487177.8321	4636726.209	666	488088.0622	4644584.47	1148	495207.0768	4645030.724
185	487169.8843	4636735.22	667	488094.7291	4644626.963	1149	495230.7377	4644983.382
186	487163.7945	4636741.031	668	488099.7586	4644676.04	1150	495261.9698	4644947.333
187	487154.7917	4636744.428	669	488102.1345	4644712.48	1151	495290.987	4644921.061
188	487147.5996	4636748.685	670	488103.1836	4644742.603	1152	495321.3964	4644895.506
189	487143.0435	4636755.075	671	488105.6412	4644772.043	1153	495360.1669	4644873.55
190	487143.4278	4636758.16	672	488113.798	4644793.145	1154	495396.8125	4644853.67
191	487142.5582	4636760.671	673	488120.6035	4644810.031	1155	495424.2823	4644839.985
192	487139.8797	4636762.18	674	488130.9915	4644819.955	1156	495444.0095	4644829.712
193	487136.5108	4636762.841	675	488166.4544	4644841.377	1157	495455.9123	4644829.85
194	487084.6499	4636807.693	676	488190.0229	4644861.959	1158	495464.2817	4644832.749
195	487028.4976	4636879.165	677	488215.0651	4644876.256	1159	495479.7589	4644826.627
196	486986.0152	4636919.284	678	488269.9351	4644911.389	1160	495491.7842	4644816.264
197	486954.3696	4636930.82	679	488288.5262	4644926.451	1161	495515.8676	4644792.736

198	486908.884	4636928.189	680	488300.9689	4644940.321	1162	495514.004	4644772.406
199	486884.297	4636934.905	681	488308.6832	4644951.335	1163	495507.9067	4644754.829
200	486854.7519	4636946.465	682	488327.7527	4644973.405	1164	495494.0327	4644717.853
201	486830.2205	4636965.587	683	488342.9601	4644990.389	1165	495483.1159	4644693.216
202	486816.4036	4637009.541	684	488354.5234	4645007.61	1166	495477.0594	4644672.138
203	486821.3523	4637065.619	685	488366.9727	4645020.92	1167	495466.1344	4644648.202
204	486820.9689	4637098.526	686	488379.3958	4645036.47	1168	495457.9448	4644629.899
205	486828.2546	4637134.324	687	488391.1477	4645061.536	1169	495448.314	4644615.081
206	486832.0151	4637172.181	688	488409.2201	4645097.04	1170	495440.751	4644603.089
207	486828.1146	4637206.448	689	488423.6037	4645112.613	1171	495422.9224	4644570.669
208	486818.5966	4637242.05	690	488441.5856	4645131.87	1172	495418.8848	4644556.616
209	486803.4284	4637281.787	691	488457.6299	4645149.143	1173	495408.758	4644524.286
210	486794.5942	4637318.797	692	488466.7576	4645159.053	1174	495400.7235	4644492.681
211	486781.8935	4637327.052	693	488479.5719	4645165.085	1175	495395.3999	4644468.81
212	486750.4355	4637322.484	694	488488.7159	4645173.595	1176	495386.2673	4644411.282
213	486716.9423	4637312.291	695	488495.8309	4645187.963	1177	495386.545	4644387.476
214	486679.3134	4637296.447	696	488501.5293	4645203.715	1178	495385.4795	4644358.753
215	486641.758	4637274.302	697	488524.0598	4645241.231	1179	495393.0611	4644309.123
216	486614.452	4637273.983	698	488533.5483	4645268.231	1180	495408.9629	4644266.592
217	486600.3836	4637279.422	699	488546.2025	4645287.986	1181	495425.4506	4644233.872
218	486579.8915	4637295.289	700	488553.2946	4645304.315	1182	495451.0246	4644159.743
219	486557.2827	4637312.531	701	488560.4456	4645315.602	1183	495487.0375	4644074.03
220	486533.3456	4637320.135	702	488572.3703	4645351.574	1184	495497.1175	4644050.339
221	486516.8154	4637320.503	703	488582.5072	4645371.019	1185	495518.2472	4643979.859
222	486510.7455	4637312.589	704	488591.3777	4645378.966	1186	495505.3101	4643922.587
223	486506.0921	4637303.292	705	488596.3143	4645387.987	1187	495484.2523	4643806.798
224	486500.2695	4637298.182	706	488615.7837	4645423.786	1188	495462.5024	4643690.301
225	486491.3304	4637296.117	707	488638.4385	4645450.66	1189	495451.2121	4643637.649
226	486478.9196	4637303.535	708	488659.3017	4645487.037	1190	495432.5465	4643556.902
227	486486.9984	4637331.36	709	488673.9915	4645500.373	1191	495427.3617	4643521.128
228	486489.8637	4637349.879	710	488697.1256	4645510.166	1192	495390.0081	4643301.51
229	486489.1144	4637366.117	711	488728.655	4645520.618	1193	495375.8865	4643191.404
230	486486.0853	4637385.688	712	488776.4249	4645531.539	1194	495364.2226	4643110.738
231	486470.8668	4637417.722	713	488791.5516	4645531.435	1195	495361.3423	4643057.485
232	486463.0278	4637441.439	714	488823.1496	4645536.006	1196	495355.4512	4642962.18
233	486456.9632	4637481.143	715	488858.6065	4645545.943	1197	495355.5675	4642892.156
234	486453.6601	4637524.24	716	488884.5609	4645554.088	1198	495344.2771	4642839.504
235	486450.6697	4637564.539	717	488909.6555	4645563.905	1199	495343.3014	4642803.079
236	486452.1347	4637583.043	718	488935.6644	4645569.09	1200	495338.2798	4642753.302
237	486458.5951	4637605.526	719	488983.8282	4645582.256	1201	495331.3699	4642685.296
238	486461.2717	4637616.201	720	489041.7044	4645603.239	1202	495331.7619	4642651.688
239	486461.4571	4637624.326	721	489127.5868	4645624.548	1203	495337.9041	4642545.32
240	486467.8588	4637651.85	722	489206.5576	4645638.074	1204	495332.3829	4642468.897
241	486476.2634	4637675.757	723	489272.2254	4645651.445	1205	495334.8018	4642441.615
242	486483.6456	4637691.248	724	489312.1099	4645654.011	1206	495360.558	4642355.263
243	486490.8391	4637698.895	725	489368.9289	4645645.571	1207	495372.2791	4642334.952
244	486496.6616	4637704.004	726	489444.1481	4645620.539	1208	495381.0766	4642301.992
245	486503.0084	4637712.201	727	489485.6208	4645607.018	1209	495381.1713	4642293.87
246	486513.7742	4637725.772	728	489572.6855	4645587.026	1210	495382.4288	4642282.121
247	486520.8763	4637741.26	729	489621.762	4645581.997	1211	495380.6087	4642270.055

248	486523.1945	4637758.653	730	489708.5734	4645583.71	1212	495379.0394	4642260.513
249	486526.7146	4637769.058	731	489734.3894	4645591.714	1213	495377.4994	4642248.45
250	486532.7421	4637780.612	732	489769.9913	4645601.233	1214	495379.8738	4642236.994
251	486534.5818	4637790.997	733	489790.9062	4645609.179	1215	495388.1721	4642221.965
252	486533.2527	4637808.908	734	489807.6692	4645612.876	1216	495395.3436	4642207.483
253	486531.2173	4637815.327	735	489823.0073	4645618.657	1217	495401.9255	4642195.515
254	486531.6371	4637827.376	736	489837.5718	4645630.731	1218	495402.1218	4642183.833
255	486534.8542	4637839.738	737	489856.2963	4645646.355	1219	495399.4354	4642173.998
256	486539.7256	4637854.36	738	489891.7675	4645667.077	1220	495398.9537	4642167.27
257	486547.1176	4637869.011	739	489927.8572	4645694.808	1221	495399.0451	4642159.428
258	486550.6377	4637879.416	740	489879.9554	4645727.761	1222	495401.0808	4642153.01
259	486550.5039	4637890.898	741	489851.0937	4645740.729	1223	495403.9597	4642146.321
260	486550.0704	4637904.058	742	489822.8505	4645760.707	1224	495408.4996	4642141.332
261	486547.1752	4637912.147	743	489798.0263	4645787.727	1225	495414.7361	4642134.962
262	486544.3093	4637917.715	744	489775.823	4645830.184	1226	495419.0057	4642129.13
263	486542.4984	4637928.898	745	489743.052	4645878.119	1227	495423.0246	4642120.773
264	486546.7836	4637945.754	746	489707.701	4645907.117	1228	495424.5262	4642112.108
265	486549.9126	4637965.678	747	489662.5559	4645935.301	1229	495428.0993	4642093.943
266	486551.674	4637982.784	748	489545.2267	4646028.466	1230	495428.6145	4642073.781
267	486550.1295	4638019.179	749	489494.5212	4646053.083	1231	495431.9009	4642056.173
268	486548.5008	4638038.767	750	489464.0304	4646085.639	1232	495431.1816	4642045.801
269	486548.9108	4638051.657	751	489442.064	4646107.791	1233	495426.5804	4642032.022
270	486554.9025	4638066.292	752	489415.9866	4646122.192	1234	495425.0176	4642021.92
271	486560.4175	4638078.9	753	489386.5473	4646124.65	1235	495424.5163	4642016.872
272	486562.5047	4638092.089	754	489366.1692	4646130.714	1236	495422.1589	4642002.839
273	486559.4887	4638110.541	755	489329.5649	4646147.093	1237	495420.0654	4641990.21
274	486557.0981	4638123.398	756	489290.8193	4646166.948	1238	495419.0986	4641977.034
275	486557.2574	4638133.763	757	489271.7925	4646177.23	1239	495420.4398	4641972.678
276	486560.1194	4638152.563	758	489253.3514	4646197.322	1240	495425.784	4641970.779
277	486561.6562	4638164.905	759	489229.5732	4646215.291	1241	495432.4276	4641965.535
278	486571.728	4638189.952	760	489210.3361	4646231.593	1242	495441.5138	4641954.997
279	486579.5593	4638214.972	761	489191.718	4646242.86	1243	495445.9267	4641948.886
280	486586.8991	4638234.104	762	489154.716	4646269.318	1244	495450.3575	4641941.235
281	486592.5389	4638254.897	763	489111.7901	4646299.348	1245	495450.9977	4641934.38
282	486594.2872	4638273.124	764	489035.7015	4646362.883	1246	495451.5027	4641927.103
283	486592.7694	4638283.19	765	488992.3551	4646404.953	1247	495453.2435	4641921.941
284	486593.9837	4638299.17	766	488985.5519	4646411.876	1248	495456.9448	4641916.802
285	486595.7353	4638317.117	767	488979.5826	4646417.834	1249	495459.9279	4641913.196
286	486596.2752	4638342.892	768	488986.184	4646453.717	1250	495466.6936	4641909.493
287	486594.5518	4638370.602	769	488990.3911	4646474.085	1251	495472.7493	4641906.623
288	486590.9071	4638394.928	770	488990.2577	4646485.513	1252	495477.8526	4641901.36
289	486586.1553	4638418.121	771	488990.1614	4646493.766	1253	495483.1073	4641895.119
290	486579.6904	4638444.095	772	489001.9612	4646504.592	1254	495488.9434	4641887.064
291	486576.9577	4638462.269	773	489003.5373	4646516.006	1255	495505.5379	4641869.191
292	486575.6123	4638481.581	774	489005.5061	4646530.264	1256	495513.323	4641862.139
293	486578.5689	4638492.259	775	489011.4567	4646536.355	1257	495532.8178	4641840.048
294	486583.4403	4638506.881	776	489013.598	4646553.092	1258	495546.2483	4641829.281
295	486586.3905	4638518.119	777	489021.7256	4646563.981	1259	495562.4958	4641817.146
296	486588.1486	4638535.506	778	489036.7999	4646578.127	1260	495569.413	4641812.464
297	486587.8548	4638552.128	779	489048.1019	4646589.053	1261	495584.1822	4641794.99

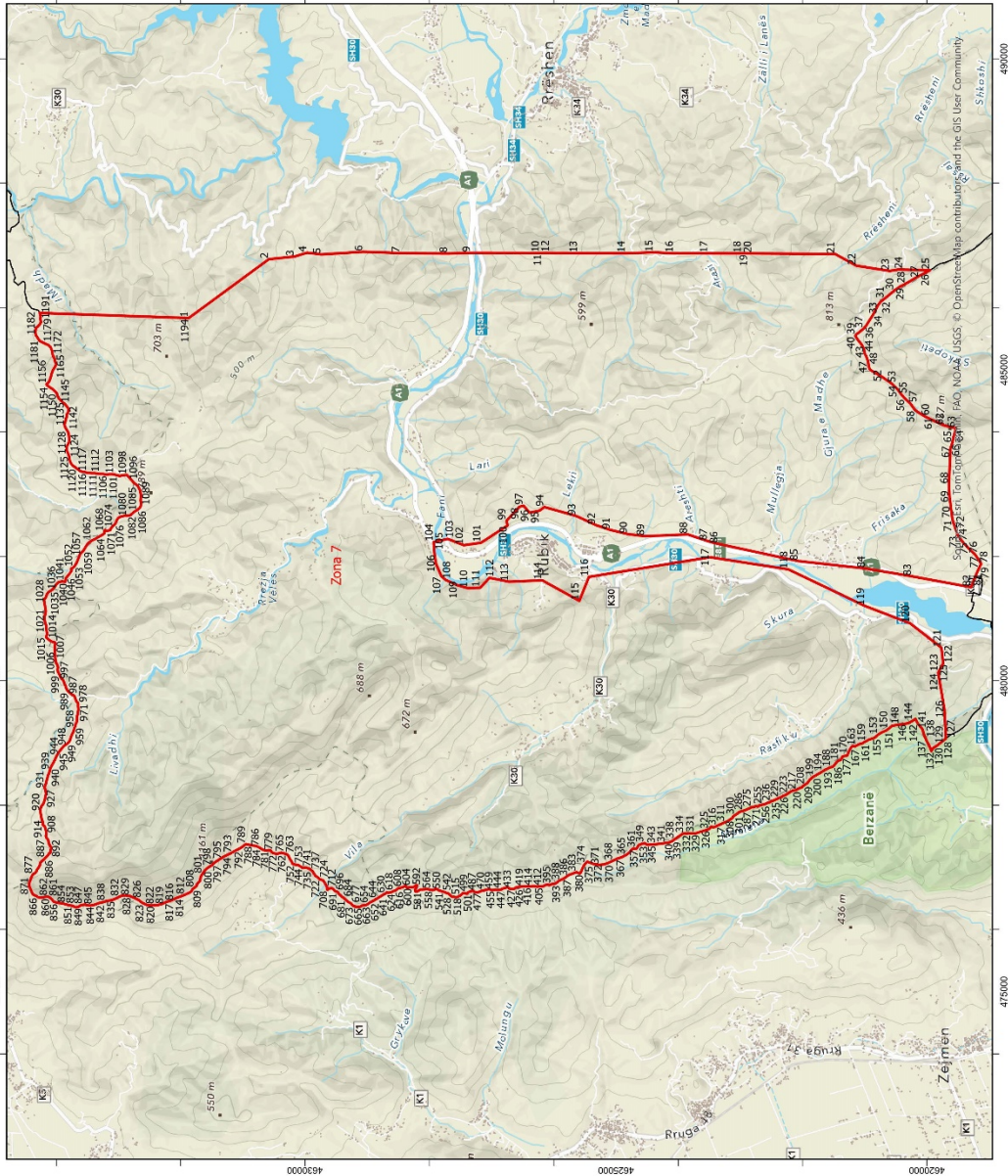
298	486623.279	4638564.866	780	489051.8296	4646596.081	1262	495600.6807	4641773.334
299	486631.6026	4638571.685	781	489063.3836	4646606.16	1263	495607.5428	4641761.37
300	486644.0846	4638582.194	782	489057.9488	4646615.837	1264	495615.2809	4641746.334
301	486652.8997	4638594.901	783	489059.0852	4646627.28	1265	495618.7331	4641738.531
302	486660.5097	4638614.877	784	489059.0037	4646634.263	1266	495620.5605	4641725.948
303	486671.5255	4638655.06	785	489047.4203	4646647.463	1267	495624.9444	4641710.313
304	486679.8386	4638686.808	786	489035.8886	4646656.218	1268	495632.6074	4641701.719
305	486687.5492	4638722.19	787	489030.5649	4646677.109	1269	495645.8554	4641694.591
306	486695.009	4638755.049	788	489033.5023	4646697.463	1270	495655.7623	4641685.743
307	486696.3239	4638786.435	789	489042.1091	4646721.692	1271	495673.0586	4641667.738
308	486699.4934	4638823.486	790	489052.0228	4646742.762	1272	495682.7017	4641657.487
309	486713.707	4638865.666	791	489068.2557	4646766.445	1273	495696.2428	4641649.242
310	486737.0717	4638903.752	792	489082.0082	4646785.02	1274	495712.3014	4641641.306
311	486771.6469	4638941.268	793	489102.6581	4646805.491	1275	495721.6023	4641636.372
312	486833.4548	4638985.404	794	489122.0778	4646833.746	1276	495728.3501	4641634.21
313	486897.9735	4639037.274	795	489128.2489	4646849.057	1277	495755.5002	4641635.927
314	486952.845	4639075.727	796	489126.0774	4646871.89	1278	495767.5137	4641638.588
315	486990.4494	4639093.671	797	489123.8838	4646896.629	1279	495789.0495	4641641.36
316	487024.5938	4639108.074	798	489123.7208	4646910.596	1280	495800.2815	4641638.97
317	487057.9564	4639129.471	799	489121.2086	4646962.635	1281	495819.9777	4641631.357
318	487088.4776	4639154.335	800	489124.1904	4646979.179	1282	495840.2372	4641623.47
319	487110.6541	4639174.201	801	489109.099	4647020.911	1283	495883.5667	4641606.889
320	487130.673	4639198.943	802	489090.1687	4647065.138	1284	495909.9844	4641599.354
321	487158.4017	4639223.074	803	489083.5086	4647091.729	1285	495920.593	4641594.666
322	487195.1917	4639250.813	804	489090.9717	4647105.151	1286	495931.6234	4641585.551
323	487232.0632	4639271.55	805	489100.3764	4647115.42	1287	495944.0933	4641573.092
324	487267.6161	4639285.269	806	489112.9999	4647121.917	1288	495959.074	4641561.502
325	487301.8666	4639290.57	807	489130.0456	4647130.37	1289	495985.0001	4641548.079
326	487353.5475	4639302.376	808	489137.6123	4647134.903	1290	496006.1586	4641535.161
327	487412.2055	4639316.365	809	489152.7014	4647147.779	1291	496019.3708	4641531.113
328	487480.6657	4639330.467	810	489174.8334	4647155.657	1292	496032.7813	4641534.071
329	487530.9871	4639338.757	811	489194.3963	4647166.045	1293	496041.7239	4641535.855
330	487560.361	4639341.9	812	489210.8367	4647176.892	1294	496048.4487	4641535.654
331	487594.636	4639345.1	813	489218.3657	4647184.049	1295	496052.9625	4641532.905
332	487670.6967	4639359.392	814	489227.0856	4647192.338	1296	496054.6984	4641528.164
333	487719.5607	4639372.566	815	489236.1667	4647200.97	1297	496039.7576	4641512.304
334	487757.2059	4639387.009	816	489245.6332	4647209.968	1298	496025.061	4641499.528
335	487787.1249	4639403.464	817	489257.0027	4647220.775	1299	496009.5144	4641487.582
336	487819.0954	4639424.144	818	489264.0239	4647239.244	1300	496004.8186	4641481.925
337	487849.6366	4639443.867	819	489291.4726	4647255.572	1301	496001.5067	4641477.685
338	487853.1174	4639457.632	820	489310.6127	4647273.441	1302	496002.9789	4641471.54
339	487857.2041	4639467.483	821	489323.7304	4647292.009	1303	496009.1959	4641466.85
340	487862.4111	4639477.347	822	489330.5585	4647305.423	1304	496022.9747	4641462.249
341	487874.7397	4639501.02	823	489343.5206	4647337.323	1305	496030.9015	4641455.059
342	487884.8996	4639518.504	824	489354.793	4647350.789	1306	496036.5648	4641449.803
343	487889.504	4639532.003	825	489373.6172	4647370.058	1307	496042.5834	4641438.109
344	487888.7741	4639546.56	826	489414.1758	4647376.881	1308	496050.2562	4641428.675
345	487902.1724	4639600.335	827	489438.8548	4647384.154	1309	496058.5121	4641417.287
346	487905.9734	4639634.692	828	489465.689	4647383.696	1310	496072.3823	4641404.844
347	487906.117	4639742.532	829	489524.4162	4647397.852	1311	496087.3924	4641390.733

348	487894.2127	4639802.615	830	489568.1122	4647407.886	1312	496092.7855	4641384.634
349	487881.7224	4639852.887	831	489598.5051	4647415.226	1313	496078.9878	4641366.826
350	487871.7553	4639926.998	832	489620.7262	4647415.485	1314	496073.2109	4641357.796
351	487862.2044	4639965.4	833	489639.1452	4647415.065	1315	496064.3402	4641349.849
352	487864.3358	4640022.846	834	489660.7685	4647412.142	1316	496053.8217	4641339.083
353	487870.6927	4640078.239	835	489684.237	4647414.321	1317	496043.5637	4641330
354	487882.969	4640106.393	836	489704.4496	4647423.447	1318	496031.3191	4641323.134
355	487892.5019	4640129.612	837	489723.146	4647440.565	1319	496024.6857	4641315.494
356	487909.7691	4640150.12	838	489736.9148	4647448.426	1320	496013.8741	4641305.845
357	487938.2796	4640167.259	839	489773.2305	4647469.16	1321	496006.1334	4641297.071
358	487962.63	4640180.848	840	489806.3823	4647503.373	1322	495993.554	4641270.875
359	488012.2513	4640189.129	841	489830.8168	4647531.597	1323	495982.3586	4641246.095
360	488057.0042	4640194.552	842	489852.2473	4647545.182	1324	495974.2244	4641223.031
361	488102.5062	4640195.783	843	489859.7474	4647555.429	1325	495957.0963	4641183.697
362	488141.6333	4640203.241	844	489872.8355	4647576.536	1326	495937.7569	4641136.694
363	488182.0628	4640219.118	845	489891.5931	4647601.518	1327	495913.4807	4641080.67
364	488215.5805	4640227.212	846	489905.405	4647615.014	1328	495882.0918	4641034.087
365	488243.448	4640239.441	847	489927.5815	4647619.083	1329	495840.7379	4640970.591
366	488273.4568	4640248.194	848	489952.4087	4647613.658	1330	495836.6872	4640964.372
367	488285.823	4640268.645	849	489998.3281	4647596.415	1331	495824.8565	4640946.027
368	488284.8616	4640291.042	850	490032.0289	4647592.363	1332	495816.9174	4640930.248
369	488283.1512	4640317.631	851	490065.0282	4647594.018	1333	495812.4338	4640906.387
370	488278.0216	4640337.179	852	490102.8398	4647618.589	1334	495808.5789	4640876.651
371	488273.5431	4640360.935	853	490127.1854	4647654.431	1335	495797.9733	4640854.479
372	488278.9975	4640373.603	854	490140.0882	4647691.41	1336	495788.9531	4640835.327
373	488299.7491	4640395.553	855	490141.6742	4647718.733	1337	495782.6357	4640824.609
374	488320.948	4640439.216	856	490131.8396	4647745.287	1338	495773.9412	4640801.539
375	488322.8036	4640460.245	857	490131.0195	4647761.151	1339	495779.0086	4640799.358
376	488322.4934	4640486.851	858	490137.8922	4647770.756	1340	495784.9161	4640797.186
377	488326.3679	4640514.906	859	490132.6277	4647786.569	1341	495789.1759	4640792.194
378	488342.886	4640539.607	860	490136.9386	4647798.049	1342	495790.7231	4640779.607
379	488362.0986	4640573.443	861	490150.7875	4647808.37	1343	495791.9348	4640771.778
380	488372.2826	4640600.872	862	490171.0001	4647817.496	1344	495795.641	4640766.219
381	488383.1668	4640628.309	863	490197.5617	4647826.695	1345	495801.8286	4640764.05
382	488387.6679	4640662.674	864	490221.6292	4647830.807	1346	495804.955	4640760.165
383	488395.0758	4640687.969	865	490237.3223	4647847.479	1347	495806.4206	4640754.58
384	488403.0696	4640723.075	866	490258.1698	4647856.612	1348	495812.1134	4640746.804
385	488416.5585	4640767.348	867	490284.1262	4647863.264	1349	495819.4245	4640744.368
386	488427.8898	4640816.497	868	490312.0093	4647868.034	1350	495825.3386	4640741.636
387	488436.5184	4640857.213	869	490338.6819	4647867.711	1351	495829.0284	4640737.477
388	488450.0318	4640899.385	870	490361.3959	4647846.796	1352	495831.9205	4640729.668
389	488463.6595	4640931.756	871	490377.4124	4647813.555	1353	495836.6954	4640704.514
390	488485.1358	4640951.613	872	490382.8028	4647786.949	1354	495840.9624	4640674.873
391	488518.5392	4640969.509	873	490379.8433	4647768.501	1355	495844.1705	4640663.986
392	488534.4959	4640982.299	874	490381.9184	4647753.92	1356	495846.2681	4640652.246
393	488549.6545	4641003.484	875	490374.4776	4647738.594	1357	495848.4538	4640632.945
394	488561.0424	4641020.323	876	490371.3995	4647730.303	1358	495849.3568	4640603.544
395	488566.8029	4641030.754	877	490371.607	4647712.527	1359	495851.5458	4640583.962
396	488567.0111	4641036.918	878	490379.522	4647687.22	1360	495850.8884	4640568.269
397	488563.3115	4641041.917	879	490381.0734	4647663.109	1361	495852.6621	4640559.825

398	488557.4498	4641040.168	880	490381.1697	4647654.856	1362	495856.5231	4640541.444
399	488546.0815	4641030.232	881	490392.8644	4647632.133	1363	495860.8162	4640509.562
400	488534.1367	4641021.689	882	490405.0829	4647618.941	1364	495865.9104	4640481.051
401	488526.3178	4641019.638	883	490428.7812	4647601.439	1365	495868.0086	4640445.222
402	488516.7794	4641020.927	884	490463.3097	4647580.888	1366	495873.5265	4640404.391
403	488509.452	4641024.763	885	490493.8657	4647574.26	1367	495883.9049	4640369.233
404	488504.8992	4641030.872	886	490516.1016	4647573.249	1368	495900.291	4640343.08
405	488499.6785	4641046.217	887	490543.4388	4647570.393	1369	495922.225	4640311.684
406	488491.6278	4641064.049	888	490576.3121	4647582.842	1370	495930.8001	4640296.938
407	488474.2664	4641087.655	889	490597.1671	4647591.339	1371	495942.7026	4640266.205
408	488468.577	4641095.152	890	490619.3437	4647595.408	1372	495971.6684	4640208.281
409	488467.0396	4641106.898	891	490634.6995	4647585.428	1373	495982.2921	4640185.997
410	488464.577	4641125.916	892	490647.7826	4647552.562	1374	495995.1465	4640164.578
411	488459.2975	4641146.302	893	490656.8933	4647533.619	1375	496005.1512	4640147.328
412	488455.233	4641158.579	894	490668.5214	4647516.611	1376	496029.5895	4640117.362
413	488456.3862	4641160.913	895	490687.1702	4647496.509	1377	496051.3056	4640080.641
414	488466.1068	4641168.029	896	490695.6091	4647480.733	1378	496097.4298	4640040.564
415	488471.0761	4641174.249	897	490700.3052	4647459.199	1379	496125.4176	4640018.481
416	488468.7278	4641183.465	898	490716.4737	4647433.989	1380	496133.3379	4640011.851
417	488455.5609	4641207.681	899	490733.7565	4647422.126	1381	496161.4203	4639981.647
418	488449.8903	4641237.585	900	490750.2636	4647422.318	1382	496195.7165	4639947.034
419	488445.7369	4641281.513	901	490769.2731	4647425.715	1383	496220.4447	4639916.23
420	488442.3656	4641306.402	902	490787.6497	4647430.581	1384	496221.6466	4639909.242
421	488443.156	4641334.702	903	490835.4539	4647435.926	1385	496224.5942	4639896.671
422	488443.3113	4641369.436	904	490865.8365	4647441.148	1386	496228.9878	4639880.196
423	488440.2102	4641395.169	905	490872.965	4647463.754	1387	496239.6799	4639852.03
424	488435.9367	4641425.37	906	490872.7575	4647481.531	1388	496269.2966	4639810.36
425	488438.9717	4641429.327	907	490882.6562	4647503.87	1389	496283.1896	4639795.956
426	488452.3559	4641434.525	908	490897.7306	4647518.016	1390	496298.1311	4639787.727
427	488483.1073	4641439.645	909	490921.0139	4647536.067	1391	496304.0158	4639787.516
428	488518.623	4641444.541	910	490941.2933	4647539.478	1392	496306.2531	4639787.822
429	488536.4915	4641449.511	911	490966.039	4647541.037	1393	496308.2135	4639787.845
430	488550.7355	4641453.038	912	491004.9229	4647533.954	1394	496311.0469	4639785.077
431	488559.4044	4641454.26	913	491016.6078	4647560.677	1395	496314.74	4639780.638
432	488570.0795	4641451.583	914	491028.8535	4647599.553	1396	496318.7001	4639777.323
433	488587.7854	4641446.468	915	491047.0874	4647615.005	1397	496323.1844	4639777.095
434	488601.7984	4641445.791	916	491076.4627	4647600.744	1398	496328.2289	4639776.874
435	488619.3574	4641453.278	917	491096.448	4647574.943	1399	496335.2469	4639775.555
436	488641.0587	4641465.856	918	491107.456	4647556.657	1400	496352.3235	4639760.949
437	488664.1275	4641481.25	919	491134.8451	4647549.357	1401	496367.2147	4639745.016
438	488679.1236	4641492.349	920	491163.2521	4647563.658	1402	496377.807	4639737.437
439	488686.0664	4641497.471	921	491193.4525	4647587.505	1403	496394.6763	4639732.031
440	488717.5012	4641516.045	922	491221.8298	4647604.345	1404	496411.5375	4639727.326
441	488753.0848	4641539.148	923	491240.0414	4647621.702	1405	496427.6658	4639725.413
442	488782.8948	4641552.94	924	491258.1938	4647644.138	1406	496447.2787	4639724.941
443	488808.8231	4641563.326	925	491277.1812	4647649.44	1407	496458.4814	4639725.072
444	488827.5357	4641573.326	926	491328.1131	4647637.969	1408	496471.0844	4639725.219
445	488830.2573	4641574.78	927	491354.2768	4647626.845	1409	496485.8288	4639721.889
446	488839.9387	4641585.257	928	491385.6013	4647608.797	1410	496501.2569	4639719.968
447	488850.7371	4641596.026	929	491401.8935	4647627.401	1411	496511.1001	4639716.582

448	488864.3132	4641608.789	930	491408.0348	4647645.252	1412	496525.3238	4639697.84
449	488880.7651	4641615.143	931	491416.6491	4647668.847	1413	496537.4715	4639676.974
450	488893.3059	4641620.611	932	491431.6196	4647691.88	1414	496544.0505	4639653.242
451	488920.8819	4641633.817	933	491464.493	4647704.329	1415	496555.8326	4639603.66
452	488940.6129	4641647.212	934	491482.6158	4647729.304	1416	496560.5069	4639563.1
453	488952.1959	4641662.753	935	491496.8848	4647758.045	1417	496562.9991	4639529.516
454	488961.2388	4641679.944	936	491516.4107	4647771.607	1418	496561.8436	4639508.495
455	488970.8843	4641693.502	937	491548.6639	4647782.778	1419	496555.9093	4639476.914
456	488975.5245	4641703.92	938	491608.4176	4647777.126	1420	496545.0248	4639449.476
457	488976.6897	4641724.101	939	491629.7741	4647797.059	1421	496537.6657	4639419.98
458	488976.5526	4641735.863	940	491655.4562	4647827.203	1422	496534.5321	4639388.431
459	488979.1899	4641749.899	941	491675.5874	4647843.312	1423	496536.8774	4639367.451
460	488984.9374	4641761.45	942	491719.3131	4647850.807	1424	496537.1957	4639340.144
461	488994.1011	4641768.279	943	491755.4574	4647855.039	1425	496535.3237	4639320.515
462	489008.3059	4641775.168	944	491794.7464	4647861.847	1426	496524.5861	4639280.475
463	489027.0244	4641779.307	945	491809.9541	4647864.565	1427	496516.5431	4639249.569
464	489034.827	4641782.759	946	491837.0023	4647886.47	1428	496494.7987	4639192.595
465	489042.0401	4641788.726	947	491856.3726	4647913.365	1429	496482.5955	4639158.14
466	489044.4431	4641798.837	948	491870.7676	4647931.312	1430	496474.4628	4639134.936
467	489065.6193	4641832.416	949	491884.6017	4647942.903	1431	496467.0057	4639113.841
468	489083.9402	4641846.635	950	491902.433	4647958.482	1432	496455.9744	4639099.007
469	489097.3016	4641853.793	951	491900.0071	4647983.086	1433	496455.4923	4639098.396
470	489111.5195	4641859.561	952	491898.3742	4648014.181	1434	496441.483	4639080.632
471	489165.0862	4641882.954	953	491894.933	4648037	1435	496425.0135	4639051.729
472	489202.4223	4641896.454	954	491903.9375	4648081.553	1436	496417.532	4639032.734
473	489220.7824	4641907.312	955	491931.2155	4648083.777	1437	496409.489	4639001.829
474	489236.0063	4641922.895	956	491957.8734	4648084.723	1438	496404.0998	4638983.56
475	489243.1116	4641938.103	957	491986.4434	4648085.056	1439	496394.5586	4638961.04
476	489260.1587	4641965.472	958	492007.9777	4648089.753	1440	496392.0272	4638937.902
477	489273.1094	4641983.829	959	492031.9553	4648102.732	1441	496394.2827	4638924.623
478	489284.4451	4641996.566	960	492053.2376	4648129.014	1442	496400.7066	4638914.194
479	489301.4538	4642003.207	961	492064.3618	4648155.178	1443	496401.2868	4638910.28
480	489319.524	4642014.902	962	492087.6304	4648174.499	1444	496402.9866	4638898.815
481	489337.8874	4642025.48	963	492104.5649	4648192.476	1445	496140.8851	4638889.398
482	489361.0346	4642034.152	964	492123.3226	4648217.459	1446	496031.6851	4638435.998

ZONA ME PËRPARËSI ZHVILLIMIN E EKONOMISË MALORE
ZONA 7, NJËSIA ADMINISTRATIVE RUBIK, BASHKIA MIRDITË, QARKU LEZHË



BASHKIA MIRDITË

Njësia Administrative	Zona	Sipërfaqja (ha)
Fan	Zona 1	17088
Kthellë dhe Rrëshen	Zona 2	1470
Orosht dhe Fan	Zona 3	9078
Rrëshen, Kthellë dhe Sellitë	Zona 4	19731
Rrëshen dhe Orosht	Zona 5	1565
Kaçnar, Orosht dhe Rrëshen	Zona 6	10599
Rubik	Zona 7	12563



1:60,000



- Legjendë**
- Zona me përparësi zhvillimin e ekonomisë malore
 - Bashkia Mirditë
 - Nderëtesa
 - Izoipse
- Kategoritë e Rrjetit Rrugor**
- B. Rruge Interurbane Kryesore
 - Kategoria C. Rruge Interurbane Dytësore
 - D. Rruge Urbane Kryesore
 - E. Rruge Urbane Dytësore
 - Kategoria F. Rruge Lokale

*Zona 7 në territorin e Njësia Administrative Rubik me sipërfaqe prej 12563 ha
 **Shënim Koordinatave: KRGUSH (Komiza Referencë Gjeodezike Shqiptare) EPSG: 8870

Zona 7
Njësia Administrative Rubik

Nr.	Koordinata X	Koordinata Y	Nr.	Koordinata X	Koordinata Y	Nr.	Koordinata X	Koordinata Y
1	485830.6554	4631870.204	399	476717.195	4626091.193	797	477035.067	4631492.382
2	486777.246	4630581.327	400	476723.0762	4626091.262	798	477011.5909	4631532.622
3	486819.246	4630168.327	401	476725.2776	4626094.649	799	476985.2293	4631571.529
4	486882.246	4629965.327	402	476716.2115	4626127.594	800	476951.1825	4631608.945
5	486854.246	4629734.327	403	476709.8386	4626145.726	801	476893.2902	4631649.585
6	486896.246	4629062.327	404	476701.818	4626161.038	802	476845.3629	4631676.337
7	486875.246	4628467.327	405	476691.3093	4626173.52	803	476805.349	4631684.974
8	486868.246	4627697.327	406	476690.2477	4626192.554	804	476777.9865	4631689.557
9	486879.9215	4627331.742	407	476690.2803	4626213.842	805	476756.697	4631713.817
10	486877.1948	4626227.005	408	476689.7234	4626237.643	806	476725.5975	4631738.664
11	486876.9148	4626201.525	409	476689.3098	4626249.122	807	476695.3855	4631747.415
12	486877.4748	4626144.405	410	476685.7701	4626264.486	808	476671.1978	4631780.045
13	486874.3215	4625616.392	411	476686.5028	4626273.738	809	476644.2094	4631812.642
14	486872.7148	4624847.445	412	476692.4718	4626290.333	810	476613.9404	4631826.294
15	486886.7148	4624399.445	413	476696.4324	4626312.766	811	476595.4434	4631851.287
16	486872.7148	4624070.445	414	476696.6277	4626344.139	812	476557.3825	4631932.772
17	486871.7794	4623518.433	415	476692.0784	4626374.056	813	476524.9227	4632014.321
18	486871.2196	4622982.451	416	476691.8472	4626393.94	814	476504.6668	4632070.104
19	486870.6596	4622886.691	417	476693.521	4626418.608	815	476463.7238	4632158.557
20	486870.6935	4622814.809	418	476691.7755	4626448.278	816	476446.8871	4632221.382
21	486858.9645	4621474.176	419	476692.1988	4626484.134	817	476429.6681	4632256.894
22	486672.2712	4621133.517	420	476687.8123	4626524.137	818	476407.4014	4632304.951
23	486588.2712	4620597.317	421	476689.2973	4626540.96	819	476392.6895	4632365.7
24	486610.3477	4620460.653	422	476685.3308	4626568.923	820	476387.9589	4632411.16
25	486600.6402	4619949.794	423	476679.404	4626596.863	821	476387.0786	4632486.775
26	486556.2744	4620033.429	424	476671.3052	4626618.897	822	476390.7008	4632536.534
27	486465.3752	4620202.825	425	476662.5323	4626626.637	823	476413.9105	4632587.921
28	486381.1472	4620344.772	426	476654.5474	4626638.869	824	476434.4746	4632625.973
29	486334.5591	4620436.339	427	476653.2839	4626651.178	825	476469.6845	4632669.098
30	486273.1757	4620525.616	428	476651.7598	4626661.804	826	476491.5918	4632712.067
31	486140.0691	4620682.876	429	476652.0523	4626675.362	827	476505.2441	4632742.336
32	486099.1673	4620740.63	430	476651.6143	4626700.985	828	476527.0617	4632793.007
33	486032.9584	4620789.62	431	476655.7207	4626709.156	829	476539.3626	4632819.059
34	485884.9079	4620866.244	432	476656.8832	4626717.572	830	476545.5734	4632887.054
35	485772.9102	4620937.994	433	476660.5923	4626723.777	831	476546.4601	4632931.179
36	485711.0707	4620975.389	434	476669.6176	4626730.464	832	476526.2041	4632986.962
37	485660.8017	4621019.27	435	476674.1848	4626735.139	833	476505.4843	4633022.433
38	485594.2361	4621098.959	436	476675.6909	4626738.098	834	476491.0821	4633056.576
39	485562.9966	4621145.179	437	476676.4789	4626742.588	835	476475.9472	4633093.513
40	485541.7639	4621150.226	438	476674.9061	4626745.371	836	476470.8424	4633110.959
41	485522.8327	4621139.419	439	476677.5489	4626755.525	837	476461.8131	4633164.772
42	485455.6381	4621090.996	440	476671.4463	4626774.5	838	476452.8816	4633210.183
43	485399.6584	4621045.9	441	476666.8025	4626788.451	839	476440.5472	4633247.152
44	485336.8207	4621014.945	442	476665.5716	4626797.96	840	476430.9807	4633286.954
45	485254.6984	4620997.984	443	476656.0431	4626822.497	841	476419.3138	4633326.732
46	485217.6942	4620977.068	444	476650.3706	4626835.979	842	476402.6971	4633370.653
47	485149.1705	4620951.922	445	476644.5151	4626846.081	843	476391.7955	4633404.837

48	485075.7113	4620937.955	446	476639.5473	4626851.765	844	476383.4826	4633457.258
49	485030.8574	4620929.373	447	476636.2599	4626857.469	845	476388.5783	4633500.732
50	485001.4022	4620913.15	448	476635.6347	4626863.064	846	476398.6565	4633537.262
51	484971.2326	4620867.275	449	476634.2181	4626876.492	847	476394.6667	4633579.229
52	484882.9643	4620719.09	450	476634.4916	4626889.099	848	476383.0161	4633617.606
53	484778.8297	4620569.662	451	476634.1268	4626896.377	849	476360.2529	4633648.152
54	484679.4468	4620466.872	452	476636.6457	4626908.591	850	476354.9199	4633685.202
55	484600.6941	4620410.904	453	476636.5122	4626920.073	851	476378.8133	4633737.998
56	484535.7396	4620351.921	454	476633.9493	4626935.729	852	476391.4149	4633798.365
57	484456.2604	4620267.36	455	476634.2815	4626952.95	853	476402.022	4633849.605
58	484358.6257	4620196.352	456	476633.8043	4626972.279	854	476414.917	4633884.767
59	484323.1388	4620152.532	457	476631.5296	4626987.238	855	476420.0861	4633921.94
60	484248.3365	4620029.913	458	476630.3019	4626996.466	856	476427.2495	4633968.239
61	484183.1596	4619898.935	459	476633.4213	4627004.355	857	476439.9326	4634021.604
62	484104.7131	4619725.455	460	476637.3713	4627013.924	858	476444.6216	4634039.865
63	484060.3289	4619532.142	461	476642.44	4627023.647	859	476482.0948	4634069.011
64	483940.4605	4619565.136	462	476645.4424	4627030.404	860	476509.7254	4634101.543
65	483817.3233	4619593.35	463	476647.3361	4627036.168	861	476526.1945	4634130.445
66	483725.9183	4619624.049	464	476648.6745	4627041.505	862	476526.4951	4634164.76
67	483573.4366	4619626.513	465	476648.3032	4627049.343	863	476513.9976	4634215.731
68	483153.9524	4619647.049	466	476646.1246	4627056.04	864	476510.0077	4634257.699
69	482961.3931	4619636.343	467	476644.5012	4627063.164	865	476511.2286	4634273.118
70	482758.4206	4619610.694	468	476639.6328	4627084.394	866	476520.7371	4634298.438
71	482597.7412	4619589.772	469	476633.6718	4627103.231	867	476534.5605	4634314.004
72	482447.9425	4619543.566	470	476630.7686	4627112.021	868	476548.8802	4634347.081
73	482340.4123	4619504.204	471	476626.9585	4627126.541	869	476566.7251	4634378.1
74	482237.5099	4619431.017	472	476625.117	4627140.384	870	476623.8431	4634403.973
75	482130.6683	4619332.376	473	476622.6078	4627151.419	871	476689.3301	4634432.745
76	482034.4368	4619231.741	474	476619.9245	4627165.392	872	476722.1633	4634439.43
77	481937.8364	4619162.862	475	476615.7497	4627175.147	873	476771.2187	4634427.497
78	481876.3731	4619126.336	476	476608.3949	4627193.408	874	476800.0793	4634414.528
79	481839.5236	4619149.183	477	476602.9452	4627204.408	875	476823.2899	4634405.695
80	481801.2044	4619165.114	478	476600.1739	4627213.899	876	476845.7922	4634397.555
81	481737.9328	4619196.079	479	476597.1112	4627224.367	877	476888.7617	4634375.648
82	481502.8831	4619289.009	480	476595.9629	4627237.948	878	476907.3812	4634340.152
83	481677.8831	4620241.009	481	476596.396	4627248.877	879	476943.4063	4634313.263
84	481803.8831	4620983.009	482	476599.8413	4627265.722	880	476966.5598	4634309.331
85	481922.8831	4622068.009	483	476601.9514	4627276.951	881	476990.6173	4634287.904
86	482200.0831	4623354.609	484	476602.2787	4627284.937	882	477033.6194	4634263.196
87	482244.8831	4623526.809	485	476604.6201	4627288.326	883	477072.8925	4634258.052
88	482351.2831	4623844.609	486	476609.635	4627290.625	884	477095.5334	4634238.008
89	482323.2416	4624533.838	487	476614.0703	4627294.597	885	477109.7564	4634219.268
90	482356.8416	4624811.038	488	476617.8136	4627297.862	886	477126.1287	4634196.351
91	482423.4892	4625090.387	489	476621.425	4627300.425	887	477149.4371	4634179.116
92	482500.4892	4625321.387	490	476624.4291	4627307.042	888	477172.1351	4634154.172
93	482648.2503	4625640.196	491	476622.809	4627313.886	889	477199.7259	4634129.985
94	482792.4503	4626153.996	492	476618.6455	4627322.66	890	477224.3776	4634117.668
95	482734.4023	4626232.822	493	476613.9546	4627328.628	891	477230.8827	4634100.238
96	482702.2023	4626391.022	494	476610.9766	4627331.814	892	477247.0919	4634091.323
97	482814.2023	4626490.422	495	476609.7488	4627341.043	893	477272.2725	4634093.717

98	482796.0023	4626554.822	496	476607.6712	4627351.102	894	477297.5673	4634086.309
99	482570.6023	4626763.422	497	476603.8334	4627355.959	895	477314.444	4634080.204
100	482495.0023	4626746.622	498	476601.4773	4627365.875	896	477331.174	4634086.7
101	482218.1953	4627171.921	499	476597.5858	4627375.353	897	477338.0124	4634100.785
102	482178.9953	4627443.521	500	476589.9543	4627381.286	898	477352.6338	4634107.958
103	482279.7953	4627703.921	501	476584.8726	4627384.728	899	477368.68	4634113.046
104	482229.3953	4627930.721	502	476578.967	4627386.76	900	477388.8699	4634123.084
105	482092.1953	4627922.321	503	476574.5789	4627390.771	901	477402.1482	4634125.34
106	481884.9953	4627894.321	504	476572.4459	4627393.547	902	477439.2149	4634129.272
107	481683.3953	4627807.521	505	476575.235	4627406.604	903	477461.4074	4634147.737
108	481621.7953	4627740.321	506	476576.956	4627415.166	904	477479.4399	4634162.652
109	481532.1953	4627538.721	507	476580.2125	4627424.167	905	477499.6869	4634167.789
110	481486.8471	4627375.785	508	476583.4673	4627433.308	906	477518.607	4634166.609
111	481494.8984	4627185.411	509	476585.75	4627441.738	907	477529.158	4634162.531
112	481653.1779	4627037.571	510	476585.9535	4627448.322	908	477546.6697	4634162.034
113	481591.8471	4626724.785	511	476585.3201	4627454.617	909	477569.0416	4634165.096
114	481612.8471	4626185.785	512	476578.7665	4627464.204	910	477592.13	4634166.765
115	481283.8471	4625590.785	513	476567.7042	4627476.119	911	477629.8153	4634177.708
116	481668.8471	4625436.785	514	476552.0081	4627493.393	912	477660.5155	4634187.168
117	481986.0663	4623490.389	515	476545.0263	4627503.675	913	477668.7215	4634204.069
118	481790.0663	4622230.389	516	476538.8568	4627516.347	914	477685.3537	4634218.968
119	481202.0663	4620998.389	517	476531.8407	4627529.57	915	477700.0241	4634221.94
120	480922.0663	4620270.389	518	476523.8607	4627541.381	916	477713.4246	4634213.693
121	480530.0663	4619766.389	519	476520.9853	4627547.79	917	477739.2401	4634221.696
122	480278.0663	4619738.389	520	476517.8232	4627554.756	918	477785.2783	4634236.937
123	480140.1146	4619814.256	521	476518.9027	4627570.313	919	477846.0683	4634248.149
124	480125.2746	4619818.176	522	476519.1501	4627585.161	920	477894.9967	4634255.721
125	480122.9682	4619816.36	523	476521.7032	4627594.434	921	477936.3213	4634254.802
126	479532.6762	4619717.169	524	476525.1224	4627601.476	922	477977.0681	4634243.372
127	479072.4722	4619693.779	525	476525.7314	4627609.326	923	478005.3429	4634220.593
128	479032.7112	4619740.933	526	476523.3427	4627622.042	924	478015.951	4634211.614
129	478975.3416	4619814.152	527	476525.0767	4627629.485	925	478051.8376	4634196.627
130	478942.6341	4619856.907	528	476527.8008	4627636.099	926	478089.0837	4634185.156
131	478919.455	4619899.212	529	476538.5552	4627650.649	927	478148.7507	4634172.547
132	478867.5439	4619931.38	530	476548.6681	4627660.149	928	478174.7374	4634165.847
133	478917.4919	4619947.646	531	476559.4649	4627671.059	929	478215.3049	4634169.821
134	478940.3395	4619957.995	532	476571.7661	4627685.066	930	478246.7542	4634175.088
135	478984.3446	4619979.513	533	476575.6103	4627691.693	931	478266.2441	4634185.119
136	479018.0233	4619997.83	534	476582.8185	4627698.079	932	478291.4329	4634186.812
137	479047.83	4620011.901	535	476584.5838	4627709.558	933	478318.8444	4634178.028
138	479081.5706	4620024.897	536	476584.5427	4627718.406	934	478353.3226	4634163.725
139	479098.8073	4620036.021	537	476588.4537	4627731.336	935	478380.6689	4634160.542
140	479158.1573	4620055.837	538	476592.832	4627740.21	936	478420.0481	4634146.296
141	479221.2574	4620074.142	539	476598.5876	4627748.936	937	478474.7978	4634135.029
142	479311.1479	4620147.245	540	476606.6616	4627770.878	938	478505.0833	4634119.977
143	479386.3405	4620184.53	541	476605.4343	4627776.488	939	478557.7815	4634104.485
144	479354.9974	4620230.382	542	476608.5003	4627789.829	940	478594.3112	4634094.407
145	479323.5567	4620284.635	543	476613.3015	4627797.597	941	478635.8724	4634073.183
146	479311.943	4620322.387	544	476614.6253	4627804.195	942	478685.9331	4634043.656
147	479300.8636	4620378.104	545	476617.0812	4627810.198	943	478747.888	4634014.967

148	479282.6979	4620518.742	546	476620.3729	4627815.745	944	478792.2416	4633994.477
149	479273.5031	4620563.349	547	476620.8287	4627824.714	945	478840.1693	4633967.726
150	479219.5602	4620625.744	548	476623.3622	4627835.667	946	478867.0193	4633947.031
151	479196.7408	4620661.191	549	476629.3752	4627848.481	947	478918.6189	4633905.618
152	479167.938	4620729.479	550	476633.7568	4627857.075	948	478946.1772	4633884.231
153	479130.1228	4620789.961	551	476642.178	4627867.536	949	478981.0875	4633832.82
154	479093.9762	4620827.354	552	476648.9286	4627877.138	950	479009.4682	4633800.94
155	479077.5801	4620852.372	553	476653.5739	4627887.135	951	479032.0685	4633784.397
156	479063.765	4620896.326	554	476652.0759	4627895.521	952	479071.4314	4633771.551
157	479053.5563	4620931.219	555	476643.1889	4627913.063	953	479124.1623	4633753.258
158	479030.6718	4620972.268	556	476636.9186	4627922.373	954	479159.3814	4633735.462
159	479011.3205	4621010.556	557	476633.312	4627931.435	955	479178.5038	4633725.501
160	478990.626	4621043.927	558	476631.0536	4627944.993	956	479185.5705	4633719.982
161	478987.5244	4621069.8	559	476633.0969	4627961.962	957	479211.1079	4633715.798
162	478966.716	4621112.973	560	476635.1843	4627975.151	958	479234.991	4633709.353
163	478953.1348	4621144.82	561	476636.1612	4627987.486	959	479255.2628	4633700.346
164	478940.1742	4621158.289	562	476637.7438	4627995.908	960	479280.5592	4633692.798
165	478953.9594	4621186.349	563	476640.4971	4628000.001	961	479303.879	4633686.628
166	478942.5212	4621206.523	564	476643.2455	4628004.515	962	479325.3003	4633675.113
167	478906.5211	4621231.314	565	476645.1554	4628008.878	963	479343.5758	4633669.164
168	478877.62	4621247.783	566	476648.0015	4628029.078	964	479366.267	4633668.868
169	478847.9986	4621263.471	567	476648.3857	4628044.208	965	479383.0867	4633667.663
170	478824.1245	4621271.67	568	476648.8008	4628056.677	966	479401.0267	4633666.471
171	478801.6385	4621278.411	569	476648.2912	4628064.373	967	479416.7099	4633666.654
172	478791.682	4621291.6	570	476644.6569	4628075.815	968	479461.6496	4633655.974
173	478789.8531	4621322.177	571	476644.9565	4628086.182	969	479487.4442	4633653.753
174	478786.0327	4621340.451	572	476645.4384	4628092.91	970	479505.6838	4633650.884
175	478781.6691	4621354.405	573	476644.7691	4628102.285	971	479520.0418	4633644.609
176	478775.7033	4621361.618	574	476642.1509	4628110.657	972	479543.2963	4633644.04
177	478759.9323	4621368.998	575	476641.2602	4628114.988	973	479561.4903	4633645.092
178	478737.6549	4621381.903	576	476642.1248	4628124.942	974	479577.7075	4633647.521
179	478725.2477	4621389.042	577	476642.7321	4628132.932	975	479592.8144	4633649.098
180	478721.2358	4621396.838	578	476641.7926	4628141.463	976	479610.204	4633647.06
181	478717.9209	4621416.966	579	476635.234	4628151.471	977	479626.9814	4633649.496
182	478707.6339	4621434.492	580	476629.4879	4628163.868	978	479644.3026	4633653.339
183	478686.6721	4621454.696	581	476612.7214	4628191.462	979	479651.496	4633660.985
184	478671.6697	4621468.246	582	476609.7971	4628202.072	980	479662.8761	4633675.062
185	478652.1928	4621481.184	583	476606.3256	4628211.555	981	479684.9093	4633683.161
186	478624.4478	4621506.631	584	476607.6412	4628218.852	982	479704.1615	4633689.548
187	478612.7898	4621521.62	585	476613.1739	4628224.799	983	479718.9361	4633695.602
188	478607.5905	4621546.802	586	476623.5001	4628228	984	479737.9018	4633702.545
189	478601.8843	4621568.27	587	476629.3781	4628228.348	985	479757.6815	4633711.738
190	478585.8952	4621594.413	588	476641.453	4628225.688	986	479765.6695	4633723.315
191	478574.3773	4621621.448	589	476653.3066	4628217.983	987	479772.459	4633741.6
192	478564.0479	4621642.615	590	476669.3349	4628212.568	988	479791.1964	4633768.148
193	478546.3623	4621670.139	591	476683.963	4628207.136	989	479818.9895	4633798.333
194	478539.4847	4621683.504	592	476698.311	4628201.701	990	479845.4649	4633822.278
195	478534.8801	4621694.094	593	476707.0286	4628198.721	991	479862.1379	4633833.676
196	478516.4324	4621714.887	594	476712.913	4628198.51	992	479894.4974	4633844.976
197	478509.7438	4621736.096	595	476714.5608	4628201.33	993	479922.4086	4633853.424

198	478475.7694	4621791.44	596	476710.793	4628212.21	994	479947.4377	4633868.841
199	478461.1774	4621817.88	597	476697.4382	4628228.58	995	479974.5186	4633876.438
200	478444.449	4621843.364	598	476687.1835	4628243.305	996	479999.0528	4633886.247
201	478424.1277	4621865.846	599	476682.5364	4628257.536	997	480013.8013	4633894.542
202	478406.9496	4621887.373	600	476679.7553	4628279.911	998	480034.063	4633919.046
203	478385.6592	4621898.17	601	476678.368	4628302.863	999	480091.165	4633946.32
204	478374.0337	4621910.359	602	476672.4865	4628350.971	1000	480148.2508	4633974.994
205	478364.4662	4621914.169	603	476673.7793	4628360.229	1001	480175.4994	4633980.213
206	478357.1457	4621917.445	604	476687.0689	4628373.548	1002	480210.5882	4633973.62
207	478344.0288	4621937.459	605	476695.946	4628380.933	1003	480235.7445	4633978.114
208	478326.6329	4621964.146	606	476699.2024	4628389.934	1004	480262.9115	4633990.334
209	478312.3828	4621985.268	607	476682.6171	4628419.151	1005	480280.9849	4634001.749
210	478303.5611	4621997.209	608	476675.8146	4628438.949	1006	480320.7545	4634014.116
211	478292.551	4622004.644	609	476671.1154	4628457.66	1007	480343.151	4634015.077
212	478285.4877	4622009.884	610	476667.7042	4628474.006	1008	480386.5193	4634019.083
213	478282.8891	4622016.576	611	476665.2878	4628489.103	1009	480493.5926	4634024.531
214	478280.4925	4622029.993	612	476662.2315	4628499.011	1010	480547.4849	4634025.22
215	478272.1463	4622049.222	613	476650.8322	4628515.824	1011	480614.8156	4634017.54
216	478258.0694	4622077.757	614	476639.498	4628527.036	1012	480626.8556	4634065.997
217	478240.116	4622105.989	615	476629.8507	4628537.707	1013	480639.1403	4634093.449
218	478238.501	4622124.457	616	476622.5268	4628553.307	1014	480668.7982	4634132.308
219	478236.0425	4622143.195	617	476618.7411	4628565.728	1015	480701.3137	4634166.298
220	478227.9015	4622168.869	618	476616.6471	4628577.187	1016	480744.2345	4634148.592
221	478212.4335	4622198.379	619	476613.3434	4628584.291	1017	480777.1169	4634151.075
222	478197.5874	4622222.575	620	476610.9027	4628589.444	1018	480804.3655	4634156.294
223	478185.0827	4622238.115	621	476604.7658	4628599.316	1019	480833.0307	4634160.129
224	478172.5356	4622257.295	622	476598.5638	4628614.789	1020	480877.8319	4634161.351
225	478160.0244	4622277.849	623	476593.4739	4628630.976	1021	480944.7165	4634181.837
226	478150.1217	4622306.052	624	476589.9324	4628646.48	1022	480988.0277	4634190.744
227	478146.9076	4622317.498	625	476587.8237	4628659.199	1023	481036.3622	4634189.206
228	478129.6322	4622337.907	626	476590.7903	4628669.037	1024	481067.3235	4634176.262
229	478114.2587	4622379.3	627	476593.6511	4628675.933	1025	481092.5859	4634171.654
230	478097.2379	4622412.778	628	476592.2687	4628686.42	1026	481122.7248	4634169.204
231	478088.5945	4622435.31	629	476584.9953	4628697.679	1027	481190.5248	4634179.797
232	478072.9054	4622467.049	630	476577.6161	4628705.996	1028	481242.9217	4634190.211
233	478067.5269	4622486.563	631	476571.1943	4628716.285	1029	481307.2699	4634196.562
234	478068.5169	4622497.778	632	476567.4477	4628725.345	1030	481330.6519	4634173.026
235	478063.9786	4622503.034	633	476563.9404	4628737.908	1031	481357.3717	4634163.534
236	478054.7373	4622514.564	634	476561.3547	4628743.48	1032	481382.6992	4634153.325
237	478047.2393	4622521.059	635	476554.5715	4628748.723	1033	481407.5861	4634138.01
238	478043.2078	4622530.535	636	476548.757	4628754.957	1034	481423.1198	4634126.987
239	478043.0939	4622540.337	637	476540.5979	4628770.127	1035	481436.6101	4634111.038
240	478040.0638	4622548.005	638	476535.1807	4628778.327	1036	481451.6637	4634081.103
241	478036.8546	4622559.031	639	476525.587	4628796.422	1037	481470.8775	4634054.718
242	478035.6693	4622564.619	640	476519.0008	4628808.809	1038	481523.1449	4634016.113
243	478035.4886	4622568.118	641	476511.037	4628819.22	1039	481548.1215	4634001.678
244	478033.0919	4622569.491	642	476503.0896	4628828.231	1040	481579.303	4633969.83
245	478028.0867	4622578.396	643	476498.2439	4628835.457	1041	481597.6171	4633909.023
246	478022.2235	4622588.831	644	476493.8037	4628843.948	1042	481592.977	4633886.561
247	478018.1937	4622598.167	645	476487.8964	4628858.164	1043	481587.6938	4633859.19

248	478014.7533	4622604.99	646	476480.1736	4628871.939	1044	481603.1622	4633853.768
249	478013.6624	4622614.5	647	476469.3604	4628886.518	1045	481643.1277	4633849.332
250	478010.9384	4622619.931	648	476461.509	4628899.311	1046	481660.0698	4633837.625
251	478007.3385	4622628.432	649	476454.7811	4628911.837	1047	481698.5573	4633804.219
252	478006.018	4622633.598	650	476450.8716	4628922.855	1048	481764.6698	4633754.814
253	478007.6284	4622639.639	651	476442.986	4628938.588	1049	481791.2347	4633758.624
254	478006.5749	4622645.929	652	476433.6969	4628954.586	1050	481807.3788	4633755.311
255	478003.3869	4622655.135	653	476423.6066	4628967.213	1051	481809.8437	4633736.653
256	478001.1937	4622663.092	654	476416.9211	4628976.098	1052	481819.2888	4633730.918
257	477997.6361	4622679.996	655	476408.7977	4628988.187	1053	481831.6893	4633712.179
258	477994.8324	4622692.288	656	476401.7849	4629001.13	1054	481871.883	4633688.139
259	477991.2503	4622699.249	657	476395.3288	4629014.36	1055	481902.9177	4633668.893
260	477983.8533	4622709.106	658	476391.8313	4629026.083	1056	481950.3487	4633651.214
261	477976.5931	4622719.245	659	476388.9867	4629041.875	1057	481996.4857	4633631.469
262	477974.8363	4622725.807	660	476386.6957	4629058.234	1058	482044.324	4633612.419
263	477977.562	4622732.281	661	476385.8261	4629072.789	1059	482085.9824	4633567.401
264	477980.9683	4622740.443	662	476384.4779	4629080.335	1060	482145.0453	4633530.904
265	477984.0783	4622750.002	663	476378.7741	4629089.092	1061	482205.3598	4633493.853
266	477980.9114	4622757.388	664	476371.5105	4629099.511	1062	482251.5868	4633432.77
267	477977.7413	4622765.054	665	476368.0342	4629109.414	1063	482275.2867	4633381.928
268	477972.1679	4622774.652	666	476365.7855	4629122.132	1064	482303.8307	4633336.044
269	477968.1706	4622781.188	667	476363.8836	4629141.156	1065	482338.204	4633270.622
270	477965.9595	4622790.686	668	476364.6617	4629170.575	1066	482365.9989	4633228.931
271	477964.8996	4622797.536	669	476363.4649	4629177.143	1067	482379.3261	4633226.985
272	477965.9482	4622803.71	670	476359.4578	4629184.519	1068	482398.9303	4633227.213
273	477964.8769	4622811.54	671	476366.709	4629188.925	1069	482417.8669	4633224.633
274	477965.367	4622817.568	672	476374.9608	4629201.905	1070	482417.3868	4633205.721
275	477967.1737	4622824.137	673	476377.5561	4629219.582	1071	482404.1655	4633198.564
276	477962.4233	4622829.858	674	476382.8022	4629226.085	1072	482412.9423	4633166.455
277	477956.4396	4622838.611	675	476396.9026	4629241.934	1073	482423.1601	4633130.862
278	477953.4143	4622845.858	676	476406.61	4629250.17	1074	482451.2883	4633120.686
279	477948.8797	4622850.427	677	476421.3194	4629261.825	1075	482490.9123	4633085.435
280	477945.016	4622857.525	678	476429.7926	4629279.849	1076	482517.1683	4633055.63
281	477941.7026	4622865.469	679	476443.4956	4629305.777	1077	482555.921	4633035.074
282	477938.3241	4622879.014	680	476464.7927	4629328.993	1078	482579.8075	4633028.349
283	477925.4091	4622905.753	681	476479.4402	4629345.969	1079	482613.6673	4633007.036
284	477915.4474	4622929.285	682	476491.8667	4629361.238	1080	482633.8733	4632972.759
285	477909.9492	4622946.608	683	476502.105	4629372.001	1081	482652.1432	4632907.149
286	477905.7289	4622960.283	684	476513.1801	4629383.054	1082	482651.3053	4632858.822
287	477899.159	4622971.27	685	476520.2791	4629398.821	1083	482655.979	4632818.263
288	477898.3056	4622983.595	686	476532.4386	4629412.968	1084	482683.7004	4632782.873
289	477895.4742	4622998.267	687	476546.0213	4629425.17	1085	482719.9052	4632740.58
290	477892.2845	4623007.613	688	476565.1791	4629448.26	1086	482745.6241	4632696.764
291	477888.5119	4623018.913	689	476585.1672	4629463.618	1087	482764.7644	4632676.68
292	477880.6948	4623028.765	690	476595.1612	4629471.297	1088	482783.9293	4632654.495
293	477871.7624	4623038.185	691	476600.1403	4629476.676	1089	482816.3154	4632639.467
294	477861.9605	4623050.115	692	476608.1968	4629482.372	1090	482858.357	4632637.155
295	477859.0965	4623055.544	693	476612.7687	4629498.671	1091	482893.983	4632644.572
296	477852.6601	4623067.093	694	476613.801	4629506.245	1092	482980.9842	4632638.483
297	477847.2739	4623072.632	695	476616.2433	4629512.996	1093	483060.6544	4632652.014

298	477842.7263	4623078.321	696	476619.8318	4629517.519	1094	483135.8141	4632692.103
299	477842.1516	4623079.575	697	476625.6185	4629525.709	1095	483179.9553	4632750.037
300	477839.3983	4623087.525	698	476636.4495	4629533.678	1096	483222.9407	4632786.95
301	477830.4219	4623100.726	699	476647.8177	4629543.613	1097	483271.4295	4632832.33
302	477820.182	4623114.191	700	476656.0858	4629555.193	1098	483310.2629	4632864.993
303	477812.5116	4623120.024	701	476662.6279	4629570.675	1099	483329.7781	4632949.301
304	477802.1236	4623122.56	702	476663.8978	4629581.893	1100	483291.0665	4632975.809
305	477792.5104	4623129.875	703	476659.2834	4629593.323	1101	483298.3851	4633008.805
306	477783.4477	4623138.452	704	476656.8637	4629608.7	1102	483305.085	4633034.792
307	477778.537	4623151.28	705	476654.4994	4629619.316	1103	483319.2664	4633079.773
308	477765.1368	4623171.571	706	476648.5237	4629627.37	1104	483321.7736	4633105.011
309	477757.1878	4623180.722	707	476645.1109	4629631.811	1105	483321.26	4633149.121
310	477746.9267	4623196.008	708	476637.2009	4629637.601	1106	483313.159	4633183.338
311	477723.6498	4623246.714	709	476638.8096	4629643.782	1107	483312.1817	4633207.135
312	477714.4145	4623270.135	710	476653.0696	4629645.909	1108	483320.3552	4633226.837
313	477700.6301	4623299.384	711	476664.5715	4629644.362	1109	483325.5814	4633259.109
314	477690.2779	4623322.512	712	476677.0105	4629644.807	1110	483324.4493	4633296.209
315	477677.0567	4623351.488	713	476704.8629	4629658.295	1111	483327.4772	4633336.858
316	477665.2522	4623379.08	714	476751.8991	4629684.051	1112	483336.7902	4633378.981
317	477657.5344	4623392.435	715	476776.0945	4629698.897	1113	483336.244	4633425.892
318	477650.3214	4623410.558	716	476790.2829	4629707.185	1114	483339.7928	4633481.952
319	477645.655	4623426.469	717	476792.9042	4629722.621	1115	483337.5048	4633498.031
320	477644.8963	4623443.545	718	476797.5087	4629736.119	1116	483346.4111	4633514.941
321	477650.8688	4623459.86	719	476802.2339	4629739.255	1117	483354.5195	4633540.244
322	477653.6467	4623469.379	720	476805.5587	4629742.375	1118	483356.9369	4633573.184
323	477640.8552	4623477.95	721	476807.1869	4629746.875	1119	483373.2106	4633618.889
324	477626.4063	4623492.067	722	476805.0766	4629759.735	1120	483413.2242	4633670.473
325	477615.8945	4623504.829	723	476810.0264	4629767.635	1121	483460.0762	4633736.141
326	477602.6506	4623535.766	724	476823.6253	4629778.437	1122	483496.8417	4633765.979
327	477583.1967	4623594.92	725	476833.2904	4629790.313	1123	483534.5716	4633781.724
328	477567.161	4623654.57	726	476847.6512	4629807.846	1124	483584.8683	4633792.113
329	477544.7012	4623722.515	727	476856.9841	4629824.2	1125	483622.6112	4633798.155
330	477542.7638	4623768.708	728	476864.9754	4629835.497	1126	483664.4245	4633815.447
331	477545.4507	4623838.763	729	476884.2211	4629842.443	1127	483702.0369	4633832.691
332	477540.1672	4623871.613	730	476893.3912	4629848.712	1128	483763.6664	4633832.008
333	477542.0235	4623892.641	731	476896.6509	4629857.433	1129	483834.1217	4633795.015
334	477541.1362	4623908.736	732	476904.4338	4629862.565	1130	483887.3657	4633792.834
335	477540.1919	4623929.733	733	476923.1389	4629867.824	1131	483961.5164	4633799.3
336	477513.1471	4623967.231	734	476938.7047	4629878.089	1132	483997.1948	4633810.819
337	477478.9625	4624016.55	735	476941.1177	4629887.36	1133	484041.0108	4633836.538
338	477449.052	4624059.617	736	476949.6789	4629897.823	1134	484069.5131	4633854.376
339	477421.999	4624097.816	737	476962.4441	4629908.055	1135	484093.9124	4633863.763
340	477397.6083	4624147.949	738	476973.7211	4629925.832	1136	484123.2617	4633869.007
341	477391.3561	4624203.895	739	476982.8163	4629938.542	1137	484153.4904	4633858.855
342	477379.405	4624268.178	740	476988.1828	4629958.772	1138	484192.1292	4633848.101
343	477369.1638	4624366.092	741	476993.2921	4629977.037	1139	484218.7675	4633845.61
344	477363.2373	4624454.253	742	476995.5877	4629996.39	1140	484243.4521	4633830.492
345	477360.5508	4624504.639	743	476992.5819	4630014.001	1141	484281.244	4633832.333
346	477374.9197	4624520.641	744	476989.3057	4630030.769	1142	484303.1606	4633814.382
347	477382.2159	4624531.509	745	476996.4054	4630048.197	1143	484338.2741	4633805.687

348	477387.8594	4624539.978	746	477013.0051	4630065.896	1144	484378.8747	4633806.86
349	477386.6219	4624550.047	747	477018.4025	4630083.465	1145	484456.5824	4633868.687
350	477382.7077	4624561.485	748	477030.8258	4630099.015	1146	484475.8197	4633900.422
351	477375.4035	4624587.449	749	477036.2233	4630116.583	1147	484506.3329	4633925.986
352	477358.8054	4624629.83	750	477041.5881	4630136.953	1148	484541.6411	4633960.709
353	477349.7345	4624639.108	751	477040.033	4630150.239	1149	484582.7054	4633982.194
354	477338.1725	4624645.836	752	477042.6869	4630162.874	1150	484622.4836	4633993.861
355	477327.1721	4624652.43	753	477052.9772	4630181.2	1151	484658.5246	4634025.792
356	477303.4569	4624668.54	754	477054.1738	4630198.72	1152	484686.8884	4634055.533
357	477295.3712	4624677.409	755	477065.2865	4630206.552	1153	484710.9372	4634095.027
358	477293.2024	4624683.266	756	477091.8185	4630213.163	1154	484732.275	4634126.786
359	477295.7294	4624694.779	757	477109.1672	4630226.669	1155	484754.37	4634153.653
360	477298.841	4624704.198	758	477126.524	4630239.475	1156	484769.7407	4634156.633
361	477303.0614	4624714.611	759	477158.5594	4630254.553	1157	484791.7634	4634129.58
362	477305.0983	4624720.097	760	477177.3736	4630262.474	1158	484819.9896	4634111.002
363	477277.5895	4624753.618	761	477198.8906	4630278.83	1159	484857.2525	4634098.131
364	477236.0994	4624785.987	762	477214.6842	4630305.623	1160	484904.3502	4634082.574
365	477197.6651	4624839.458	763	477217.3137	4630320.358	1161	484927.4715	4634081.442
366	477162.5605	4624907.673	764	477225.4383	4630344.261	1162	484953.5483	4634067.041
367	477138.8086	4624980.46	765	477230.0867	4630366.022	1163	484980.9358	4634060.357
368	477104.8376	4625052.21	766	477235.5086	4630381.491	1164	485017.5964	4634039.077
369	477067.5209	4625132.044	767	477233.2941	4630391.268	1165	485054.2489	4634018.496
370	477046.5087	4625192.72	768	477227.5789	4630401.005	1166	485083.1507	4634002.027
371	477038.6119	4625269.654	769	477225.3237	4630414.283	1167	485106.8988	4634007.205
372	477055.1786	4625369.9	770	477224.5095	4630424.077	1168	485136.1259	4634022.951
373	477090.462	4625464.722	771	477219.5026	4630433.122	1169	485171.0845	4634027.559
374	477059.3058	4625494.47	772	477215.8145	4630449.184	1170	485187.823	4634033.356
375	477025.406	4625519.284	773	477219.1197	4630466.028	1171	485210.0566	4634048.32
376	476985.262	4625539.124	774	477218.9241	4630482.832	1172	485243.5416	4634059.214
377	476948.6674	4625554.804	775	477224.4275	4630491.299	1173	485279.8843	4634065.239
378	476921.94	4625564.997	776	477231.2921	4630507.434	1174	485307.1414	4634069.758
379	476904.3062	4625575.996	777	477235.2648	4630527.087	1175	485337.1093	4634082.011
380	476901.3429	4625589.966	778	477251.1888	4630542.677	1176	485365.6688	4634094.948
381	476910.1842	4625612.476	779	477259.5742	4630544.175	1177	485395.4085	4634126.805
382	476915.5899	4625629.345	780	477273.6674	4630558.249	1178	485417.9265	4634177.485
383	476923.1938	4625637.836	781	477274.7926	4630582.648	1179	485440.5261	4634221.164
384	476901.5709	4625690.802	782	477268.5532	4630615.004	1180	485461.0496	4634262.717
385	476877.1115	4625757.955	783	477279.0565	4630675.103	1181	485484.6265	4634282.599
386	476847.0577	4625802.206	784	477301.0845	4630707.813	1182	485556.2204	4634328.248
387	476819.3289	4625838.296	785	477318.2621	4630736.023	1183	485598.1399	4634336.439
388	476793.4319	4625897.515	786	477328.5279	4630756.449	1184	485633.1883	4634333.346
389	476777.6706	4625928.142	787	477343.5154	4630792.335	1185	485673.1704	4634327.509
390	476757.5296	4625946.574	788	477347.8786	4630838.602	1186	485697.3506	4634295.58
391	476742.0972	4625973.003	789	477371.8893	4630950.119	1187	485720.7247	4634272.744
392	476733.5132	4625988.589	790	477327.7961	4631008.425	1188	485744.7255	4634256.217
393	476728.1889	4626012.895	791	477302.1022	4631050.14	1189	485766.5444	4634246.668
394	476729.0909	4626031.672	792	477273.4446	4631105.826	1190	485795.9019	4634251.211
395	476726.7169	4626043.128	793	477221.9263	4631200.458	1191	485819.6256	4634258.49
396	476717.0224	4626057.86	794	477174.5599	4631299.34	1192	485847.7214	4634251.114
397	476711.8121	4626072.365	795	477122.5444	4631383.635	1193	485912.8749	4634265.678

398	476711.6688	4626084.687	796	477074.6986	4631456.431	1194	485830.6554	4631870.204
------------	-------------	-------------	------------	-------------	-------------	-------------	-------------	-------------