

VENDIM
Nr. 521, datë 30.6.2026

**PËR SHPALLJEN E DISA ZONAVE ME PËRPARËSI ZHVILLIMIN E
EKONOMISË MALORE NË BASHKINË MALLAKASTËR**

Në mbështetje të nenit 100 të Kushtetutës dhe të pikës 1, të nenit 4, të ligjit nr. 20/2025, “Për paketën e maleve”, me propozimin e ministrit të Shtetit për Pushtetin Vendor, Këshilli i Ministrave

VENDOSI:

1. Shpalljen “Zonë me përparësi zhvillimin e ekonomisë malore” të disa zonave në territorin e Bashkisë Mallakastër, si më poshtë vijon:

a) Zona nr. 1, fshati Klos, pjesë e Njesisë Administrative Hekal, Bashkia Mallakastër, qarku Fier, me sipërfaqe 79 (shtatëdhjetë e nëntë) ha, sipas hartës në sistemin KRGJSH;

b) Zona nr. 2, fshatrat Damës dhe Drizar, pjesë të njësive administrative Fratar dhe Kutë, Bashkia Mallakastër, qarku Fier, me sipërfaqe 174 (njëqind e shtatëdhjetë e katër) ha, sipas hartës në sistemin KRGJSH;

c) Zona nr. 3, fshati Drizar, pjesë e njësive administrative Kutë, Bashkia Mallakastër, qarku Fier, me sipërfaqe 367 (treqind e gjashtëdhjetë e shtatë) ha, sipas hartës në sistemin KRGJSH;

ç) Zona nr. 4, fshatrat Lofkënd, Panahor, Riban dhe Ngraçan, pjesë të njësive administrative Qendër Dukas, Aranitas dhe Ngraçan, Bashkia Mallakastër, qarku Fier, me sipërfaqe 714 (shtatëqind e katërmbëdhjetë) ha, sipas hartës në sistemin KRGJSH;

d) Zona nr. 5, fshati Ninësh, pjesë e Njesisë Administrative Fratar, Bashkia Mallakastër, qarku Fier, me sipërfaqe 234 (dyqind e tridhjetë e katër) ha, sipas hartës në sistemin KRGJSH;

dh) Zona nr. 6, fshati Anëbreg, pjesë e Njesisë Administrative Kutë, Bashkia Mallakastër, qarku Fier, me sipërfaqe 166 (njëqind e gjashtëdhjetë e gjashtë) ha, sipas hartës në sistemin KRGJSH;

e) Zona nr. 7, fshati Çorrush, pjesë e Njesisë Administrative Kutë, Bashkia Mallakastër, qarku Fier, me sipërfaqe 71 (shtatëdhjetë e një) ha, sipas hartës në sistemin KRGJSH;

ë) Zona nr. 8, fshati Aranitas, pjesë e Njesisë Administrative Aranitas, Bashkia Mallakastër, qarku Fier, me sipërfaqe 3 (tre) ha, sipas hartës në sistemin KRGJSH;

f) Zona nr. 9, fshati Gjerbës, pjesë e Njesisë Administrative Selitë, Bashkia Mallakastër, qarku Fier, me sipërfaqe 45 (dyzet e pesë) ha, sipas hartës në sistemin KRGJSH;

g) Zona nr. 10, fshati Panahor, pjesë e Njesisë Administrative Aranitas, Bashkia Mallakastër, qarku Fier, me sipërfaqe 72 (shtatëdhjetë e dy) ha, sipas hartës në sistemin KRGJSH;

gj) Zona nr. 11, fshati Cfir, pjesë e Njesisë Administrative Aranitas, Bashkia Mallakastër, qarku Fier, me sipërfaqe 71 (shtatëdhjetë e një) ha, sipas hartës në sistemin KRGJSH;

h) Zona nr. 12, fshati Belishovë, pjesë e Njesisë Administrative Qendër Dukas, Bashkia Mallakastër, qarku Fier, me sipërfaqe 32 (tridhjetë e dy) ha, sipas hartës në sistemin KRGJSH;

i) Zona nr. 13, fshatrat Drenovë dhe Belishovë, pjesë të Njesisë Administrative Qendër Dukas, Bashkia Mallakastër, qarku Fier, me sipërfaqe 453 (katërqind e pesëdhjetë e tre) ha, sipas hartës në sistemin KRGJSH;

j) Zona nr. 14, fshati Poçëm, pjesë e Njesisë Administrative Kutë, Bashkia Mallakastër, qarku Fier, me sipërfaqe 5 (pesë) ha, sipas hartës në sistemin KRGJSH;

k) Zona nr. 15, fshati Poçëm, pjesë e Njesisë Administrative Kutë, Bashkia Mallakastër, qarku Fier, me sipërfaqe 7 (shtatë) ha, sipas hartës në sistemin KRGJSH;

l) Zona nr. 16, fshati Hekal, pjesë e Njësisë Administrative Hekal, Bashkia Mallakastër, qarku Fier, me sipërfaqe 125 (njëqind e njëzet e pesë) ha, sipas hartës në sistemin KRGJSH;

ll) Zona nr. 17, fshatrat Çërrilë dhe Selitë, pjesë të Njësisë Administrative Selitë, Bashkia Mallakastër, qarku Fier, me sipërfaqe 357 (treqind e pesëdhjetë e shtatë) ha, sipas hartës në sistemin KRGJSH;

m) Zona nr. 18, fshati Kalenjë, pjesë e Njësisë Administrative Aranitas, Bashkia Mallakastër, qarku Fier, me sipërfaqe 48 (dyzet e tetë) ha, sipas hartës në sistemin KRGJSH;

n) Zona nr. 19, fshati Kash, pjesë e Njësisë Administrative Qendër Dukas, Bashkia Mallakastër, qarku Fier, me sipërfaqe 18 (tetëmbëdhjetë) ha, sipas hartës në sistemin KRGJSH;

nj) Zona nr. 20, fshati Lapulec, pjesë e Njësisë Administrative Qendër Dukas, Bashkia Mallakastër, qarku Fier, me sipërfaqe 1 (një) ha, sipas hartës në sistemin KRGJSH.

2. Shtrirja, kufijtë dhe pikat e hyrjes e të daljes së këtyre zonave përcaktohen në hartën treguese, sipas sistemit KRGJSH, që i bashkëlidhet këtij vendimi.

3. Llojet e aktiviteteve, që do të zhvillohen në këtë zonë, janë:

a) të zhvillimit ekonomik;

b) të zhvillimit industrial;

c) të zhvillimit turistik.

4. Ngarkohen Ministria e Ekonomisë dhe Inovacionit, Agjencia Shtetërore e Kadastrës dhe Bashkia Mallakastër për zbatimin e këtij vendimi.

Ky vendim hyn në fuqi pas botimit në Fletoren Zyrtare.

KRYEMINISTËR

Edi Rama

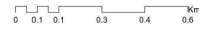
ZONA ME PËRPARËSI ZHVILLIMIN E EKONOMISË MALORE
ZONA 1, NJËSIA ADMINISTRATIVE HEKAL, BASHKIA MALLAKASTËR, QARKU FIER



Njësia Administrative	Zona	Sipërfaqe (ha)
Hekal	Zona 1	79
	Zona 2	174
Kutë dhe Fratar	Zona 3	367
	Zona 4	714
Qendër Dukas, Aranitas dhe Ngraçan	Zona 5	234
	Zona 6	166
Kutë	Zona 7	71
	Zona 8	3
Aranitas	Zona 9	45
	Zona 10	72
Aranitas	Zona 11	71
	Zona 12	32
Qendër Dukas	Zona 13	453
	Zona 14	5
Kutë	Zona 15	7
	Zona 16	125
Hekal	Zona 17	357
	Zona 18	48
Qendër Dukas	Zona 19	18
	Zona 20	1



1:10,000



Legjendë

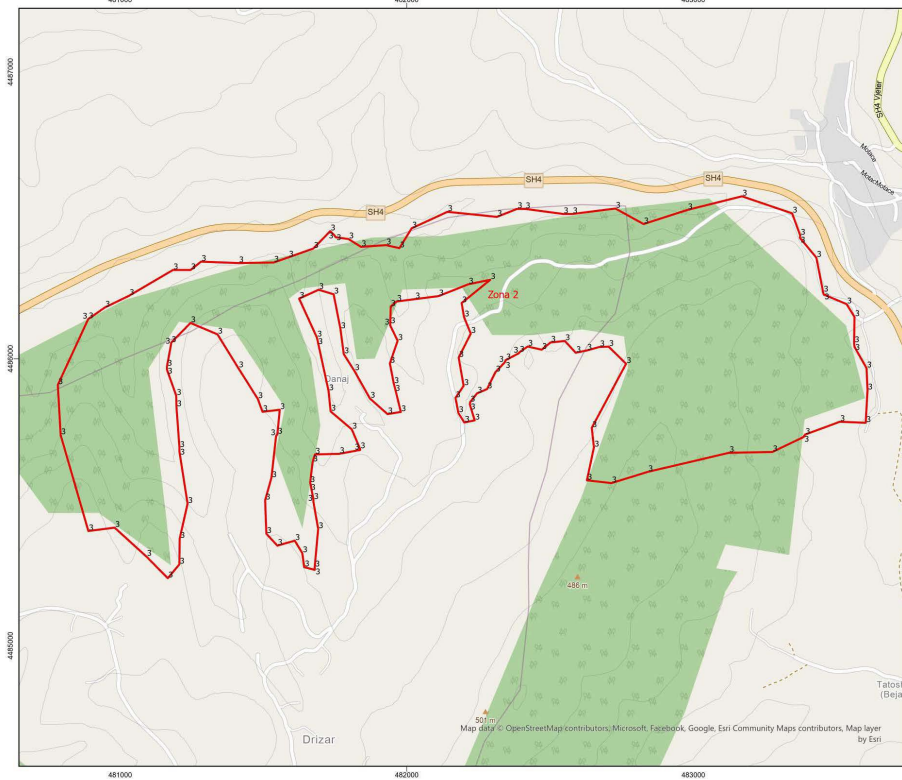
- Zona me përparësi zhvillimin e ekonomisë malore
- Bashkia Mallakastër
- Ndërtësa
- Izoipse
- Kategoritë e Rrjetit Rrugor
 - Kategoria C. Rruge Interurbane Dytësore
 - Kategoria F. Rruge Lokale

*Zona 1 ndodhet në territorin e Njësia Administrative Hekal me sipërfaqe prej 79 ha

**Sistemi Koordinativ: KRGSJSH (Komiza Referuese Gjeodezike Shqiptare) EPSG: 8870

Zona 1								
Njësia Administrative Hekal								
Nr.	Koordinata X	Koordinata Y	Nr.	Koordinata X	Koordinata Y	Nr.	Koordinata X	Koordinata Y
1	479170.844	4487413.628	32	479380.8597	4488352.328	62	480129.62	4487725.262
2	479150.174	4487440.505	33	479361.3104	4488445.409	63	480133.928	4487714.018
3	479144.099	4487489.604	34	479370.4726	4488499.938	64	480160.435	4487683.757
4	479145.913	4487544.522	35	479367.6242	4488574.513	65	480151.726	4487635.339
5	479114.343	4487638.416	36	479360.4842	4488642.109	66	480127.367	4487591.134
6	479091.889	4487711.524	37	479399.094	4488693.438	67	480105.057	4487546.541
7	479016.44	4487894.616	38	479402.3884	4488698.996	68	480073.761	4487523.957
8	479031.73	4487926.441	39	479520.8676	4488782.114	69	480019.986	4487515.997
9	479036.506	4487927.501	40	479610.7822	4488857.66	70	479996.778	4487534.454
10	479036.365	4488015.285	41	479661.3601	4488847.926	71	479973.575	4487532.469
11	478943.702	4488045.749	42	479706.7065	4488750.823	72	479907.481	4487523.807
12	478964.592	4488125.112	43	479780.7299	4488627.261	73	479841.914	4487501.215
13	478993.709	4488140.214	44	479790.0883	4488620.986	74	479844.987	4487501.205
14	479042.847	4488102.344	45	479880.2725	4488538.641	75	479791.036	4487496.145
15	479096.181	4488073.895	46	479993.5343	4488446.919	76	479746.737	4487520.533
16	479144.974	4488038.845	47	479993.9165	4488456.189	77	479721.974	4487547.839
17	479188.368	4487993.069	48	480026.0679	4488377.106	78	479678.14	4487576.055
18	479192.847	4487988.455	49	480028.2956	4488371.149	79	479633.773	4487611.063
19	479234.115	4487954.292	50	480057.7666	4488313.955	80	479592.608	4487615.151
20	479313.494	4487922.997	51	480059.9989	4488309.622	81	479553.61	4487610.827
21	479392.891	4487922.739	52	479990.8958	4488234.958	82	479521.82	4487609.722
22	479396.911	4487922.725	53	479937.3574	4488198.059	83	479488.39	4487594.07
23	479454.477	4487942.41	54	479907.6922	4488113.052	84	479452.234	4487573.442
24	479525.99	4487958.955	55	479908.7865	4488109.152	85	479399.318	4487535.515
25	479614.719	4487946.344	56	480042.1092	4487990.744	86	479349.016	4487521.344
26	479642.196	4487948.993	57	480042.4663	4487998.732	87	479306.621	4487499.337
27	479650.647	4488074.962	58	480042.5353	4487940.293	88	479262.434	4487490.357
28	479628.727	4488210.574	59	480003.7955	4487871.406	89	479235.057	4487478.976
29	479581.915	4488401.702	60	480014.0628	4487831.014	90	479188.075	4487454.7
30	479469.283	4488351.885	61	480054.1822	4487745.302	91	479170.844	4487413.628
31	479417.947	4488317.813						

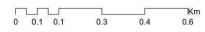
ZONA ME PËRPARËSI ZHVILLIMIN E EKONOMISË MALORE
ZONA 2, NJËSIA ADMINISTRATIVE KUTË DHE FRATAR, BASHKIA MALLAKASTËR, QARKU FIER



Njësia Administrative	Zona	Sipërfaqe (ha)
Hekal	Zona 1	79
Kutë dhe Fratar	Zona 2	174
Kutë	Zona 3	367
Qendër Dukas, Aranitës dhe Njësia	Zona 4	714
Fratar	Zona 5	234
Kutë	Zona 6	166
Kutë	Zona 7	71
Aranitës	Zona 8	8
Selhtë	Zona 9	45
Aranitës	Zona 10	72
Aranitës	Zona 11	71
Qendër Dukas	Zona 12	32
Qendër Dukas	Zona 13	453
Kutë	Zona 14	5
Kutë	Zona 15	7
Hekal	Zona 16	125
Selhtë	Zona 17	357
Aranitës	Zona 18	48
Qendër Dukas	Zona 19	18
Qendër Dukas	Zona 20	1



1:10,000



Legjendë

- Zona me përparësi zhvillimin e ekonomisë malore
- Bashkia Mallakastër
- Ndërtësa
- Izoipse
- Kategoritë e Rrjetit Rrugor
 - Kategoria C. Rruge Interurbane Dytësore
 - Kategoria F. Rruge Lokale

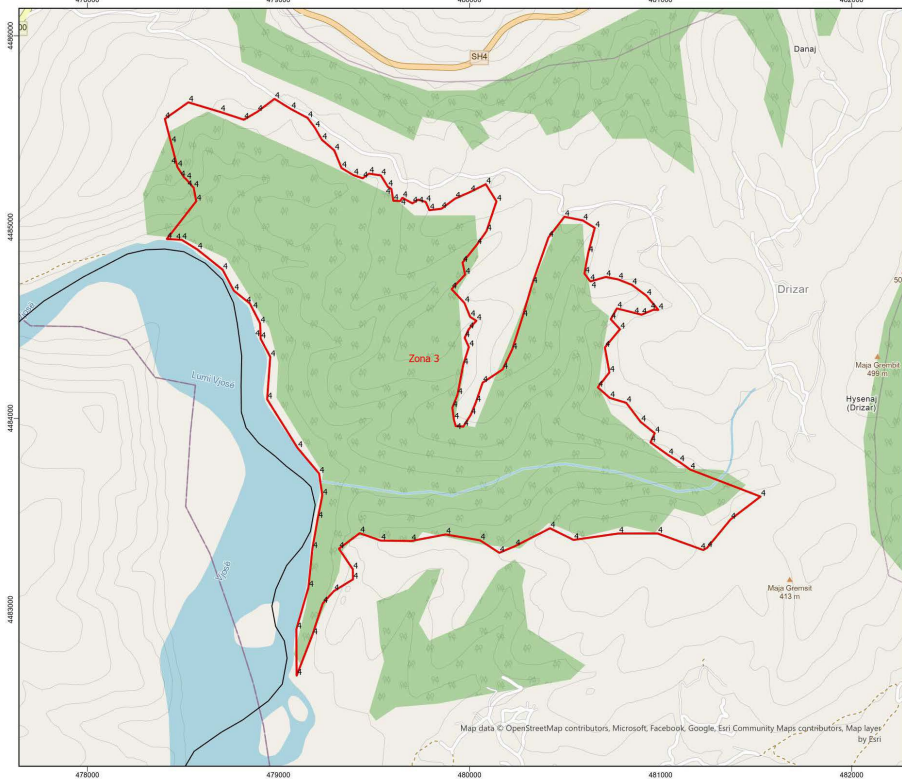
*Zona 2 rëndohet në territorin e Njësia Administrative Kutë dhe Fratar me sipërfaqe prej 174 ha

**Sistemi Koordinativ: KRGSJSH (Komiza Referuese Gjeodezike Shqiptare) EPSG: 8870

Zona 2								
Njësia Administrative Kutë dhe Fratar								
Nr.	Koordinata X	Koordinata Y	Nr.	Koordinata X	Koordinata Y	Nr.	Koordinata X	Koordinata Y
1	480888.5474	4486138.695	51	482645.5716	4485759.501	101	481685.9995	4486075.475
2	480946.6803	4486179.084	52	482765.2883	4485982.972	102	481688.2237	4486066.799
3	481030.8329	4486219.923	53	482704.4394	4486042.535	103	481727.0979	4485887.92
4	481184.4239	4486309.959	54	482672.4869	4486041.48	104	481734.4545	4485816.815
5	481245.5336	4486309.789	55	482628.1183	4486029.115	105	481808.2156	4485754.263
6	481282.1831	4486338.907	56	482589.6	4486021.318	106	481837.1537	4485685.925
7	481412.9059	4486334.031	57	482551.6977	4486062.405	107	481837.6766	4485682.513
8	481535.6145	4486335.947	58	482501.5747	4486057.137	108	481764.4767	4485668.906
9	481587.0141	4486353.918	59	482470.9273	4486031.916	109	481679.7576	4485666.868
10	481674.1551	4486384.646	60	482421.7804	4486043.006	110	481671.4966	4485639.925
11	481732.893	4486445.248	61	482392.3196	4486022.318	111	481662.8509	4485567.091
12	481747.5735	4486430.433	62	482392.0529	4486020.146	112	481663.7352	4485566.027
13	481751.9996	4486424.11	63	482345.0696	4485995.468	113	481674.5395	4485508.762
14	481796.9479	4486417.691	64	482343.5747	4485991.192	114	481674.1876	4485502.65
15	481840.2619	4486390.43	65	482341.0639	4485986.929	115	481690.9512	4485407.2
16	481927.7535	4486396.44	66	482309.0635	4485953.209	116	481678.8371	4485273.909
17	481974.4943	4486385.917	67	482280.2057	4485894.584	117	481679.0748	4485264.433
18	482017.0975	4486455.086	68	482245.1082	4485879.544	118	481642.3514	4485274.01
19	482141.9714	4486512.616	69	482220.8568	4485848.732	119	481635.3462	4485323.317
20	482314.5256	4486494.904	70	482220.2238	4485840.852	120	481609.2919	4485366.161
21	482385.0462	4486522.808	71	482236.9931	4485785.649	121	481548.4836	4485348.878
22	482413.1588	4486522.735	72	482200.7612	4485778.142	122	481510.0441	4485390.357
23	482546.0138	4486505.071	73	482180.015	4485811.713	123	481505.9189	4485507.284
24	482577.787	4486504.988	74	482169.8368	4485863.743	124	481527.838	4485585.491
25	482728.1118	4486524.085	75	482198.5334	4485905.985	125	481544.0423	4485731.211
26	482826.2683	4486469.996	76	482181.124	4486004.497	126	481548.4425	4485736.834
27	482978.994	4486519.096	77	482223.3177	4486088.026	127	481556.8961	4485822.552
28	483169.8146	4486566.693	78	482200.009	4486145.212	128	481496.6156	4485815.486
29	483344.7229	4486507.336	79	482191.5515	4486194.571	129	481480.0725	4485860.643
30	483372.7758	4486430.403	80	482291.4459	4486275.69	130	481412.2427	4485968.092
31	483371.5452	4486421.983	81	482214.454	4486259.838	131	481339.4998	4486085.44
32	483429.0283	4486353.206	82	482110.7756	4486218.729	132	481245.3443	4486125.155
33	483452.9456	4486232.194	83	482028.1749	4486208.14	133	481177.8457	4486056.214
34	483455.221	4486224.295	84	481964.3653	4486199.945	134	481177.808	4486051.552
35	483534.9824	4486190.776	85	481944.0009	4486181.638	135	481163.2547	4485973.331
36	483562.2663	4486146.219	86	481942.4326	4486121.62	136	481163.1914	4485962.732
37	483561.0841	4486055.491	87	481942.0331	4486117.186	137	481195.5443	4485871.708
38	483562.1054	4486042.49	88	481968.3017	4486063.156	138	481196.4711	4485832.255
39	483604.3853	4485967.398	89	481941.0392	4485984.09	139	481206.8637	4485690.203
40	483607.7481	4485890.804	90	481954.8862	4485913.16	140	481206.6996	4485677.727
41	483601.3622	4485777.18	91	481957.5671	4485903.794	141	481235.2812	4485494.968
42	483511.1014	4485780.79	92	481979.3024	4485814.991	142	481207.7614	4485373.608

43	483389.4222	4485735.87	93	481932.8508	4485807.472	143	481206.5007	4485283.529
44	483384.757	4485727.587	94	481871.5606	4485861.781	144	481166.2707	4485235.421
45	483275.4338	4485675.366	95	481817.178	4485958.241	145	481091.6954	4485310.711
46	483124.2101	4485672.513	96	481780.2408	4486016.671	146	480980.6697	4485411.599
47	482840.7669	4485605.932	97	481768.6125	4486104.406	147	480889.0407	4485399.901
48	482714.1098	4485566.979	98	481744.9145	4486225.198	148	480792.2785	4485734.533
49	482628.5885	4485576.58	99	481692.4076	4486240.912	149	480782.4386	4485909.293
50	482653.163	4485691.661	100	481624.4658	4486210.065	150	480888.5474	4486138.695

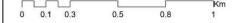
ZONA ME PËRPARËSI ZHVILLIMIN E EKONOMISË MALORE
ZONA 3, NJËSIA ADMINISTRATIVE KUTË, BASHKIA MALLAKASTËR, QARKU FIER



Njësia Administrative	Zona	Sipërfaqe (ha)
Hekal	Zona 1	79
	Zona 2	174
Kutë dhe Fratar	Zona 3	367
	Zona 4	714
Qendër Dukas, Aranitas dhe Ngracan	Zona 5	234
	Zona 6	166
Kutë	Zona 7	71
	Zona 8	3
Aranitas	Zona 9	45
	Zona 10	72
Aranitas	Zona 11	71
	Zona 12	32
Qendër Dukas	Zona 13	453
	Zona 14	5
Kutë	Zona 15	7
	Zona 16	125
Hekal	Zona 17	357
	Zona 18	48
Aranitas	Zona 19	18
	Zona 20	1



1:15,000



Legjendë

- Zona me përparësi zhvillimin e ekonomisë malore
- Bashkia Mallakastër
- Ndërtësa
- Izolpse

Kategoritë e Rrjetit Rrugor

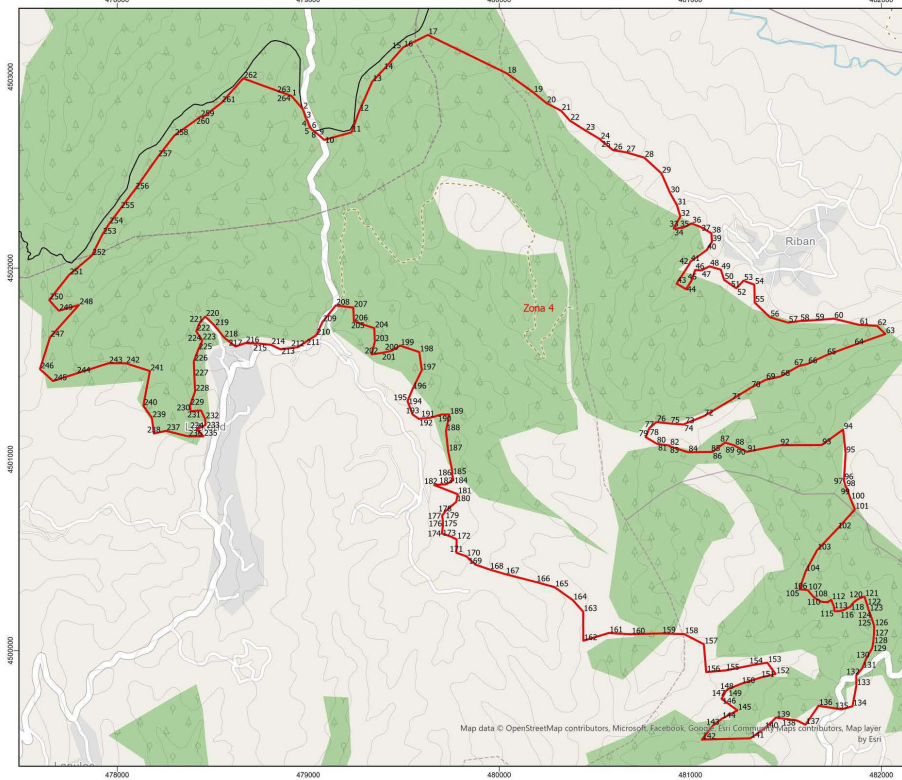
- Kategoria C. Rruge Interurbane Dytësore
- Kategoria F. Rruge Lokale

*Zona 3 ndodhet në territorin e Njësia Administrative Kutë me sipërfaqe prej 367 ha

**Sistemi Koordinativ: KRIGJSH (Komiza Referuese Gjeodezike Shqiptare) EPSG: 8870

Zona 3								
Njësia Administrative Kutë								
Nr.	Koordinata X	Koordinata Y	Nr.	Koordinata X	Koordinata Y	Nr.	Koordinata X	Koordinata Y
1	478493.311	4484934.06	46	479973.2288	4484603.6	91	480947.2299	4483874.818
2	478415.703	4484937.85	47	480003.3637	4484530.52	92	481040.2184	4483807.807
3	478569.56	4485135.55	48	480035.8894	4484510.4	93	481098.5374	4483772.34
4	478555.946	4485206.23	49	479996.3439	4484466.9	94	481154.4533	4483732.54
5	478552.192	4485210.16	50	479974.5604	4484421.17	95	481522.9229	4483591.135
6	478517.63	4485249.67	51	479996.5005	4484373.06	96	481366.1647	4483471.411
7	478506.428	4485259.68	52	479966.7975	4484279.02	97	481243.787	4483323.425
8	478470.893	4485314.02	53	479936.8326	4484123.3	98	481223.2751	4483311.517
9	478467.263	4485328.21	54	479909.9615	4484055.5	99	480984.2233	4483398.278
10	478438.084	4485440.34	55	479918.0536	4483994.14	100	480779.9592	4483398.187
11	478405.188	4485566.09	56	479927.8063	4483959.37	101	480544.5595	4483364.488
12	478528.137	4485652.51	57	479967.4076	4483957.22	102	480421.5739	4483425.37
13	478695.084	4485602.44	58	480006.378	4484018.38	103	480238.8633	4483332.215
14	478818.727	4485561.87	59	480033.0195	4484083.32	104	480155.8419	4483297.005
15	478890.011	4485603.6	60	480068.5123	4484186.61	105	480055.1433	4483362.524
16	478979.289	4485670.84	61	480173.1143	4484256.01	106	479875.4565	4483392.984
17	479065.64	4485617.44	62	480222.7748	4484358.73	107	479693.8088	4483358.693
18	479152.198	4485571.05	63	480277.5112	4484530.97	108	479534.6158	4483361.068
19	479190.466	4485520.18	64	480328.4206	4484704.2	109	479425.2883	4483399.699
20	479227.307	4485456.87	65	480413.1197	4484946.09	110	479316.4786	4483318.601
21	479292.255	4485401.41	66	480496.5625	4485054.32	111	479389.1229	4483210.892
22	479329.838	4485309.42	67	480592.9015	4485035.06	112	479390.1216	4483158.39
23	479392.754	4485271.66	68	480655.3848	4484996.14	113	479289.8678	4483096.854
24	479440.944	4485255.45	69	480621.3397	4484865.66	114	479231.7654	4483032.559
25	479473.577	4485279.82	70	480601.4355	4484757.4	115	479177.5227	4482867.573
26	479535.868	4485270.55	71	480631.4762	4484717.18	116	479095.1331	4482654.811
27	479572.672	4485211.04	72	480636.3379	4484717.1	117	479093.6605	4482897.116
28	479590.912	4485199.87	73	480713.3402	4484739.48	118	479156.8638	4483116.411
29	479601.425	4485138.03	74	480777.69	4484726.72	119	479177.6155	4483318.338
30	479637.387	4485136.55	75	480850.0035	4484698.11	120	479205.5705	4483476.307
31	479648.462	4485153.42	76	480925.6879	4484641.47	121	479229.5652	4483596.867
32	479700.899	4485124.35	77	480988.0294	4484567.32	122	479212.6807	4483711.503
33	479730.596	4485143.64	78	480961.6397	4484567.7	123	479099.8788	4483845.787
34	479770.801	4485131.72	79	480900.5558	4484542.19	124	478940.7495	4484099.81
35	479789.689	4485088.95	80	480891.2358	4484544.51	125	478957.0246	4484321.47
36	479852.39	4485095.89	81	480771.2881	4484574.94	126	478906.9607	4484415.664
37	479924.644	4485149.26	82	480739.2327	4484518.4	127	478906.5484	4484426.511
38	480004.037	4485184.09	83	480787.3307	4484466.09	128	478903.8672	4484497.045
39	480085.096	4485224.58	84	480708.3795	4484371.01	129	478864.8437	4484572.409
40	480140.968	4485134.7	85	480732.2032	4484240.32	130	478850.8669	4484600.352
41	480088.644	4484978.67	86	480671.2268	4484162.23	131	478766.7261	4484667.487
42	480038.157	4484907.57	87	480734.1407	4484106.84	132	478707.2582	4484777.776
43	479963.545	4484814.75	88	480820.1276	4484081.53	133	478575.2816	4484883.427
44	479976.924	4484751.76	89	480896.0998	4483981.18	134	478493.3113	4484934.057
45	479906.296	4484675.69	90	480969.2601	4483922.4			

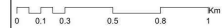
ZONA ME PËRPARËSI ZHVILLIMIN E EKONOMISË MALORE
ZONA 4, NJËSIA ADMINISTRATIVE QENDËR DUKAS, ARANITAS DHE NGRAÇAN, BASHKIA MALLAKASTËR, QARKU FIER



Njësia Administrative	Zona	Sipërfaqe (ha)
Hekal	Zona 1	79
Kutë dhe Fratar	Zona 2	174
Kutë	Zona 3	367
Qendër Dukas, Aranitas dhe Ngraçan	Zona 4	714
Fratar	Zona 5	234
Kutë	Zona 6	166
Kutë	Zona 7	71
Aranitas	Zona 8	3
Selitë	Zona 9	45
Aranitas	Zona 10	72
Aranitas	Zona 11	71
Qendër Dukas	Zona 12	32
Qendër Dukas	Zona 13	453
Kutë	Zona 14	5
Kutë	Zona 15	7
Hekal	Zona 16	125
Selitë	Zona 17	357
Aranitas	Zona 18	48
Qendër Dukas	Zona 19	18
Qendër Dukas	Zona 20	1



1:15,000



- Legjendë**
- Zona me përparësi zhvillim e ekonomisë malore
 - Bashkia Mallakastër
 - Ndërfitesa
 - Izopse
 - Kategorië e Rrjetit Rrugor**
 - Kategorië F. Rruge Lokale

*Zona 4 ndodhet në territorin e Njësia Administrative Qendër Dukas, Aranitas dhe Ngraçan me sipërfaqe prej 714 ha

**Sistemi Koordinativ: KRIGJSH (Komiza Referuese Gjeodezike Shqiptare) EPSG: 8870

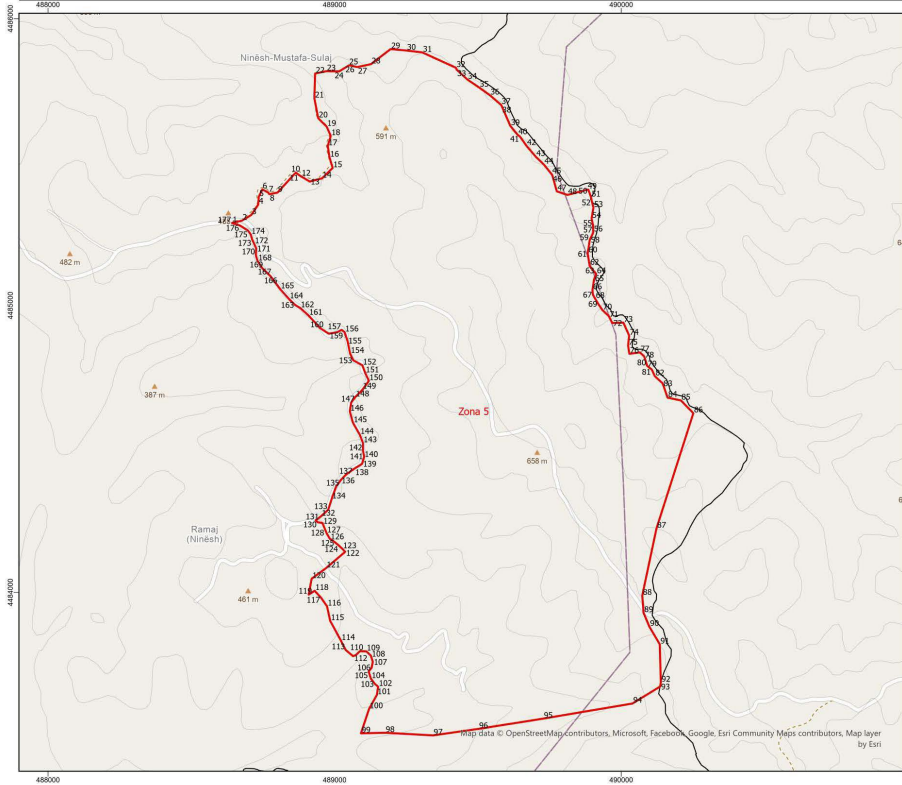
Map data © OpenStreetMap contributors, Microsoft, Facebook, Google, Esri, Garmin, Swatch, Mapbox, Mapbox contributors, Map layer by Esri

Zona 4								
Njësia Administrative Qendër Dukas, Aranitas dhe Ngraçan								
Nr.	Koordinata X	Koordinata Y	Nr.	Koordinata X	Koordinata Y	Nr.	Koordinata X	Koordinata Y
1	478912.3871	4502900.408	89	481235.0119	4501069.838	177	479700.5003	4500705.605
2	478972.0344	4502831.094	90	481293.8059	4501040.109	178	479713.4596	4500722.533
3	478987.7461	4502783.908	91	481296.8234	4501040.101	179	479714.405	4500725.948
4	478995.9462	4502768.146	92	481468.8876	4501074.169	180	479774.45	4500778.051
5	479007.9749	4502736.481	93	481687.8638	4501075.235	181	479782.8052	4500817.617
6	479016.0366	4502729.529	94	481799.7708	4501156.301	182	479659.1974	4500866.222
7	479018.5291	4502724.738	95	481812.8378	4501032.877	183	479721.3832	4500869.805
8	479028.4345	4502718.839	96	481803.8018	4500891.79	184	479759.4341	4500891.266
9	479055.3188	4502695.657	97	481803.8778	4500887.751	185	479752.4832	4500926.993
10	479084.2303	4502670.727	98	481813.6872	4500856.858	186	479755.2971	4500931.826
11	479227.0236	4502710.532	99	481817.0835	4500853.903	187	479732.4412	4501043.197
12	479266.6379	4502820.437	100	481839.1658	4500791.707	188	479720.9455	4501148.601
13	479334.7428	4502975.354	101	481861.1405	4500738.138	189	479738.6154	4501234.816
14	479393.6593	4503037.496	102	481768.7273	4500635.961	190	479696.9502	4501234.94
15	479489.965	4503146.747	103	481663.0381	4500524.695	191	479643.6707	4501218.832
16	479497.8697	4503155.475	104	481603.4617	4500414.557	192	479578.6991	4501212.107
17	479625.9053	4503219.74	105	481571.5104	4500320.74	193	479546.043	4501235.391
18	480039.643	4503018.436	106	481594.8019	4500318.995	194	479519.9738	4501304.767
19	480178.2639	4502919.162	107	481614.9111	4500316.427	195	479519.951	4501305.99
20	480246.5889	4502863.472	108	481645.0362	4500280.285	196	479545.8339	4501367.006
21	480323.6898	4502823.29	109	481649.2839	4500277.062	197	479594.4987	4501466.495
22	480369.6038	4502771.337	110	481685.3316	4500255.569	198	479581.2593	4501561.129
23	480451.198	4502719.891	111	481717.4134	4500253.129	199	479480.6081	4501595.266
24	480528.7705	4502673.777	112	481737.6834	4500265.654	200	479436.852	4501568.051
25	480531.8333	4502669.049	113	481748.4398	4500237.547	201	479383.5954	4501556.662
26	480595.1285	4502617.296	114	481750.0731	4500235.24	202	479331.0098	4501549.176
27	480662.2082	4502606.243	115	481755.5593	4500205.818	203	479348.4602	4501615.548
28	480758.6295	4502578.168	116	481782.3207	4500207.226	204	479345.5968	4501686.507
29	480848.6409	4502495.597	117	481808.5848	4500214.614	205	479299.5479	4501701.505
30	480894.0353	4502392.582	118	481834.6993	4500228.888	206	479238.7611	4501723.198
31	480929.5993	4502329.626	119	481856.6201	4500254.291	207	479235.824	4501794.338
32	480947.7511	4502269.37	120	481884.3878	4500273.979	208	479143.9792	4501804.92
33	480914.2484	4502212.107	121	481911.5703	4500282.732	209	479074.5661	4501718.295
34	480913.5361	4502206.625	122	481923.2122	4500245.534	210	479041.8134	4501649.211
35	480962.3463	4502211.971	123	481935.5199	4500206.048	211	478986.2054	4501614.071
36	481006.8177	4502233.899	124	481950.0754	4500167.49	212	478946.1486	4501586.814
37	481053.9606	4502215.376	125	481950.3833	4500166.068	213	478855.6914	4501575.374
38	481110.3104	4502182.441	126	481962.0492	4500129.18	214	478804.9528	4501599.127
39	481112.9024	4502137.595	127	481961.7174	4500094.481	215	478748.4491	4501605.277
40	481085.7292	4502094.805	128	481957.5989	4500045.585	216	478670.2954	4501607.931
41	480999.9883	4502033.627	129	481951.9525	4500013.538	217	478619.0427	4501590.267

42	480993.0773	4502018.503	130	481920.3772	4499958.055	218	478558.7139	4501638.555
43	480928.188	4501919.133	131	481899.4866	4499907.262	219	478510.8703	4501698.694
44	480977.6014	4501890.032	132	481868.3766	4499870.46	220	478460.9489	4501746.889
45	481006.5577	4501935.595	133	481868.7472	4499816.886	221	478431.7793	4501714.366
46	481025.3381	4501990.504	134	481848.6345	4499709.298	222	478413.8138	4501669.969
47	481057.194	4501988.276	135	481791.3279	4499692.648	223	478443.9816	4501624.343
48	481099.7459	4502009.575	136	481670.9222	4499711.903	224	478445.0387	4501618.3
49	481159.8444	4501992.25	137	481602.5441	4499612.795	225	478423.5653	4501572.151
50	481176.5315	4501939.292	138	481555.8496	4499635.337	226	478401.1996	4501512.944
51	481236.6074	4501897.529	139	481448.4731	4499650.005	227	478404.0422	4501434.986
52	481241.76	4501895.452	140	481387.1209	4499591.185	228	478407.777	4501355.516
53	481278.0304	4501934.813	141	481313.3851	4499541.638	229	478381.1311	4501281.808
54	481334.8067	4501913.807	142	481060.3698	4499535.059	230	478384.7855	4501252.391
55	481337.0862	4501819.967	143	481117.5463	4499607.686	231	478439.0355	4501255.855
56	481416.2603	4501743.567	144	481163.6272	4499643.367	232	478460.1953	4501211.106
57	481511.9031	4501715.085	145	481245.8974	4499687.578	233	478462.8209	4501180.794
58	481572.8062	4501723.557	146	481163.7308	4499748.006	234	478417.422	4501158.083
59	481651.1544	4501727.667	147	481187.036	4499791.282	235	478451.3181	4501120.87
60	481750.7581	4501736.072	148	481193.8772	4499794.634	236	478371.8779	4501120.305
61	481883.9467	4501703.261	149	481195.9418	4499798.004	237	478255.8626	4501149.403
62	481976.9779	4501698.705	150	481265.8303	4499826.715	238	478192.1642	4501135.552
63	482020.7345	4501656.033	151	481367.9973	4499859.197	239	478181.5182	4501217.259
64	481856.6484	4501598.085	152	481446.1597	4499878.175	240	478137.1207	4501280.903
65	481713.2205	4501545.431	153	481403.147	4499936.912	241	478171.35	4501462.213
66	481614.4585	4501499.69	154	481343.9836	4499928.098	242	478044.9003	4501502.74
67	481567.6449	4501487.955	155	481183.5399	4499896.515	243	477955.1755	4501503.026
68	481471.303	4501433.59	156	481083.0003	4499887.983	244	477786.9915	4501449.196
69	481394.4285	4501416.499	157	481070.5135	4500033.464	245	477664.2878	4501409.971
70	481317.1841	4501374.92	158	480967.885	4500086.514	246	477595.8099	4501472.612
71	481215.0552	4501312	159	480850.0395	4500090.029	247	477648.843	4501638.59
72	481070.2377	4501225.928	160	480689.9116	4500085.724	248	477800.0537	4501807.828
73	480970.7858	4501185.866	161	480573.7426	4500092.414	249	477694.4572	4501777.375
74	480964.925	4501182.407	162	480439.9812	4500051.822	250	477644.2388	4501833.401
75	480894.2532	4501187.818	163	480438.8693	4500203.837	251	477747.8776	4501964.425
76	480821.6207	4501194.991	164	480384.8517	4500264.224	252	477867.4055	4502065.659
77	480785.5841	4501163.885	165	480288.8126	4500332.417	253	477922.8157	4502176.385
78	480784.2848	4501162.167	166	480192.4243	4500358.761	254	477956.9015	4502230.679
79	480766.4444	4501116.216	167	480031.4874	4500400.125	255	478016.7328	4502310.337
80	480823.289	4501082.57	168	479948.6136	4500424.483	256	478093.428	4502411.692
81	480828.0885	4501080.896	169	479874.4637	4500450.189	257	478212.6226	4502581.674
82	480891.5428	4501072.431	170	479826.8003	4500493.674	258	478298.7716	4502693.002
83	480890.4379	4501069.127	171	479775.2579	4500512.046	259	478434.7654	4502790.981
84	480987.8425	4501037.679	172	479776.7579	4500581.939	260	478449.4216	4502790.934
85	481108.3461	4501038.981	173	479746.7663	4500596.341	261	478545.466	4502864.11

86	481115.888	4501038.961	174	479699.5254	4500613.198	262	478659.4843	4502992.437
87	481180.7405	4501088.248	175	479705.2044	4500654.811	263	478873.0534	4502914.722
88	481231.8088	4501073.156	176	479704.2699	4500684.394	264	478912.3871	4502900.408

ZONA ME PËRPARËSI ZHVILLIMIN E EKONOMISË MALORE
ZONA 5, NJËSIA ADMINISTRATIVE FRATAR, BASHKIA MALLAKASTËR, QARKU FIER





Njësia Administrative	Zona	Sipërfaqe (ha)
Hekal	Zona 1	79
Kutë dhe Fratar	Zona 2	174
Kutë	Zona 3	367
Qendër Dukas, Aranitas dhe Ngrapan	Zona 4	714
Fratar	Zona 5	234
Kutë	Zona 6	166
Kutë	Zona 7	71
Aranitas	Zona 8	3
Selitë	Zona 9	45
Aranitas	Zona 10	72
Aranitas	Zona 11	71
Qendër Dukas	Zona 12	32
Qendër Dukas	Zona 13	453
Kutë	Zona 14	5
Kutë	Zona 15	7
Hekal	Zona 16	125
Selitë	Zona 17	357
Aranitas	Zona 18	48
Qendër Dukas	Zona 19	18
Qendër Dukas	Zona 20	1



1:10,000



Legjendë

- Zona me përparësi zhvillimin e ekonomisë malore
- Bashkia Mallakastër
- Ndërtësa
- Izopse
- Kategoritë e Rrjetit Rrugor**
- Kategorija F. Rruge Lokale

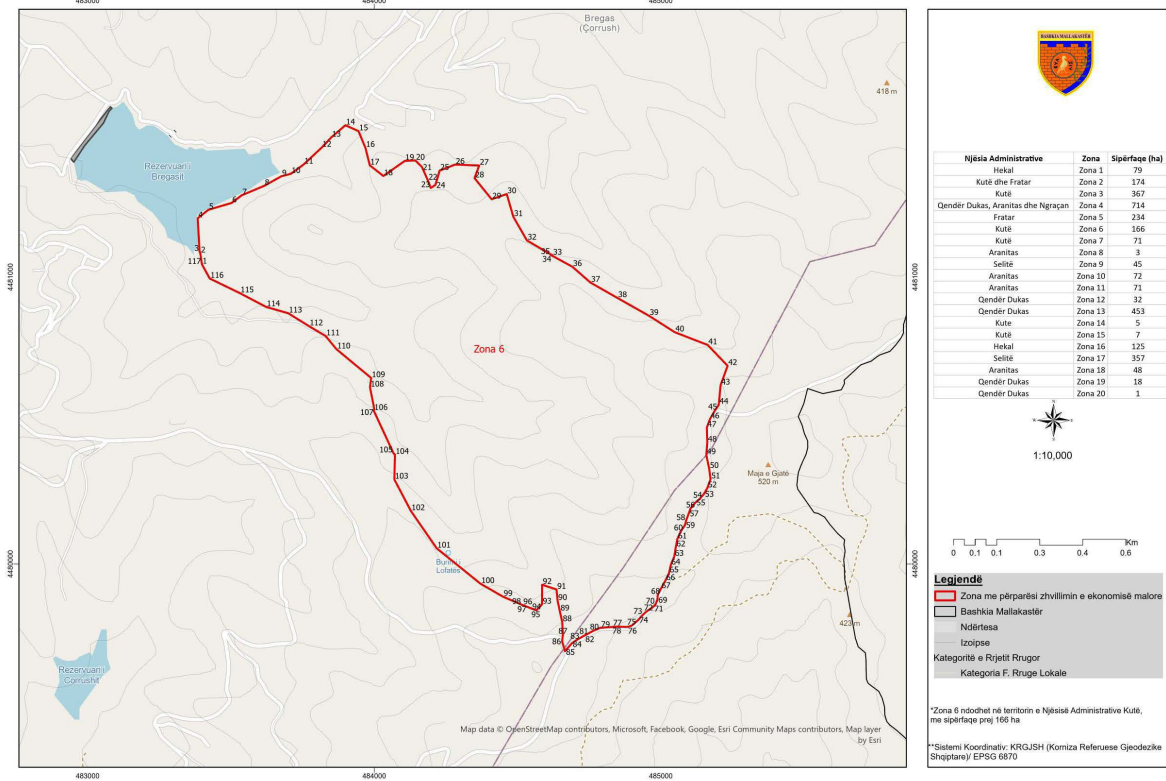
*Zona 5 ndodhet në territorin e Njësia Administrative Fratar, me sipërfaqe prej 234 ha

**Sistemi Koordinativ: KRIGJSH (Komiza Referuese Gjeodezike Shqiptare) EPSG: 8871

Zona 5								
Njësia Administrative Fratar								
Nr.	Koordinata X	Koordinata Y	Nr.	Koordinata X	Koordinata Y	Nr.	Koordinata X	Koordinata Y
1	488641.9026	4485288.083	60	489883.3457	4485182.832	119	488909.3655	4483991.994
2	488676.5876	4485295.843	61	489883.254	4485180.626	120	488919.8353	4484047.62
3	488709.5104	4485316.012	62	489889.5994	4485139.638	121	488970.4023	4484084.854
4	488733.4452	4485351.949	63	489890.6725	4485136.127	122	489036.8495	4484141.412
5	488735.1215	4485378.846	64	489913.1551	4485109.698	123	489027.3003	4484151.572
6	488747.7527	4485404.642	65	489905.4302	4485091.768	124	489014.0228	4484164.035
7	488768.2362	4485394.185	66	489899.7529	4485054.392	125	489001.8009	4484174.072
8	488771.9657	4485388.259	67	489901.1819	4485038.131	126	488983.0138	4484187.449
9	488800.5821	4485393.688	68	489909.0273	4485023.92	127	488972.0251	4484206.485
10	488864.5104	4485463.418	69	489919.8693	4485005.749	128	488965.8667	4484221.243
11	488877.4907	4485453.828	70	489934.6428	4484983.88	129	488957.7216	4484241.755
12	488882.9308	4485450.349	71	489956.3167	4484963.628	130	488940.4744	4484244.777
13	488913.2596	4485432.225	72	489969.0207	4484939.109	131	488933.7036	4484250.891
14	488955.9191	4485443.313	73	490007.561	4484940.245	132	488952.4261	4484265.521
15	488993.3121	4485479.596	74	490027.8281	4484895.37	133	488977.7959	4484288.323
16	488982.1681	4485516.066	75	490024.1175	4484860.707	134	488989.424	4484325.144
17	488976.1054	4485556.314	76	490028.3524	4484831.745	135	489004.9048	4484368.584
18	488986.5368	4485591.426	77	490065.5035	4484836.582	136	489020.6266	4484390.597
19	488972.106	4485623.891	78	490080.1939	4484822.536	137	489038.8462	4484410.037
20	488942.6239	4485653.18	79	490089.3787	4484793.869	138	489069.6341	4484432.05
21	488929.3347	4485722.511	80	490090.0191	4484790.17	139	489095.8915	4484448.263
22	488931.9661	4485808.782	81	490106.7605	4484776.756	140	489102.2252	4484470.016
23	488971.0396	4485816.954	82	490117.316	4484753.659	141	489102.7688	4484474.651
24	489015.6826	4485816.271	83	490144.5351	4484728.809	142	489099.1483	4484492.963
25	489049.9123	4485837.095	84	490161.8137	4484678.995	143	489098.9	4484520.858
26	489053.6698	4485837.037	85	490208.2277	4484669.225	144	489087.7704	4484549.922
27	489079.5217	4485831.265	86	490251.6728	4484624.632	145	489064.2351	4484590.911
28	489126.7851	4485841.425	87	490123.0497	4484222.842	146	489052.9308	4484630.961
29	489195.2431	4485893.938	88	490073.4983	4483989.06	147	489057.655	4484661.698
30	489250.2819	4485888.994	89	490078.1103	4483928.66	148	489072.0459	4484680.65
31	489306.0461	4485882.383	90	490098.3374	4483880.46	149	489097.2455	4484706.746
32	489422.9744	4485829.023	91	490134.6031	4483818.919	150	489119.3454	4484737.518
33	489425.6892	4485822.572	92	490138.3161	4483685.985	151	489107.3819	4484763.562
34	489463.3343	4485787.791	93	490135.531	4483671.647	152	489096.6469	4484791.837
35	489504.4081	4485759.975	94	490039.3625	4483612.655	153	489065.0664	4484809.078
36	489541.7789	4485733.181	95	489727.9527	4483559.968	154	489054.1667	4484832.011
37	489580.2778	4485699.932	96	489502.0468	4483524.235	155	489044.7642	4484877.488
38	489582.8783	4485695.874	97	489343.3012	4483501.473	156	489034.866	4484907.191
39	489613.0608	4485626.386	98	489176.1404	4483510.707	157	489024.6908	4484915.304
40	489639.2791	4485594.398	99	489091.8191	4483508.647	158	489008.2578	4484906.718
41	489646.9191	4485588.802	100	489120.0423	4483593.403	159	488979.4147	4484901.89

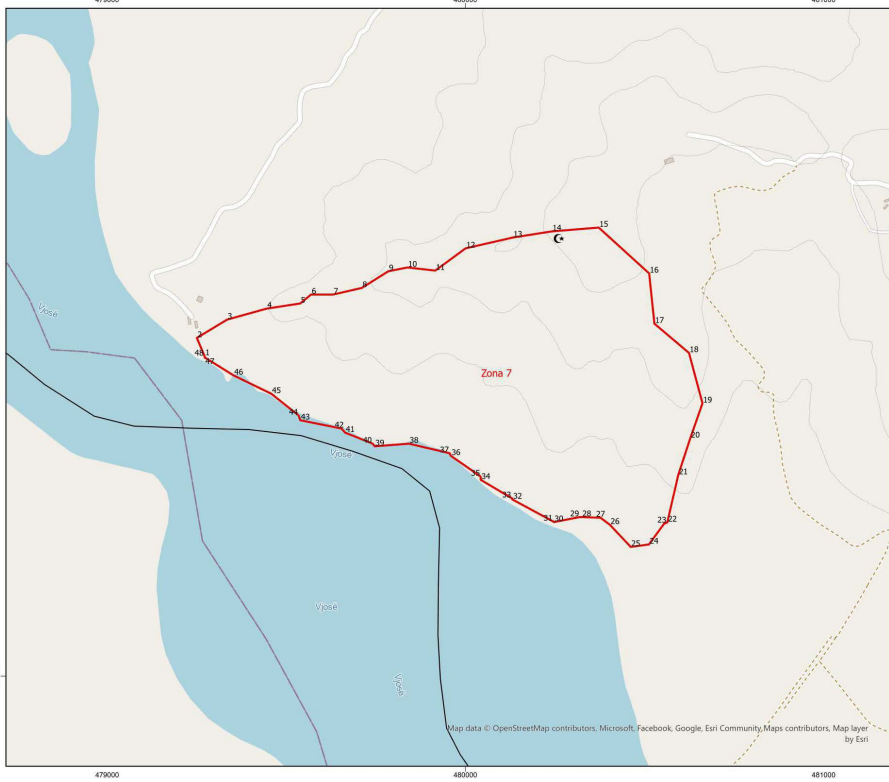
42	489669.3314	4485557.035	101	489147.4349	4483642.612	160	488949.9069	4484920.896
43	489701.6816	4485518.958	102	489151.8476	4483671.245	161	488909.0997	4484965.135
44	489730.0514	4485491.583	103	489140.7629	4483680.735	162	488880.8991	4484990.724
45	489757.1389	4485457.975	104	489126.7444	4483698.851	163	488862.1702	4485002.167
46	489759.4239	4485454.976	105	489118.7332	4483724.377	164	488841.0889	4485022.548
47	489775.187	4485398.184	106	489129.138	4483737.278	165	488809.8719	4485057.514
48	489812.2956	4485385.591	107	489133.2634	4483757.887	166	488777.1789	4485101.652
49	489882.5131	4485404.039	108	489126.2747	4483779.918	167	488745.9285	4485132.072
50	489885.379	4485403.996	109	489110.7317	4483794.286	168	488731.0764	4485155.615
51	489894.9604	4485377.01	110	489088.5708	4483795.274	169	488730.6939	4485156.981
52	489896.6352	4485366.997	111	489074.3528	4483781.985	170	488724.9586	4485175.729
53	489903.1112	4485341.06	112	489064.5172	4483777.689	171	488726.4269	4485198.94
54	489896.5144	4485303.268	113	489038.6111	4483799.29	172	488719.6556	4485214.527
55	489901.5589	4485281.512	114	489022.1063	4483831.698	173	488711.655	4485231.283
56	489902.2619	4485255.509	115	488984.4992	4483901.009	174	488707.6108	4485247.632
57	489901.44	4485252.325	116	488973.4858	4483951.53	175	488697.4303	4485261.685
58	489890.5142	4485229.65	117	488952.3223	4483981.853	176	488670.0929	4485278.86
59	489889.725	4485226.557	118	488930.2027	4484005.7	177	488641.9026	4485288.083

ZONA ME PËRPARËSI ZHVILLIMIN E EKONOMISË MALORE
ZONA 6, NJËSIA ADMINISTRATIVE KUTË, BASHKIA MALLAKASTËR, QARKU FIER



Zona 6								
Njësia Administrative Kutë								
Nr.	Koordinata X	Koordinata Y	Nr.	Koordinata X	Koordinata Y	Nr.	Koordinata X	Koordinata Y
1	483398.7263	4481045.006	40	485048.5844	4480808.126	79	484789.029	4479777.526
2	483393.0561	4481083.762	41	485163.653	4480763.605	80	484765.9558	4479768.052
3	483390.6017	4481088.891	42	485233.073	4480690.914	81	484737.9141	4479752.747
4	483384.0643	4481205.154	43	485208.4777	4480623.091	82	484735.2251	4479751.635
5	483421.199	4481234.83	44	485202.3862	4480555.621	83	484708.0501	4479736.225
6	483502.3649	4481258.717	45	485188.7112	4480534.991	84	484689.2545	4479723.269
7	483537.3203	4481285.349	46	485171.4515	4480504.95	85	484665.5966	4479695.961
8	483616.0248	4481318.334	47	485160.5747	4480475.499	86	484655.4575	4479730.336
9	483676.046	4481351.768	48	485162.2449	4480423.582	87	484658.2519	4479753.448
10	483709.4085	4481360.47	49	485158.8672	4480380.275	88	484655.994	4479797.842
11	483754.1849	4481393.195	50	485168.8483	4480332.123	89	484647.7743	4479835.002
12	483817.0733	4481452.107	51	485173.5479	4480295.892	90	484639.8073	4479872.091
13	483850.2419	4481487.291	52	485162.1718	4480264.566	91	484636.1875	4479911.014
14	483899.443	4481529.561	53	485150.747	4480244.307	92	484585.902	4479927.913
15	483945.1432	4481509.062	54	485136.0811	4480227.37	93	484585.4835	4479859.281
16	483969.1704	4481451.246	55	485120.8878	4480214.612	94	484565.6564	4479838.403
17	483984.5508	4481389.92	56	485103.5787	4480193.364	95	484565.1682	4479838.404
18	484031.8082	4481352.758	57	485097.5612	4480176.291	96	484518.7076	4479856.684
19	484106.8902	4481405.393	58	485087.836	4480150.3	97	484517.686	4479857.229
20	484143.4616	4481406.904	59	485084.55	4480135.745	98	484514.6497	4479858.321
21	484166.5794	4481384.121	60	485069.2393	4480113.443	99	484449.269	4479886.177
22	484187.1793	4481337.271	61	485057.6337	4480086.47	100	484371.102	4479931.221
23	484197.3878	4481310.999	62	485052.2968	4480058.555	101	484218.135	4480054.663
24	484213.4055	4481321.419	63	485046.8559	4480025.789	102	484127.8488	4480185.144
25	484228.2388	4481371.596	64	485034.5069	4479995.71	103	484070.2179	4480294.936
26	484282.5314	4481392.495	65	485028.715	4479968.09	104	484072.3772	4480381.174
27	484366.2929	4481389.212	66	485016.0772	4479942.039	105	484066.9165	4480386.908
28	484349.9814	4481345.311	67	485000.0694	4479913.179	106	483998.3052	4480534.667
29	484409.7086	4481271.664	68	484989.3474	4479892.142	107	483999.7319	4480542.343
30	484462.4063	4481289.809	69	484988.0985	4479874.981	108	483985.2371	4480616.096
31	484485.4093	4481210.53	70	484981.5034	4479859.503	109	483989.2114	4480648.751
32	484532.9367	4481127.953	71	484974.3147	4479851.323	110	483868.3081	4480748.811
33	484622.1122	4481075.82	72	484950.7315	4479834.841	111	483830.5908	4480794.628
34	484620.2092	4481076.851	73	484937.8406	4479823.421	112	483772.4479	4480829.159
35	484615.3039	4481077.888	74	484921.4138	4479805.309	113	483699.9619	4480874.218
36	484691.5624	4481036.201	75	484898.41	4479785.074	114	483622.8447	4480896.209
37	484754.5313	4480981.19	76	484883.1814	4479780.442	115	483531.1255	4480944.37
38	484848.8287	4480927.463	77	484848.8711	4479781.664	116	483426.0829	4480995.175
39	484958.8389	4480865.341	78	484847.725	4479781.666	117	483398.7263	4481045.006

ZONA ME PËRPARËSI ZHVILLIMIN E EKONOMISË MALORE
ZONA 7, NJËSIA ADMINISTRATIVE KUTË, BASHKIA MALLAKASTËR, QARKU FIER



Njësia Administrative	Zona	Sipërfaqe (ha)
Hekal	Zona 1	79
Kutë dhe Fratar	Zona 2	174
Kutë	Zona 3	367
Qendër Dukas, Aranitas dhe Ngrashan	Zona 4	714
Fratar	Zona 5	234
Kutë	Zona 6	166
Kutë	Zona 7	71
Aranitas	Zona 8	3
Selitet	Zona 9	45
Aranitas	Zona 10	72
Aranitas	Zona 11	71
Qendër Dukas	Zona 12	32
Qendër Dukas	Zona 13	453
Kutë	Zona 14	5
Kutë	Zona 15	7
Hekal	Zona 16	125
Selitet	Zona 17	357
Aranitas	Zona 18	48
Qendër Dukas	Zona 19	18
Qendër Dukas	Zona 20	1



1:8,000

0 0.1 0.1 0.2 0.3 0.4 Km

Legjendë

	Zona me përparësi zhvillimin e ekonomisë malore
	Bashkia Mallakastër
	Ndërfensa
	Izolimes

*Zona 7 ndodhet në territorin e Njësia Administrative Kutë, me sipërfaqe prej 71 ha

**Sistemi Koordinativ: KRGSJSH (Komiza Referuese Gjeodezike Shqiptare) EPSG:8870

Zona 7								
Njësia Administrative Kutë								
Nr.	Koordinata X	Koordinata Y	Nr.	Koordinata X	Koordinata Y	Nr.	Koordinata X	Koordinata Y
1	479271.84	4478892.566	17	480527.655	4478982.812	33	480129.6455	4478496.034
2	479250.395	4478943.099	18	480624.1969	4478901.242	34	480042.9161	4478547.258
3	479334.733	4478994.018	19	480661.8863	4478760.821	35	480042.6456	4478556.44
4	479445.185	4479024.738	20	480627.7788	4478663.165	36	479959.7906	4478614.083
5	479538.931	4479039.05	21	480594.2014	4478560.584	37	479955.8793	4478621.568
6	479569.138	4479064.04	22	480563.7453	4478428.602	38	479842.4864	4478648.132
7	479630.284	4479063.886	23	480554.8058	4478425.072	39	479746.9803	4478640.845
8	479711.146	4479082.586	24	480512.3711	4478367.05	40	479741.0326	4478648.387
9	479784.996	4479128.987	25	480461.574	4478360.194	41	479664.3749	4478678.839
10	479838.375	4479139.517	26	480403.4677	4478421.901	42	479654.3698	4478690.273
11	479915.901	4479130.79	27	480377.3979	4478441.529	43	479539.2604	4478713.484
12	480000.6	4479192.856	28	480324.5301	4478443.445	44	479534.3288	4478726.931
13	480132.155	4479222.939	29	480319.2405	4478443.458	45	479458.5201	4478787.189
14	480241.257	4479240.15	30	480246.9827	4478429.394	46	479352.926	4478838.565
15	480372.273	4479250.79	31	480245.2186	4478431.176	47	479272.3479	4478888.555
16	480513.068	4479122.927	32	480131.4853	4478492.412	48	479271.8402	4478892.566

ZONA ME PËRPARËSI ZHVILLIMIN E EKONOMISË MALORE
ZONA 8, NJËSIA ADMINISTRATIVE ARANITAS, BASHKIA MALLAKASTËR, QARKU FIER



Njësia Administrative

Njësia Administrative	Zona	Sipërfaqe (ha)
Hekal	Zona 1	79
Kutë dhe Fratar	Zona 2	174
Kutë	Zona 3	367
Qendër Dukas, Aranitas dhe Ngraçan	Zona 4	714
Fratar	Zona 5	236
Kutë	Zona 6	166
Kutë	Zona 7	71
Aranitas	Zona 8	3
Selitë	Zona 9	45
Aranitas	Zona 10	72
Aranitas	Zona 11	71
Qendër Dukas	Zona 12	32
Qendër Dukas	Zona 13	453
Kutë	Zona 14	5
Kutë	Zona 15	7
Hekal	Zona 16	125
Selitë	Zona 17	357
Aranitas	Zona 18	48
Qendër Dukas	Zona 19	18
Qendër Dukas	Zona 20	1

Legjendë

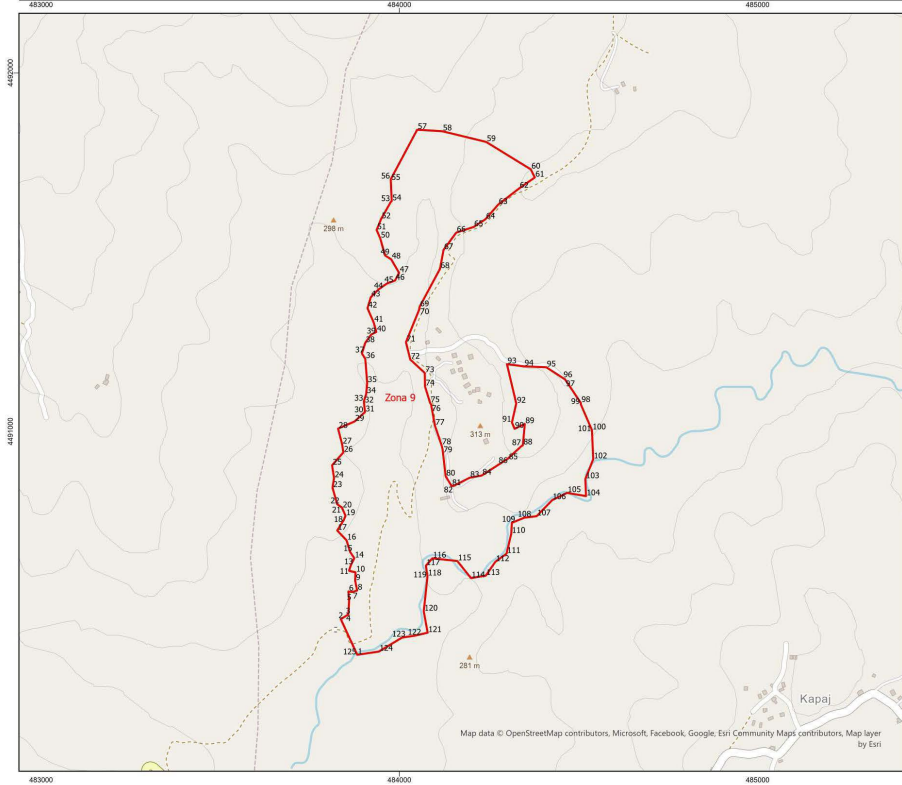
- Zona me përparësi zhvillimin e ekonomisë malore
- Bashkia Mallakastër
- Ndërflesa
- Izolipe
- Kategoritë e Rrjetit Rrugor
- Kategoria F. Rruge Lokale

*Zona 8 ndodhet në territorin e Njësia Administrative Aranitas, me sipërfaqe prej 3 ha

**Sistemi Koordinativ: KRIGJSH (Komiza Referuese Gjeodezike Shqiptare) EPSG: 8870

Zona 8								
Njësia Administrative Aranitas								
Nr.	Koordinata X	Koordinata Y	Nr.	Koordinata X	Koordinata Y	Nr.	Koordinata X	Koordinata Y
1	484151.4148	4496035.929	16	484382.2398	4496495.308	30	484368.3298	4496179.168
2	484172.6823	4496064.395	17	484354.534	4496425.843	31	484388.7145	4496172.017
3	484218.4946	4496095.495	18	484331.2568	4496422.095	32	484397.3413	4496159.013
4	484258.7724	4496109.299	19	484327.3652	4496392.436	33	484398.2699	4496157.179
5	484272.6728	4496140.016	20	484299.2622	4496390.633	34	484391.8683	4496128.803
6	484294.0111	4496145.281	21	484289.7706	4496366.721	35	484367.5854	4496116.512
7	484312.9562	4496169.085	22	484313.6925	4496350.975	36	484351.0639	4496102.663
8	484321.7663	4496206.79	23	484314.005	4496331.049	37	484316.246	4496068.942
9	484316.396	4496260.4	24	484348.3417	4496314.512	38	484291.5258	4496052.592
10	484291.1602	4496331.206	25	484353.4476	4496301.446	39	484246.254	4496014.273
11	484267.2208	4496380.077	26	484345.8403	4496263.852	40	484208.8171	4496006.66
12	484266.2533	4496413.801	27	484354.6066	4496245.852	41	484177.6851	4496013.871
13	484285.5315	4496450.834	28	484360.9113	4496218.46	42	484146.0194	4496016.294
14	484318.9979	4496496.272	29	484365.0595	4496193.099	43	484151.4148	4496035.929
15	484362.4143	4496513.395						

ZONA ME PËRPARËSI ZHVILLIMIN E EKONOMISË MALORE
ZONA 9, NJËSIA ADMINISTRATIVE SELITË, BASHKIA MALLAKASTËR, QARKU FIER





Njësia Administrative	Zona	Sipërfaqe (ha)
Hekal	Zona 1	79
Kutë dhe Fratar	Zona 2	174
Kutë	Zona 3	367
Qendër Dukas, Aranitas dhe Ngraçan	Zona 4	714
Fratar	Zona 5	234
Kutë	Zona 6	166
Kutë	Zona 7	71
Aranitas	Zona 8	3
Selitë	Zona 9	45
Aranitas	Zona 10	72
Aranitas	Zona 11	71
Qendër Dukas	Zona 12	32
Qendër Dukas	Zona 13	453
Kutë	Zona 14	5
Kutë	Zona 15	7
Hekal	Zona 16	125
Selitë	Zona 17	357
Aranitas	Zona 18	48
Qendër Dukas	Zona 19	18
Qendër Dukas	Zona 20	1



1:8,000



Legjendë

- Zona me përparësi zhvillimin e ekonomisë malore
- Bashkia Mallakastër
- Ndërtesa
- Izoipse

Kategoritë e Rrjetit Rrugor

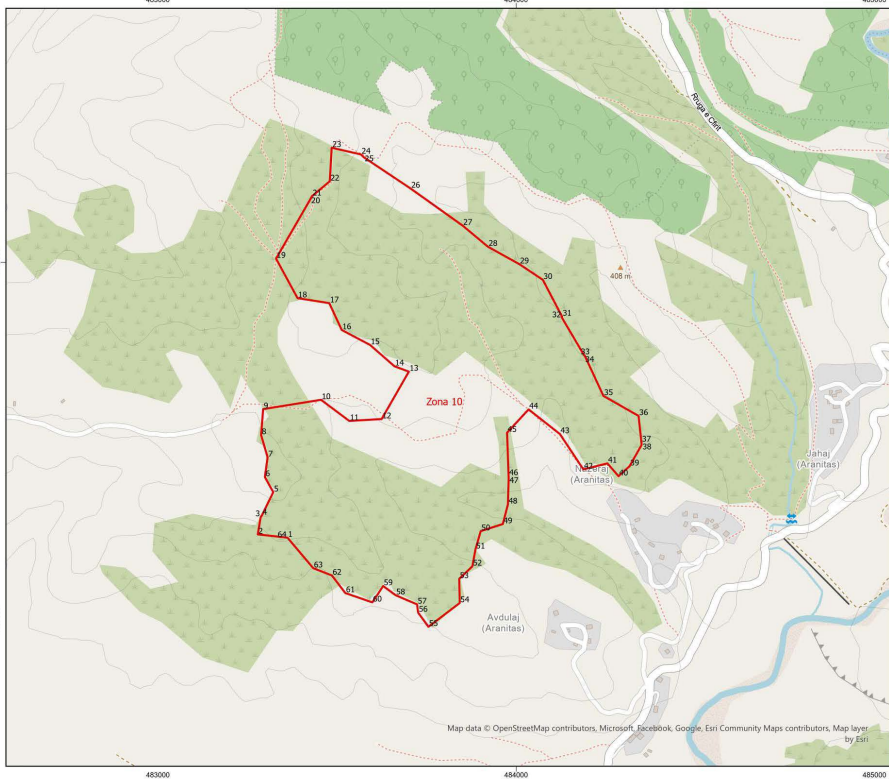
- Kategoria C. Rruga Interurbane Dytësore
- Kategoria F. Rruga Lokale

*Zona 9 ndodhet në territorin e Njësia Administrative Selitë, me sipërfaqe prej 45 ha

**Sistemi Koordinativ: KRQJSH (Komiza Referuese Gjeodezike Shqiptare) EPSG: 8870

Zona 9								
Njësia Administrative Selitë								
Nr.	Koordinata X	Koordinata Y	Nr.	Koordinata X	Koordinata Y	Nr.	Koordinata X	Koordinata Y
1	483882.3481	4490377.455	43	483920.1694	4491374.693	85	484303.0953	4490924.57
2	483836.5045	4490476.757	44	483941.7329	4491396.326	86	484304.8592	4490926.5
3	483857.0107	4490489.674	45	483965.7786	4491413.271	87	484341.1816	4490959.79
4	483857.785	4490490.547	46	483988.0714	4491421.293	88	484344.683	4490961.77
5	483859.6813	4490527.64	47	483999.1155	4491442.703	89	484350.0789	4491021.16
6	483857.6398	4490553.928	48	483977.0955	4491480.313	90	484321.6786	4491007.65
7	483868.6953	4490552.436	49	483960.1363	4491490.973	91	484314.2186	4491025.46
8	483882.1139	4490556.806	50	483946.5677	4491538.721	92	484326.2646	4491078.29
9	483876.5086	4490583.942	51	483936.4514	4491562.108	93	484300.206	4491187.97
10	483877.4422	4490607.344	52	483949.0058	4491592.692	94	484347.6978	4491181.83
11	483861.1318	4490611.239	53	483975.9321	4491640.409	95	484409.9796	4491179.29
12	483859.6077	4490612.21	54	483978.6395	4491642.774	96	484456.1435	4491149.57
13	483864.6429	4490627.371	55	483976.0583	4491699.656	97	484462.8482	4491144.88
14	483874.1074	4490646.936	56	483975.8281	4491703.363	98	484506.3093	4491080.07
15	483862.6269	4490663.994	57	484049.6767	4491841.725	99	484506.5707	4491075.66
16	483852.5047	4490696.646	58	484119.971	4491837.496	100	484537.4931	4491004.02
17	483826.4356	4490724.061	59	484242.201	4491807.748	101	484537.6904	4490999.88
18	483844.7385	4490753.04	60	484366.837	4491731.151	102	484541.1505	4490923.03
19	483849.6285	4490765.238	61	484377.95	4491708.596	103	484519.0974	4490867.58
20	483840.2527	4490786.357	62	484334.2187	4491677.967	104	484520.9285	4490820.02
21	483839.4964	4490788.364	63	484275.494	4491632.593	105	484467.9251	4490828.96
22	483826.4802	4490797.143	64	484240.1651	4491591.987	106	484426.8253	4490808.9
23	483813.382	4490843.029	65	484207.0378	4491570.453	107	484383.1387	4490763.97
24	483817.5755	4490870.572	66	484158.7301	4491554.853	108	484349.1207	4490759.9
25	483812.1414	4490905.908	67	484123.3348	4491506.658	109	484314.0482	4490745.55
26	483843.6024	4490941.806	68	484113.3459	4491453.79	110	484312.3761	4490715.42
27	483840.1607	4490964.431	69	484056.1308	4491347.266	111	484299.1368	4490659.47
28	483828.813	4491008.153	70	484055.5435	4491340.581	112	484267.7349	4490636.64
29	483874.9141	4491028.126	71	484018.2982	4491249.211	113	484241.284	4490598.17
30	483901.1032	4491051.699	72	484030.4588	4491200.739	114	484199.8767	4490591.32
31	483903.9046	4491054.084	73	484070.8615	4491163.426	115	484161.6625	4490638.96
32	483901.4764	4491079.104	74	484071.4799	4491126.15	116	484091.9182	4490646.38
33	483901.0002	4491084.011	75	484085.714	4491079.971	117	484073.9521	4490625.83
34	483907.4547	4491105.5	76	484088.5114	4491075.556	118	484078.4036	4490596.58
35	483910.1193	4491135.949	77	484099.1435	4491016.525	119	484078.0004	4490591.61
36	483904.8299	4491202.982	78	484117.5867	4490962.322	120	484068.0194	4490498.49
37	483895.4486	4491217.546	79	484120.3476	4490951.389	121	484078.9452	4490439.05
38	483904.6155	4491247.27	80	484129.3257	4490874.966	122	484042.2675	4490430.55
39	483921.3497	4491270.461	81	484145.7547	4490848.492	123	484007.6258	4490425.52
40	483935.6579	4491277.661	82	484151.3265	4490848.478	124	483942.799	4490386.4
41	483928.2599	4491304.259	83	484196.1598	4490871.119	125	483882.3481	4490377.46
42	483911.0202	4491343.797	84	484230.1174	4490877.492			

ZONA ME PËRPARËSI ZHVILLIMIN E EKONOMISË MALORE
ZONA 10, NJËSIA ADMINISTRATIVE ARANITAS, BASHKIA MALLAKASTËR, QARKU FIER



Njësia Administrative	Zona	Sipërfaqe (ha)
Hekal	Zona 1	79
Kutë dhe Fratar	Zona 2	174
Kutë	Zona 3	367
Qendër Dukas, Aranitas dhe Ngraçan	Zona 4	714
Fratar	Zona 5	234
Kutë	Zona 6	166
Kutë	Zona 7	71
Aranitas	Zona 8	3
Sellitë	Zona 9	45
Aranitas	Zona 10	72
Aranitas	Zona 11	71
Qendër Dukas	Zona 12	32
Qendër Dukas	Zona 13	453
Kutë	Zona 14	5
Kutë	Zona 15	7
Hekal	Zona 16	125
Sellitë	Zona 17	357
Aranitas	Zona 18	48
Qendër Dukas	Zona 19	18
Qendër Dukas	Zona 20	1

Legjendë

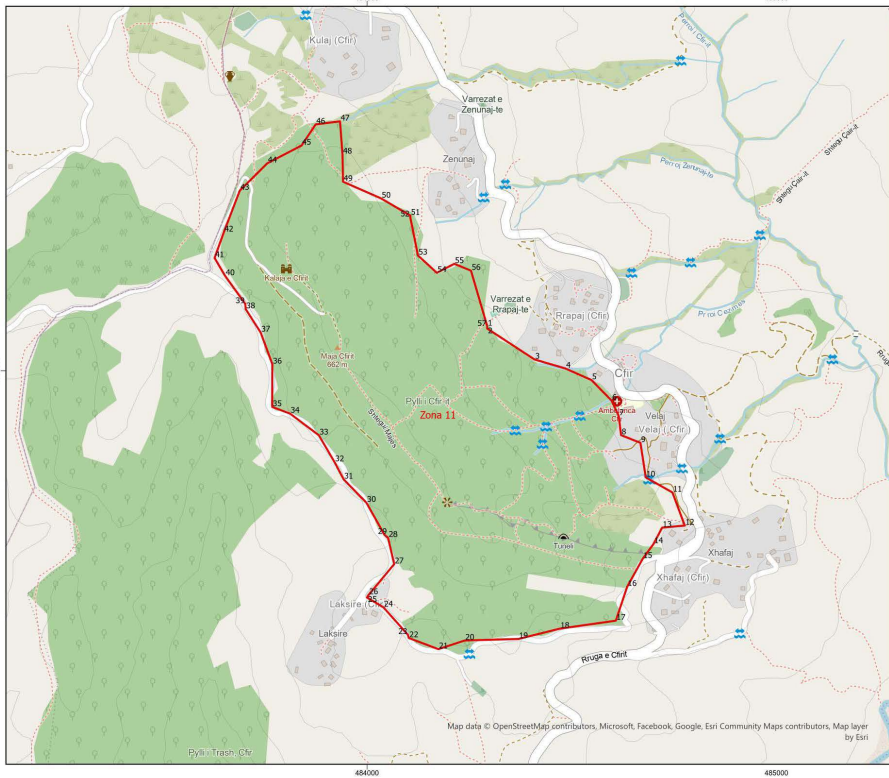
- Zona me përparësi zhvillimin e ekonomisë malore
- Bashkia Mallakastër
- Ndërflesa
- Izolpse
- Kategorië e Rrjetit Rrugor
- Kategorië F. Rruge Lokale

*Zona 10 ndodhet në territorin e Njësia Administrative Aranitas, me sipërfaqe prej 72 ha

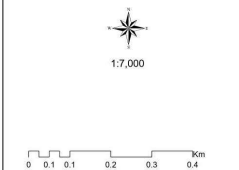
**Sistemi Koordinativ: KRIGJSH (Komiza Referuese Gjyqendike Shqiptare) EPSG: 8870

Zona 10								
Njësia Administrative Aranitas								
Nr.	Koordinata X	Koordinata Y	Nr.	Koordinata X	Koordinata Y	Nr.	Koordinata X	Koordinata Y
1	483361.6063	4497231.65	23	483485.0406	4498319.123	44	484034.6307	4497589.296
2	483278.6296	4497240.7	24	483566.8217	4498300.376	45	483974.5979	4497524.277
3	483286.853	4497289.386	25	483574.7468	4498292.521	46	483978.83	4497403.756
4	483290.0524	4497293.356	26	483705.2472	4498205.417	47	483978.8832	4497393.115
5	483321.9866	4497358.469	27	483850.567	4498101.923	48	483976.9542	4497324.397
6	483298.4738	4497400.728	28	483921.1233	4498043.042	49	483962.7497	4497269.745
7	483306.2263	4497455.627	29	484008.9961	4497994.347	50	483901.0644	4497249.896
8	483287.9833	4497517.9	30	484074.3555	4497950.799	51	483886.465	4497199.365
9	483293.7609	4497590.135	31	484127.9894	4497848.508	52	483877.7144	4497151.645
10	483455.3391	4497616.092	32	484127.8634	4497845.048	53	483841.0457	4497116.858
11	483534.0423	4497557.192	33	484189.8118	4497739.972	54	483842.4789	4497049.417
12	483624.4932	4497562.431	34	484191.1007	4497739.953	55	483755.1194	4496983.137
13	483700.4726	4497694.692	35	484243.5655	4497626.967	56	483726.2364	4497022.803
14	483660.1792	4497709.634	36	484341.6161	4497571.269	57	483723.4197	4497045.525
15	483592.1572	4497769.129	37	484349.6574	4497497.202	58	483663.3898	4497071.227
16	483513.0868	4497810.855	38	484350.0977	4497490.12	59	483628.7071	4497096.776
17	483478.3991	4497885.642	39	484316.598	4497431.001	60	483598.4849	4497051.222
18	483389.672	4497899.651	40	484285.7716	4497403.123	61	483523.0818	4497077.193
19	483329.7282	4498009.97	41	484254.7359	4497438.757	62	483485.6809	4497126.16
20	483425.0724	4498174.735	42	484187.6034	4497422.093	63	483433.5662	4497146.558
21	483429.9317	4498183.796	43	484122.0937	4497520.612	64	483361.6063	4497231.65
22	483479.7337	4498225.586						

ZONA ME PËRPARËSI ZHVILLIMIN E EKONOMISË MALORE
ZONA 11, NJËSIA ADMINISTRATIVE ARANITAS, BASHKIA MALLAKASTËR, QARKU FIER



Njësia Administrative	Zona	Sipërfaqe (ha)
Hekal	Zona 1	79
Kutë dhe Fratar	Zona 2	174
Kutë	Zona 3	367
Qendër Dukas, Aranitas dhe Ngraçan	Zona 4	714
Fratar	Zona 5	234
Kutë	Zona 6	166
Kutë	Zona 7	71
Aranitas	Zona 8	3
Sellitë	Zona 9	45
Aranitas	Zona 10	72
Aranitas	Zona 11	71
Qendër Dukas	Zona 12	32
Qendër Dukas	Zona 13	453
Kutë	Zona 14	5
Aranitas	Zona 15	7
Hekal	Zona 16	125
Sellitë	Zona 17	357
Aranitas	Zona 18	48
Qendër Dukas	Zona 19	18
Qendër Dukas	Zona 20	1

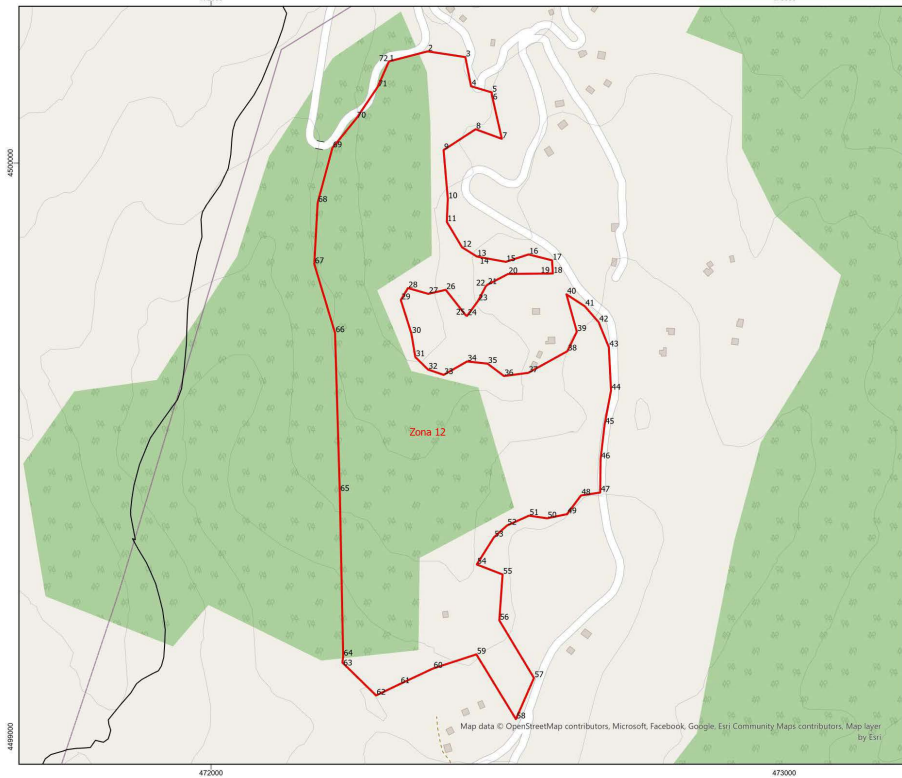


Legjendë
 Zona me përparësi zhvillimin e ekonomisë malore
 Bashkia Mallakastër
 Ndërflesa
 Izolpse
 Kategoritë e Rrjetit Rrugor
 Kategoria F. Rruge Lokale

*Zona 11 ndodhet në territorin e Njësia Administrative Aranitas, me sipërfaqe prej 71 ha
 **Sistemi Koordinativ: KRIGJSH (Komiza Referuese Gjeodezike Shqiptare) EPSG: 6870

Zona 11								
Njësia Administrative Aranitas								
Nr.	Koordinata X	Koordinata Y	Nr.	Koordinata X	Koordinata Y	Nr.	Koordinata X	Koordinata Y
1	484293.6237	4500108.27	20	484238.7015	4499341.727	39	483702.6424	4500162.948
2	484293.2814	4500103.021	21	484174.1622	4499320.569	40	483653.3162	4500231.403
3	484409.173	4500027.404	22	484101.9505	4499347.771	41	483627.5984	4500275.205
4	484484.7604	4500005.318	23	484099.9328	4499355.558	42	483650.2022	4500337.912
5	484548.2291	4499977.297	24	484040.0166	4499422.642	43	483689.1525	4500439.555
6	484597.3942	4499926.954	25	483999.8488	4499446.707	44	483756.424	4500506.162
7	484614.7567	4499889.625	26	484003.6796	4499452.73	45	483840.0203	4500549.564
8	484620.4752	4499842.82	27	484066.3229	4499527.993	46	483874.5653	4500601.083
9	484667.7841	4499824.037	28	484051.2217	4499592.607	47	483933.9711	4500608.529
10	484680.7678	4499739.8	29	484042.9768	4499598.943	48	483939.9893	4500527.912
11	484745.9423	4499702.919	30	483998.332	4499678.056	49	483941.3627	4500461.228
12	484776.0184	4499622.19	31	483942.8828	4499734.894	50	484034.4126	4500420.391
13	484720.74	4499617.098	32	483920.5803	4499777.049	51	484105.9444	4500378.488
14	484699.8632	4499577.47	33	483882.2917	4499842.48	52	484105.5749	4500374.544
15	484673.3391	4499541.131	34	483811.8686	4499895.389	53	484124.365	4500281.279
16	484635.3964	4499472.843	35	483768.2667	4499911.697	54	484170.5151	4500238.94
17	484607.6506	4499390.03	36	483768.7565	4500015.655	55	484213.1941	4500260.889
18	484470.7282	4499370.595	37	483740.155	4500093.4	56	484253.9172	4500244.115
19	484369.6976	4499345.399	38	483703.4618	4500150.433	57	484293.6237	4500108.27

ZONA ME PËRPARËSI ZHVILLIMIN E EKONOMISË MALORE
ZONA 12, NJËSIA ADMINISTRATIVE QENDËR DUKAS, BASHKIA MALLAKASTËR, QARKU FIER



Njësia Administrative	Zona	Sipërfaqe (ha)
Hekal	Zona 1	79
Kutë dhe Fratar	Zona 2	174
Kutë	Zona 3	367
Qendër Dukas, Arantis dhe Ngraçan	Zona 4	714
Fratar	Zona 5	234
Kutë	Zona 6	166
Kutë	Zona 7	71
Arantis	Zona 8	3
Sellitë	Zona 9	45
Arantis	Zona 10	72
Arantis	Zona 11	71
Qendër Dukas	Zona 12	32
Qendër Dukas	Zona 13	453
Kutë	Zona 14	5
Kutë	Zona 15	7
Hekal	Zona 16	125
Sellitë	Zona 17	357
Arantis	Zona 18	48
Qendër Dukas	Zona 19	18
Qendër Dukas	Zona 20	1

1:5,000

0 0.1 0.2 0.2 0.3 Km

Legjendë

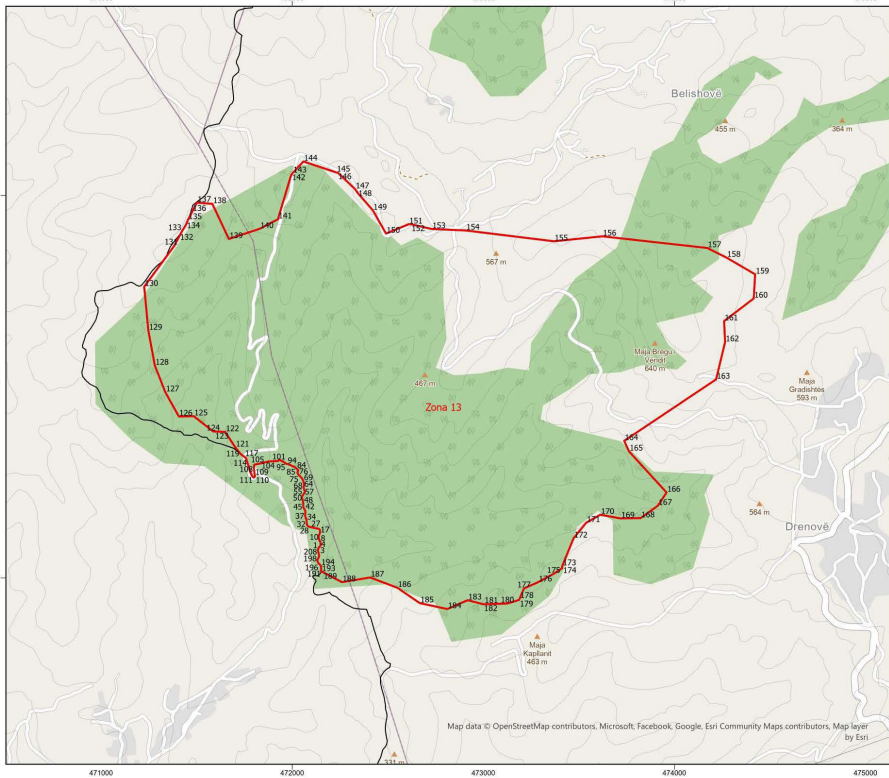
- Zona me përparësi zhvillimin e ekonomisë malore
- Bashkia Mallakastër
- Ndërfryesa
- Izolpse
- Kategoritë e Rrjetit Rrugor
- Kategoria F. Rruge Lokale

*Zona 12 ndodhet në territorin e Njësise Administrative Qendër Dukas, me sipërfaqe prej 32 ha

**Sistemi Koordinativ: KRIGJSH (Komiza Referuese Gjeodezike Shqiptare) EPSG: 6870

Zona 12								
Njësia Administrative Qendër Dukas								
Nr.	Koordinata X	Koordinata Y	Nr.	Koordinata X	Koordinata Y	Nr.	Koordinata X	Koordinata Y
1	472310.3121	4500176.929	25	472444.3009	4499734.469	49	472621.0442	4499387.876
2	472377.7937	4500194.503	26	472409.4046	4499778.871	50	472586.1796	4499380.606
3	472443.6186	4500184.499	27	472379.0601	4499771.851	51	472554.7127	4499385.236
4	472453.5902	4500133.689	28	472343.4876	4499781.878	52	472516.2347	4499367.994
5	472489.6158	4500122.997	29	472331.0133	4499761.052	53	472493.3887	4499347.374
6	472490.1654	4500117.125	30	472349.537	4499702.477	54	472463.5914	4499300.143
7	472507.2811	4500042.008	31	472356.3024	4499661.763	55	472508.6087	4499282.672
8	472461.6046	4500058.765	32	472378.3292	4499640.008	56	472502.9047	4499202.706
9	472405.6457	4500022.441	33	472405.7996	4499630.641	57	472563.3193	4499102.289
10	472413.0228	4499937.314	34	472446.6226	4499654.009	58	472531.83	4499030.549
11	472411.2674	4499897.38	35	472482.3514	4499650.166	59	472462.8496	4499143.426
12	472437.8306	4499853.003	36	472510.9656	4499628.604	60	472387.2035	4499118.796
13	472463.5357	4499836.99	37	472553.3724	4499634.106	61	472329.9268	4499091.972
14	472467.7616	4499836.051	38	472621.5591	4499671.837	62	472287.8707	4499071.838
15	472514.1902	4499827.612	39	472638.1072	4499705.936	63	472229.2293	4499129.118
16	472554.0392	4499840.574	40	472620.0015	4499770.947	64	472230.4751	4499139.912
17	472594.8827	4499830.254	41	472651.9565	4499750.217	65	472224.5499	4499426.872
18	472596.2613	4499807.287	42	472676.1975	4499722.39	66	472216.2727	4499703.733
19	472592.0247	4499807.294	43	472693.9686	4499678.791	67	472180.0737	4499823.823
20	472518.2258	4499806.511	44	472697.8106	4499603.359	68	472185.9667	4499930.716
21	472482.041	4499787.648	45	472686.6071	4499544.072	69	472211.7262	4500026.124
22	472479.3175	4499784.974	46	472679.5503	4499483.659	70	472253.5424	4500077.607
23	472465.7594	4499759.43	47	472678.9928	4499425.549	71	472290.625	4500132.481
24	472446.7078	4499733.613	48	472645.3496	4499420.375	72	472310.3121	4500176.929

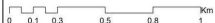
ZONA ME PËRPARËSI ZHVILLIMIN E EKONOMISË MALORE
ZONA 13, NJËSIA ADMINISTRATIVE QENDËR DUKAS, BASHKIA MALLAKASTËR, QARKU FIER



Njësia Administrative	Zona	Sipërfaqe (ha)
Hekal	Zona 1	79
Kutë dhe Fratar	Zona 2	174
Kutë	Zona 3	367
Qendër Dukas, Aranitas dhe Ngraçan	Zona 4	714
Fratar	Zona 5	234
Kutë	Zona 6	166
Kutë	Zona 7	71
Aranitas	Zona 8	3
Selitë	Zona 9	45
Aranitas	Zona 10	72
Aranitas	Zona 11	71
Qendër Dukas	Zona 12	32
Qendër Dukas	Zona 13	453
Kutë	Zona 14	5
Kutë	Zona 15	7
Hekal	Zona 16	125
Selitë	Zona 17	357
Aranitas	Zona 18	48
Qendër Dukas	Zona 19	18
Qendër Dukas	Zona 20	1



1:15,000



Legjendë

- Zona me përparësi zhvillimin e ekonomisë malore
- Bashkia Mallakastër
- Ndërflesa
- Izolpse
- Kategoritë e Rrjetit Rrugor
- Kategoritë F. Rruge Lokale

*Zona 13 ndodhet në territorin e Njësia Administrative Qendër Dukas, me sipërfaqe prej 453 ha

**Sistemi Koordinativ: KRIGJSH (Komiza Referuese Gjeodezike Shqiptare) EPSG: 8870

Zona 13								
Njësia Administrative Qendër Dukas								
Nr.	Koordinata X	Koordinata Y	Nr.	Koordinata X	Koordinata Y	Nr.	Koordinata X	Koordinata Y
1		4496152.924	72	472049.3788	4496523.297	142	471993.84	4498105.423
2	472138.6194	4496158.011	73	472046.1641	4496526.702	143	472002.0814	4498116.805
3	472142.1379	4496162.815	74	472041.8788	4496531.152	144	472058.5523	4498177.956
4	472145.6609	4496167.222	75	472035.7291	4496536.64	145	472231.8347	4498120.198
5	472148.4019	4496170.561	76	472033.0498	4496539.521	146	472237.8882	4498120.187
6	472149.1176	4496177.451	77	472029.8171	4496544.513	147	472328.9779	4498033.269
7	472148.2456	4496184.322	78	472028.1842	4496548.465	148	472341.6631	4498014.596
8	472146.0654	4496189.855	79	472027.6188	4496551.634	149	472422.1252	4497922.298
9	472144.4415	4496193.013	80	472028.8818	4496556.942	150	472490.7319	4497800.836
10	472142.0177	4496196.691	81	472031.4741	4496561.736	151	472609.4842	4497849.722
11	472139.8135	4496204.341	82	472031.453	4496563.588	152	472622.3202	4497849.699
12	472138.9684	4496208.831	83	472028.5089	4496566.466	153	472729.9209	4497824.867
13	472138.3881	4496213.324	84	472024.4944	4496570.39	154	472907.3953	4497817.206
14	472138.316	4496219.675	85	472020.2151	4496574.312	155	473369.7197	4497760.608
15	472140.6255	4496226.053	86	472015.4066	4496578.227	156	473623.1868	4497786.551
16	472142.9621	4496230.05	87	472011.1394	4496581.09	157	474172.1488	4497725.551
17	472144.7635	4496234.57	88	472005.8226	4496583.147	158	474273.3245	4497675.092
18	472145.434	4496245.429	89	471999.4444	4496585.457	159	474422.7092	4497587.923
19	472145.3799	4496250.192	90	471994.3863	4496588.046	160	474415.6755	4497461.721
20	472142.6825	4496254.661	91	471989.8544	4496590.906	161	474260.3344	4497343.193
21	472137.3567	4496257.512	92	471984.273	4496592.959	162	474265.694	4497233.875
22	472131.5198	4496258.769	93	471979.2239	4496594.755	163	474218.4273	4497038.351
23	472124.6333	4496259.22	94	471972.8547	4496596.27	164	473737.4169	4496717.128
24	472116.1409	4496261.24	95	471967.2703	4496598.589	165	473762.6602	4496661.862
25	472109.5101	4496262.489	96	471964.0737	4496600.405	166	473959.26	4496446.903
26	472103.6671	4496264.275	97	471959.2712	4496603.791	167	473913.9194	4496378.175
27	472096.5039	4496265.782	98	471954.4717	4496606.913	168	473823.9133	4496313.254
28	472090.3993	4496267.3	99	471947.8077	4496611.072	169	473718.7415	4496311.357
29	472083.2211	4496270.13	100	471943.0233	4496612.87	170	473612.6051	4496330.511
30	472079.4681	4496274.322	101	471939.0298	4496614.942	171	473538.5641	4496289.045
31	472076.2143	4496281.166	102	471934.7595	4496618.07	172	473472.5636	4496207.619
32	472075.61	4496287.776	103	471923.6061	4496611.557	173	473413.2901	4496062.181
33	472074.9965	4496295.18	104	471874.1109	4496608.878	174	473412.3458	4496050.928
34	472074.6597	4496301.528	105	471835.6126	4496599.455	175	473368.4274	4496021.943
35	472073.2704	4496307.335	106	471801.4913	4496592.391	176	473286.8092	4495977.928
36	472070.5428	4496314.45	107	471799.8542	4496581.829	177	473213.0863	4495945.37
37	472068.0439	4496324.744	108	471799.125	4496577.125	178	473190.0499	4495891.728
38	472067.7071	4496331.092	109	471801.4913	4496555.141	179	473187.7192	4495885.357
39	472068.4259	4496337.717	110	471805.1513	4496531.054	180	473126.2388	4495866.425
40	472069.4183	4496343.551	111	471798.8748	4496524.634	181	473059.5524	4495864.438
41	472068.5612	4496349.099	112	471789.8906	4496532.997	182	473000.9865	4495862.438
42	472066.6367	4496355.429	113	471780.7813	4496552.366	183	472918.282	4495883.724
43	472064.2069	4496359.636	114	471768.0216	4496594.973	184	472811.7767	4495837.625
44	472061.5155	4496363.576	115	471765.138	4496604.331	185	472667.516	4495868.529
45	472057.7324	4496370.414	116	471758.7922	4496624.923	186	472549.6736	4495949.047

46	472057.6482	4496377.824	117	471749.2786	4496634.391	187	472407.6266	4496002.648
47	472057.567	4496384.969	118	471734.0229	4496644.113	188	472260.3161	4495978.21
48	472058.0422	4496389.739	119	471728.4391	4496651.245	189	472161.1821	4496030.134
49	472057.4468	4496395.554	120	471726.417	4496652.302	190	472151.1545	4496033.097
50	472055.2485	4496402.676	121	471701.5476	4496683.743	191	472151.4387	4496043.026
51	472053.8262	4496411.393	122	471648.8252	4496763.902	192	472151.3305	4496052.552
52	472051.9316	4496415.077	123	471632.2182	4496764.518	193	472151.2538	4496059.301
53	472050.5513	4496420.09	124	471586.5793	4496766.214	194	472148.4076	4496065.223
54	472051.0085	4496426.447	125	471484.4754	4496846.14	195	472143.9779	4496070.731
55	472054.9148	4496432.05	126	471406.7914	4496844.055	196	472140.3694	4496073.866
56	472058.5536	4496437.914	127	471335.4533	4496971.777	197	472136.7517	4496077.795
57	472061.4194	4496441.917	128	471280.8114	4497111.333	198	472133.098	4496084.9
58	472063.7681	4496444.855	129	471246.784	4497294.064	199	472132.2183	4496092.433
59	472065.837	4496449.113	130	471225.2658	4497523.428	200	472132.1597	4496097.593
60	472064.974	4496455.19	131	471383.6867	4497738.306	201	472134.8888	4496101.991
61	472063.0674	4496459.933	132	471407.4227	4497783.566	202	472137.2344	4496105.194
62	472060.8872	4496465.466	133	471423.8139	4497814.82	203	472139.562	4496109.984
63	472059.9371	4496470.793	134	471443.1417	4497844.816	204	472140.6988	4496114.761
64	472059.4739	4496473.39	135	471454.0016	4497872.382	205	472140.2341	4496120.711
65	472060.4151	4496483.723	136	471476.7386	4497915.737	206	472138.9757	4496126.652
66	472061.6632	4496490.353	137	471501.2477	4497962.471	207	472136.9323	4496131.789
67	472061.0617	4496496.699	138	471581.8054	4497956.331	208	472135.2723	4496138.123
68	472058.6229	4496501.7	139	471668.3714	4497772.86	209	472135.1821	4496146.062
69	472057.7659	4496507.248	140	471829.5867	4497825.855	210	472135.9039	4496152.422
70	472055.303	4496514.366	141	471925.1454	4497875.985	211	472136.1482	4496152.924
71	472052.0702	4496519.358						

ZONA ME PËRPARËSI ZHVILLIMIN E EKONOMISË MALORE
ZONA 14, NJËSIA ADMINISTRATIVE KUTË, BASHKIA MALLAKASTËR, QARKU FIER



Njësia Administrative	Zona	Sipërfaqe (ha)
Hiçal	Zona 1	79
Kutë dhe Fratar	Zona 2	174
Kutë	Zona 3	367
Qendër Dukas, Aranitas dhe Ngraçan	Zona 4	714
Fratar	Zona 5	234
Kutë	Zona 6	166
Kutë	Zona 7	71
Aranitas	Zona 8	3
Selitë	Zona 9	45
Aranitas	Zona 10	72
Aranitas	Zona 11	71
Qendër Dukas	Zona 12	32
Qendër Dukas	Zona 13	423
Kutë	Zona 14	5
Kutë	Zona 15	7
Hiçal	Zona 16	125
Selitë	Zona 17	357
Aranitas	Zona 18	48
Qendër Dukas	Zona 19	18
Qendër Dukas	Zona 20	1

Legjendë

- Zona me përparësi zhvillimin e ekonomisë malore
- Bashkia Mallakastër
- Ndërfensa
- Izoipsa
- Kategorië e Rrjetit Rrugor
- Kategorië F. Rruge Lokale

*Zona 14 ndodhet në territorin e Njësia Administrative Kutë, me sipërfaqe prej 5 ha

**Sistemi Koordinativ: KRGSJSH (Korniza Referuese Qendrore Shqiptare) EPSG 6870


Zona 14		
Njësia Administrative Kutë		
Nr.	Koordinata X	Koordinata Y
1	477691.6091	4486264.381
2	477683.361	4486204.965
3	477681.8288	4486171.312
4	477676.4172	4486138.675
5	477644.6671	4486076.702
6	477613.3401	4486035.387
7	477593.4224	4486012.072
8	477574.3019	4485996.601
9	477557.4285	4485965.009
10	477528.3796	4485920.641
11	477483.4373	4485840.463
12	477451.1715	4485770.255
13	477432.0688	4485741.436
14	477402.4323	4485728.047
15	477351.455	4485723.995
16	477364.9447	4485784.442
17	477386.1476	4485825.116
18	477401.6902	4485845.768
19	477442.3628	4485830.381
20	477491.4143	4485939.551
21	477488.7973	4485968.932
22	477501.3719	4486005.716
23	477555.5842	4486178.067
24	477600.3802	4486303.485
25	477691.6091	4486264.381

ZONA ME PËRPARËSI ZHVILLIMIN E EKONOMISË MALORE
ZONA 15, NJËSIA ADMINISTRATIVE KUTË, BASHKIA MALLAKASTËR, QARKU FIER





Njësia Administrative	Zona	Sipërfaqe (ha)
Hekal	Zona 1	79
Kutë dhe Fratar	Zona 2	174
Kutë	Zona 3	367
Qendër Dukas, Aranitas dhe Ngrazan	Zona 4	714
Fratar	Zona 5	234
Kutë	Zona 6	166
Kutë	Zona 7	71
Aranitas	Zona 8	5
Selinë	Zona 9	45
Aranitas	Zona 10	72
Aranitas	Zona 11	71
Qendër Dukas	Zona 12	32
Qendër Dukas	Zona 13	453
Kutë	Zona 14	5
Kutë	Zona 15	7
Hekal	Zona 16	125
Selinë	Zona 17	357
Aranitas	Zona 18	48
Qendër Dukas	Zona 19	18
Qendër Dukas	Zona 20	1



1:3,000



Legjendë

- Zona me përparësi zhvillimin e ekonomisë malore
- Bashkia Mallakastër
- Ndërfesa
- Izoipse

Kategoritë e Rrjetit Rrugor
Kategoria F. Rruge Lokale

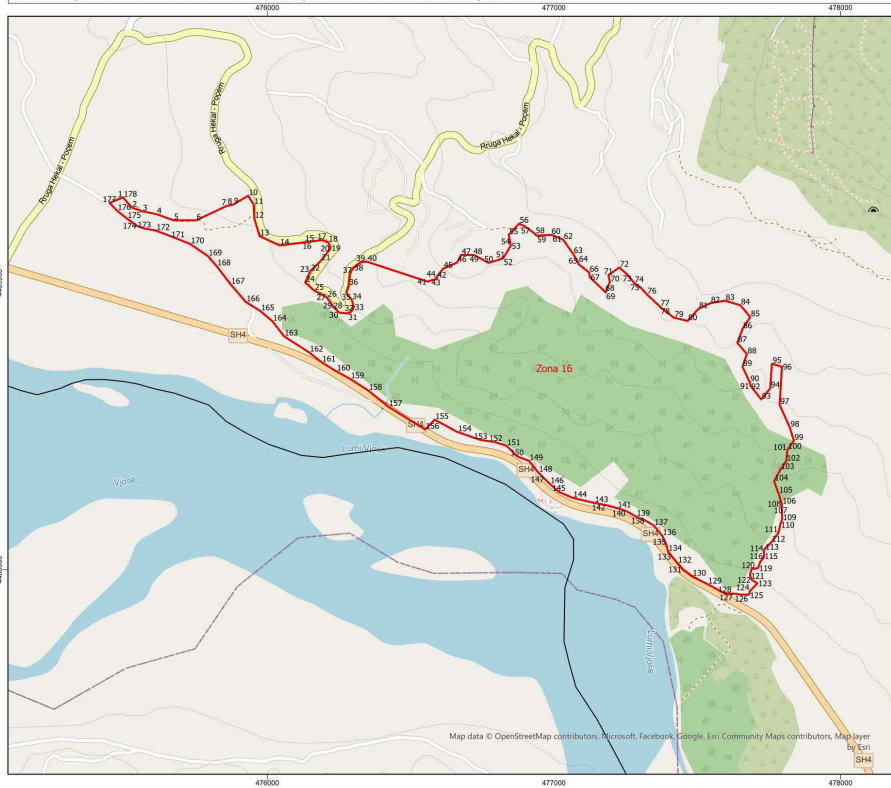
*Zona 15 rindahet në territorin e Njësia Administrative Kutë, me sipërfaqe prej 7 ha

**Sistemi Koordinativ: KRGJSH (Komiza Referuese Gjeodizike Shqiptare) EPSG:6870

Map data © OpenStreetMap contributors, Microsoft, Facebook, Google, Esri Community Maps contributors, Map layer by Esri

Zona 15		
Njësia Administrative Kutë		
Nr.	Koordinata X	Koordinata Y
1	477654.9061	4486059.183
2	477675.2944	4486076.99
3	477739.2746	4486118.884
4	477820.6828	4486115.854
5	477943.8793	4486095.23
6	477921.1186	4486003.735
7	477850.2831	4485998.02
8	477810.3023	4485971.415
9	477800.4952	4485932.442
10	477772.0348	4485901.758
11	477759.3736	4485864.253
12	477737.1284	4485852.321
13	477737.1158	4485853.067
14	477694.8371	4485869.735
15	477641.41	4485885.908
16	477594.8258	4485835.715
17	477552.5069	4485808.254
18	477512.2559	4485796.959
19	477486.4951	4485788.55
20	477500.0066	4485819.945
21	477501.2972	4485821.391
22	477530.7436	4485890.085
23	477583.8184	4485973.743
24	477635.5626	4486042.501
25	477654.9061	4486059.183

ZONA ME PËRPARËSI ZHVILLIMIN E EKONOMISË MALORE
ZONA 16, NJËSIA ADMINISTRATIVE HEKAL, BASHKIA MALLAKASTËR, QARKU FIER



Njësia Administrative	Zona	Sipërfaqe (ha)
Hekal	Zona 1	79
Kutë dhe Fratar	Zona 2	174
Kutë	Zona 3	367
Qendër Dukas, Aranitas dhe Ngrazan	Zona 4	714
Fratar	Zona 5	234
Kutë	Zona 6	166
Aranitas	Zona 7	71
Aranitas	Zona 8	3
Selite	Zona 9	45
Aranitas	Zona 10	72
Aranitas	Zona 11	71
Qendër Dukas	Zona 12	32
Qendër Dukas	Zona 13	453
Kutë	Zona 14	5
Kutë	Zona 15	7
Hekal	Zona 16	125
Selite	Zona 17	357
Aranitas	Zona 18	48
Qendër Dukas	Zona 19	18
Qendër Dukas	Zona 20	1

1:10,000

Legjendë

- Zona me përparësi zhvillimin e ekonomisë malore
- Bashkia Mallakastër
- Ndërtesa
- Izolpse

Kategoritë e Rrjetit Rrugor

- Kategoria C. Rruge Interurbane Dytësore
- Kategoria F. Rruge Lokale

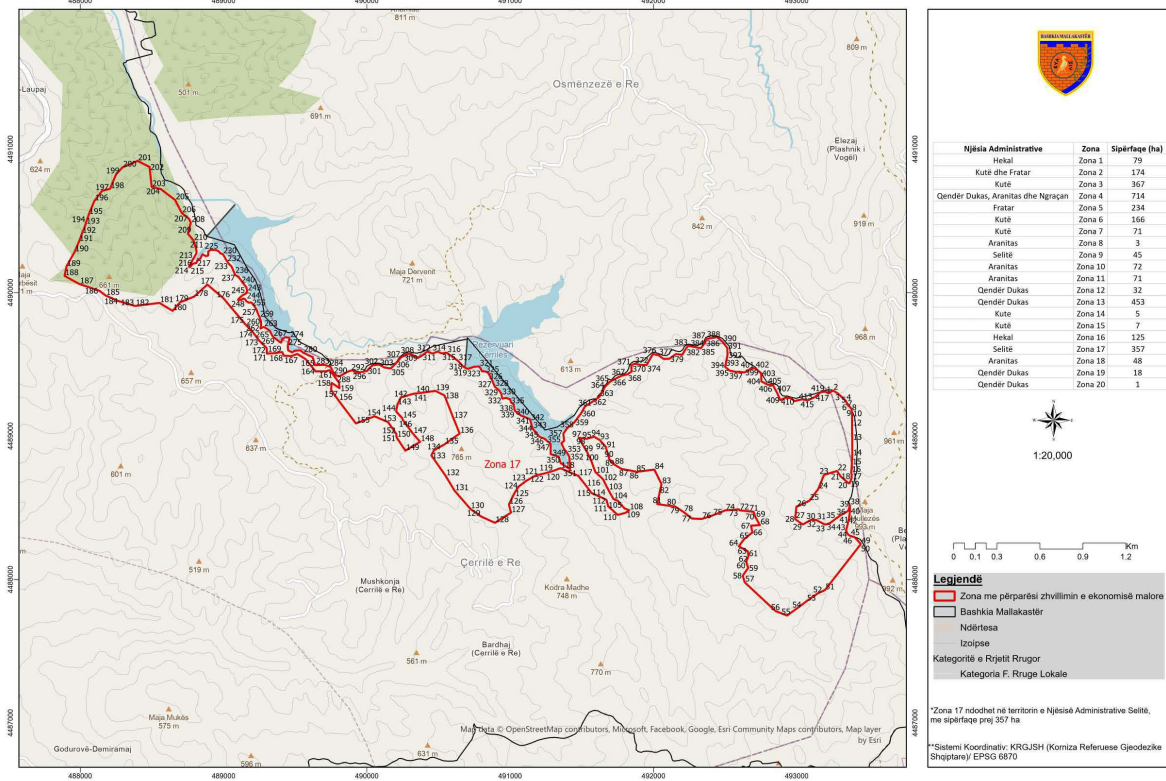
*Zona 16 ndodhet në territorin e Njësia Administrative Hekal, me sipërfaqe prej 125 ha

**Sistemi Koordinativ: KRGJSH (Komiza Referuese Gjendëzike Shqiptare)/ EPSG 6870

Zona 16								
Njësia Administrative Hekal								
Nr.	Koordinata X	Koordinata Y	Nr.	Koordinata X	Koordinata Y	Nr.	Koordinata X	Koordinata Y
1	475496.6279	4489297.634	61	476993.3157	4489166.444	120	477689.46	4488002.239
2	475527.2972	4489262.366	62	477032.3982	4489150.637	121	477684.1832	4487982.406
3	475563.4313	4489249.676	63	477066.9629	4489100.954	122	477690.1193	4487964.673
4	475612.7999	4489239.574	64	477085.3356	4489071.449	123	477710.2203	4487952.404
5	475672.1376	4489218.133	65	477085.3915	4489065.651	124	477684.2756	4487925.804
6	475751.3205	4489217.917	66	477122.6822	4489036.317	125	477680.5958	4487913.37
7	475858.7083	4489268.236	67	477125.0459	4489019.555	126	477656.2534	4487912.816
8	475871.3151	4489270.753	68	477177.9301	4488969.875	127	477626.7378	4487916.685
9	475881.607	4489273.283	69	477180.3351	4488965.996	128	477596.4948	4487917.395
10	475933.2401	4489303.441	70	477195.1965	4489002.624	129	477536.7519	4487949.249
11	475952.6517	4489272.237	71	477190.3215	4489026.837	130	477482.1836	4487976.605
12	475954.5356	4489224.696	72	477227.9092	4489053.539	131	477448.9581	4488001.031
13	475973.0464	4489162.868	73	477255.6653	4489029.394	132	477431.0723	4488022.33
14	476043.198	4489130.37	74	477280.2224	4488999.754	133	477412.3057	4488045.566
15	476142.4565	4489142.097	75	477301.8273	4488984.533	134	477397.8064	4488063.286
16	476143.952	4489142.898	76	477324.385	4488959.851	135	477393.5569	4488084.839
17	476190.4161	4489148.869	77	477369.6757	4488917.579	136	477377.77	4488118.668
18	476212.0754	4489141.21	78	477371.1763	4488914.492	137	477348.5708	4488153.902
19	476221.1009	4489121.288	79	477418.837	4488878.576	138	477319.4481	4488171.206
20	476220.6064	4489120.063	80	477466.6621	4488867.338	139	477286.6336	4488185.069
21	476187.0574	4489076.778	81	477504.4014	4488909.313	140	477253.3592	4488203.925
22	476150.1173	4489040.921	82	477546.0872	4488929.181	141	477220.6098	4488214.632
23	476148.07	4489035.473	83	477597.1399	4488937.683	142	477182.7176	4488224.896
24	476132.0134	4489001.097	84	477650.7574	4488921.773	143	477140.7071	4488232.869
25	476163.9045	4488973.21	85	477685.264	4488880.725	144	477066.024	4488250.269
26	476208.4757	4488948.792	86	477658.123	4488839.367	145	477017.6323	4488271.164
27	476206.5086	4488949.924	87	477640.1337	4488790.939	146	476985.848	4488299.191
28	476227.0498	4488921.351	88	477673.4611	4488751.458	147	476968.846	4488315.139
29	476229.0434	4488917.096	89	477658.0046	4488707.893	148	476945.5471	4488339.005
30	476250.6569	4488896.314	90	477682.957	4488654.225	149	476912.8944	4488379.432
31	476280.4951	4488893.199	91	477684.7178	4488648.096	150	476872.0115	4488394.999
32	476292.909	4488898.916	92	477685.4086	4488641.991	151	476834.5013	4488432.251
33	476302.328	4488915.493	93	477723.3509	4488593.854	152	476793.5547	4488445.017
34	476294.9389	4488940.376	94	477754.8111	4488632.103	153	476744.4156	4488452.252
35	476275.3091	4488964.998	95	477760.7684	4488717.806	154	476663.581	4488479.949
36	476283.3831	4488990.745	96	477795.7218	4488707.56	155	476584.1278	4488522.884
37	476287.4233	4489031.173	97	477787.6475	4488574.86	156	476550.8975	4488488.942
38	476299.9565	4489052.966	98	477823.0209	4488495.921	157	476422.0875	4488568.081
39	476325.5601	4489072.294	99	477837.2988	4488449.932	158	476352.1438	4488624.856
40	476348.3436	4489073.401	100	477815.2373	4488418.59	159	476289.3568	4488664.922
41	476558.6272	4489004.38	101	477814.9097	4488415.86	160	476241.7998	4488690.869

42	476592.4447	4489014.505	102	477810.2973	4488377.435	161	476189.627	4488723.038
43	476591.1243	4489015.244	103	477789.9852	4488347.982	162	476145.9864	4488757.529
44	476589.6453	4489018.931	104	477768.3403	4488308.486	163	476058.4509	4488813.529
45	476613.6695	4489049.6	105	477783.5988	4488266.282	164	476018.0168	4488865.823
46	476661.8481	4489070.433	106	477795.8082	4488227.961	165	475975.8668	4488901.502
47	476676.3766	4489097.09	107	477794.9707	4488221.076	166	475925.3227	4488933.222
48	476718.0246	4489096.983	108	477795.2874	4488218.029	167	475872.3826	4488994.648
49	476721.6462	4489096.973	109	477796.3811	4488175.409	168	475823.6321	4489058.035
50	476772.587	4489069.506	110	477789.5884	4488156.314	169	475792.93	4489093.277
51	476821.3025	4489084.907	111	477783.6965	4488128.678	170	475730.9594	4489135.493
52	476823.0967	4489086.208	112	477758.4476	4488095.12	171	475681.0017	4489155.685
53	476849.3024	4489128.865	113	477734.8265	4488072.138	172	475611.275	4489182.345
54	476849.3275	4489131.598	114	477732.8815	4488062.156	173	475571.1884	4489189.349
55	476842.1454	4489167.146	115	477732.9068	4488060.259	174	475545.9591	4489198.667
56	476878.729	4489206.834	116	477732.8149	4488047.552	175	475510.531	4489223.749
57	476900.685	4489195.773	117	477734.0837	4488045.341	176	475475.6768	4489251.72
58	476934.2949	4489170.464	118	477719.8045	4488026.662	177	475449.231	4489278.617
59	476939.6243	4489164.208	119	477712.1563	4488005.309	178	475496.6279	4489297.634
60	476990.6156	4489167.242						

ZONA ME PËRPARËSI ZHVILLIMIN E EKONOMISË MALORE
ZONA 17, NJËSIA ADMINISTRATIVE SELITË, BASHKIA MALLAKASTËR, QARKU FIER



Zona 17								
Njësia Administrative Selitë								
Nr.	Koordinata X	Koordinata Y	Nr.	Koordinata X	Koordinata Y	Nr.	Koordinata X	Koordinata Y
1	493224.1201	4489299.06	142	490236.986	4489269.117	283	489704.6728	4489496.963
2	493252.8694	4489317.944	143	490212.2216	4489216.127	284	489737.5056	4489486.036
3	493286.0674	4489298.362	144	490204.777	4489171.213	285	489747.1213	4489481.716
4	493342.9003	4489245.783	145	490247.7928	4489125.096	286	489749.8564	4489477.352
5	493349.1797	4489230.598	146	490250.3362	4489114.1	287	489766.1073	4489444.717
6	493355.0264	4489216.459	147	490321.788	4489017.507	288	489788.6015	4489421.681
7	493374.6	4489200.598	148	490371.977	4488960.554	289	489812.9848	4489418.781
8	493379.3649	4489193.549	149	490268.7036	4488898.574	290	489836.1292	4489431.748
9	493381.8415	4489187.403	150	490208.019	4488990.696	291	489866.6356	4489449.034
10	493386.5231	4489163.846	151	490206.8273	4489001.53	292	489887.723	4489456.684
11	493386.5264	4489154.996	152	490205.8313	4489014.871	293	489900.4024	4489458.946
12	493386.5577	4489069.637	153	490148.5565	4489097.358	294	489923.5218	4489439.8
13	493387.6899	4488968.633	154	490054.2689	4489137.648	295	489924.3318	4489439.952
14	493387.6325	4488861.092	155	489923.4534	4489088.681	296	489956.3563	4489445.949
15	493384.2401	4488798.541	156	489802.397	4489248.88	297	489968.1537	4489448.158
16	493380.4016	4488746.849	157	489750.4306	4489322.41	298	489970.3997	4489448.093
17	493384.3165	4488723.801	158	489754.3085	4489371.298	299	489970.9799	4489448.687
18	493380.4682	4488698.062	159	489809.2697	4489334.404	300	489977.6067	4489449.928
19	493367.7003	4488670.621	160	489806.2476	4489372.363	301	490000.9744	4489454.304
20	493359.6404	4488672.851	161	489766.9089	4489425.381	302	490040.1381	4489455.758
21	493307.802	4488718.045	162	489739.4623	4489459.806	303	490086.0514	4489498.416
22	493281.4956	4488756.933	163	489713.6153	4489451.464	304	490124.1604	4489478.101
23	493190.4455	4488729.398	164	489642.1979	4489451.554	305	490167.2543	4489471.43
24	493150.5273	4488631.287	165	489572.506	4489536.735	306	490199.2301	4489502.712
25	493088.5684	4488549.589	166	489515.3893	4489572.687	307	490236.5358	4489546.194
26	492997.8697	4488507.302	167	489471.13	4489557.389	308	490275.4607	4489572.797
27	492988.9887	4488423.508	168	489420.8941	4489560.923	309	490307.4817	4489573.579
28	492989.9976	4488420.394	169	489409.277	4489586.306	310	490354.5631	4489544.467
29	493042.2966	4488383.602	170	489365.4246	4489579.245	311	490383.2246	4489559.658
30	493099.2212	4488415.651	171	489303.6872	4489575.083	312	490421.9359	4489589.993
31	493137.059	4488415.62	172	489300.1846	4489615.428	313	490457.9244	4489575.422
32	493140.1917	4488412.524	173	489248.5828	4489666.022	314	490493.1811	4489589.582
33	493199.2794	4488382.718	174	489208.56	4489720.408	315	490522.3455	4489577.116
34	493233.0754	4488394.05	175	489147.5989	4489784.767	316	490557.7829	4489581.501
35	493273.4981	4488424.402	176	488998.5444	4489961.738	317	490636.2598	4489524.552
36	493302.3488	4488446.066	177	488887.1082	4490056.273	318	490674.0341	4489483.523
37	493361.1524	4488479.816	178	488794.6184	4489972.386	319	490704.7366	4489468.361
38	493370.3281	4488519.324	179	488697.422	4489934.105	320	490748.3742	4489483.442
39	493371.4667	4488515.635	180	488644.604	4489873.238	321	490783.9461	4489485.815
40	493371.911	4488476.468	181	488552.4592	4489928.67	322	490796.1147	4489469.051
41	493367.0143	4488441.475	182	488383.4118	4489907.781	323	490796.448	4489464.319

42	493355.9944	4488386.296	183	488380.4696	4489907.786	324	490804.5251	4489451.805
43	493343.8198	4488339.575	184	488268.5074	4489941.243	325	490824.0242	4489451.783
44	493357.8518	4488314.392	185	488178.0529	4489979.808	326	490847.944	4489440.949
45	493373.2008	4488304.561	186	488131.8622	4490014.428	327	490874.603	4489387.962
46	493389.254	4488299.396	187	487994.8424	4490059.793	328	490894.0147	4489343.392
47	493404.3846	4488295.527	188	487890.5957	4490116.978	329	490922.019	4489320.884
48	493421.6229	4488276.234	189	487903.8877	4490181.938	330	490938.6439	4489296.33
49	493446.898	4488247.946	190	487960.4515	4490283.872	331	490938.844	4489293.718
50	493443.7639	4488242.246	191	487990.7492	4490355.645	332	490945.3654	4489261.72
51	493197.2248	4487926.599	192	488012.0888	4490411.877	333	490946.6181	4489261.719
52	493146.045	4487903.003	193	488038.2188	4490478.631	334	490971.2563	4489266.098
53	493067.5692	4487847.825	194	488040.7984	4490489.639	335	490999.5739	4489257.273
54	493000.3277	4487797.738	195	488058.8275	4490543.568	336	491006.1934	4489235.679
55	492932.5543	4487748.901	196	488098.2229	4490639.336	337	491026.9988	4489218.778
56	492851.64	4487780.577	197	488152.3394	4490710.05	338	491024.3532	4489220.573
57	492636.7458	4487980.861	198	488208.2586	4490724.393	339	491032.1059	4489177.784
58	492623.6489	4488027.299	199	488249.6059	4490824.564	340	491075.4279	4489143.262
59	492661.2754	4488080.736	200	488294.7876	4490873.7	341	491097.1557	4489135.395
60	492647.0709	4488123.892	201	488399.7965	4490918.545	342	491139.0155	4489117.207
61	492661.9615	4488159.122	202	488483.688	4490876.854	343	491156.5434	4489054.141
62	492663.135	4488169.514	203	488498.5915	4490736.864	344	491161.3778	4489046.75
63	492657.9129	4488197.597	204	488561.9652	4490722.262	345	491203.0519	4488997.224
64	492595.7526	4488231.857	205	488661.9294	4490646.256	346	491241.3298	4488980.673
65	492631.3498	4488279.717	206	488708.3591	4490556.311	347	491282.2047	4488945.884
66	492690.9995	4488328.889	207	488756.2043	4490517.76	348	491282.9008	4488874.537
67	492680.6985	4488375.561	208	488771.7219	4490488.589	349	491338.8039	4488857.206
68	492742.9763	4488379.456	209	488751.4994	4490411.82	350	491353.0117	4488811.841
69	492712.4487	4488434.244	210	488790.6014	4490363.415	351	491418.432	4488769.29
70	492710.523	4488439.676	211	488808.9508	4490308.123	352	491412.8083	4488857.085
71	492698.8489	4488472.609	212	488812.0142	4490276.169	353	491395.2528	4488887.181
72	492602.2218	4488482.397	213	488789.0417	4490237.094	354	491375.4524	4488911.714
73	492595.3616	4488489.371	214	488758.7165	4490181.044	355	491357.7772	4488951.81
74	492501.2296	4488482.474	215	488766.1692	4490178.201	356	491377.0466	4488967.101
75	492413.3848	4488446.72	216	488785.2399	4490201.656	357	491371.1302	4489016.63
76	492336.4441	4488422.379	217	488810.2501	4490207.085	358	491396.8225	4489054.145
77	492268.9257	4488425.13	218	488822.1906	4490235.015	359	491448.6838	4489096.741
78	492209.6866	4488471.609	219	488835.9858	4490234.996	360	491494.6933	4489157.819
79	492148.6484	4488510.428	220	488846.4999	4490256.361	361	491521.9325	4489206.329
80	492090.6602	4488516.88	221	488853.6825	4490267.57	362	491571.8452	4489237.941
81	492026.4144	4488526.129	222	488877.1445	4490254.561	363	491624.0972	4489274.833
82	492041.3864	4488598.256	223	488893.0658	4490259.232	364	491663.8907	4489346.331
83	492056.6741	4488665.449	224	488892.3875	4490284.356	365	491694.3431	4489377.437
84	492006.2061	4488766.609	225	488907.9787	4490299.069	366	491739.0626	4489402.384
85	491877.1826	4488750.146	226	488927.7037	4490297.803	367	491777.7767	4489420.856

86	491873.3755	4488753.452	227	488950.0582	4490296.535	368	491818.3072	4489430.721
87	491777.0959	4488771.27	228	488966.9027	4490287.91	369	491847.9141	4489450.728
88	491729.1971	4488800.555	229	488979.6973	4490273.366	370	491847.538	4489456.8
89	491690.5628	4488840.818	230	488994.2331	4490269.757	371	491846.1469	4489493.838
90	491690.5226	4488848.985	231	489005.9109	4490251.463	372	491867.2631	4489504.297
91	491669.2197	4488917.082	232	489020.3905	4490225.115	373	491909.2487	4489496.919
92	491668.0864	4488924.416	233	489037.4436	4490200.756	374	491952.6745	4489495.837
93	491627.0435	4488971.66	234	489055.0152	4490184.061	375	491972.9941	4489531.846
94	491585.6876	4488995.809	235	489068.4708	4490154.366	376	491996.6531	4489572.172
95	491535.9514	4488981.851	236	489076.8309	4490132.27	377	492034.7155	4489564.415
96	491531.676	4488981.855	237	489086.4177	4490120.015	378	492071.1972	4489538.226
97	491479.9468	4488988.251	238	489106.4853	4490110.826	379	492110.7397	4489539.273
98	491508.7018	4488936.852	239	489100.6283	4490112.753	380	492156.6614	4489572.044
99	491537.5723	4488888.191	240	489118.5514	4490092.14	381	492200.9227	4489566.485
100	491567.3366	4488824.719	241	489139.8301	4490060.808	382	492226.6985	4489610.161
101	491594.4439	4488750.41	242	489158.3706	4490039.949	383	492243.4607	4489629.641
102	491647.1646	4488700.586	243	489165.2021	4490011.185	384	492287.3048	4489621.548
103	491685.8911	4488624.719	244	489156.0076	4489993.972	385	492330.7608	4489612.36
104	491720.9399	4488561.201	245	489153.1538	4489992.802	386	492362.6672	4489655.196
105	491752.5525	4488548.6	246	489130.9715	4489980.615	387	492367.32	4489676.531
106	491757.1108	4488542.83	247	489109.6282	4489961.27	388	492404.0953	4489683.69
107	491798.3774	4488495.61	248	489100.7925	4489949.56	389	492444.7599	4489689.677
108	491829.9202	4488484.48	249	489121.5423	4489950.085	390	492482.9743	4489657.463
109	491806.4635	4488465.287	250	489123.1803	4489950.083	391	492515.3575	4489614.505
110	491750.1176	4488450.874	251	489139.2693	4489958.981	392	492517.1791	4489565.801
111	491683.9031	4488511.595	252	489151.6961	4489953.376	393	492500.7994	4489485.584
112	491674.2782	4488550.605	253	489158.3032	4489941.218	394	492501.1232	4489482.52
113	491669.5327	4488557.373	254	489177.8916	4489930.345	395	492532.7378	4489455.983
114	491618.3856	4488580.852	255	489193.6245	4489932.021	396	492534.3688	4489455.982
115	491567.4156	4488603.706	256	489214.4544	4489907.704	397	492576.2192	4489447.679
116	491532.4806	4488650.414	257	489231.4069	4489880.803	398	492601.0511	4489448.836
117	491476.013	4488723.275	258	489239.9711	4489853.131	399	492634.2259	4489444.113
118	491350.6875	4488776.135	259	489252.1856	4489828.557	400	492636.386	4489444.111
119	491303.7944	4488758.403	260	489261.4255	4489799.515	401	492679.4754	4489470.229
120	491249.3292	4488741.971	261	489262.263	4489774.267	402	492709.6692	4489473.228
121	491198.5264	4488730.069	262	489257.5057	4489749.755	403	492751.7621	4489438.767
122	491187.4442	4488730.081	263	489280.1203	4489761.544	404	492753.2651	4489381.936
123	491113.6597	4488689.11	264	489298.4398	4489751.773	405	492796.1725	4489359.5
124	491059.5182	4488648.205	265	489322.3077	4489734.614	406	492834.1205	4489354.781
125	491030.0464	4488602.376	266	489334.312	4489710.54	407	492860.4613	4489306.801
126	490991.477	4488523.443	267	489345.2724	4489694.223	408	492861.6839	4489304.574
127	491006.1312	4488466.713	268	489346.8864	4489691.643	409	492886.1679	4489251.22
128	490893.6577	4488395.383	269	489363.2315	4489679.486	410	492924.4534	4489268.163
129	490796.9685	4488439.7	270	489381.3974	4489664.39	411	492961.7821	4489264.573

130	490723.9125	4488491.297	271	489400.5849	4489651.407	412	492984.2559	4489243.464
131	490613.0971	4488618.299	272	489411.1342	4489678.154	413	493013.4207	4489251.12
132	490549.9288	4488722.801	273	489430.3161	4489689.602	414	493039.975	4489257.43
133	490450.6914	4488865.417	274	489461.4081	4489685.717	415	493074.0686	4489248.973
134	490467.9803	4488900.533	275	489448.2803	4489629.614	416	493087.3969	4489253.871
135	490542.2899	4488942.977	276	489451.1603	4489597.546	417	493125.579	4489271.738
136	490647.7943	4489018.285	277	489479.208	4489583.896	418	493146.5566	4489288.92
137	490604.8035	4489123.482	278	489497.4833	4489595.394	419	493169.607	4489307.706
138	490541.8544	4489283.703	279	489536.6661	4489597.925	420	493200.9156	4489309.421
139	490477.5534	4489315.405	280	489556.6927	4489581.255	421	493220.5866	4489298.492
140	490390.7963	4489303.039	281	489622.1216	4489550.656	422	493224.1201	4489299.06
141	490323.056	4489294.861	282	489638.8158	4489494.674			

ZONA ME PËRPARËSI ZHVILLIMIN E EKONOMISË MALORE
ZONA 18, NJËSIA ADMINISTRATIVE ARANITAS, BASHKIA MALLAKASTËR, QARKU FIER



Njësia Administrative	Zona	Sipërfaqe (ha)
Hekal	Zona 1	79
Kutë dhe Fratar	Zona 2	174
Kutë	Zona 3	367
Qendër Dukas, Aranitas dhe Ngraçan	Zona 4	714
Fratar	Zona 5	234
Kutë	Zona 6	166
Kutë	Zona 7	71
Aranitas	Zona 8	3
Sellitë	Zona 9	45
Aranitas	Zona 10	72
Aranitas	Zona 11	71
Qendër Dukas	Zona 12	32
Qendër Dukas	Zona 13	453
Kutë	Zona 14	5
Kutë	Zona 15	7
Hekal	Zona 16	125
Sellitë	Zona 17	357
Aranitas	Zona 18	48
Qendër Dukas	Zona 19	18
Qendër Dukas	Zona 20	1

Map data © OpenStreetMap contributors, Microsoft, Facebook, Google, Esri Community Maps contributors, Map layer by Esri

*Zona 18 ndodhet në territorin e Njësia Administrative Aranitas, me sipërfaqe prej 48 ha

**Sistemi Koordinativ: KRIGJSH (Komiza Referuese Gjeodetike Shqiptare) EPSG: 6870

Zona 18								
Njësia Administrative Aranitas								
Nr.	Koordinata X	Koordinata Y	Nr.	Koordinata X	Koordinata Y	Nr.	Koordinata X	Koordinata Y
1	483005.7105	4495444.143	17	482369.0778	4494826.532	33	482625.3663	4495333.095
2	483080.4198	4495384.005	18	482330.0792	4494841.047	34	482659.2284	4495347.317
3	483091.4091	4495258.781	19	482297.3204	4494839.355	35	482682.3575	4495336.852
4	483096.2634	4495179.259	20	482315.5472	4494872.794	36	482719.7867	4495310.89
5	483126.3289	4495082.733	21	482333.0471	4494884.575	37	482778.0851	4495337.691
6	483122.6856	4494983.671	22	482358.6597	4494941.849	38	482809.227	4495341.869
7	483013.4007	4494732.738	23	482376.257	4494962.019	39	482844.9352	4495331.228
8	482755.9714	4494580.336	24	482414.9966	4494990.689	40	482878.617	4495360.074
9	482616.3204	4494559.33	25	482471.885	4495037.073	41	482871.7006	4495390.785
10	482554.9114	4494583.974	26	482500.3061	4495071.801	42	482855.3547	4495438.137
11	482526.1506	4494604.675	27	482509.8435	4495099.575	43	482806.9485	4495489.237
12	482503.9909	4494644.602	28	482521.341	4495165.519	44	482839.7022	4495536.021
13	482433.995	4494681.242	29	482538.4372	4495203.941	45	482869.3628	4495561.418
14	482409.2631	4494779.108	30	482560.5781	4495243.451	46	482935.043	4495576.013
15	482409.2057	4494796.597	31	482594.6898	4495258.771	47	483005.7105	4495444.143
16	482393.9652	4494812.457	32	482599.3493	4495305.908			

ZONA ME PËRPARËSI ZHVILLIMIN E EKONOMISË MALORE
ZONA 19, NJËSIA ADMINISTRATIVE QENDËR DUKAS, BASHKIA MALLAKASTËR, QARKU FIER



Njësia Administrative	Zona	Sipërfaqe (ha)
Hekal	Zona 1	79
Kutë dhe Fratar	Zona 2	174
Kutë	Zona 3	367
Qendër Dukas, Aranitas dhe Mgraçan	Zona 4	714
Fratar	Zona 5	234
Kutë	Zona 6	166
Kutë	Zona 7	71
Aranitas	Zona 8	3
Sellë	Zona 9	45
Aranitas	Zona 10	72
Aranitas	Zona 11	71
Qendër Dukas	Zona 12	32
Qendër Dukas	Zona 13	453
Kutë	Zona 14	5
Kutë	Zona 15	7
Hekal	Zona 16	125
Sellë	Zona 17	357
Aranitas	Zona 18	48
Qendër Dukas	Zona 19	18
Qendër Dukas	Zona 20	1

1:5,000

0 0.1 0.2 0.2 0.3 Km

Legjendë

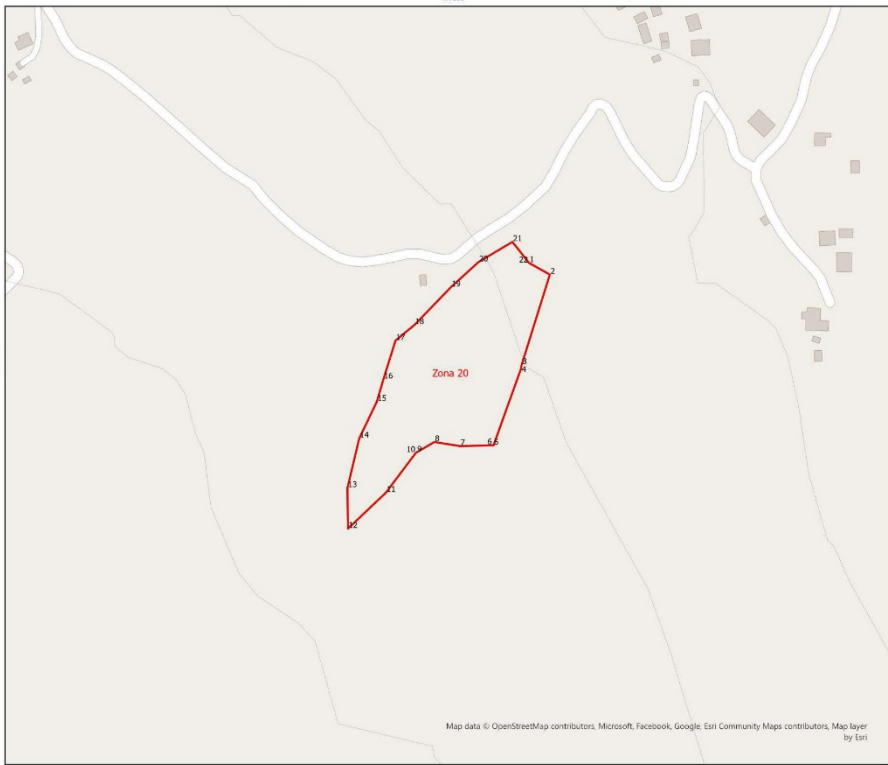
- Zona me përparësi zhvillimin e ekonomisë malore
- Bashkia Mallakastër
- Ndërtesa
- Izolipse
- Kategoritë e Rrjetit Rrugor
 - Kategoria C: Rruge Interurbane Dytësore
 - Kategoria F: Rruge Lokale

*Zona 18 ndodhet në territorin e Njësia Administrative Qendër Dukas, me sipërfaqe prej 18 ha

**Sistemi Koordinativ: KRGSJSH (Komiza Referuese Gjeodezike Shqiptare) EPSG: 8870

Zona 19		
Njësia Administrative Qendër Dukas		
Nr.	Koordinata X	Koordinata Y
1	479179.0315	4494264.042
2	479197.4953	4494298.617
3	479224.3942	4494310.541
4	479249.9633	4494300.641
5	479340.0052	4494399.059
6	479363.9576	4494464.025
7	479411.5264	4494476.606
8	479469.6965	4494432.725
9	479516.0792	4494374.947
10	479511.5194	4494356.002
11	479550.6737	4494304.121
12	479583.6481	4494208.533
13	479615.5956	4494175.933
14	479606.3732	4494116.154
15	479565.6903	4494077.788
16	479494.6032	4494047.995
17	479442.2435	4494010.621
18	479407.4551	4493968.882
19	479376.8833	4493957.412
20	479325.9835	4493933.64
21	479264.5825	4493916.729
22	479215.2205	4493901.775
23	479163.9681	4493911.352
24	479127.1836	4493887.021
25	479099.2209	4493898.355
26	479123.5294	4494059.048
27	479152.3052	4494170.006
28	479179.0315	4494264.042

ZONA ME PËRPARËSI ZHVILLIMIN E EKONOMISË MALORË
ZONA 20, NJËSIA ADMINISTRATIVE QENDËR DUKAS, BASHKIA MALLAKASTËR, QARKU FIER



Njësia Administrative	Zona	Sipërfaqe (ha)
Hekal	Zona 1	79
Kutë dhe Fratar	Zona 2	174
Kutë	Zona 3	367
Qendër Dukas, Aranitas dhe Ngragan	Zona 4	714
Fratar	Zona 5	234
Kutë	Zona 6	166
Kutë	Zona 7	71
Aranitas	Zona 8	3
Selë	Zona 9	45
Aranitas	Zona 10	72
Aranitas	Zona 11	71
Qendër Dukas	Zona 12	32
Qendër Dukas	Zona 13	453
Kutë	Zona 14	5
Kutë	Zona 15	7
Hekal	Zona 16	125
Selë	Zona 17	357
Aranitas	Zona 18	48
Qendër Dukas	Zona 19	18
Qendër Dukas	Zona 20	1

1:2,000

0 0 0 0.1 0.1 0.1 Km

Legjendë

- Zona me përparësi zhvillimin e ekonomisë malorë
- Bashkia Mallakastër
- Ndërfillesa
- Izopipe
- Kategoritë e Rrjetit Rrugor
- Kategoria F. Rruge Lokale

*Zona 20 ndodhet në territorin e Njësia Administrative Qendër Dukas, me sipërfaqe prej 1 ha

**Sistemi Koordinativ: KRGSJSH (Komiza Referuese Gjeodezike Shqiptare) EPSG:6876

Zona 20		
Njësia Administrative Qendër Dukas		
Nr.	Koordinata X	Koordinata Y
1	477653.2032	4498470.001
2	477667.81	4498461.77
3	477648.1712	4498398.998
4	477647.5373	4498395.748
5	477628.4882	4498342.682
6	477626.5313	4498342.688
7	477605.0198	4498342.245
8	477587.263	4498345.077
9	477574.8082	4498337.83
10	477574.3418	4498337.583
11	477553.4712	4498309.83
12	477526.9377	4498284.674
13	477526.5802	4498313.065
14	477534.7977	4498347.589
15	477547.1111	4498373.276
16	477551.705	4498388.914
17	477560.1065	4498415.804
18	477573.3604	4498426.698
19	477598.8374	4498453.08
20	477618.0465	4498470.537
21	477641.7117	4498484.608
22	477653.2032	4498470.001